



52L07NE0023 16 REX LAKE

010

Diamond Drilling

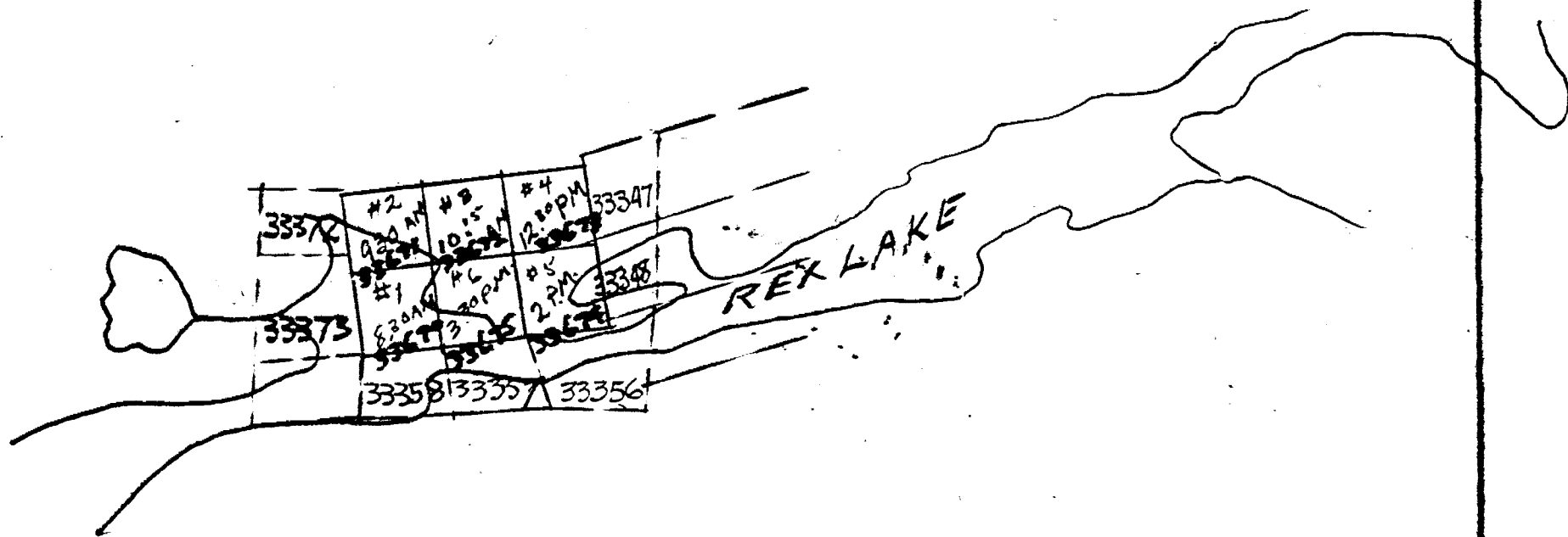
Area of REX LAKE:

Report No 16

Work performed by: Quebec Nickel Corporation Limited

Claim No	Hole No	Footage	Date	Note
KRI. 33675	R-13	561.0'	July/53	
	R-14	555.0'	July/53	
	R-15	400.0'	July/53	
		<u>1516'</u>		

Notes:

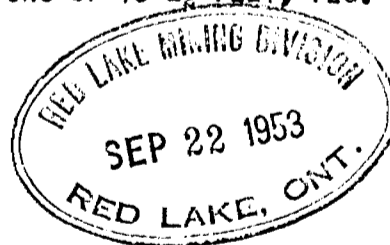


FIELD SKETCH OF 6 MINING CLAIMS
 ON NORTH SIDE OF REX LAKE, RED LAKE
 MINING DIVISION KENORA DISTRICT.

BY H. A. BERGMAN KENORA
 JULY 24 1952. LIC # H 6609.

HOLE NUMBER REX LAKE - R 13 DATE STARTED JULY 11, 1953
 TOTAL DEPTH 561' DATE FINISHED JULY 22, 1953
 BEARING NORTHERLY DIP 45° ELEVATION + 20' ABOVE LAKE
 CO-ORDINATES LAT DEPT. SEE PLAN

DEPTH		FORMATION
FROM	TO	
0	25	CASING
25	30	PEGMATITE PINK.
30	32	PARAGNEISS, ALTERED AND GRANITIZED.
32	60	PARAGNEISS, MASSIVE, OCCASIONAL FAINT BANDING AT 45° TO CORE AXIS, OCCASIONAL SPECKS OF MINERALIZATION, OCCASIONAL PEG STRINGER. (PYRITE)
60	65	PARAGNEISS, OCCASIONAL GARNETS, MORE SILICEOUS THAN USUAL, BANDED BANDS OF BIOTITE.
65	141	PARAGNEISS MASSIVE, SPOTTED EFFECT GIVEN TO CORE BY CLUSTERS OF BIOTITE, OCCASIONAL SPECKS OF MINERAL.
141	151	GRANITE HIGHLY SHEARED, BIOTITE WELL DEVELOPED.
151	160.5	GRANITE - ALTERED, APPEARS TO BE DIGESTED, PARAGNEISS.
160.5	173	PARAGNEISS COMPLEX WITH SCATTERED GARNETS.
173	194	PEGMATITE AND PINK GRANITE APPEAR TO BE INTRUSIVE IN CHARACTER, AS LAST 2 FEET IS BRECCIATED PARAGNEISS MATRIX.
194	197	PARAGNEISS, GRANITIZED FIRST 3 FEET, UP TO 15% GARNETS. FOLLOWING CHALCO IN FINE FRACTURES.
197	199	PEG AND PARAGNEISS GRANITIZED.
199	251	PARAGNEISS RATHER MASSIVE CHARACTER. GARNETS UP TO 10%. SOME SHORT SECTIONS GRANITE UP TO 6" WIDE. <u>JULY 16/53</u>
251	255	PEGMATITE VERY SILICEOUS, GARNETS.
255	262	PARAGNEISS, GRANITIZED.
262	265	PEG.
265	280	PARAGNEISS GARNETIZED.
280	299	PEG. COMPLEX WITH GARNETIZED PARAGNEISS UP TO 2".
299	351	PARAGNEISS COMPLEX MASSIVE BANDING AT 45° TO CORE AXIS. PEGS. UP TO 1" IN WIDTH. GARNETS BETWEEN 10 - 15% NO MINERAL NOTED.
351	353	GRANITE WITH GARNETS.
353	362	PARAGNEISS WITH BOTH LARGE AND SMALL COARSE AND LARGE GARNETS.
362	383	PEGMATITE COMPLEX WITH PARAGNEISS AND GARNETS UP TO 1".
383	420	PARAGNEISS COMPLEX, WITH PEG. SECTIONS UP TO 2 1/2 FEET, PEG. AND GRANITES HAVE GARNETS. <u>JULY 19/53 - 412 FEET</u>
420	428	PINK GRANITE AND GARNETS.
428	434	PARAGNEISS 10% GARNETS
434	445	PINK GRANITE, FEW GARNETS.
445	455	PARAGNEISS, FEW GARNETS.
455	464	PINK GRANITE.
464	483	PARAGNEISS, 4% GARNETS
483	498	GRANITE AND PEG. WITH 3 FT. PARAGNEISS AT 482 FEET.
498	561	PARAGNEISS MASSIVE, WITH ODD GRANITIC SECTIONS.



END OF HOLE

NO SAMPLES.
 LOGGED BY GILROY
 CHECKED BY H.G. WAY.

HOLE NUMBER REX LAKE R 14 DATE STARTED JULY 22, 1953
TOTAL DEPTH 555' DATE FINISHED JULY 29, 1953
BEARING NORTHERLY DIP -45° ELEVATION
CO-ORDINATES: LAT DEPT. SEE PLAN

DEPTH		FORMATION
FROM	TO	
0	72	CASING
72	101	PARAGNEISS WITH SMALTERING GARNETS CLUSTERS OF BIOTITE GIVE SPOTTY APPEARANCE.
101	105	PINK GRANITE
105	123	PARAGNEISS MASSIVE.
123	125	PEGMATITE, LAST FOOT BADLY BROKEN.
125	148	PARAGNEISS, MASSIVE WITH 6" PEG. AT 136 FEET. (140 FEET - CAVING REQUIRED CONCRETING.)
148	155	PARAGNEISS WITH SLIGHT SHEARING.
155	179	PARAGNEISS, MASSIVE, SLIGHT SHEAR IN SHORT SECTIONS.
179	180.5	PEGMATITE AND GRANITE.
180.5	182.5	PARAGNEISS MASSIVE.
182.5	185	PEGMATITE AND GRANITE.
185	188	PARAGNEISS.
188	190	PEGMATITE AND GRANITE.
190	194	PARAGNEISS.
194	197	PEG. AND GRANITE.
197	269	PARAGNEISS, MASSIVE WITH SPOTTED APPEARANCE DUE TO BIOTITE, SLIGHT SHEAR IN PLACES.
269	273	PEG. AND GRANITE.
273	310	PARAGNEISS MASSIVE, ODD GRANITE.
310	313	PEGMATITE AND GRANITE.
313	323	PARAGNEISS, GRANITIZED.
323	327	PEG.
327	341	PARAGNEISS GRANITIZED IN PLACES.
341	344	PEG. AND GRANITE.
344	348	PARAGNEISS SCATTERED GARNETS.
348	348.3	PEGMATITE.
348.3	352	PARAGNEISS MINERALIZED IN X FRACTURES PARALLELL TO CORE.
352	375	PARAGNEISS, FEW GARNETS 9" PEGMATITE AT 362, 1.5 FOOT AT 366 FT.
375	379	PARAGNEISS, SLIGHT GRANITIZATION.
379	386	PEG. AND GRANITE.
386	415	PARAGNEISS, MASSIVE WITH OCCASIONAL 6" SECTIONS OF PEG.
415	417	PEGMATITE AND GRANITE.
417	477	PARAGNEISS, MASSIVE WITH SPOTTED APPEARANCE OF TWO SHORT SECTIONS OF PEG.
477	480	PEG. AND GRANITE.
480	492	PARAGNEISS, MASSIVE.
492	497	PARAGNEISS, CONTORTED STRINGERS OF QTZ. AND FELDSPAR.
497	555	PARAGNEISS COMPLEX SOME GRANITIZATION SLIGHT SHEARING. (509 - 511 PEGMATITE AND GRANITE.)

END OF HOLE

LOGGED BY R. GILROY
NO SAMPLES
CHECKED BY H.G. WAY.

G E O L O G I C A L R E C O R D

HOLE NUMBER	Rex Lake R-15	DATE STARTED	July 30, 1953
TOTAL DEPTH	400' plus	DATE FINISHED	August 7, 1953
BEARING	Northerly	DIP	-45°
		ELEVATION	20' above Rex Lake
CO-ORDINATES:	LAT	DEPT.	Same setup as approx. 400' N of R-14

DEPTH		FORMATION
From	To	
0'	48'	Casing in low ground
48'	200'	Paragneiss complex with varying degree of garnetization and with usual assemblage of narrow pegmatite phases. No mineral worth noting.
200'	400'	Same with increased degree of silicification and granitization.
400'	?	Exact end of hole not logged - no mineral worth noting.

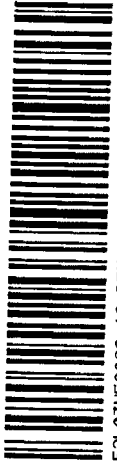
Logged by R. Gilroy

No Samples

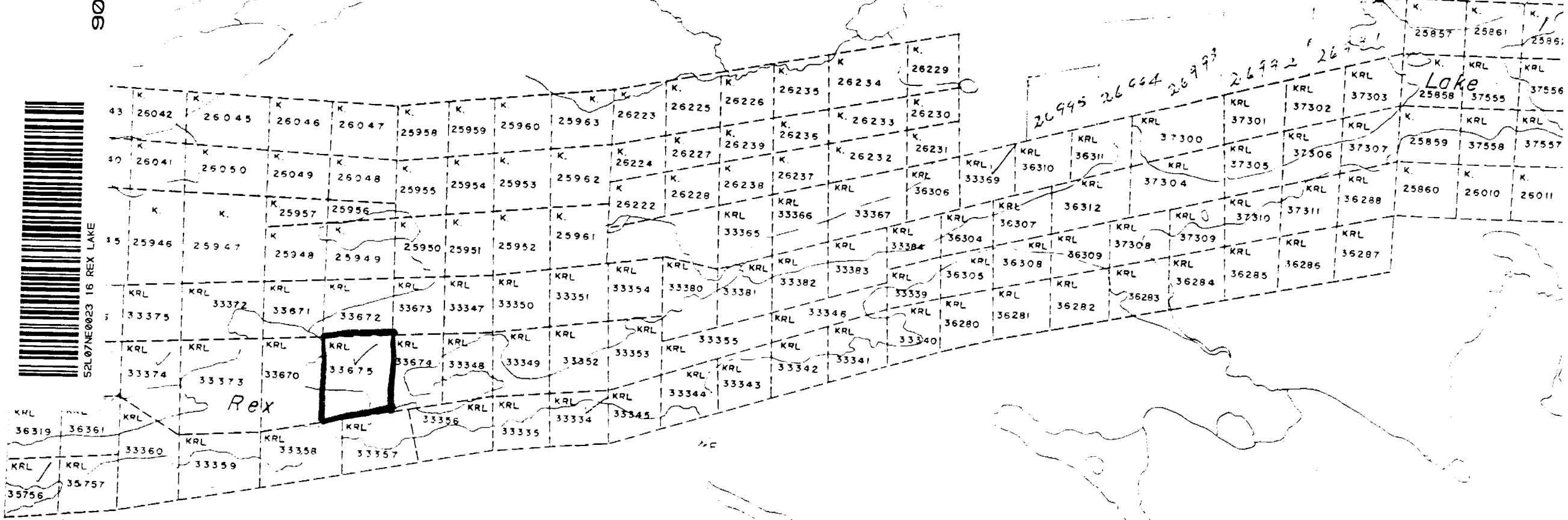
Contract Drilling - J. Zagazowski, Red Lake, Ontario.

Checked by H. G. Way

900



52L07NE0023 16 REX LAKE



26995 26664 26993 26992 26991

Lake

Rex

W530/33348

33675

Red Lake

THE MINING ACT



REPORT OF WORK

ONTARIO

To the Recorder of RED LAKE Mining Division:

I, Quebec Nickel Corporation Limited,
(Name of Applicant)

Box 492, Sherbrooke, Quebec.
(Post Office Address)

the recorded holder of mining claim No. KRL 33675 hereby report the performance of 225 days' work not before reported.

* This mining claim is one of a group of contiguous claims numbered KRL 33672-73, 33670-71-72-73-74-75, 33318, of which I am the recorded holder under Mining Licence No. A 24748, and the work was performed on mining claim(s) KRL 33675 and is to be applied in respect of mining claim(s) KRL 33675

(*Complete above section only if applicable)

The work is as follows:

Stripping or opening up mines, sinking shafts or other actual mining operations

The names and addresses of the men who performed the work and the dates upon which each man worked in its performance are: (If more space is required, attach list).

.....
.....
.....
.....

Total No. of days.....

Diamond or other Core Drilling

Footage drilled 1516' No. of holes drilled 3 Angle 40°

Diameter of core 1 1/4" Names and address of owner and operator of drill J. Zagowski, Red Lake, Ontario.

Dates upon which drilling was done July - August, 1953
(Core log accompanies this report).

Total No. of days..... 1516

Work by Compressed Air or other Power Driven Rock Drill

Type of drill.....

Names and addresses of men engaged in operating drill.
.....
.....

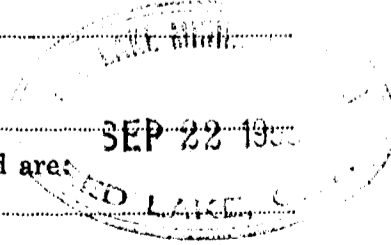
Dates upon which each man worked.....

Total No. of days.....

Geophysical Survey

Type of instrument used.....

Names and addresses of men employed and the dates on which each worked are:
.....
.....



Total No. of days.....

RECORDED Sept. 22/53.
REC. No.