



52L07SE0012 14 PATTERSON

010

Diamond Drilling

Area of PATERSON LAKE

Report N^o 14

Work performed by: Consolidated Summit Mines Limited (J. Koski)

Claim N ^o	Hole N ^o	Footage	Date	Note
K 415856	76-7	200.0'	Nov/76	(1)
K 415857	76-8	226.0'	Nov/76	(1)
	76-9	244.0'	Nov/76	(1)
K 415856	76-7	EXTENDED TO 300.0'	May/77	(2)
	77-10	305.0'	May/77	(2)
K 415857	77-11	163.0'	May/77	(2)
	77-12	145.0	May/77	(2)
K 415856	77-13	227.0	May/77	(2)
	77-14	134.0	May/77	(2)

9

1700'

Notes:

(1) # 5-77

(2) #54-78

Patterson Lk.
PATERSON #5-77

Consolidated Summit
#5-77

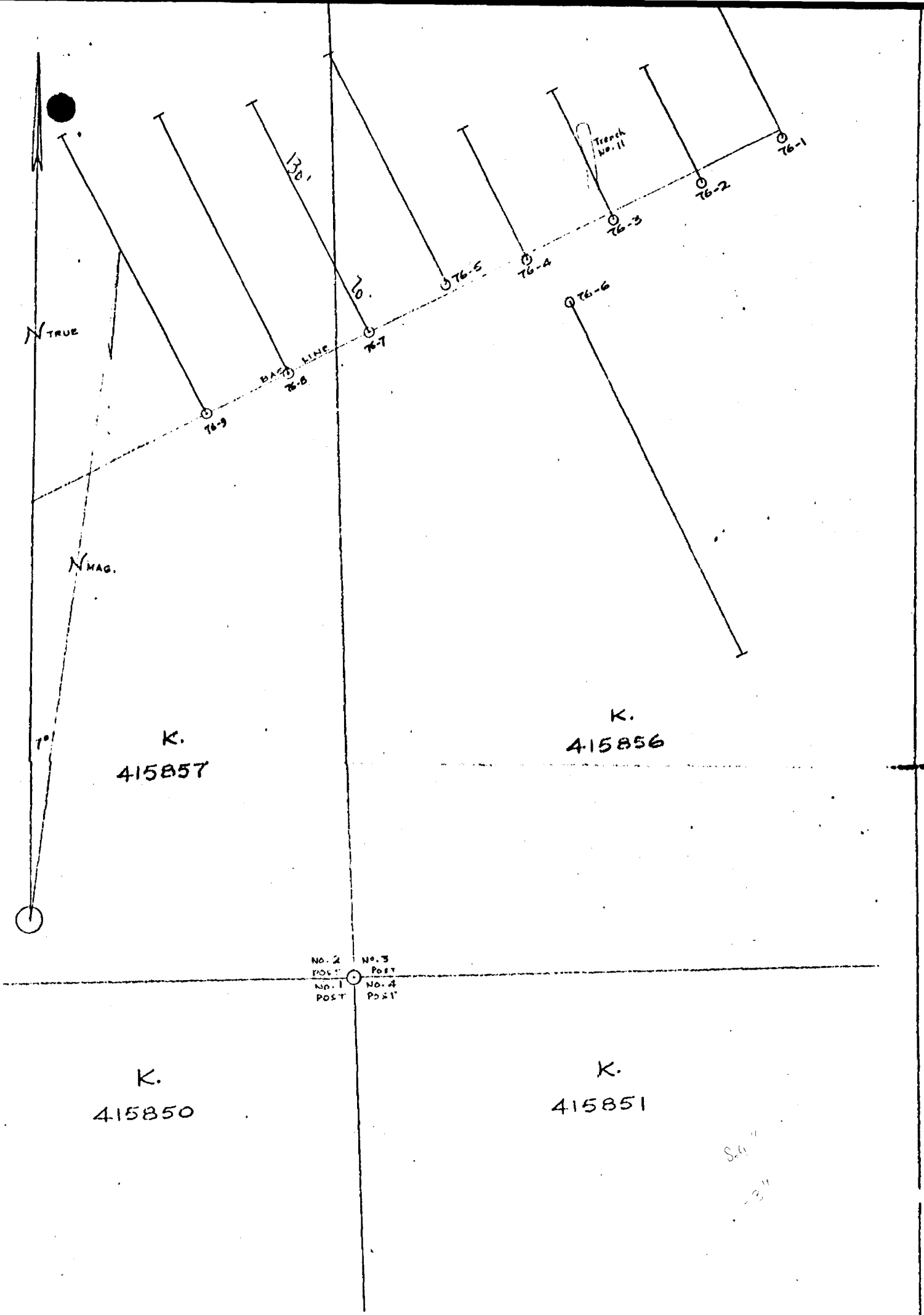
Paterson Lake

			434127	434845	434844	
				K		445930
434853	434848	434847	434846	K		
434847	434850	434851	434852	445928	K	445931
				K		
				445929	K	445932

K	K	K	K	K	
415859	415860	415861	415862	415863	
K	K	K	K	K	
415858	415857	415856	415855	415854	
K	K	K	K	K	
415848	415849	415850	415851	415852	415853

PATERSON LK
M-2531

41' 40' 39' 38' 37'



LOCATION OF DRILL HOLES 76-1 to 76-9
 CONSOLIDATED SUMMIT MINES LIMITED
 TOURIST LAKE KENORA AREA ONTARIO

SCALE: 1 IN. = 60 FT.
 65' 1/2

Ross Kidd
 Ross Kidd

CONSOLIDATED SUMMIT MINES LTD.

PROPERTY TOURIST LAKE KENORA AREA ONTARIO PAGE 1 (OF 1)

LOCATION CLAIM: K. 415856. SEE DRILL PLAN. BEARING 333°T HOLE NO. 76-7

LOGGED BY ROSS KIDD ELEVATION _____ DIP -45° FINAL DEPTH 200.0 FEET

STARTED NOVEMBER 3, 1976 TESTS (CORRECTED) _____

FINISHED NOVEMBER 4, 1976

CASING LEFT IN HOLE. NONE

CORE SIZE AXT (1 1/4")

FROM	TO	DESCRIPTION
0.0	9.0	<u>CASING</u>
9.0	48.7	<u>MONZONITE</u> COARSE, GREY, MOTTLED WITH FINE BIOTITE. GAMMA COUNT ABOUT 100 COUNTS PER SECOND ON AVERAGE, ON A SRAT SCINTILLOMETER.
48.7	55.0	<u>BIOTITE SCHIST</u> MINOR PATCHY PYRRHOTITE.
55.0	70.5	<u>MONZONITE</u> GAMMA COUNT ABOUT 130 CPS.
70.5	74.0	<u>BIOTITE SCHIST</u> GAMMA COUNT ABOUT 90 CPS.
74.0	200.0	<u>MONZONITE</u> GAMMA COUNT INCREASES TO 200 CPS FROM 100' TO 175'. 152'-154'; UP TO 250 CPS.
	200.0	<u>END OF HOLE</u>

Ross Kidd

HOLE NO. 76-7

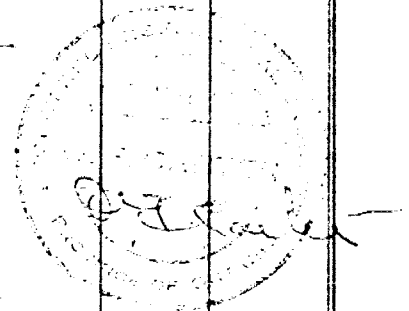
DIAMOND DRILL RECORD

NAME OF PROPERTY CONS. SUMMIT MINES LTD.
 HOLE NO. 76-7 LENGTH DEEPENED 200-300
 LOCATION 360' N, 20' E P.#3 CL. K415856 (SEE PLAN)
 LATITUDE _____ DEPARTURE _____
 ELEVATION _____ AZIMUTH N 34° W DIP -45°
 STARTED MAY 20, 1977 FINISHED MAY 23, 1977

FOOTAGE	DIP	AZIMUTH	FOOTAGE	DIP	AZIMUTH

HOLE NO. 76-7 SHEET NO. 1 of 1
 REMARKS DEEPENING
 LOGGED BY O.F. CARTER

FOOTAGE		DESCRIPTION	SAMPLE			ASSAYS					
FROM	TO		NO.	SULPHIDES	FOOTAGE			%	%	OZ/TON	OZ/TON
					FROM	TO	TOTAL				
200	253	MONZONITE, VERY CS, LIGHT									
253	254	BIOTITE SCHIST, fine, dark, uniform 45° CONTACTS									
254	300	DIORITE, grey white to dark, med. coarse. uniform AT 255' - 1" WITH coarse dark spots. 500-1000 c/s CORE RACKED & STORED AT DRILL SITE.									



EM. 6-1168

LANGRIDGE LIMITED,

PROPERTY CONSOLIDATED SUMMIT MINES LTD. PAGE 1 (OF 1)
TOURIST LAKE KENORA AREA ONTARIO

LOCATION CLAIM K. 415857. SEE DRILL PLAN. BEARING 333° T HOLE NO. 76-8

LOGGED BY ROSS KIDD ELEVATION _____ DIP -45° FINAL DEPTH 226.0 FEET

STARTED NOV. 6TH, 1976 TESTS (CORRECTED) _____

FINISHED NOV. 9TH, 1976 _____

CASING LEFT IN HOLE. NONE

CORE SIZE AXT (1 1/4")

FROM	TO	DESCRIPTION
0.0	13.0	<u>CASING</u>
13.0	81.0	<u>MONZONITE</u> GAMMA COUNT ABOUT 200 CPS TO 40', THEN INCREASING TO 300 CPS TO 65'. 71': 2" SPOT AT 500 CPS. 84': 3" SPOT AT 650 CPS.
81.0	82.5	<u>BIOTITE SCHIST</u> LOW GAMMA COUNT - ABOUT 100 CPS.
82.5	105.0	<u>MONZONITE</u> COARSE. WHITISH-GREY COLOUR. GAMMA COUNT ABOUT 200 CPS.
105.0	110.0	<u>BIOTITE SCHIST</u> GAMMA COUNT ABOUT 150 CPS.
110.0	221.0	<u>MONZONITE</u> COARSE. WHITISH-GREY. GAMMA COUNT ABOUT 200 CPS, THEN INCREASING TO 250 CPS FROM 175' ON. OCCASIONAL MINOR PATCHY PYRRHOTITE. 196': 3" SPOT AT 350 CPS. 210': 2" SPOT AT 300 CPS.
221.0	226.0	<u>QUARTZ DIORITE</u> FINER GRAINED. DARKER GREY. MORE QUARTZ AND LESS FELDSPAR. GAMMA COUNT ABOUT 150 CPS.
	226.0	<u>END OF HOLE</u>

Ross Kidd

HOLE NO. 76-8

PROPERTY CONSOLIDATED SUMMIT MINES LTD. PAGE 1 (OF 1)

LOCATION CLAIM K, 415857. SEE DRILL PLAN. BEARING 333°T HOLE NO. 76-9

LOGGED BY ROSS KIDD ELEVATION _____ DIP -45° FINAL DEPTH 244.0 FEET

STARTED NOV. 10, 1976 TESTS (CORRECTED) _____

FINISHED NOV. 12, 1976

CASING LEFT IN HOLE. NONE

CORE SIZE AXT (1 1/4")

FROM	TO	DESCRIPTION
0.0	17.0	<u>CASING</u>
17.0	100.0	<u>MONZONITE</u> COARSE, WHITISH-GREY, GAMMA COUNT AVERAGES ABOUT 180 COUNTS PER SECOND ON SRAT SCINTILLOMETER. 93' : 2" SPOT AT 320 CPS.
100.0	111.0	<u>BIOTITE SCHIST</u> PATCHY PYRRHOTITE WITH ODD SPECK OF CHALCOPYRITE. LOW GAMMA COUNT OF ABOUT 120 CPS.
111.0	133.0	<u>MONZONITE</u> GAMMA COUNT ABOUT 180 CPS.
133.0	138.0	<u>BIOTITE SCHIST</u>
138.0	228.0	<u>MONZONITE</u> GAMMA COUNT AVERAGES ABOUT 200 CPS. 172' : 2" SPOT AT 350 CPS.
228.0	244.0	<u>QUARTZ DIORITE</u> FINER GRAINED AND DARKER GREY THAN THE MONZONITE. GAMMA COUNT RUNS ABOUT 170 CPS ON AVERAGE.
	244.0	<u>END OF HOLE</u>

Ross Kidd

HOLE NO. 76-9

DIAMOND DRILL RECORD

NAME OF PROPERTY CONS. SUMMIT MINES LTD.
 HOLE NO. 77-10 LENGTH 305
 LOCATION 310'N, 185'W P#2, Cl. K415857 (See PLAN)
 LATITUDE 100' LINE WEST OF 76-9 AND 70' LINE NORTH (See PLAN)
 ELEVATION _____ AZIMUTH N 34° W DIP -45°
 STARTED MAY 8 / 77 FINISHED MAY 14 - 1977

FOOTAGE	DIP	AZIMUTH	FOOTAGE	DIP	AZIMUTH

HOLE NO. 77-10 SHEET NO. 1 of 1

REMARKS _____

LOGGED BY O.F. CARTER

FOOTAGE		DESCRIPTION	SAMPLE			ASSAYS			
FROM	TO		NO.	SULPHIDES	FOOTAGE FROM TO TOTAL			OZ/TON	OZ/TON
0	14	CASING							
14	15	GRANITIC, red. POSS. BOULDER.							
15	73	MONZONITE, LT, CS, MUCH BIOTITE (UP TO 10%)							
73	76	BIOTITE SCHIST, fine, dark, 60° CONTACTS.							
76	85	MONZONITE, AS ABOVE							
85	89	BIOTITE SCHIST, AS ABOVE							
89	94	MONZONITE, AS ABOVE							
94	99	BIOTITE SCHIST, AS ABOVE							
99	215	MONZONITE							
		110-111 BIOTITE SCHIST 60°							
		168-6" WITH CONSID. PYRRHOTITE, ONE SPOT UP TO 200 G/S							
		180-215 DARKER WITH INCREASED BIOTITE							
215	290	DIORITE, Grey white-dark, very uniform, med. gr.							
290	305	GRADES TO MONZONITE AS ABOVE							
		297-3" BIOTITE SCHIST + 18" very CS milky plagioclase							
	305	END							
		No R/A ABOVE 200 g/s as noted above SPRAT SPD-2 Sent							
		CORE RACKED AND STORED AT DRILL SITE							

EM. 6-1188

LANGRIDGE LIMITED,

[Handwritten signature]

DIAMOND DRILL RECORD

NAME OF PROPERTY CONS. SUMMIT MINES LTD.
 HOLE NO. 77-11 LENGTH 163'
 LOCATION 300'N, 10'W Post #2 U. K 415857 (SEE PLAN)
 LATITUDE ON LINE OF HOLE No. 8 DEPARTURE 40'S of collar (SEE MAP)
 ELEVATION _____ AZIMUTH N 34°W DIP -55°
 STARTED MAY 15, 1977 FINISHED MAY 19, 1977

FOOTAGE	DIP	AZIMUTH	FOOTAGE	DIP	AZIMUTH

HOLE NO. 77-11 SHEET NO. 1 of 1

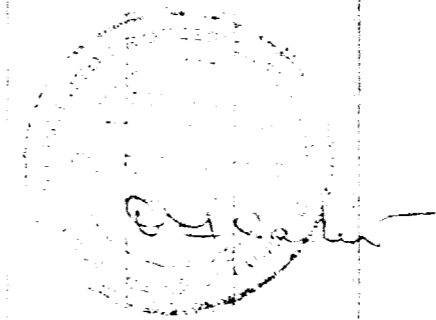
REMARKS _____

LOGGED BY O.F. CARTER

FOOTAGE		DESCRIPTION	SAMPLE			ASSAYS	
FROM	TO		NO.	SIZE INCHES	FOOTAGE FROM TO TOTAL	oz/TON	oz/TON
0	22	CASING					
22	144	MONZONITE, CS, white grey, much biotite R/A only sl. above 150 c/s background in one or two spots 107'-5" biotite schist, fine, dark, 45° 111'-4" " " " " " 118'-2" " " " " " 120-130 20% biotite schist in bands up to 8".					
144	158	BIOTITE SCHIST, fine, dark, dense, 45° contacts					
158	163	MONZONITE, AS ABOVE					
	163	END No R/A above 200 c/s CORE RACKED & STORED AT DRILL SITE					

EN. 5-1168

LABORATORY REPORT



DIAMOND DRILL RECORD

HOLE NO. 77-12 SHEET NO. Left
 REMARKS _____
 LOGGED BY O.F. CARTER

FOOTAGE	DIP	AZMUTH	FOOTAGE	DIP	AZMUTH

NAME OF PROPERTY CONS. SUMMIT MINES LTD.
 HOLE NO. 77-12 LENGTH 145'
 LOCATION 365'N, 130'E P#3 D.K. 415856 (SEE PLAN)
 LATITUDE ON LINE OF HOLE 75-4 AND DEPARTURE 35' LINE SOUTH (SEE PLAN)
 ELEVATION _____ AZIMUTH N34°W DIP -55°
 STARTED MAY 23, 1977 FINISHED MAY 26, 1977

FOOTAGE		DESCRIPTION	SAMPLE		ASSAYS	
FROM	TO		NO.	FOOTAGE FROM TO		OZ/TON
0	12	CASING				
12	97	MONZONITE, CS, MOTTLED, GREY-WHITE TO DARK, UP TO 40% biotite to 75' then about 20% 66'-1/2" DARK BAND 200 c/s 96'-2" CS SHINY BIOTITE @ 45°, No R/A BIOTITE SCHIST, dark, granular, indef. contacts. MONZONITE, LT, VERY CS. BIOTITE SCHIST, 45° MONZONITE, CS, 30% biotite 132'-2" biotite schist				
97	99					
99	111					
111	112					
112	145					
	145	END No R/A over 150 f/s, except at 66' No SAMPLES TAKEN CORE RACKED AND STORED AT SITE				

DIAMOND DRILL RECORD

NAME OF PROPERTY CONS. SUMMIT MINES LTD
 HOLE NO. 77-13 LENGTH 227'
 LOCATION 310' N, 280' E, P#3 U.K. 415856 (SEE PLAN)
 LATITUDE 150' LINE SOUTH OF HOLE DEPARTURE 76-2 (SEE PLAN)
 ELEVATION _____ AZIMUTH N 34° W DIP -45°
 STARTED MAY 27, 1977 FINISHED MAY 30, 1977

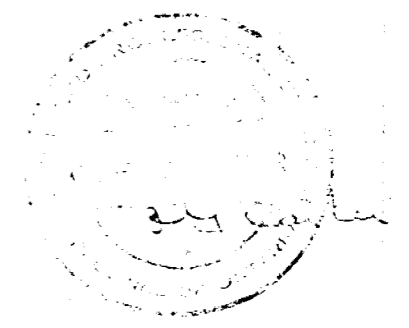
FOOTAGE	DIP	AZIMUTH	FOOTAGE	DIP	AZIMUTH

HOLE NO. 77-13 SHEET NO. 1 of 1

REMARKS _____

LOGGED BY O.F. CARTER

FOOTAGE		DESCRIPTION	SAMPLE			ASSAY	
FROM	TO		NO. SAMPLES	FOOTAGE FROM TO TOTAL			
0	30	CASING					
30	227	MONZONITE, MC-C, mottled, grey-white to dark, 20-30% biotite, included 5% undef. white dry qtz, very cs and pegmatitic sections after 166' Much very cs white plagioclase. 227' END No R/A EXCEPT 1" @ 200 c/s @ 137' background - 150 c/s CORE RACKED AND STORED AT SITE NO SAMPLES TAKEN.					



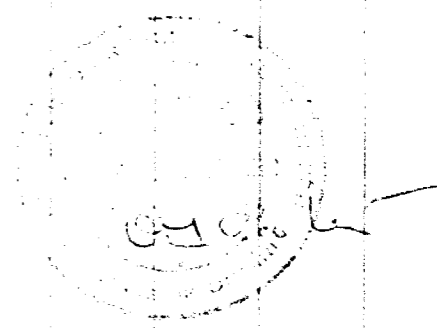
DIAMOND DRILL RECORD

NAME OF PROPERTY CONS. SUMMIT MINES LTD
 HOLE NO. 77-14 LENGTH 134'
 LOCATION 420'N, 335'W P#3 Cl. K 415 856 (SEE PLAN)
 LATITUDE 50' LINE EAST OF HOLE NO 76-1, 75' LINE SOUTH (SEE PLAN)
 ELEVATION _____ DEPARTURE _____
 STARTED May 30-77 AZIMUTH N 34°W DIP -45°
 FINISHED JUNE 1-77

FOOTAGE	DIP	AZIMUTH	FOOTAGE	DIP	AZIMUTH

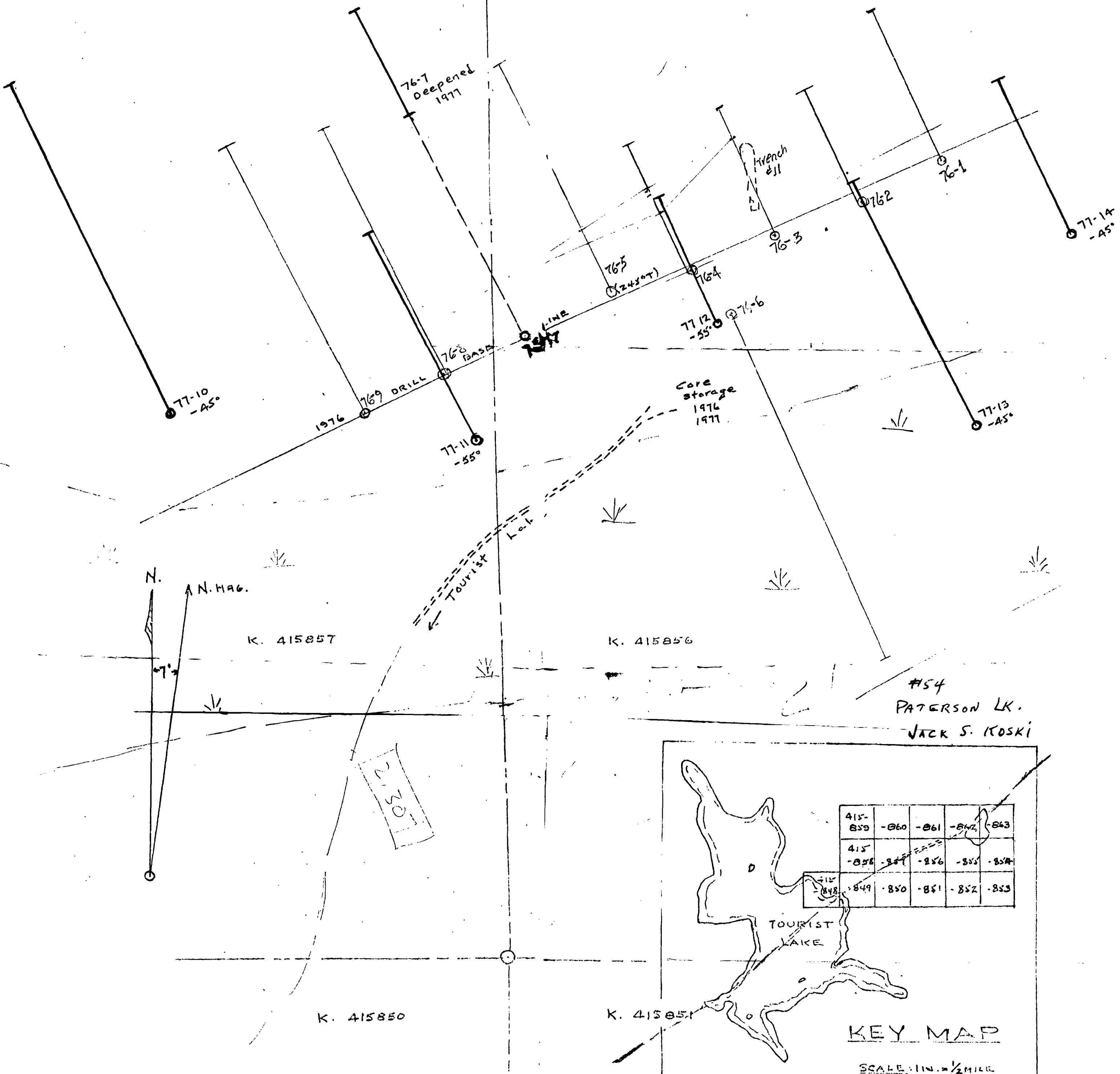
HOLE NO. 77-14 SHEET NO. 1 of 1
 REMARKS _____
 LOGGED BY O.F. CARTER

FOOTAGE		DESCRIPTION	SAMPLE			ASSAYS	
FROM	TO		NO.	SIZE PLACES	FOOTAGE FROM TO TOTAL	oz/TON	oz/TON
0	16	CASING					
16	107	MONZONITE, cs, mottled white to dark, much biotite Pinkish sects to 42' Included dioritic bands, 10% up to 3'. 150-200 g/s except for 2 narrow (1-2") bands up to 300 g/s					
107	109	BIOTITE SCHIST, mass., uniform, 70° contacts.					
109	114	MONZONITE, AS ABOVE, 2" incl. biotite schist.					
114	122	BIOTITE SCHIST, AS ABOVE 118' - 12" low angle monzonite 120-122 Numerous indef. garnets up to 5 mm.					
122	134	MONZONITE, AS ABOVE.					
	134	END NO R/A EXCEPT AS NOTED. NO SAMPLES TAKEN. CORE RACKED AND STORED AT SITE.					



L.M. 9-1108

L.M. 9-1108



CONSOLIDATED SUMMIT MIN. LTD.
 TOURIST LAKE - KENORA DIST. - ONTARIO.

PLAN SHOWING 1977 DIAM. DRILLING
 SCALE: 1" = 40'

3/9/77

WORKING COPY
 8/21/77

