

TREELINED LAKE GRAPHITE PROSPECT
Treelined Lake Area (G-2651)
Kenora Mining Division - 10, Ontario

ADDENDUM
to
Metallurgical Report Submitted
February 13, 2003

2 . 27269

GEOLOGICAL DISCUSSION:

During the month of July 2002, seven field days was spent traversing in a more or less north to south directions, over the 8 contiguous single -16 hectare units. The author was assisted in the field by geologist Anthony Pryslak, and prospectors George Zebruck and James Resky.

The purpose of the ground survey was to examine the discovered graphite zones - trenched - within the highly metamorphosed sediments.

About 28 km was walked over the ground including the overgrown trail. Overall rock outcropping was very sparse and the bush was extremely thick to matted. This environment is an accumulation of new growth from timbering and blow-down. Visibility is very limited.

The two primary rock units are of Precambrian (Archean) Age. The labeled # 1 unit are highly metamorphosed sediments consisting of feldspar, quartz, biotite and +/- garnet. They resemble a schist. In the trenches, graphite bedding is noted and also present to a lesser degree in the exposed sediments to the south. The trenches are also becoming overgrown.

To the north, the ground rises shapely. A northeasterly trending assumed fault escarpment marks this geological change. The rocks to the north are more granitic (intrusive) in nature. Exposure was limited.

Overburden coverage related to trenching varies but a rough estimate would be around a metre in the trenched area.

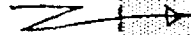
What was observed was quite interesting. To better evaluate this discovery site, the author recommends the following exploration procedures: 1/. Heavy excavator work to open up the trench areas for better exposure. An small back-hoe was previously used and 2/. Diamond drilling for third dimension and fresh rock samples.

Report by Al. Mowat, C.E.T.
February 27th, 2004



KENORA MINING DIVISION - 10, ONTARIO
TREELINED LAKE AREA PLAN G-2651

ZEBRUCK &
KUEHNBAUM
CLAIM GROUP



898893

898894

895625

898891

898892

124

895628

895627

895626

1247016

**TREELINED LAKE
GRAPHITE PROSPECT
GEOLOGY LEGEND**

**PHANEROZOIC
CENOZOIC
QUATERNARY
PLEISTOCENE & RECENT
Clay, sand and gravel**

PRECAMBRIAN

2 Granitic Intrusive

1 Metasediments

SYMBOLS

 Trail

 Trench

 Claim post & claim line

 Traverse line

 Fault

 Escarpment

Work Report Summary

Transaction No: W0410.00337 Status: APPROVED
 Recording Date: 2004-MAR-01 Work Done from: 2002-JUL-04
 Approval Date: 2004-MAR-16 to: 2002-JUL-04

Client(s):
 303602 EMERALD FIELDS RESOURCE CORPORATION

Survey Type(s):
 PROSP

Work Report Details:

Claim#	Perform	Perform Approve	Applied	Applied Approve	Assign	Assign Approve	Reserve	Reserve Approve	Due Date
K 895625	\$537	\$537	\$537	\$537	\$0	0	\$0	\$0	2005-MAR-02
K 895626	\$538	\$538	\$538	\$538	\$0	0	\$0	\$0	2006-MAR-02
K 895627	\$537	\$537	\$537	\$537	\$0	0	\$0	\$0	2006-MAR-02
K 895628	\$538	\$538	\$538	\$538	\$0	0	\$0	\$0	2006-MAR-02
K 898891	\$537	\$537	\$537	\$537	\$0	0	\$0	\$0	2006-MAR-02
K 898892	\$538	\$538	\$538	\$538	\$0	0	\$0	\$0	2006-MAR-02
K 898893	\$537	\$537	\$537	\$537	\$0	0	\$0	\$0	2005-MAR-02
K 898894	\$539	\$539	\$539	\$539	\$0	0	\$0	\$0	2005-MAR-02
	\$4,301	\$4,301	\$4,301	\$4,301	\$0	\$0	\$0	\$0	

External Credits: \$0

Reserve: \$0 Reserve of Work Report#: W0410.00337

 \$0 Total Remaining

Status of claim is based on information currently on record.



Date: 2004-MAR-16

GEOSCIENCE ASSESSMENT OFFICE
933 RAMSEY LAKE ROAD, 6th FLOOR
SUDBURY, ONTARIO
P3E 6B5

ALASDAIR JAMES MOWAT
EMERALD FIELDS RESOURCE CORPORATION
1546 PINE PORTAGE RD.,
KENORA, ONTARIO
P9N 2K2 CANADA

Tel: (888) 415-9845
Fax: (877) 670-1555

Submission Number: 2.27269
Transaction Number(s): W0410.00337

Dear Sir or Madam

Subject: Approval of Assessment Work

We have approved your Assessment Work Submission with the above noted Transaction Number(s). The attached Work Report Summary indicates the results of the approval.

At the discretion of the Ministry, the assessment work performed on the mining lands noted in this work report may be subject to inspection and/or investigation at any time.

If you have any question regarding this correspondence, please contact STEVEN BENETEAU by email at steve.beneteau@ndm.gov.on.ca or by phone at (705) 670-5855.

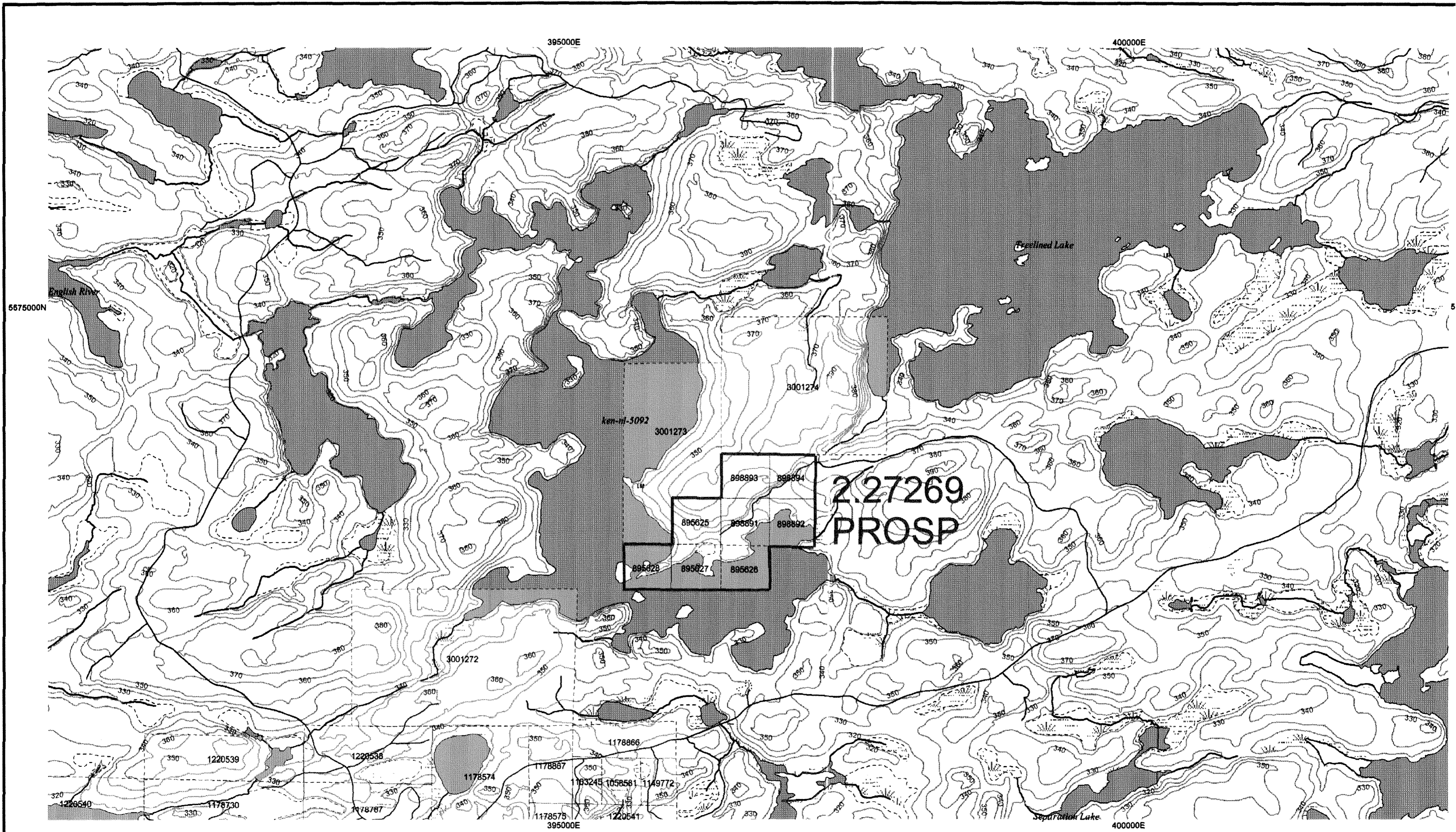
Yours Sincerely,



Ron C. Gashinski
Senior Manager, Mining Lands Section

Cc: Resident Geologist
Emerald Fields Resource Corporation
(Claim Holder)

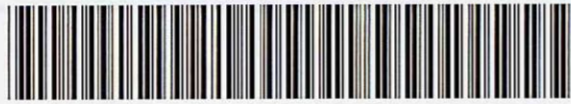
Assessment File Library
Emerald Fields Resource Corporation
(Assessment Office)



UTM Zone 15
5000m grid



52L08SW2015 2.27269 TREELINED LAKE



52L08SW2015 2.27269

TREELINED LAKE

210

ONTARIO CANADA

MINISTRY OF NORTHERN DEVELOPMENT AND MINES
PROVINCIAL MINING RECORDERS' OFFICE

Mining Land Tenure Map

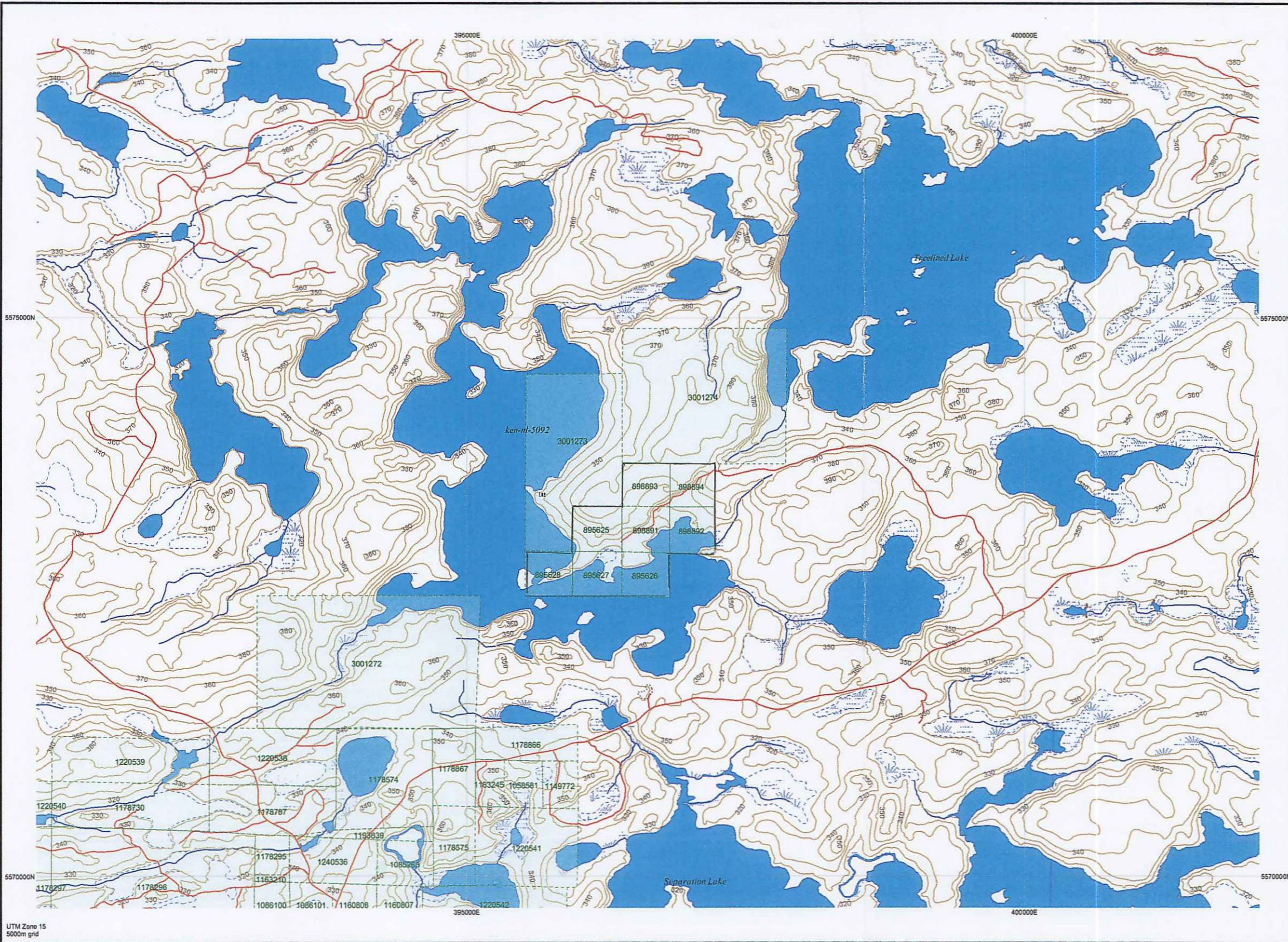
Date / Time of Issue: Fri Feb 20 14:22:02 EST 2004

TOWNSHIP / AREA
TREELINED LAKE

PLAN
G-2651

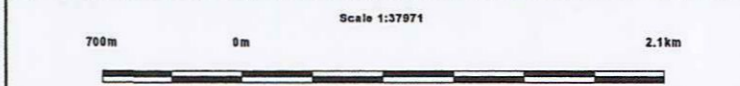
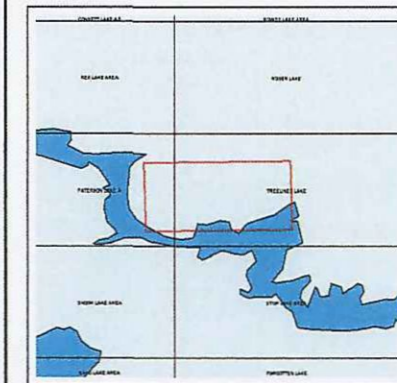
ADMINISTRATIVE DISTRICTS / DIVISIONS

Mining Division Kenora
Land Titles/Registry Division KENORA
Ministry of Natural Resources District KENORA



TOPOGRAPHIC

- Administrative Boundaries
- Township
- Concession, Lot
- Provincial Park
- Indian Reserve
- Cliff, Pit & Pile
- Contour
- Mine Shafts
- Mine Headframe
- Railway
- Road
- Trail
- Natural Gas Pipeline
- Utilities
- Tower
- Freehold Patent
- Surface And Mining Rights
- Surface Rights Only
- Mining Rights Only
- Leasehold Patent
- Surface And Mining Rights
- Surface Rights Only
- Mining Rights Only
- Licence of Occupation
- Uses Not Specified
- Surface And Mining Rights
- Surface Rights Only
- Mining Rights Only
- Land Use Permit
- Order In Council (Not open for staking)
- Water Power Lease Agreement
- Mining Claim
- Filled Only Mining Claims



LAND TENURE WITHDRAWAL DESCRIPTIONS

Identifier	Type	Date	Description
609	Wsm	Jan 1, 2001	LUP DISPOSITION LANDING /ACCESS AREA
694	Wsm	Jan 1, 2001	FLOODING H.E.P.C. ELEVATION: 1049 FT FILE: 34179 PLAN: U2-27 H.I C. PLAN: 800-3359
699	Wsm	Jan 1, 2001	FLOODING ELEVATION: 5 FT FILE: 34179 & 69307
719	Wsm	Jan 1, 2001	FLOODING H.E.P.C. ELEVATION: 1049 FT TERM 99 YRS FROM 28 MAY 1956 FILE: 34179 VOL3

Those wishing to stake mining claims should consult with the Provincial Mining Recorders' Office of the Ministry of Northern Development and Mines for additional information on the status of the lands shown hereon. This map is not intended for navigation, survey, or land title determination purposes as the information shown on this map is compiled from various sources. Completeness and accuracy are not guaranteed. Additional information may also be obtained through the local Land Titles or Registry Office, or the Ministry of Natural Resources.

The information shown is derived from digital data available in the Provincial Mining Recorders' Office at the time of downloading from the Ministry of Northern Development and Mines web site.

General Information and Limitations

Contact Information:
Provincial Mining Recorders' Office
Wildcat Green Miller Centre 933 Ramsey Lake Road
Subsury ON P3E 6B5
Home Page: www.mndm.gov.on.ca/MNDMMINES/LANDS/mismnpge.htm

Toll Free
Tel: 1 (888) 415-9845 ext 57
Fax: 1 (877) 670-1444

Map Datum: NAD 83
Projection: UTM (6 degree)
Topographic Data Source: Land Information Ontario
Mining Land Tenure Source: Provincial Mining Recorders' Office

This map may not show unregistered land tenure and interests in land including certain patents, leases, easements, right of ways, flooding rights, licences, or other forms of disposition of rights and interest from the Crown. Also certain land tenure and land uses that restrict or prohibit free entry to stake mining claims may not be illustrated.

TREELINED LAKE
 GRAPHITE PROSPECT
 GEOLOGY LEGEND

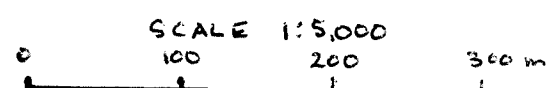
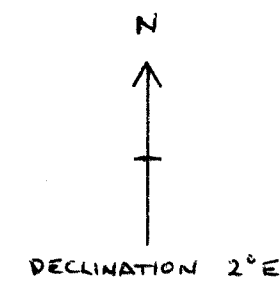
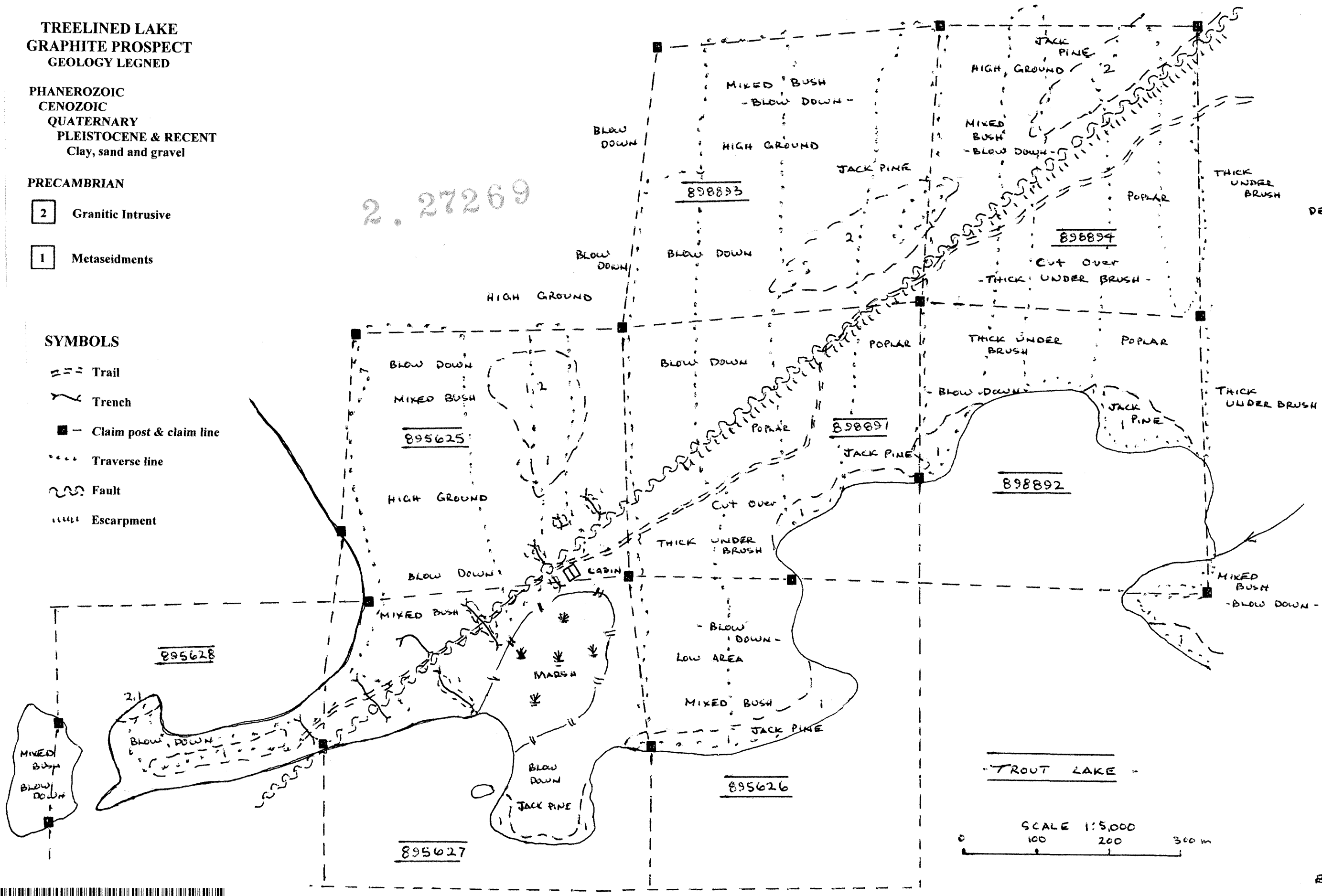
PHANEROZOIC
 CENOZOIC
 QUATERNARY
 PLEISTOCENE & RECENT
 Clay, sand and gravel

- PRECAMBRIAN
- 2 Granitic Intrusive
 - 1 Metasediments

SYMBOLS

- == Trail
- ~ Trench
- - Claim post & claim line
- Traverse line
- ~ Fault
- ||||| Escarpment

2.27269



BY: A. MOWAT
 2004

