



52L11SE0003 10 SNOWSHOE LAKE

010

Diamond Drilling

Area of Snowshoe Lake

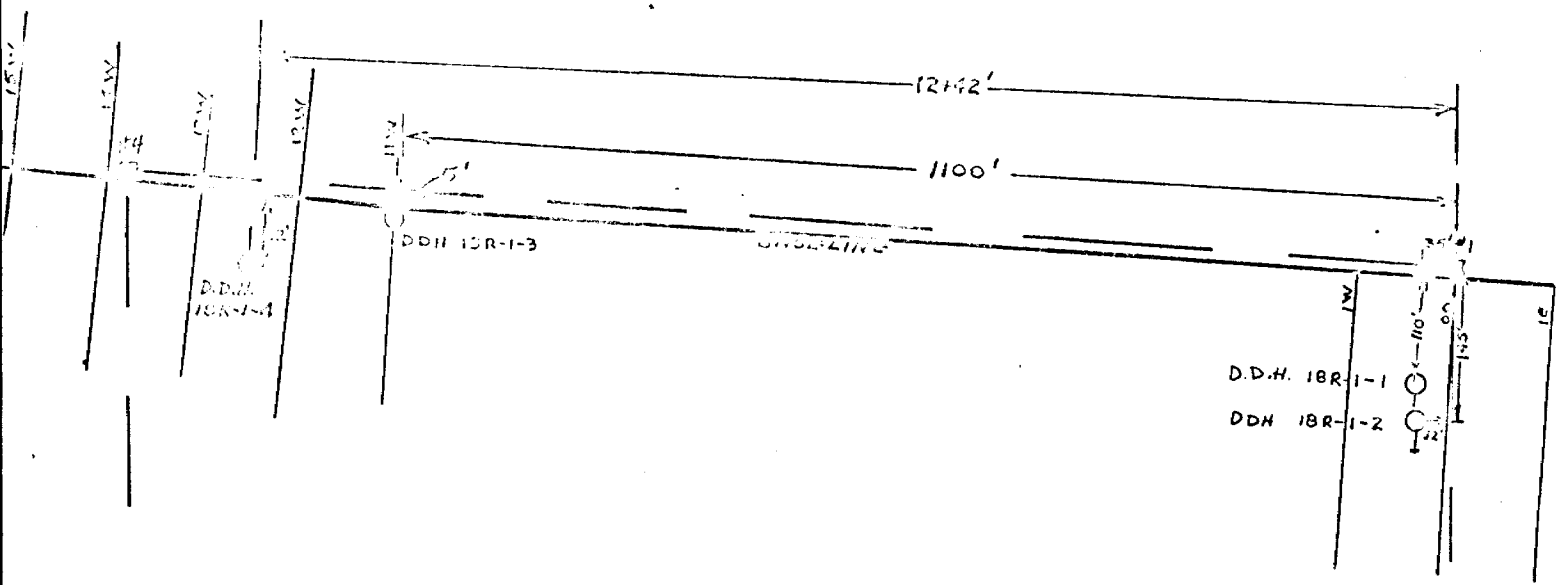
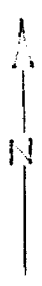
Report NO 10

Work performed by: L. B. Holliday

Claim NO	Hole NO	Footage	Date	Note
K 202611	18R-1-1	55')	
	18R-1-2	50')	
	18R-1-3	48')	
	18R-1-4	50')	
)	July/69
K 202612	18R-1-5	51')	
	18R-1-6	50')	

6/304

Notes: 35/70



612

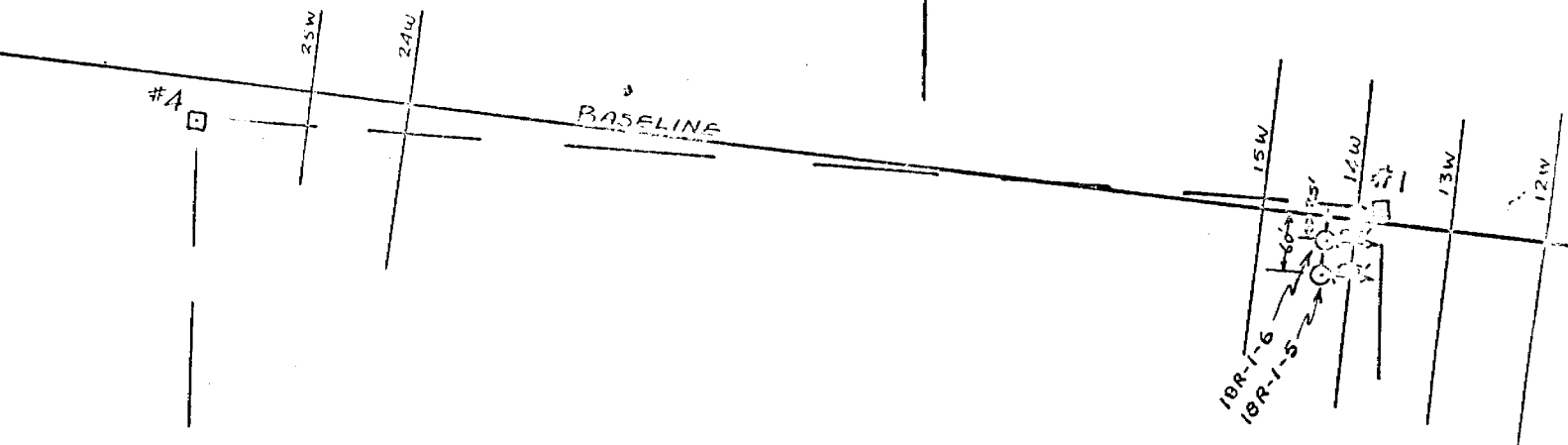
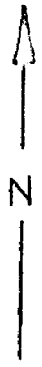
CLAIM K 2-2611

LOCATION SKETCH
DRILL HOLES
1BR-1-1, 1BR-1-2, 1BR-1-3
1BR-1-4

SNOWSHOE LAKE, ONT
SCALE: 1" = 200'

L.B. Halliday

#2



611

CLAIM K 202612

LOCATION SKETCH
DRILL HOLES
1BR-1-5 and 1BR-1-6

Snowshoe Lake, Ont.

SCALE 1" = 200'

#3

#2

LS Halliday

LOCATION: 0+35'W - 1+10'S

35' West and 110'S from No. 1 Post, Claim 202611

AZIMUTH: 180°

DIAMOND DRILL RECORD

HOLE NO 18R-1-1

PROPERTY: ~~FER~~ CLAIM GROUP 18R-1

SNOWSHOE LAKE, ONTARIO

CLAIM NO: 202611

DIP: -45°

LENGTH: 55'

ELEVATION: —

STARTED: July 5, 1969

CORE SIZE: XRT

DATE LOGGED: July 6/69

SECTION:

COMPLETED: JULY 6

DIP TESTS: —

LOGGED BY: L.B. HALLADAY

PURPOSE: TO TEST ZONE OF MODERATE SURFACE RADIOACTIVITY

35/70 - Lorne Halladay
Snow-shoe lake

FOOTAGE		DESCRIPTION	SAMPLE NO	FOOTAGE		LENGTH	U ₃ O ₈ (e)				
from	to			from	to						
0.0	1.5	OVERBURDEN									
1.5	55.5	BIOTITE GNEISS: fine grained, grey, with quartz, white feldspar and biotite. Occasional specks of pyrite. Gneissosity at 40° to core axis. Cut by numerous narrow dykes and stringers of Granodiorite: medium to coarse grained, light grey, composed of quartz, white feldspar, and varying amounts of biotite and minor muscovite. Local concentrations of biotite at dyke borders. Minor specks of pyrite. 3.7; 4.8; 5.5: 1" stringers Granodiorite 6.6: 2" " 8.3-16.1: Granodiorite - radioactivity 1 1/4 X 22.0-23.7; 26.6-27.3; 29.3-29.5; 29.6-30.0; - Granodiorite 31.5-40.7: 40% Granodiorite. Radioactivity 1 1/4 X 49.0-49.6: Granodiorite.									
			4206	8.3	16.1	7.8	0.02				
			4207	31.5	40.7	9.2	0.01				
55.5		END OF HOLE									

L.B. Halladay

Drilled by Griffith Bros. Ltd du Benoit, Man. Core at Toronto Office, Dome Exploration.

LOCATION: 11+00'W - 0+05'S
 1100'W and 5'S of Post No. 1 claim 202611
 AZIMUTH: 0°

DIAMOND DRILL RECORD

HOLE NO 18R-1-3

PROPERTY: CLAIM GROUP 18R-1
 SNOWSHOE LAKE, ONTARIO
 CLAIM NO: 202611, 202616

DIP: -45° LENGTH: 48.0' ELEVATION: —
 STARTED JULY 8, 1969 CORE SIZE: XRT DATE LOGGED: July 10/69
 COMPLETED JULY 9 DIP TESTS: —

SECTION:
 LOGGED BY: L. B. HALLADAY

PURPOSE: TO TEST ZONE OF MODERATE RADIOACTIVITY AND STAINING (URANOPHANE?)

FOOTAGE		DESCRIPTION	SAMPLE NO	FOOTAGE		LENGTH	U ₃₀₈ (e)				
from	to			from	to						
0.0	2.0	BIOTITE GNEISS: fine grained, dark grey, composed of fine quartz, feldspar, biotite, and minor disseminated pyrite.									
2.0	13.3	GRANODIORITE: medium grained, light grey, of quartz, feldspar, biotite and minor muscovite. Some included gneiss. Radioactivity up to 1 1/2 x in spots.	4211	2.0	13.3	11.3	0.01				
13.3	48.0	BIOTITE GNEISS: with numerous injected granodiorite dykelets, stringers and irregular blebs.									
		16.2-17.2; 17.3-17.5; 18.2-18.5; 18.7-22.0; 22.3-23.4: granodiorite, radioactivity up to 1 1/2 x in spots.	4212	16.2	22.7	6.5	0.02				
		23.1; 23.3, 24.3, 25.2: 1" granodiorite.									
		25.9-26.6; 27.7-28.3, 29.6-30.0: granodiorite									
		30.1-30.4; 30.6-31.1; 31.4-31.7; 32.1-32.3; 33.0-33.7; 34.5-35.1: 50% granodiorite radioactivity up to 1 1/4 x	4213	30.1	35.6	5.5	Trace				
		35.6-40.2: slightly coarser and darker grey granodiorite, more pyrite, slightly higher radioactivity up to 1 1/2 x	4214	35.6	40.2	4.6	0.02				
		40.5, 47.4: 1" granodiorite									
		43.8-44.1; 46.7-47.1: granodiorite									
	48.0	END OF HOLE									

L. B. Halladay

Drilled by Griffith Bros., Lac du Bonnet, Man. Core stored at Dome Exploration Office

LOCATION: 12+42' W - 0+77' S

1242' W and 72' S of Post No. 1 claim 202611

AZIMUTH: 0°

DIAMOND DRILL RECORD

HOLE NO 18R-1-4

PROPERTY: CLAIM GROUP 18R-1

SNOWSHOE LAKE, ONTARIO

CLAIM NO: 202611

DIP: -45°

LENGTH: 50'

ELEVATION: —

STARTED: July 9/69

CORE SIZE: XRT

DATE LOGGED: July 10/69

SECTION:

COMPLETED: July 10/69

DIP TESTS: —

LOGGED BY: L.B. HALLADAY

PURPOSE: TO TEST ZONE OF MODERATE SURFACE RADIOACTIVITY

FOOTAGE		DESCRIPTION	SAMPLE NO	FOOTAGE		LENGTH	U ₃ O ₈ (e)												
from	to			from	to														
0.0	5.2	GRANITE: coarse grained, pink, with some intermixed granodiorite, slightly radio-active.	4215	0.0	5.2	5.2	Trace												
5.2	50.0	BIOTITE GNEISS: fine grained, grey, cut by numerous small, grey, granodiorite and pink granite dykelets. 7.3: 1" granodiorite. 7.7-8.2; 8.4-9.3; 9.6-10.0: granodiorite 12.6-14.5: coarse granodiorite, radioactivity up to 1 1/2 x. 14.9, 15.2: 1" granodiorite 16.1-18.0; 19.7-22.7; 23.3-28.0: granodiorite, radioactivity up to 1 1/4 x 28.0-31.3: granite, upper contact indistinct radioactivity 1 1/4 x 33.3-35.1; 35.7-40.4; 40.9-43.7: granite radioactivity up to 1 1/4 x. 44.6-44.8; 44.9-45.4; 46.2-46.8; 47.3-47.5: granodiorite. 48.1-50.0: granite.	4216	12.6	14.5	1.9	0.03												
			4217	16.1	28.0	11.9	0.01												
			4218	28.0	31.3	3.3	0.01												
			4219	33.3	43.7	10.4	0.01												
	50.0	END OF HOLE																	
<p style="text-align: center;">L.B. Halladay</p> <p>Drilled by Griffith Bros, Lac du Bonnet, Man. Core stored at Dome Exploration Office</p>																			

LOCATION: 14+30' W - 0+25' S
 55' W and 25' S from Post No. 1 Claim 202612
 AZIMUTH: 0°

DIAMOND DRILL RECORD

HOLE NO 18R-1-6

PROPERTY: CLAIM GROUP 18R-1
 SNOWSHOE LAKE, ONTARIO
 CLAIM NO: 202612, 202615

DIP: -45° LENGTH: 50' ELEVATION: —

STARTED: JULY 13, 1969 CORE SIZE: XRT DATE LOGGED: JULY 16/69 SECTION:

COMPLETED: JULY 14 DIP TESTS: — LOGGED BY: L. B. HALLADAY

PURPOSE: TO TEST ZONE OF MODERATE SURFACE RADIOACTIVITY

FOOTAGE		DESCRIPTION	SAMPLE NO	FOOTAGE		LENGTH	U ₃₀₈ (e)						
from	to			from	to								
0.0	31.7	GRANITE: coarse grained, pink, massive, minor biotite. Minor radioactivity - up to 1 1/2 x background in isolated spots.	4224	5.0	15.0	10.0	Trace						
31.7	40.0	GRANDIORITE: medium to coarse grained, light grey, quartz, feldspar, minor biotite. Very minor radioactivity	4225	31.7	40.0	8.3	Trace						
40.0	41.4	BIOTITE GNEISS: fine grained, dark grey. Gneissosity at 35° to core axis.											
41.4	44.9	GRANDIORITE: with a few short sections of gneiss.											
44.9	46.3	BIOTITE GNEISS											
46.3	48.3	GRANDIORITE											
48.3	50.0	BIOTITE GNEISS: with minor injected granodiorite											
	50.0	END OF HOLE											
<p>L. B. Halladay</p> <p>Drilled by Griffith Bros., Lac du Bonnet, Man. Core stored at office of DOME EXPLORATION</p>													