



52M01SE0171 38 BALL TWP

010

Diamond Drilling

Township of BALL

Report NO 38

Work performed by: W.L. Hermiston

Claim NO	Hole NO	Footage	Date	Note
KRL 375491	79-1	444.3	May/79	(1) (2)

Notes:

(1) #41-79

(2) MEAP RL-74

Bail

70.3

Map location sketch.

Submitted by - Wayne H. Hester

Core Size - 1 1/2" (1 1/4" Diameter)

TWP LINE

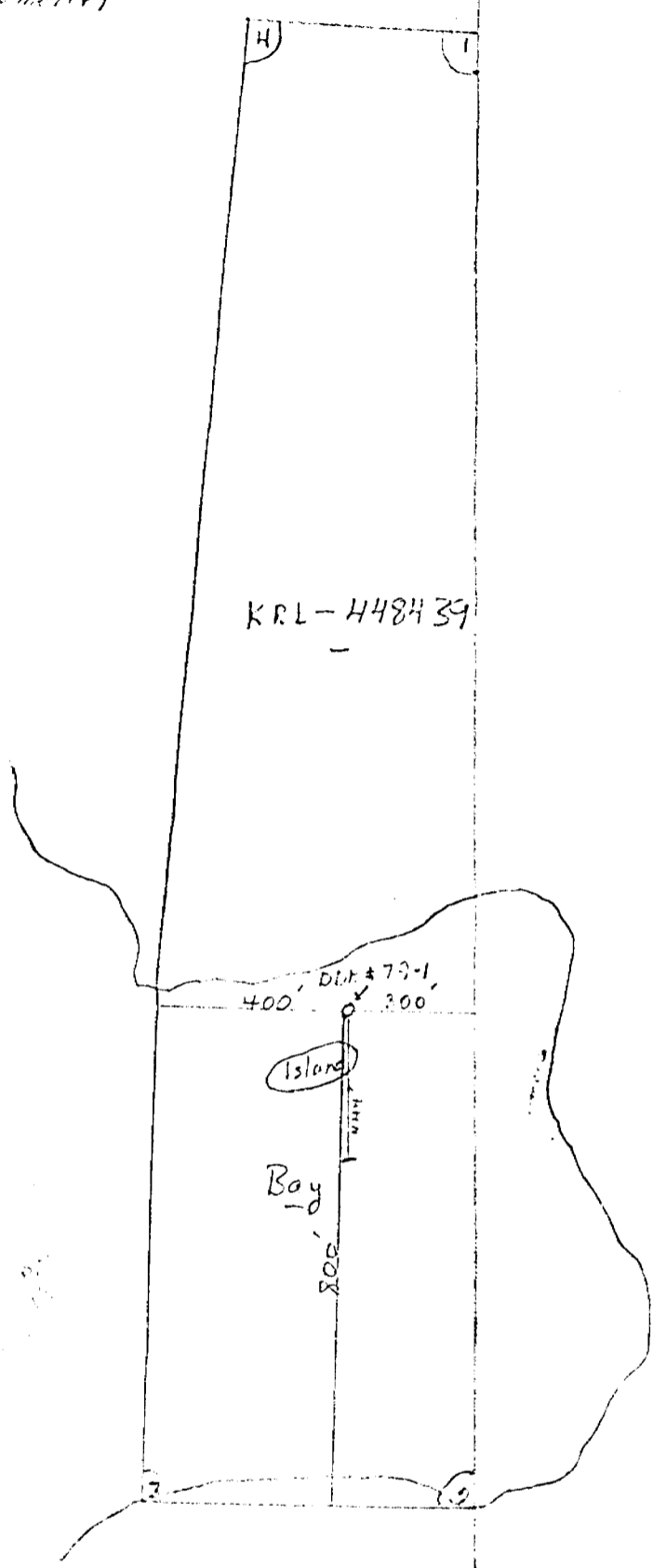
KRL-448439

Dist # 79-1  
400' 200'

Island

Bay

800'





Diamond  
Drilling  
Log

Fill in on  
every page

Hole No. 79-1 Page No. 1 of 4

Drilling Company HERMISTON - WOOD		Collar Elevation on ice	Bearing of hole from true North 170°	Total Footage 444.3	Dip of Hole at Collar 45	Location of hole in relation to a fixed point on the claim.  <i>See attached Sketch</i>	Map Reference No. M. 2136	Claim No. KRL 375491
Date Hole Started March 12, 1979	Date Completed April 16, 1979	Date Logged Apr/23/79	Logged by W. HERMISTON		Fr.		Location (Twp., Lot, Con. or Lat. and Long.) BALL TWP.	
Exploration Co., Owner or Optionee HERMISTON - WOOD		Date Submitted May 1/79	Submitted by (Signature) <i>Wayne Hermiston</i>		Fr.		Property Name HERMISTON - WOOD	
					Fr.			
					Fr.			

Footage		Rock Type	Description Co'our, grain size, texture, minerals, alteration, etc.	Planar Feature Angle*	Core Specimen Footage †	Your Sample No.	Sample Footage		Assays †
From	To						From	To	
0.0	18.0	CASING							
18.0	90.4	MINERALIZED QUARTZ	Very siliceous; uniform to mottled grey colour; some sections have 1-2% chlorite; mineralization almost all pyrite; a few specks of chalcopyrite.				63.0	68.0	5.0
			34.4 - 40.0 quartz is more brecciated and contains more pyrite (up to 15%); few specks chalcopyrite.				78.0	83.0	5.0
			50.0 7 cm wide quartz porphyry dike at 70° c.a.						
90.4	106.1	SLIGHTLY ALTERED QUARTZ	Very siliceous; not as siliceous as above section; light grey; fine-grained; fractured and brecciated in places; well mineralized with 2-8% pyrite and some chalcopyrite; rock becomes more altered-looking towards 106.1				98.0	103.0	5.0
106.1	145.2	MINERALIZED ZONE	Siliceous; brecciated; dark grey to brown; mineralized with 10-20% pyrite; chlorite is abundant from 106' to 116'; foliation is 40° c.a.				133.0	138.0	5.0



*Hermiston - Wood*

Fill in on  
every page

Hole No. 79-1  
Page No. 2 of 4

Drilling Company		Collar Elevation	Bearing of hole from true North	Total Footage	Dip of Hole at Collar	Location of hole in relation to a fixed point on the claim.	Map Reference No.	Claim No.
Date Hole Started	Date Completed	Date Logged	Logged by				Location (Twp., Lot, Con. or Lat. and Long.)	
Exploration Co., Owner or Optionee		Date Submitted	Submitted by (Signature)				Property Name	

Footage		Rock Type	Description Colour, grain size, texture, minerals, alteration, etc.	Planar Feature Angle *	Core Specimen Footage †	Your Sample No.	Sample Footage		Sample Length	Assays †
From	To						From	To		
145.2	156.2	MOTTLED QUARTZ	Very Siliceous; light grey, fine-grained; contains chlorite giving rock an altered look; slightly brecciated and fractured in places; fractures filled with chlorite and sulphides (mainly pyrrhotite).							
156.2	170.5	MINERALIZED QUARTZ	Dark grey; very siliceous; occasionally slightly fractured and brecciated; chlorite fills fractures; mineralization consists of pyrite and pyrrhotite (1-2% each).							
170.5	188.0	MAFIC DIKE ZONE	Dark green; fine to medium-grained; generally poorly mineralized except around 170.5 (pyrite and pyrrhotite); contacts generally obscure.							
188.0	193.0	MINERALIZED ZONE	Siliceous; dark grey; brecciated; mineralization consists of 10-15% pyrrhotite & pyrite; lower contact is sharp at 40° c.a.							
193.0	228.0	SILICEOUS ZONE	Dark grey; very fine-grained; some sections are red due to fine-grained jasper; fairly massive; a few chlorite filled fractures; very little mineralization (1% pyrite)							

*Hermiston-Wood*

Fill in on  
every page

Hole No. 79-1 Page No. 3 of 4

Drilling Company	Collar Elevation	Bearing of hole from true North	Total Footage	Dip of Hole at Collar	Location of hole in relation to a fixed point on the claim.	Map Reference No.	Claim No.
Date Hole Started	Date Completed	Date Logged	Logged by	Ft.		Location (Town, Lot, Con. or Lat. and Long.)	
Exploration Co., Owner or Optionee	Date Submitted	Submitted by (Signature)	Ft.	Ft.			
			Ft.	Ft.			Property Name

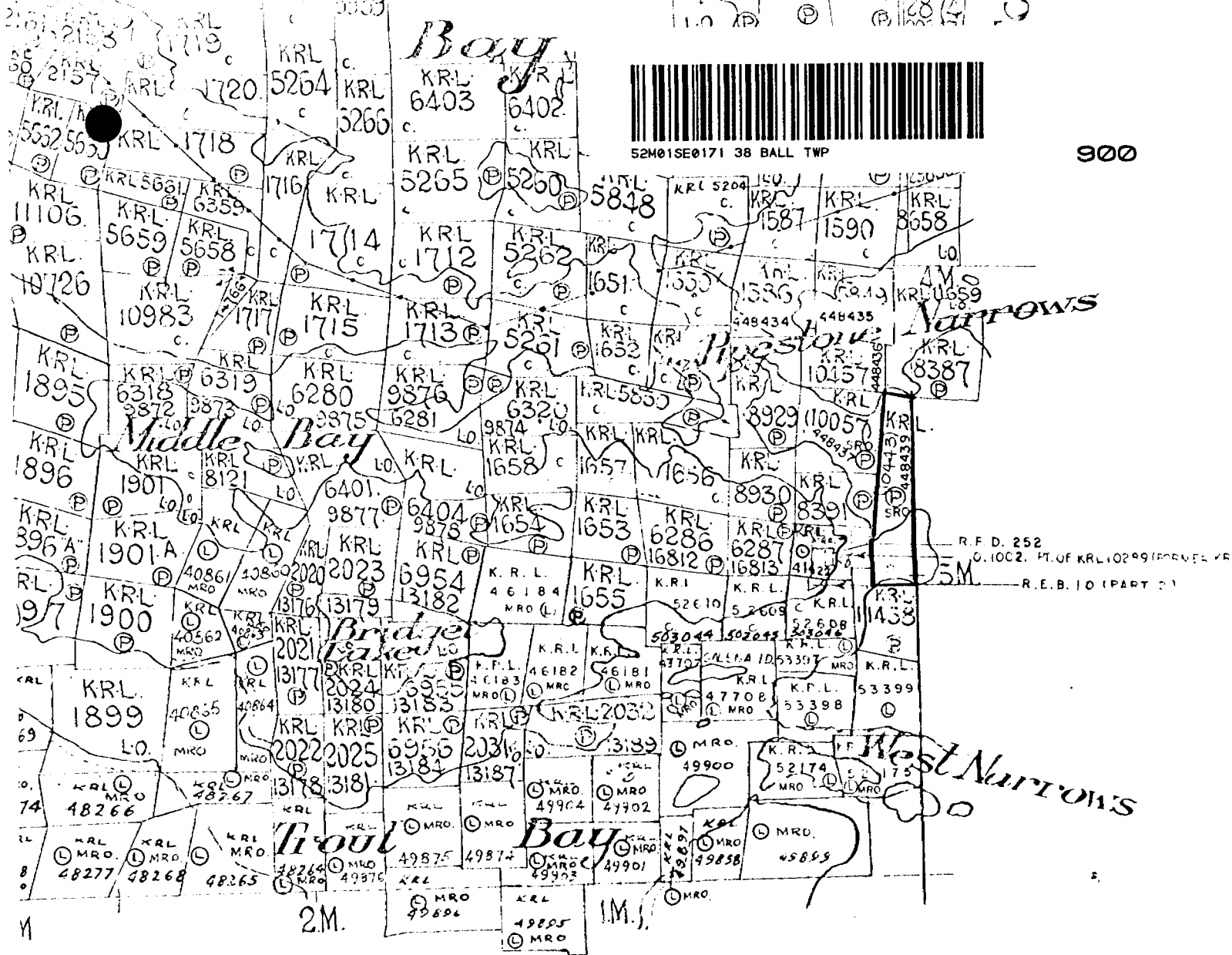
Footage		Rock Type	Description Colour, grain size, texture, minerals, alteration, etc.	Planar Feature Angle*	Core Specimen Footage †	Your Sample No.	Sample Footage		Sample Length	Assays ‡
From	To						From	To		
228.0	234.2	CHLORITE-RICH	Medium to dark green; well foliated but in many different directions; abundant chlorite and a few red garnets; no mineralization							
234.2	249.2	ALTERED ANDESITE	Light green, fine to medium-grained; siliceous in places; abundant carbonate stringers criss-cross the core; rock is mottled in places and may be due to brecciation; upper contact is sharp while lower contact is very gradational; no mineralization							
249.2	266.0	LIGHT QUARTZ ZONE	Light grey to greenish-white; very fine grained; siliceous; has a mottled appearance; more carbonate in this area; 1-2% pyrite.							
			253.4-256.0 Lamprophyre dike - black; medium grained; specks of pyrite.							
266.0	381.3	QUARTZ-RICH AND ALTERED ANDESITE	Grey to green in colour; fine to medium grained; foliated in places (45° c.a.); predominately siliceous but more altered-looking and chloritic in places; contains 5-10% pyrrhotite and 1-5% pyrite as disseminated crystals				363.0	368.0	5.0	

**Diamond  
 Drilling  
 Log**

Fill in on every page → Hole No. 79-1 Page No. 4 of 7

Drilling Company <i>Hermiston-Wood</i>	Collar Elevation	Bearing of hole from true North	Total Footage	Dip of Hole at Collar	Location of hole in relation to a fixed point on the claim.	Map Reference No.	Claim No.	
Date Hole Started	Date Logged	Logged by		Ft.		Location (Twp., Lot, Con. or Lat. and Long.)		
Date Completed	Date Submitted	Submitted by (Signature)		Ft.				
Exploration Co., Owner or Optionee				Ft.	Property Name			

Footage		Rock Type	Description <small>Colour, grain size, texture, minerals, alteration, etc.</small>	Planar Feature Angle *	Core Specimen Footage †	Your Sample No.	Sample Footage		Sample Length	Assays †
From	To						From	To		
381.3	394.4	SILICEOUS ZONE	Light grey; very fine-grained and siliceous; fractured and brecciated throughout; chlorite is abundant in fractures; 1-2% pyrite & pyrrhotite as disseminations.							
394.4	437.0	SILICEOUS ANDESITE	Grey to green in colour; very fine-grained; almost pure quartz in sections; strongly foliated around 405.0 (at 20° c.a.); has a banded appearance; contains 5-10% pyrrhotite and 1-5% pyrite.				423.0	428.0	5.0	
			398.5-404.5 Lamprophyre dike - fine-grained; dark grey; sharp contacts; unmineralized.							
437.0	444.3	LAMPROPHYRE DIKE	Fine-grained; dark greenish grey; unmineralized							
			444.3 END OF HOLE							



AHY

NOTES

400' surface rights reservation along the shores of all lakes and rivers.

M.2136

Ball Twp. #41-79 W.L. HERMISTON  
+ MEAP RL-74  
M.2136