

Redstar Gold Corporation

**Physical Work Submission Report
January , 2003**

**PIPESTONE SOUTH PROPERTY
MECHANICAL STRIPPING**

2 . 24871.

**BALL/INDIAN HOUSE LAKE Townships
Red Lake Mining Division**

2 . 24871



Submitted by:
Bob Singh
Redstar Gold Corporation
611-675 W. Hastings St
Vancouver BC



52M01SE2025 2.24871 BALL

010

Introduction :

This report presents a brief regional geological description and geochemical analysis of the rocks exposed in 3 showings and along road cuts on Pipestone South property. During the month of August 2002, a 9-day physical stripping, trenching, and channel sampling program was completed. Included is a breakdown of the type of equipment used, the hours and dates that the equipment was used, the man-hours that were spent on this program and a map showing the locations of the stripped areas and significant results.

Geological Description :

The Red Lake greenstone belt records a 300 million year history of episodic volcanism, sedimentation, deformation, and mineralization. The Balmer assemblage, host to current and past-producing gold mines, consists of tholeiitic and komatiitic lava flows, ultramafic intrusive rocks, intercalated with 2.98-2.96 billion year old (Ga) felsic volcanic, clastic, and chemical sedimentary rocks. The Ball assemblage comprises crustally contaminated komatiite, tholeiitic basalt, 2.94-2.92 Ga calc-alkaline, felsic volcanic rocks, and stromatolitic carbonate. The Slate Bay assemblage of quartz-rich wacke and conglomerate, with an age less than 2.91 Ga, records accumulated Balmer-age material, prior to the 2.89 Ga intermediate pyroclastic volcanism and sedimentation of the Bruce Channel assemblage. The Confederation assemblage rests unconformably on the Balmer, and consists of basal conglomerate, 2.74 Ga FIII-type rhyolite, tholeiitic basalt with volcanogenic-massive-sulphide-style alteration-mineralization, and 2.73 Ga calc-alkaline pyroclastic rocks. Polyphase deformation involved pre-Confederation tilting and at least two episodes of post-Confederation deformation reflected in folds and fabrics of low to moderate finite strain. (See Figure 1)

The rocks that were exposed on the property are assigned to the Ball assemblage. Figure 4 shows the location of the area stripped.

Physical Stripping, and channel sampling:

The location of stripping was based on reconnaissance sampling and prospecting by Redstar in July and August 2002. Several showings were identified containing pyrite, and chalcopyrite mineralization. The showings are summarized in table 1 below.

Showing Name	Gold g/t	Comments
Roadcut-1	Nil	Grab sample of a quartz vein with 2-3% chalcopyrite
Bottle Showing	1330 ppb Au / 0.20m	Chip sample of a chlorite-sulphide zone with 5% pyrite
"10" zone	10.15 g/t Au	Grab sample of a quartz vein with 1-2% chalcopyrite

RLM Showing	1.85 g/t Au / 1.0m	Chip sample across a mineralized (2-3% chalcopyrite and 5-10% pyrite) quartz vein
RLM Showing	2.95 g/t Au / 1.0m	Chip sample across mineralized wall rock (5-10% pyrite)

A stripping, washing and channel sampling program was completed to identify the strike length of quartz veins and gold mineralization in these showings.

Physical stripping, channel sampling and washing took place over a 9 day period, from August 18 to August 26. During this time, a two-person labor crew, 2-3 geologists and a backhoe and operator carried out manual and mechanical stripping, and chip-channel sampling. A total of 18 man-days of labour were needed to complete this program at a rate of \$175 per man per day. Labourers worked two at a time on the various showings. In addition, geological supervision was required for 24 man-days at a rate of \$300.00 per man per day. The geologist duties were to oversee and help with the stripping and sampling operations and describe samples and geology. During this time, one backhoe and operator was utilized at a rate of \$85 per hour for a total of 60.5 hours. Channel samples were collected by hammer and chisel. Considerable time was spent by both Geologists and Helpers cleaning and washing the showings. Water was not available close to the showings are consequently had to be hauled in jugs by ATV. In addition to stripping showings, a road was completed from the existing Forestry road (McIntosh Road) into the showings. Considerable time was spent stripping and sampling along new road cuts.

Analysis were carried out at Chemex Labs in Vancouver BC. All samples were submitted for standard fire assay gold and ICP. Selected samples (10) were submitted for metallic screen analysis.

The rocks exposed during this trenching program are assigned to the Ball assemblage volcanic package of rocks for each showing. The following table summarizes geology and results for each showing:

Showing Name	Number of samples	Date	Geology & Results
RoadCut	14	Aug 19	Felisc quartz crystal tuff, finely bedded to massive >10m beds. Abundant quartz veining with occasional blebby chalcopyrite mineralization. Chalcopyrite locally up to 3% with Malachite staining. Twelve samples were collected, no significant gold results are

			reported. See figure 5.
Bottle Showing	8	Aug20-21	Altered mafic volcanic rocks with local sections of strong chlorite and pyrite mineralization were exposed. Eight samples were collected for ICP and gold analysis. Three samples contain anomalous > 1000ppb gold. Sample 385958 (grab) assayed 710ppb Gold by standard fire assay and 1.05 g/t Gold by Metallic screen analysis. (See Figure 6).
10 Zone	11	Aug 22-23	Altered and foliated mafic and ultramafic volcanic rocks were exposed. Chip and grab samples contained anomalous gold values, with samples 387314 and 387312 assayed 1640 and 1925 ppb Gold respectively (See figure 7).
RLM showing	12	Aug 24-25	Altered and foliated Mafic and felsic Volcanic rocks were exposed. A wide (up to 1m) wide quartz vein was exposed along the north end of the outcrop. The quartz vein contains up to 15% pyrite and 2-3% chalcopyrite. The vein can be followed along strike for approximately 20 meters. Several anomalous samples were collected along the vein and in the wall rock. Of significance are samples 385965 and 385966 which assayed 1.85 g/t / 1.0m and 2.95 g/t / 1.0m. These samples were collected along a continuous 2-meter chip channel. (See figure 8)

Sample results:

Au-1 = Fire assay with gravimetric finish

Au-2 = Fire assay with AA finish

Au-3 = Metallic screen analysis (> 500g sample)

sample	ICP_certificate	Metallic certificate	Au 1	Au 2	Au 3	northing	easting	rocktype
385512	A0219461.CSV			<5		5656001	411415.3	Q Vein
385537	A0222433.CSV			15		5657203	409613	qvein
385538	A0222433.CSV			<5		5657156	409620	qvein
385539	A0222657.CSV			<5		5657070	409815	qvein
385540	A0222657.CSV			<5		5657077	409774	qtz
385541	A0222657.CSV			<5		5656866	409965	qvein
385542	A0222657.CSV			<5		5656880	409936	qtz

sample	ICP_certificate	Metallic_certificate	Au 1	Au 2	Au 3	northing	easting	rocktype
385543	A0223184.CSV		---	<5		5657094	409526	qvein
385544	A0223184.CSV		---	<5		5656861	409963	qvein
385574	A0223184.CSV	A0224315.CSV	---	1330	1.22	5656005	411429.9	Chl Sul Zone
385575	A0223184.CSV	A0224315.CSV	---	1820	2.05	5655533	412348.1	Cp-Py (Aspy) Q vein
385610	A0219700.CSV	A0220770.CSV	10.15	>10000	9.67	5655684	412256	Q Vein
385642	A0223184.CSV		---	10		5657153	409887	qvein
385675	A0220127.CSV	A0224315.CSV	---	1105	0.95	5656005	411426	g
385718	A0221274.CSV		---	15		5655685	412255.4	
385719	A0221274.CSV		---	5		5655687	412253.2	
385951	A0222433.CSV			<5		5657073	409685	Felsic Volc
385954	A0222433.CSV			<5		5657067	409486	sericite fuchsite schist
385955	A0222433.CSV			<5		5657067	409487	qvein
385958	A0223184.CSV	A0224315.CSV	---	710	1.05	5656009	411433.4	
385959	A0223184.CSV		---	15		5656003	411441.2	
385960	A0223184.CSV		---	15		5656005	411443.1	
385961	A0223184.CSV		---	5		5656004	411444.5	
385964	A0223184.CSV	A0224315.CSV	---	1335	1.16	5655533	412348.1	QV
385965	A0223184.CSV	A0224315.CSV	---	1860	1.85	5655535	412345.8	QV
385966	A0223184.CSV	A0224315.CSV	---	1405	2.95	5655535	412346.3	MV
385967	A0223184.CSV	A0224315.CSV	---	1170	1.33	5655542	412336.3	QV
385968	A0223184.CSV		---	420		5655542	412336.9	MV
387310	A0223184.CSV		---	5		5657107	409525	Qvein
387311	A0223184.CSV		---	<5		5657107	409525	FQP
387314	A0223184.CSV	A0224315.CSV	---	1640	1.62	5655691	412247.8	QV
387315	A0223184.CSV		---	5		5655684	412244.8	QV
387316	A0223184.CSV		---	<5		5655687	412241	QV
387317	A0223184.CSV		---	570		5655699	412254.1	QV
387318	A0223184.CSV		---	<5		5655697	412251.2	QV
387319	A0223184.CSV		---	725		5655695	412253.8	QV
387320	A0223184.CSV		---	<5		5655686	412243.3	
387321	A0223184.CSV		---	465		5655541	412337.4	QV
387322	A0223184.CSV		---	250		5655540	412338.4	MV
387323	A0223184.CSV		---	105		5655534	412347.2	QV
387324	A0223184.CSV		---	180		5655532	412349.1	QV
387326	A0223184.CSV		---	410		5655528	412354.9	QV
387327	A0223184.CSV		---	5		5655525	412333.4	QV

Conclusions and Recommendations:

Further work is planned on these showings, in particular the Bottle, RLM and 10 zone require additional stripping, power washing and sampling. Geological mapping and sample should be carried out on tightly spaced grid lines surrounding these showings.



Mechanical stripping on the 10 Zone.



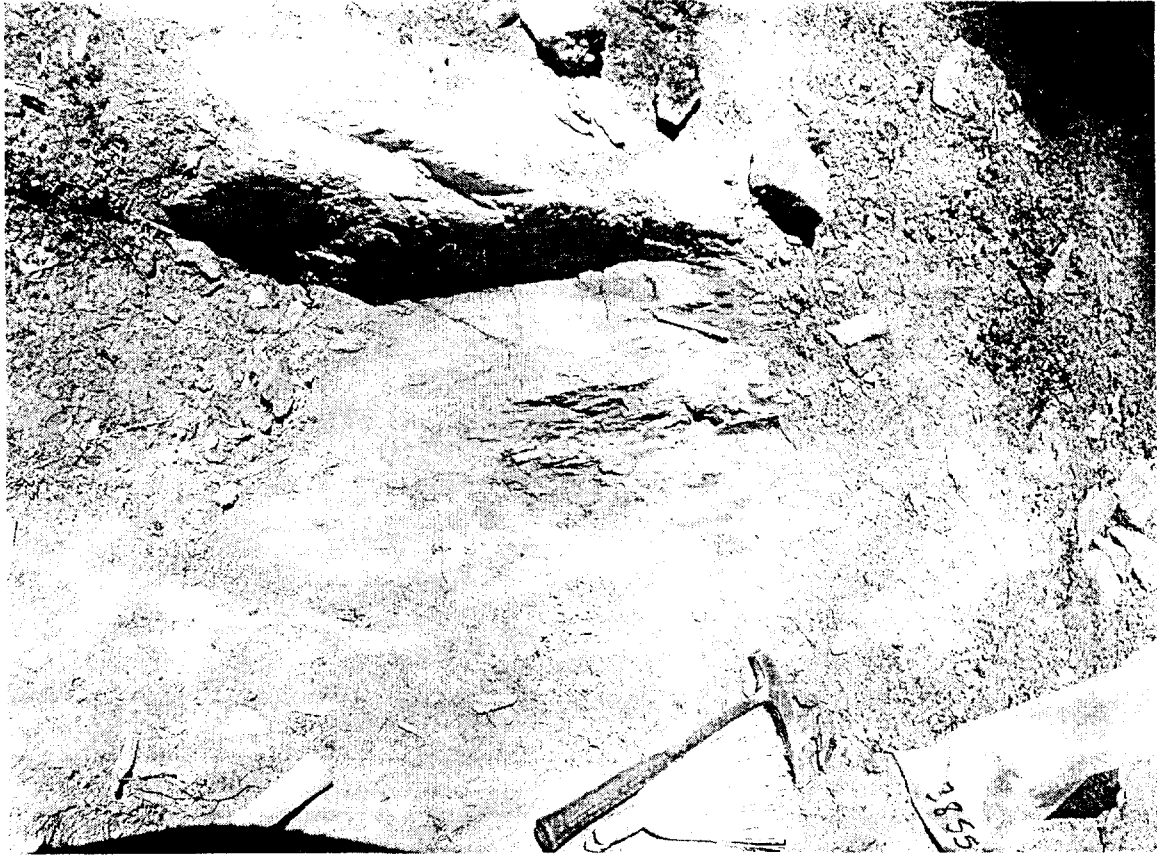
Mineralization at the 10 zone.



Folded Quartz veining at the 10 zone.



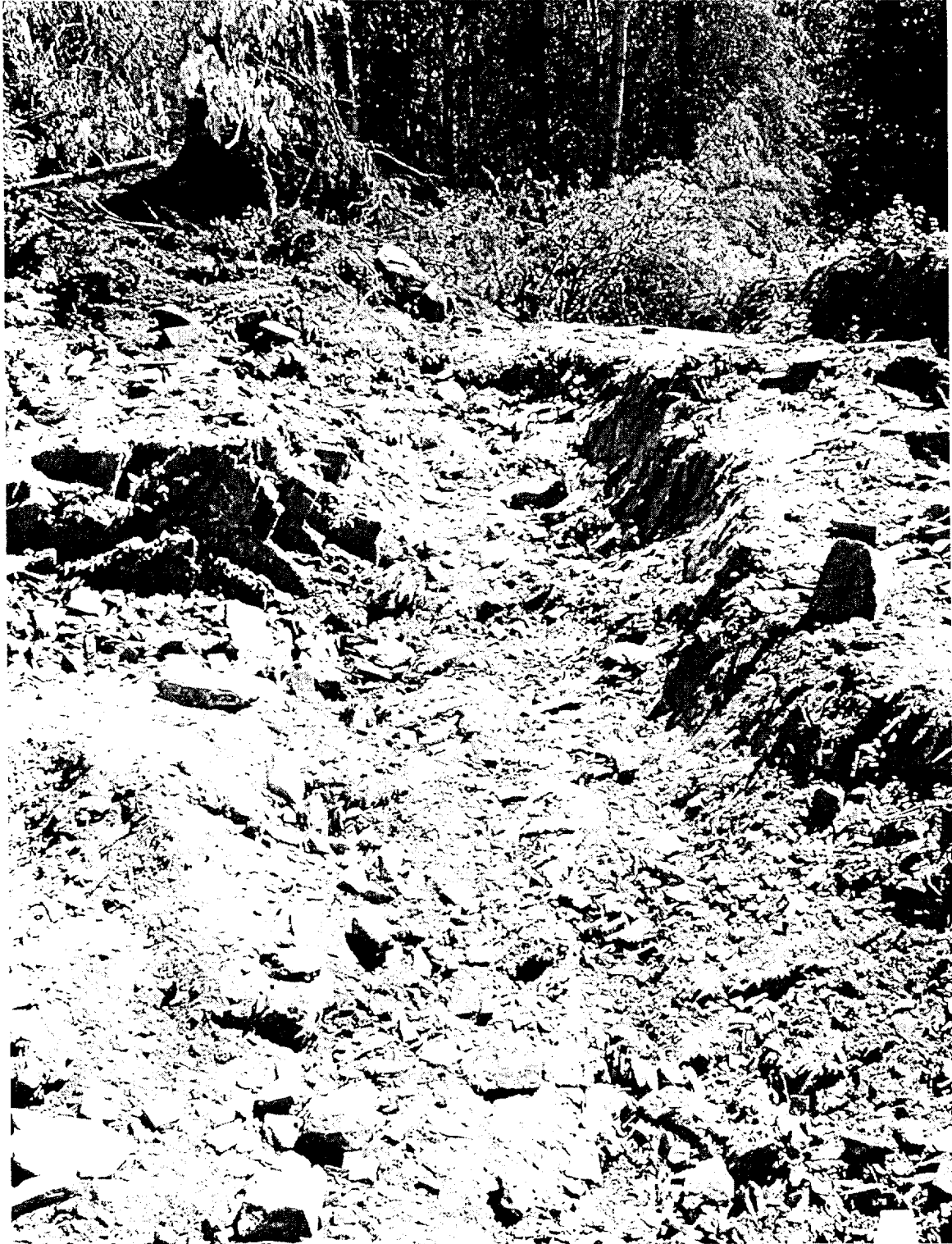
Stripped area at the Bottle Showing with Geologist Kevin Murphy.



Bottle Showing mineralization – Chlorite – pyrite zone.



Mechanical Stripping at the RLM showing



Trench at the RLM Showing before cleaning.



Cleaning and washing of quartz vein in RLM showing. Geologist Kevin Murphy
And samplers /prospectors Danny Rivard and Billy Desmuelles.



Stripped area at the Roadcut.

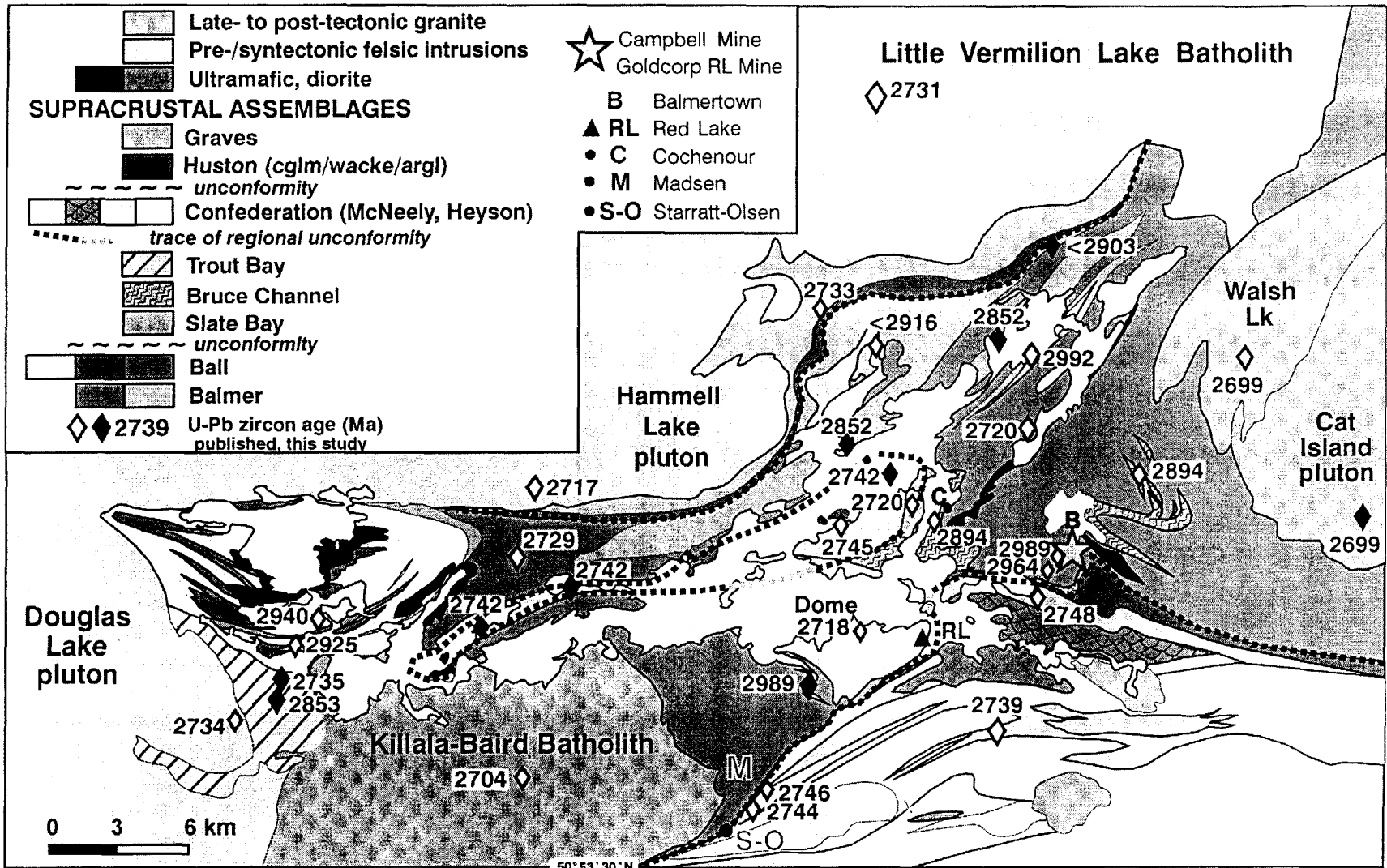


Figure 1. Geology of the Red Lake greenstone belt, showing critical age determinations of volcanic and plutonic rocks (M. Sanborn-Barrie and T. Skulski, GSC, western Superior NATMAP program 1997-2002)

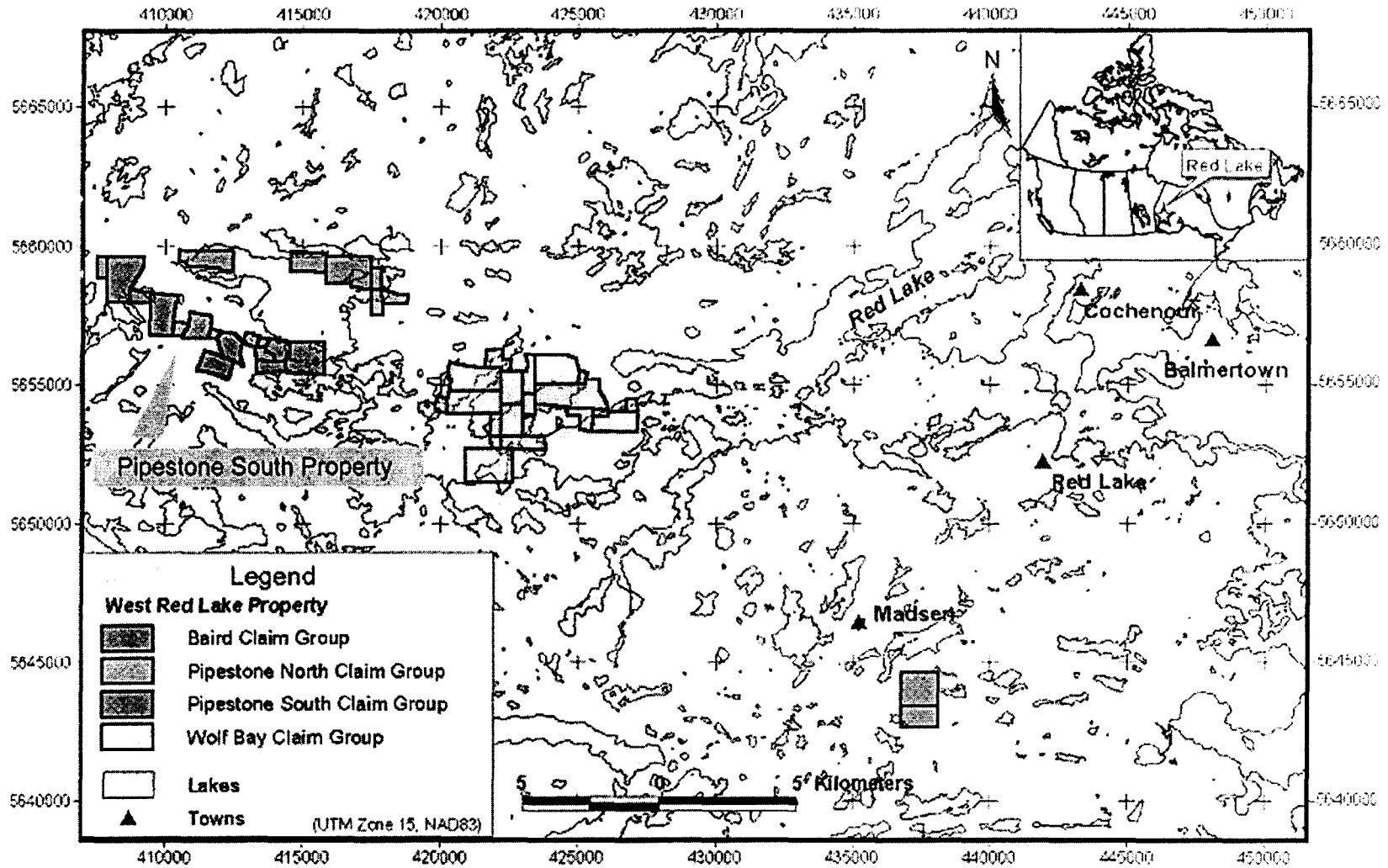


Figure 2. Property Location Map.

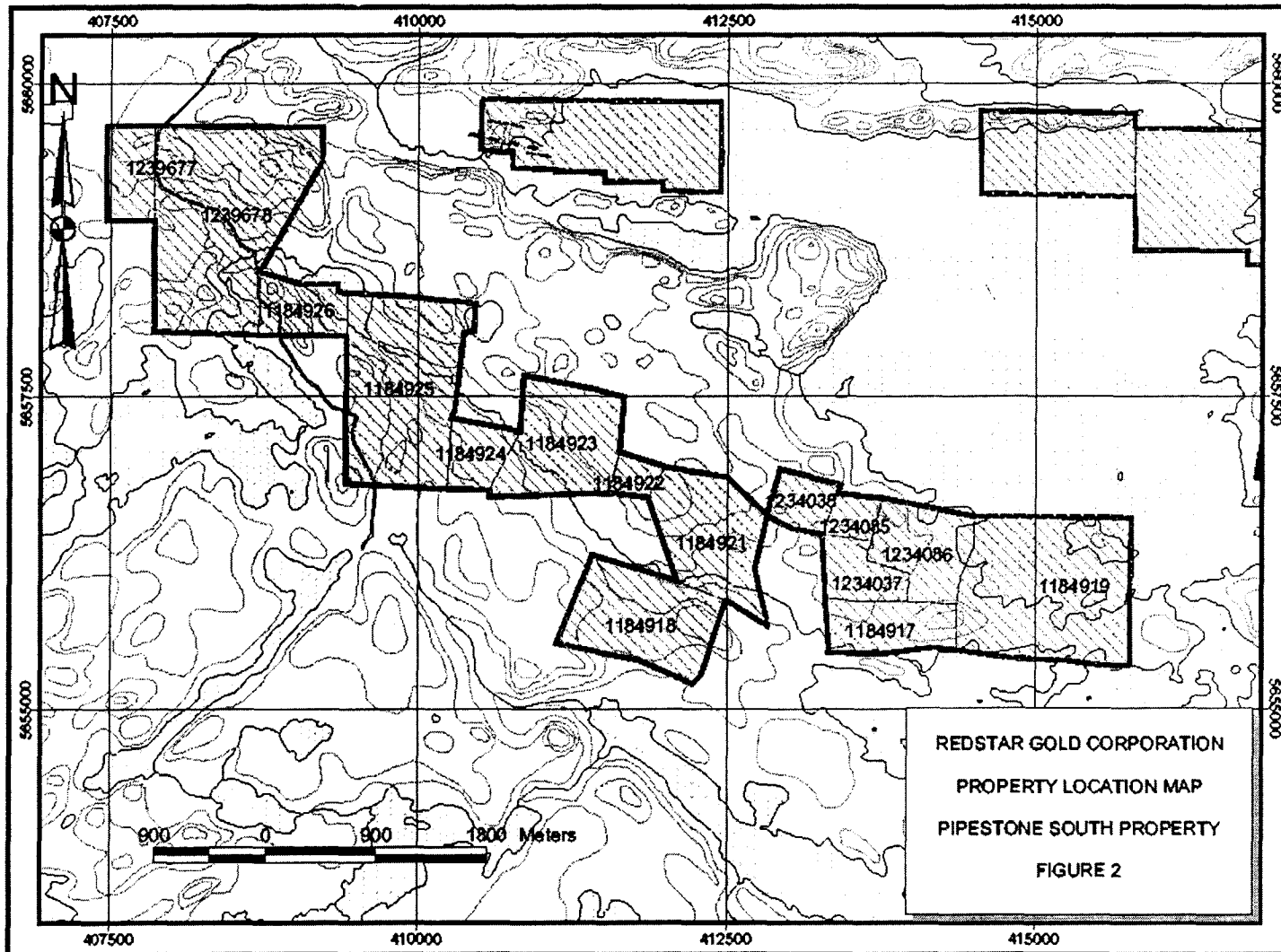


Figure 3. Claim Map.

Figure 4. Stripped areas (showings). (In pocket)

Figure 5. Roadcut (In pocket)

Figure 6. Bottle Showing (In pocket)

Figure 7. 10 Zone (In pocket)

Figure 8. RLM Showing (In Pocket)



ALS Chemex

Aurora Laboratory Services Ltd.
 Analytical Chemists * Geochemists * Registered Assayers
 212 Brooksbank Ave., North Vancouver
 British Columbia, Canada V7J 2C1
 PHONE: 604-984-0221 FAX: 604-984-0218

To: PAMICON DEVELOPMENTS LIMITED

###

611 - 675 W. HASTINGS ST.
 VANCOUVER, BC
 V6B 1N2

Page Number : 1-A
 Total Pages : 1
 Certificate Date: 11-JUL-2000
 Invoice No. : I0219461
 P.O. Number : WRL-S001
 Account : BM

Project : WRL
 Comments: ATTN: DOUG FULCHER EMAIL: BOB SINGH

CERTIFICATE OF ANALYSIS A0219461

SAMPLE	PREP CODE	Au ppb FA+AA	Ag ppm (ICP)	Al % (ICP)	As ppm (ICP)	Ba ppm (ICP)	Be ppm (ICP)	Bi ppm (ICP)	Ca % (ICP)	Cd ppm (ICP)	Co ppm (ICP)	Cr ppm (ICP)	Cu ppm (ICP)	Fe % (ICP)	K % (ICP)
385501	205 226	10	< 0.5	7.32	10	70	< 0.5	< 2	7.4	< 0.5	55	266	188	6.27	0.28
385502	205 226	720	40	1.21	20	10	< 0.5	4	0.27	4.0	50	279	>10000	4.10	0.06
385503	205 226	20	< 0.5	9.82	45	50	< 0.5	< 2	2.0	1.0	57	276	321	9.77	0.45
385504	205 226	< 5	< 0.5	0.11	10	< 10	< 0.5	2	0.15	< 0.5	5	223	87	5.00	0.01
385505	205 226	10	< 0.5	3.40	25	30	< 0.5	14	4.0	< 0.5	5	102	70	5.10	0.12
385506	205 226	10	< 0.5	7.26	5	60	< 0.5	< 2	6.6	0.5	45	155	335	7.64	0.59
385507	205 226	< 5	< 0.5	8.23	5	390	0.5	< 2	1.25	< 0.5	5	27	9	1.30	2.53
385508	205 226	40	< 0.5	6.12	< 5	30	< 0.5	14	4.7	< 0.5	42	407	48	6.54	0.16
385509	205 226	135	11.0	5.28	15	40	< 0.5	16	1.10	< 0.5	16	507	1255	11.46	0.45
385510	205 226	< 5	< 0.5	7.65	5	360	0.5	< 2	0.70	< 0.5	10	54	12	2.79	1.12
385511	205 226	< 5	< 0.5	1.97	< 5	130	< 0.5	< 2	0.13	< 0.5	1	114	12	0.59	0.59
385512	205 226	< 5	< 0.5	0.50	< 5	< 10	< 0.5	< 2	0.43	< 0.5	4	144	6	0.94	0.03
385513	205 226	< 5	< 0.5	0.57	< 5	110	0.5	< 2	0.58	< 0.5	7	29	55	1.79	0.05

CERTIFICATION: _____



ALS Chemex

Aurora Laboratory Services Ltd.
 Analytical Chemists * Geochemists * Registered Assayers
 212 Brooksbank Ave., North Vancouver
 British Columbia, Canada V7J 2C1
 PHONE: 604-984-0221 FAX: 604-984-0218

To: PAMICON DEVELOPMENTS LIMITED

##

611 - 675 W. HASTINGS ST.
 VANCOUVER, BC
 V6B 1N2

Page Number : 1-B
 Total Pages : 1
 Certificate Date: 11-JUL-2002
 Invoice No. : 10219461
 P.O. Number : WRL-S001
 Account : BM

Project : WRL
 Comments : ATTN: DOUG FULCHER EMAIL: BOB SINGH

CERTIFICATE OF ANALYSIS

A0219461

SAMPLE	PREP CODE	Mg % (ICP)	Mn ppm (ICP)	Mo ppm (ICP)	Na % (ICP)	Ni ppm (ICP)	P ppm (ICP)	Pb ppm (ICP)	S % (ICP)	Sb ppm (ICP)	Sr ppm (ICP)	Ti % (ICP)	V ppm (ICP)	W ppm (ICP)	Zn ppm (ICP)
385501	205 226	4.33	1230	5	2.02	84	190	6	< 0.01	< 5	228	0.30	244	< 10	54
385502	205 226	0.50	190	3	0.35	53	60	196	2.15	< 5	17	0.07	45	< 10	156
385503	205 226	4.36	1425	< 1	2.58	181	270	2	0.05	< 5	111	0.53	305	< 10	96
385504	205 226	0.04	100	1	0.02	22	70	< 2	0.01	< 5	3	0.01	40	< 10	8
385505	205 226	0.77	820	< 1	0.34	20	690	4	0.16	< 5	83	0.07	20	< 10	48
385506	205 226	3.93	1345	1	1.21	140	248	12	0.27	< 5	102	0.43	258	< 10	82
385507	205 226	0.97	225	< 1	2.05	24	320	12	0.08	< 5	70	0.13	24	< 10	22
385508	205 226	5.39	1170	< 1	2.15	122	140	< 2	0.01	< 5	65	0.26	202	< 10	64
385509	205 226	4.44	465	4	0.32	42	180	14	0.28	< 5	22	0.24	177	< 10	48
385510	205 226	1.19	195	1	3.45	17	270	108	< 0.01	5	74	0.13	24	< 10	30
385511	205 226	0.14	55	< 1	0.69	7	110	0	< 0.01	< 5	25	0.03	0	< 10	0
385512	205 226	0.68	165	< 1	0.11	20	60	8	< 0.01	< 5	9	0.01	18	< 10	14
385513	205 226	0.04	250	< 1	6.11	14	510	6	0.05	< 5	267	0.16	31	< 10	32

CERTIFICATION: _____



ALS Chemex

Aurora Laboratory Services Ltd.
 Analytical Chemists * Geochemists * Registered Assayers
 212 Brooksbank Ave., North Vancouver
 British Columbia, Canada V7J 2C1
 PHONE: 604-984-0221 FAX: 604-984-0218

To: PAMICON DEVELOPMENTS LIMITED

##

611 - 675 W. HASTINGS ST.
 VANCOUVER, BC
 V6B 1N2

Project: WRL-S007
 Comments: ATTN: DOUG FULCHER

Page Number : 1-A
 Total Pages : 1
 Certificate Date: 23-AUG-2002
 Invoice No. : 10222433
 P.O. Number :
 Account : BM

CERTIFICATE OF ANALYSIS A0222433

SAMPLE	PREP CODE	Au ppb FA+AA	Ag ppm (ICP)	Al % (ICP)	As ppm (ICP)	Ba ppm (ICP)	Be ppm (ICP)	Bi ppm (ICP)	Ca % (ICP)	Cd ppm (ICP)	Co ppm (ICP)	Cr ppm (ICP)	Cu ppm (ICP)	Fe % (ICP)	K % (ICP)
385537	205 226	15	< 0.5	4.47	< 5	130	0.5	6	0.55	< 0.5	4	275	46	1.26	0.76
385538	205 226	< 5	< 0.5	3.54	< 5	140	0.5	< 2	0.56	< 0.5	5	146	30	0.97	0.89
385540	205 226	015	7.0	0.10	15	< 10	< 0.5	276	0.25	< 0.5	14	296	2560	2.37	0.02
385773	205 226	15	< 0.5	7.95	< 5	20	< 0.5	< 2	12.5	1.0	22	136	74	4.82	0.03
385929	205 226	5	< 0.5	2.45	< 5	20	< 0.5	< 2	4.2	1.5	19	171	55	13.22	0.07
385930	205 226	< 5	< 0.5	5.70	< 5	20	< 0.5	< 2	4.5	1.0	41	181	111	7.31	0.10
385931	205 226	150	< 0.5	6.08	< 5	30	< 0.5	< 2	9.6	1.0	37	201	157	7.17	0.03
385932	205 226	5	< 0.5	4.71	< 5	10	< 0.5	4	4.2	0.5	21	133	116	8.24	0.04
385933	205 226	< 5	< 0.5	2.79	< 5	10	< 0.5	2	1.75	< 0.5	6	151	62	7.67	0.03
385934	205 226	165	2.5	1.34	15	10	< 0.5	< 2	0.56	0.5	21	222	4560	3.07	0.05
385935	205 226	5	< 0.5	7.45	< 5	20	< 0.5	< 2	6.5	1.5	48	172	262	8.80	0.09
385936	205 226	< 5	< 0.5	4.51	< 5	20	< 0.5	2	2.2	< 0.5	40	189	130	5.56	0.15
385937	205 226	< 5	< 0.5	7.17	< 5	340	< 0.5	< 2	6.2	1.5	50	148	205	8.48	0.09
385938	205 226	25	< 0.5	5.93	< 5	20	< 0.5	< 2	5.4	0.5	42	128	619	7.00	0.09
385939	205 226	15	< 0.5	5.85	< 5	20	< 0.5	< 2	3.8	0.5	47	155	318	6.94	0.10
385940	205 226	< 5	< 0.5	2.15	< 5	20	< 0.5	< 2	1.40	< 0.5	20	146	59	2.60	0.10
385941	205 226	5	< 0.5	6.89	5	60	< 0.5	< 2	3.8	0.5	45	153	177	8.52	0.25
385942	205 226	< 5	< 0.5	3.72	5	30	< 0.5	< 2	1.15	0.5	26	206	102	4.61	0.10
385951	205 226	< 5	< 0.5	8.01	< 5	340	0.5	< 2	1.20	< 0.5	3	43	6	1.24	2.34
385952	205 226	< 5	< 0.5	10.24	< 5	340	1.0	3	3.3	< 0.5	3	40	12	1.74	1.01
385953	205 226	< 5	< 0.5	4.53	< 5	160	< 0.5	6	1.00	< 0.5	3	123	6	1.13	0.89
385954	205 226	< 5	< 0.5	5.79	< 5	250	< 0.5	4	1.10	< 0.5	10	285	28	1.10	1.89
385955	205 226	< 5	< 0.5	0.77	< 5	10	< 0.5	2	0.56	< 0.5	8	267	13	0.96	0.11

CERTIFICATION: _____



ALS Chemex

Aurora Laboratory Services Ltd.
 Analytical Chemists * Geochemists * Registered Assayers
 212 Brooksbank Ave., North Vancouver
 British Columbia, Canada V7J 2C1
 PHONE: 604-984-0221 FAX: 604-984-0218

To: PAMICON DEVELOPMENTS LIMITED

##

611 - 675 W. HASTINGS ST.
 VANCOUVER, BC
 V6B 1N2

Page Number :1-B
 Total Pages :1
 Certificate Date: 23-AUG-2002
 Invoice No. : I0222433
 P.O. Number :
 Account : BM

Project : WRL-S007
 Comments : ATTN: DOUG FULCHER

CERTIFICATE OF ANALYSIS A0222433

SAMPLE	PREP CODE	Mg % (ICP)	Mn ppm (ICP)	Mo ppm (ICP)	Na % (ICP)	Ni ppm (ICP)	P ppm (ICP)	Pb ppm (ICP)	S % (ICP)	Sb ppm (ICP)	Sr ppm (ICP)	Ti % (ICP)	V ppm (ICP)	W ppm (ICP)	Zn ppm (ICP)
385537	205 226	0.22	125	3	2.26	15	150	2	0.09	< 5	120	0.09	17	< 10	10
385538	205 226	0.29	120	3	1.03	27	160	2	0.01	< 5	116	0.07	18	< 10	20
385539	205 226	0.10	390	3	0.03	27	< 10	26	0.04	< 5	4	< 0.01	6	< 10	18
385540	205 226	1.65	1045	2	0.12	61	80	< 2	0.02	< 5	56	0.19	138	< 10	30
385541	205 226	2.28	835	3	0.20	47	330	2	0.09	< 5	6	0.12	77	< 10	54
385542	205 226	3.42	1035	4	1.28	114	190	< 2	0.08	< 5	62	0.37	238	< 10	70
385543	205 226	2.70	1175	5	0.39	107	250	< 2	0.19	< 5	65	0.33	207	< 10	50
385544	205 226	3.17	810	4	0.25	50	290	< 2	0.57	< 5	44	0.15	97	< 10	46
385545	205 226	2.86	550	4	0.07	11	440	< 2	0.36	< 5	12	0.04	17	< 10	34
385546	205 226	0.84	245	2	0.15	40	60	< 2	0.49	< 5	6	0.09	52	< 10	74
385547	205 226	4.49	1515	5	1.49	138	210	4	0.08	< 5	94	0.46	287	< 10	84
385548	205 226	2.62	795	4	0.05	83	130	< 2	0.04	< 5	35	0.28	177	< 10	62
385549	205 226	4.45	1400	4	1.40	143	230	2	0.07	< 5	85	0.44	277	< 10	82
385550	205 226	3.54	1135	4	1.19	142	160	2	0.10	< 5	71	0.35	219	< 10	72
385551	205 226	3.71	1035	3	0.84	179	210	< 2	0.05	< 5	43	0.33	202	< 10	76
385940	205 226	1.28	405	3	0.26	55	70	< 2	< 0.01	< 5	17	0.10	64	< 10	28
385941	205 226	4.07	1095	3	0.88	133	240	2	0.10	< 5	56	0.43	268	< 10	78
385942	205 226	2.18	630	2	0.40	75	120	< 2	0.02	< 5	25	0.24	148	< 10	52
385951	205 226	0.60	190	1	2.54	8	270	4	< 0.01	< 5	159	0.12	20	< 10	22
385952	205 226	1.20	310	2	3.69	27	620	10	0.04	< 5	722	0.17	35	< 10	48
385953	205 226	0.48	200	< 1	1.21	10	210	4	0.03	< 5	295	0.00	23	< 10	20
385954	205 226	0.50	140	2	1.53	33	80	4	0.10	< 5	129	0.12	155	< 10	16
385955	205 226	0.43	145	2	0.20	23	150	< 2	0.08	< 5	23	0.04	18	< 10	10

CERTIFICATION: _____



ALS Chemex

Aurora Laboratory Services Ltd.
 Analytical Chemists * Geochemists * Registered Assayers
 212 Brooksbank Ave., North Vancouver
 British Columbia, Canada V7J 2C1
 PHONE: 604-984-0221 FAX: 604-984-0218

To: PAMICON DEVELOPMENTS LIMITED

##

611 - 675 W. HASTINGS ST.
 VANCOUVER, BC
 V6B 1N2

Page Number : 1-A
 Total Pages : 2
 Certificate Date : 28-AUG-2002
 Invoice No. : 10222657
 P.O. Number :
 Account : BM

Project : WRL-S008
 Comments : ATTN: DOUG FULCHER

CERTIFICATE OF ANALYSIS A0222657

SAMPLE	PREP CODE		Au ppb	Au checau ppb	Ag ppm (ICP)	Al % (ICP)	As ppm (ICP)	Ba ppm (ICP)	Be ppm (ICP)	Bi ppm (ICP)	Ca % (ICP)	Cd ppm (ICP)	Co ppm (ICP)	Cr ppm (ICP)	Cu ppm (ICP)	Fe % (ICP)	K % (ICP)	Mg % (ICP)	Mn ppm (ICP)	Mo ppm (ICP)	
	FA+AA	ppb	ppb	ppb	ppm	%	ppm	ppm	ppm	ppm	%	ppm	ppm	ppm	ppm	%	%	%	ppm	ppm	
385539	205	294	< 5	-----	< 0.5	1.22	< 5	50	< 0.5	< 2	0.14	< 0.5	2	216	16	0.82	0.40	0.20	85	1	
385540	205	226	< 5	-----	< 0.5	3.42	< 5	780	< 0.5	< 2	1.65	< 0.5	7	181	17	1.50	0.69	0.67	230	3	
385541	205	226	< 5	-----	< 0.5	1.40	< 5	240	< 0.5	< 2	0.46	< 0.5	3	183	10	0.80	0.50	0.30	145	1	
385542	205	226	< 5	-----	< 0.5	0.57	< 5	150	< 0.5	< 2	0.11	< 0.5	1	191	7	0.50	0.24	0.08	75	2	
385543	205	226	65	55	45	3.0	1.32	110	190	< 0.5	64	0.82	< 0.5	14	204	234	2.92	0.15	0.61	385	6
385940	205	226	< 5	-----	< 0.5	7.59	5	140	< 0.5	< 2	7.2	0.5	49	255	206	8.74	0.15	3.78	1500	6	
385944	205	226	< 5	-----	< 0.5	8.09	15	180	< 0.5	< 2	4.6	1.0	50	179	185	9.46	0.20	4.77	1455	5	
385945	205	226	5	-----	< 0.5	7.59	20	40	< 0.5	< 2	6.0	1.0	46	173	210	8.57	0.14	4.14	1440	6	
385946	205	226	5	-----	< 0.5	7.66	15	50	< 0.5	< 2	6.0	0.5	49	165	198	8.70	0.13	4.28	1465	5	
385947	205	226	5	-----	< 0.5	7.28	15	40	< 0.5	< 2	5.7	1.0	54	158	212	8.38	0.12	4.38	1440	6	
385948	205	226	< 5	-----	< 0.5	7.44	25	300	< 0.5	< 2	6.9	1.0	53	166	183	8.81	0.11	4.47	1535	5	
385949	205	226	< 5	-----	< 0.5	8.85	35	40	< 0.5	< 2	6.2	< 0.5	53	191	238	10.24	0.16	4.87	1675	5	
385950	205	226	10	-----	< 0.5	7.98	15	170	< 0.5	< 2	7.3	0.5	58	153	204	8.66	0.09	4.42	1500	4	
385956	205	226	< 5	-----	< 0.5	7.34	< 5	560	0.5	< 2	1.20	< 0.5	6	34	25	1.21	1.45	0.37	235	1	
385957	205	226	< 5	-----	< 0.5	2.48	< 5	230	< 0.5	< 2	0.80	< 0.5	5	147	6	0.81	0.42	0.39	155	1	
387051	205	226	45	-----	1.0	3.58	15	110	< 0.5	16	2.9	1.0	47	166	948	10.06	0.11	2.92	1360	5	
387052	205	226	10	-----	< 0.5	7.27	30	140	< 0.5	< 2	4.5	1.0	47	155	183	8.17	0.19	4.40	1360	4	
387053	205	294	5	-----	< 0.5	7.68	50	40	< 0.5	2	8.3	1.0	51	152	188	7.51	0.22	3.98	1365	6	
387054	205	226	< 5	-----	< 0.5	7.66	15	180	< 0.5	< 2	6.1	1.0	49	159	194	8.84	0.22	4.78	1435	4	
387055	205	226	10	-----	< 0.5	7.66	15	230	< 0.5	4	4.2	0.5	48	149	184	8.20	0.73	4.42	1460	5	
387056	205	294	15	-----	1.5	5.24	10	70	< 0.5	8	3.7	< 0.5	36	140	147	6.20	0.48	3.11	1095	4	
387057	205	226	15	-----	1.5	5.07	10	80	< 0.5	10	3.6	0.5	36	141	143	6.05	0.46	3.01	1065	4	
387058	205	226	5	-----	< 0.5	7.45	10	30	< 0.5	< 2	6.3	0.5	48	149	173	8.06	0.23	4.02	1255	4	
387059	205	226	< 5	-----	< 0.5	7.12	5	40	< 0.5	2	6.1	1.0	50	151	162	8.26	0.27	4.32	1360	4	
387060	205	226	< 5	-----	< 0.5	6.84	5	30	< 0.5	< 2	6.7	1.0	46	148	136	7.84	0.21	4.06	1190	5	
387061	205	226	< 5	-----	< 0.5	7.55	10	70	< 0.5	< 2	4.3	1.5	47	160	226	7.85	0.44	3.98	1350	4	
387062	205	226	10	-----	< 0.5	7.35	5	70	< 0.5	< 2	4.8	1.0	46	141	157	7.98	0.72	4.12	1325	4	
387063	205	226	< 5	-----	< 0.5	3.52	20	70	< 0.5	< 2	5.1	< 0.5	28	150	136	4.42	0.12	2.14	905	3	
387064	205	226	50	-----	0.5	7.24	25	90	< 0.5	< 2	5.8	0.5	47	157	682	8.42	0.24	4.17	1380	5	
387065	205	226	30	-----	< 0.5	7.45	< 5	140	< 0.5	< 2	5.1	1.0	48	145	189	8.24	1.58	4.25	2050	4	
387066	205	226	15	-----	< 0.5	7.46	65	290	< 0.5	2	5.8	2.0	50	148	211	8.40	0.49	4.83	1530	3	
387067	205	294	10	-----	< 0.5	7.41	70	70	< 0.5	< 2	5.8	2.0	52	150	212	8.37	0.48	4.81	1520	3	
387068	205	226	< 5	-----	< 0.5	7.31	75	80	< 0.5	< 2	6.7	1.5	53	146	199	8.27	0.14	4.91	1355	4	
387069	205	226	< 5	-----	< 0.5	7.45	50	190	< 0.5	< 2	6.8	1.0	51	151	201	8.53	0.10	4.95	1425	4	
387070	205	226	5	-----	< 0.5	6.68	5	140	< 0.5	< 2	6.6	1.5	45	137	185	7.84	0.60	3.91	1425	3	
387071	205	226	5	-----	< 0.5	7.41	50	40	< 0.5	< 2	6.3	1.5	47	152	176	8.33	0.16	4.28	1335	3	
387072	205	226	< 5	-----	< 0.5	6.99	165	20	< 0.5	< 2	7.6	2.0	43	148	162	7.62	0.09	3.60	1295	4	
387073	205	226	< 5	-----	< 0.5	7.19	55	30	< 0.5	6	5.4	1.5	48	153	191	8.45	0.14	4.31	1390	4	
387074	205	226	< 5	-----	< 0.5	7.18	75	10	< 0.5	< 2	8.5	1.0	48	156	215	8.27	0.12	3.96	1395	4	
387075	205	226	< 5	-----	< 0.5	7.11	30	30	< 0.5	< 2	6.8	1.5	49	145	192	8.02	0.42	4.63	1385	4	

CERTIFICATION: _____



ALS Chemex

Aurora Laboratory Services Ltd.
 Analytical Chemists * Geochemists * Registered Assayers
 212 Brooksbank Ave., North Vancouver
 British Columbia, Canada V7J 2C1
 PHONE: 604-984-0221 FAX: 604-984-0218

To: PAMICON DEVELOPMENTS LIMITED

##

611 - 675 W. HASTINGS ST.
 VANCOUVER, BC
 V6B 1N2

Page Number : 1-B
 Total Pages : 2
 Certificate Date: 28-AUG-2000
 Invoice No. : I0222657
 P.O. Number :
 Account : BM

Project : WRL-S008
 Comments : ATTN: DOUG FULCHER

CERTIFICATE OF ANALYSIS

A0222657

SAMPLE	PREP CODE		Na % (ICP)	Ni ppm (ICP)	P ppm (ICP)	Pb ppm (ICP)	S % (ICP)	Sb ppm (ICP)	Sr ppm (ICP)	Ti % (ICP)	V ppm (ICP)	W ppm (ICP)	Zn ppm (ICP)
	385539	205	294	0.36	6	70	2	0.07	< 5	19	0.02	12	< 10
385540	205	226	0.29	15	230	8	0.16	< 5	218	0.07	17	10	20
385541	205	226	0.09	11	90	< 2	0.01	< 5	21	0.03	11	< 10	8
385542	205	226	0.05	7	30	< 2	< 0.01	< 5	8	0.01	3	< 10	4
385573	205	226	0.27	21	50	16	1.23	< 5	28	0.07	53	560	20
385943	205	226	2.17	148	270	4	0.17	< 5	103	0.48	302	< 10	90
385944	205	226	1.74	150	290	8	0.08	< 5	96	0.51	302	< 10	94
385945	205	226	2.31	144	250	4	0.07	< 5	121	0.46	276	< 10	84
385946	205	226	2.00	146	260	6	0.06	< 5	111	0.47	275	< 10	84
385947	205	226	1.64	154	220	2	0.10	< 5	86	0.45	271	< 10	86
385948	205	226	1.53	148	270	8	0.05	< 5	96	0.48	280	< 10	86
385949	205	226	1.77	161	300	8	0.10	< 5	123	0.53	303	< 10	98
385950	205	226	1.64	146	260	6	0.12	< 5	112	0.47	274	< 10	84
385956	205	226	3.61	11	180	12	0.05	< 5	188	0.08	18	< 10	34
385957	205	226	0.68	39	120	2	0.01	< 5	40	0.05	14	< 10	12
387051	205	226	0.15	74	210	30	1.78	< 5	39	0.17	133	< 10	78
387052	205	226	1.13	170	250	2	0.13	< 5	71	0.42	254	< 10	82
387053	205	294	1.10	169	260	4	0.19	< 5	85	0.44	242	10	74
387054	205	226	1.86	141	260	8	0.12	< 5	98	0.48	288	10	92
387055	205	226	1.41	164	250	2	0.13	< 5	96	0.46	271	30	82
387056	205	294	0.94	121	180	16	0.12	< 5	61	0.32	191	10	62
387057	205	226	0.92	118	190	8	0.12	< 5	59	0.31	185	10	60
387058	205	226	1.39	130	240	8	0.09	< 5	92	0.43	254	< 10	76
387059	205	226	1.54	133	270	8	0.08	< 5	80	0.44	261	10	86
387060	205	226	1.14	134	260	6	0.10	< 5	89	0.43	251	10	82
387061	205	226	1.51	152	250	6	0.05	< 5	114	0.44	258	10	86
387062	205	226	1.28	155	240	6	0.09	< 5	83	0.43	256	10	90
387063	205	226	0.52	85	120	2	0.03	< 5	45	0.23	127	< 10	44
387064	205	226	2.13	152	240	8	0.11	< 5	123	0.45	266	10	88
387065	205	226	1.07	162	240	2	0.12	< 5	89	0.43	259	30	88
387066	205	226	1.21	201	250	2	0.08	< 5	93	0.44	261	10	86
387067	205	294	1.21	205	240	2	0.07	< 5	93	0.44	261	10	86
387068	205	226	1.27	208	230	2	0.06	< 5	107	0.43	253	10	80
387069	205	226	1.32	207	230	2	0.09	< 5	102	0.44	251	10	86
387070	205	226	1.22	131	250	6	0.24	< 5	89	0.41	242	10	84
387071	205	226	1.64	142	260	6	0.15	< 5	87	0.44	264	10	90
387072	205	226	0.98	129	250	4	0.07	< 5	83	0.42	253	10	78
387073	205	226	1.93	145	270	6	0.21	< 5	83	0.46	268	10	84
387074	205	226	1.08	144	260	6	0.13	< 5	74	0.46	263	10	82
387075	205	226	1.39	185	250	6	0.07	< 5	95	0.43	242	10	78

CERTIFICATION: _____



ALS Chemex

Aurora Laboratory Services Ltd.
 Analytical Chemists * Geochemists * Registered Assayers
 212 Brooksbank Ave., North Vancouver
 British Columbia, Canada V7J 2C1
 PHONE: 604-984-0221 FAX: 604-984-0218

To: PAMICON DEVELOPMENTS LIMITED

##

611 - 675 W. HASTINGS ST.
 VANCOUVER, BC
 V6B 1N2

Page Number :2-A
 Total Pages :2
 Certificate Date: 12-AUG-2002
 Invoice No. :I0221274
 P.O. Number :WRL-S004
 Account :BM

Project: WRL
 Comments: ATTN: DOUG FULCHER

CERTIFICATE OF ANALYSIS

A0221274

SAMPLE	PREP CODE	Au ppb FA+AA	Au FA g/t	Ag ppm (ICP)	Al % (ICP)	As ppm (ICP)	Ba ppm (ICP)	Be ppm (ICP)	Bi ppm (ICP)	Ca % (ICP)	Cd ppm (ICP)	Co ppm (ICP)	Cr ppm (ICP)	Cu ppm (ICP)	Fe % (ICP)	K % (ICP)	Mg % (ICP)	Mn ppm (ICP)	Mo ppm (ICP)	Na % (ICP)
385714	205 226	< 5	< 0.5	1.00	< 5	< 10	< 0.5	< 2	0.44	0.5	127	4560	6	0.86	0.01	>15.00	1250	< 1	0.01	
385715	205 226	< 5	< 0.5	7.00	< 5	180	< 0.5	< 2	0.07	< 0.5	4	44	5	2.79	2.43	0.50	510	< 1	0.19	
385716	205 226	< 5	< 0.5	0.20	< 5	20	< 0.5	< 2	0.07	< 0.5	6	199	4	1.23	0.03	0.14	1895	2	0.01	
385717	205 222	100	< 0.5	3.61	15	< 10	< 0.5	< 2	4.4	0.5	41	1105	37	5.10	0.04	5.74	1460	1	0.05	
385718	205 222	15	-----	< 0.5	7.23	< 5	10	< 0.5	2	2.6	2.0	45	210	186	9.93	0.11	4.37	825	< 1	1.67
385719	205 222	5	-----	< 0.5	3.27	< 5	30	< 0.5	6	9.3	2.5	19	108	122	8.95	0.13	6.28	9090	< 1	0.74
385720	205 224	< 5	< 0.5	6.56	< 5	70	2.0	< 2	0.73	< 0.5	3	33	33	0.32	0.41	0.10	95	< 1	1.21	
385721	205 226	< 5	-----	< 0.5	7.63	< 5	180	< 0.5	< 2	7.2	1.5	43	180	79	6.94	0.38	4.65	1415	1	2.05
385722	205 226	< 5	-----	< 0.5	6.66	< 5	50	< 0.5	< 2	6.1	2.0	15	126	161	9.04	0.49	4.50	2410	1	1.70
385723	205 226	< 5	-----	< 0.5	7.56	< 5	70	< 0.5	< 2	7.8	2.0	45	126	22	8.19	0.39	4.89	2450	< 1	1.43
385724	205 226	< 5	-----	< 0.5	7.12	< 5	40	< 0.5	< 2	8.8	2.5	43	120	208	8.26	0.22	5.65	3310	< 1	0.60
385725	205 226	< 5	-----	< 0.5	0.12	< 5	30	< 0.5	< 2	18.5	< 0.5	1	11	4	0.39	0.05	11.46	180	< 1	0.01
385726	205 226	45	-----	< 0.5	2.53	< 5	10	< 0.5	12	6.7	5.0	37	80	276	16.41	0.15	5.21	6750	1	0.21
385727	205 226	5	-----	< 0.5	0.17	< 5	< 10	< 0.5	16	18.5	2.0	5	10	20	4.21	< 0.01	9.75	5210	< 1	0.01
385728	205 226	< 5	-----	< 0.5	5.54	< 5	280	< 0.5	< 2	7.5	1.5	42	119	748	8.75	0.26	2.75	5020	18	0.32
385729	205 294	< 5	-----	0.5	0.06	< 5	10	< 0.5	< 2	4.6	1.5	9	108	119	8.67	< 0.01	2.34	3400	< 1	0.03
385730	205 226	< 5	-----	< 0.5	0.04	< 5	< 10	< 0.5	< 2	4.1	< 0.5	1	133	9	2.46	< 0.01	2.17	2740	< 1	0.01
385731	205 294	5	-----	< 0.5	0.25	< 5	< 10	< 0.5	6	8.4	1.5	13	90	91	9.94	< 0.01	4.24	6540	1	0.07
385732	205 222	25	-----	< 0.5	3.09	< 5	40	< 0.5	< 2	9.9	2.0	16	99	118	8.63	0.14	6.12	9710	< 1	0.65
385733	205 294	35	-----	1.0	7.04	< 5	320	< 0.5	8	4.5	1.0	39	151	579	7.36	1.03	4.38	1220	< 1	2.40
385734	205 226	< 5	-----	< 0.5	0.53	< 5	50	< 0.5	< 2	6.0	0.5	79	1300	14	4.91	< 0.01	>15.00	930	1	0.01
385735	205 226	< 5	-----	< 0.5	0.18	< 5	< 10	< 0.5	< 2	2.9	0.5	97	1235	3	4.69	< 0.01	>15.00	790	< 1	0.01
385736	205 222	< 5	-----	< 0.5	0.13	< 5	10	< 0.5	< 2	0.40	< 0.5	3	105	4	0.74	< 0.01	0.33	620	< 1	< 0.01
385737	205 226	< 5	-----	< 0.5	4.72	< 5	30	< 0.5	< 2	3.3	2.0	46	613	81	8.49	0.22	4.99	3080	< 1	0.26
385738	205 222	145	-----	< 0.5	5.16	< 5	110	0.5	< 2	0.59	0.5	6	115	41	3.95	1.29	0.83	1565	3	0.20
385739	205 222	5	-----	< 0.5	4.46	10	50	< 0.5	< 2	7.4	1.0	101	2850	35	6.95	0.41	6.68	1565	< 1	1.32
385740	205 222	5	-----	< 0.5	4.96	< 5	20	< 0.5	2	5.0	2.5	49	432	29	9.97	0.07	5.94	1555	1	0.36
385741	205 226	< 5	-----	< 0.5	5.34	< 5	60	< 0.5	2	9.1	1.0	45	446	42	6.04	0.15	4.87	1295	< 1	1.12
385742	205 226	10	-----	< 0.5	4.43	< 5	90	< 0.5	8	7.3	1.0	43	128	541	5.50	0.11	2.04	1755	< 1	0.78
385743	205 226	5	-----	< 0.5	7.41	15	10	< 0.5	2	10.0	2.0	48	124	289	6.50	0.22	2.70	1770	2	0.14
385744	205 226	< 5	-----	< 0.5	4.66	< 5	10	< 0.5	< 2	10.5	0.5	22	100	33	3.60	0.03	1.40	920	< 1	0.10

CERTIFICATION: _____



ALS Chemex

Aurora Laboratory Services Ltd.
 Analytical Chemists * Geochemists * Registered Assayers
 212 Brooksbank Ave., North Vancouver
 British Columbia, Canada V7J 2C1
 PHONE: 604-984-0221 FAX: 604-984-0218

To: PAMICON DEVELOPMENTS LIMITED

##

611 - 675 W. HASTINGS ST.
 VANCOUVER, BC
 V6B 1N2

Project : WRL
 Comments: ATTN: DOUG FULCHER

Page Number :2-B
 Total Pages :2
 Certificate Date: 12-AUG-2002
 Invoice No. : 10221274
 P.O. Number : WRL-S004
 Account : BM

CERTIFICATE OF ANALYSIS

A0221274

SAMPLE	PREP CODE	Ni ppm (ICP)	P ppm (ICP)	Pb ppm (ICP)	S % (ICP)	Sb ppm (ICP)	Sr ppm (ICP)	Ti % (ICP)	V ppm (ICP)	W ppm (ICP)	Zn ppm (ICP)
385714	205 226	1645	30	< 2	< 0.01	< 5	3	0.04	60	< 10	78
385715	205 226	22	330	130	0.03	< 5	48	0.16	23	< 10	48
385716	205 226	15	140	8	< 0.01	< 5	4	< 0.01	10	< 10	20
385717	205 222	242	50	8	0.15	< 5	24	0.00	132	< 10	96
385718	205 222	89	250	< 2	0.01	< 5	66	0.30	229	< 10	64
385719	205 222	51	260	2	0.62	5	50	0.13	88	< 10	50
385720	205 224	3	100	10	0.09	< 5	91	0.01	4	< 10	9
385721	205 226	100	180	< 2	0.07	< 5	196	0.23	244	< 10	74
385722	205 226	29	160	6	0.47	< 5	70	0.25	244	< 10	64
385723	205 226	104	120	< 2	0.01	5	74	0.25	242	< 10	68
385724	205 226	87	160	6	0.19	< 5	61	0.22	226	< 10	64
385725	205 226	3	320	2	0.01	< 5	42	< 0.01	6	< 10	10
385726	205 226	98	90	2	4.05	< 5	8	0.89	110	< 10	70
385727	205 226	14	30	< 2	0.12	< 5	36	< 0.01	14	< 10	14
385728	205 226	96	2500	14	1.52	5	56	0.26	180	< 10	68
385729	205 294	44	< 10	< 2	5.67	< 5	4	< 0.01	5	< 10	8
385730	205 226	5	40	< 2	0.24	< 5	4	< 0.01	3	< 10	8
385731	205 294	41	70	< 2	5.19	< 5	10	< 0.01	9	< 10	22
385732	205 222	46	310	4	0.58	5	58	0.13	76	< 10	48
385733	205 294	64	250	8	0.40	5	102	0.44	268	< 10	54
385734	205 226	1600	50	< 2	0.01	5	38	< 0.01	37	< 10	28
385735	205 226	2270	10	< 2	< 0.01	< 5	27	< 0.01	13	< 10	26
385751	205 222	18	40	4	< 0.01	< 5	7	< 0.01	6	< 10	8
385752	205 226	187	130	< 2	0.02	< 5	51	0.17	167	< 10	138
385753	205 222	29	310	18	0.27	< 5	41	0.12	21	< 10	94
385754	205 222	785	60	< 2	0.21	< 5	73	0.12	156	< 10	100
385755	205 222	143	200	< 2	0.05	< 5	51	0.20	152	< 10	122
385756	205 226	209	130	2	0.04	5	110	0.21	177	< 10	40
385757	205 226	87	260	< 2	0.14	< 5	61	0.21	107	< 10	96
385758	205 226	139	360	< 2	0.45	5	27	0.55	293	< 10	60
385759	205 226	59	130	< 2	0.14	< 5	18	0.20	121	< 10	26

CERTIFICATION: _____



ALS Chemex

Aurora Laboratory Services Ltd.
 Analytical Chemists * Geochemists * Registered Assayers
 212 Brooksbank Ave., North Vancouver
 British Columbia, Canada V7J 2C1
 PHONE: 604-984-0221 FAX: 604-984-0218

To: PAMICON DEVELOPMENTS LIMITED

##

611 - 675 W. HASTINGS ST.
 VANCOUVER, BC
 V6B 1N2

Page Number : 1-A
 Total Pages : 1
 Certificate Date: 24-JUL-2002
 Invoice No. : I0220127
 P.O. Number : WRL-S002
 Account : BM

Project : WRL
 Comments: ATTN: DOUG FULCHER

CERTIFICATE OF ANALYSIS

A0220127

SAMPLE	PREP CODE	Au ppbAu chec FA+AA ppb	Au FA Ag ppm g/t (ICP)	Al % As ppm (ICP)	Ba ppm (ICP)	Be ppm (ICP)	Bi ppm (ICP)	Ca % Cd ppm (ICP)	Co ppm (ICP)	Cr ppm (ICP)	Cu ppm (ICP)	Fe % (ICP)	K % (ICP)	Mg % (ICP)	Mn ppm (ICP)	Mo ppm (ICP)			
385554	205 226	15	< 0.5	0.50	< 5	10	< 0.5	< 2	0.54	< 0.5	4	205	505	0.62	0.02	0.09	150	1	
385556	205 226	20	< 0.5	1.51	< 5	10	< 0.5	< 2	2.5	< 0.5	11	211	551	1.70	0.02	0.61	375	2	
385558	205 226	5	< 0.5	8.26	15	30	< 0.5	< 2	10.0	8.0	55	211	219	6.76	0.08	4.92	1560	< 1	
385557	205 226	20	< 0.5	0.09	< 5	< 10	< 0.5	< 2	1.90	< 0.5	1	224	9	2.15	< 0.01	0.09	110	2	
385558	205 226	90	< 0.5	2.57	80	40	< 0.5	< 2	5.8	0.5	19	193	271	6.36	0.46	1.36	2550	2	
385559	205 226	155	< 0.5	4.26	105	90	< 0.5	< 2	1.80	1.0	25	212	242	9.58	0.93	1.95	2330	9	
385560	205 226	45	< 0.5	8.05	30	180	< 0.5	< 2	6.4	2.0	57	207	430	8.58	2.51	4.08	2610	5	
385616	205 226	10	< 0.5	7.40	< 5	500	0.5	< 2	1.00	< 0.5	6	50	158	2.01	2.67	0.87	180	8	
385617	205 226	< 5	< 0.5	2.21	< 5	< 5	< 0.5	< 2	0.31	< 0.5	4	161	16	0.99	0.48	0.39	80	2	
385618	205 226	< 5	< 0.5	0.52	< 5	10	< 0.5	< 2	0.17	< 0.5	8	215	7	1.10	0.06	0.62	80	1	
385619	205 226	5	< 0.5	3.22	< 5	50	< 0.5	< 2	1.45	< 0.5	94	2200	21	7.15	< 0.01	13.60	1315	< 1	
385620	205 226	55	< 0.5	9.40	5	170	< 0.5	< 2	0.37	< 0.5	5	36	18	1.77	0.96	0.97	125	1	
385621	205 226	5	< 0.5	4.85	5	40	< 0.5	< 2	5.7	2.0	59	755	17	9.62	0.81	7.49	940	< 1	
385670	205 226	< 5	< 0.5	8.02	< 5	550	1.0	< 2	1.10	< 0.5	4	44	16	1.28	2.62	0.41	150	< 1	
385671	205 226	< 5	< 0.5	1.82	< 5	190	< 0.5	< 2	0.32	< 0.5	1	194	12	0.60	0.87	0.27	105	< 1	
385672	205 226	10	< 0.5	9.66	5	760	1.0	< 2	0.96	< 0.5	6	48	194	2.00	2.74	0.56	75	1	
385673	205 226	< 5	< 0.5	9.21	< 5	140	0.5	< 2	3.0	< 0.5	24	73	129	4.95	0.54	2.16	655	< 1	
385674	205 226	< 5	< 0.5	0.16	< 5	20	< 0.5	< 2	2.1	< 0.5	1	20	4	0.40	0.07	12.75	185	< 1	
385675	205 226	1105	1230	15.0	5.70	10	50	< 0.5	< 2	5.9	2.5	62	2170	2360	10.79	0.16	7.13	1280	6
385676	205 226	230	315	0.5	7.11	15	90	< 0.5	< 2	3.7	< 0.5	4	50	25	1.92	3.05	1.44	760	1
385677	205 226	25	< 0.5	1.85	< 5	40	< 0.5	< 2	0.63	< 0.5	1	131	3	0.59	0.56	0.26	200	3	
385678	205 226	150	< 0.5	3.14	5	30	< 0.5	< 2	3.7	< 0.5	8	136	23	2.60	0.55	2.05	945	1	
385679	205 226	25	< 0.5	1.92	< 5	90	< 0.5	< 2	2.2	< 0.5	11	203	4	2.06	0.11	1.13	805	2	
385680	205 226	50	< 0.5	0.20	25	< 10	< 0.5	< 2	8.4	5.0	35	51	493	15.16	0.01	7.45	7640	7	
385681	205 226	< 5	< 0.5	0.03	< 5	< 10	< 0.5	< 2	9.2	< 0.5	1	164	11	2.40	0.01	4.56	3230	< 1	
385682	205 226	145	>100	9.18	>10000	150	< 0.5	< 2	6.3	10.0	45	314	287	8.06	2.19	2.27	3030	1	
385683	205 226	< 5	< 0.5	0.04	15	< 10	< 0.5	< 2	0.22	< 0.5	1	202	10	0.44	< 0.01	0.03	80	< 1	
385684	205 226	< 5	25	< 0.5	7.62	10	< 0.5	< 2	7.0	2.5	49	204	336	9.03	0.16	4.51	1335	< 1	
385701	205 226	340	360	< 0.5	7.42	5	150	< 0.5	< 2	0.43	< 0.5	4	78	27	4.14	2.95	0.64	1395	< 1
385702	205 226	>10000	>10000	27.95	4.0	0.64	5	< 0.5	2	5.5	1.5	5	182	13	2.29	0.09	2.79	1910	< 1
385703	205 226	40	50	< 0.5	7.86	845	110	< 0.5	4	8.4	22.0	46	237	132	5.53	2.25	2.37	2870	< 1



ALS Chemex

Aurora Laboratory Services Ltd.
 Analytical Chemists * Geochemists * Registered Assayers
 212 Brooksbank Ave., North Vancouver
 British Columbia, Canada V7J 2C1
 PHONE: 604-984-0221 FAX: 604-984-0218

To: PAMICON DEVELOPMENTS LIMITED

##

611 - 675 W. HASTINGS ST.
 VANCOUVER, BC
 V6B 1N2

Page Number :1-B
 Total Pages :1
 Certificate Date: 24-JUL-2002
 Invoice No. :10220127
 P.O. Number :WRL-S002
 Account :BM

Project : WRL
 Comments: ATTN: DOUG FULCHER

CERTIFICATE OF ANALYSIS

A0220127

SAMPLE	PREP CODE	Na % (ICP)	Ni ppm (ICP)	P ppm (ICP)	Pb ppm (ICP)	S % (ICP)	Sb ppm (ICP)	Sr ppm (ICP)	Ti % (ICP)	V ppm (ICP)	W ppm (ICP)	Zn ppm (ICP)
385554	205 226	0.19	16	10	< 2	0.05	< 5	12	0.01	0	< 10	0
385555	205 226	0.35	33	40	< 2	0.05	< 5	26	0.08	45	< 10	20
385556	205 226	1.22	131	300	10	0.03	< 5	129	0.35	310	< 10	88
385557	205 226	< 0.01	7	140	2	0.05	< 5	< 1	< 0.01	8	< 10	< 2
385558	205 226	0.13	41	100	6	2.64	< 5	42	0.14	111	10	42
385559	205 226	0.25	44	190	10	2.51	< 5	42	0.32	249	30	32
385560	205 226	0.42	153	300	20	0.70	< 5	139	0.48	317	40	62
385616	205 226	2.61	10	380	6	0.11	< 5	128	0.15	33	10	28
385617	205 226	0.91	10	150	2	< 0.01	< 5	24	0.04	15	< 10	6
385618	205 226	0.01	62	< 10	< 0	0.01	< 5	5	< 0.01	7	< 10	14
385619	205 226	0.01	977	130	4	0.02	< 5	48	0.13	122	< 10	62
385620	205 226	6.08	11	610	8	0.18	< 5	189	0.12	25	< 10	22
385621	205 226	0.24	185	150	6	0.05	5	60	0.21	215	< 10	44
385670	205 226	3.03	7	280	8	0.03	< 5	114	0.11	19	< 10	26
385671	205 226	0.20	4	110	< 2	0.01	< 5	32	0.04	6	< 10	2
385672	205 226	2.67	3	420	8	0.22	< 5	268	0.17	26	< 10	16
385673	205 226	4.76	17	1160	12	0.49	< 5	380	0.35	134	< 10	58
385674	205 226	0.02	1	320	< 2	< 0.01	< 5	51	< 0.01	6	< 10	10
385675	205 226	0.60	222	230	8	0.32	< 5	169	0.22	209	< 10	126
385676	205 226	0.67	12	360	10	0.50	< 5	69	0.05	25	< 10	12
385677	205 226	0.21	6	70	< 2	0.01	< 5	16	0.01	12	550	8
385678	205 226	0.30	18	180	4	0.02	< 5	61	0.02	11	< 10	30
385679	205 226	0.72	43	430	2	0.14	< 5	48	0.01	35	< 10	30
385680	205 226	0.03	144	70	12	0.85	< 5	13	< 0.01	< 1	30	40
385681	205 226	< 0.01	7	< 10	4	0.04	< 5	127	< 0.01	7	120	50
385682	205 226	0.42	149	220	3526	1.70	140	55	0.47	317	< 10	1250
385683	205 226	< 0.01	0	140	6	0.01	< 5	< 1	< 0.01	3	< 10	< 2
385684	205 226	1.40	117	300	8	0.19	< 5	61	0.45	291	< 10	84
385701	205 226	0.26	8	340	10	0.39	< 5	38	0.14	19	< 10	12
385702	205 226	0.03	33	80	194	0.02	< 5	35	< 0.01	11	< 10	60
385703	205 226	0.41	121	220	1880	0.41	50	46	0.40	260	< 10	2200

CERTIFICATION: _____



ALS Chemex

Aurora Laboratory Services Ltd.

Analytical Chemists * Geochemists * Registered Assayers

212 Brooksbank Ave., North Vancouver

British Columbia, Canada V7J 2C1

PHONE: 604-984-0221 FAX: 604-984-0218

To: PAMICON DEVELOPMENTS LIMITED

##

611 - 675 W. HASTINGS ST.

VANCOUVER, BC

V6B 1N2

Project: WRL

Comments: ATTN: DOUG FULCHER

Page Number :1-B

Total Pages :1

Certificate Date: 22-JUL-2002

Invoice No. :I0219700

P.O. Number :WRL-S002

Account :BM

CERTIFICATE OF ANALYSIS

A0219700

SAMPLE	PREP CODE	Ni ppm (ICP)	P ppm (ICP)	Pb ppm (ICP)	S % (ICP)	Sb ppm (ICP)	Sr ppm (ICP)	Ti % (ICP)	V ppm (ICP)	W ppm (ICP)	Zn ppm (ICP)
385514	205 294	22	670	30	1.23	5	270	0.27	67	< 10	54
385515	205 226	8	170	8	0.09	< 5	15	0.05	12	< 10	4
385516	205 294	120	200	< 2	0.01	5	150	0.25	191	< 10	86
385517	205 226	1795	90	2	0.07	< 5	14	0.07	78	< 10	62
385518	205 226	530	130	< 2	< 0.01	15	25	0.16	179	< 10	70
385519	205 226	31	500	12	0.06	< 5	344	0.18	31	< 10	52
385520	205 226	-----	-----	-----	-----	-----	-----	-----	-----	-----	-----
385521	205 226	144	80	206	0.51	5	28	0.04	42	< 10	672
385522	205 226	162	100	400	7.11	5	14	0.06	50	< 10	1035
385523	205 226	1065	110	12	0.35	15	37	0.11	109	< 10	136
385607	205 226	184	70	2	0.04	< 5	43	0.25	202	< 10	92
385608	205 226	133	210	2	< 0.01	5	115	0.27	209	< 10	52
385609	205 226	200	220	6	0.03	< 5	27	0.06	33	< 10	32
385610	205 226	50	320	56	0.73	< 5	31	0.16	128	10	40
385611	205 226	956	120	< 2	0.01	5	30	0.12	107	< 10	60
385612	205 226	41	90	32	0.16	< 5	5	0.10	43	< 10	64
385613	205 226	175	300	6	0.76	10	124	0.55	321	60	132
385614	205 226	70	170	10	7.76	125	29	0.26	157	10	134
385615	205 226	11	70	2	0.48	< 5	6	0.01	25	< 10	16
385631	205 226	206	170	230	3.12	< 5	32	0.11	111	< 10	1505
385632	205 226	124	230	< 2	0.05	10	137	0.32	264	< 10	78
385633	205 294	18	180	18	0.13	< 5	33	0.05	23	< 10	40
385634	205 226	6	290	2	0.19	< 5	79	0.13	20	< 10	18
385635	205 226	105	150	10	0.05	10	93	0.28	216	10	52
385636	205 226	194	700	< 2	< 0.01	< 5	365	0.55	203	< 10	104
385637	205 226	85	300	< 2	0.01	< 5	55	0.40	272	10	76
385638	205 226	124	200	< 2	< 0.01	5	11	0.35	248	< 10	76
385639	205 226	128	340	6	0.05	5	84	0.33	210	10	110
385660	205 226	1145	150	< 2	< 0.01	10	27	0.16	139	< 10	134
385661	205 226	513	270	4	0.01	< 5	36	0.41	341	< 10	44
385662	205 226	11	150	< 2	0.42	< 5	15	< 0.01	13	< 10	12
385663	205 226	11	10	6	< 0.01	< 5	3	< 0.01	30	< 10	8
385664	205 226	126	320	66	1.08	< 5	85	0.39	243	10	156
385665	205 226	62	180	< 2	< 0.01	5	20	0.20	135	< 10	42
385666	205 294	28	80	32	0.35	< 5	12	0.08	53	< 10	70
385667	205 226	92	190	< 2	0.97	15	65	0.29	196	< 10	72
385668	205 294	49	40	574	3.66	< 5	3	0.01	21	< 10	100
385669	205 226	9	10	16	0.05	< 5	5	0.01	20	< 10	14

CERTIFICATION: _____



ALS Chemex

Aurora Laboratory Services Ltd.

Analytical Chemists * Geochemists * Registered Assayers

212 Brooksbank Ave., North Vancouver
British Columbia, Canada V7J 2C1
PHONE: 604-984-0221 FAX: 604-984-0218

To: PAMICON DEVELOPMENTS LIMITED

##

611 - 675 W. HASTINGS ST.
VANCOUVER, BC
V6B 1N2

Project: WRL
Comments: ATTN: DOUG FULCHER

Page Number : 1-A
Total Pages : 1
Certificate Date: 22-JUL-2002
Invoice No. : I0219700
P.O. Number : WRL-S002
Account : BM

CERTIFICATE OF ANALYSIS A0219700

SAMPLE	PREP CODE	Au ppb	Au FA	Ag ppm	Al %	As ppm	Ba ppm	Be ppm	Bi ppm	Ca %	Cd ppm	Co ppm	Cr ppm	Cu ppm	Fe %	K %	Mg %	Mn ppm	Mo ppm	Na %
		FA+AA	g/t	(ICP)	(ICP)	(ICP)	(ICP)	(ICP)	(ICP)	(ICP)	(ICP)	(ICP)	(ICP)	(ICP)	(ICP)	(ICP)	(ICP)	(ICP)	(ICP)	(ICP)
385514	205 294	70	-----	0.5	7.65	10	280	0.5	< 2	2.2	< 0.5	26	103	2510	4.83	1.68	1.40	310	33	1.73
385515	205 226	580	-----	0.5	2.42	< 5	250	< 0.5	< 2	0.07	< 0.5	1	235	251	1.77	1.16	0.13	80	3	0.19
385516	205 294	< 5	-----	< 0.5	6.02	5	180	< 0.5	< 2	5.7	1.5	47	490	60	6.56	0.52	4.35	1135	< 1	1.32
385517	205 226	< 5	-----	< 0.5	1.42	5	70	< 0.5	< 2	1.15	0.5	122	1800	19	6.40	0.01	>15.00	1215	< 1	0.01
385518	205 226	< 5	-----	< 0.5	4.91	< 5	60	< 0.5	< 2	5.1	2.0	68	1060	33	6.78	0.47	10.08	1330	< 1	0.59
385519	205 226	< 5	-----	< 0.5	9.05	5	300	1.0	< 2	1.80	< 0.5	8	62	21	2.13	1.39	1.01	235	< 1	3.70
385520	205 226	< 5	-----	-----	-----	-----	-----	-----	-----	-----	-----	-----	-----	-----	-----	-----	-----	-----	-----	-----
385521	205 226	285	-----	12.5	1.17	5	10	< 0.5	< 2	4.0	4.0	25	589	2640	3.62	0.05	2.34	1250	< 1	0.19
385522	205 226	965	-----	80	1.33	110	30	< 0.5	178	1.75	7.0	225	437	>10000	12.26	0.08	1.49	920	< 1	0.27
385523	205 226	110	-----	2.0	2.58	10	10	< 0.5	< 2	2.9	1.0	95	1885	505	6.75	< 0.01	13.38	1100	< 1	0.01
385607	205 226	15	-----	< 0.5	5.30	5	30	< 0.5	< 2	6.2	3.0	59	667	180	7.20	0.05	6.93	1500	< 1	1.96
385608	205 226	< 5	-----	< 0.5	6.48	< 5	40	< 0.5	< 2	5.9	1.5	45	431	56	5.80	0.19	5.10	1245	< 1	2.41
385609	205 226	< 5	-----	< 0.5	2.84	< 5	280	< 0.5	< 2	0.99	< 0.5	20	552	56	3.03	1.07	3.21	305	1	0.21
385610	205 226	>10000	10.15	28	2.95	5	50	< 0.5	10	0.44	1.5	71	318	3840	10.21	0.28	2.13	360	< 1	0.30
385611	205 226	15	-----	< 0.5	2.95	5	40	< 0.5	< 2	2.0	1.5	98	1705	43	8.77	0.08	11.84	1235	< 1	0.18
385612	205 226	95	-----	2.0	1.00	< 5	10	< 0.5	< 2	0.13	0.5	11	343	1415	2.32	0.07	0.68	235	2	0.06
385613	205 226	30	-----	< 0.5	9.01	50	210	< 0.5	< 2	8.4	2.5	62	219	329	8.91	2.32	4.10	2150	1	0.38
385614	205 226	4210	-----	0.5	3.56	>10000	50	< 0.5	< 2	0.74	11.0	46	191	467	16.07	0.36	1.69	1645	< 1	0.13
385615	205 226	40	-----	< 0.5	0.45	635	< 10	< 0.5	< 2	1.20	< 0.5	5	213	66	1.76	0.05	0.26	635	7	0.01
385651	205 226	430	-----	42	3.13	55	50	< 0.5	< 2	1.85	9.0	79	710	>10000	8.10	0.14	2.15	795	< 1	0.84
385652	205 226	5	-----	< 0.5	7.04	10	50	< 0.5	2	6.0	2.0	56	520	141	8.55	0.10	5.58	1425	< 1	2.46
385653	205 294	145	-----	4.0	3.95	15	260	0.5	< 2	0.25	0.5	7	114	920	1.18	0.74	0.27	125	< 1	1.92
385654	205 226	15	-----	< 0.5	7.88	10	590	0.5	10	0.68	< 0.5	4	42	32	1.24	1.96	0.35	165	< 1	3.60
385655	205 226	15	-----	< 0.5	6.06	20	40	< 0.5	< 2	5.2	2.0	62	453	285	8.33	0.23	5.43	1310	< 1	1.83
385656	205 226	< 5	-----	< 0.5	6.33	20	270	< 0.5	< 2	6.6	1.5	51	1025	23	6.84	0.92	7.07	1325	< 1	1.61
385657	205 226	< 5	-----	< 0.5	7.97	15	140	< 0.5	< 2	2.7	2.0	52	95	64	9.32	0.73	3.70	1735	< 1	2.08
385658	205 226	< 5	-----	< 0.5	7.00	10	20	< 0.5	< 2	0.49	2.0	58	114	15	10.20	0.09	6.22	695	1	0.19
385659	205 226	10	-----	< 0.5	7.60	15	30	< 0.5	< 2	3.9	2.5	49	256	102	7.38	0.13	4.73	1185	< 1	2.81
385660	205 226	< 5	-----	< 0.5	3.56	15	10	< 0.5	12	4.1	2.0	93	1850	10	7.25	< 0.01	13.18	1615	< 1	0.10
385661	205 226	< 5	-----	< 0.5	9.10	5	40	< 0.5	< 2	1.25	< 0.5	77	493	72	2.45	0.23	2.07	500	3	7.20
385662	205 226	< 5	-----	< 0.5	0.61	45	< 10	< 0.5	< 2	4.6	< 0.5	4	104	35	1.61	0.02	0.14	325	< 1	0.10
385663	205 226	< 5	-----	< 0.5	0.40	5	< 10	< 0.5	< 2	0.07	< 0.5	3	169	12	0.94	0.01	0.29	105	< 1	0.03
385664	205 226	55	-----	5.0	7.16	5	30	< 0.5	< 2	6.4	3.5	50	320	5320	8.68	0.16	3.28	1230	3	0.96
385665	205 226	< 5	-----	< 0.5	3.71	15	20	< 0.5	< 2	0.28	< 0.5	23	281	59	3.83	0.07	1.77	855	1	1.30
385666	205 294	85	-----	7.0	1.17	15	10	< 0.5	60	0.73	2.0	14	230	1685	2.08	0.11	0.62	290	1	0.11
385667	205 226	< 5	-----	< 0.5	4.75	15	20	< 0.5	< 2	6.4	1.0	40	242	332	5.94	0.30	2.49	1145	2	0.78
385668	205 294	1270	-----	>100	0.46	20	< 10	< 0.5	1105	0.54	3.5	49	322	>10000	4.84	0.07	0.28	125	< 1	0.03
385669	205 226	315	-----	2.0	0.42	5	< 10	< 0.5	36	0.64	< 0.5	3	185	74	0.73	0.04	0.21	175	1	0.10

CERTIFICATION: _____



ALS Chemex

Aurora Laboratory Services Ltd.
 Analytical Chemists * Geochemists * Registered Assayers
 212 Brooksbank Ave., North Vancouver
 British Columbia, Canada V7J 2C1
 PHONE: 604-984-0221 FAX: 604-984-0218

To: PAMICON DEVELOPMENTS LIMITED

##

611 - 675 W. HASTINGS ST.
 VANCOUVER, BC
 V6B 1N2

Page Number :1-A
 Total Pages :2
 Certificate Date: 06-SEP-2002
 Invoice No. :10223184
 P.O. Number :WRL-S009
 Account :BM

Project : WRL-S009
 Comments : ATTN: DOUG FULCHER

CERTIFICATE OF ANALYSIS

A0223184

SAMPLE	PREP CODE	Au ppb FA+AA	Au chec ppb	Au FA g/t	Au g/t Check	Ag ppm (ICP)	Al % (ICP)	As ppm (ICP)	Ba ppm (ICP)	Be ppm (ICP)	Bi ppm (ICP)	Ca % (ICP)	Cd ppm (ICP)	Co ppm (ICP)	Cr ppm (ICP)	Cu ppm (ICP)	Fe % (ICP)	K % (ICP)	Mg % (ICP)	Mn ppm (ICP)
385543	205 294	< 5	----	----	----	< 0.5	3.60	< 5	420	0.5	< 2	1.30	< 0.5	10	106	85	2.35	0.82	0.82	285
385544	205 226	< 5	----	----	----	< 0.5	0.89	< 5	40	< 0.5	< 2	0.20	< 0.5	1	191	6	0.51	0.30	0.15	100
385546	205 222	< 5	----	----	----	< 0.5	5.56	< 5	130	0.5	< 2	0.08	< 0.5	6	69	6	1.62	1.50	0.63	85
385574	205 222	1330	----	----	----	19.5	3.54	< 5	80	< 0.5	6	1.80	0.5	97	1980	4530	12.83	0.30	4.37	785
385575	205 226	1820	----	----	----	>100	2.64	90	10	< 0.5	96	0.34	13.0	406	466	>10000	15.04	0.09	1.23	375
385576	205 226	50	----	----	----	1.0	5.56	< 5	260	0.5	< 2	0.93	< 0.5	5	34	228	1.02	2.13	0.39	109
385577	205 226	5	----	----	----	0.5	7.53	< 5	600	0.5	< 2	1.05	< 0.5	8	51	133	2.48	2.08	0.77	185
385578	205 222	95	----	----	----	5.5	3.69	70	90	< 0.5	2	6.8	0.5	47	1585	1070	6.05	0.54	5.01	2070
385579	205 226	40	----	----	----	< 0.5	0.31	5	10	< 0.5	< 2	0.30	< 0.5	5	159	40	0.62	0.05	0.20	185
385580	205 222	170	----	----	----	1.0	1.46	15	660	< 0.5	< 2	0.09	< 0.5	8	182	51	1.59	0.27	0.09	280
385581	205 226	90	----	----	----	0.5	4.93	20	210	< 0.5	< 2	0.65	< 0.5	29	136	102	5.27	1.20	1.45	640
385582	205 226	125	----	----	----	2.0	7.05	20	180	< 0.5	< 2	1.05	1.5	62	87	565	9.18	1.04	2.97	990
385583	205 226	1535	----	----	----	7.0	1.44	15	100	< 0.5	4	0.47	< 0.5	11	194	46	2.07	0.36	0.52	350
385584	205 226	15	----	----	----	< 0.5	2.31	65	40	< 0.5	2	9.8	1.0	21	1460	31	5.10	0.25	6.02	3020
385585	205 222	15	----	----	----	< 0.5	1.50	15	50	< 0.5	< 2	0.64	< 0.5	13	508	8	1.82	0.16	1.31	350
385586	205 226	1015	----	----	----	6.5	1.55	< 5	20	< 0.5	2	0.22	< 0.5	4	221	862	1.12	0.14	0.13	115
385587	205 226	>10000	----	18.15	----	19.0	0.45	< 5	150	< 0.5	< 2	0.05	< 0.5	6	208	2460	0.75	0.05	0.11	75
385588	205 226	405	----	----	----	17.5	8.39	< 5	70	0.5	< 2	0.91	< 0.5	9	73	690	2.42	0.79	0.52	170
385589	205 226	>10000	----	16.10	----	13.5	0.57	< 5	10	< 0.5	4	0.07	< 0.5	1	202	893	1.06	0.08	0.05	45
385590	205 226	255	----	----	----	13.5	8.42	< 5	90	0.5	< 2	1.10	< 0.5	10	54	963	2.85	1.24	0.64	210
385591	205 226	>10000	0.12	9.070	----	6.0	1.08	< 5	50	< 0.5	< 2	0.39	0.5	7	122	2100	0.93	0.45	0.27	60
385642	205 226	10	----	----	----	< 0.5	0.95	< 5	40	< 0.5	< 2	0.19	< 0.5	2	181	68	0.52	0.26	0.12	75
385958	205 222	710	----	----	----	20	1.56	< 5	30	< 0.5	420	0.59	< 0.5	14	497	945	11.57	0.24	1.60	310
385959	205 226	15	----	----	----	< 0.5	1.63	< 5	10	< 0.5	< 2	0.80	< 0.5	8	207	27	1.82	0.09	1.13	270
385960	205 226	15	----	----	----	< 0.5	1.60	< 5	10	< 0.5	< 2	0.72	< 0.5	12	234	25	2.22	0.06	1.52	275
385961	205 226	5	----	----	----	< 0.5	5.77	< 5	80	0.5	< 2	0.91	< 0.5	17	107	82	3.18	0.55	1.33	360
385962	205 226	< 5	----	----	----	< 0.5	2.99	< 5	40	< 0.5	< 2	0.19	< 0.5	2	117	15	0.92	0.45	0.33	99
385963	205 226	< 5	----	----	----	< 0.5	3.05	< 5	100	< 0.5	< 2	0.31	< 0.5	7	80	91	1.01	1.09	0.60	109
385964	205 226	1335	----	----	----	72	2.88	55	10	< 0.5	50	0.42	5.0	326	443	>10000	13.33	0.12	1.68	535
385965	205 226	1860	----	----	----	45	1.30	75	10	< 0.5	162	2.1	3.0	290	300	7700	12.80	0.08	1.43	970
385966	205 226	1405	----	----	----	35	2.25	65	50	< 0.5	80	2.3	5.5	265	358	6590	11.68	0.17	1.78	960
385967	205 226	1170	----	----	----	43	2.12	70	30	< 0.5	82	2.7	10.5	202	310	6230	10.60	0.11	1.98	840
385968	205 226	420	----	----	----	35	3.54	70	10	< 0.5	54	2.2	4.5	191	404	7060	12.16	0.10	2.73	940
387307	205 222	10	----	----	----	< 0.5	2.84	< 5	30	< 0.5	< 2	0.78	< 0.5	17	207	140	3.36	0.10	1.30	570
387308	205 226	20	----	----	----	< 0.5	5.01	< 5	30	< 0.5	< 2	5.0	0.5	52	151	770	0.25	0.20	2.55	945
387309	205 219	10	----	----	----	< 0.5	3.75	< 5	30	0.5	< 2	3.1	< 0.5	23	103	199	4.40	0.48	2.06	890
387310	205 294	5	< 5	----	----	< 0.5	2.67	< 5	70	< 0.5	< 2	0.47	< 0.5	6	126	116	1.29	0.62	0.15	75
387311	205 226	< 5	< 5	----	----	< 0.5	8.14	< 5	350	1.0	< 2	1.05	< 0.5	3	50	15	1.26	1.36	0.44	245
387312	205 222	1925	1095	----	----	92	2.04	< 5	80	< 0.5	20	0.09	1.5	102	272	>10000	16.21	0.47	2.03	635
387314	205 226	1640	1545	----	----	25	2.30	< 5	110	< 0.5	36	0.45	1.0	485	262	4490	19.63	0.23	1.69	385

CERTIFICATION: _____



ALS Chemex

Aurora Laboratory Services Ltd.
 Analytical Chemists * Geochemists * Registered Assayers
 212 Brooksbank Ave., North Vancouver
 British Columbia, Canada V7J 2C1
 PHONE: 604-984-0221 FAX: 604-984-0218

To: PAMICON DEVELOPMENTS LIMITED

##

611 - 675 W. HASTINGS ST.
 VANCOUVER, BC
 V6B 1N2

Project: WRL-S009
 Comments: ATTN: DOUG FULCHER

Page Number : 1-B
 Total Pages : 2
 Certificate Date: 06-SEP-2002
 Invoice No. : 10223184
 P.O. Number : WRL-S009
 Account : BM

CERTIFICATE OF ANALYSIS

A0223184

SAMPLE	PREP CODE	Mo ppm (ICP)	Na % (ICP)	Ni ppm (ICP)	P ppm (ICP)	Pb ppm (ICP)	S % (ICP)	Sb ppm (ICP)	Sr ppm (ICP)	Ti % (ICP)	V ppm (ICP)	W ppm (ICP)	Zn ppm (ICP)
385543	205 294	11	1.33	15	740	18	0.25	< 5	337	0.15	48	< 10	32
385544	205 226	1	0.14	9	90	< 2	0.01	< 5	18	0.02	6	< 10	2
385546	205 222	< 1	0.24	31	220	2	0.01	< 5	59	0.06	19	< 10	54
385574	205 222	13	0.14	345	190	6	1.28	15	42	0.15	153	< 10	138
385575	205 226	1	0.91	296	140	154	9.38	< 5	13	0.12	72	< 10	1940
385576	205 226	2	0.19	16	300	10	0.11	< 5	63	0.05	19	< 10	60
385577	205 226	1	1.40	6	370	12	0.14	< 5	120	0.06	24	< 10	108
385578	205 222	3	0.10	311	90	2	0.19	15	97	0.01	131	< 10	158
385579	205 226	1	0.01	28	300	< 2	< 0.01	< 5	7	< 0.01	12	< 10	8
385580	205 222	1	0.18	15	130	6	0.36	< 5	33	0.01	9	< 10	12
385581	205 226	4	0.13	83	270	4	0.35	< 5	32	0.13	185	10	78
385582	205 226	4	0.10	70	370	4	0.38	< 5	27	0.17	297	10	132
385583	205 226	1	0.07	18	130	2	0.42	< 5	15	0.06	61	< 10	26
385584	205 226	5	0.09	300	80	2	0.12	15	127	0.01	89	< 10	168
385585	205 222	5	0.03	147	70	< 2	0.03	5	14	0.01	32	< 10	50
385586	205 226	1	0.93	13	200	< 2	0.08	< 5	17	0.05	15	< 10	6
385587	205 226	1	0.24	20	40	< 2	0.27	< 5	8	0.01	10	< 10	10
385588	205 226	1	5.10	16	790	6	0.06	< 5	92	0.33	60	< 10	40
385589	205 226	< 1	0.29	7	90	< 2	0.11	< 5	7	0.03	19	< 10	2
385590	205 226	4	4.37	34	670	6	0.11	< 5	101	0.25	188	< 10	38
385591	205 226	2	0.56	19	100	14	0.23	< 5	24	0.04	20	< 10	28
385642	205 226	1	0.21	7	120	< 2	0.02	< 5	26	0.02	5	< 10	8
385958	205 222	2	0.05	15	110	8	0.41	< 5	7	0.11	105	90	26
385959	205 226	1	0.43	37	220	< 2	0.01	< 5	45	0.05	33	10	24
385960	205 226	1	0.25	58	130	< 2	0.01	< 5	31	0.05	46	< 10	30
385961	205 226	1	3.24	16	660	6	0.29	< 5	140	0.21	71	< 10	40
385962	205 226	< 1	1.15	0	100	< 2	0.01	< 5	13	0.04	12	< 10	0
385963	205 226	1	3.05	10	250	< 2	0.09	< 5	44	0.08	33	< 10	10
385964	205 226	< 1	0.90	164	70	122	6.57	< 5	13	0.10	83	10	1160
385965	205 226	< 1	0.18	297	50	86	>10.00	< 5	12	0.04	46	30	416
385966	205 226	< 1	0.73	257	80	110	8.11	< 5	16	0.08	77	10	866
385967	205 226	< 1	0.57	188	90	200	6.95	< 5	16	0.07	68	< 10	1765
385968	205 226	< 1	1.05	258	80	70	7.85	< 5	33	0.13	114	10	612
387307	205 222	1	0.34	48	100	4	0.12	< 5	34	0.12	86	< 10	62
387308	205 226	1	1.00	03	170	< 2	1.53	< 5	01	0.29	195	220	70
387309	205 219	6	0.77	56	120	2	0.40	< 5	42	0.22	147	20	60
387310	205 294	16	1.16	8	50	2	0.53	< 5	117	0.01	8	< 10	8
387311	205 226	1	4.31	10	300	6	0.19	< 5	245	0.11	20	< 10	28
387312	205 222	< 1	0.07	125	80	2	2.00	< 5	11	0.09	70	30	90
387314	205 226	6	0.22	382	230	< 2	8.33	5	24	0.13	91	10	36

CERTIFICATION: _____



ALS Chemex

Aurora Laboratory Services Ltd.
 Analytical Chemists * Geochemists * Registered Assayers
 212 Brooksbank Ave., North Vancouver
 British Columbia, Canada V7J 2C1
 PHONE: 604-984-0221 FAX: 604-984-0218

To: PAMICON DEVELOPMENTS LIMITED

##

611 - 675 W. HASTINGS ST.
 VANCOUVER, BC
 V6B 1N2

Project: WRL-S009
 Comments: ATTN: DOUG FULCHER

Page Number :2-A
 Total Pages :2
 Certificate Date: 06-SEP-2002
 Invoice No. :10223184
 P.O. Number :WRL-S009
 Account :BM

CERTIFICATE OF ANALYSIS A0223184

SAMPLE	PREP CODE		Au ppb	Au chec	Au FA	Au g/t	Ag ppm	Al %	As ppm	Ba ppm	Be ppm	Bi ppm	Ca %	Cd ppm	Co ppm	Cr ppm	Cu ppm	Fe %	K %	Mg %	Mn ppm
	FA+AA	ppb	g/t	Check	(ICP)	(ICP)	(ICP)	(ICP)	(ICP)	(ICP)	(ICP)	(ICP)	(ICP)	(ICP)	(ICP)	(ICP)	(ICP)	(ICP)	(ICP)	(ICP)	(ICP)
387315	205	226	5	-----	-----	-----	1.5	0.64	< 5	< 10	< 0.5	< 2	0.22	< 0.5	9	148	120	1.33	0.01	0.63	140
387316	205	226	< 5	-----	-----	-----	0.5	0.69	< 5	30	< 0.5	< 2	0.17	< 0.5	9	169	59	1.36	0.01	0.65	160
387317	205	219	570	-----	-----	-----	63	2.02	< 5	150	< 0.5	6	0.65	0.5	153	283	>10000	10.33	0.26	1.64	880
387318	205	294	< 5	-----	-----	-----	0.5	1.52	< 5	80	< 0.5	< 2	4.6	< 0.5	10	185	55	1.94	0.32	1.43	595
387319	205	219	725	-----	-----	-----	74	2.05	< 5	120	< 0.5	16	0.80	1.5	48	338	>10000	14.94	0.72	1.78	280
387320	205	294	< 5	-----	-----	-----	0.5	0.15	< 5	< 10	< 0.5	< 2	0.32	< 0.5	2	153	46	0.49	0.01	0.09	105
387321	205	222	465	-----	-----	-----	38	0.84	20	10	< 0.5	50	2.0	7.5	55	217	5390	5.30	0.03	1.66	1605
387322	205	226	250	-----	-----	-----	39	4.98	110	10	< 0.5	52	0.99	3.0	301	685	9310	13.53	0.22	2.35	580
387323	205	219	105	-----	-----	-----	24	1.10	10	< 10	< 0.5	30	2.2	1.5	27	282	3710	3.20	0.04	1.19	740
387324	205	222	180	-----	-----	-----	25	1.30	20	10	< 0.5	24	1.90	1.5	37	369	4180	3.45	0.04	1.06	600
387325	205	226	< 5	-----	-----	-----	< 0.5	0.10	< 5	10	< 0.5	< 2	22	< 0.5	< 1	10	66	0.43	0.04	12.61	193
387326	205	222	410	-----	-----	-----	14.5	1.22	5	130	< 0.5	10	5.6	29.0	29	186	2730	4.05	0.04	2.99	1845
387327	205	222	5	-----	-----	-----	< 0.5	0.71	< 5	30	< 0.5	6	0.68	< 0.5	9	271	130	1.43	0.05	0.58	240
387328	205	226	< 5	-----	-----	-----	< 0.5	0.07	135	490	1.0	2	0.93	0.3	1	31	13	1.23	1.33	0.19	310
387329	205	226	< 5	-----	-----	-----	< 0.5	7.72	125	500	1.0	< 2	0.88	< 0.5	< 1	45	9	1.23	1.45	0.15	320
387330	205	226	95	-----	-----	-----	< 0.5	6.91	30	270	0.5	< 2	1.00	< 0.5	4	41	12	0.96	0.62	0.31	365
387331	205	226	< 5	-----	-----	-----	< 0.5	4.76	5	2940	< 0.5	< 2	4.8	0.5	45	579	16	5.12	0.07	6.93	880
387332	205	226	265	-----	-----	-----	10.0	7.46	< 5	320	0.5	< 2	1.60	12.0	92	72	4660	4.70	1.24	1.00	775

CERTIFICATION: _____



ALS Chemex

Aurora Laboratory Services Ltd.
 Analytical Chemists * Geochemists * Registered Assayers
 212 Brooksbank Ave., North Vancouver
 British Columbia, Canada V7J 2C1
 PHONE: 604-984-0221 FAX: 604-984-0218

To: PAMICON DEVELOPMENTS LIMITED

##

611 - 675 W. HASTINGS ST.
 VANCOUVER, BC
 V6B 1N2

Project: WRL-S009
 Comments: ATTN: DOUG FULCHER

Page Number :2-B
 Total Pages :2
 Certificate Date: 06-SEP-2002
 Invoice No. :10223184
 P.O. Number :WRL-S009
 Account :BM

CERTIFICATE OF ANALYSIS

A0223184

SAMPLE	PREP CODE	Mo ppm (ICP)	Na % (ICP)	Ni ppm (ICP)	P ppm (ICP)	Pb ppm (ICP)	S % (ICP)	Sb ppm (ICP)	Sr ppm (ICP)	Ti % (ICP)	V ppm (ICP)	W ppm (ICP)	Zn ppm (ICP)
387315	205 226	2	0.01	22	< 10	< 2	0.04	< 5	3	< 0.01	32	< 10	18
387316	205 226	3	0.01	25	< 10	< 2	0.03	< 5	1	< 0.01	30	< 10	14
387317	205 219	3	0.08	92	200	2	0.87	< 5	10	0.09	78	< 10	54
387318	205 294	4	0.18	24	70	2	< 0.01	< 5	31	0.07	54	< 10	22
387319	205 219	3	0.06	51	110	6	2.33	< 5	8	0.12	111	< 10	74
387320	205 294	1	0.03	9	40	< 2	0.01	< 5	4	< 0.01	6	< 10	4
387321	205 222	5	0.19	71	70	150	1.25	< 5	19	0.01	29	< 10	1340
387322	205 226	4	1.89	222	130	98	8.75	5	23	0.21	149	< 10	508
387323	205 219	2	0.36	49	40	96	0.77	< 5	17	0.04	42	< 10	310
387324	205 222	4	0.54	51	50	74	1.20	< 5	16	0.05	44	< 10	304
387325	205 226	3	0.01	3	270	2	0.02	< 5	47	< 0.01	1	< 10	16
387326	205 222	5	0.52	54	120	58	0.39	< 5	26	0.03	35	< 10	5870
387327	205 222	3	0.09	31	170	2	0.01	< 5	21	0.03	19	< 10	80
387328	205 226	< 1	3.74	1	330	10	0.01	< 5	203	0.07	5	< 10	86
387329	205 226	1	3.67	2	310	14	0.01	< 5	311	0.07	4	< 10	34
387330	205 226	< 1	4.65	4	290	6	0.19	< 5	297	0.04	6	< 10	12
387331	205 226	5	0.67	308	1000	10	0.28	5	455	0.13	114	< 10	100
387332	205 226	4	3.13	26	690	4	0.71	< 5	113	0.30	95	< 10	1575

CERTIFICATION: _____ *

Work Report Summary

Transaction No: W0320.00134 Status: APPROVED
Recording Date: 2003-JAN-27 Work Done from: 2002-AUG-18
Approval Date: 2003-FEB-06 to: 2002-AUG-26

Client(s):
129617 ENGLISH, PERRY VERN

Survey Type(s):

ASSAY GEOL PSTRIP

Work Report Details:

Claim#	Perform	Perform Approve	Applied	Applied Approve	Assign	Assign Approve	Reserve	Reserve Approve	Due Date
KRL 1184917	\$0	\$0	\$1,200	\$1,200	\$0	0	\$0	\$0	2004-FEB-10
KRL 1184918	\$15,582	\$15,582	\$0	\$0	\$10,000	10,000	\$5,582	\$5,582	2004-FEB-07
KRL 1184919	\$0	\$0	\$3,600	\$3,600	\$0	0	\$0	\$0	2004-FEB-10
KRL 1184921	\$0	\$0	\$2,000	\$2,000	\$0	0	\$0	\$0	2004-FEB-07
KRL 1184922	\$0	\$0	\$400	\$400	\$0	0	\$0	\$0	2004-FEB-17
KRL 1184923	\$0	\$0	\$1,600	\$1,600	\$0	0	\$0	\$0	2004-FEB-17
KRL 1184924	\$0	\$0	\$400	\$400	\$0	0	\$0	\$0	2004-FEB-17
KRL 1184925	\$5,561	\$5,561	\$3,200	\$3,200	\$0	0	\$2,361	\$2,361	2004-FEB-17
KRL 1184926	\$0	\$0	\$800	\$800	\$0	0	\$0	\$0	2004-FEB-17
	\$21,143	\$21,143	\$13,200	\$13,200	\$10,000	\$10,000	\$7,943	\$7,943	

External Credits: \$0

Reserve: \$7,943 Reserve of Work Report#: W0320.00134

\$7,943 Total Remaining

Status of claim is based on information currently on record.



Date: 2003-FEB-07

GEOSCIENCE ASSESSMENT OFFICE
933 RAMSEY LAKE ROAD, 6th FLOOR
SUDBURY, ONTARIO
P3E 6B5

PERRY VERN ENGLISH
BOX 414
SOURIS, MANITOBA
R0K 2C0 CANADA

Tel: (888) 415-9845
Fax: (877) 670-1555

Submission Number: 2.24871
Transaction Number(s): W0320.00134

Dear Sir or Madam

Subject: Approval of Assessment Work

We have approved your Assessment Work Submission with the above noted Transaction Number(s). The attached Work Report Summary indicates the results of the approval.

At the discretion of the Ministry, the assessment work performed on the mining lands noted in this work report may be subject to inspection and/or investigation at any time.

If you have any question regarding this correspondence, please contact STEVEN BENETEAU by email at steve.beneteau@ndm.gov.on.ca or by phone at (705) 670-5855.

Yours Sincerely,



Ron Gashinski
Senior Manager, Mining Lands Section

Cc: Resident Geologist

Perry Vern English
(Claim Holder)

Redstar Gold Corp.
(Agent)

Assessment File Library

Perry Vern English
(Assessment Office)

Date / Time of Issue: Thu Feb 06 13:19:43 EST 2003

TOWNSHIP / AREA
BALL

PLAN
G-3740

ADMINISTRATIVE DISTRICTS / DIVISIONS

Mining Division
Land Titles/Registry Division
Ministry of Natural Resources District

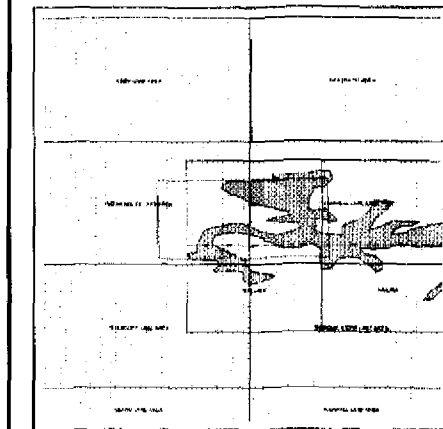
Red Lake
KENORA
RED LAKE

TOPOGRAPHIC

- Administrative Boundaries
- Township
- Concession Lot
- Provincial Park
- Indian Reserve
- City, P.N. & P.M.
- Contour
- Mine Shafts
- Mine Infrastructure
- Railway
- Road
- Trail
- Natural Gas Pipeline
- Utilities
- Tower

Land Tenure

- Freehold Patent
 - Surface And Mining Rights
 - Surface Rights Only
 - Mining Rights Only
- Leasehold Patent
 - Surface And Mining Rights
 - Surface Rights Only
 - Mining Rights Only
- Licence of Occupation
 - Uses Not Specified
 - Surface And Mining Rights
 - Surface Rights Only
 - Mining Rights Only
 - Land Use Permit
 - Order In Council (Not open for staking)
 - Water Power Lease Agreement
 - Mining Claims
 - Filed Only Mining Claims



LAND TENURE WITHDRAWALS

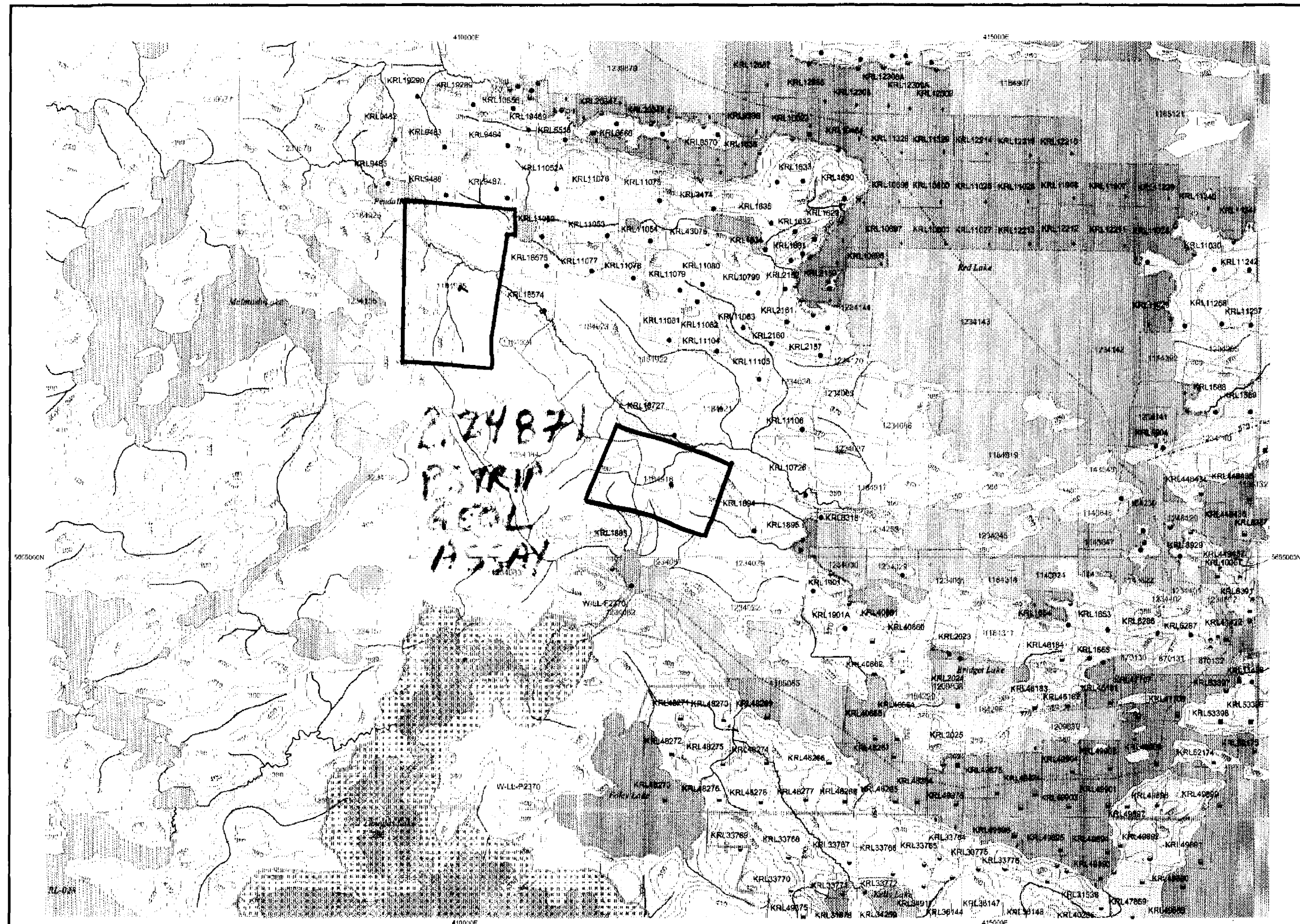
- 175a Areas Withdrawn from Circulation
 - Mining Acts Withdrawal Types
 - Surface And Mining Rights Withdrawn
 - Surface Rights Only Withdrawn
 - Mining Rights Only Withdrawn
 - Order In Council Withdrawal Types
 - Surface And Mining Rights Withdrawn
 - Surface Rights Only Withdrawn
 - Mining Rights Only Withdrawn

IMPORTANT NOTICES



LAND TENURE WITHDRAWAL DESCRIPTIONS

Identifier	Type	Date	Description
258	Wsm	Jan 1, 2001	PENDING APP. FOR EXPLORATORY LICENSE OIL NATURAL GAS (REG.765) MNR
8939	Wsm	Jan 1, 2001	LUND LAKE RESERVE 12 FEB 91 SRO
8940	Wsm	Jan 1, 2001	M.N.R. RESERVE FILE NO.188535 DATE 0 MARCH, 1876
W.L.L-P2370	Wsm	Aug 29, 2002	
W.L.L-P2370	Wsm	Aug 29, 2002	
155	Wsm	Jan 1, 2001	WOODLAND CARIBOU PROVINCIAL PARK



Those wishing to stake mining claims should consult with the Provincial Mining Recorders' Office of the Ministry of Northern Development and Mines for additional information on the status of the lands shown herein. This map is not intended for navigational, survey, or land title determination purposes as the information shown on this map is compiled from various sources. Completeness and accuracy are not guaranteed. Additional information may also be obtained through the local Land Titles or Registry Office, or the Ministry of Natural Resources.

The information shown is derived from digital data available in the Provincial Mining Recorders' Office at the time of downloading from the Ministry of Northern Development and Mines web site.

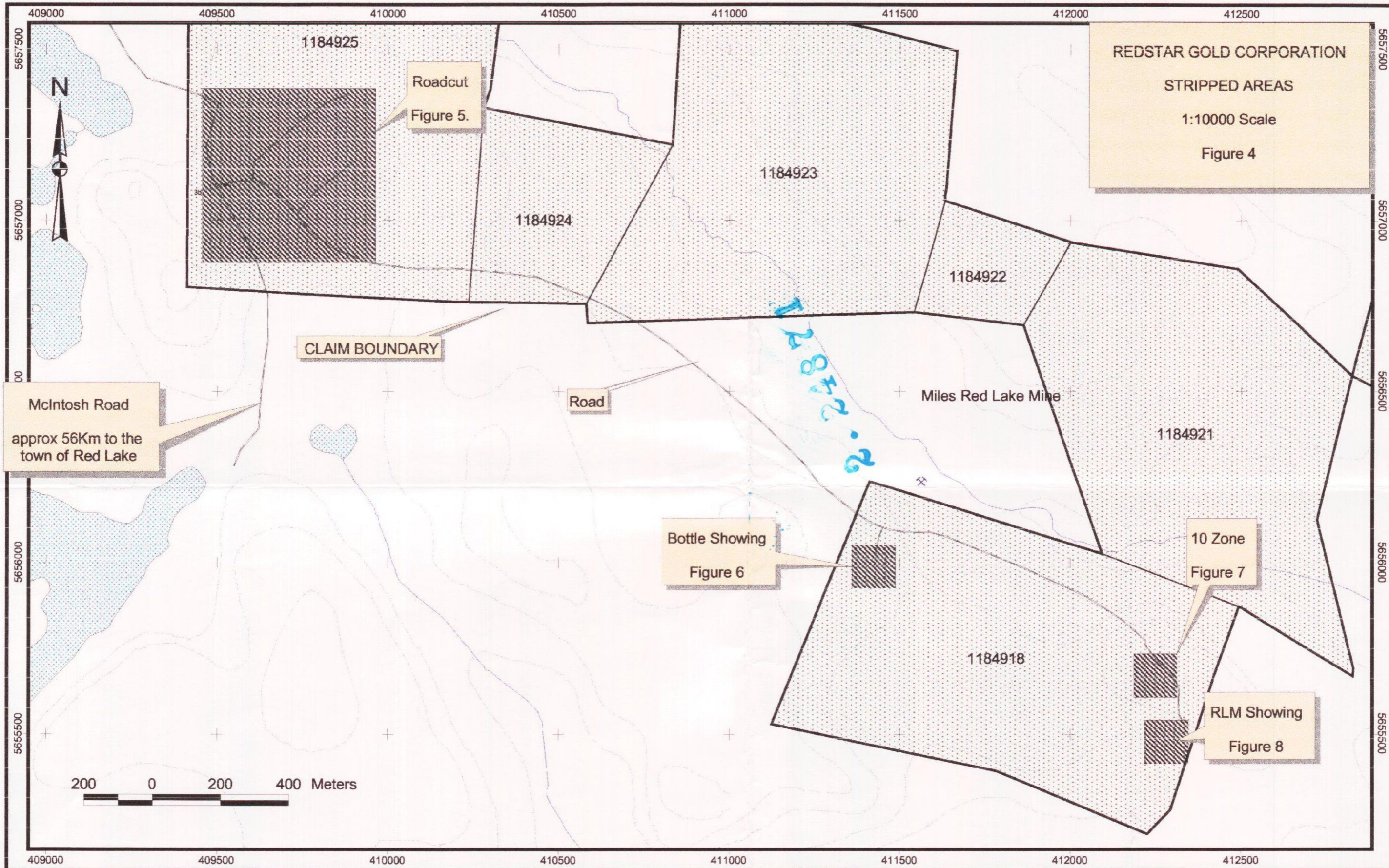
General Information and Limitations
 Contact Information: Provincial Mining Recorders' Office
 Will et Green: Miller Centre 933 Ramsey Lake Road
 Sudbury ON P3E 6B5
 Home Page: www.mndm.gov.on.ca/MNDM/MINESLANDS/minepage.htm

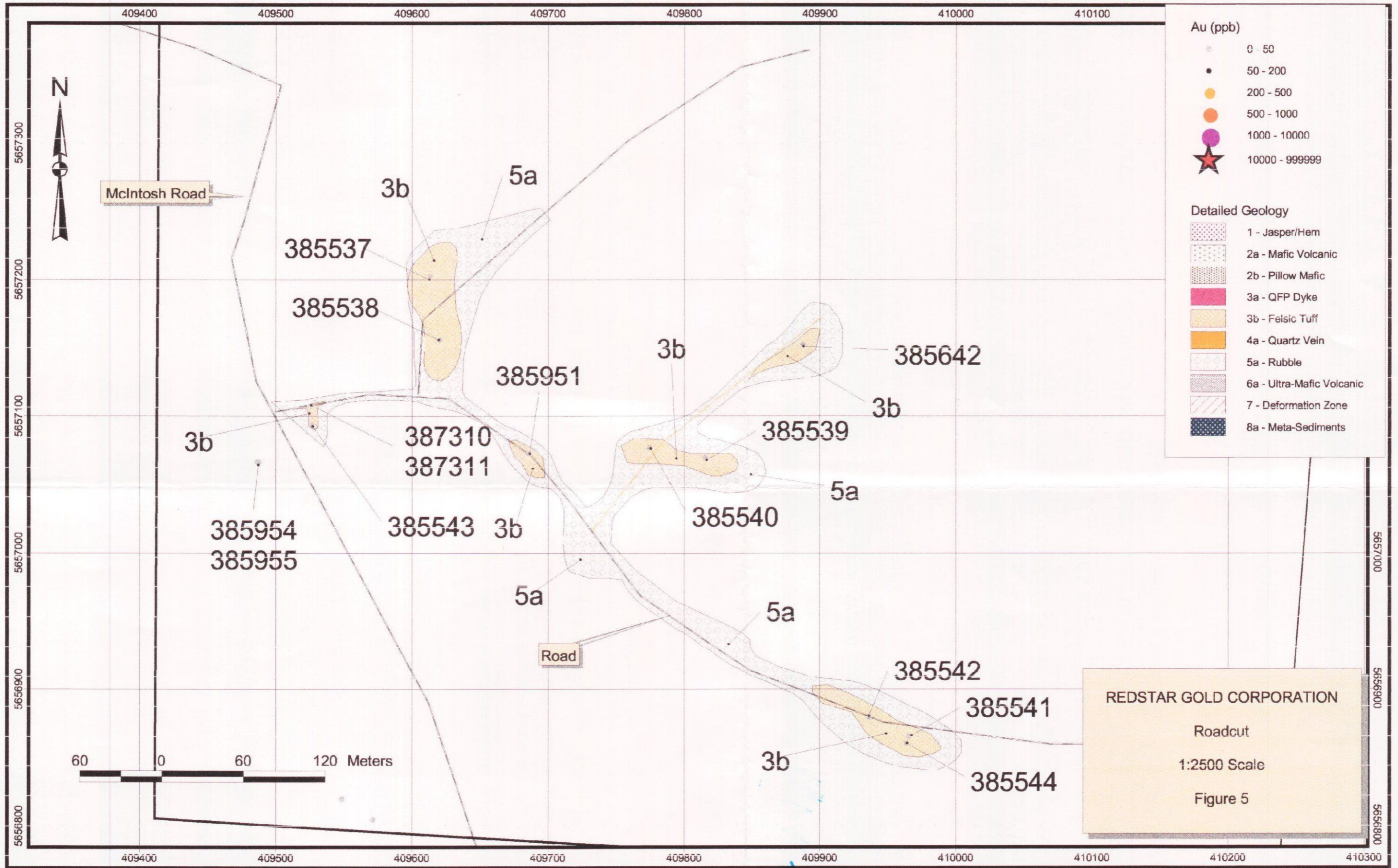
Toll Free: 1 (888) 415-9845 ext 578
 Fax: 1 (877) 670-1444

Map Datum: NAD 83
 Projection: UTM (5 degree)
 Topographic Data Source: Land Information Ontario
 Mining Land Tenure Source: Provincial Mining Recorders' Office

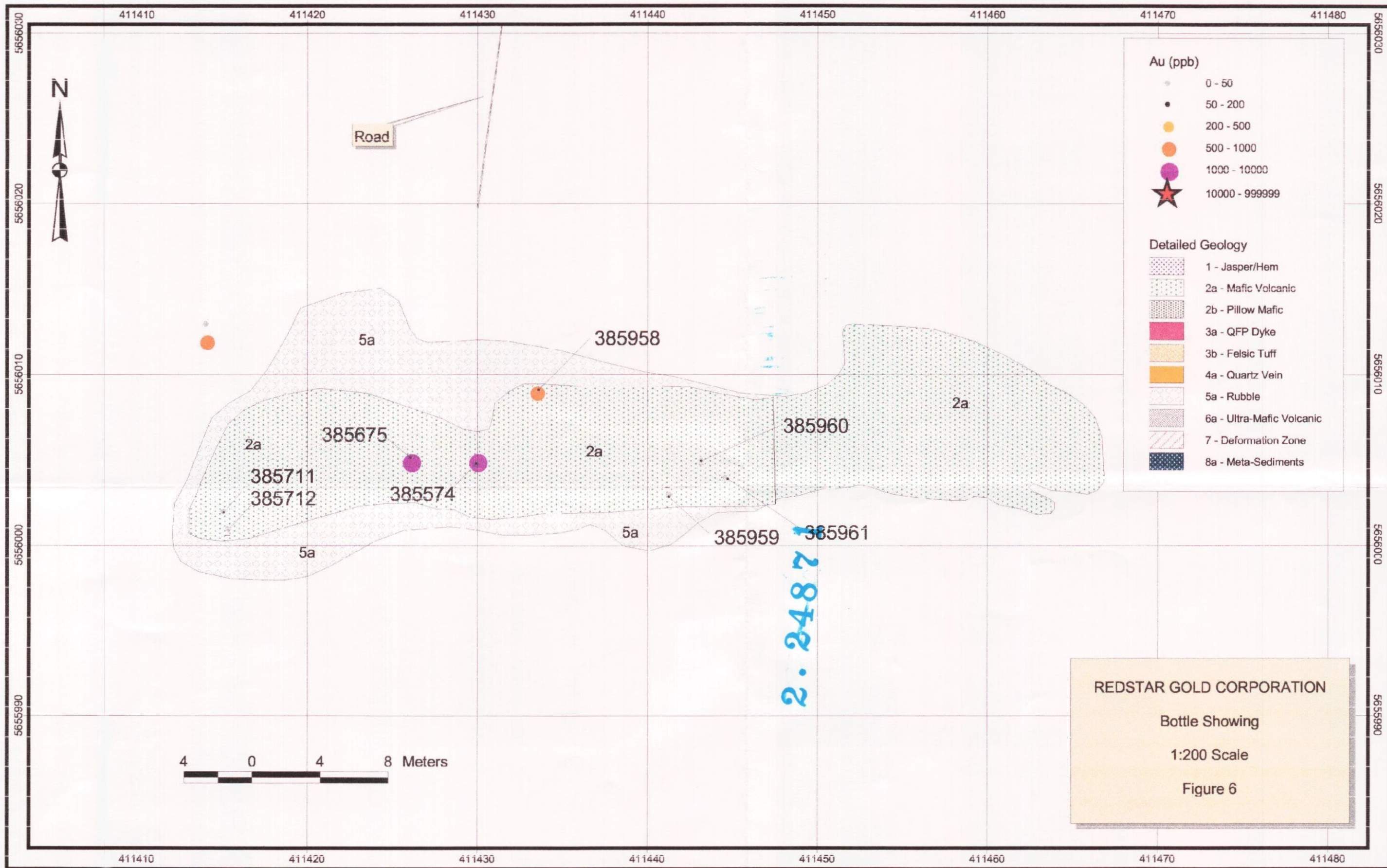
This map may not show unregistered land tenure and interests in land including certain patents, leases, watermarks, right of ways, flooding rights, licences, or other forms of disposition of rights and interest from the Crown. Also certain land tenure and land uses that restrict or prohibit free entry to stake mining claims may not be illustrated.







24871.2



2.2487



