

DIAMOND DRILLING



52M01SW0016 42 BALL TWP

010

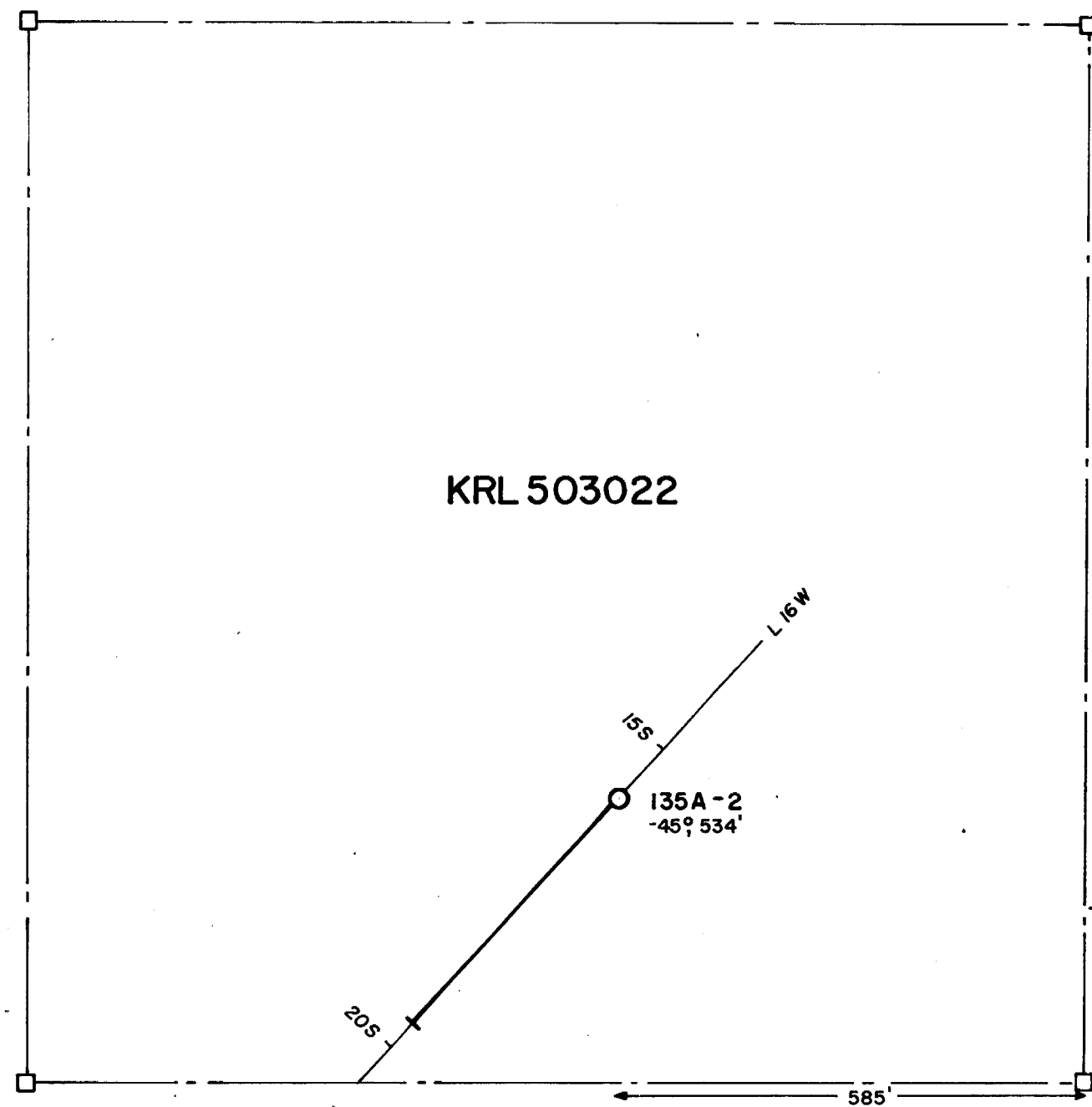
TOWNSHIP: BALL

REPORT No.: 42

WORK PERFORMED BY: Dome Exploration Ltd.

<u>CLAIM No.</u>	<u>HOLE No.</u>	<u>FOOTAGE</u>	<u>DATE</u>	<u>NOTE</u>
KRL 503065 503069	135A-1	384.0	May/80	(1)
KRL 503022	135A-2	534.0	June/80	(1)
KRL 503065	135A-3	529.0	July/80	(1)

NOTES: (1) #127-81



KRL 503022

135A-2
-45° 534'

585'

350'

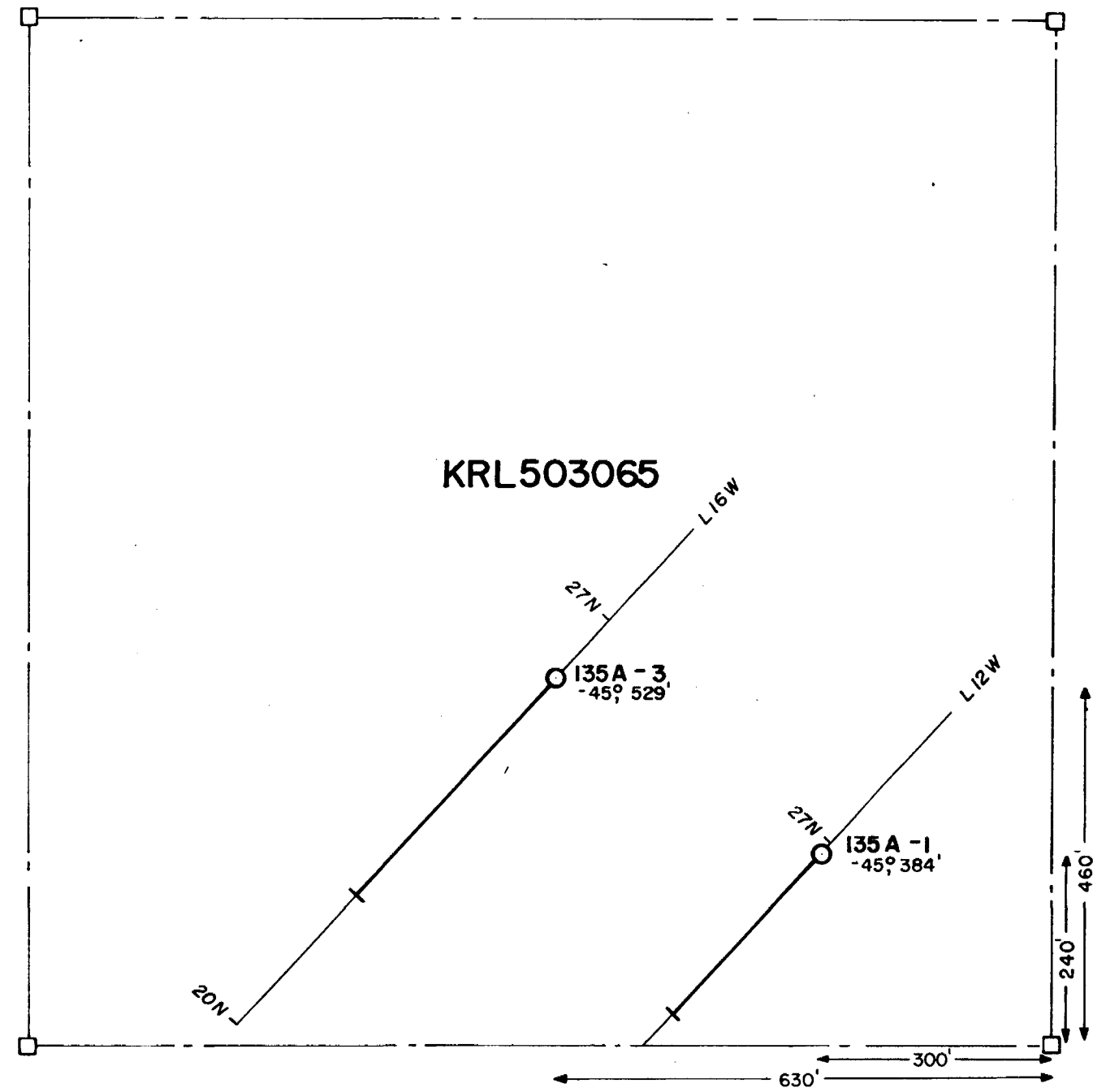
205'

L 16 W

155'



DOME EXPLORATION (CANADA) LTD.				
PROJ. 135A BALL TOWNSHIP, ONTARIO.				
DDH LOCATIONS				
SCALE	DATE	BY	N.T.S. No:	DWG. No:
1" = 200'	SEPT. 81	T.S.	52-M-1	135A-12



KRL503065

135A-3
-45° 529'

135A-1
-45° 384'



DOME EXPLORATION (CANADA) LTD				
PROJ. 135A BALL TOWNSHIP, ONTARIO.				
DDH LOCATION				
SCALE	DATE	BY	N.T.S. No.	DWG No.
1"=200'	SEPT. 81	T.S.	52-M-1	135A-11

DOMe EXPLORATION (CANADA) LIMITED

LOCATION: Line 16W, 15 + 80S. From collar
350'S & 585'E to Post #2 - KRL 503022
AZIMUTH: 223° (True) - Grid South

DIAMOND DRILL RECORD

	HOLE No 135A-2
--	--------------------------

PROPERTY: PROJECT 135A
BALL TOWNSHIP, ONTARIO

DIP: -45° LENGTH: 534' ELEVATION: CLAIM No: KRL 503022

STARTED: June 18, 1980 CORE SIZE: AQ DATE LOGGED: July 21, 1980 SECTION:

COMPLETED: July 13, 1980 DIP TESTS: at 500' - 41° (corrected) LOGGED BY: C. G. Cheriton

C. G. Cheriton

PURPOSE: To test electromagnetic & magnetic anomalies

FOOTAGE		DESCRIPTION	SAMPLE No.	FOOTAGE		LENGTH FEET	Au dwt/ton	Ag oz/ton	Cu %	Zn %		
from	to			from	to							
0.0	81.0	CASING: boulder of greenstone-carbonate gneiss.	26526	52.0	54.0	2.0	Tr					
81.0	303.0	META-IRON FORMATION: blue-black, thin bedded, pyritic, alternating with sections of grey & green quartz chlorite and garnet schist layers with numerous pyrite seams. No base metals observed.	26524	91.0	96.0	5.0						
		Heavy, fine grained black magnetite beds at 198 - 250 feet. Banding is uniform averaging 75° to core axis. Black graphitic sediments containing pyrite and pyrrhotite at 270 - 271 feet. Mostly cherty and thin bedded siliceous sediments 271 to 297 feet with chalcopyrite and pyrrhotite at 287 feet - few specks of scheelite at 302 feet.	26525	96.0	101.0	5.0						
			26527	113.0	117.0	4.0						
			26528	129.0	134.0	5.0						
			26529	134.0	139.0	5.0						
			26533	147.0	149.3	2.3	Tr					
			26534	151.0	153.0	2.0	Tr					
			26535	165.5	167.0	1.5	Tr					
			26530	178.0	183.0	5.0	Tr					
			26536	249.0	253.0	4.0	Tr					
			26537	270.0	272.0	2.0	Tr					
			26538	284.0	287.5	3.5	Tr					
			26539	289.0	292.7	3.7	Tr					
			26540	298.0	303.0	5.0	Tr					
303.0	459.0	QUARTZ GARNET GNEISS: meta-volcanic, dark grey, banded and streaky. Some barren pyrrhotite at 393 - 394 feet. Patchy alteration and feldspar metacrysts at 425 - 450 feet. Banding at 70°.										
459.0	477.0	DIABASE DYKE: grey, fine grained, cut by minor quartz-carbonate veinlets.										
477.0	534.0	META-SEDIMENT: green and grey, banded, thin bedded quartz chloritic garnet gneiss similar to iron formation above, Pyrrhotite at 500' & 525';	D9193	478.5	480.0	1.5	Tr					
			D9194	508.0	509.5	1.5	Tr					

DOME EXPLORATION (CANADA) LIMITED

LOCATION: Line 16W, 26 + 00N. From collar
460'S & 630'E to Post #2 - KRL 503065
AZIMUTH: 223° (True) - Grid South

DIAMOND DRILL RECORD

	HOLE No 135A-3
PROPERTY: PROJECT 135A	
BALL TOWNSHIP, ONTARIO	
CLAIM No: KRL 503065	
LOGGED BY: C. G. Chariton <i>C. G. Chariton</i>	

DIP: -45° LENGTH: 529' ELEVATION: CLAIM No: KRL 503065

STARTED: July 14, 1980 CORE SIZE: AQ DATE LOGGED: Sept. 10, 1980 SECTION:

COMPLETED: July 31, 1980 DIP TESTS: at 304' - 43° (corrected) LOGGED BY: C. G. Chariton
500' - 42°

PURPOSE: To test west extension of the EM anomaly tested by 135A-1

FOOTAGE		DESCRIPTION	SAMPLE No.	FOOTAGE		LENGTH FEET	Au dwt/ton	Ag oz/ton	Cu %	Zn %		
from	to			from	to							
0.0	10.0	CASING										
10.0	157.0	QUARTZ SERICITE SCHIST: yellowish grey, probably meta-rhyolite with scattered pyrite disseminations and significant chalcopryrite observed at 68', 110', 114' and 154'. Banding at 80° to core axis.	D9185	67.0	69.0	2.0	Tr					
			26541	110.0	113.0	3.0	Tr					
			26542	113.0	118.0	5.0	Tr					
			D9186	153.0	155.5	2.5	0.40					
			D9187	157.0	159.0	2.0	Tr					
157.0	243.0	TALC CARBONATE SCHIST AND GNEISS: bluish grey, locally mottled and patchy with pyritic chlorite schist sections at 180' - 186', 207' - 213', and 241' - 243' and 3 inches of quartz, pyrite and chalcopryrite at 183'. Banding averaging at 75°.	D9188	182.0	183.5	1.5	Tr					
243.0	268.0	COMPOSITE QUARTZ FELDSPAR PORPHYRY DIKE: grey with inclusion of pyritized green chlorite schist at 255' - 256'.										
268.0	324.0	TALC CARBONATE SCHIST: as above.										
324.0	477.0	QUARTZ RHYOLITE PORPHYRY: grey with up to 1% pyrite disseminations locally and scattered crystals of chalcopryrite. Section contains 10 to 20 foot layers of dark green chlorite schist which may be meta-andesite or meta andesite tuff ? Banding averages 80°. Red fluorescence at 371'. Few specks of scheelite at 436'.	D9189	327.0	330.0	3.0	Tr					
			D9190	433.0	437.0	4.0	Tr					
			D9192	471.0	473.0	2.0	Tr					



52M015W0016 42 BALL TWP

#127-81

900
DOME EXPLORATION CO.

POSITION
MINING RIGHTS
Disposition File

