



52M01SW0191 11 BALL TWP

010

Diamond Drilling

Township of BALL

Report NO 11

Work performed by: Stupack and Johnson

Claim NO	Hole NO	Footage	Date	Note
KRL 40136	AWL-23	122.0'	1957	
	30	123.0'	July/58	if
KRL 41568	AWL-29	84.0'	June/58	if 200-150/58
KRL 40138	AWL-38	121.0'	1959	if
KRL 46182	AWL-40	136.0'	May/60	if 200-150/60
KRL-47707	AWL-41	132.0'	Sept/60	if 200-150/60
	48	103.0'	July/61	if 200-150/61
	52	124.0'	June/62	if 200-150/62
	56	106.0'	Oct/62	if 200-150/62
	SJ65-3	104.0'	July/65	if 200-150/65
KRL 48607 48807	AWL-46	126.0'	May/61	if 200-150/61
KRL 46183 (re-staking of 41586)	AWL-47	164.0'	June/61	if 200-150/61
KRL-46181	AWL-53	162.0'	June/62	if 200-150/62
	57	114.0'	Apr/63	if 200-150/63

Notes:

Diamond Drilling

Township of BALL (Cont'd.)

Report NO 11

Work performed by:

Claim NO	Hole NO	Footage	Date	Note
KRL 52610	AWL-SJ65-2	123.0'	June/65	4) 0240-0242
(re-staking of 40138)	JJ66-2	125.0'	Sept/66	17)
	68-2	127.0'	June/68	6) 0836-0839
KRL 52608	AWH-JJ67-2	127.0'	June/67	7) 0840-0842
(re-staking of 40136)				

Notes:

Holes JJ66-2 and JJ67-2 drilled by Cochenour Explorations

DRILL LOG BY STUPACK-JOHNSON

(recopied by Assessment Work Library)

Claim No: KKL.40136

AWL Hole No: 23

S.J. Hole No: -

Total Footage: 122

Date Started: 1957

Dip: 50°

Date Finished:

Log:

<u>From</u>	<u>To</u>	<u>Description</u>
0	20	mostly carbonates with few quartz stringers 1-2"
20	30	slightly mineralized carbonated rock & greenstone
30	40	greenstone slightly mineralized
40	52	dolomites, slightly mineralized
52	62	quartz porphyry
62	63½	quartz vein containing galena & chalco pyrites
63½	67½	schisted porphyry
67½	72½	quartz porphyry containing pyrites
72½	92½	carbonates
92'	97½	iron formation
97½	102½	schisted iron and greenstone
102½	112½	greenstone containing fine cube iron pyrites
112½	122	carbonates

DRILL LOG BY STUPACK-JOHNSON

(recopied by Assessment Work Library)

Claim No: KRL.40136

AWL Hole No: 30

S.J. Hole No: -

Total Footage: 123

Date Started: July 7, 1958

Dip: 45°

Date Finished: July 12, 1958

Log:

<u>From</u>	<u>To</u>	<u>Description</u>
0	12	carbonates
12	28	quartz (mineralized)
28	41	carbonates & quartz mixed
41	68	blue quartz (mineralized)
68	73	diorite schist
73	93	diorite
93	95	white quartz (mineralized)
95	123	porphyry

DRILL LOG BY STUPACK-JOHNSON

(recopied by Assessment Work Library)

Claim No: KRL.41586

AWL Hole No: 29

S.J. Hole No: 1

Total Footage: 84

Date Started: June 14, 1958

Dip: 35°

Date Finished: June 16, 1958

Log:

<u>From</u>	<u>To</u>	<u>Description</u>
0	11	iron formation
11	16	tuff mineralized
16	30	carbonates
30	38	quartz mineralized
38	52	carbonates
52	67	porphyry
67	84	carbonates

DRILL LOG BY STUPACK-JOHNSON

(recopied by Assessment Work Library)

Claim No: KRL. 40138

AWL Hole No: 38

S.J. Hole No: -

Total Footage: 121

Date Started: 1959

Dip: 40°

Date Finished:

Log:

<u>From</u>	<u>To</u>	<u>Description</u>
0	5	greenstone
5	8	mineralized greenstone
8	30	carbonates
30	33	mineralized carbonates with few quartz stringers
33	95	carbonates
95	121	carbonates with some quartz near bottom of hole.

DRILL LOG BY STUPACK-JOHNSON

(recopied by Assessment Work Library)

Claim No: KRL.46182

AWL Hole No: 40

S.J. Hole No: 1

Total Footage: 136

Date Started: May 22, 1960

Dip: 45°

Date Finished: May 29, 1960

Log:

<u>From</u>	<u>To</u>	<u>Description</u>
0	26	carbonates
26	62	porphyry with few quartz stringers
62	70	slightly mineralized quartz
70	101	talc and carbonates mixed
101	136	porphyry

DRILL LOG BY STUPACK-JOHNSON

(recopied by Assessment Work Library)

Claim No: KRL.47707

AWL Hole No: 41

S.J. Hole No: -

Total Footage: 132

Date Started: September 3, 1960

Dip: 40°

Date Finished: September 7, 1960

Log:

<u>From</u>	<u>To</u>	<u>Description</u>
0	31	carbonate
31	39	massive sulphides in carbonates & quartz
39	63	slightly mineralized quartz
63	76	quartz stringers in carbonates
76	86	quartz porphyry
86	132	carbonates

DRILL LOG BY STUPACK-JOHNSON

(recopied by Assessment Work Library)

Claim No: KRL.47707 AWL Hole No: 48
S.J. Hole No: 1 Total Footage: 103
Date Started: July 21, 1961 Dip: 45°
Date Finished: July 26, 1961

Log:

<u>From</u>	<u>To</u>	<u>Description</u>
0	8	quartz containing galena & pyrites
8	65	quartz with fine sulphides
65	88	porphyry
88	93	porphyry schist and talc
93	103	talc

200 0,36

DRILL LOG BY STUPACK-JOHNSON

(recopied by Assessment Work Library)

Claim No: KRL.47707

AWL Hole No: 52

S.J. Hole No: -

Total Footage: 124

Date Started: June 5, 1962

Dip: 35°

Date Finished: June 9, 1962

Log:

<u>From</u>	<u>To</u>	<u>Description</u>
0	22	quartz stringers in carbonates 1-4"
22	50	quartz containing fine sulphides
50	58	white quartz well mineralized
58	78	mineralized porphyry
78	81	quartz (mineralized)
81	104	porphyry
104	124	mostly carbonates

200 0167

DRILL LOG BY STUPACK-JOHNSON

(recopied by Assessment Work Library)

Claim No: KRL.47707

AWL Hole No: 56

S.J. Hole No: -

Total Footage: 106

Date Started: October 25, 1962

Dip: 40° (NNW_)

Date Finished: October 30, 1962

Log:

<u>From</u>	<u>To</u>	<u>Description</u>
0	22	quartzite with carbonate mixed
22	28	quartz with some galena
28	45	quartzite containing fine pyrites
45	68	quartz and carbonates mixed
68	82	quartzite and porphyry mixed
82	106	mostly porphyry

200-0868

DIAMOND DRILL RECORD

PROPERTY Stupack - Johnson HOLE NO. SJ 65 - 3

SHEET NUMBER One SECTION FROM _____ TO _____ STARTED July 2nd, 1965
 LATITUDE Main KRL 47707 DATUM surface. COMPLETED July 10th, 1965
 DEPARTURE Ball Township. BEARING North 80 west. ULTIMATE DEPTH 104.0 ft.
 ELEVATION _____ DIP Minus 45 degrees PROPOSED DEPTH 125.0 ft.

DEPTH FEET	FORMATION	SAMPLE NO.	WIDTH OF SAMPLE	GOLD \$	SLUDGE GOLD \$		
0 - 1.0	Casdrq						
1.0 - 22.0	quartz Porphyry, sheared, altered, silicified						
22.0 - 27.0	quartz Carbonate, fractures filled with blue quartz less than 1% pyrite mineralization.						
27.0 - 42.5	quartz Porphyry, sheared, altered, silicified. white quartz stringers at 29.7 to 29.9 and 36.6 to 36.8 barren.						
42.5 - 55.5 45.5	quartz Carbonate, white, barren.						
45.5 - 70.2	quartz porphyry, sheared, altered, not as heavily silicified as above sections.						
70.2 - 71.8	White quartz vein, 1% pyrite few specks galena and sphalerite.	7706	1.6'	Tr.	Tr.		?
71.8 - 95.0	quartz porphyry, sheared, altered, some silicification scattered pyrite.						
95.0 - 97.8	White quartz vein, barren, few specks pyrite.						
97.8 - 104.0	quartz porphyry, sheared, altered, some silicification scattered pyrite, rust stained fracture at 101.2 ft.						

RED LAKE
MINING DIV.
RECEIVED
FEB 3 1966
AM 7 8 9 10 11 12 1 2 3 4 5 6 PM

700 0885

N.M.P., TORONTO - STOCK FORM NO. 501 REV. 12/51

DRILLED BY Stupack SIGNED J. Durham

DRILL LOG BY STUPACK-JOHNSON

(recopied by Assessment Work Library)

Claim No: KRL.48067

AWL Hole No: 46

S.J. Hole No: 1

Total Footage: 126

Date Started: May 26, 1961

Dip: 40° (S.W.)

Date Finished: May 30, 1961

Log:

<u>From</u>	<u>To</u>	<u>Description</u>
0	48	porphyry
48	58	porphyry slightly mineralized
58	62	quartz stringers and carbonates
62	85	carbonates
85	101	carbonates with quartz stringers 1-3"
101	126	carbonates with porphyry dykes

DRILL LOG BY STUPACK-JOHNSON

(recopied by Assessment Work Library)

Claim No: KRL.46183

AWL Hole No: 47

S.J. Hole No: -

Total Footage: 164

Date Started: June 7, 1961

Dip: 40°(N)

Date Finished: June 15, 1961

Log:

<u>From</u>	<u>To</u>	<u>Description</u>
0	47	talc with quartz stringers 1-4 ins.
47	58	talc with porphyry schist
58	71	porphyry mineralized
71	85	quartz stringers in porphyry 1-2 ins.
85	120	porphyry & carbonates
120	164	carbonates

DRILL LOG BY STUPACK-JOHNSON

(recopied by Assessment Work Library)

Claim No: KRL. 46181

AWL Hole No: 53

S.J. Hole No:

Total Footage: 162

Date Started: June 11, 1962

Dip: 45°(S)

Date Finished: June 18, 1962

Log:

<u>From</u>	<u>To</u>	<u>Description</u>
0	25	porphyry few quartz stringers
25	70	mostly greenstone
70	88	greenstone mixed with talc
88	91	quartz stringers mineralized
91	101	greenstone
101	120	banded iron, chert and quartz
120	127	porphyry
127	151	porphyry and carbonates mixed
151	162	all carbonates

DRILL LOG BY STUPACK-JOHNSON

(recopied by Assessment Work Library)

Claim No: KRL.46181

AWL Hole No: 57

S.J. Hole No: -

Total Footage: 114

Date Started: April 20, 1963

Dip: 40°

Date Finished: April 25, 1963

Log:

<u>From</u>	<u>To</u>	<u>Description</u>
0	15	porphyry
15	32	carbonates
32	38	schisted porphyry mineralized
38	60	porphyry
60	72	quartz stringers 1-2" in porphyry (min.)
72	88	porphyry
88	114	quartzite and carbonates mixed

DIAMOND DRILL RECORD

PROPERTY Stupa di Johnson Group HOLE NO. SJ 65.-2

SHEET NUMBER Two. SECTION FROM _____ TO _____ STARTED _____
 LATITUDE _____ DATUM _____ COMPLETED _____
 DEPARTURE _____ BEARING _____ ULTIMATE DEPTH _____
 ELEVATION _____ DIP _____ PROPOSED DEPTH _____

DEPTH FEET	FORMATION	SAMPLE NO.	WIDTH OF SAMPLE	GOLD \$	SLUDGE GOLD \$
56.0 - 63.5	and grey quartz in stringers and blebs @ 55.5, 59.2, - 59.8, - 61.5, - 62.8. scattered cube pyrite.				
63.5 - 64.5	Dike, Porphyry, squeezed, altered.				
64.5 - 75.0	Grey Lava, Carbonated and silicified, scattered cube pyrite mineralization, quartz blebs @ 64.6, 64.9, 65.2, 68.9, 70.8 to 71.2, 71.4, 72.2, 72.7, 74.0, 74.2.				
75.0 - 77.6	Grey Lava, brecciated, 55% white quartz, fragments of grey lava, brecciated, in quartz, sparse pyrite min.				
77.6 - 78.0	Dike, porphyry, squeezed, altered.				
78.0 - 78.6	quartz & carbonate vein, brecciated, some white quartz in stringers, some pyrite.				
78.6 - 83.0	Grey white silicification, some breccia, fragments and carbonate, sparse pyrite.				
83.0 - 84.6	Dike, Dark grey, porphyritic, slight banding, cube pyrite scattered throughout.				
84.6 - 86.8	Breccia, white quartz 40%, fragments of carbonate and grey lava, altered, scattered pyrite.				
86.8 - 93.7	Dike, Dark grey, porphyritic, as above.				
93.7 - 111.4	quartz carbonate breccia, altered to a gray cherty looking material, rusty sections @ 90.6, 98.5, 103.6 105.5 @ 15° to core.				

RED LAKE
MINING DIV.

RECEIVED

JUL 6 1900

AM 7:30 11:30 12:30 4:56 PM

200 007

DRILLED BY

SIGNED

DIAMOND DRILL RECORD

DAN L. WILSON

PROPERTY Stupack Johnson Group. HOLE NO. SJ 65 - 2

SHEET NUMBER One SECTION FROM _____ TO _____ STARTED June 12th, 1965.
 LATITUDE _____ DATUM _____ COMPLETED June 28th, 1965.
 DEPARTURE _____ BEARING North 40° West. ULTIMATE DEPTH 123.0'
 ELEVATION _____ DIP Minus ~~NE~~ 44° PROPOSED DEPTH 120.0'

DEPTH FEET	FORMATION	SAMPLE NO.	WIDTH OF SAMPLE	GOLD \$	SLUDGE GOLD \$		
0 - 3.0	Casing.						
3.0 - 4.3	Gray Lava, carbonated.						
4.3 - 6.5	Grey Lava, brecciated, white quartz stringers, sparse pyrite mineralization.						
6.5 - 8.0	Grey Lava, some carbonate alteration.						
8.0 - 15.5	Grey Lava, silicification and carbonate alteration, sparse pyrite.						
15.5 - 19.0	Grey Lava, little carbonate alteration, some brecciation						
19.0 - 24.3	Grey Lava, considerable carbonate alteration and silicification, scattered cube pyrite.						
24.3 - 30.0	Grey lava, brecciated, white quartz vein @ 25.5 to 26.0 2" at 27.4'.						
30.0 - 39.5	Grey Lava, Banded, brecciated, scattered cube pyrite and quartz blebs @ 31.4, - 35.0, - 37.6.						
39.5 - 42.5	Grey Lava, Brecciated, some silicification @ 40.8' 1/2 inch quartz vein with pyrite mineralization.						
42.5 - 56.0	Grey Lava, brecciated, more silicification & carbonate more quartz in stringers and blebs, some green grey alteration, possibly due to pyrite stringers and blebs of pyrite,						
56.0 - 63.5	Grey Lava, Brecciated, carbonated and silicified, white quartz						

RED LAKE
MINING DIV.
RECEIVED
JUL 6 1965
7:30 AM - 2:31 PM

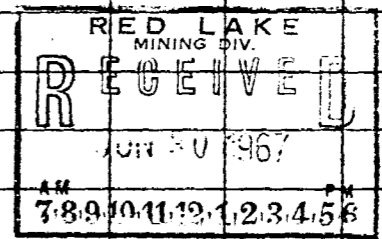
9880-106

DRILLED BY SIGNED

DIAMOND DRILL RECORD - COCHENOUR EXPLORATIONS LTD.

HOLE NO. J.J. 66 - 2	BEARING South	LAT. Sept. 6, 1966	DATE START Sept. 6/66	LOGGED BY
PROPERTY: Stupack Johnson	DIP - 45°	DEP.	COMPLETED Sept. 11/66	J.E. Durham
CORE SIZE: EXT. 7/8"	ELEV. Unknown	DEPTH: 125.0'	SECTION _____ TO _____	DATE: Sept. 15, 1966

DEPTH		GEOLOGICAL DESCRIPTION	SAMPLES				ASSAYS				GRAPHIC LOG	
FROM	TO		NO	FROM	TO	WIDTH						
0	3.0	Casing										
3.0	27.0	Lava, grey color - heavily carbonated, brecciated, some white quartz, sparse pyrite mineralization.										
27.0	31.0	Dike - Porphyry - matrix dark grey white phenocrysts - possibly Feldspar.										
31.0	56.0	Lava, Grey color as above, some silicification at 53.0 to 56.0 contact.										
56.0	61.0	Dike - Porphyry - as above at 27.0 - 31.0										
61.0	95.0	Lava, grey color, 50% to 60% carbonate white quartz stringer 1" at 92.6 ft, few pyrite crystals.										
95.0	97.5	Dike - porphyry as above.										
97.5	98.2	Quartz Carbonate vein, 50% white quartz, balance carbonate and fragments grey lava, sparse pyrite mineralization.										
98.2	112.5	Lava, grey color, heavily carbonated, sparse pyrite mineralization - 1/2" white quartz vein at 110.0'.										



200 2000

DIAMOND DRILL RECORD-COCHENOUR EXPLORATIONS LTD.

HOLE NO. J.J. 66.2 BEARING LAT. DATE START LOGGED BY

PROPERTY: Claim K.R.L. DIP DEP. COMPLETED

CORE SIZE: ELEV. DEPTH: SECTION ____ TO ____ DATE:

DEPTH SAMPLES ASSAYS

FROM TO GEOLOGICAL DESCRIPTION NO FROM TO WIDTH GRAPHIC LOG

112.5 115.0 Dike porphyry, as above.

115.0 125.0 Lava as above, slightly brecciated, some

grey cherty looking material.

RED LAKE
MINING DIV.
RECEIVED
JUN 20 1967
AM 7:8 9:10 11:12 1:2 3:4 5:6 PM

66-2-112.5-115.0



DIAMOND DRILL RECORD

Bank Mt

PROPERTY Stupack Johnson group HOLE NO. 68 - 2

SHEET NUMBER one SECTION FROM _____ TO _____ STARTED June 3rd. 1958
 LATITUDE claim TPL 52610 DATUM _____ COMPLETED June 24. 1958.
 DEPARTURE core size. 7/8 inch BEARING North ULTIMATE DEPTH 127.0 ft.
 ELEVATION _____ DIP -50° PROPOSED DEPTH 125.0 ft.

DEPTH FEET	FORMATION	SAMPLE NO.	WIDTH OF SAMPLE	GOLD \$	SLUDGE GOLD \$
00 - 7.0	gelling.				
7.0 - 14.0	diorite, saered at 40° to core axis. quartz-carbonate stringers at 7.5' and 7.8' and 10.0' and 10.5'				
14.0 - 17.5	dike, granitic, grey, contacts at 60° to core axis.				
17.5 - 24.5	diorite, fine grained, grey, 21.0 to 22.0 40% quartz carbonate in veinlets and filling breccia				
24.5 - 32.0	lamprophyre dike, some micaceous alteration.				
32.0 - 54.5	diorite, grey, fine grained, some quartz carb. veinlets and blebs.				
54.5 - 67.0	lamprophyre dike, some alteration to mica. 1/2" quartz veinlets at 55.0'				
67.0 - 82.0	lava, altered, chloritic and carbonated 30% red rust at 82.0' contact.				
82.0 - 95.0	diorite, fine grained, grey color, 1/2" quartz veinlet at 84.5'				
95.0 - 98.0	Lava, blue grey, fine grained, badly broken up, lost core 10%				
98.0 - 99.0	dike, dark brown grey, white flecks, possibly feldspars. (porphyry)				

RED LAKE
MINING DIV.
RECEIVED
JUN 24 1958
AM 7:34 PM 4:56

1000 2837

DRILLED BY Wm. Stupack

SIGNED J. E. Ducham

DATE 1967

DIAMOND DRILL RECORD-COCHENOUR EXPLORATIONS LTD

HOLE NO. JJ 67-2	BEARING South	LAT.	DATE START June 5, 1967	LOGGED BY
PROPERTY: Stupack-Johnson	DIP -45°	DEP.	COMPLETED June 11 "	J.E. Durham
CORE SIZE: EXT 7/8"	ELEV. Unknown	DEPTH:	SECTION _____ TO _____	DATE: June 25, 1967

DEPTH		GEOLOGICAL DESCRIPTION	SAMPLES				ASSAYS				GRAPHIC LOG
FROM	TO		NO	FROM	TO	WIDTH					
0	5.0	Casing									
5.0	8.2	Lava, sheared, Chloritic, some carbonate.									
8.2	12.5	Lava, as above, small red garnets in this section.									
12.5	23.3	Lava, sheared, chloritic, massive									
23.3	58.0	Lava, light gray color, fine grained, carbonated; numerous quartz carbonate stringers from pencil line to 3/4". Some rust at 55 - 56'.									
58.0	59.0	Ground core.									
59.0	60.0	Talcosse, fine grained; 1" white quartz stringer, few specks cpy.									
60.0	65.0	Lava, dark fine grained; massive quartz vein at 61.0; 3" quartz vein at 63.0									
65.0	66.0	Silicified quartz carbonate zone, 40% quartz.									
66.0	68.2	Dike, black fine grained, massive.									
68.2	80.0	Talcosse, fine grained, numerous.									

RED LAKE MINING DIV.
RECEIVED
 JUN 20 1967
 AM 7 8 9 10 11 12 1 2 3 4 5 6 PM

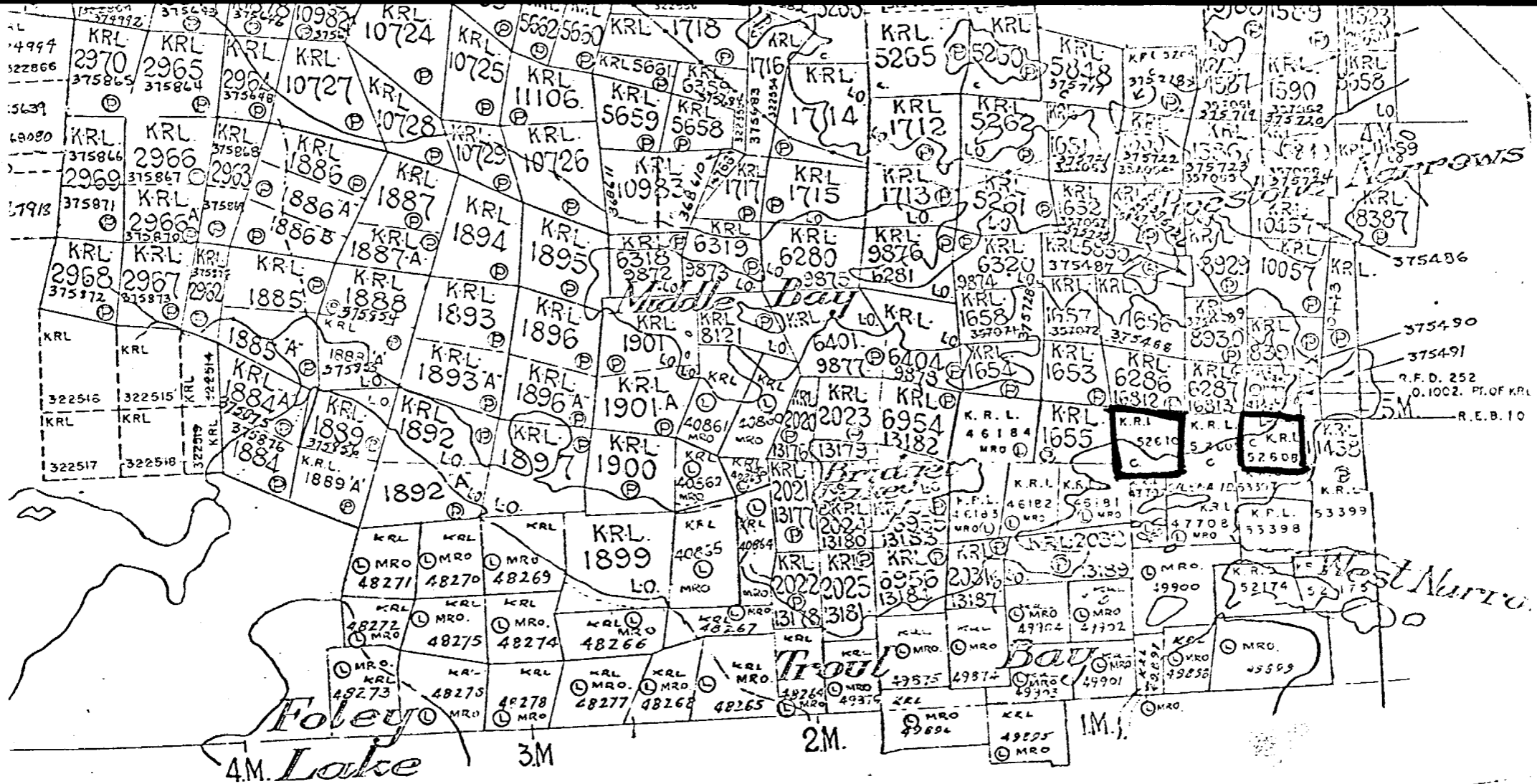
0100 000

DIAMOND DRILL RECORD - COCHENOUR EXPLORATIONS LTD.

HOLE NO.		BEARING	LAT.	DATE START		LOGGED BY	
PROPERTY:		DIP	DEP.	COMPLETED			
CORE SIZE:		ELEV.	DEPTH:	SECTION ____ TO ____		DATE:	
DEPTH		SAMPLES			ASSAYS		
FROM	TO	GEOLOGICAL DESCRIPTION	NO	FROM	TO	WIDTH	GRAPHIC LOG
68.0	107.0	Quartz carbonate stringers and veinlets at 90.0'; 3" white quartz vein, few pyrite at 97.0, quartz alteration. Ground core at 82.0 - 83.7 89.0 - 90.0 98.0 - 99.3					<div data-bbox="1860 500 2236 738" data-label="Image"> <p>RECEIVED RED LAKE MINING DIV. JUN 20 1967 7:23 AM</p> </div>
107.0	109.0	Silicified section, of above material.					
109.0	127.0	Talcose, fine grained, greater percentage of quartz and carbonate alteration - white quartz vein 4" at 124.0 - 124.4					
		End of Hole.					

450 0011

200 0836



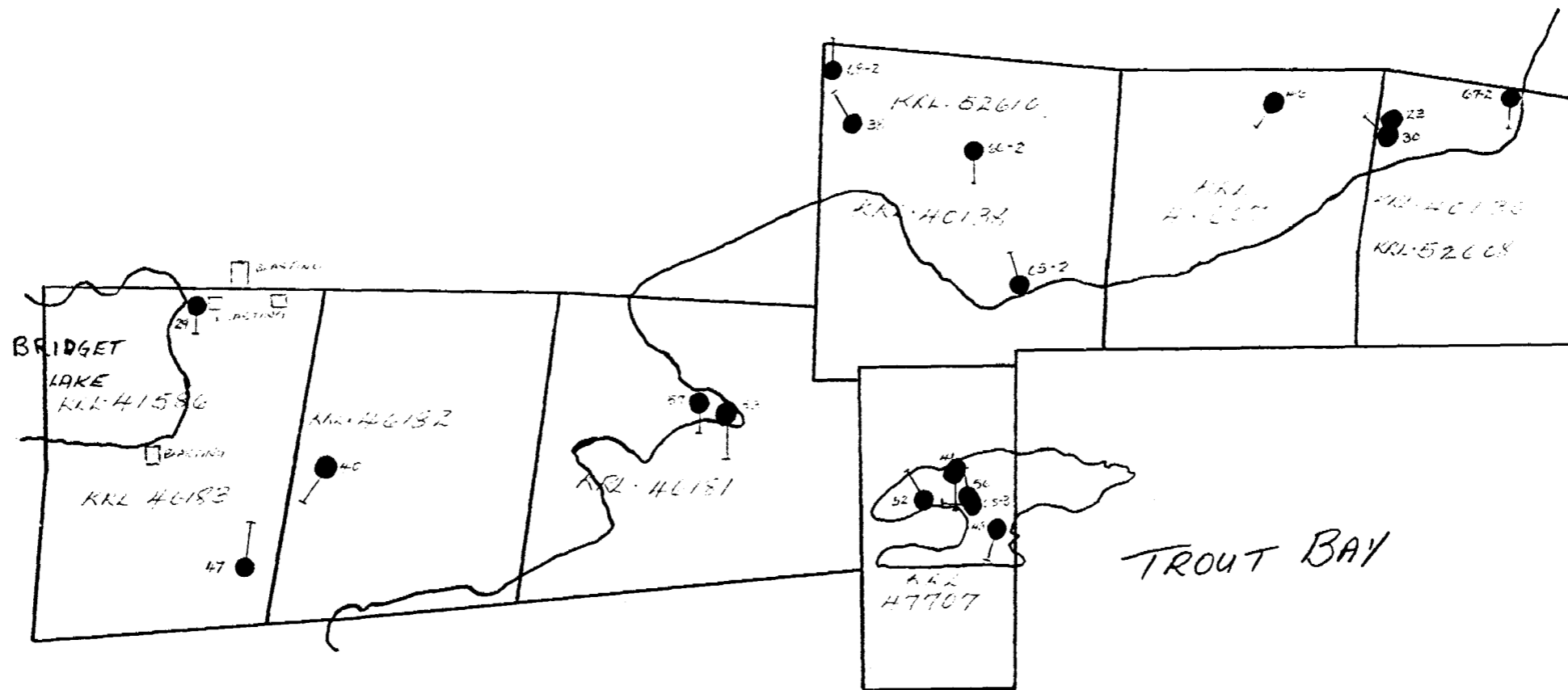
MULCAHY

Ball Twp. M. 2136

NOTES

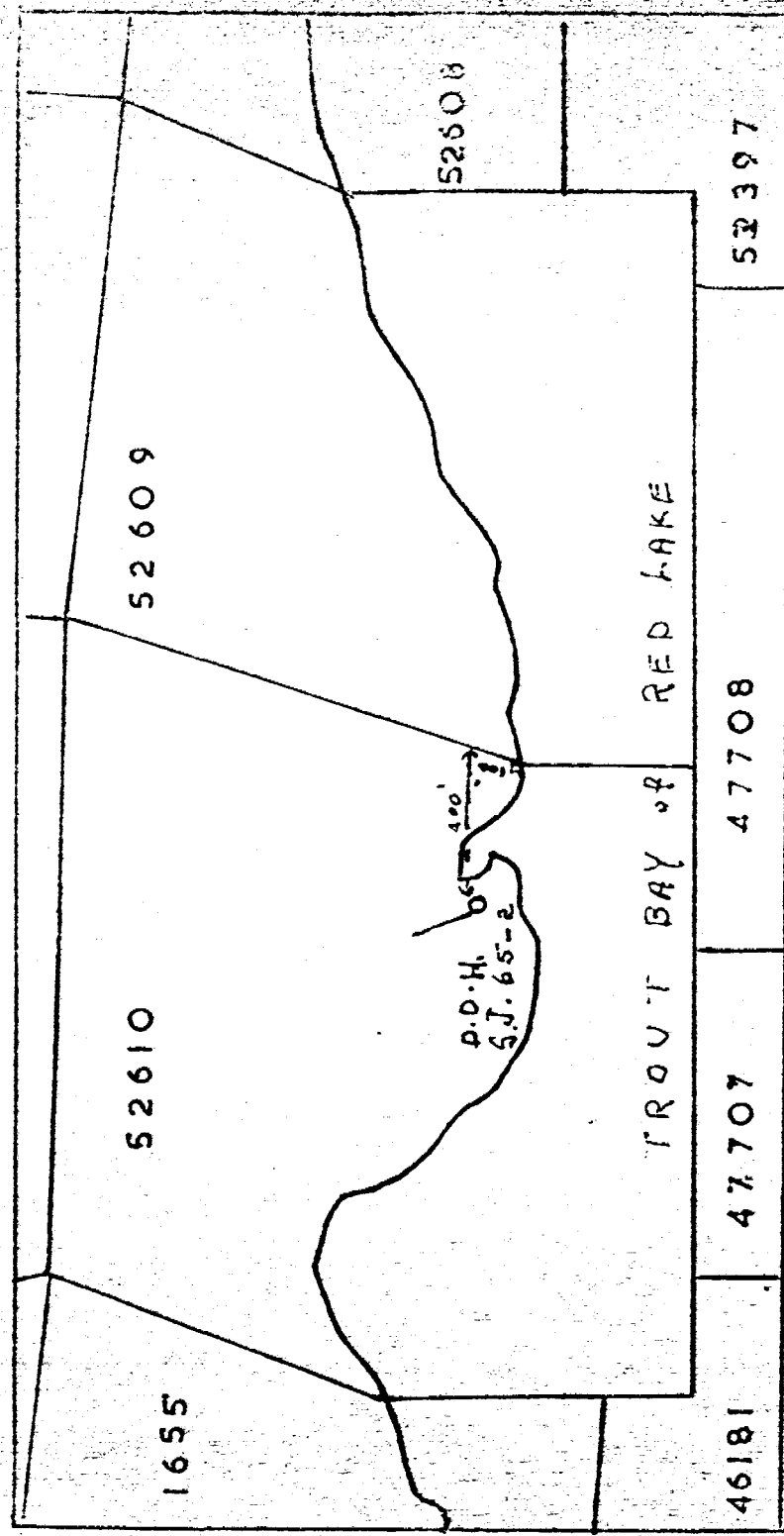
400' surface rights reservation along the shores of all lakes and rivers.





2000 08/16/01

See map



SECTION D.D.H. 65-2

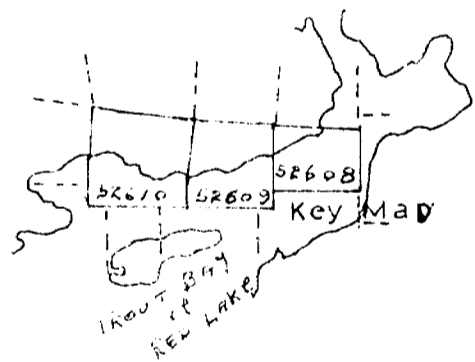
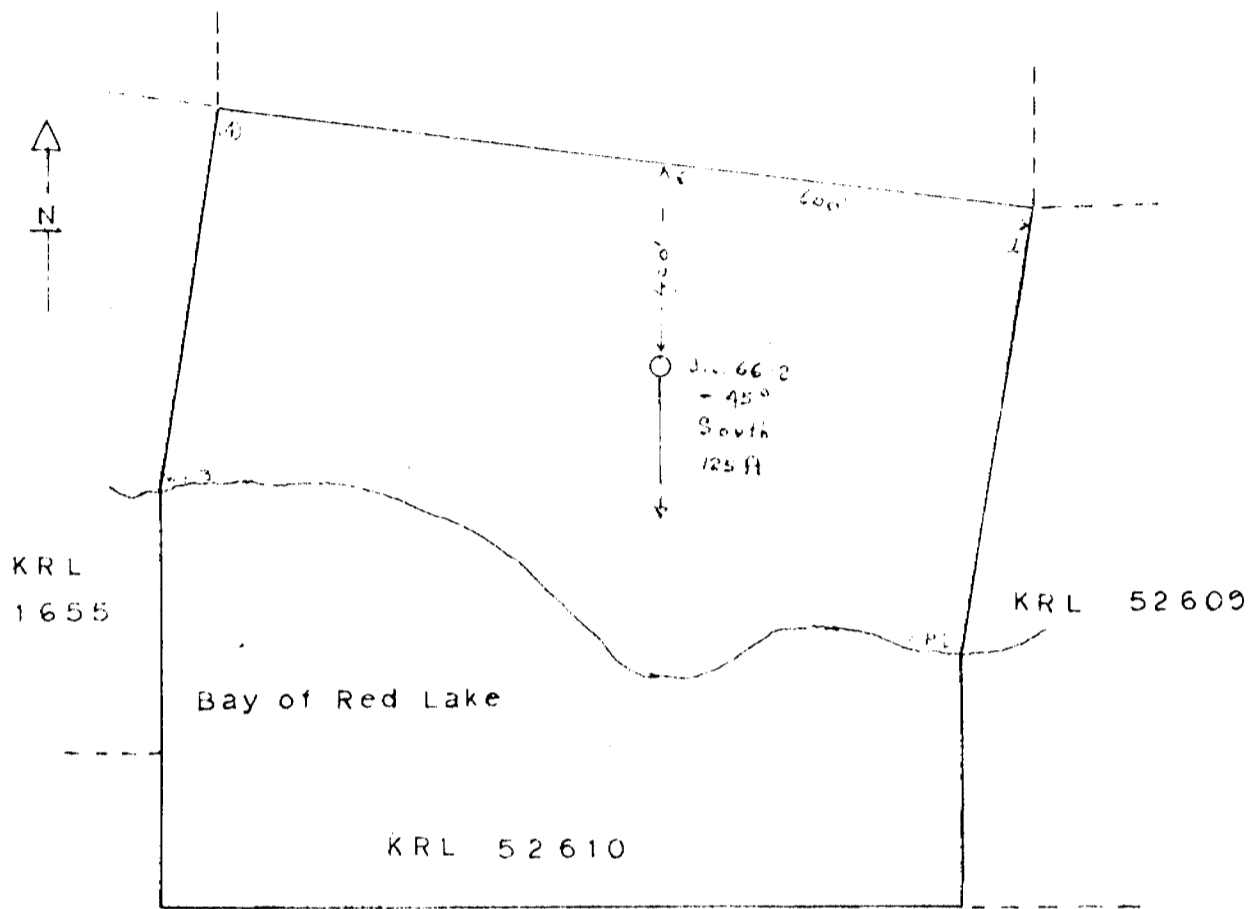
GREY LAVA CARBONATED
SILICIFIED
BRECCIATED

DIKE QTZ PORPHYRY

DIP - 44°
BEARING N 40° W.
DEPTH 123'
CLAIM KRL 52610

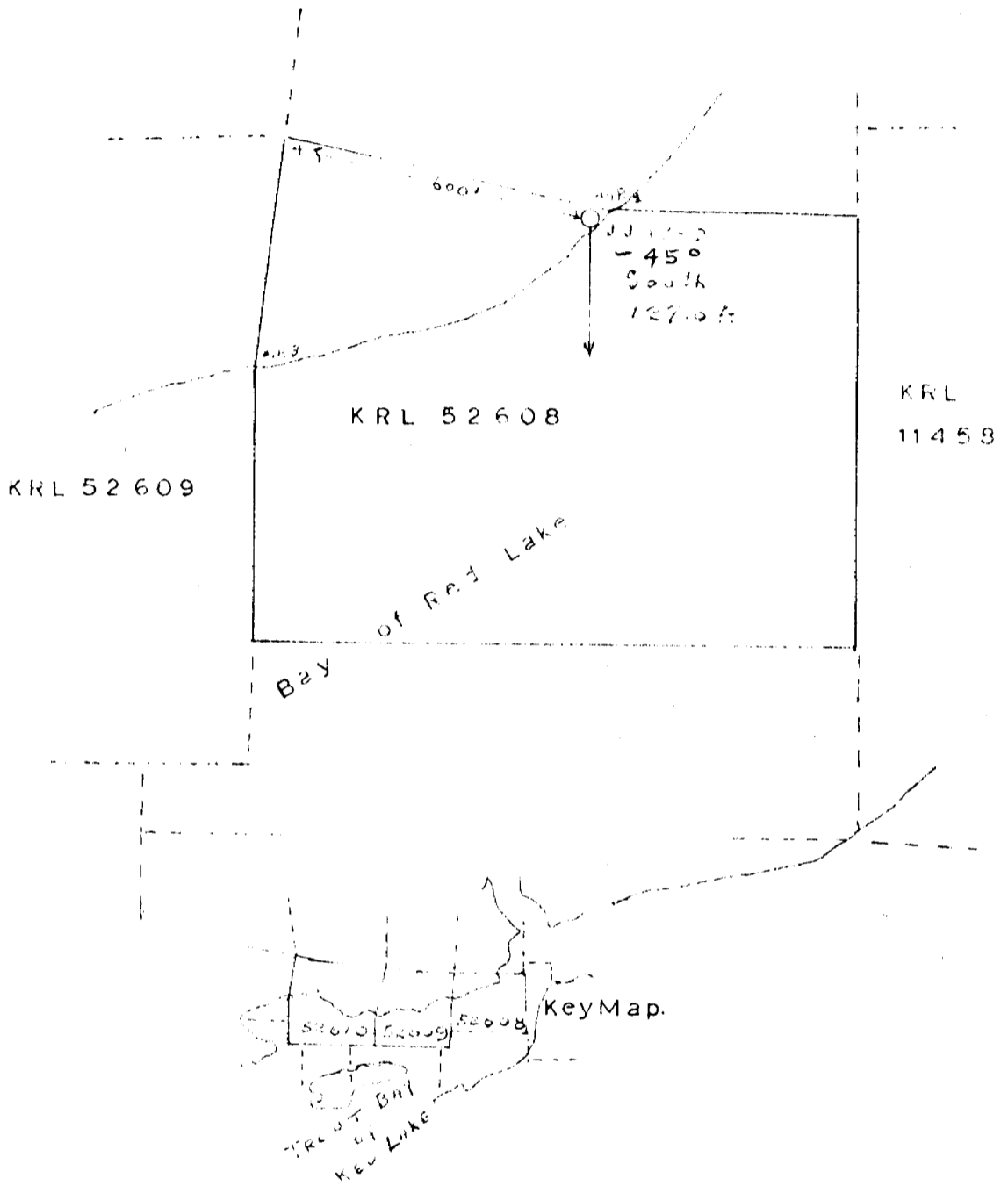
← LOCATION SKETCH

RED LAKE
MINING DIV.
RECEIVED
JUL 6 1965
AM 7 8 9 10 11 12 1 2 3 4 5 6 PM



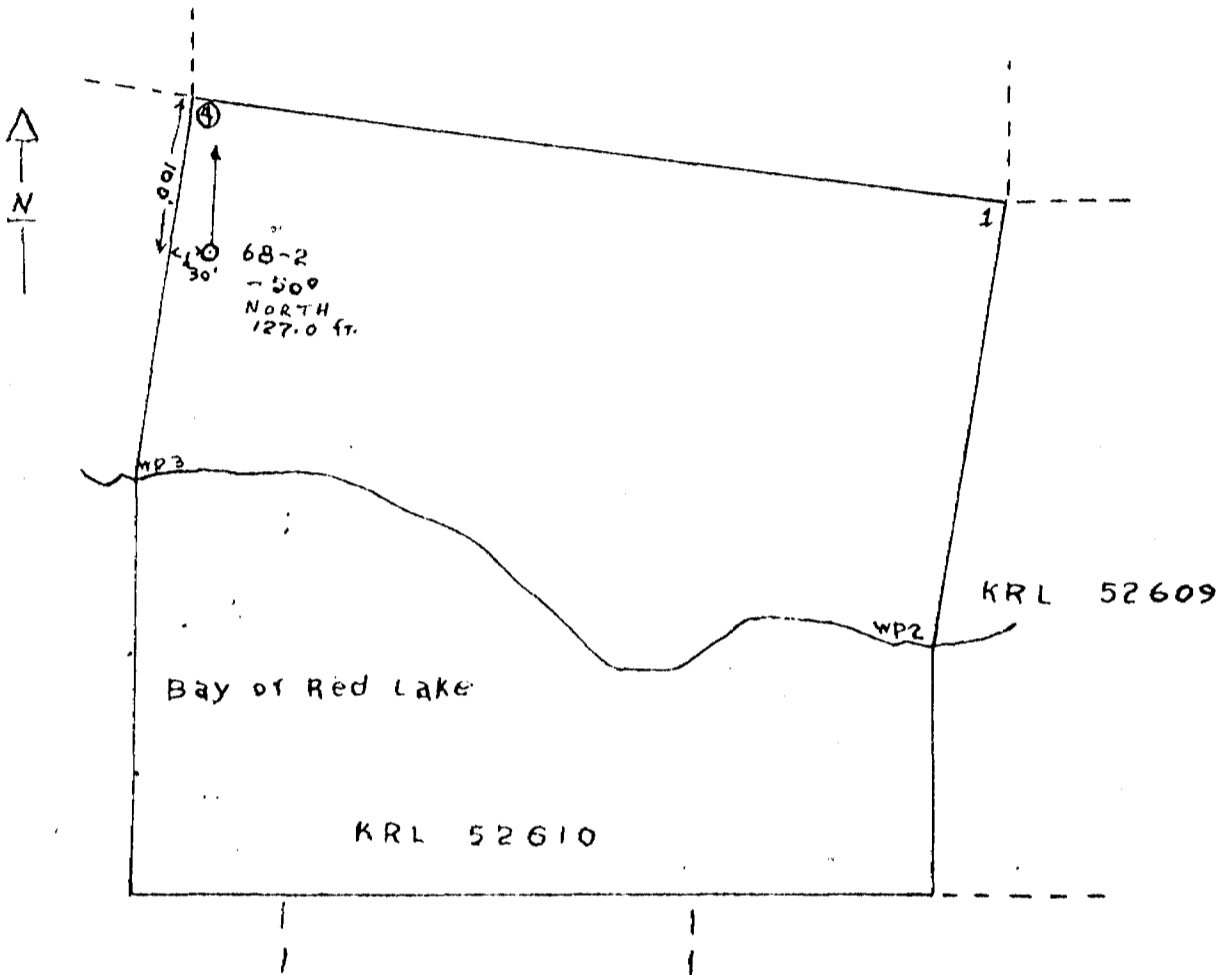
J Johnson Group
 Ball Twp
 Drill Hole Location Sketch
 DD Hole J.J. 66-2

RED LAKE
 MINING DIV.
RECEIVED
 JUN 30 1967
 AM 7 8 9 10 11 12 1 2 3 4 5 6 PM



J. Johnson Group.
Ball Twp.
Drillhole Location Sketch.
D. D. Hole, JJ 67-2





Stupack-Johnson Group
 Ball Twp.
 Drill Hole Location Sketch
 DD Hole SJ, 68-2



200 0000