



52N01SE0126 10 HAMMELL LAKE

010

Diamond Drilling

Area Hammell Lake (Todd Twp.)

Report N<sup>o</sup> 10

Work performed by: McKenzie Red Lake Mines Limited

Claim N <sup>o</sup>	Hole N <sup>o</sup>	Footage	Date	Note
KRL 58539	MBG 69-1	175.0'	Apr/69	
KRL 58537	MBG 69-2	340.0'	Apr/69	

Notes:

REPORT # 10

Todd Twp sheet No. 36

AIKEN-RUSSET RED LAKE MINES LIMITED  
MCKENZIE RED LAKE GOLD MINES LTD  
MARTIN'S BAY GROUP  
DIAMOND DRILL CORE LOG

Martin's Bay Group

COLLAR CO-ORDINATES Location KRL 58540 Section \_\_\_\_\_  
 LAT 580° S-Nc.4P DEP 490° E-No.4P HOLE NO. MBG 69-1 TOTAL DEPTH 175'  
 ELEVATION \_\_\_\_\_ SHEET NO. 1 of 2 FT. RECOVERED \_\_\_\_\_  
 AZIMUTH 330° DIP -49°30' DATE BEGUN April 14, 1969 % RECOVERY \_\_\_\_\_  
 HOR. \_\_\_\_\_ VERT \_\_\_\_\_ DATE FINISHED April 16, 1969 SIZE BIT "A"

DEPTH FEET	FORMATION	SAMPLE NO.	OZ AU PER TON	VALUE PER TON	AVGS	SLUDGES			
						SAMP.NO.	FROM	OZ.AU	VALUE
0									
12.0	Casing								
12.0 24.4	Medium to fine grained, dark gray to black Gabbro. Massive, except for occasional very small (1/8") quartz carbonate filled fractures.								
24.4 26.3	Lightly sheared Gabbro. Considerable chlorite & light talc alteration. 4% quartz carbonate in very tiny stringers. No Sulphides.								
26.3 85.0	Gabbro, similar to section 12.0 to 24.4								
85.0 97.2	Lightly sheared Gabbro. Shearing @ 50° to core. Talcose & chloritic throughout, with section 94.4 to 97.2 highly chloritic. 3% quartz carbonate in tiny stringers. Few traces py & pyr in some stringers.								
97.2 117.0	Talc Schist. Dark gray, streaked with light gray. Sheared at 55° to core. Considerable granular carbonate throughout, and some carbonate filled fractures.								
117.0 119.5	Continuation of above Talc Schist, with three tiny quartz carbonate stringers containing some pyr & chalco. @ 118.0': 1/4" strgr with 2% chalco @ 118.3': 1/4" strgr with 2% chalco @ 119.1': 1/8" strgr trace chalco								
	<u>117.0-119.5</u> 906								
119.5 120.5	Black, altered Gabbro. Crystals blurred. Light granular carbonate throughout. Not talcose.								

RESIDENT GEOLOGIST'S COPY

RED LAKE MINING DIV.  
RECEIVED  
APR 29 1969  
AM 10:00

Continued on Sheet No. 2

AWPL

LOG BY

*A. Watt*  
A. Watt

AIKEN-RUSSET RED LAKE MINES LIMITED  
 MCKENZIE RED LAKE GOLD MINES LTD.  
 MARTIN'S BAY GROUP  
 DIAMOND DRILL CORE LOG

COLLAR CO-ORDINATES Location \_\_\_\_\_ Section \_\_\_\_\_  
 LAT \_\_\_\_\_ DEP \_\_\_\_\_ HOLE NO. MBG 69-1 TOTAL DEPTH \_\_\_\_\_  
 ELEVATION \_\_\_\_\_ SHEET NO. 2 of 2 FT. RECOVERED \_\_\_\_\_  
 AZIMUTH \_\_\_\_\_ DIP \_\_\_\_\_ DATE BEGUN \_\_\_\_\_ % RECOVERY \_\_\_\_\_  
 HOR. \_\_\_\_\_ VERT \_\_\_\_\_ DATE FINISHED \_\_\_\_\_ SIZE BIT \_\_\_\_\_

DEPTH FEET	FORMATION	SAMPLE NO.	OZ AU PER TON	VALUE PER TON	AVGS	SLUDGES			
						SAMP.NO.	FROM	OZ.AU	VALUE
120.5 122.0	Continuation of previous black, altered Gabbro. Two, tiny quartz carbonate stringers. Stringers contain some pyr & chalco, none in gabbro. @ 120.7': 1/8" strgr, trace chalco @ 121.6': 1/8" strgr, 5% chalco & trace pyr <u>120.5-122.0</u>	907							
122.0 141.9	Continuation of black, altered Gabbro. Crystals obliterated. Light granular carbonate disseminated throughout.								
141.9 175.0	Talc Schist. Streaked with light & dark gray. Considerable granular carbonate and high talc throughout. Parts of core are sufficiently magnetic to slightly swing compass needle. 1/8" quartz carbonate stringer @ 161' containing 1% chalco. Two hairline fractures with some pyrrhotite, no other sulphides.								
175.0	End of Hole.								

RED LAKE MINING DIV.  
 RECEIVED  
 APR 2 1969  
 AM 12:24 PM 5:50

AWPL

LOG BY Awatt

AIKEN-RUSSET RED LAKE MINES LIMITED  
 MCKENZIE RED LAKE GOLD MINES LTD.  
 Martin's Bay Group  
 DIAMOND DRILL CORE LOG

Martin's Bay Group

COLLAR CO-ORDINATES Location KRL 58538 Section \_\_\_\_\_  
 LAT 250°N of No. 3 DEP 490°E of No. 3 HOLE NO. MBG 69-2 TOTAL DEPTH 340'  
 ELEVATION \_\_\_\_\_ SHEET NO. 1 of 2 FT. RECOVERED \_\_\_\_\_  
 AZIMUTH 340° DIP -40° DATE BEGUN April 17, 1969 % RECOVERY \_\_\_\_\_  
 HOR. \_\_\_\_\_ VERT \_\_\_\_\_ DATE FINISHED April 21, 1969 SIZE BIT "A"

DEPTH FEET	FORMATION	SAMPLE NO.	OZ AU PER TON	VALUE PER TON	AVGS	SLUDGES			
						SAMP. NO.	FROM	OZ. AU	VALUE
0 16.0	Casing								
16.0 32.1	Black, fine grained Gabbroic material. Some sections show approx. 30% blurred feldspar crystals in a black mafic background. Massive, with only a few joint-like fractures. No pillow rims. Occasional trace of fine disseminated pyrrhotite.								
32.1 37.0	Greenish gray Schist. Fairly talcosa, some chloritic material & granular carbonate. Few tiny calcite stringers. No sulphides.								
37.0 135.0	Black, fine grained Gabbroic material. Traces of serpentine alteration in places. Massive, very few fractures. Few traces pyrrhotite in places. @ 69.0' small 3" carbonate stringer, with traces pyrr & chalco. @ 56.2' 1/16" pyrr. fracture. @ 72.1' 1/8" bleb pyrr. @ 97.1' Speck chalco.								
135.0 154.0	Continuation of above, with a little more fracturing. Fractures at average 40° to core, and are filled with quartz carbonate, and show some serpentinization.								
154.0 165.4	Talc Schist. Shearing @ 70° to core.								
165.4 204.1	Black, fine grained Gabbroic material. Slightly mottled with tiny, blurred feldspar crystals. Few irregular quartz carbonate filled fractures.								
204.1 205.0	Talc Schist. Shearing at 80° to core.								
AWPL									

RESIDENT GEOLOGIST'S COPY

RED LAKE MINING DIV.  
 RECEIVED  
 APR 29 1969  
 ALL INFORMATION CONTAINED HEREIN IS UNCLASSIFIED

LOG BY         C. W. Math

AIKEN-RUSSET RED LAKE MINES LIMITED  
MCKENZIE RED LAKE GOLD MINES LTD.  
Martin's Bay Group  
DIAMOND DRILL CORE LOG

COLLAR CO-ORDINATES \_\_\_\_\_ Location \_\_\_\_\_ Section \_\_\_\_\_  
 LAT \_\_\_\_\_ DEP \_\_\_\_\_ HOLE NO. MBG 69-2 TOTAL DEPTH \_\_\_\_\_  
 ELEVATION \_\_\_\_\_ SHEET NO. 2 FT. RECOVERED \_\_\_\_\_  
 AZIMUTH \_\_\_\_\_ DIP \_\_\_\_\_ DATE BEGUN \_\_\_\_\_ % RECOVERY \_\_\_\_\_  
 HOR. \_\_\_\_\_ VERT \_\_\_\_\_ DATE FINISHED \_\_\_\_\_ SIZE BIT \_\_\_\_\_

DEPTH FEET	FORMATION	SAMPLE NO.	OZ AU PER TON	VALUE PER TON	AVGS	SLUDGES		
						SAMP.NO.	FROM	OZ.AU VALUE
205.0	Dark gray Granodiorite Dyke.							
208.6	Contact @ 208.6' is 40° to core.							
208.6	Contact @ 205.0' is 60° to core.							
291.6	Dark, fine grained Gabbroic material. Some sections show slight mottling from tiny, blurred feldspar crystals. Massive, very little fracturing.							
291.6	Grayish carbonated Shear. Shearing @ 80° to core. Few tiny carbonate stringers with traces pyr & chalco. Few smears of chalco along shear planes in places.							
292.2	<u>291.6 - 292.2</u> 908							
292.2								
340.0	Black, fine grained Gabbroic material. Occasional phase shows slight mottling from tiny, blurred feldspar crystals. Very few, small quartz carbonate filled fractures. Traces pyrrhotite along some slips, and a few small sections show slight pyr sparsly disseminated.							
340.0	End of Hole.							

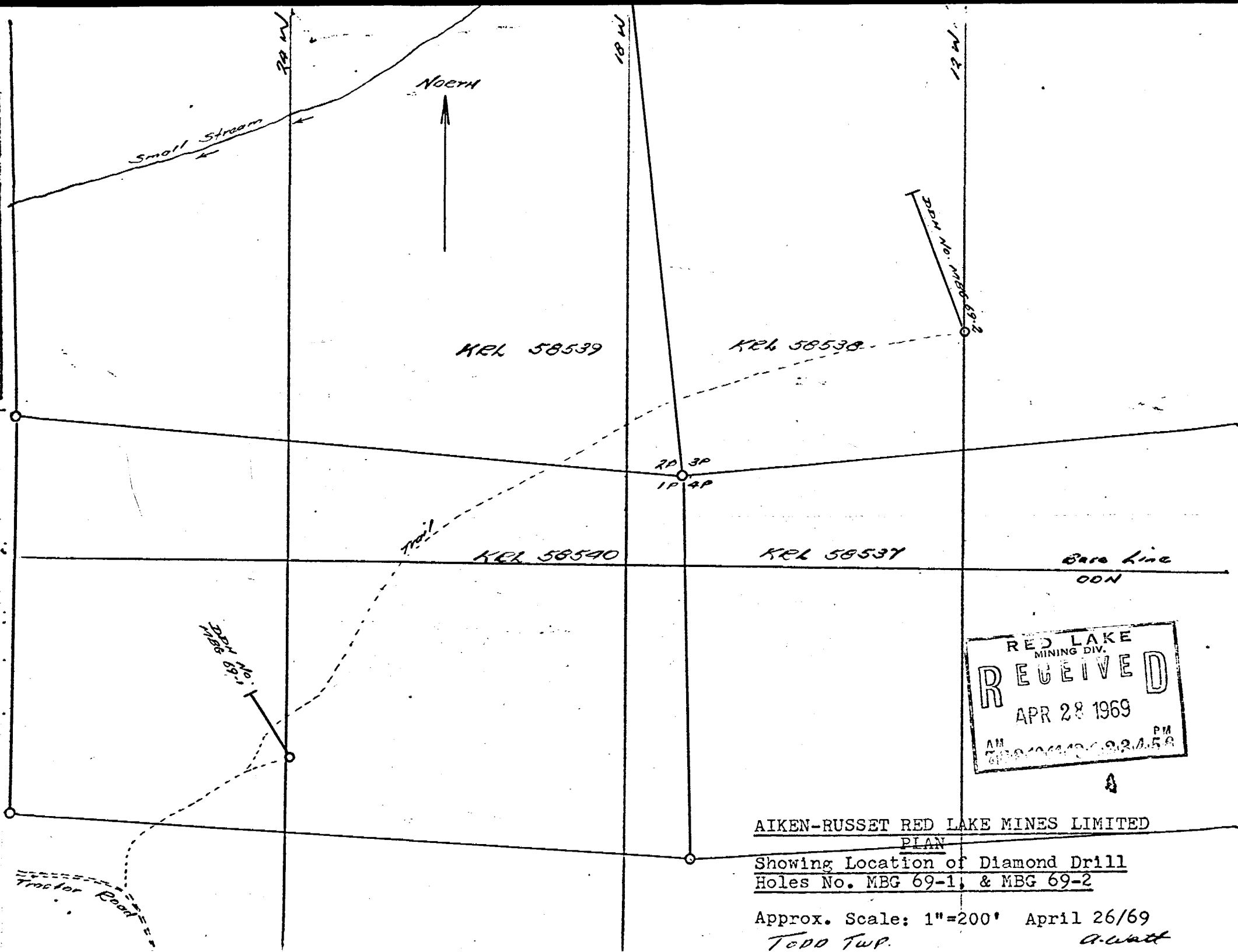
RED LAKE MINING DIV.  
RECEIVED  
APR 28 1969  
PM

LOG BY A. Watt



52N015E0126 10 HAMMILL LAKE

900



RED LAKE  
MINING DIV.  
**RECEIVED**  
APR 28 1969  
AM 10:00 PM 10:50

AIKEN-RUSSET RED LAKE MINES LIMITED  
PLAN  
Showing Location of Diamond Drill  
Holes No. MBG 69-1, & MBG 69-2

Approx. Scale: 1"=200' April 26/69  
Tedd Twp. A. Watt