



52N07SW0007 11 SHABU LAKE

010

Diamond Drilling

Area of Shabu Lake

Report N^o 11

Work performed by: Madsen Red Lake Gold Mines Ltd.

Claim N ^o	Hole N ^o	Footage	Date	Note
KRL. 55771	Shabu #1	516'	Mar/67	
	Shabu #2	403'	Apr/67	
KRL. 55791	Shabu #3	423'	Apr/67	
	Shabu #4	402'	Apr/67	
	Shabu #9	200'	June/67	
	Shabu #10	200'	June/67	
KRL. 55778	Shabu #5	356'	June/67	
	Shabu #6	257'	June/67	
	Shabu #7	357'	June/67	
	Shabu #8	256'	June/67	

Notes:

Logged by

Shabu Lake
E. G. Cameron

Chief geologist

MADSEN RED LAKE GOLD MINES LIMITED

RED LAKE
MINING DIV.
RECEIVED
APR 19 1967
AM 10 11 12 13 4 5 6 PM

DIAMOND DRILL REPORT

HOLE NO. Shabu # 1
STRIKE North 88° E
DIP - 45°
DEPTH 516.00

STARTED March 25 / 67
FINISHED April 6 / 67

LOCATION KRL 55771
DEPARTURE 0 + 40 South
LATITUDE 2 + 00 West
ELEVATION ice level.

N.M.P.

DEPTH		DESCRIPTION	ASSAY	
FROM	TO		No.	Oz. Au
0.00	25.00	0.00 - 3.00 ICE 3.00 - 17.00 Water 17.00 - 25.00 Bottom sediments , silts.		
25.00	50.00	silt , sand.		
50.0	75.00	sand , gravel few boulders, 64.00 - 75.00 Fine grained light grey limestone.		
75.00	100.00	Fine grained medium grey limestone , core angle 30°		
		75.00 100.00		N.
100.00	125.00	85.00 - 86.00 O. N. M. sample Limestone as above ; Morite dike , some mica (biotite) very little pyrite and pyrrhotite 120.8 Morite dike 117.00 - 120.80		
		100.00 125.00		N.
125.00	150.00	Limestone , crystalline calcite 140.00 - 150.00 Core angle at 137.50 45 degrees		
		125.00 150.00		N.
150.00	175.00	Crystalline calcite , medium grained dark grey to greenish diabase dike 163.80 - 167.60		
		150.00 175.00		N
175.00	200.00	Crystalline and limestone , diorite dike with small biotite micas 179.00 181.10		
		175.00 200.00		N
200.00	225.00	Dark grey limestone , crystalline calcite 216.20 - 225.00 few small seams pyrrhotite		
		200.00 225.00		N.
225.00	250.00	Light grey crystalline limestone , medium py rite , heavy pyrrhotite 233.30- 234.50 and 242.80 , 247.50		

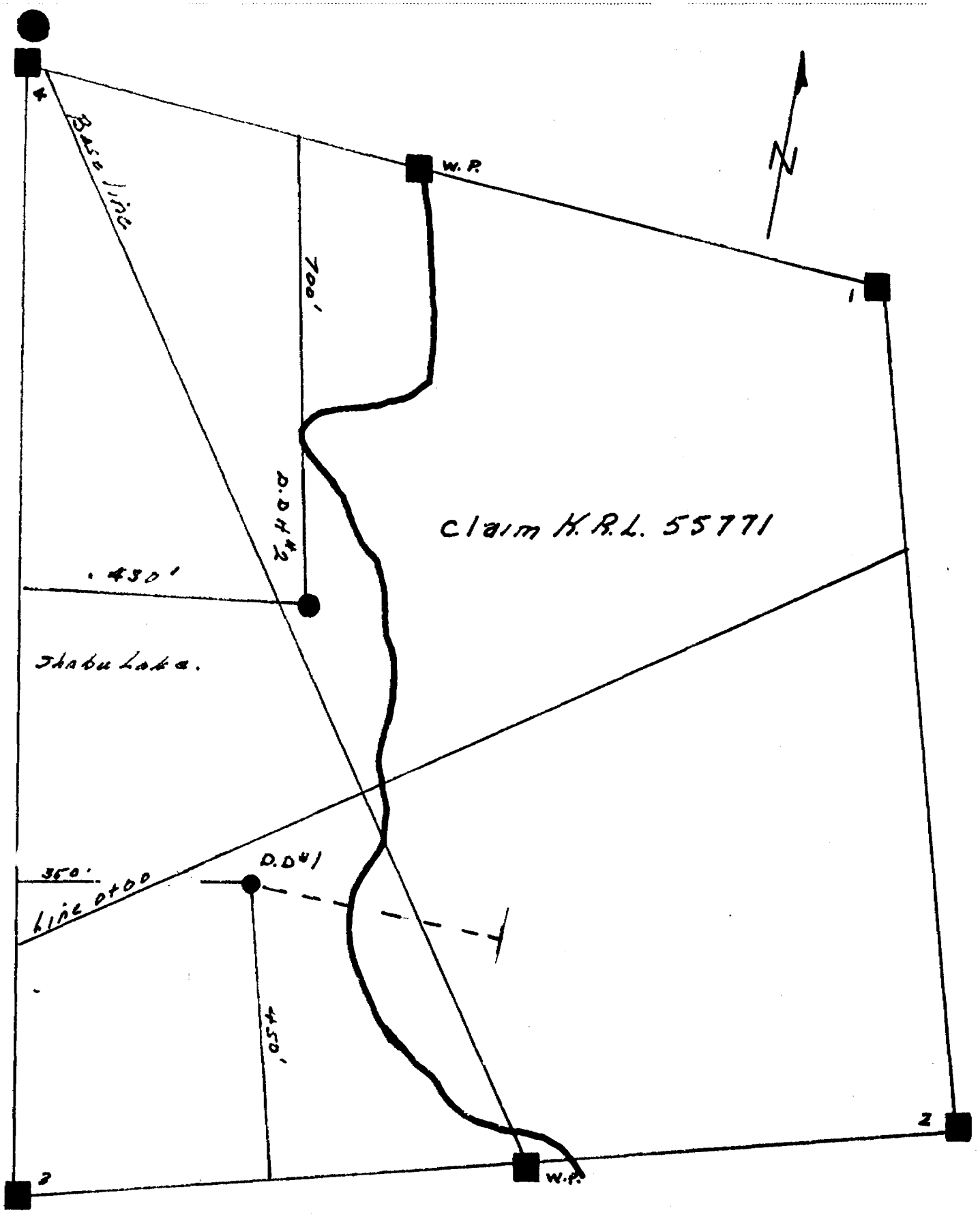
DEPTH		DESCRIPTION	ASSAY	
From	To		No.	Oz. Au.
225.00	250.00			
		225.00 - 233.50		N.S.
		233.50 - 234.50	477	
		234.50 - 242.50		N.S.
		242.50 - 245.00	8	
		245.00 - 247.50	9	
		247.50 - 250.00		N.S.
250.00	275.00	White to grey limestone : Dark green quartz 250.00 - 262.5 White quartz 264.20- 265.50 , 266.10 - 267.70 271.5 - 273.00 , 273.4 - 275.00		
		250.00 - 255.00	498	
		255.00 - 260.00	8	
		260.00 - 262.50	4	
		262.50 - 264.50	5	
		264.50 - 265.50	6	
		265.50 - 266.10	7	
		266.10 - 267.70	8	
		267.70 - 270.00	9	
		260.00 - 271.50	300	
		271.50 - 273.00	1	
		273.40 - 275.00	2	
275.00	300.00	Light grey limestone medium to massive pyrite and pyrrhotite 295.40 - 297.40 light to medium cubic		
		275.00 - 277.50	304	
		277.50 - 295.40	N.S.	
		295.40 - 297.40	5	
		297.40 - 298.70	6	
		298.70 - 300.00	7	
300.00	325.00	Light grey limestone , medium green fine grained like black minerals elongated at 30 degrees to the core like 311.50 - 313.50 , 316.50 - 319.50 heavy pyrite and pyrrhotite 313.50 - 316.50 and 324.50 - 325.00		
		300.00 - 313.50		N.S.
		313.50 - 316.50	308	
		316.50 - 324.50	9	N.S.
		324.50 - 325.00	9	
325.00	350.00	Fine grained limestone massive pyrite , pyrrhotite 325.00 - 325.50 341.50 - 346.50		
		325.00 - 325.50	310	
		325.50 - 341.50		N.S.
		341.50 - 343.50	1	
		343.50 - 346.50	2	
		346.50 - 350.00		N.S.
350.00	375.00	Gray to white limestone G.A. 30 degrees slight pyrrhotite 350.00 - 350.50 and 371.00		
		350.00 - 375.00		N.S.

N.M.P.-H 2298

DEPTH		DESCRIPTION	ASSAY	
From	To		No.	Oz. Au.
375.00	400.00	Grey to white limestone like 375.00 - 375.80 white slightly glassy quartz 397.80 - 398.60 massive pyrrhotite 398.60 - 400.00 375.00 - 397.80 397.80 - 398.60 398.60 - 400.00	513 4	N.S.
400.00	425.00	Grey to white limestone, massive pyrite and pyrrhotite 407.10 - 408.80 massive pyrrhotite 408.80 - 410.80 400.00 - 407.10 407.10 - 408.80 408.80 - 410.80 410.80 - 425.00	515 6	N.S. N.S.
425.00	450.00	Light grey limestone, faint banding in places core angle 30 degrees, seam of pyrrhotite along one half of the core from 438.70 - 439.00 425.00 - 438.70 438.7 - 438.80 438.80 - 439.00 439.00 - 450.00	517 8	N.S. N.S.
450.00	475.00	Crystalline limestone, Dark grey to black with light round grains, black shreds, heavily mineralized pyrite and pyrrhotite, faint banding 458.90 - 475.00 medium pyrite pyrrhotite 454.00 - 456.00 little pyrite 458.40 - 458.40 458.80 - 460.60 - 462.40 - 463.50 heavy massive pyrite 466.80 - 467.80 medium 467.8 - 468.90 450.00 - 454.00 454.00 - 456.00 456.00 - 458.80 458.80 - 460.60 460.60 - 462.40 462.40 - 463.50 463.50 - 466.80 466.80 - 467.80 467.80 - 468.90 468.90 - 470.00 470.00 - 475.70 475.70 - 475.00	519 20 1 2 3 4 5 6	N.S. N.S. N.S. N.S.
475.00	500.00	Crystalline limestone, dark grey to black, heavy pyrite similar to preceding 475.00 - 476.00 massive pyrite 478.50 - 480.80 massive pyrite and pyrrhotite 485.80 - 491.70, 494.10 - 496.00 and 497.00 - 500.00		

N.M.P.-H 2298

DEPTH		DESCRIPTION	ASSAY	
M	To		No.	Oz. Au.
		475.00 - 476.00	827	
		476.00 - 478.80		N.S.
		478.80 - 480.30	8	
		480.30 - 485.80		N.S.
		485.80 - 488.70	9	
		488.70 - 491.70	30	
		491.70 - 494.10	1	
		494.10 - 495.00	8	
		495.00 - 496.00		N.S.
		496.00 - 500.00	8	
500.00	516.00	light grey , banded light and dark in places grading to rhyolitic core angle 48 degrees , mineralized fine pyrite ; 510.00 - 518.00 dark grey porphyritic (feldspars light grey) fine grained mineralized with pyrite and pyrrhotite , massive pyrite 500.00 - 516.00		
		500.00 - 504.80	834	
		504.80 - 505.00		N.S.
		505.00 - 507.80	8	
		507.80 - 516.00		N.S.
		END OF HOLE		
		(HOLE CEMENTED)		



Scale 1" = 200'

Logged by *[Signature]*
MADSEN RED LAKE GOLD MINES LIMITED

RED LAKE MINING DIV.
RECEIVED
 Chief geologist
 APR 19 1967
 AM 7:18 PM 12:34:56

DIAMOND DRILL REPORT

HOLE NO. **SHAHU # 2** LOCATION **KM. 55771**
 STRIKE **N 88 E** STARTED **April 7 / 67** DEPARTURE **line 280 N**
 DIP **-45** FINISHED **April 9 / 67** LATITUDE **40 E**
 DEPTH **403.0** ELEVATION **Ice level**

N.M.P.

DEPTH		DESCRIPTION	ASSAY	
FROM	TO		No.	Oz. Au
0.0	25.0	0.0 - 15.0 Water		
25.0	50.0	15.0 - 25.0 Bottom sediments, silts. sand and gravel.		
50.0	75.0	25.0 - 50.0 light grey crystalline limestone to 47.0, deep blue 47.0 - 50.0 few small stringers pyrite.		N.S.
75.0	100.0	35.0 - 50.0 Dike fine grained dark green, few oriented black micas c.a. 30 degrees limestone 50.0 - 52.8 71.5 - 74.6		N.S.
100.0	125.0	50.0 - 75.0 Medium grey limestone slight banding c.a. 30 degrees dike as above 75.0 - 76.3 75.0 - 100.0		N.S.
		light grey limestone, quartz stringers 100.0 - 102.0 105.6 - 107.3		
		100.0 - 102.0	625	
		102.0 - 105.6	6	N.S.
		105.6 - 107.3	6	N.S.
		107.3 - 125.0		
125.0	150.0	Grey massive limestone		N.S.
150.0	175.0	125.0 - 150.0 Grey limestone some crystalline limestone		N.S.
150.0	175.0	125.0 150.0 Light grey limestone small stringers pyrite and pyrrhotite		
175.0	200.0	193.4 175.0 - 200.0		N.S.
175.0	200.0			
200.0	225.0	Light grey limestone medium pyrite and pyrrhotite 204.0 - 205.0, 208.7 - 211.2 slight pyrite 215.0 - 218.7, 220.5		
		200.0 - 204.0		N.S.
		204.0 - 205.0	627	
		205.0 - 208.7		N.S.
		208.7 - 211.2	8	N.S.
		211.2 - 215.0		
		215.0 - 218.7	9	N.S.
		218.7 - 220.5	30	
		220.5 - 225.0		N.S.

N.M.P.-H 2298

DEPTH		DESCRIPTION	ASSAY	
From	To		No.	Oz. Au.
225.0	250.0	Crystalline limestone few darker bands @ 230.2 e.a. 50 degrees medium pyrite and pyrrhotite 237.2 - 238.4	631	N.F.
		225.0 - 237.2		N.F.
		237.2 - 238.4 238.4 - 250.0		
250.0	275.0	Light grey crystalline limestone medium pyrite 252.8 - 253.5, 250.8 - 252.8 massive 266.4 - 274.0 light grey rhyolite 265.6 - 265.6	632	N.F.
		250.0 - 252.8		N.F.
		252.8 - 253.5		
		253.5 - 260.8		
		260.8 - 262.8		
		262.8 - 263.6		
		263.6 - 265.6		
		265.6 - 266.5		
		266.5 - 268.9		
		268.9 - 269.8		
		269.8 - 271.6		
		271.6 - 274.0	40	
		274.0 - 275.0		N.F.
275.0	300.0	light grey crystalline limestone, small stringers pyrrhotite throughout.		
		275. - 300.0		N.S.
300.0	325.0	Light grey limestone, massive pyrite some pyrrhotite 305.5 - 306.5 massive pyrite 312.4 - 312.1, medium to slightly massive pyrrhotite 323.6 - 325.0 slightly cherty, black 315.0 - 316.7, 320.0 - 321.5	641	N.S.
		300.0 - 305.4		N.S.
		305.4 - 306.5		
		306.5 - 311.4		
		311.4 - 312.4		
		312.4 - 312.0		
		312.0 - 312.6		
		312.6 - 312.1		
		312.1 - 320.0		
		320.0 - 323.6		
		323.6 - 325.0		
325.0	330.0	Limestone; faded light grey, volcanic slightly carbonated rhyolite 333.0 - 330.0 cherty light grey 331.5 - 333.0 massive to medium pyrite and pyrrhotite; medium to light pyrrhotite ----- massive pyrite, pyrrhotite 325.0 - 331.3		

HOLE NO.

Shabu # 8

SHEET NO.

RED LAKE MINING DIV.

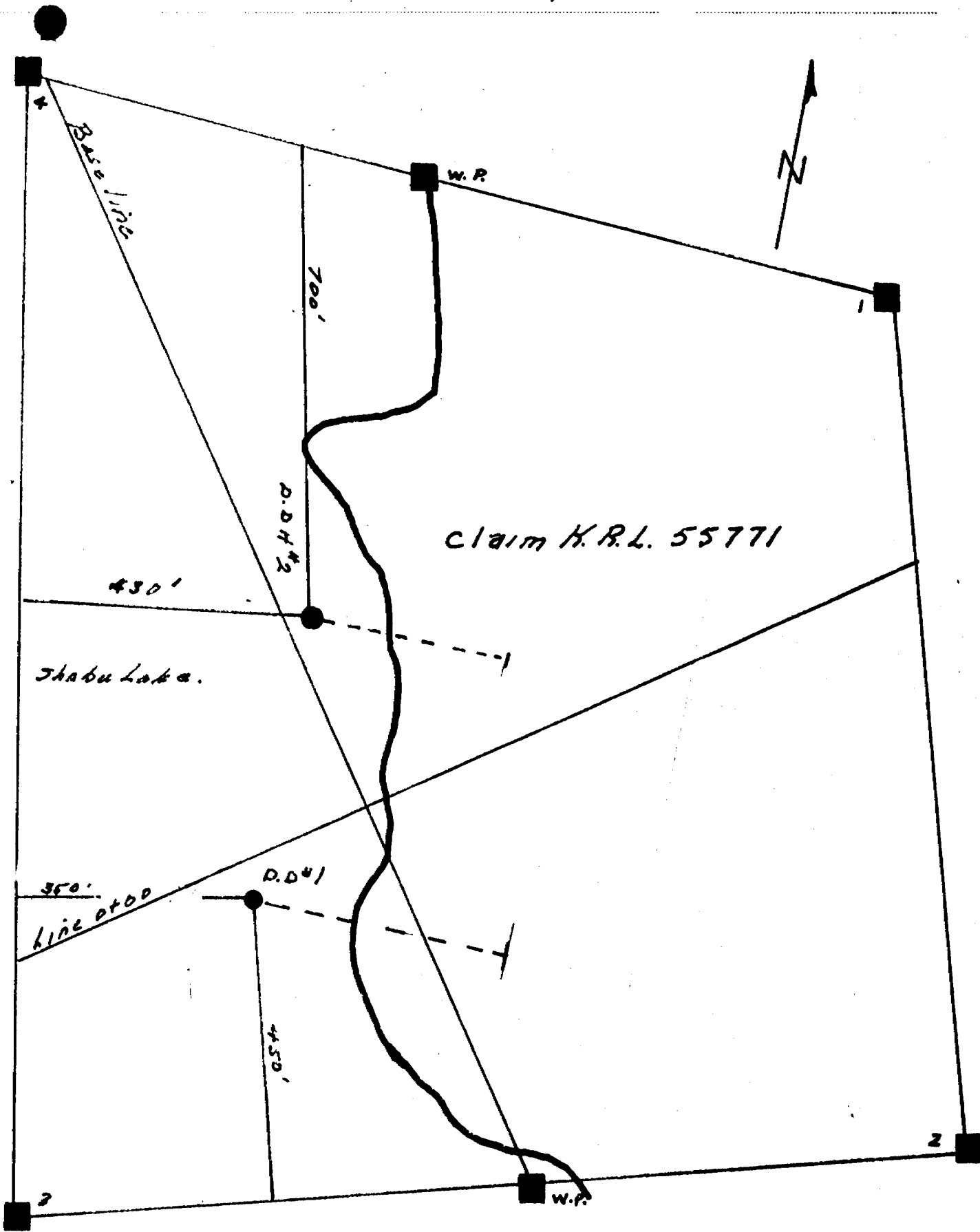
RECEIVED

N.M.P.H 2298

78970127

AM	No.	Oz. Au.p
78970127	649	23745

DEPTH		DESCRIPTION	No.	Oz. Au.p
From	To			
		326.0 - 327.8	649	
		327.8 - 330.0	50	
		330.0 - 331.8	1	N.B
		331.8 - 334.2		
		334.2 - 335.6	2	N.B
		335.6 - 350.0		
350.0	375.0	Dark grey rhyolitic , medium pyrite and pyrrhotite , fine grained. , medium pyrite and pyrrhotite 353.3 - 356.3 , medium to light pyrrhotite 370.6 - 375.0		
		350.0 - 353.3		N.B
		353.3 - 356.3	653	
		356.3 - 370.6		N.B
		370.6 - 375.0	4	
375.0	400.0	Light green volcanics , rhyolitic , carbonated , fine - grained, medium to light pyrrhotite , pyrite 375.0 - 378.8		
		375.0 - 378.8	655	
		378.8 - 400.0		N.B
400.0	403.0	Light grey rhyolite		
		400.0 - 403.0		N.B.
		493.0 End of hole.		



Scale 1" = 200'

SHABU LAKE

Holes logged by *J. J. Rawlin*

MADSEN RED LAKE GOLD MINES LIMITED

DIAMOND DRILL REPORT

HOLE NO. **Shabu # 5**
STRIKE **S 3 W**
DIP **- 45°**
DEPTH **423.0**

STARTED **April 9 / 67**
FINISHED **April 12 / 67**

LOCATION **KRL 85791**
DEPARTURE **Line 22 South**
LATITUDE **1100 west**
ELEVATION **See level**

N.M.P.

DEPTH		DESCRIPTION	ASSAY	
FROM	TO		No.	Oz. AU
0.0	25.0	Water 11.0 - 25.0 clay		
25.0	50.0	Clay 25.0 - 40.0 , 40.0 - 50.0 sand , gravel and boulders		
50.0	75.0	Light to medium green , fine grained dacite few carbonate stringers		
		50.0 - 75.0		N.E
75.0	100.0	Fine grained light grey - green dacite , few small phenocrysts quartz , few carbonate stringers.		
		75.0 - 100.0		N.E
100.0	125.0	Altered dacite , very slight banding dark and light few garnets (resembles Madsen hangingwall rock.) few silicious sections.		
		100.0 - 125.0		N.E
125.0	150.0	Altered dacite , weathering in carbonated rocks 146.0 - 150.0 , fine grained medium green slight pyrrhotite		
		125.0 - 150.0		N.E
150.0	175.0	Similar to above dacite fine grained less phenos		
		150.0 - 175.0		N.E
175.0	200.0	Fine grained dacite , considerable carbonate in stringers patches etc.		
		175.0 - 200.0		N.E
200.0	225.0	Fine grained dacite , few carbonate stringers		
		200.0 - 225.0		N.E
225.0	250.0	Fine grained dacite few carbonate stringers		
		225.0 - 250.0		N.E

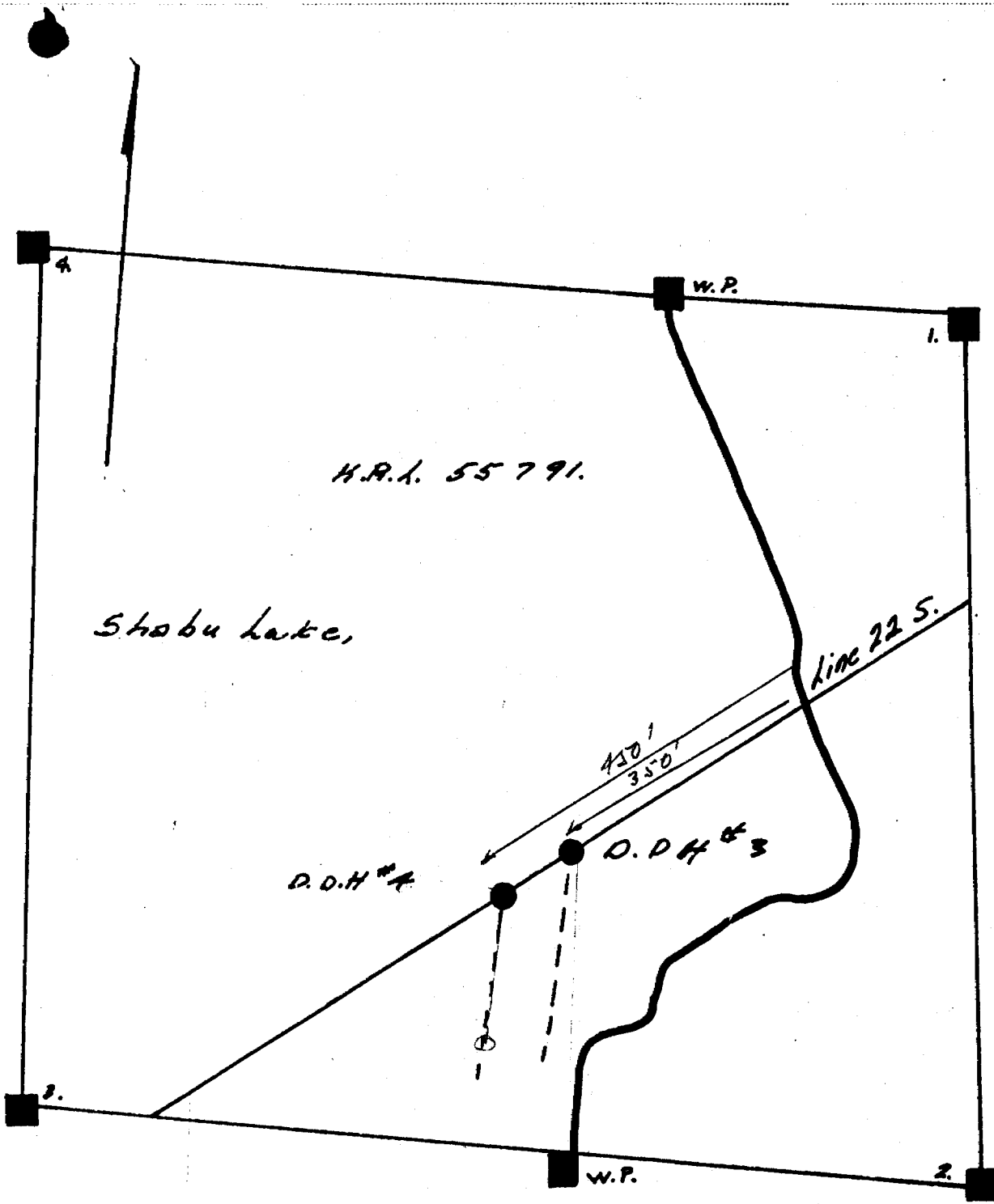
RED LAKE MINING DIV.
RECEIVED
 MAY 2 1967
 AM 7:20 PM 12:34:56

N.S.

N.M.S.H. 2298

DEPTH		DESCRIPTION	ASSAY	
From	To		No.	Oz. Au.
250.0	275.0	Few carbonate stringers in fine grained dacite 250.0 - 275.0		N.S.
275.0	300.0	Fine grained dacite , slightly brecciated , carbonated stringers. 275.0 - 280.0 280.0 - 285.0 285.0 - 290.0 290.0 - 295.0 295.0 - 300.0	680 1 2 3 4	
300.0	325.0	Light green dacite , fine grained , carbonated stringers 300.0 - 305.0 305.0 - 310.0 310.0 - 315.0 315.0 - 320.0 320.0 - 325.0	685 6 7 8 9	
325.0	350.0	Slightly less carbonated , dacite , slightly banded , to resemble Madson Tuff , few garnets , heavy pyrrhotite few specks chalcopyrite , 344.5 - 345.5 , slight pyrite and pyrrhotite 346.5 - 350.0 325.0 - 330.0 330.0 - 335.0 335.0 - 340.0 340.0 - 344.5 344.5 - 346.5 346.5 - 347.7 347.7 - 350.0	690 1 2 3 4 5 6	
350.0	375.0	Fine grained dacitic , slightly carbonated , 365.0 - 375.0 few patches pyrite and pyrrhotite. 350.0 - 355.0 355.0 - 360.0 360.0 - 365.0 365.0 - 370.0 370.0 - 375.0	697 8 9 700 1	
375.0	400.0	Fine grained dark green dacite , garnets carbonate stringers 395.0 . dk 1 " heavy pyrite 394.0 375.0 - 380.0 380.0 - 385.0 385.0 - 390.0 390.0 - 395.0 395.0 - 400.0	705 6 7 8 9	
400.0	425.0	Fine grained dark green dacite , garnets carbonate stringers diorite dike 422.0 - 423.0 400.0 - 405.0 405.0 - 410.0 410.0 - 415.0 415.0 - 420.0 420.0 - 425.0	710 1 2 3 4	

RED LAKE MINING DIV. RECEIVED
AM 7:28 10/28/45



RED LAKE
MINING DIV.
RECEIVED
MAY 2 1967
AM 7:89 10:01 12:23 4:56 PM

Scale 1" = 200'

MADSEN RED LAKE GOLD MINES LIMITED

DIAMOND DRILL REPORT

HOLE NO. **SHAHU # 4**
 STRIKE **S 3 W**
 DIP **- 45 °**
 DEPTH **402.0**

STARTED **April 15/ 67**
 FINISHED **April 17 / 67**

LOCATION **KRL 55791**
 DEPARTURE **Line 22 South**
 LATITUDE **1200 West**
 ELEVATION **ICE LEVEL**

N.M.P.

DEPTH		DESCRIPTION	ASSAY	
FROM	To		No.	Oz. AU
0.0	25.0	Water clay 19.0 - 25.0		
25.0	50.0	Clay , sand , gravel and boulders 45.0 - 50.0		
50.0	75.0	Sand , gravel and boulders		
75.0	100.0	Sand , gravel and boulders 75.0 - 95.0 Fine grained medium green dacitic lavas , few faint carbonate stringers		
		0.0 - 95.0		
		95.0 - 100.0	745	N.S.
100.0	125.0	Slightly more massive dacite , carbonate stringers		
		100.0 - 105.0	746	
		105.0 - 110.0	7	
		110.0 - 115.0	8	
		115.0 - 120.0	9	
		120.0 - 125.0	50	
125.0	150.0	Fine grained dacite , possibly slightly brecciated , , considerable carbonate stringers , little pyrite 147.6 - 148.6		
		125.0 - 130.0	751	
		130.0 - 135.0	2	
		135.0 - 140.0	3	
		140.0 - 145.0	4	
		145.0 - 147.6	5	
		147.6 - 148.6	6	
		148.6 - 150.0	7	
150.0	175.0	Slightly less carbonated , dacite , carbonate and massive pyrrhotite 173.3 - 174.3		
		150.0 - 155.0	758	
		155.0 - 160.0	9	
		160.0 - 165.0	60	
		165.0 - 170.0	1	
		170.0 - 173.3	2	
		173.3 - 174.3	3	
		174.3 - 175.0	4	
175.0	200.0	Massive dark green dacitic sections , highly carbonated , remainder scattered stringers , carbonate and pyrrhotite 176.3 - 177.5 , brecciated 198.6 - 200.0		

RED LAKE
MINING DIV.

RECEIVED

APR 20 1967

DEPTH		DESCRIPTION	ASSAY			
M	To		No.	Oz. Au.		
175.0	200.0	175.0 - 176.5	765			
		176.5 - 177.5	6			
		177.5 - 180.0	7			
		180.0 - 185.0	8			
		185.0 - 190.0	9			
		190.0 - 195.0	70			
		195.0 - 198.6	1			
		198.6 - 200.0	2			
		200.0	225.0	Massive dacite , few carbonate stringers		
				200.0 - 205.0	773	
205.0 - 210.0	4					
210.0 - 215.0	5					
215.0 - 220.0	6					
220.0 - 225.0	7					
225.0	250.0			Fairly massive dacite		
		225.0 - 230.0	778			
		230.0 - 235.0	9			
		235.0 - 240.0	80			
		240.0 - 245.0	1			
250.0	275.0	Massive dacite , possibly few phenocrysts				
		245.0 - 250.0	2			
		250.0 - 255.0	783			
		255.0 - 260.0	4			
		260.0 - 265.0	5			
		265.0 - 270.0	6			
275.0	300.0	Massive dacite , banded , mica & biotite , developed along with red garnets O.A. 45° highly carbonated				
		270.0 - 275.0	7			
		275.0 - 280.0	788			
		280.0 - 285.0	9			
		285.0 - 290.0	90			
		290.0 - 293.3	1			
		293.3 - 294.0	2			
		294.0 - 295.0	3			
300.0	325.0	Dark green tuff , mica , garnet developed , massive pyrrhotite, little pyrite				
		295.0 - 300.0	4			
		300.0 - 305.0	795			
		305.0 - 310.0	3			
		310.0 - 315.0	7			
325.0	350.0	Massive dacite , garnets 350.0 on , bands looks like sediments 342.2 - 350.0				
		315.0 - 320.0	8			
		320.0 - 325.0	9			
		325.0 - 330.0				
		330.0 - 335.0				
		335.0 - 340.0				
		340.0 - 342.2				
342.2 - 343.5						
343.5 - 347.0						

RED L806
MINING DIV
RECEIVED
APR 12 1958
PM 3:45

N.M.P.-N 2208

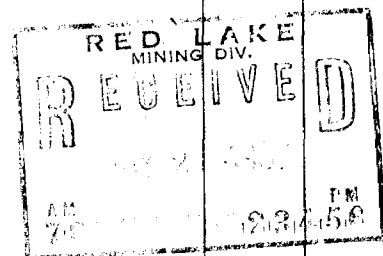
DEPTH		DESCRIPTION	ASSAY	
M	To		No.	Oz. AU.
		545.0 - 547.0	806	
		547.0 - 549.2	7	
		549.2 - 550.0	8	
350.0	375.0	Fine grained massive dark grey rhyolite, Tuff 350.0 - 357.6 light to medium pyrrhotite 350.0 - 357.6, slightly sheared 350.0 - 351.0		
		350.0 - 352.5	809	
		352.5 - 355.0	10	
		355.0 - 357.6	1	
		357.6 - 360.0	2	
		360.0 - 365.0	3	
		365.0 - 370.0	4	
		370.0 - 375.0	5	
375.0	400.0	Very fine grained dense rhyolite, 383.6 - 384.6 cherty light grey fine banding C.A. 20 degrees, 384.6 - 400.0 fine grained light grey, lincation of the larger particles of cherty material near contact. remainder grains quartz cemented by calcite. grain size of quartz 1/8"		
		375.0 - 380.0	856	
		380.0 - 385.0	7	
		385.0 - 390.0	8	
		390.0 - 395.0	9	
		395.0 - 400.0	160	
400.0	402.0	Light grey quartz grains cemented by calcite.		
		400.0 - 402.0	861	

402.0 End of hole

Hole cemented.

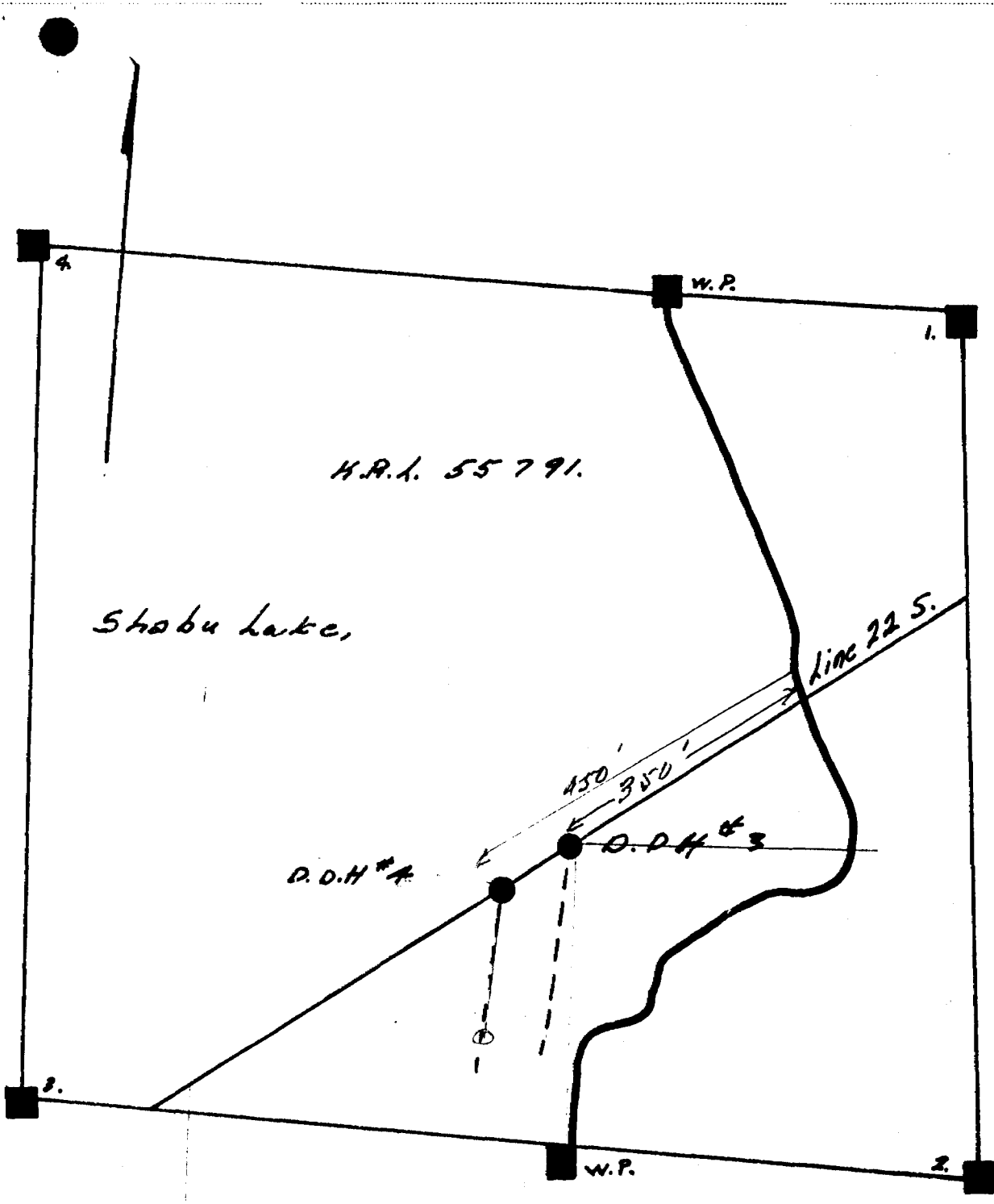
Hole logged by *Madsen*

Core stored at Madsen



BY *J.B.* DATE *March 7/67* SUBJECT *Shabu Lake*
CHKD. BY DATE *Diamond Drilling*

SHEET NO. *2* OF *3*
JOB NO. *08-10 Shabu*



H.P.L. 55791.

Shabu Lake,

line 22 S.

D.O.H #1

450'

350'

D.O.H #2

w.p.

RED LAKE
MINING DIV.
RECEIVED
MAY 2 1967
AM 7:50 PM 2:34:56

Scale 1" = 200'

SHABU LAKE.

MADSEN RED LAKE GOLD MINES LIMITED

RED LAKE MINING DIV. RECEIVED JUN 20 1967 AM 7 8 9 10 11 12 1 2 3 4 5 6 PM

DIAMOND DRILL REPORT

HOLE NO. Shabu # 5
 STRIKE S 70 W
 DIP - 45°
 DEPTH 356.0

STARTED June 13 / 67
 FINISHED June 15 / 67

LOCATION KIL 55728
 DEPARTURE Line 14 N
 LATITUDE 600 E
 ELEVATION Lake plus 4.0' app

N.M.P.

DEPTH		DESCRIPTION	ASSAY	
FROM	TO		No.	Oz. Au
0.0	25.0	Casing 0.0 - 10.0 Fine grained dark material mainly quartz , or silicious , some calcite , little pyrrhotite. 13.0 - 20.0		
		8.0 - 10.0	N.S.	
		10.0 - 13.0	451	
		13.0 - 15.0	2	
		15.0 - 17.5	3	
		17.5 - 20.0	4	
		20.0 - 25.0	5	
25.0	50.0	Light grey crystalline limestone 25.0 - 30.0 dark grey mineralized with pyrite , quartz and calcite 44.1 - 47.1		
		25.0 - 30.0	456	
		30.0 - 35.0	7	
		35.0 - 40.0	8	
		40.0 - 44.1	9	
		44.1 - 47.1	60	
		47.1 - 50.0	1	
50.0	75.0	Light grey crystalline limestone , dark to greenish , medium pyrite 51.0 - 58.0 dark grey with medium pyrite 58.0 - 66.5 , fine grained black with pyrrhotite banding C.A. 45 degrees at 65.5		
		50.0 - 51.5	462	
		51.5 - 55.0	3	
		55.0 - 58.5	4	
		58.5 - 60.0	5	
		60.0 - 62.5	6	
		62.5 - 65.0	7	
		65.0 - 66.5	8	
		66.5 - 70.0	9	
		70.0 - 75.0	70	
75.0	100.0	Light grey crystalline limestone , medium green slightly altered , few garnets possibly dacite 94.3 - 100.0		
		75.0 - 80.0	471	
		80.0 - 85.0	2	
		85.0 - 90.0	3	
		90.0 - 95.0	4	
		95.0 - 100.0	5	
100.0	125.0	Crystalline limestone , light grey limestone with small grains of quartz 100.0 - 102.4 , limestone str aked with pyrite medium to massive 111.7 - 116.8 , dark grey fine banding mineralized with medium pyrite , some cherty sections C.A. 40 degrees 116.8 - 121.0		

N.M.P.

RED LAKE
MINING DIV.
RECEIVED
JUN 20 1967
7 8 9 10 11 12 1 2 3 4 5 6
AM PM

DEPTH		DESCRIPTION	ASSAY	
From	To		No.	Oz. Au
		100.0 - 105.0	76	
		105.0 - 110.0	7	
		110.0 - 111.7	8	
		111.7 - 113.7	9	
		113.7 - 115.0	80	
		115.0 - 116.8	1	
		116.8 - 121.0	2	
		121.0 - 125.0	3	
125.0	150.0	Medium green, banded sediments, fine-grained, few garnets, some carbonate C.A. 45 degrees, calcite 128.4 - 134.3 few stringers pyrite, calcite 147.6 - 150.0, scattered bands pyrite and pyrrhotite in limestone, cherty sections on contacts.		
		125.0 - 130.0	484	
		130.0 - 135.0	5	
		135.0 - 140.0	6	
		140.0 - 145.0	7	
		145.0 - 150.0	8	
150.0	175.0	Alternating bands limestone and greenish sediments, few sections cherty, little quartz, light grey limestone 159.1 - 175.0 massive pyrite 166.7 - 169.0		
		150.0 - 155.0	489	
		155.0 - 160.0	90	
		160.0 - 165.0	1	
		165.0 - 166.7	2	
		166.7 - 169.0	3	
		169.0 - 170.0	4	
		170.0 - 175.0	5	
175.0	200.0	Light grey limestone, sections greenish tinged, few small sections sediments, little pyrite, greenish quartz 176.3 - 180.0		
		175.0 - 176.3	496	
		176.3 - 178.1	7	
		178.1 - 180.0	8	
		180.0 - 185.0	9	
		185.0 - 190.0	500	
		190.0 - 195.0	1	
		195.0 - 200.0	2	
200.0	225.0	Light grey limestone, quartz 204.7 - 206.6		
		200.0 - 204.7	503	
		204.7 - 206.6	4	
		206.6 - 210.0	5	
		210.0 - 215.0	6	
		215.0 - 220.0	7	
		220.0 - 225.0	8	
225.0	250.0	Light grey limestone, light green rhyolitic, few garnets, slight pyrrhotite 238.7 - 241.0		
		225.0 - 230.0	509	
		230.0 - 235.0	10	
		235.0 - 240.0	1	
		240.0 - 245.0	2	
		245.0 - 250.0	3	

RED LAKE MINING DIV.
 SHEET NO. **RECEIVED**
 JUN 20 1967
 AM 7 8 9 10 11 12 1 2 3 4 5 6
 PM 7 8 9 10 11 12 1 2 3 4 5 6
 ASSAY No. Oz. Au.

DEPTH		DESCRIPTION	ASSAY	
M	To		No.	Oz. Au.
250.0	275.0	Light grey limestone , banded light and dark grey to green , few garnets , highly carbonated C.A. 60 degrees, slight pyrrhotite 261.2 - 273.7	250.0 - 255.0	514
			255.0 - 260.0	5
			260.0 - 261.2	6
			261.2 - 265.0	7
			265.0 - 267.5	8
			267.5 - 270.0	9
			270.0 - 271.9	20
			271.9 - 273.7	1
		(SEDIMENTS)	273.7 - 275.0	2
275.0	300.0	Dark and light grey banding , quartz, cherty and silicious , some sections sediments , few garnets, mineralized with fine to massive pyrrhotite, in places, some quartz 294.1 - 296.0 , 277.2 - 278.1 , 292.2 - 294.1	275.0 - 277.2	548
			277.2 - 278.1	9
			278.1 - 280.0	50
			280.0 - 282.5	1
			282.5 - 285.0	2
			285.0 - 287.5	3
			287.5 - 290.0	4
			290.0 - 292.2	5
			292.2 - 294.1	6
			294.1 - 296.0	7
			296.0 - 300.0	8
300.0	325.0	Light and dark banding , carbonated in places , little chert light grey , mineralized with fine pyrite through-out C.A. (SEDIMENTS) Quartz 306.0 - 306.8 , 317.3 - 318.3 322.2 - 325.0 limestone , 318.3 - 322.2	300.0 - 305.0	559
			305.0 - 306.0	60
			306.0 - 306.8	1
			306.8 - 310.0	2
			310.0 - 315.0	3
			315.0 - 318.3	4
			318.3 - 320.0	5
			320.0 - 322.2	6
			322.2 - 325.0	7
325.0	350.0	Limestone with cherty sections, few quartz stringers , mineralized with pyrrhotite , medium pyrite 339.5 - 341.7 Quartz 343.5 - 345.3 slight pyrite and pyrrhotite 341.7 - 350.0	325.0 - 330.0	568
			330.0 - 335.0	9
			335.0 - 339.5	70
			339.5 - 341.7	1
			341.7 - 343.5	2
			343.5 - 345.3	3
			345.3 - 350.0	4
350.0	356.0	Limestone slight pyrite and pyrrhotite , quartz , sphalerite and galena at 350.0 - 350.9	350.0 - 350.9	575
			350.9 - 356.0	6

BY *AB*
CHKD. BY

DATE *June 7/67*
DATE

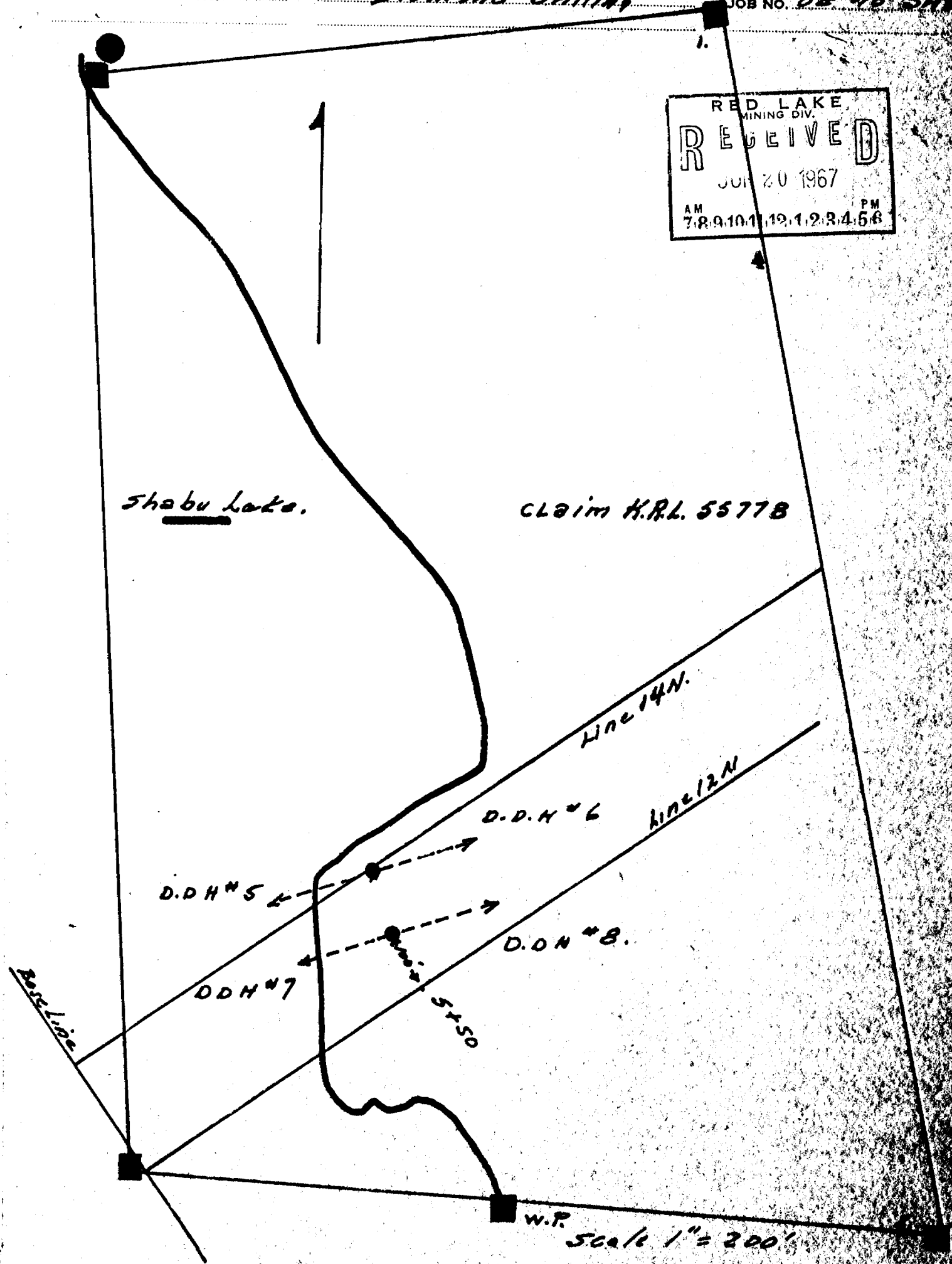
SUBJECT *Shabu Lake
Diamond Drilling*

SHEET NO. *2* OF *2*
JOB NO. *02-10 Shabu*

RED LAKE
MINING DIV.
RECEIVED
JUN 20 1967
AM 7 8 9 10 11 12 1 2 3 4 5 6 PM

Shabu Lake.

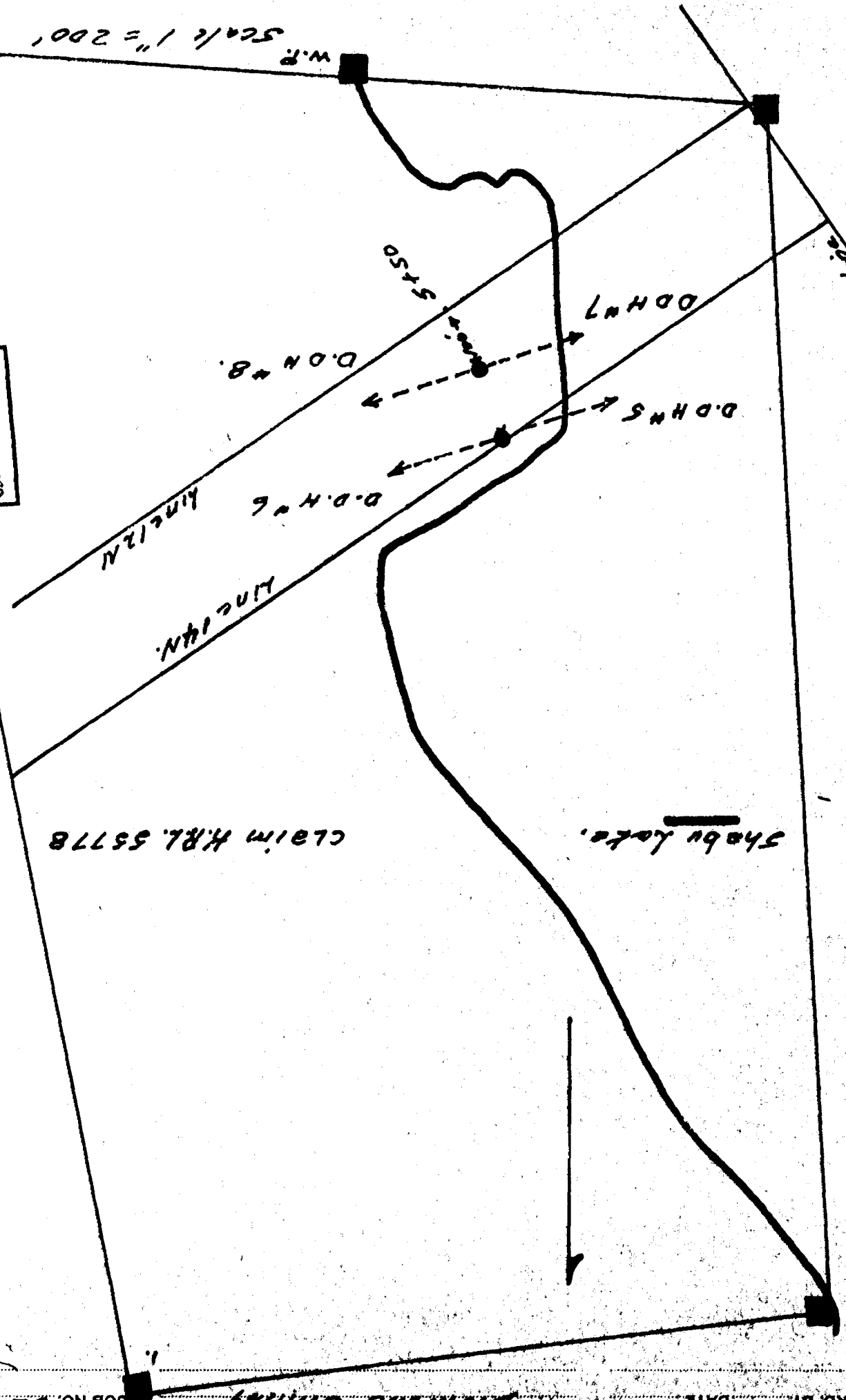
Claim H.R.L. 5577B



W.P. Scale 1" = 200'

RED LAKE
MINING DIV.
RECEIVED
JUN 20 1967
AM 7 8 9 10 11 12 1 2 3 4 5 6 PM

W.P. Scale 1" = 200'



claim H.R.L. 55778

Shabu Lake

DATE 7/67 SUBJECT Shabu Lake Diamond Drilling JOB NO. 05-10 Shabu. SHEET NO. 2 OF 3

MADSEN RED LAKE GOLD MINES LIMITED



DIAMOND DRILL REPORT

HOLE NO. Shebu # 6
 STRIKE N 70° E
 DIP - 45°
 DEPTH 257.0

STARTED June 15 / 67
 FINISHED June 16 / 67

LOCATION K.R.L 55778
 DEPARTURE Line 14 N
 LATITUDE 600 E
 ELEVATION Lake plus 4.0 ' app

N.M.P.

DEPTH		DESCRIPTION	ASSAY	
FROM	TO		No.	Oz. Au
0.0	25.0	Light grey , fine grained limestone, 1-2 to 2 " greenish sections appears to be volcanics , garnets , little blobs pyrrhotite 20.0 - 25.0 CASING 0.0. ± 10.0		
		0.0 - 10.0	N.S.	
		10.0 - 15.0	577	
		15.0 - 20.0	8	
		20.0 - 25.0	9	
25.0	50.0	Dark blue limestone , Dacitic sediments , volcanics, garnets 25.0 - 26.0		
		25.0 - 30.0	780	
		30.0 - 35.0	81	
		35.0 - 40.0	2	
		40.0 - 45.0	3	
		45.0 - 50.0	4	
50.0	75.0	Dark grey limestone, light grey crystalline limestone 60.0 - 75.0 Medium pyrrhotite 57.0 - 60.0 , very narrow scattered bands pyrrhotite 60.0 - 75.0		
		50.0 - 55.0	585	
		55.0 - 57.1	6	
		57.1 - 60.0	7	
		60.0 - 65.0	8	
		65.0 - 70.0	9	
		70.0 - 75.0	90	
75.0	100.0	Light grey crystalline limestone , massive pyrrhotite 95.0 - 96.3 Few narrow seams pyrrhotite 96.3 - 100.0		
		75.0 - 80.0	591	
		80.0 - 85.0	2	
		85.0 - 90.0	3	
		90.0 - 95.0	4	
		95.0 - 96.3	5	
		96.3 - 100.0	6	
100.0	125.0	Light grey limestone , very slight pyrite through-out , massive pyrrhotite 122.4 - 123.8 ; Medium pyrite 112.5 - 115.0		
		100.0 - 105.0	597	
		105.0 - 110.0	8	
		110.0 - 112.4	9	
		112.4 - 115.0	600	
		115.0 - 120.0	1	
		120.0 - 122.4 122.4	2	
		122.4 123.8 - 123.8 123.8	3	
		123.8 - 125.0	4	

DEPTH		DESCRIPTION	ASSAY	
OM	To		No.	Oz. Au.
125.0	150.0	Light grey limestone , slight to light pyrrhotite 125.0 - 135.0 Pyrrhotite in seams and disseminations, quartz , pyrite and pyrrhotite 141.2 - 143.8 , medium pyrite 146.7 - 147.6		
		125.0 - 130.0	605	
		130.0 - 135.0	6	
		135.0 - 140.0	7	
		140.0 - 141.2	8	
		141.2 - 143.8	9	
		143.8 - 145.0	10	
		145.0 - 146.7	1	
		146.7 - 147.6	2	
		147.6 - 150.0	3	
150.0	175.0	Light grey limestone scattered narrow seams of pyrrhotite through-out , also disseminations massive pyrrhotite , little pyrite 153.5 - 154.2 , 159.7 - 160.7 , 162.9 - 163.8 165.9 - 166.5 , 170.3 - 171.9 . 174.0 - 175.0 Dike dioritic with shreads of biotite 171.9 - 173.3		
		150.0 - 153.5	614	
		153.5 - 154.2	5	
		154.2 - 159.7	6	
		159.7 - 160.7	7	
		160.7 - 162.9	8	
		162.9 - 163.8	9	
		163.8 - 165.9	20	
		165.9 - 166.5	1	
		166.5 - 170.3	2	
		170.3 - 171.9	3	
		171.9 - 174.0	4	
		174.0 - 175.0	5	
175.0	200.0	Dark grey , fine-grained dacite , light grey cherty mineralized with pyrite and pyrrhotite , massive pyrrhotite 178.8 - 180.3 , quartz , massive pyrrhotite pyrite 180.8 - 181.9		
		175.0 - 178.8	626	
		178.8 - 180.3	7	
		180.3 - 180.8	8	
		180.8 - 181.9	9	
		181.9 - 185.0	30	
		185.0 - 190.0	1	
		190.0 - 195.0	2	
		195.0 - 200.0	3	
200.0	225.0	Fine-grained, dark gray dacite		
		200.0 - 205.0	634	
		205.0 - 210.0	5	
		210.0 - 215.0	6	
		215.0 - 220.0	7	
		220.0 - 225.0	8	
225.0	250.0	Dark grey , fine grained dacite , sections resembles diorite dike , no contacts. Grey cherty horizon , little pyrite and pyrrhotite 245.0 2 247.1		

N.M.P.-H 2298

DEPTH		DESCRIPTION	ASSAY	
From	To		No.	Oz. Au.
		225.0 - 230.0	639	
		230.0 - 235.0	40	
		235.0 - 240.0	1	
		240.0 - 245.0	2	
		245.0 - 247.1	3	
		247.1 - 250.0	4	
250.0	257.0	Medium grained dioritic dike		
		250.0 - 257.0	N.S.	

Core logged by *J. H. Madsen* June 19, 1967.

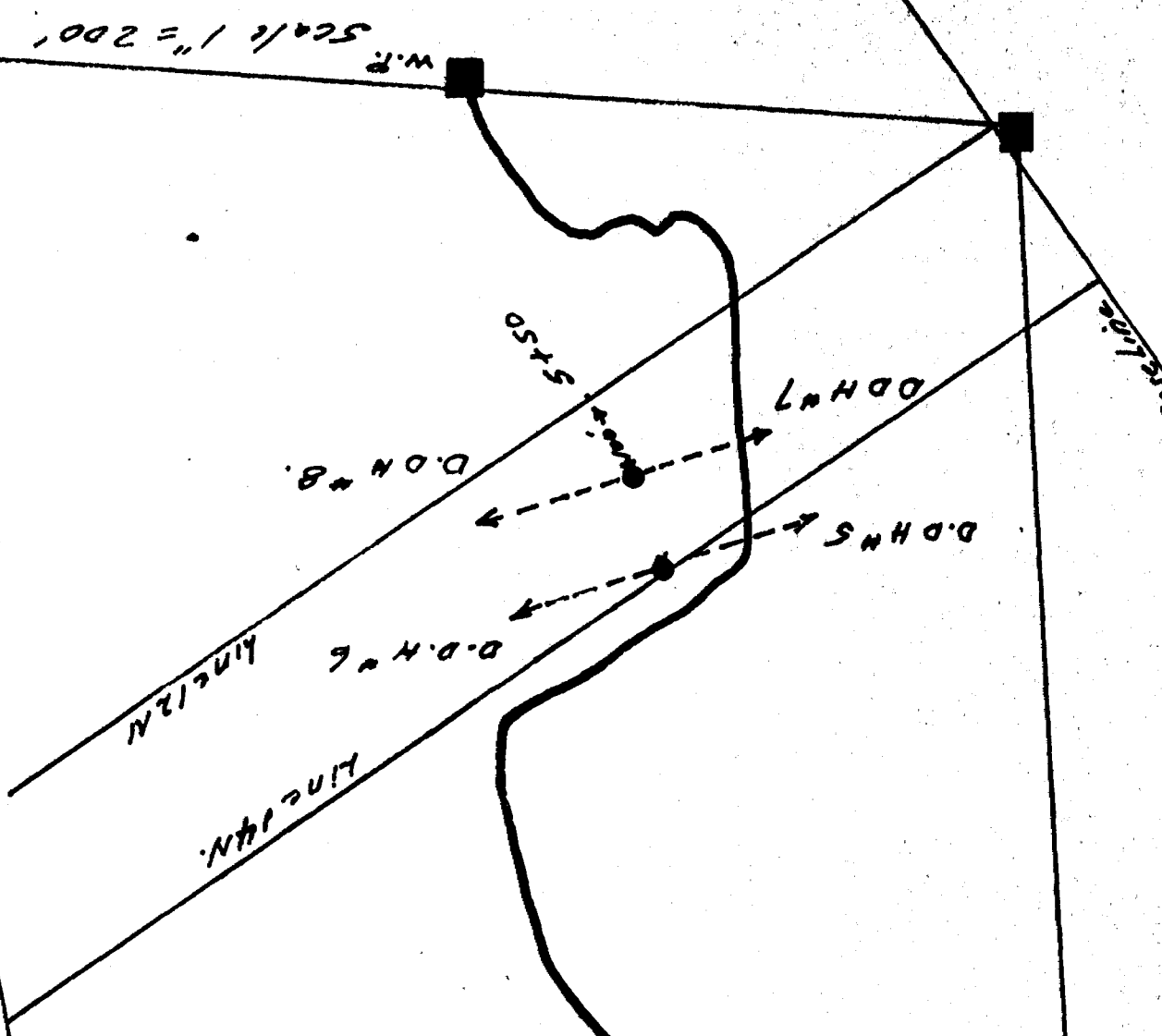
Core stored at Madsen

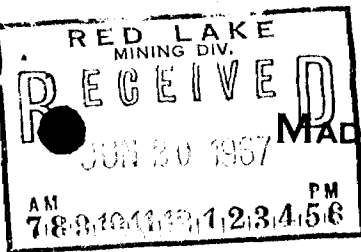


RED LAKE MINING DIV.
RECEIVED
 JUN 20 1967
 AM 7:89 10:11 12:12 3:45 6 PM

BY: *MM* DATE: *7/67* SUBJECT: *Shabu Lake Diamond Drilling* CHECKD BY: _____
 SHEET NO. *2* OF *3* JOB NO. *05-10 Shabu*

Shabu Lake. CLAIM H.R.L. 55778





MADSEN RED LAKE GOLD MINES LIMITED

DIAMOND DRILL REPORT

HOLE NO. SHABU # 7 LOCATION K.R.L. 557⁷88
 STRIKE S 70 W. STARTED June 1, 1967 DEPARTURE Line 13
 DIP - 45° FINISHED June 9, 1967 LATITUDE 550 East
 DEPTH 357.0 ELEVATION Lake + 6.0' Approx

N.M.P.

DEPTH		DESCRIPTION	ASSAY	
FROM	To		No.	Oz. Au
0.0	25.0	0.0 - 14.0 Casing 14.0 - 25.0 Light grey to greenish banded coarse -grained crystalline limestone- few stringers pyrrhotite.		
		0.0 - 14.0	N.S.	
		14.0 - 15.0	311	
		15.0 - 20.0	2	
		20.0 - 25.0	3	
25.0	50.0	Light grey crystalline limestone, dark grey limestone 40.0 - 50.0 medium pyrrhotite 37.1 - 37.4, 40.3 - 41.2 and 44.6 . 48.4		
		25.0 - 30.0	314	
		30.0 - 35.0	5	
		35.0 - 40.0	6	
		40.0 - 45.0	7	
		45.0 - 50.0	8	
50.0	75.0	Light grey limestone, partly limestone and quartz 50.0 - 53.0, mainly quartz 69.1 - 75.0		
		50.0 - 55.0	319	
		55.0 - 60.0	20	
		60.0 - 65.0	1	
		65.0 - 70.0	2	
		70.0 - 75.0	3	
75.0	100.0	Light grey to medium grey, banded limestone, some cherty sections, also white quartz 75.0 - 75.5 83.8 - 85.0, 85.5 - 86.8, few black cherty sections 75.0 - 85.0 C.A. 50 degrees.		
		75.0 - 80.0	324	
		80.0 - 85.0	5	
		85.0 - 90.0	6	
		90.0 - 95.0	7	
		95.0 - 100.0	8	
100.0	125.0	Limestone, light grey sections, light grey chert and quartz, 120.0 - 125.0 little chlorite developed, little garnet approaching sediments, light grey chert 106.4 - 108.9 quartz 111.1 - 112.9, cherty with pyrite and pyrrhotite 116.5 - 118.0, massive pyrrhotite 118.0 - 118.9, possibly sediments 118.9 - 124.4, dike, micaceous, biotite 124.4 - 125.0		

RED LAKE
MINING DIV.
RECEIVED
JUN 20 1967
AM 7 8 9 10 11 12 1 2 3 4 5 6 PM

DEPTH		DESCRIPTION	ASSAY	
FROM	TO		No.	Oz. AU
		100.0 - 105.0	329	
		105.0 - 110.0	30	
		110.0 - 115.0	1	
		115.0 - 120.0	2	
		120.0 - 125.0	3	
125.0	150.0	Limestone, chert and limestone 131.0 - 139.5, dike 125.0 - 131.0 cherty 145.0 - 146.0 quartz 147.3 - 148.0 possibly sediments 139.5 - 150.0, slight pyrrhotite 140.0 - 150.0		
		125.0 - 130.0	334	
		130.0 - 135.0	5	
		135.0 - 140.0	6	
		140.0 - 145.0	7	
		145.0 - 150.0	8	
150.0	175.0	Light grey limestone, quartz, light grey glassy 163.3 - 165.1 slightly massive pyrrhotite 168.1 - 170.0, slight pyrrhotite 170.0 - 175.0, sections cherty 171.0 - 174.0		
		150.0 - 155.0	339	
		155.0 - 160.0	40	
		160.0 - 165.0	1	
		165.0 - 170.0	2	
		170.0 - 175.0	3	
175.0	200.0	Light grey limestone, Volcanic light green fine grained andesitic 178.0 - 181.1, biotite micas in carbonate 192.0 - 195.4, slight pyrrhotite 176.1 - 181.5		
		175.0 - 180.0	446	
		180.0 - 185.0	7	
		185.0 - 190.0	8	
		190.0 - 195.0	9	
		195.0 - 200.0	50	
200.0	225.0	Crystalline limestone, dark grey, ; quartz 211.9 - 214.4 Dike 206.0 - 206.6		
		200.0 - 205.0	344	
		205.0 - 210.0	5	
		210.0 - 215.0	6	
		215.0 - 220.0	7	
		220.0 - 225.0	8	
225.0	250.0	Crystalline limestone, light grey, ; Volcanic sediments, biotite gneiss 237.3 - 245.0 249.0 - 250.0 C.A. 40°		
		225.0 - 230.0	349	
		230.0 - 235.0	50	
		235.0 - 240.0	1	
		240.0 - 245.0	2	
		245.0 - 250.0	3	
250.0	275.0	Light and dark grey banded, fine grained, micaceous gneissic tuff, few garnets C.A. 45°, slight carbonate 250.0 - 255.0 270.0 - 275.0 slightly cherty 270.0 - 275.0 slight pyrrhotite 258.0 - 262.8		
		250.0 - 255.0	354	
		255.0 - 260.0	5	
		260.0 - 265.0	6	
		265.0 - 270.0	7	
		270.0 - 275.0	8	
275.0	300.0	Crystalline limestone, micaceous sediments 287.3 - 292.3 cherty 292.3 - 297.5 Quartz 297.5 - 298.1, Quartz grains in calcite 294.3 - 296.3		

DEPTH		DESCRIPTION	ASSAY	
FROM	TO		No.	Oz. Au
		275.0 - 280.0	359	
		280.0 - 285.0	60	
		285.0 - 290.0	1	
		290.0 - 295.0	2	
		295.0 - 300.0	3	
300.0	325.0	Light grey limestone , dark banded micaceous sediments 304.6 - 310.0 , medium pyrrhotite 308.0 - 310.0 , odd sections cherty to quartz 310.0 - 312.5		
		300.0 - 305.0	364	
		305.0 - 310.0	5	
		310.0 - 315.0	6	
		315.0 - 320.0	7	
		320.0 - 325.0	8	
325.0	350.0	Light grey limestone , dark, fine, grained , grey cherty 343.3 - 346.5 , quartz 346.5 - 348.7 pyrrhotite 348.7 - 350.0		
		325.0 330.0	369	
		330.0 - 335.0	70	
		335.0 - 340.0	1	
		340.0 - 345.0	2	
		345.0 - 350.0	3	
350.0	357.0	Interbanded black cherty sediments and limestone slight pyrrhotite		
		350.0 - 355.0	374	
		355.0 - 357.0	5	

Logged by *Andrew G. Quinlan*
June 13 , 1967

(split) Core stored in racks at Madson.

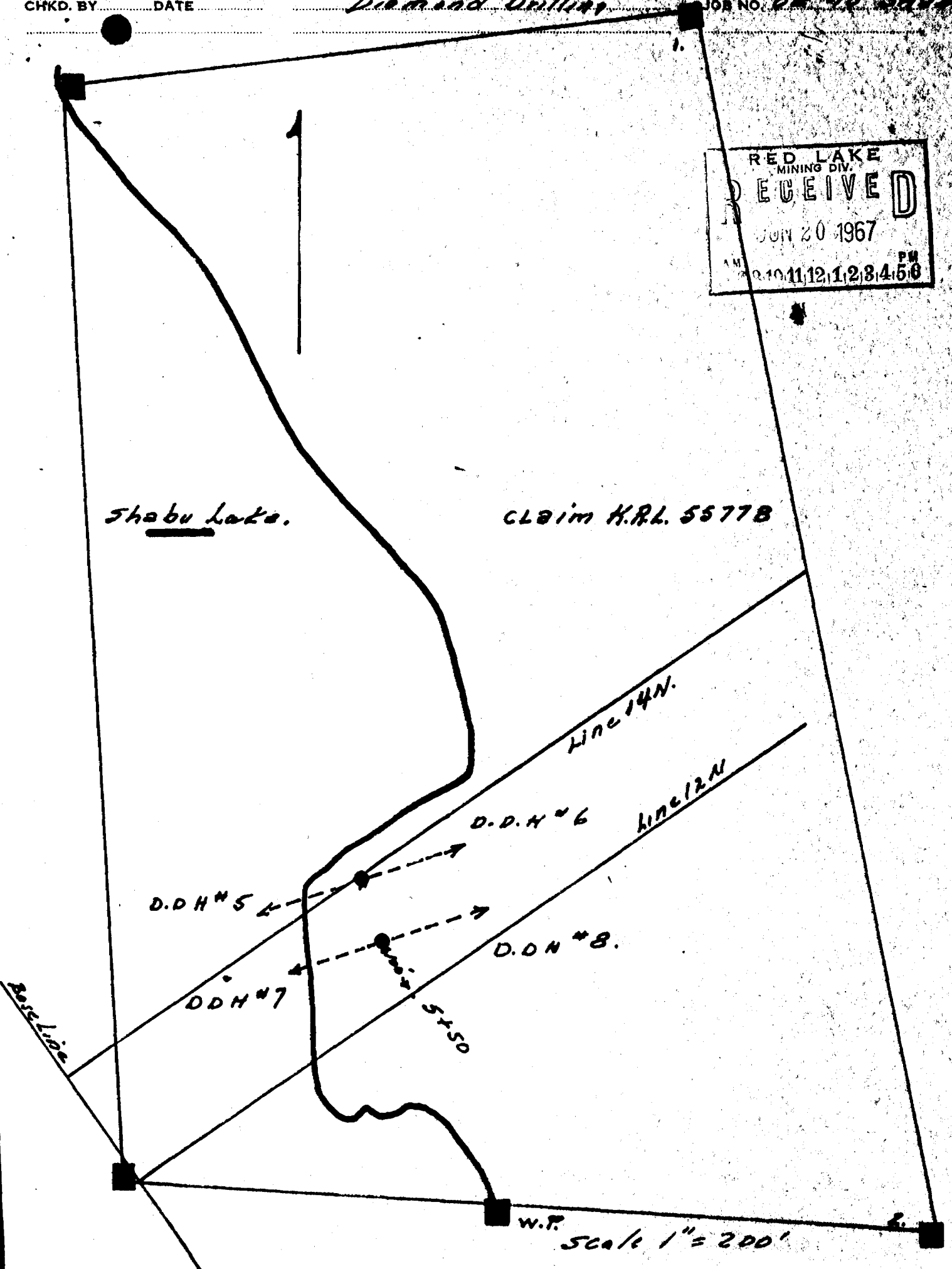


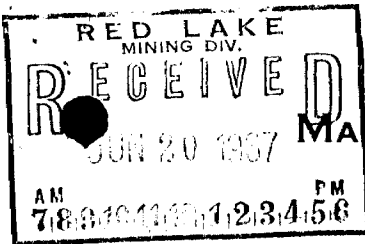
BY *MB* DATE *June 7/67* SUBJECT *Shabu Lake* SHEET NO. *1* OF *2*
CHKD. BY _____ DATE _____ *Diamond Drilling* JOB NO. *20-12-546*

RED LAKE
MINING DIV.
RECEIVED
JUN 20 1967
AM 10 11 12 1 2 3 4 5 6 PM

Shabu Lake.

CLAIM H.R.L. 5577B





MAJSEN RED LAKE GOLD MINES LIMITED

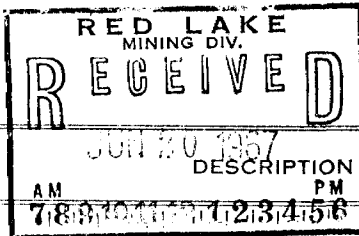
DIAMOND DRILL REPORT

HOLE NO. SHAEU # 8
 STRIKE N 70 E
 DIP - 45°
 DEPTH 256.0

LOCATION K.R.L. 557⁷8
 DEPARTURE Line 13
 LATITUDE 550 East
 ELEVATION Lake plus 6.0 ' app

N.M.P.

DEPTH		DESCRIPTION	ASSAY	
FROM	TO		No.	Oz. Au
0.0	25.0	Casing 0.0. - 15.0 Dark grey to light greenish crystalline limestone		
		0.0 - 15.0	N.S.	
		15.0 - 20.0	376	
		20.0 - 25.0	7	
25.0	50.0	Light grey and dark green crystalline limestone slight pyrite and pyrrhotite 43.0 - 50.0		
		25.0 - 30.0	378	
		30.0 - 35.0	9	
		35.0 - 40.0	80	
		40.0 - 45.0	1	
		45.0 - 50.0	2	
50.0	75.0	Light grey crystalline limestone slight pyrrhotite 50.0 - 52.0 massive pyrrhotite and pyrite 63.7 - 65.0 Very slight pyrite 72.0 - 75.0		
		50.0 - 55.0	383	
		55.0 - 60.0	4	
		60.0 - 63.7	5	
		63.7 - 65.0	6	
		65.0 - 70.0	7	
		70.0 - 75.0	8	
75.0	100.0	Light grey crystalline limestone banding 45° Quartz 81.2 - 82.4 , 84.5 - 85.5 dike 80.5 - 81.2 82.4 - 84.5 pyrite and pyrrhotite 85.5 - 86.9 , 88.5 - 89.4 , 90.0 - 91.9 , 98.7 - 100.0		
		75.0 - 80.5	389	
		80.5 - 81.2	90	
		81.2 - 82.4	1	
		82.4 - 84.5	2	
		84.5 - 85.5	3	
		85.5 - 86.9	4	
		86.9 - 88.5	5	
		88.5 - 89.4	6	
		89.4 - 91.9	7	
		91.9 - 95.0	8	
		95.0 - 98.7	9	
		98.7 - 100.0	400	



N.M.P.

DEPTH		DESCRIPTION	ASSAY	
FROM	To		No.	Oz. AU
100.0	125.0	Light grey crystalline limestone mineralized with slight pyrrhotite throughout. massive pyrite 117.3 - 119.8 and 119.8 - 120.7		
		100.0 - 105.0	401	
		100.0 - 110.0	2	
		110.0 - 115.0	3	
		115.0 - 117.3	4	
		117.3 - 119.0	5	
		119.0 - 119.8	6	
		119.8 - 120.7	7	
		120.7 - 125.0	8	
125.0	150.0	Light grey crystalline limestone massive pyrite with scattered pyrrhotite 127.0 - 130.0 massive pyrrhotite slight pyrite 130.0 - 138.0, cherty, light brown mineralized with pyrite 138.0 - 139.0 light grey altered fine grained rhyolite 139.0 - 150.0 little chalcocite 132.0		
		125.0 - 127.0	409	
		127.0 - 130.0	10	
		130.0 - 132.5	1	
		132.5 - 135.0	2	
		135.0 - 138.0	3	
		138.0 - 139.0	4	
		139.0 - 140.0	5	
		140.0 - 145.0	6	
		145.0 - 150.0	7	
150.0	175.0	Light green fine-grained dacitic, altered and banded light and dark 174.0 - 175.0		
		150.0 - 155.0	418	
		155.0 - 160.0	9	
		160.0 - 165.0	20	
		165.0 - 170.0	1	
		170.0 - 175.0	2	
175.0	200.0	Fine-grained, slate grey silicious cherty horizon mineralized with medium to massive pyrite, dike dioritic, 193.7 - 200.0		
		175.0 - 180.0	423	
		180.0 - 182.5	424	
		182.5 - 185.0	5	
		185.0 - 187.5	6	
		187.5 - 190.0	7	
		190.0 - 193.7	8	
		193.7 - 195.0	9	
		195.0 - 200.0	30	
200.0	225.0	Dark green dacitic, fine grained dioritic dike		
		200.0 - 205.0	431	
		205.0 - 210.0	2	
		210.0 - 215.0	3	
		215.0 - 220.0	4	
		220.0 - 225.0	5	

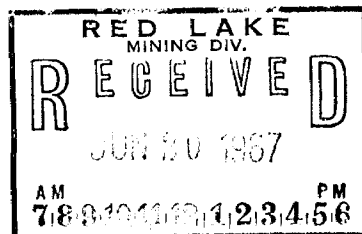
N.M.P.

DEPTH		DESCRIPTION	ASSAY	
FROM	To		No.	Oz. Au
225.0	250.0	Dark green , fine grained dacitic		
		225.0 - 230.0	436	
		230.0 - 235.0	7	
		235.0 - 240.0	8	
		240.0 - 245.0	9	
		245.0 - 250.0	40	
250.0	256.0	Dark green , fine grained dacitic		
		250.0 - 256.0	441	

F G Harriman

Hole logged by F G Harriman

June 15 , 1967.



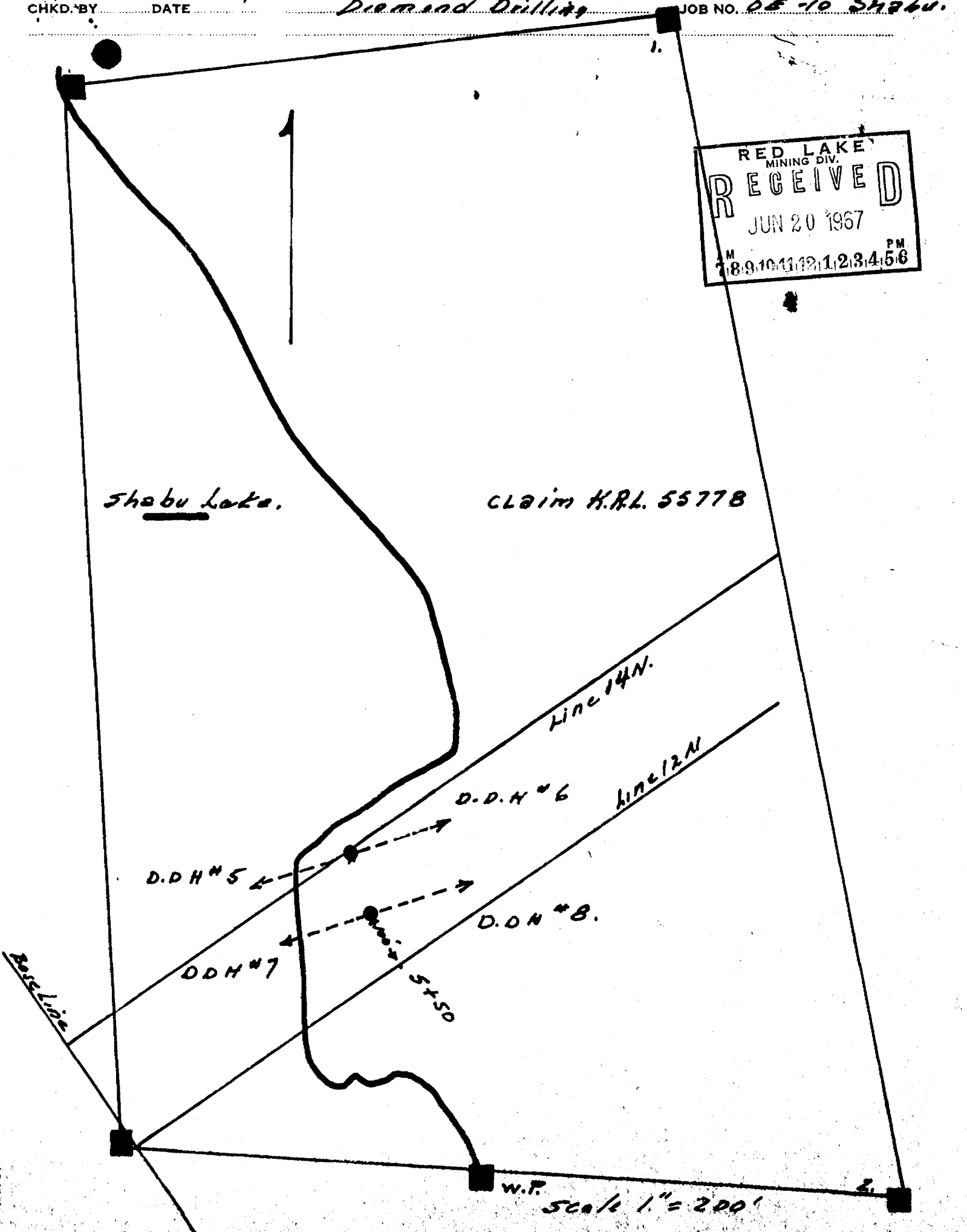
BY *AB*
CHKD. BY

DATE *May 7/67*
DATE

SUBJECT *Shabu Lake
Diamond Drilling*

SHEET NO. *2* OF *3*
JOB NO. *DE-10 Shabu.*

RED LAKE
MINING DIV.
RECEIVED
JUN 20 1967
M 1 2 3 4 5 6 PM



Shabu Lake.

Claim H.R.L. 55778

Line 14N.

D.D.H. #6

Line 12N

D.D.H. #5

D.D.H. #8

D.D.H. #7

5750

Line 16N

W.P. Scale 1" = 200'

SHABU LAKE

MADSEN RED LAKE GOLD MINES LIMITED

RED LAKE MINING DIV.	
RECEIVED	
JUL 10 1967	
AM	PM
7 8 9 10 11 12	1 2 3 4 5 6

DIAMOND DRILL REPORT

HOLE NO. SHABU # 9
 STRIKE North
 DIP - 45
 DEPTH 200.0

STARTED June 18, 1967
 FINISHED June 20, 1967

LOCATION K.R.L. 5579
 DEPARTURE Line 2540
 LATITUDE 1280 West
 ELEVATION Lake + 2.0 feet

N.M.P.

DEPTH		DESCRIPTION	ASSAY	
FROM	TO		No.	Oz. Au
0.0	25.0	Casing 0.0 - 25.0 Dark grey medium grained, massive quartz, feldspar porphyry with deep blue quartz eyes, feldspar phenocrysts		
		0.0 - 9.0	N.S.	
		9.0 - 15.0	645	
		15.0 - 20.0	6	
		20.0 - 25.0	7	
25.0	50.0	Dark grey fine grained dacite, contact zone mainly blue quartz, few light grey and black bands c.a. 45° at 26.0. few garnets, little pyrite; Quartz porphyry 37.0 - 40.0 possibly quartz porphyry with carbonate 49.0 - 50.0		
		25.0 - 26.0	648	
		26.0 - 28.0	9	
		28.0 - 30.0	50	
		30.0 - 31.3	1	
		31.3 - 35.0	2	
		35.0 - 40.0	3	
		40.0 - 45.0	4	
		45.0 - 49.0	5	
		49.0 - 50.0	6	
50.0	75.0	Light grey medium grained quartz porphyry, carbonated banding C.A. 45 degrees, lost core 55.6 - 59.4		
		50.0 - 55.0	657	
		55.0 - 60.0	8	
		60.0 - 65.0	9	
		65.0 - 70.0	60	
		70.0 - 75.0	1	
75.0	100.0	As above carbonated quartz porphyry 86.2 - 87.4 mainly quartz, little pyrite, white micas; fine grained dacite 86.2 - 100.0, slight greenish alteration.		
		75.0 - 80.0	662	
		80.0 - 85.0	3	
		85.0 - 86.2	4	
		86.2 - 87.4	5	
		87.4 - 90.0	6	
		90.0 - 95.0	7	
		95.0 - 100.0	8	
100.0	125.0	Light grey fine grained dacite, slight alteration in isolated spots, slight banding, few garnets developed lost core 103.8 - 105.0, 107.2 - 108.6, light pyrite 112.8 - 115.0, heavy pyrite 116.3 - 118.3, 121.3 - 121.9		

N.M.P.-H 2298

DEPTH		DESCRIPTION	ASSAY	
M	To		No.	Oz. Au.
		100.0 - 103.8	662	
		103.8 - 105.0	N.S.	
		105.0 - 107.2	76	
		107.2 - 108.6	N.S.	
		108.6 - 110.0	1	
		110.0 - 112.8	2	
		112.8 - 115.0	3	
		115.0 - 116.3	4	
		116.3 - 118.3	5	
		118.3 - 120.0	6	
		120.0 - 121.3	7	
		121.3 - 121.9	8	
		121.9 - 125.0	9	
125.0	150.0	Fine-grained massive dark green dacite , spots and stringers carbonate , 136.0 137.1 silicious , blue quartz , some massive pyrrhotite , little pyrite in blobs and stringers along fractures.		
		125.0 - 130.0	680	
		130.0 - 135.0	1	
		135.0 - 136.0	2	
		136.0 - 137.1	3	
		137.1 - 140.0	4	
		140.0 - 145.0	5	
		145.0 - 150.0	6	
150.0	175.0	Dacite, massive pyrite and pyrrhotite 167.5 - 168.6 Tuffaceous andesite , biotite micas developed , lost core 170.0 - 171.0		
		150.0 - 155.0	687	
		155.0 - 160.0	8	
		160.0 - 165.0	9	
		165.0 - 167.5	90	
		167.5 - 168.6	1	
		168.6 - 170.0	2	
		170.0 - 171.0	N.S.	
		171.0 - 175.0	3	
175.0	200.0	Tuffaceous andesite , few carbonate bands, 190.0 - 200.0 Lost cote 178.2 - 179.2 , 182.3 - 183.3 , 185.3 - 186.3 188.1 - 189.0		
		175.0 - 180.0	694	
		180.0 - 185.0	5	
		185.0 - 190.0	6	
		190.0 - 195.0	7	
		195.0 - 200.0	8	

Core logged by *Madsen*

Core stored at Madsen June 28/ 67



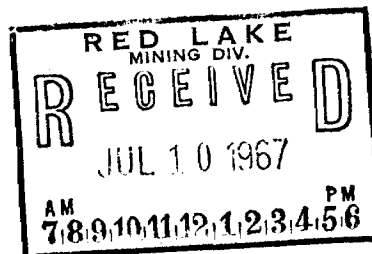
N.M.P.-H 2298

DEPTH		DESCRIPTION	ASSAY	
M	To		No.	Oz. Au.
125.0	150.0	Tuffaceous andesite in part , 130.0 - 150.0 Dacite , small spots carbonate , quartz and quartz stringers little pyrrhotite 127.2 - 128.9		
		125.0 - 127.2	725	
		127.2 - 128.9	6	
		128.9 - 130.0	7	
		130.0 - 135.0	8	
		135.0 - 140.0	9	
		140.0 - 145.0	30	
		145.0 - 150.0	1	
150.0	175.0	Dacite , fine grained , medium green with spots of carbonate , Andesitic tuff 166.6 - 172.3 , Heavy pyrrhotite and little pyrite 166.6 - 167.9 and 170.5 - 172.3		
		150.0 - 155.0	737	
		155.0 - 160.0	8	
		160.0 - 165.0	9	
		165.0 - 166.6	40	
		166.6 - 167.9	1	
		167.9 - 170.5	2	
		170.5 - 172.3	3	
		172.3 - 175.0	4	
175.0	200.0	Dacite , Tuffaceous andesite 182.4 - 192.3 , massive pyrrhotite , little pyrite 196.6 - 197.3 , 198.0 - 198.9 chalcopyrite 198.0		
		175.0 - 180.0	745	
		180.0 - 185.0	6	
		185.0 - 190.0	7	
		190.0 - 195.0	8	
		195.0 - 196.6	9	
		196.6 - 197.3	50	
		197.3 - 198.0	1	
		198.0 - 198.9	2	
		198.9 - 200.0	3	

Corelogged by *Richard J. Dawson*

Core stored at Madsen

June 26 / 67

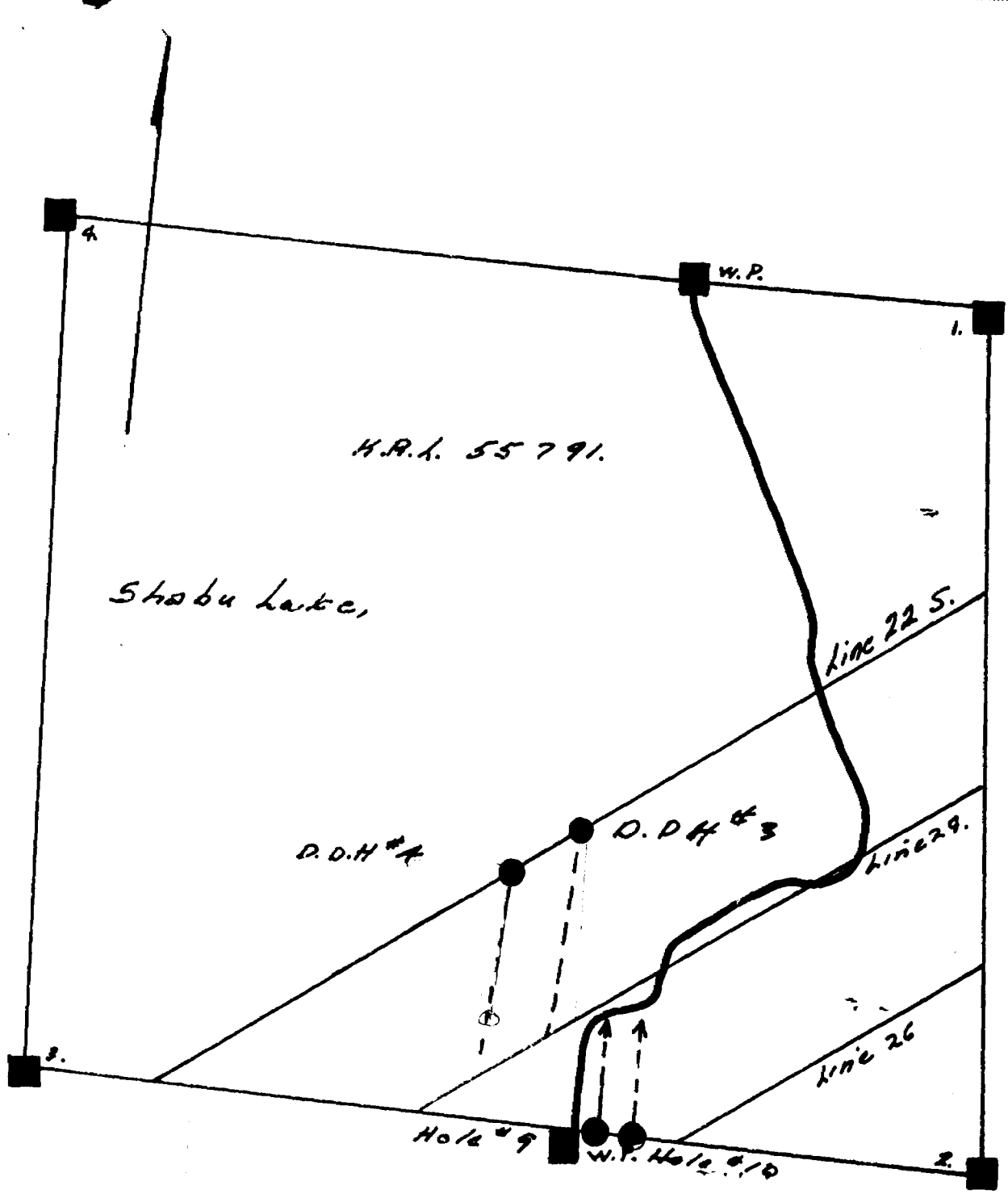


BY *MB*
CHKD. BY

DATE *March 7/67*
DATE

SUBJECT *Shabu Lake
Diamond Drilling*

SHEET NO. *3* OF *3*
JOB NO. *OE-10 Shabu*



RED LAKE
MINING DIV.
RECEIVED
JUL 10 1967
AM 7 8 9 10 11 12 1 2 3 4 5 6 PM

Scale 1" = 200'

MADSEN RED LAKE GOLD MINES LIMITED

RED LAKE
MINING DIV.
RECEIVED
JUL 1 0 1967
AM 7 8 9 10 11 12 1 2 3 4 5 6 PM

DIAMOND DRILL REPORT

HOLE NO. SHABU # 10

STRIKE North

DIP - 45

DEPTH 200.0

STARTED June 20 / 67

FINISHED June 22 / 67

LOCATION K.R.L. 55791

DEPARTURE Line 2565 South

LATITUDE 1240 West

ELEVATION *1000 + 2'*

N.M.P.

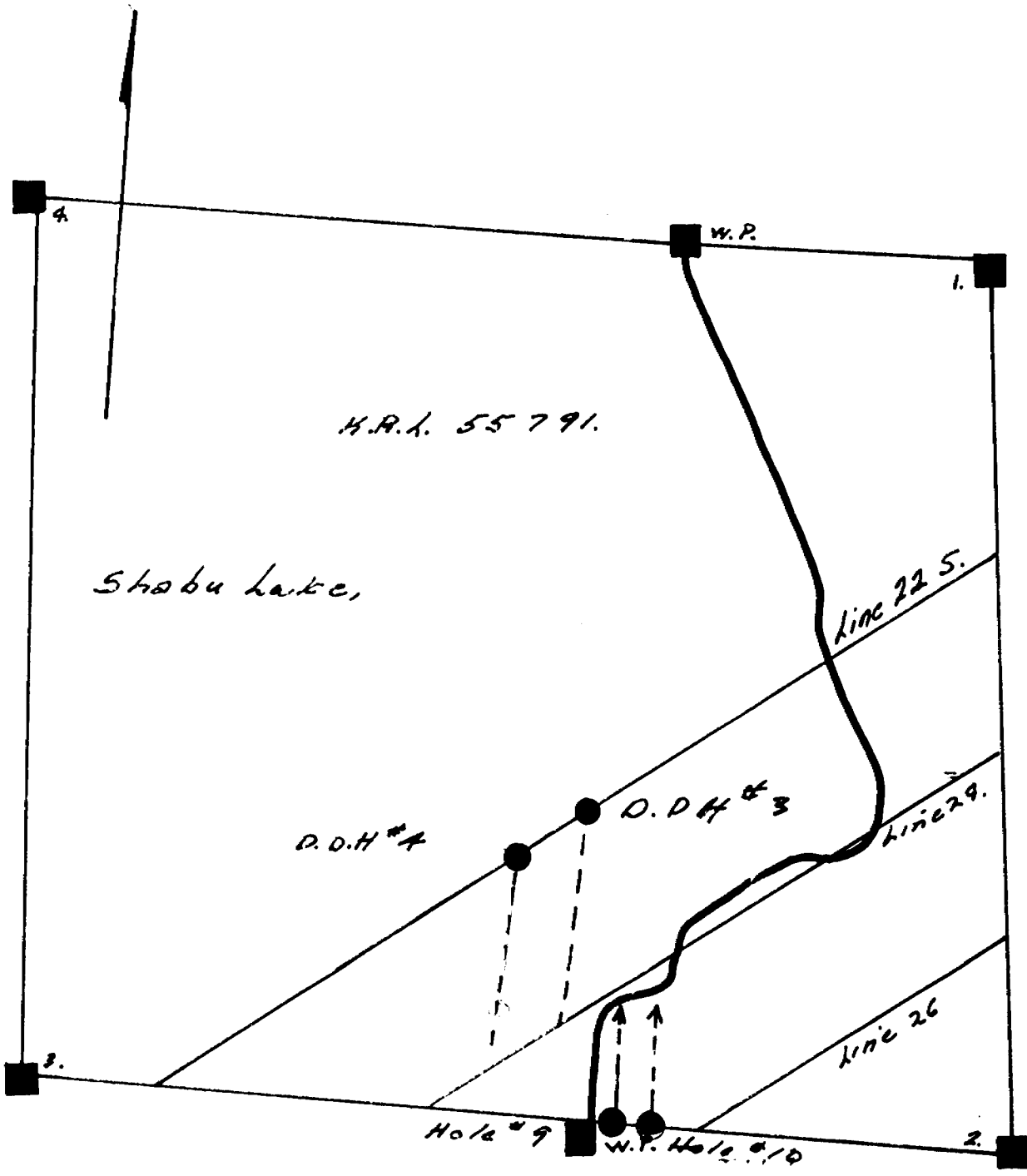
DEPTH		DESCRIPTION	ASSAY	
FROM	TO		No.	Oz. Au
0.0	25.0	Casing 0.0 - 11.0 ; Quartz feldspar porphyry Feldspar phenocrysts , white , quartz eyes deep blue.		
		0.0 - 11.0	N.S.	
		11.0 - 15.0	699	
		15.0 - 20.0	700	
		20.0 - 25.0	1	
25.0	50.0	Fine grained dacite tuff with biotite developed , quartz porphyry 25.0 - 26.0 , garnets 26.0 - 29.6 , Diorite dike 29.6 - 35.0 , quartz stringers 35.0 - 36.1 , quartz porphyry 36.1 - 37.4 , 44.4 - 50.0 carbonated quartz porphyry		
		25.0 - 29.6	702	
		29.6 - 35.0	N.S.	
		35.0 - 36.1	3	
		36.1 - 37.4	4	
		37.4 - 40.0	5	
		40.0 - 45.0	6	
		45.0 - 50.0	7	
50.0	75.0	Carbonated quartz feldspar porphyry		
		50.0 - 55.0	708	
		55.0 - 60.0	9	
		60.0 - 65.0	10	
		65.0 - 70.0	1	
		70.0 - 75.0	2	
75.0	100.0	Carbonate quartz porphyry , 92.7 - 93.4 Blue quartz stringers little pyrite and pyrrhotite , 93.4 - 100.0 fine grained dark grey dacite		
		75.0 - 80.0	713	
		80.0 - 85.0	4	
		85.0 - 90.0	5	
		90.0 - 92.7	6	
		92.7 - 93.4	7	
		93.4 - 95.0	8	
		95.0 - 100.0	9	
100.0	125.0	Tuffaceous andesite , garnet and mica developed , few quartz carbonate stringers.		
		100.0 - 105.0	720	
		105.0 - 110.0	1	
		110.0 - 115.0	2	
		115.0 - 120.0	3	
		120.0 - 125.0	4	

BY *MB*
CHKD. BY

DATE *March 7/67*
DATE

SUBJECT *Shabu Lake
Diamond Drilling*

SHEET NO *3* OF *3*
JOB NO. *OE-10 Shabu*



RED LAKE
MINING DIV.
RECEIVED
JUL 10 1967
AM 7 8 9 10 11 12 1 2 3 4 5 6 PM

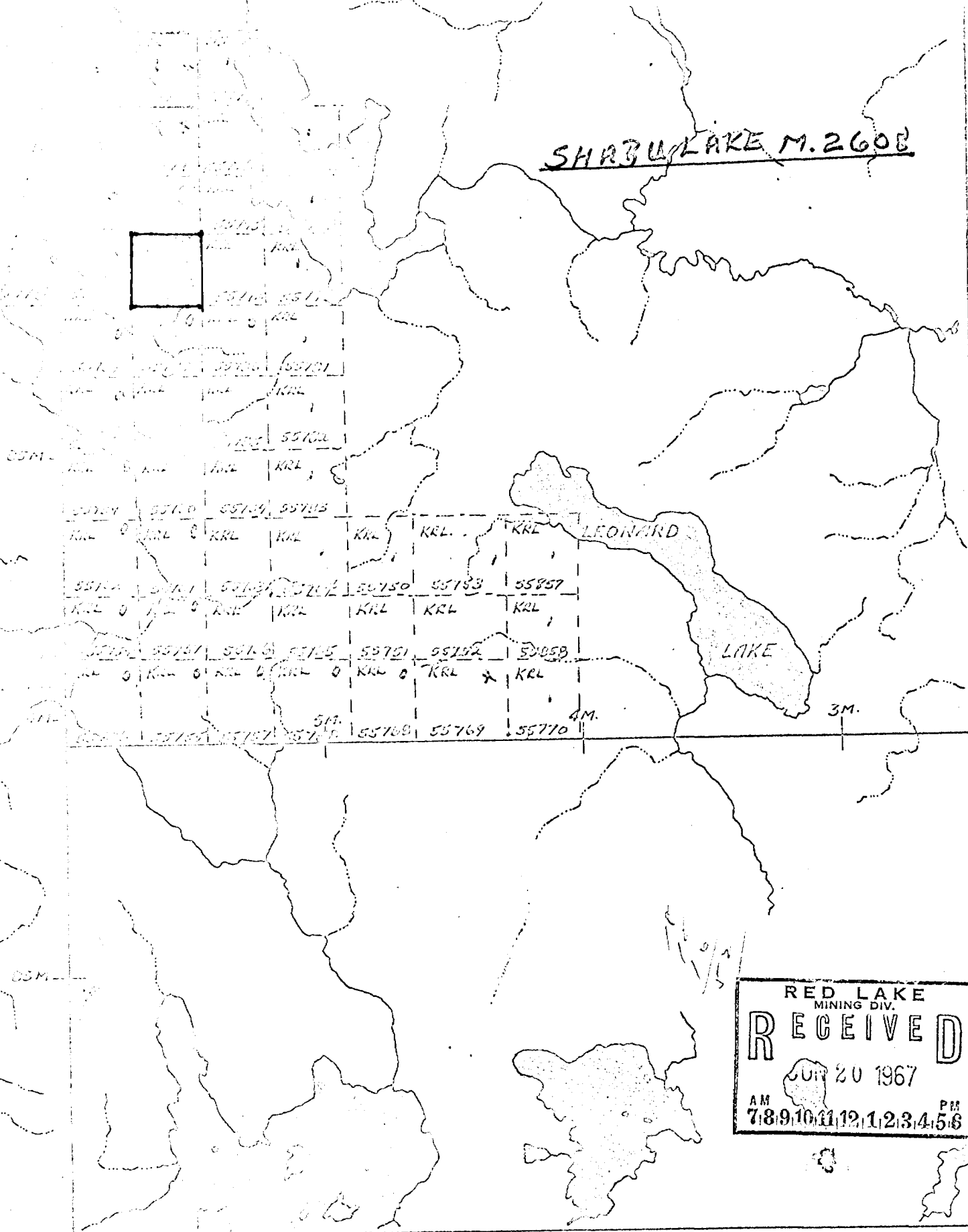
Scale 1" = 200'



52N07SW0007 11 SHABU LAKE

900

SHABU LAKE M. 2608



15'

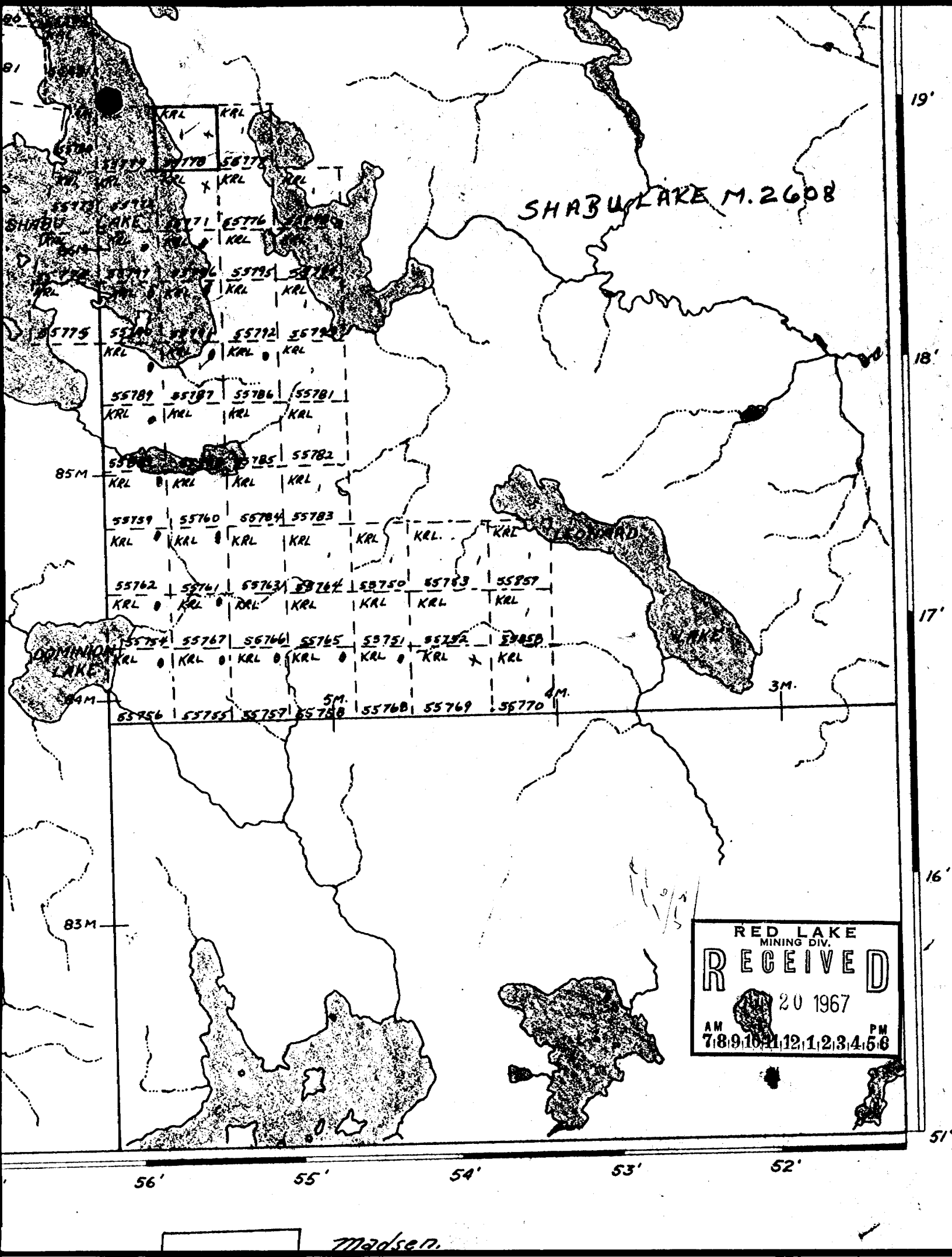
17'

15'

51°

56' 55' 54' 53' 52'

RED LAKE
MINING DIV.
RECEIVED
JUN 20 1967
AM 7 8 9 10 11 12 3 4 5 6 PM



SHABU LAKE M. 2608

SHABU LAKE

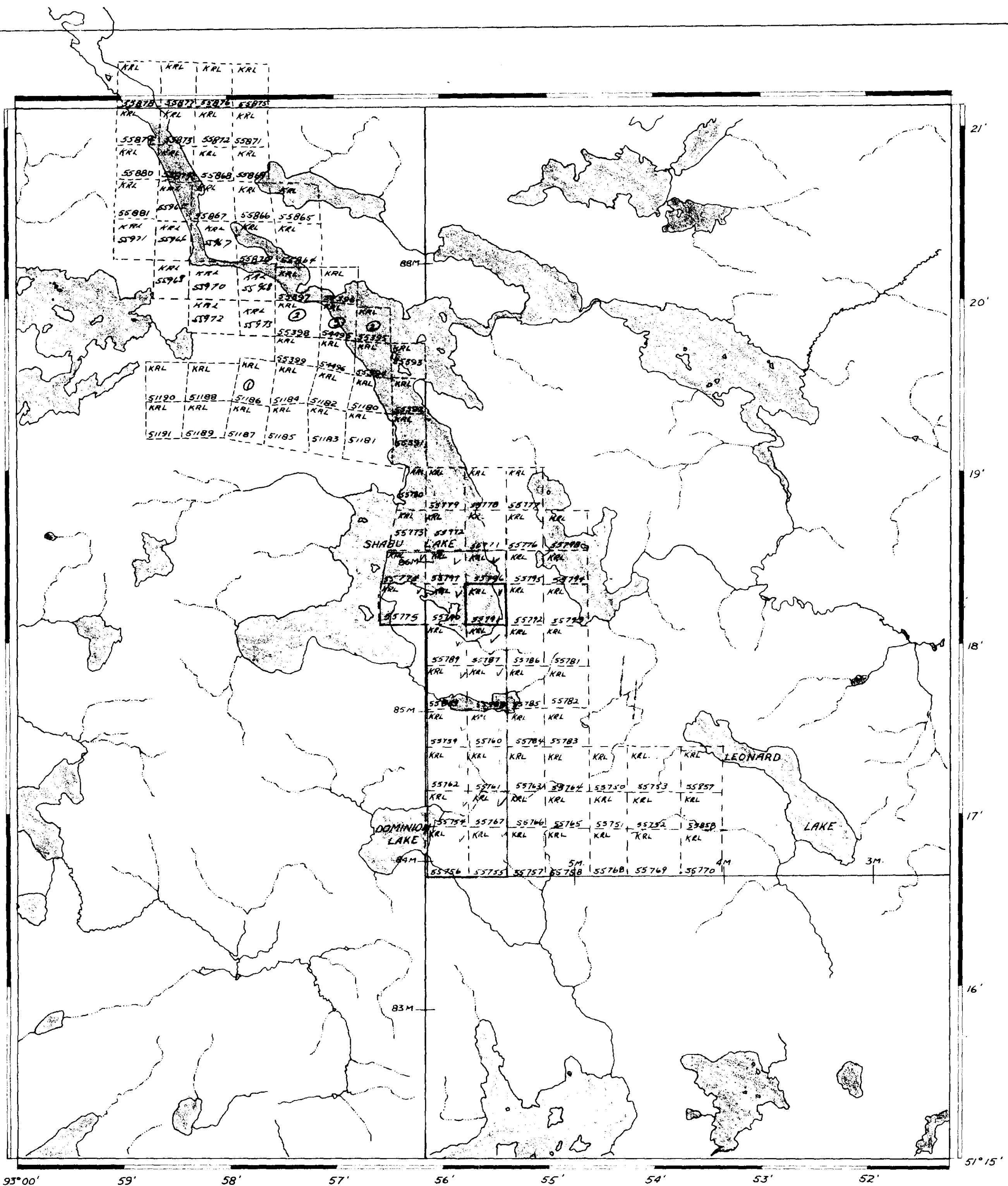
DOMINION LAKE

RED LAKE
MINING DIV.
RECEIVED
20 1967
AM 7:8, 9:10, 11:12, 1:2, 3:4, 5:6 PM

56' 55' 54' 53' 52'

19'
18'
17'
16'
51'

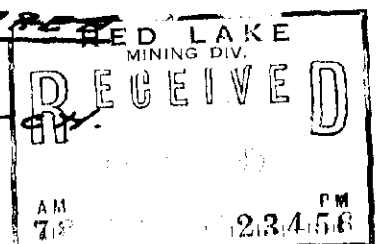
Madsen.



- | | | | |
|---|-----------|--|--------|
| ① | Gold | | Madsen |
| ② | Noranda | | |
| ③ | Desmuckas | | |

MADSEN RED LAKE GOLD MINES LIMITED.

SHABU LAKE AREA
 122008
 STAKING SKETCH

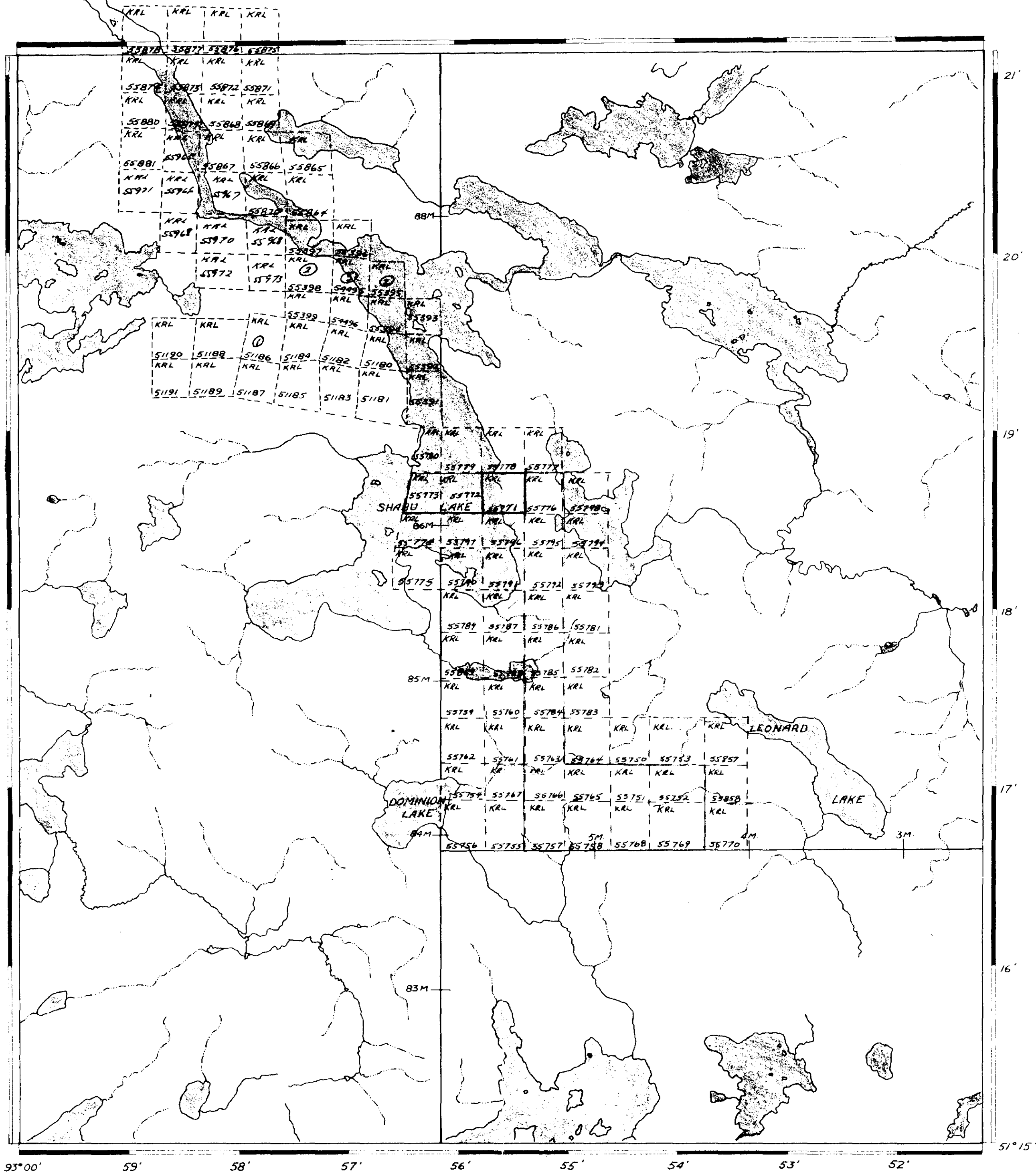


March 12, 1966
 Scale 1 inch to 40 Chains
 Revised May 15, 1966
 28/66



52N075W0007 11 SHABU LAKE

J.H. S.C.



- | | | | |
|---|-----------|--|---------|
| ① | Goldil | | Madsen. |
| ② | Noranda | | |
| ③ | Desmeules | | |

MADSEN RED LAKE GOLD MINES LIMITED.
 SHABU LAKE AREA M. 2608
 STAKING SKETCH.

March 12, 1966
 Scale 1 inch to 40 chains
 Revised May 15, 1966,
 28/66



52N075W0007 11 SHABU LAKE

[Handwritten signature] S.C.