



52008NW9177 52008NW28B1 KAPKICHI LAKE

010

DIAMOND DRILLING

Area: KAPKICHI LK (520/08NW)

Report No:

WORK PERFORMED FOR: UMEX CORP. LTD.

RECORDED HOLDER: SAME AS ABOVE [ ]

: OTHER [ ]

<u>CLAIM NO.</u>	<u>HOLE NO.</u>	<u>FOOTAGE</u>	<u>DATE</u>	<u>NOTE</u>
263813	K38	547'	Sept/70	
263813	K39	491'	Sept/70	
263813	K47	352'	Oct/70	
263813	K49	499'	Oct/70	
263813	K54	387'	Nov/70	
263813	K57	549'	Dec/70	
263813	K59	394'	Dec/70	
<hr/>				
TOTALS :	7	3219		

NOTES:

UNION MINIERE EXPLORATIONS AND MINING CORPORATION LIMITED  
DRILL RECORD.

AREA KAPKICHI LAKE Hole No. K 38

Depth: 547'

Drilled By: INSPIRATION DRILLING

ANOMALY: K 2-1

Bearing and Dip: 45° TOWARDS SOUTH

Started: 18-9-70

Described By:

CLAIM: 263813

Local Coord. X= 32E Y=98.50N Z=

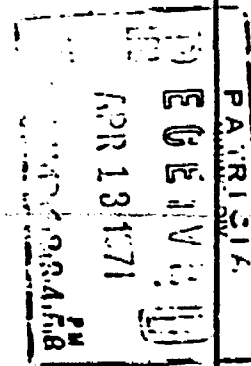
Completed: 22-9-70

Machine: WIRELINE

A. GAUDET

Diam Drill: AXQ

Depth		% Core	Description & Lithology	Mineralization	Dip	No. of Sample.
From	To					
0.0	10.0		<u>Casing</u>			
10.0	103.0		<u>Volcanics</u> , some scattered bandings dipping approx. 30° - 35°, very little sulphide mineralization			
103.0	104.0		<u>Quartz-feldspar dyke</u> , very little sulphide mineralization			
104.0	112.0		<u>Volcanics</u> , with banding dipping approx. 25°, very little mineralization			
112.0	120.0		<u>Granite</u> , fine grained, colour grey, quartz, some feldspar and some hornblende crystals, very little sulphide mineralization			
120.0	135.0		<u>Volcanics</u> , banded, dip approx. 20°, very little sulphide mineralization			
135.0	147.0		<u>Biotite-chlorite schist</u> , scattered to disseminated chalcopyrite and pyrrhotite			
147.0	148.0		<u>Biotite-chlorite schist</u> , good chalcopyrite (conductor)			
148.0	155.0		<u>Biotite-chlorite schist</u> , appears to be more basic than above with less banding, good chalcopyrite dissemination			
155.0	160.0		<u>Biotite-chlorite schist</u> , same as above, good chalcopyrite at 159.0'			
160.0	192.0		<u>Amphibolite</u> , dark green in colour, medium grained, very little sulphide mineralization			



Depth		% of Core	Description & Lithology	Mineralization	Dip	No. of Sample
From	To					
198.0	200.0		<u>Amphibolite</u> , with some distinct banding dipping approx. 25°, very little sulphide mineralization			
200.0	220.0		<u>Amphibolite</u> , coarse to medium grained, has some schistosity or alignment, very little sulphide mineralization			
220.0	224.0		<u>Volcanics</u> , fine grained, colour grey			
224.0	243.0		<u>Amphibolite</u> , medium to coarse grained, some sparsely distributed specks of sulphide minerals			
243.0	450.0		<u>Volcanics</u> , with banding that is for the most part irregular, good banding at 270.0 with an approx. dip of 20°, very little sulphide mineralization at 445.0' 25° dip			
50.0	547.0		<u>Volcanics</u> , fine grained, light grey colour, good banding at 536.0' dip approx. 30°, very little sulphide mineralization			
			547' END OF HOLE			



T. Verbeek D. Sc.  
Manager of Exploration

UNION MINIERE EXPLORATIONS AND MINING CORPORATION LIMITED  
DRILL RECORD.

AREA KAPKICHI LAKE Hole No. K 39

Depth: 491'

Drilled By: INSPIRATION DRILLING

ANOMALY: K 2-1

Bearing and Dip: 45° SOUTH

Started: 24-9-70

Machine: WIRELINE

Described By:

CLAIM: 263813

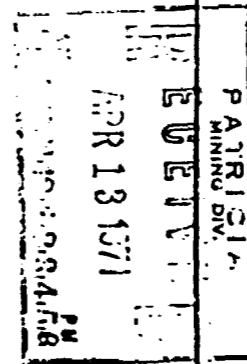
Local Coord. X= 36E Y= 99+75N Z=

Completed: 29-9-70

Diam Drill: AXQ

A. GAUDET

Depth		%	Description & Lithology	Mineralization	Dip	No. of Sample
From	To	Core				
0.0	18.0		<u>Casing</u>			
18.0	100.0		<u>Volcanics</u> , light green colour, fine grained, narrow bands of quartz and calcite, some scattered phenocrysts of feldspar, very little or no sulphide minerals			
100.0	135.0		<u>Volcanics</u> , some biotite, mica noted, some calcite bands, chalc stringer at 112.0' banding approx. 40°			
135.0	147.0		<u>Biotite-chlorite schist</u> , colour green, fine grained, with disseminated chalcopryrite and pyrrhotite, appears to be more basic, also disseminated magnetite, with, from 141.0 - 143.0 strong chalcopryrite, some pyrrhotite with massive magnetite			
147.0	150.0		<u>Volcanics</u> , fine grained, disseminated chalcopryrite and pyrrhotite			
150.0	167.0		<u>Banded volcanics</u> , (andesite), green, some banding dipping about 30° - 40°			
167.0	167.3		<u>Volcanics</u> , strong chalcopryrite, pyrrhotite			
167.3	168.0		<u>Same as above</u> , very little sulphide minerals			
168.0	168.2		<u>Volcanics</u> , strong chalc	125-142 =	45°	
168.2	292.0		<u>Volcanics</u> , green in colour, fine grained, some banding, approx. 20°, very little sulphides	147-150 =	10°	



Depth		% of Core	Description & Lithology	Mineralization	Dip	No. of Sample
From	To					
292.0	491.0		<p><u>Volcanics</u>, same as above, with quartz, some calcite bandings, dipping approx. <math>15^{\circ}</math> - <math>25^{\circ}</math></p> <p>Dip tests at: 300' = <math>46^{\circ}</math> 491' = <math>48^{\circ}</math></p> <p>491' END OF HOLE</p> <p style="text-align: right;"><i>T. Verbeek</i> T. Verbeek D. Sc. Manager of Exploration</p>			

UNION MINIERE EXPLORATIONS AND MINING CORPORATION LIMITED  
DRILL RECORD.

AREA KAPKICHI LAKE Hole No. K 47

Depth: 352'

Drilled By: INSPIRATION DRILLING

ANOMALY: K 2-1 Bearing and Dip: 45° SOUTH

Started: 25-10-70

Machine: WIRELINE

Described By:

CLAIM: 263813 Local Coord. X=L40E Y=101N Z=

Completed: 27-10-70

Diam Drill: AXG

A. GAUDET

Depth		%	Description & Lithology	Mineralization	Dip	No. of Sample.
From	To	Core				
0.0	32.0		<u>Casing</u>			
32.0	75.0		<u>Volcanics</u> , with banding, with an approximate dip of 15° - 20° at 50.0' and 60.0'. This rock is light grey to greenish in colour, very little or no sulphide mineralization			
75.0	91.0		<u>Same rock type as above</u> , some narrow stringers of orthoclase feldspar noted, these are well scattered, banding is approx. 15° - 20° at 80.0' - 90.0'			
91.0	120.0		<u>Biotite-chlorite schist</u> , schistose and magnetic. Strongly disseminated chalcopyrite and pyrrhotite			
120.0	135.0		<u>Same rock type as above</u> , but appears to be less schistose. Some banding dipping approx. 15° - 20°, scattered sulphide mineralization, chalcopyrite and pyrrhotite. Rock is also less magnetic than the above			
135.0	152.0		<u>Biotite-chlorite schist</u> , basic, with some schistosity, strongly magnetic in some sections. Disseminated to strong disseminated chalcopyrite and pyrrhotite			
152.0	162.0		<u>Same rock type as above</u> , is schistose, strongly magnetic in some sections, with strong dissemination to almost massive pyrrhotite and chalcopyrite			
162.0	170.0		<u>Amphibolite</u> , basic, is magnetic, has disseminated to strong disseminated chalcopyrite and pyrrhotite			

RECEIVED  
 APR 13 1971  
 MINING DIV.  
 P.M.

Depth		% of Core	Description & Lithology	Mineralization	Dip	No. of Sample
From	To					
170.0	300.0		<p><u>Volcanics</u>, with weak banding at: 85.0' = 15° - 20° 90.0' = 15° 93.0' = 10°</p> <p>some quartz stringers, no sulphide mineralization, 303.0 sulphide minerals 2" width, 313.0 - 314.0 disseminated chalcopryrite and pyrrhotite</p>			
300.0	352.0		<p><u>Same rock type as above</u>, with quartz stringers at 208.0' and 209.0', small quartz vein 5" wide at 232.0', some green carbonates noted, banding with average dip about 15° - 20°</p> <p>Dip test at: 300' = 45°</p> <p>352' END OF HOLE</p>			



T. Verbeek D. Sc.  
Manager of Exploration

UNION MINIERE EXPLORATIONS AND MINING CORPORATION LIMITED  
DRILL RECORD.

AREA KAPKICHI LAKE Hole No. K 49

Depth: 499'

Drilled By: INSPIRATION DRILLING

ANOMALY: K 2-1

Bearing and Dip: VERTICAL

Started: 27-10-70

Machine: WIRELINE

Described By:

CLAIM: 263813

Local Coord. X=L40E Y= Z= 101+50N

Completed: 31-10-70

Diam Drill: AXQ


A. PAUWELS

Depth		%	Description & Lithology	Depth	Dip OF FORMATION	No. of Sample
From	To	Core				
C.0	27.0		<u>Casing</u> (medium sand)			
27.0	152.0		<u>Volcanics</u> , fine grained, green, finely banded. Thin felspathic layers are imbedded, composed of amphiboles, feldspar (chlorites?)	34'	49°	
152.0	192.0		<u>Biotite-chlorite schist</u> , very fine grained, magnetic. Mineralization of chalcopryrite and pyrrhotite. Rock is microfolded with dip angles ranging from 90° - 35°	47'	47°	
192.0	196.0		<u>Same rock type as above</u> , but more magnetic (magnetite occurs) and less sulphides	73'	52°	
196.0	200.0		<u>Amphibolite</u> , contains hornblende, feldspar, magnetite and fine chlorite or biotite, no mineralization. Less schistose as above	82'	52°	
200.0	348.0		<u>Banded volcanics</u> , fine grained, containing hornblende, feldspar biotite quartz, light green in colour, no mineralization	93'	50°	
348.0	349.0		<u>Chalcopryrite mineralization</u> in sheared volcanics	107'	51°	
349.0	375.0		<u>Banded volcanics</u> as from 200.0 - 348.0	131'	51°	
375.0	376.0		<u>Quartz vein</u>	144'	60°	
376.0	467.0		<u>Banded volcanics</u> , as from 200.0 - 348.0	147'	64°	
				203'	35°	
				234'	42°	
				240'	45°	
				300'	40°	
				318'	47°	
				340'	35°	
				357'	42°	
				392'	41°	
				417'	42°	
				448'	40°	
				493'	30°	
					34°	

INSPIRATION  
MINING DIV.  
JULY 13 1971  
P.M.

./.



Depth		% of Core	Description & Lithology	Depth	Dip or Formation	No. of Sample
From	To					
467.0	473.0		<u>Biotite-chlorite schist</u> , with several bands mineralized with chalcopyrite and pyrrhotite. At 472.0' is 5" of massive chalcopyrite			
473.0	483.0		<u>Banded volcanics</u> , as above			
483.0	485.0		<u>Metagabbro</u>			
485.0	499.0		<u>Banded volcanics</u> , as above			
			499' END OF HOLE			
			 T. Verbeek D. Sc. Manager of Exploration			

UNION MINIERE EXPLORATIONS AND MINING CORPORATION LIMITED  
DRILL RECORD.

AREA KAPKICHI LAKE Hole No. K 54 Depth: 387' Drilled By: INSPIRATION DRILLING  
 ANOMALY: K 2-1 Bearing and Dip: VERTICAL Started: 24-11-70 Machine: WIRELINE Described By:  
 CLAIM: 263813 Local Coord. X=36E Y= 99+70N Z= Completed: 26-11-70 Diam Drill: AXQ A. GAUDET

Depth		%	Description & Lithology	Mineralization	Dip	No. of Sample.
From	To	Core				
0.0	4.0		Casing			
4.0	137.0		Volcanics, banded, fairly fine grained, greenish colour, very little sulphide mineralization			
137.0	147.0		Amphibolite, fine needles of hornblende, some banding, medium grained, dark greenish colour, very little sulphide mineralization			
147.0	160.0		Volcanics, good banding, light green to greyish colour, fine grained, very little or no sulphide mineralization			
160.0	182.0		Biotite-chlorite schist, basic, fine grained, some schistosity, very little banding, dark in colour, scattered to disseminated chalcopyrite and pyrrhotite			
182.0	275.0		Volcanics, banded, light greenish to grey in colour, fine grained, very little or no sulphide mineralization, 200.0 - 201.0 - 2" massive section chalcopyrite			
275.0	345.0		Volcanics, some banding is quite flat, fine grained, greenish to grey in colour, very little sulphide mineralization			
345.0	350.0		Porphyry feldspar- quartz- dyke, no sulphide mineralization			
350.0	358.0		Banded Volcanics, fine grained, no sulphide mineralization			

RECEIVED  
 PATRICK  
 MINING DIV.  
 APR 13 1971

Depth		% of Core	Description & Lithology	Mineralization	Dip	No. of Sample
From	To					
358.0	387.0		<p><u>Banded Volcanics</u>, same as above, no sulphide mineralization</p> <p>Dip test at: 375' = 83°</p> <p>387' END OF HOLE</p> <p style="text-align: center;"><i>T. Verbeek</i></p> <p style="text-align: center;">T. Verbeek D. Sc. Manager of Exploration</p>			

UNION MINIERE EXPLORATIONS AND MINING CORPORATION LIMITED  
DRILL RECORD.

AREA KAPKICHI LAKE Hole No. K 57 Depth: 549' Drilled By: INSPIRATION DRILLING  
 ANOMALY: K 2-1 Bearing and Dip: VERTICAL Started: 30-11-70 Machine: WIRELINE Described By:  
 CLAIM: 263813 Local Coord. X= 32E Y= Z= 98.50N Completed: 2-12-70 Diam Drill: AXQ A. J. GAUDET

Depth		%	Description & Lithology	Mineralization	Dip	No. of Sample
From	To	Core				
0.0	5.0		<u>Casing</u>			
5.0	15.0		<u>Amphibolite</u> , schistose, banding at 12.0' approx. 50° dip, dark green, coarse grained, no sulphide mineralization			
15.0	150.0		<u>Amphibolite</u> , medium to fine grained, schistose, dark greenish colouring, scattered banding throughout, banding at 37.0' - 30° dip, no sulphide mineralization Quartz vein at: 26.0' = 4" Banding at: 67.0' = 35° dip 127.0 - 130.0 = 45° dip 147.0 = 50° dip			
50.0	175.0		<u>Altered volcanics</u> , dark green colouring, very little banding, no sulphide mineralization Banding at: 151.0' = 20° dip			
75.0	190.0		<u>Same as above</u> , no sulphide mineralization, very little banding noted, some irregular ones, dips taken average at 10° - 15°			
90.0	195.0		<u>Biotite-chlorite schist</u> , scattered to disseminated chalcopyrite and pyrrhotite			
95.0	255.0		<u>Volcanics</u> , green colouring, very little banding, one band at 251.0 approx. 10°			
55.0	282.0		<u>Amphibolite</u> , fairly coarse grained, some magnetite, very little sulphide mineralization, no banding			

PATRICIA  
 MINING DIV.  
 REGISTRATION  
 APR 13 1971

./.

Depth		% of Core	Description & Lithology	Mineralization	Dip	No. of Sample
From	To					
352.0	307.0		<u>Same as above</u> , at 305.0' approx. dip 20°, no sulphide mineralization			
307.0	309.0		<u>Feldspar dyke</u> , no sulphide mineralization			
309.0	339.0		<u>Amphibolite</u> , dark green colouring, medium grained, some magnetite, very little or no sulphide mineralization. 2 bands noted - at 326.0' and 327.0' dipping approx. 20°			
339.0	549.0		<u>Same rock type as above</u> , dark green, colouring, medium grained, some magnetite, very scattered banding, dips averaging 15°-20°, very little sulphide mineralization  Dip test at: 545' = 49°  549' END OF HOLE			

*T. Verbeek*


T. Verbeek D. Sc.  
Manager of Exploration

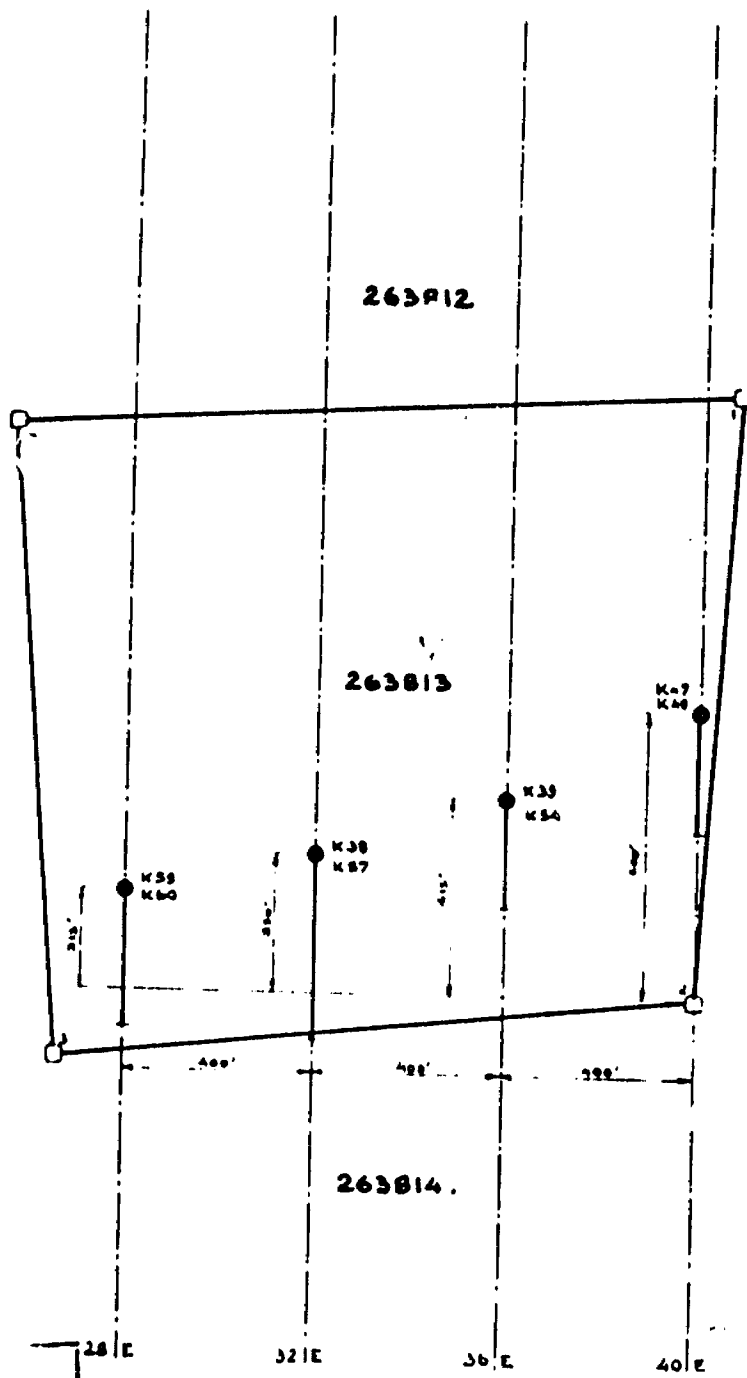
UNION MINIERE EXPLORATIONS AND MINING CORPORATION LIMITED  
DRILL RECORD.

AREA KAPKICHI LAKE Hole No. K 59 Depth: 394' Drilled By: INSPIRATION DRILLING  
 ANOMALY: K 2-1 Bearing and Dip: 45° SOUTH Started: 5-12-70 Machine: WIRELINE Described By:  
 CLAIM: 263813 Local Coord. X=L28E Y=97-75N Z= Completed: 9-12-70 Diam Drill: AXQ A. GAUDET

Depth		%	Description & Lithology	Mineralization	Dip	No. of Sample.
From	To	Core				
0.0	14.0		<u>Casing</u>			
14.0	28.0		<u>Amphibolite</u> , fine grained, fine hornblende crystals, biotite scattered, banding dips average approx. - 20°, no sulphide mineralization			
28.0	118.0		<u>Crushed granite</u> , with feldspar and some quartz porphyroclasts, glassy groundmass, highly fractured, no sulphide mineralization. (Cave at 31.0') Reamed "B" Casing			
16.0	152.0		<u>Volcanics</u> , light grey to greenish colouring, some irregular banding, no dips taken, no sulphide mineralization			
52.0	184.0		<u>Same as above</u> , fine to medium grained, no sulphide mineralization			
24.0	186.0		<u>Breccia</u> , appears to be a cemented fragmented rock, with angular fragments, due to the volcanic rocks in the area it is probably a volcanic breccia			
26.0	202.5		<u>Biotite-chlorite schist</u> , a basic rock, has good to very good chalcopyrite and pyrrhotite			
22.5	207.0		<u>Volcanics</u> , highly fractured, fine grained and greyish to light green in colour, very little banding, no sulphide mineralization			
27.0	224.0		<u>Same rock type as above</u> , with banding, overall average dips are approx. 20° - 30°, some sparse to very scattered mineralization, has also some scattered filled vesicles, is probably an andesite			

PARROT  
 MINING DIV.  
 RECEIVED  
 APR 13 1971  
 PM

Depth		% of Core	Description & Lithology	Mineralization	Dip	No. of Sample
From	To					
224.0	249.0		<u>Same as above</u> , no sulphide mineralization			
249.0	250.0		<u>Breccia</u> , probably a volcanic breccia, no sulphide mineralization			
250.0	254.0		<u>Volcanic</u> , light green colouring, fine grained, no sulphide mineralization			
254.0	255.0		<u>Silicified volcanic</u> , light grey, medium grained, no sulphide mineralization			
255.0	268.0		<u>Amphibolite</u> , fine to medium grained, no sulphide mineralization			
268.0	273.0		<u>Breccia</u> , cemented fragments, no sulphide mineralization			
273.0	325.0		<u>Amphibolite</u> , fine grained, hornblende crystals, some biotite and feldspar			
325.0	375.0		<u>Same rock type as above</u> , banding at 351.0' dip approx. 15°			
375.0	394.0		<u>Amphibolite</u> , fine grained, dark green, no sulphide mineralization, 393.0' dip approx. 15°			
			Dip test at : 300' = 42°			
			394' END OF HOLE			
			 T. Verbeek D. Sc. Manager of Exploration			

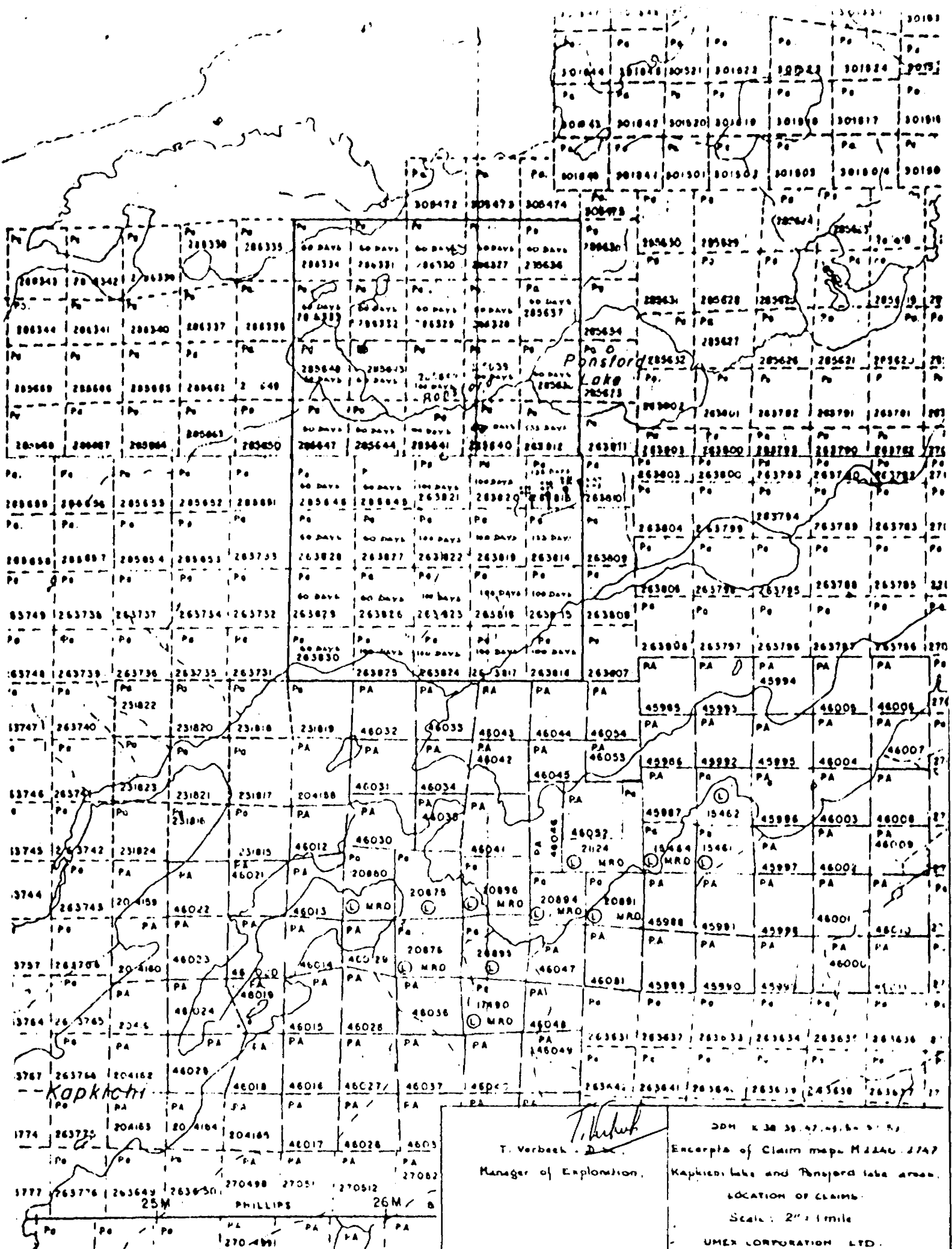


PATRICIA  
 MINING DIV.  
**RECEIVED**  
 APR 13 1971  
 PM  
 ALL INFORMATION IS CONFIDENTIAL

*T. Verbeek*  
 T. Verbeek, D. Sc.  
 Manager of Exploration

LOCATION BDM K 38, 39, 47, 49, 54, 87, 50.  
 Scale: 1" = 400'  
 UMEX CORPORATION LTD.



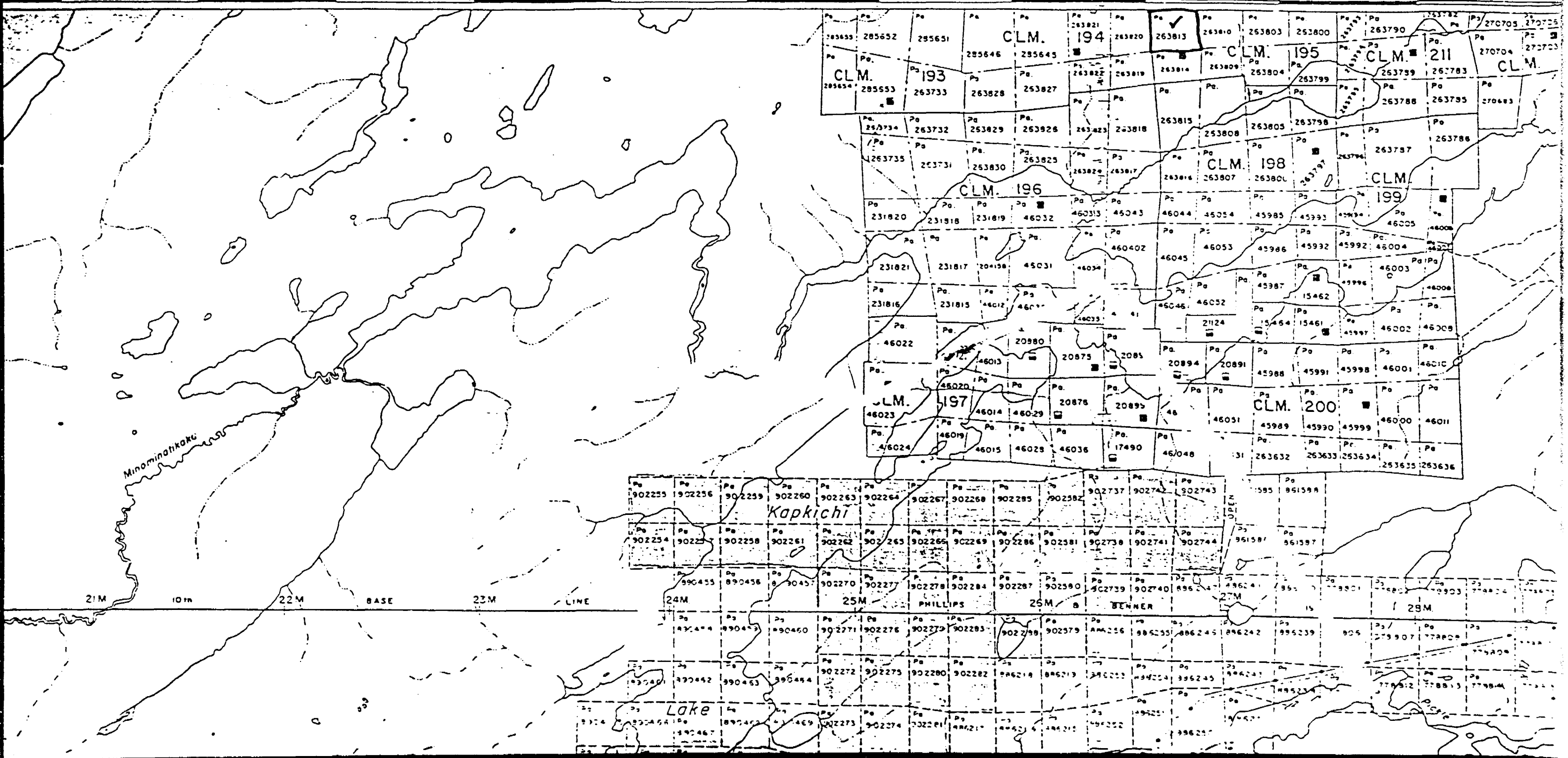


T. Verbeek - D.  
 Manager of Exploration.

DDM 438 38 47 45 4 3 53  
 Excerpta of Claim maps M 2246 2747  
 Kapicheti Lake and Ponsford Lake area.  
 LOCATION OF CLAIMS.  
 Scale: 2" = 1 mile  
 UMEX CORPORATION LTD.

KAPKICHI LK  
M-22 46

40 CHAINS





PONSFORD LAKE M-2141



KAPKICHI LAKE M-2246

900

ONTARIO

A separate form is required for each type of work to be recorded.

#87

THE MINING ACT REPORT OF WORK

To the Recorder of Sioux Lookout Patricia Mining Division

Union Minière Exploration & Mining Corporation Limited T 133

name of Recorded Holder

Miner's Licence

1935 Leslie Street, Don Mills, Ontario

Post Office Address

do hereby report the performance of 3219 days of Diamond Drilling

type of work

not before reported to be applied on the following contiguous claims

Claim No.	Days	Claim No.	Days	Claim No.	Days
263812 to 263814	incl.	133	days each		
263815 to 263825	incl.	100	days each		
263826 to 263830	incl.	80	days each		
285636 to 285638	incl.	60	days each		
285639 to 285642	incl.	100	days each		
285643 to 285648	incl.	60	days each		
286327 to 286334	incl.	60	days each	263813	

All the work was performed on Mining Claim (s) 263813  
(In the case of geological and/or geophysical survey (s) where more than 18 claims are involved attach a schedule)

READ CAREFULLY: THE FOLLOWING INFORMATION IS REQUIRED BY THE MINING RECORDER.

- For Manual Work, Stripping or Opening up of Mines, Sinking Shafts or Other Actual Mining Operations - Names and addresses of the men who performed the work and the dates and hours of their employment.
- For Diamond and other Core Drilling - Footage, No. and angle of holes and diameter of core. Name and address of owner or operator of drill. Dates when drilling was done. Signed core log and sketch in duplicate.
- For Compressed Air or Other Power Driven or Mechanical Equipment
- Type of drill or equipment. Names and addresses of men engaged in operating equipment and the dates and hours of their employment.
- For Power Stripping - Type of equipment. Name and address of owner or operator. Amount expended. Dates on which work was done. Proof of actual cost must be submitted within 30 days of recording.
- With each of the above types of work sketches are required to show the location and extent of the work in relation to the nearest claim post. In the case of diamond or other core drilling the sketch must be submitted in duplicate.
- For Geological and Geophysical Survey - The names and addresses of men employed as well as dates. Type of instrument used in the case of geophysical survey. Reports and maps in duplicate must be filed with the Minister within 60 days of recording.
- For Land Survey - the name and address of Ontario Land surveyor.

The Required Information is as Follows: (Attach a list if this space is insufficient)

- K38, 45° S, depth 547', core size AXQ, drilling perf. Sep 18-Sep 22/70
- K39, 45° S, depth 491', core size AXQ, drilling perf. Sep 24-Sep 29/70
- K47, 45° S, depth 352', core size AXQ, drilling perf. Oct 25-Oct 27/70
- K49, vertical " 499', core size AXQ, drilling perf. Oct 27-Oct 31/70
- K54, vertical " 387', core size AXQ, drilling perf. Nov 24-Nov 26/70
- K57, vertical " 549', core size AXQ, drilling perf. Nov 30-Dec 2/70
- K59, 45° S, depth 394', core size AXQ, drilling perf. Dec 5-Dec 9/70

By Inspiration Drilling, Division of Dresser Industries Canada,  
North Bay, Ontario

T. Verbeek D. Sc. *T. Verbeek*  
Manager of Exploration  
Signature of Recorded Holder or Agent

Date April 8th, 1971

The Mining Act Certificate Verifying Report of Work

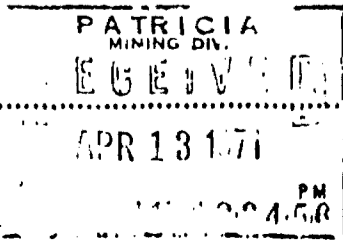
T. Verbeek, D. Sc., Manager of Exploration, Umex Corporation Ltd  
1935 Leslie Street, Don Mills, Ontario  
(Post Office Address)

hereby certify:

1. That I have a personal and intimate knowledge of the facts set forth in the report of work annexed hereto, having performed the work or witnessed same during and/or after its completion.

2. That the annexed report is true.

Dated April 8th 19 71



T. Verbeek D. Sc.  
Manager of Exploration  
Signature

263781

THE PENALTY FOR MAKING A FALSE STATEMENT IN THIS REPORT AND/OR CERTIFICATE IS \$500. OR SIX MONTHS IMPRISONMENT OR BOTH