



520665W0023 520665W0010 LITTLE OCHIG LAKE

010

Diamond Drilling

Area OF LITTLE OCHIG LAKE

Report N^o 10

Work performed by: N. Firth

Claim N ^o	Hole N ^o	Footage	Date	Note
PA 37724	1-1	250'	Jan/68	
	1-4	206'	Jan/68	
PA 37727	1-2	202'	Jan/68	
PA 37737	1-3	469'	Jan/68	
PA 37720	1-5	201'	Feb/68	
PA 37718	1-6	261'	Feb/68	

TOTAL: 6DH 1589'

Notes:

DIAMOND DRILL RECORD

PROPERTY: Pickle Lake Claim Group No.1

HOLE NO: 1-1

SHEET NUMBER: 1

SECTION FROM: 0.0' - 120.0'

STARTED: January 15th, 1968.

LATITUDE: 2050 S

DATUM: Geophysical Survey Grid

COMPLETED: January 16th, 1968.

DEPARTURE: 1020 W

BEARING: S 80° E

ULTIMATE DEPTH: 250.0'

ELEVATION: _____

DIP: -54°

PROPOSED DEPTH: 300.0'

Depth Feet	Formation	Sample No.	Width of Sample	Ni	Zn	Au	Ag
0.0' - 25.0'	Casing small pebbles and boulders encountered last + 4', took a dip test at 30' on account of unsupported casing in lake. etch angle 59° true dip 51°						
25.0' - 110.4'	dark greenish gray, fine grained <u>andesite</u> , numerous fine hairlike white calcite stringers, very minor fine pyrite on fracture planes and slightly disseminated, less than 1%.						
110.4' - 120.0'	heavy mineralization + 80% in light gray silicious mineralization is <u>pyrite</u> and <u>pyrrhotite</u> - ratio 2:1 pyrite to pyrrhotite-pyrite is brassy yellow grains 1/16" - 1/8", while pyrrhotite is dark bronzy brown and fine grained. would appear to be the very odd speck of fine sphalerite - minor calcareous material present						
	110.4' - 120.0'	826	9.6'	N11	0.01	Tr.	Tr.

D. Reutt

DIAMOND DRILL RECORD

PROPERTY: Pickle Lake - Claim Group No. 1.

HOLE NO: 1-1

SHEET NUMBER: 2

SECTION FROM: 120.0' - 141.8'

STARTED: January 15th, 1968.

Depth Feet	Formation	Sample No.	Width of Sample	Ni	Zn	Au	Ag
120.0 - 127.1	Medium grained fine sugary grained dacite, have 1" band of pinkish quartz both at start and finish of section.						
127.1 - 128.7	Highly contorted and graphitic altered - have fine whitish drag folded bands of silicified material; containing some calcareous matter; with blackish graphitic material; † 30 mineralization, mainly pyrrhotite, minor pyrite banding 43' to core.						
128.7 - 129.2	Dacite						
1 129.2 - 130.7	Graphitic zone as before, contorted † 20% fine pyrrhotite, (one spot only in dimethylglyoxime test over 1 1/2")						
		127.1' - 130.7'	827	3.6'	Nil	Nil	Tr.
130.7 - 136.1	Dacite						
136. - 141.8	Altered and contorted zone, graphitic alteration not as intense, some minor light silicious bands, fine pyrrhotite with minor pyrite throughout, - have intense drag folds in order 1" - 1-1/2" around 141'.						
		136.1' - 141.8'	828	5.7'	Tr.	0.01	Tr.

97 feet

DIAMOND DRILL RECORD

PROPERTY: Pickle Lake-Claim Group No. 1 HOLE NO: 1-1

SHEET NUMBER: 3 SECTION FROM: 141.8 - 162.5' STARTED: January 15th, 1968.

Depth Feet	Formation	Sample No.	Width of Sample	Ni	Cu	Ag	Au
141.8 - 155.1	mineralized zone - up to ⁺ 80% but average in order of 66%, with light gray, sugary grained, silicious groundmass pyrite - pyrrhotite ratio approximately 2:1, pyrite in grains 1/16" - 1/8" pyrrhotite fine grained, some minor bands of quartz, odd blackish fragment (negative dimethylglyoxane test at 150')	141.8' - 150.0' 150.0' - 160.0'	829 830	8.2' 10.0'	Nil Tr.	Tr. Tr.	Tr. Tr.
155.1 - 156.0	light gray, finegrained silicious rhyolite.						
156.0 - 160.5	mineralized silicified section - ⁺ 30% mineral, - pyrrhotite - pyrite ratio 1:1 in fine grained, light gray silicious ground mass						
160.5 - 162.5	highly altered irregularly contorted and brecciated black graphitic remnants 50% in silicious groundmass with - 20% pyrrhotite with minor pyrite.	160.0' - 170.0' 170.0' - 180.0'	831 832	10.0' 10.0'	Tr. Tr.	Tr. Tr.	Tr. Tr.

J. Smith

1

DIAMOND DRILL RECORD

PROPERTY: Pickle Lake Claim Gr. 1 HOLE NO: 1 - 1

SHEET NO: 4 SECTION FROM: 162.5 - 197.9 STARTED: January 15th, 1968.

Depth Feet	Formation	Sample No.	Width of Sample	Ni	Zn	Au	Ag
162.5 - 183.5	† 75% mineralization in a light gray fine grained groundmass, pyrrhotite now more abundant than pyrite 2:1, few odd blackish fragments, silicious material often appears as irregularly rounded masses or eyes up to 1" in size.						
	180.0' - 186.5'	833	6.5'	Tr.		Nil	Tr.
183.5 - 184.0	blackish contorted, some graphitic alteration flow type material.						
184.0 - 184.4	dacite.						
184.4 - 186.5	heavily mineralized containing some fragmented and graphitic rock fragments over last foot.						
186.5 - 188.3	brecciated and contorted, graphitic altered, minor pyrrhotite.						
188.3 - 197.9	hybrid gneiss irregular slightly chloritic bands in part drag folded with numerous bands and patches of intense silicification, only minor mineralization, mainly pyrrhotite in irregular bands and patches						

M. Duth

DIAMOND DRILL RECORD

PROPERTY: Pickle Lake Claim Group No 1.

HOLE NO: 1-1

SHEET NUMBER: 5

SECTION FROM 197.9 - 250.0'

STARTED: January 15th, 1968.

Depth Feet	Formation	Sample No.	Width of	Ni	Zn	Au	Ag
197 9 200.4	dark blackish brown, fine grained, brecciated and contorted fragments of graphitic altered material in a silicious groundmass, -approximately 20 % fine pyrrhotite mineralization.						
200 4 207 5	hybrid gneiss numerous dark slightly chloritic bands in a highly silicious ground mass						
207 5 214.0	dark greenish gray, fine grained slightly chloritic andesite, slightly gneissic.						
214 0 250.0	lightish gray, fine to medium grained quartz, feldspar, hornblende gneiss have fine irregular bands of hornblende material in a quartzose ground mass, banding from 40° - 45° to core axis.						
250 0	End of Hole.						

Drilled by Morissette Diamond Drilling

Signed N. Firth

N. Firth

DIAMOND DRILL RECORD

PROPERTY: Pickle Lake Claim Group I HOLE NO: 1-4

STREET NUMBER: 1 of 2

SECTION FROM: 0.0' to 150.0'

STARTED: January 30th, 1968

LATITUDE: 321° 8

DATUM: Geophysical Survey Grid

COMPLETED: January 31st, 1968.

DEPARTURE: 975° W

BEARING: 8 70° E

ULTIMATE DEPTH: 206.0'

ELEVATION: -

DIP: - 45°

PROPOSED DEPTH: 200.0'

Depth Feet	Formation	Sample No.	Width of Sample	Ni	Au	Ag
0.0 - 42.0'	Casing					
42.0 - 126.6'	dark gray, medium grained andesite, very odd thin calcite stringer, very minor odd silicious bleb 1/2" 3" - 4" silicified band 61' and 89.5' odd speck of pyrite.					
126.6 - 137.6'	gradual change to dark gray, fine grained andesite.					
137.6 - 144.0'	altered zone highly silicious with irregular and contorted fragments of andesite, in part graphitic, in a silicious groundmass; ± 10% pyrrhotite - pyrite mineralization.					
144.0 - 150.0'	137.6' - 144.0'	848	6.4'	Nil		Nil
	144.0' - 150.0'	849	6.0'	Tr.		Tr.

PAPER
EUGENE
MAR 25
1968

W. Ditt

DIAMOND DRILL RECORD

PROPERTY: Pickle Lake Claim Group I

HOLE NO: 1-4

SHEET NUMBER: 2 of 2

SECTION FROM: 150.0' - 206.0'

STARTED: January 30th, 1968.

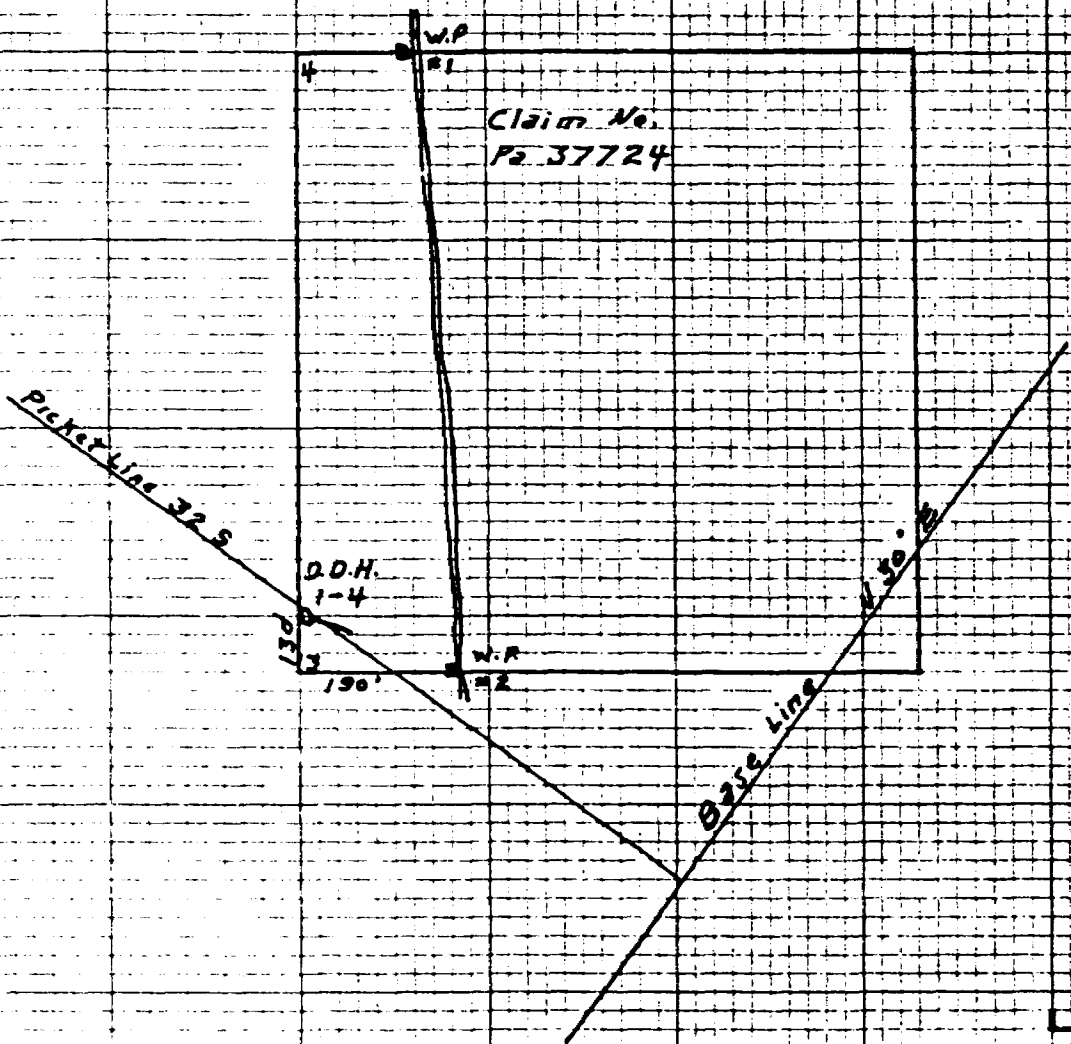
Depth Feet	Formation	Sample No.	Width of Sample	Ni	Au	Ag
150 0	206.0	gradual change to darkish gray, fine grained andesite, numerous hairlike calcite stringers, minor biotite throughout, very minor (less 0.5%) grains and blebs of pyrite and pyrrhotite.				
206 0'	END OF HOLE					

RECEIVED
 E. G. L. & S. L. L.
 1968
 JAN 30 1968

Drilled by: Morissette Diamond Drilling

Signed: N. Firth

N. Firth



REGISTERED
 SURVEYOR
 STATE OF PENNSYLVANIA
 No. 12345
 H. Smith

H. Smith

DIAMOND DRILL RECORD

PROPERTY: Pickle Lake Claim Group 1 HOLE NO: 1 - 2

SHEET NUMBER: 1 SECTION FROM: 0' to 104.8' STARTED: January 19th, 1968.
 LATITUDE: 1960.8 DATUM: Geophysical Survey Grid COMPLETED: January 20th, 1968.
 DEPARTURE: 1830 W BEARING: S 45° E ULTIMATE DEPTH: 202'
 ELEVATION: _____ DIP: - 45° PROPOSED DEPTH: 200'

Depth Feet	Formation	Sample No.	Width of Sample	Ni	Mo	Au	Ag
0.0 - 30.0'	Casing						
30.0 - 56.0'	dark greenish gray, fine grained slightly chloritic andesite, very gneissic, numerous fine white hairlike calcarious stringers odd 1/4" quartz stringers.						
56.0 - 57.9'	dark brownish gray, fine grained andesite color due to biotite rather than chlorite, contact at 53' to core.						
57.9 - 91.0	medium greenish gray, speckled, fine grained, slightly gneissic andesite, numerous fine white hairlike stringers both calcarious and silicious gradual change to						
91.0 - 104.8'	dark gray, fine grained massive andesite, quite basic minor plates of pyrite on odd fracture planes. 1/2" to 1" silicified zones with minor pyrrhotite at 92.5' and 93.0' from 101' on they begin getting fine white hairlike stringers of calcitic material.						

J. Smith

DIAMOND DRILL RECORD

PROPERTY Pickle Lake - Claim Gr. 1 HOLE NO. 1-2

SHEET NUMBER: 2 SECTION FROM: 104.8 - 136.1' STARTED: January 19th, 1968.

Depth Feet	Formation	Sample No.	Width of	Ni	Zn	Au	A ₁
104.8 109.0	dark brownish gray, fine grained, biotite-chlorite gneiss; very numerous 14% - 20% fine irregular hairlike stringers of calcite; banding quite irregular, have bands of fine brownish biotite - pinch and swell; greenish chloritic bands associated with the calcite stringers biotite bands predominant.						
109.0 125.4	dark gray, fine grained andesite, near start have minor faint bands of biotitic material, fairly numerous fine white stringers of calcite, some very minor plates of pyrite fracture planes, 2 - 1" bands of minor silicification with pyrite between 120'-121'						
125.4 127.3	light gray, fine grained quartz porphyry - small eyes of quartz in fine grained darkish ground mass, - contact 63° to core axis.						
127.3 136.1	dark gray, fine grained andesite numerous calcite stringers, most quite fine but up to 1" in width some minor platy pyrite on fracture planes, odd bleb of pyrite and pyrrhotite.						

A. Ruth

DIAMOND DRILL RECORD

PROPERTY: Pickle Lake Claim Group 1

HOLE NO. 1-2

SHEET NUMBER: 3

SECTION FROM: 136.1 - 154.8'

STARTED: January 19th, 1968.

Depth Feet	Formation	Sample No.	Width of Sample	Ni	Cu	Au	Ag
136.1 - 137.9	brownish gray, fine grained, biotitic gneiss, numerous calcite filled fractures.						
137.9 - 142.3	dark gray, fine grained andesite numerous fine grained calcite stringers.						
143.3 - 149.7	medium gray, fine grained, very slightly silicified andesite, have irregular bands and blebs and some finely disseminated pyrrhotite - pyrite mineralization - 5% - 10% odd slip plane has coating of graphite.						
	143.3' - 149.7'	834	6.4	Tr.	0.02	N11	N11
149.7 - 154.8	highly silicified section with some fragments of graphitic alteration, strong drag folding around 154' + 15% pyrrhotite mineralization, minor pyrite couple blebs + chalcopryrite (less than 0.5%) negative dimethylglyoxene.						
	145.0' - 154.8'	835	5.1	0.01	0.11	N11	N11

J. Deeth

1

DIAMOND DRILL RECORDS

PROPERTY: Pickle Lake Claim Group No 1

HOLE NO: 1 - 2

SHEET NUMBER: 4

SECTION FROM: 154.8 - 202.0

STARTED January 19th, 1968.

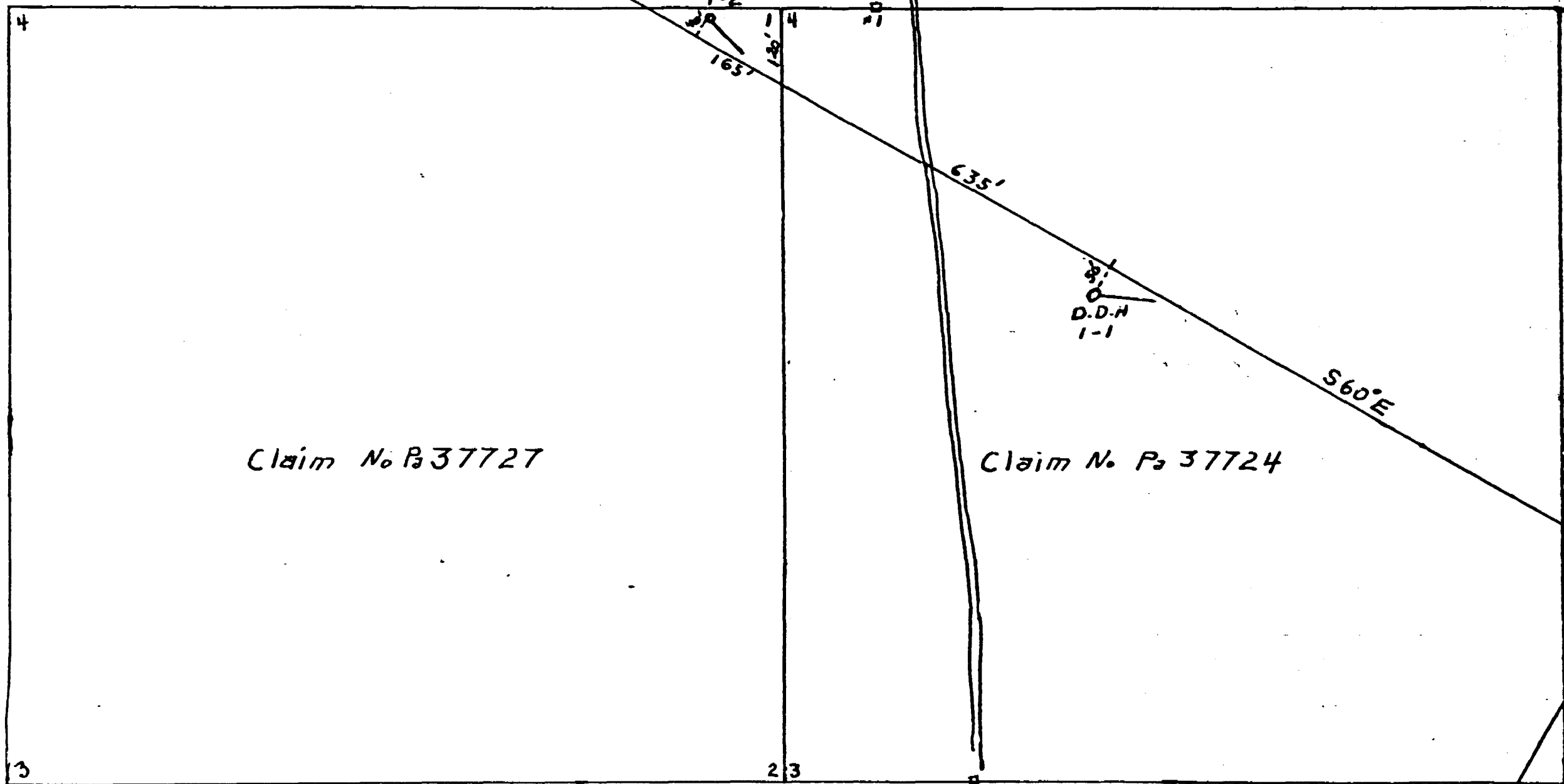
Depth Feet	Formation	Sample No	Width of sample	Ni	Cu	Au	Ag
154.8 - 159.8	slightly silicified biotitic gneiss, some dragfolds, minor graphitic alteration at 159' - 8% mineralization, mainly pyrrhotite.						
	154.8' - 159.8'	836	5.0	Tr.	0.03	Tr.	Nil
159.8 - 170.5	dark gray, fine grained andesite, minor fine pyrrhotite mineralization - 2% both disseminated and as very fine stringers.						
170.5 - 171.4	black fine grained, graphitic altered andesite, very minor fine pyrrhotite.						
171.4 - 184.5	dark gray fine grained andesite, minor fine white calcite stringers.						
184.5 - 193.7	medium greenish gray, fine grained slightly chloritic andesite odd 1/4" - 1/2" brownish biotic band.;						
193.7 - 202.0	dark gray, fine grained andesite.						
202.0	END OF HOLE						

DRILLED BY: Morissette Diamond Drilling

Signed N. Firth

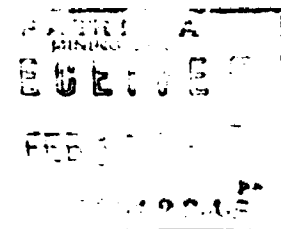
N. Firth

Picket Line 209



Claim No. P 37727

Claim No. P 37724



Scale 1" = 200'

Certified Correct.

M. Butt P. Eng.

DIAMOND DRILL RECORD

PROPERTY: Pickle Lake - Claim Group I

HOLE NO: 1-3

SHEET NUMBER: 1 of 10

SECTION FROM: 0.0' - 89.8'

STARTED: January 24th, 1968.

LATITUDE: 700 N

DATUM: Geophysical Survey Grid

COMPLETED: January 27th, 1968.

DEPARTURE: 180 W

BEARING: S 75° E

ULTIMATE DEPTH: 469.0'

ELEVATION: -

DIP: - 45°

PROPOSED DEPTH: 500.0'

Depth Feet	Formation	Sample No.	Width of Sample	Ni	Au	Ag
0.0' - 28.0'	Casing					
28.0' - 75.9'	dark gray, fine grained andesite, very slightly chloritic, first 10' have numerous fine white hairlike calcite stringers odd 1.4" - 1" light gray silicious band with minor associated pyrite and pyrrhotite, gradual change around 50' to medium grained; 70.5' - 73.0' have zone of fairly numerous fine calcite stringers - some chlorite have matted appearance.					
75.9' - 78.0'	dark mottled brownish gray altered zone - very abundant calcite some silicious bands and patches, ± 5% pyrrhotite - pyrite banding quite contorted and irregular, groundmass fine grained biotitic andesite					
78.0' - 89.8'	dark mottled brownish gray, fine grained biotitic andesite, very abundant fine irregular bands of honey brown biotite some fine white hairlike calcite stringers.					

PAID
E G E O O
MAY 25
1968

H. Smith

DIAMOND DRILL RECORD

PROPERTY: Pickle Lake Claim Group I

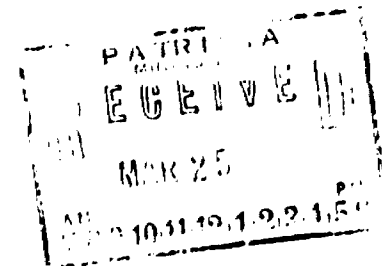
HOVA NO: 1-3

SHEET NUMBER: 2 of 10

SECTION FROM: 89.8' to 149.5'

STARTED: January 24th, 1968.

Depth Feet	Formation	Sample No.	Width of Sample	Ni	Au	Ag
89.8' - 103.0'	dark gray, medium grained, andesite, 2" quartz veinlet at 95.5'.					
103.0' - 104.2'	light gray, fine grained, quartz porphyry have small 1/16" eyes quartz in granite groundmass, contact 55° to core axis					
104.2' - 138.0'	dark greenish gray, medium to coarse grained chloritic andesite, quite massive, becomes finer grained and less chloritic from 126.5' on, and from 130' on have many very fine white hairlike calcite stringers.					
138.0' - 146.3'	silicified alteration zone, irregular and contorted banding, in part graphitic remnants of andesite in silicified groundmass, fairly abundant fine calcite have + 15% pyrrhotite mineralization as blebs and stringers, some minor bands containing pinkish fine garnets in last foot.	837	8.3'	Tr.	Ni	Ag
146.3' - 149.5'	medium gray, fine grained highly silicified - almost cherty.					



7-210

DIAMOND DRILL RECORD

PROPERTY: Pickle Lake Claim Group I

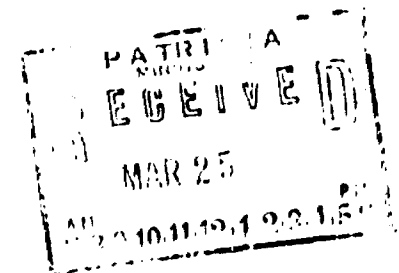
HOLE NO: 1 - 3

SHEET NUMBER: 3 of 10

SECTION FROM: 149.5' to 172.3'

STARTED: January 24th, 1968.

Depth Feet	Formation	Sample No.	Width of Sample	Wt	Au	Ag
149.5' - 156.4'	silicified alteration zone with some graphitic alteration, fine irregular and contorted banding, some cherty sections, some minor garnets in darker bands \pm 7% fine pyrrhotite mineralization.					
	149.5' - 156.4'	838	6.9'	Tr.	Nil	Nil
156.4' - 162.8'	chloritic bands and fragments of andesite cemented by very numerous calcite stringers and veinlets, some garnets present in bands and patches.					
162.8' - 171.4'	light yellowish gray, fine grained, highly silicified sericitic gneiss, have light yellow highly contorted and drag folded sericitic bands in a light bluish gray silicious groundmass, odd minor 1/2" - 1" dark bands containing pinkish garnets have \pm 5% pyrrhotite - pyrite mineralization as very fine stringers and disseminated.					
171.4' - 172.3'	greenish gray, fine grained andesite, minor calcite stringers.					



H. Reith

DIAMOND DRILL RECORD

PROPERTY: Pickle Lake Claim Group I HOLE NO: 1-3

SHEET NUMBER: 4 of 10 SECTION FROM: 172.3' - 206.3' STARTED: January 24th, 1968.

Depth Feet	Formation	Sample No.	Width of Sample	Bi	Au	Ag
172.3' - 175.6'	silicified zone - minor bands and patches of chloritic andesite in fine grained bluish silicious groundmass, minor pyrite and pyrrhotite.					
175.6' - 183.6'	dark gray, fine grained andesite, numerous fine calcite stringers					
183.6' - 189.0'	medium yellowish gray, fine grained silicified zone, some fine yellowish bands containing sericite, have irregular darkish bands of highly silicified andesite containing some fine garnets in a bluish silicious groundmass + 5% pyrrhotite - pyrite mineralization usually along bedding planes, 1 bleb of chalcopyrite noted.					
	183.6' - 189.0'	840	5.4'	Nil	Nil	
189.0' - 209.35'	dark greenish gray, medium grained andesite, some minor fine calcite stringers.					
203.5' - 206.3'	mottled dark brownish gray, medium grained slightly silicious biotitic andesite - have irregular clots and bands containing brownish biotite within slightly silicious andesite.					

PAYROLL
 E U E I V E
 MAR 25
 10442012015

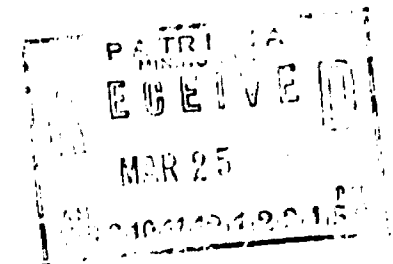
H. Rist,

DIAMOND DRILL RECORD

PROPERTY: Pickle Lake Claim Group I HOLE NO: 1-3

SHEET NUMBER: 5 of 10 SECTION FROM: 206.3' to 259.5' STARTED: January 24th, 1968.

Depth Feet	Formation	Sample No.	Width of Sample	Ni	Au	Ag
206.3' - 229.2'	dark greenish gray, medium grained slightly gneissic andesite, some fine hairlike calcite stringers, slightly chloritic					
229.2' - 234.7'	medium gray, fine sugary grained dacite, very slightly porphyritic.					
234.7' - 240.1'	chloritic andesite.					
240.1' - 242.5'	dacite - contains 1 - 2" band andesite					
242.5' - 246.4'	chloritic andesite (1 - 3" dacite band)					
246.4' - 248.0'	dacite					
248.0' - 248.5'	andesite					
248.5' - 250.1'	dacite					
250.1' - 252.9'	andesite					
252.9' - 255.3'	dacite					
255.3' - 259.5'	andesite					



M. Rutz

DIAMOND-DRILL RECORD

PROPERTY: Pickle Lake Claim Group I

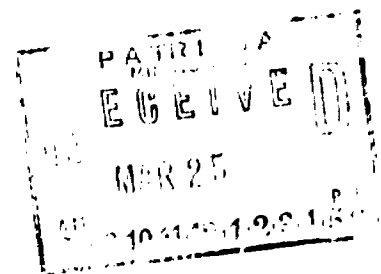
BOX NO: 1-3

SHEET NUMBER: 6 of 10

SECTION FROM: 259.5' to 351.2'

STARTED: January 24th, 1968.

Depth Feet	Formation	Sample No.	Width of Sample	Ni	Au	Ag
259.5' - 273.2'	medium gray, fine grained slightly porphyritic dacite - very small eyes of quartz, odd fine quartz stringer.					
273.2' - 282.5'	dark greenish gray, medium grained chloritic andesite, odd fine white stringer of calcite.					
282.5' - 283.4'	slightly porphyritic dacite.					
283.4' - 320.3'	dark greenish gray, medium grained, chloritic andesite, odd fine white stringer of calcite.					
320.3' - 351.2'	weak banded iron formation have erratically distributed 1/16" bands of fine magnetite in a light gray silicious groundmass, quite often have very thin selvage of light lime green on each side of magnetite band, from 325' bedding in places is less distinct and magnetite is as more erratic stringers and blebs and disseminated in yellowish tinged sericitic groundmass more prevalent in highly disturbed areas, bedding planes both undisturbed and highly distorted and drag folded; where undisturbed bands at 68' to core axis; some fine					



H. Rutt

DIAMOND DRILL RECORD

PROPERTY: Pickle Lake Claim Group I HOLE NO: 1-3

SHEET NUMBER: 7 of 10 SECTION FROM: 320.3' to 370.7' STARTED: January 24th, 1968.

Depth Feet	Formation	Sample No.	Width of Sample	Fe	Au	Ag
320.3' - 351.2' (cont'd)	pyrrhotite and pyrite + 10% both finely disseminated and in thin bands with odd large blebs and bands of pyrrhotite, from 340' on pyrrhotite content very much increased + 25%					
	328.3' - 330.0'	841	9.7'	Nil	Tr.	Tr.
	330.0' - 340.0'	842	10.0'	Tr.	Tr.	Nil
	340.0' - 350.0'	843	10.0'	Nil	Tr.	Tr.
351.2' - 365.8'	highly altered andesite - dark gray to black - silicious and graphitic alteration, abundant pyrrhotite + 30%, minor pyrite, in part highly irregular and contorted banding numerous quartz veinlets 1.4" - 1"					
		844	10.0'	Tr.	Nil	Nil
		845	5.8'	Nil	Nil	Nil
365.8' - 370.2'	gradual change over 1st foot to dark greenish gray medium grained chloritic andesite, fine and barely distinct irregular wavy banding minor calcite in groundmass.					
370.2' - 370.7'	medium gray, fine sugary grained porphyritic dacite, minor fine quartz eyes.					

P 5120
 E 16 E 1 V 2
 MAR 25
 1968

J. Ritt

DIAMOND DRILL RECORD

PROPERTY: Pickle Lake Claim Group 1

HOLE NO: 1-3

SHEET NUMBER: 8 of 10

SECTION FROM: 370.7' to 418.4'

STARTED: January 24th, 1968.

Depth Feet	Formation	Sample No.	Width of Sample	Ni	Au	Ag
370.7' - 374.6'	chloritic andesite (as above).					
374.6' - 377.7'	dark gray, fine grained quartz hornblende gneiss - very fine white specks in basic groundmass, $\pm 5\%$ very finely disseminated pyrrhotite and pyrite aligned along faint bedding planes.					
377.7' - 385.6'	dark gray, fine grained andesite.					
385.6' - 415.3'	medium gray speckles, medium grained porphyry, very numerous fine 1/16" white irregular eyes - quartz and feldspar, in dark basic groundmass, which in part is biotitic (would appear to be extrusive rather than intrusive) - last foot gradual change to fine grained and negligible "eyes".					
415.3' - 418.4'	weak banded iron formation, thin 1/16" bands magnetite and pyrrhotite from approximately 25% of rock groundmass is bluish gray-silicious, pyrrhotite would appear in part to have replaced magnetite.					

415.3' - 418.4'

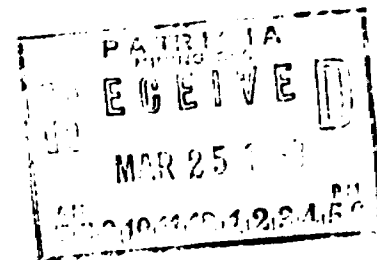
846

8.2'

N11

N11

N11



A

H. Rieth

DIAMOND DRILL RECORD

PROPERTY: Pickle Lake Claim Group I

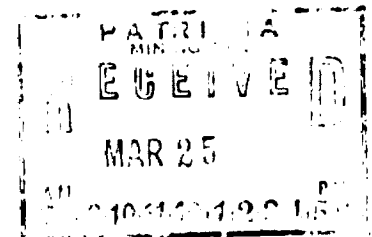
HOLE NO: 1-3

SHEET NUMBER: 9 of 10

SECTION FROM: 418.4' to 442.7'

STARTED: January 24th, 1961

Depth Feet	Formation	Sample No	Width of Sample	Ni	Au	Ag
418.4' - 423.5'	highly altered andesite, mainly silicified minor graphitic alteration, remnants irregular and chloritic, fairly abundant calcite, few 1" bands containing pinkish garnets, some irregular stringers and blebs of pyrrhotite + 10%.					
423.5' - 426.7'	darkish gray fine grained dacite					
426.7' - 427.6'	highly altered andesite, silicious and graphitic + 20% pyrrhotite.					
427.6' - 430.1'	largely quartz - 60% rest irregular bands, largely pyrrhotite with some coarse pyrite and ghostly remnants of graphitic host rock					
	427.6' - 430.1'	847	3.4'	Ni1	Ni1	Ni1
430.1' - 437.3'	dark gray, fine grained andesite, highly fractured with fractures sealed with calcite.					
437.3' - 442.7'	medium gray, fine grained dacite					



N. Smith

DIAMOND DRILL RECORDS

PROPERTY: Pickle Lake Claim Group I HOLE NO: 1-3

SHEET NUMBER: 10 of 10 SECTION FROM: 442.7' to 469.0' STARTED: January 24th, 1968.

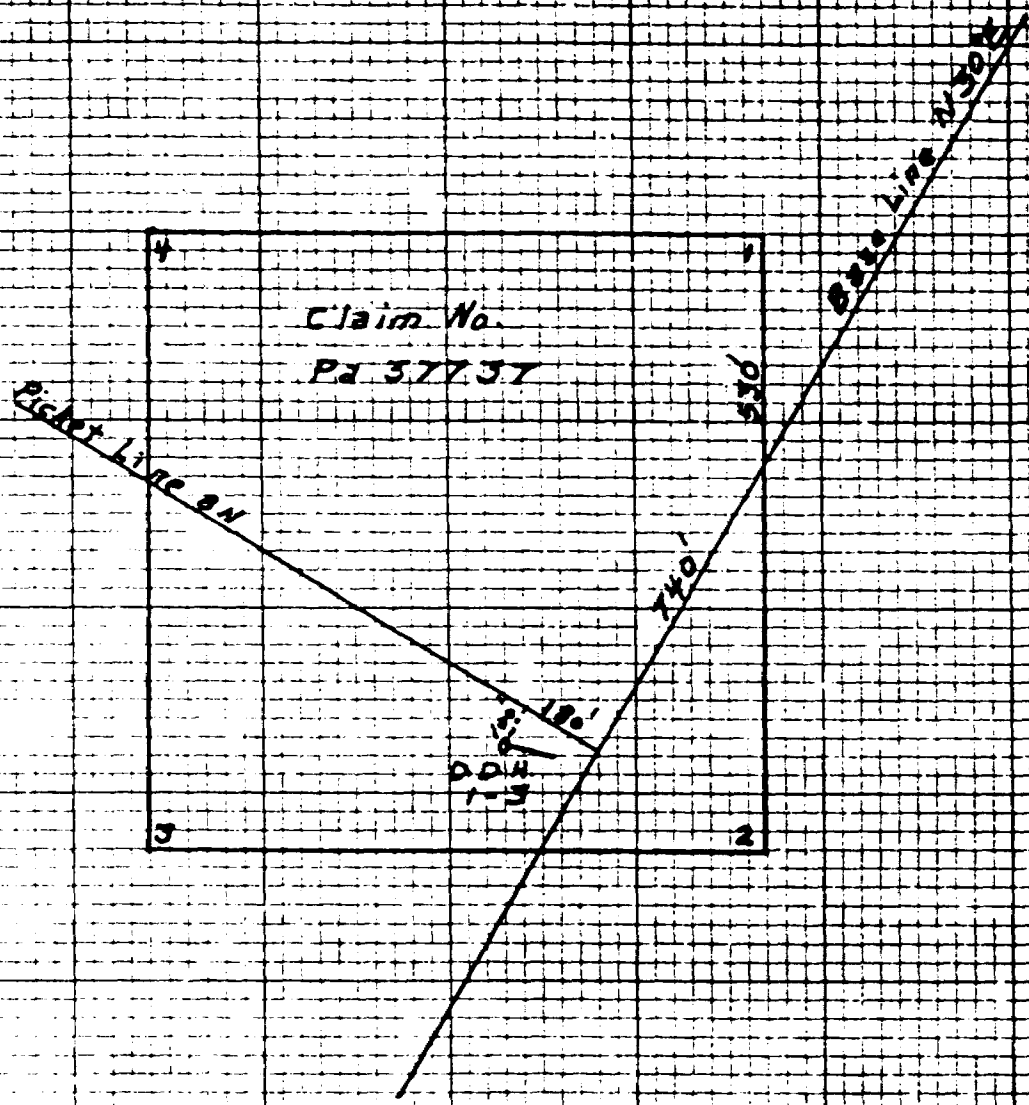
Depth Feet	Formation	Sample No.	Width of Sample	Ni	Au	Ag
442.7' - 446.0'	light gray, fine grained quartzose rock, only a hint of remnants of former rock as nearly completely replaced by silica.					
446.0' - 460.8'	dark gray, fine grained andesite, quite fractured with fractures sealed with mainly calcite 1/4" - 1" only minor quartz stringers.					
460.8' - 462.3'	white quartz.					
462.3' - 469.0'	dark gray fine grained andesite numerous calcite stringers.					
469.0'	END OF HOLE					

PATRICIA
 RECEIVED
 MAR 25 1968
 10:00 AM

Drilled by: Morissette Diamond Drilling

Signed: N. Firth

N. Firth



Scale 1" = 40'

PATRICIA
MINING CO.
RECEIVED
MAR 25 1912
10412212RA54

M. Smith

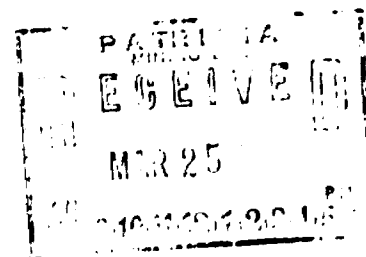
DIAMOND DRILL RECORD

PROPERTY: Pickle Lake - Claim Group I

HOLE NO: 1-5

SHEET NUMBER: 1 of 3 SECTION FROM: 0.0' to 107.7' STARTED: February 4th, 1968.
 LATITUDE: 52° 8 DATUM: Geophysical Survey Grid COMPLETED: February 5th, 1968.
 DEPARTURE: 103° W BEARING: S 70° E ULTIMATE DEPTH: 201.0'
 ELEVATION: - DIP: - 45° PROPOSED DEPTH: 250.0'

Depth Feet	Formation	Sample No.	Width of Sample	Ki	Au	Ag
0.0' - 14.0'	Casing					
14.0' - 16.8'	medium gray fine grained silicified sone - have irregular bands and patches of slightly chloritic andesite in faintly gneissic silicified groundmass					
16.8' - 74.0'	medium gray, fine grained andesi. - have innumerable clots and irregular wavy bands and patches of biotite - chlorite within a slightly lighter andesite groundmass in places have a slight gneissic affect, very abundant, highly irregular white calcite stringers 1/16" - 1/2" in thickness, few minor 1/4" silicious bands, gradual change to					
74.0' - 107.7'	darkish gray, fine grained andesite, massive, had gradual decrease in biotitic - chloritic material, only minor calcite stringers					



M. Smith

DIAMOND DRILL RECORD

PROPERTY: Pickle Lake Claim Group I

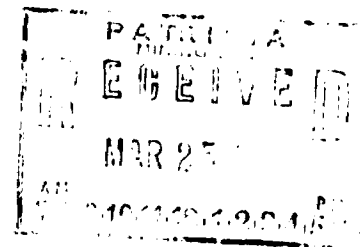
HOLES NO: 1-5

SHEET NUMBER: 2 of 3

SECTION FROM: 107.7' to 141.1'

STARTED: February 4th, 1968.

Depth Feet	Formation	Sample No.	Width of Sample	Ni	Au	Ag
107.7' - 122.6'	darkish gray, fine to medium grained slightly gneissic andesite, have fine irregular clots and bands of biotite, minor white calcite stringers, odd patch dark bluish gray silicification.					
122.6' - 135.8'	dark gray, fine grained andesite, very minor calcite stringers, 4" band silicification at 131.5'					
135.8' - 136.2'	altered zone - highly silicified, minor graphitic alteration, fine disseminated pyrrhotite - pyrite					
136.2' - 141.1'	light gray, fine grained porphyritic dacite, have 1/16" quartz "eyes".					



H. Ruth

DIAMOND DRILL RECORD

PROPERTY: Pickle Lake Claim Group I

HOLE NO. 1-5

SHEET NUMBER: 3 of 3

SECTION FROM: 141.5' to 201.0'

STARTED: February 4th, 1968.

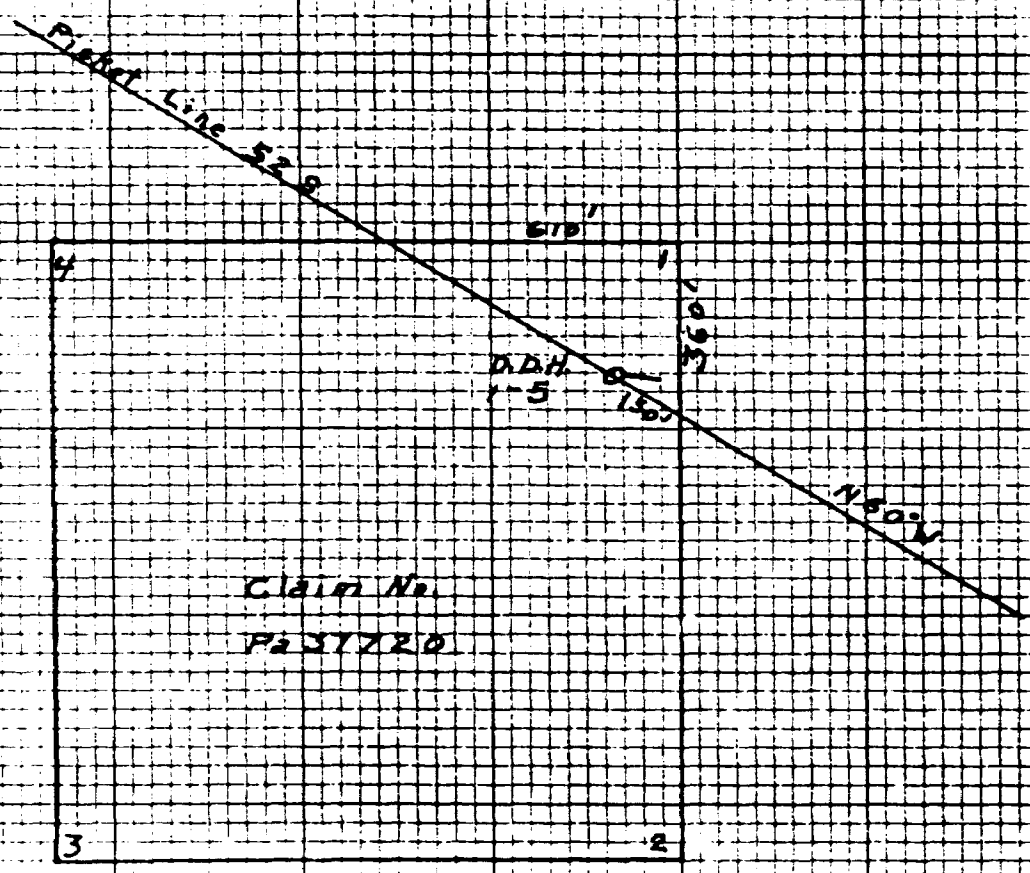
Depth Feet	Formation	Sample No.	Width of Sample	Ni	Au	Ag
141.5' - 167.2'	highly contorted alteration zone varies in color from nearly black to light gray - quite mottled, the light gray is intense silicification while the dark portions have irregular and highly contorted rock fragments altered by graphite in a silicious groundmass, fairly abundant calcite, both as stringers and fine fine grains within the groundmass, pyrrhotite -pyrite mineralization + 15% throughout, as blebs, stringers and fine disseminations.	850 851 852	8.9' 10.0' 7.2'			
167.2' - 168.0'	darkish gray, fine grained andesite - quite broken					
168.0' - 169.0'	lost core (believe possible fault zone)					
169.0' - 201.0	medium gray fine grained andesite minor fine calcite stringers.					
201.0'	END OF HOLE					

PAID TO
EUGENE
MAR 25
1968

Drilled by: Morissette Diamond Drilling

Signed: N. Firth

N. Firth



Claim No.
Pa 37720

Scale 1" = 400'

H. Smith

DIAMOND DRILL RECORD

PROPERTY: Pickle Lake Claim Group No 1

BOLE NO: 1-6

SHEET NUMBER: 1 of 7

SECTION FROM: 0.0' to 42.6'

STARTED: February 11th, 1968.

LATITUDE: 7670 S

DATUM: Geophysical Survey Grid

COMPLETED: February 13th, 1968.

DEPARTURE: 990 'E

BEARING: N 85° E

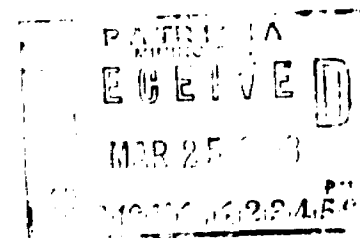
ULTIMATE DEPTH: 261.0'

ELEVATION: _____

DIP: - 45°

PROPOSED DEPTH: 250.0'

Depth Feet	Formation	Sample No.	Width of Sample	Ni	Au	Ag
0.0 - 30.0'	Casing					
30.0 - 32.7'	light gray, fine grained, highly silicious rhyolite - + 15% pyrrhotite, as irregular blebs and stringers.					
32.7 - 33.5'	blackish, fine grained highly altered rhyolite - graphitic alteration + 15% pyrrhotite.					
33.5 - 35.0'	lost core					
35.0 - 37.9'	dark blackish gray, fine grained, highly altered rhyolite - silicious and graphitic in places have fine contorted banding + 15% pyrrhotite.					
37.9 - 42.6'	light gray, fine grained, highly silicious rhyolite, abundant pyrrhotite, first foot 50% remainder 15% - 20%					
	30.0' - 42.6'	853	12.6'	N11	Trace	



W. Ruth

DIAMOND DRILL RECORD

PROPERTY: Pickle Lake Claim Group No. 1

SOLE NO: 1-6

SHEET NUMBER: 2 of 7

SECTION FROM: 42.6' to 89.0'

STARTED: February 11th, 1968.

Depth Feet	Formation	Sample No.	Width of Sample	Ni	Au	Ag
42.6 - 44.0'	lost core					
44.0 - 45.6'	mineralized rhyolite					
45.6 - 58.2'	highly irregular and contorted, light gray to black graphitic altered rhyolite - have rhyolite bands, fragments highly broken and contorted (approx. 33%) in a dense blackish groundmass; 25% pyrite usually in cubic form surrounded by fine grained pyrrhotite.					
	44.0' - 58.2'	854	14.2'	Nil	Trace	
58.2 - 66.3'	pyrrhotite mineralization - + 75% have numerous semi-rounded fragments 1/8" - 1/2" of rhyolite in a pyrrhotite groundmass, only minor pyrite.					
	58.2' - 68.7	855	10.5'	Nil	Trace	
66.3 - 68.7'	white glassy quartz with + 20% pyrrhotite.					
68.7 - 89.0'	light gray, fine grained rhyolite very minor fine disseminated pyrite.					

PAID
E 6 2 1 V 2 1 0
MAR 25
1968

N. Ruth

DIAMOND DRILL RECORD

PROPERTY: Pickie Lake Claim Group No. 1

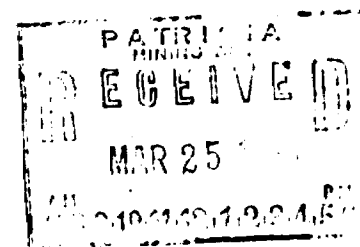
HOLE NO: 1-6

SHEET NUMBER: 3 of 7

SECTION FROM: 89.0' to 155.3'

STARTED: February 11th, 1968.

Depth Feet	Formation	Sample No.	Width of Sample	Ni	Au	Ag
89.0 - 91.8'	pyrrhotite ± 75%; fragments of rhyolite, small amount of pyrite as coarse grains and nodules.					
91.8 - 134.8'	light gray, fine grained rhyolite, minor disseminated pyrite, minor glassy quartz stringers, 6" bands of heavy pyrrhotite mineralization at 108.5' and 114.0'.					
134.8 - 140.4'	pyrite - pyrrhotite (1:1) mineralization 75%; irregular silicious fragments of rhyolite; pyrite as coarse grains and cubes in fine grained pyrrhotite.					
140.4 - 142.0'	light gray, fine grained rhyolite.					
142.0 - 146.6'	light gray, fine grained rhyolite.					
	134.8' - 146.6'	856	11.8'			
146.6 - 155.3'	light gray, fine grained, very silicious rhyolite, some fine irregular bands containing pyrite, pyrrhotite, calcite and chlorite - mineralization ± 5% odd 1" band of heavy pyrite, in part rhyolite almost completely replaced by silica.					
	146.6' - 155.3'	857	8.7'			



M. Smith

DIAMOND DRILL RECORD

PROPERTY: Pickle Lake Claim Group No. 1

HOLE NO: 1-6

SHEET NUMBER: 4 of 7

SECTION FROM 155.3' to 190.3'

STARTED: February 11th, 1968.

Depth Feet	Formation	Sample No.	Width of Sample	Ni	Au	Ag
155.3 - 157.1'	numerous blackish brown bands of biotite and chlorite within a highly contorted silicified rhyolite - \pm 15% pyrite with minor pyrrhotite.					
157.1 - 168.7'	highly silicified rhyolite containing \pm 15% mineralization erratically distributed - mainly pyrrhotite - some pyrite - minor calcite and chlorite.					
	155.3' - 168.7'	858	13.4	Nil	Nil	
168.7 - 176.2'	light gray, fine grained, silicious rhyolite, minor fine disseminated pyrite, some minor quartz veinlets.					
176.2 - 180.8'	highly mineralized (40%) silicious rhyolite - mainly pyrrhotite, some pyrite.					
180.8 - 187.5'	light gray, fine grained silicious rhyolite, minor pyrrhotite and pyrite mineralization.					
187.5 - 190.3'	highly mineralized (\pm 50%) silicious rhyolite, mainly pyrrhotite, some pyrite.					
	176.2' - 190.3'	859	14.1	Nil	Nil	

PATENT
 FEBRUARY 25 1968
 MAR 25
 1968

N. Ruth

DIAMOND DRILL RECORD

PROPERTY: Pickle Lake Claim Group No. 1 HOLE NO: 1-6

SHEET NUMBER: 5 of 7 SECTION FROM: 190.3' to 220.2' STARTED: February 11th, 1952

Depth Feet	Formation	Sample No.	Width of Sample	NI	KU	As
190.3 - 202.3'	light gray, fine grained, silicious rhyolite, minor patches and stringers of pyrrhotite, minor 1/4" bands biotite and chlorite.					
202.3 - 211.9'	medium gray, medium grained, quite silicious and mineralized rhyolite tuff approximately 15% pyrrhotite, numerous, irregular chlorite - biotite rich bands, have fairly abundant calcite.					
211.9 - 216.2'	medium gray, medium grained rhyolite tuff - groundmass has slight mottled and fibrous look, some minor 1/2" - 1.0" bands of biotite-chlorite - minor pyrrhotite stringers and disseminations ± 5%.					
	202.3' - 216.2'	860	13.9'	NI		
216.2 - 220.2'	largely white silica with ghostly patches (20%) of biotitic - chloritic material ± 15% pyrrhotite with minor pyrite, minor calcite					
	216.2' - 226.3'	861	10.1'	NI		

PATROL
 RECEIVED
 MAR 25
 1952

N. Riitt

DIAMOND DRILL RECORD

PROPERTY: Pickle Lake Claim Group No. 1

HOLE NO: 1-6

SHEET NUMBER: 6 of 7

SECTION FROM: 220.2' to 246.6'

STARTED: February 11th, 1968.

Depth Feet	Formation	Sample No.	Width of Sample	Ni	Au	Ag
220.2 - 226.5'	medium gray, fine grained silicious rhyolite - + 10% pyrrhotite - pyrite mineralization as stringers and disseminations.					
226.5 - 231.0'	light gray, fine grained, silicious rhyolite.					
231.0 - 239.5'	weak iron formation - have 6" to 1' bands of light gray silica interdispersed with 1" to 4" bands of light yellowish gray fine grained silicious groundmass with minor fine calcite; containing abundant fine grained magnetite.					
239.5 - 244.6'	light gray, fine grained silica, minor pyrrhotite stringers and odd chloritic band					
244.6 - 245.3'	dark gray, fine grained quartz hornblende gneiss.					
245.3 - 246.6'	weak iron formation - mainly silica with odd 1" - 2" bands - slightly chloritic containing fine magnetite.					

RECEIVED
EUGENE V. BROWN
MIR 25
1968

N. Smith

DIAMOND DRILL RECORD

PROPERTY: Pickle Lake Claim Group No. 1

HOLE NO: 1-6

SHEET NUMBER: 7 of 7

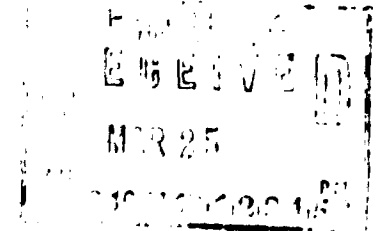
SECTION FROM: 246.6' to 261.0'

STARTED: February 11th, 1968.

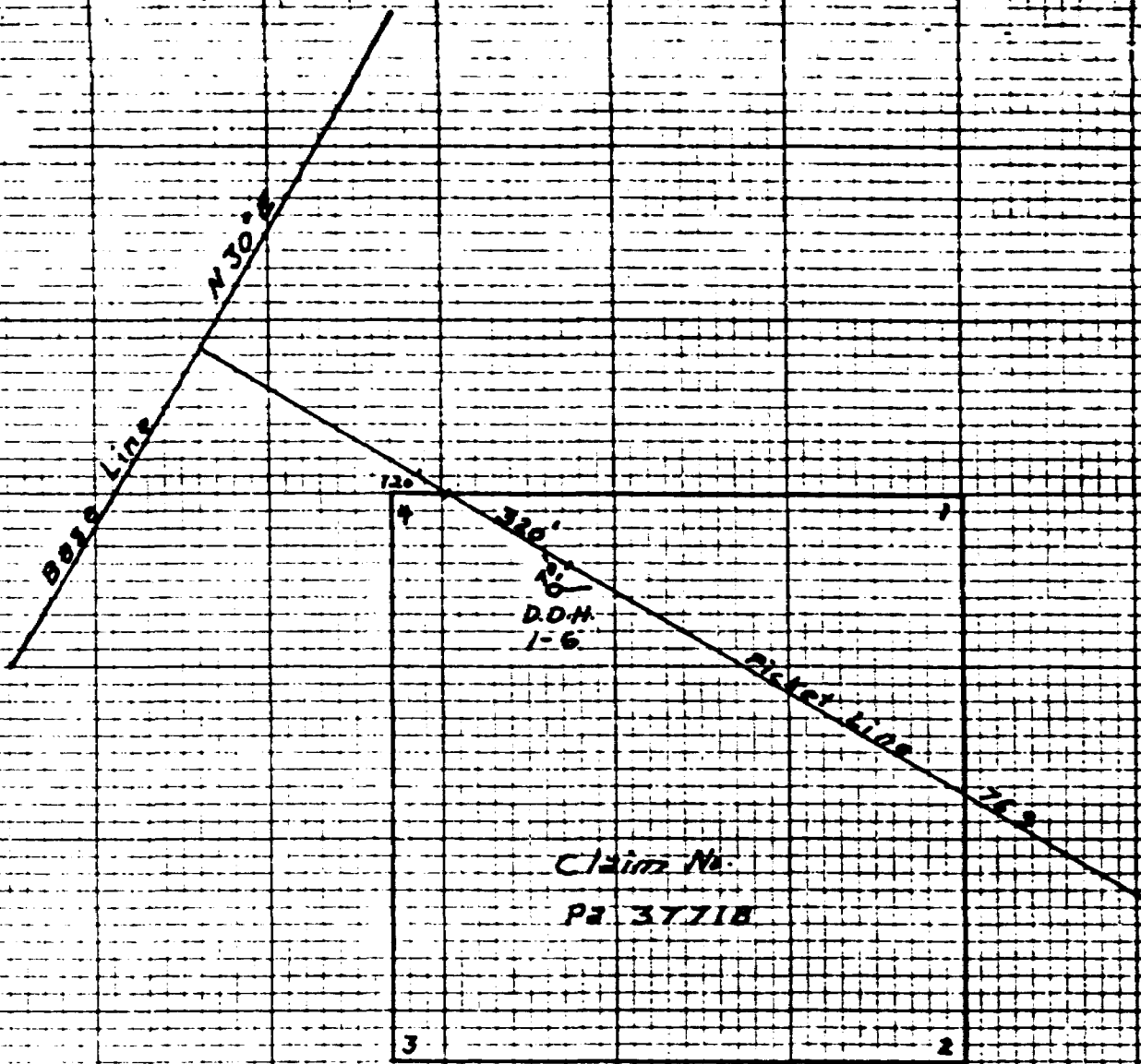
Depth Feet	Formation	Sample No	Width of Sample	Ni	Au	Ag
246.6 - 248.0'	dark gray, fine grained quartz hornblende biotite gneiss - some minor fine disseminated pyrite - minor calcite.					
248.0 - 260.0'	weak iron formation - have silica rich bands 1.0' to 1.5' wide interdispersed by 2" - 6" bands of slightly chloritic material containing fairly abundant fine magnetite.					
260.0 - 261.0'	dark brownish gray chloritic schist.					
261.0 -	END OF HOLE					

Drilled by: Morissette Diamond Drilling

Signed: N. Firth



N. Firth



Claim No.
Pa 37718

PATENT
OFFICE
11125
11125

Scale 1" = 400'

H. Rusk



DEPARTMENT OF MINES

PATRICIA MINING DIVISION

SIOUX LOOKOUT, ONTARIO

?



520885W0023 520885W0010 LITTLE OCHIG LAKE

900

February 14, 1968

Dr. J. C. Davies,
Resident Geologist,
Ontario Department of Mines,
203 Main Street,
KENORA, Ontario.

PA 73
NTS
52-0-7/SE

Dear Sir:

Re: Kawinogans Lake area 2247

Please find enclosed diamond drill logs
and sketches covering assessment work submitted by
C. C. Huston, 2001-80 Richmond Street West, Toronto,
Ontario.

Yours very truly,


K. R. Clemiss,
Mining Recorder.

KRC/mj
encls.



ONTARIO

DEPARTMENT OF MINES

PATRICIA MINING DIVISION

SIOUX LOOKOUT, ONTARIO

807 737-2100

March 25, 1968


Dr. J. C. Davies,
Ontario Department of Mines,
Resident Geologist,
203 Main Street,
KENORA, Ontario.

Dear Sir:

Re: Kapkicki Lake Map sheet 2246
Kawinogans Lake " 2247

Please find enclosed diamond drill logs and sketches for assessment work completed by C. C. Euston and Associates, 2001 - 80 Richmond St. W., Toronto, Ont.

Yours very truly,

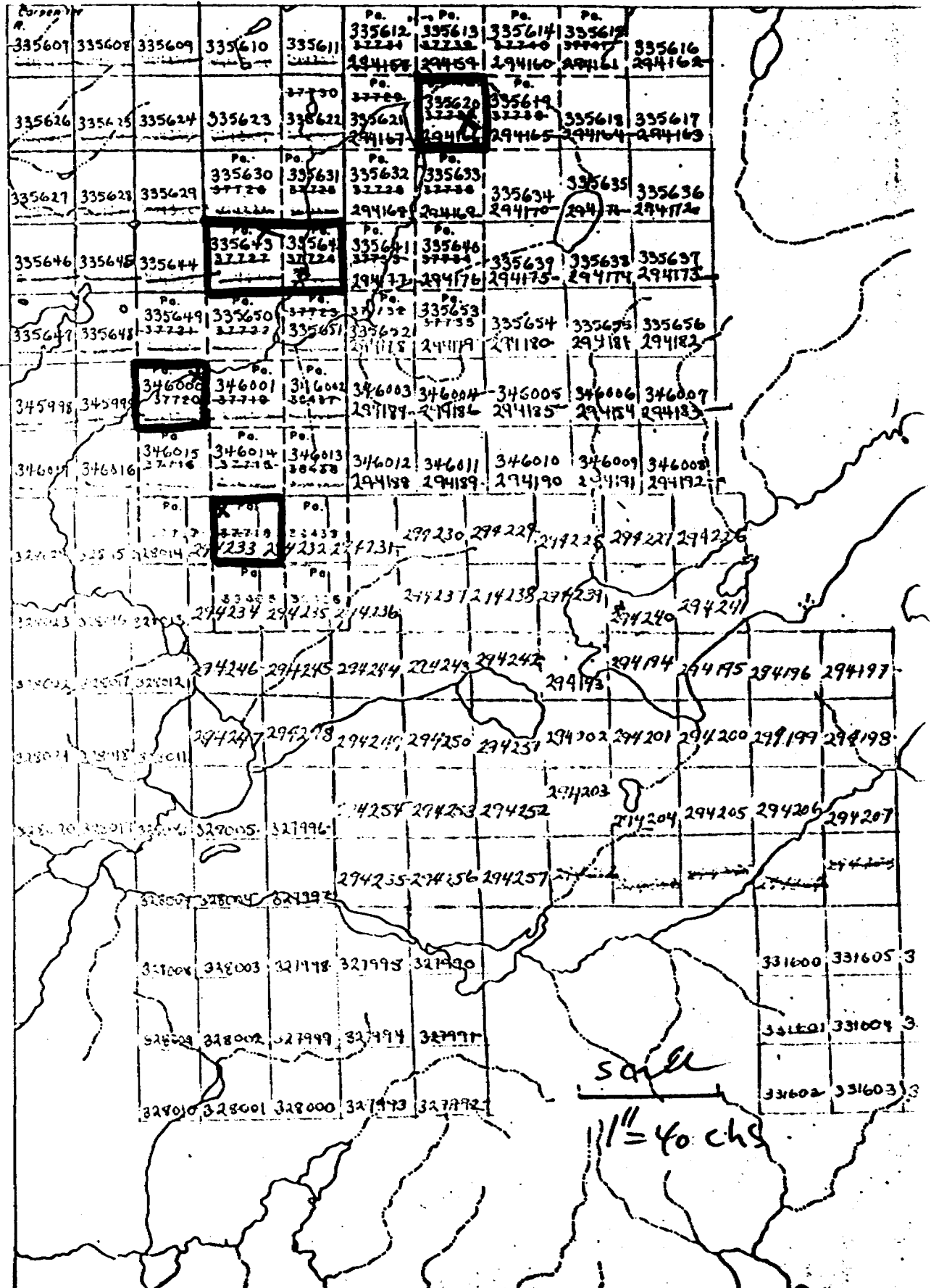

K. R. Clemiss,
Mining Recorder.

KRC/mj
encs.

90° 30' 00"

LITTLE OHIO LAKE M-3188

51° 22' 30"



NE AREA M-3048

SAIL
11" = 40 chs