



52009SE0134 52008NE0032 TARP LAKE

010

NOTE: An attempt has been made to translate this report from old , or very poor quality field notes. Any errors/ omissions in this translation are not the responsibility of the Ontario Ministry of Natrual Resources. The original field notes are in the possession of the Resident Geologist at Sioux Lookout, Ontario.

PICKLE CROW SPECIMENS

- F 65-1 Claim 728, - 150' S. on trail from creek  
intermed breccia type - contains patches of ferric minerals.
- F65-2 Southeast of pond and to the east of Claim 761 where  
trail is last known - 170' from claim line, light  
coloured siliceous rock with elongated lenticules of  
ferromagnesian minerals.
- F65-3 Chert boulder in circle of trench claim 2011, line 96.
- F65-4 - O/C west side line 94 - same location as 65-3
- F65-6 - Outcrop area (6), line 96, claim 2011 - large outcrop  
near south boundary.
- F65-7 - South of sand pit and south of main road to the west of  
Claim 762. - leucoxene? basalt

**DUPLICATE COPY  
POOR QUALITY ORIGINAL  
TO FOLLOW**

## Pickle Crow Specimens

- F65-1 - claim 728, - 150' S. on trail from creek - interbedded basalt type. - contains patches of fine mica
- F65-2 - Southeast of pond <sup>and</sup> to the east of claim 96 / where trail is <sup>last</sup> known - 170' from claim line, light coloured siliceous rock with elongated lenticules of ferromagnesian minerals
- F65-3 - chert boulder? in creek / trench claim 2011, line 96.
- F65-4 - o/c w. side line 96 same location as F65-3
- F65-6 - <sup>outcrop</sup> ditch area (6), line 96, claim 2011 - large o/c <sup>near</sup> south boundary
- F65-7 - S. of Sand pit and S. of main road to the <sup>west</sup> of <sup>off</sup> claim 762. - leucosene? basalt

- F65 - 8            I.F. on Line 112  
                  350' S. of main Road
- F65 - 9            Description (9)  
                  V5m N. Side O/C
- F65 - 10           Description (10) East Side  
                                  (10A - West Side
- F65 - 11           Description 11  
                  Breccia - 2 specs.
- F65 - 12 -        location 12 - South side of outcrop over Vr.
- F65 - 13           Argillite - Claim 730
- F    - 14           Fold porp. dike - Claim 729
- F    - 15           Basalt m.g. - large O/C S. of highway and  
                  west of creek crossing - Central Patricia No.2

**DUPLICATE COPY  
POOR QUALITY ORIGINAL  
TO FOLLOW**

F65-8 - 1. F. on line 112  
350' S. of main road

F65-9 - description (9)  
V6m N. Side o/c

F65-10 - description (10) east  
side  
15A - west side

F65-11 - description 11  
breccia - 2 specs.

F65-12 - location 12 - south  
side of outcrop area 41.

F65-13 Argillite claim 730

F14 - fold zone dikes claim  
729

F15 basalt m.g. - large  
o/c S. of highway west of  
Creek Crossing - Central  
Patricia No. 2.

~~F65-16 - Big Dam Ven~~

~~F65-17 - In the Sluiceway~~

~~F65-18 - claim 745 - molybdenum  
o/c~~

- F65 - 16 - Trench N. of pumphouse lake  
- 400' west of dam
- F65 - 17 - Vr. g. outcrop N.Side of I.F. and 650 ft.  
west of the dam on pumphouse lake
- F65 - 18 - Vr. - Sericitic, N.W. Corner of pumphouse lake.
- F65-19 - Line 118, near S.W. Corner - Claim 751
- F65 - 20 - Line 118, near S.W. Corner Claim 751- quartz
- F65-21a - Line 102 - 150' S.E. of #1 Base Line,  
Shown as pillow lava - Vr F.
- #21b - is more silic with hb.
- F65 - 22 Big Dome Vein
- F65 - 23 Lake Shore Vein.

**DUPLICATE COPY  
POOR QUALITY ORIGINAL  
TO FOLLOW**

F65-16 - I.F. in trench N. of Pump house  
lake - 400' west of dam

F65-17 - Vr. of outcrop  
N. Side of I.F. and 650'  
- west of the dam on Pump house  
lake

F65-18 - Vr. - sericite, n.w  
- corner of Pump house lake

F65-19 - Zone 115, near  
S.W. corner Claim 751  
- hb

F65-20 - Zone 115 near  
S.W. corner Claim 751 gtz

F65-21a - Zone 102 -  
100' SE of #1, Base Zone,  
shown as pillow lava  
= Vr. of #21b is more  
silic with hb.  
silic with

F65-22 Big zone vein

F65-23 Lake - zone vein

- F65 - 24 Med. grained Basalt  
S.E. side Road Claim 748
- F65 - 25 <sup>?</sup>  
Vr base - S.E. Side Road  
Claim 748
- F65 - 26 Dioritic Rock, Claim 70, Line 8  
1000 ft. N.E. #3 Shaft
- F65-27 Pickle Crow Porphy, line 8, 1,000 N.E.  
#3 Shaft
- F65-28 I.F. at Sawmill vein
- F65-29 Dioritic rocks, 1,000 ft.  
N.W. Albany shaft
- F65-30 Albany porphy. N. Side road  
- 600 ft. S.W. Albany shaft
- F65-31 Claim 737 Vd.  
Northwest of magnetic zone
- F65-33 I.F. O/C N.W. of highway, near south boundary of  
Claim 627
- F65-34 Dike on power line 250' S.W. of the end of the  
south tie line.

**DUPLICATE COPY  
POOR QUALITY ORIGINAL  
TO FOLLOW**



F65-24 med grained Basalt  
SE side Road Claims 745

F65-25 - V. br - SE side road?  
Claim 748

F65-26 - Dioritic Rock  
Claim 70, line 8

1000' NE # 3 shaft

F65-27 - Pickle Crow porphy  
line 8, 1000 N.E  
# 3 shaft

F65-28 I.F. at Sawmill vein

F65-29 - Dioritic rocks, 1000'  
N.W. Albany shaft

F65-30 - Albany porphyry of side  
road - 600' SW Albany shaft

F65-31 - Claim 737 Yd.  
north west of magnetic zone

F65-33 I.E. o/c N.W. of highway  
near south boundary of  
shiny patch  
Claim 627

F65-34 - Dike on power line  
250' SW of the end  
the south fire line

- F65 - 35 - lamp dike. Claim 760
- F65 - 36 - D.D. Core from shack near Crow River on trail north of Claim.
- F65 - 37 - large stripped O/C on west boundary of 2072, vd. fine chert
- F65 - 38 - Outcrop, Vd. at Crow River Claim N.E. Corner 2075
- F65 - 39 - O/C vd. N.W. Corner 2074, Vd. hb.
- F65 - 40 - Yd.q. Outcrop adjacent to carbonate I.F. Trench 774, near N.E. Corner
- F65 - 41 - Carbonate I.F. - trench 774 - near N.E. Corner of Claim
- F65 - 42 - Marker horizon in Pickle Crow porphyry 750' level
- F65 - 43 - Pickle Crow porphyry - 700 level - No.3 shaft
- F65 - 44 - Garnet - down on level ten - 700 level, No.3 shaft

(6 pieces)

**DUPLICATE COPY  
POOR QUALITY ORIGINAL  
TO FOLLOW**

F65-27 - Lamp dike. Claim 260

265-26 - D.D. Coefm shaft  
near Crow River on East of  
Claim

F65-37 - large stipped o/c on  
west boundary of 2072, Vd  
fine chert

F65-38 - outcrop at Crow River  
claim N.E. Corner 2075

F65-39 - o/c rd N.W. corner 2074  
Vd. hb

F65-40 - Yd. g. outcrop adjacent  
to Carbonate I.F. trench 774  
near N.E. corner

F65-41 - Carbonate I.F. trench  
774 - near N.E. corner of claim

F65-42 - Marker horizon in  
Pickle Creek porphyry 750' level

F65-43 - Pickle Creek  
porphyry -  
700 level. 1103 Shaft

F65-44 - Garnet - down on level 6'  
1700 level, 1103 Shaft  
(6 pieces)

(51)

- F65 45 - I.F. dump at Albany Shaft
- F65 - 46 - Vd. f - o/c on line, 12 N.E. adjacent to creek and  
S.E. of Albany shaft
- F65 47 - Lapilli tuff? between lines 8 & 18 S.W. and  
400' S.E. of contact of Pickle Crow porphy.
- F65-48 - Diorite - Line 4 S.W., 300' S.E. of contact of  
Pickle Crow porphyry
- F65-49 - S.E. Corner of map area  
Outcrops to S. of Claim 2065
- F65-50 - S.E. of Albany Shaft - Claim 66
- F65-51 - Sunday morning traverse to the west of Claim 626  
Dioritic phase of Vd. adjacent to I.F.

**DUPLICATE COPY  
POOR QUALITY ORIGINAL  
TO FOLLOW**

F65-45 - I.F. dump of  
Albany Sluff

F65-46. Vd. of - @/c on line  
12 N.E. adj to creek &  
SE of Albany Sluff

F65-47 Sapilli tuff, between  
lines 8 & 10 SW of  
400' SE of contact of  
Rickle Creek po phy

F65-48 - "Diorite" - line 4 SW  
300' SE of contact of  
Rickle Creek po phy

F65-49 - SE corner of map  
area of c. to S of Claim 2065

F65-50. SE of Albany Sluff  
Claim 66

F65-51 - Sunday morning <sup>transverse</sup> <sup>26.</sup>  
to the west of Claim 626 -  
chaotic phase of Vd. adjacent to I.F.

July 24, 1965

Pickle Crow Mine

- ( ) outcrop on Road going S.W. of road between #1 & #2 Shaft  
N.W. Side of O/C. Pillow lava and selvages of g. greenish.  
Few good pillows. Generally faces N.W. on two circular  
pillows.  
S.E. side slightly coarser grained.
- (1a) Road 50' N.E. Fin? K12. Road to mine at 335<sup>o</sup>M. O/C near  
Fin? are F.G. type with selvages. Pillows very poor.
- (2) Claim 725, S. Side of creek at outlet to pond.  
Light greenish rock with some small light coloured fragments and  
some fine light cream coloured feldspar.
- (3) #2 post 728, Xr? light grey green f.g.  
Spec. 1 - 150' S. on trail from outlet of pond  
Spec. 2 -

July 25, 1965 - Friday

O/C near pond and sawmill Pickle Crow

O/C N.E. corner of pond is pillow lava, not chert.

**DUPLICATE COPY  
POOR QUALITY ORIGINAL  
TO FOLLOW**

July 24, 1965  
Pickle Creek Mine

① outcrop on bank of stream  
filled with small pebbles  
V. E. with slightly coarser grains

② Road 50 NE line K12. Road to north  
at 335M. o/c near tin ore  
f. g. type with aduaga. pillow  
J. near pool

③ clam 725, S side of road  
add to pond  
light greyish rock with some  
small light colored fragments  
and some fine light color  
colored fragments

④ at post 725, K12? light grey quartz  
Spec 1 - 150 S on trail from  
bank of pond

Spec 2

July 25, 1965 - Friday  
o/c near pond & Seaville Pickle Creek  
o/c at NE corner pond is pillow like  
not chert

- (4) Chert band can be traced for 150' - is about 6' wide.  
and consists of slightly rusty sugary chert and a few  
minor bands 1/4" to 1/2" of black f.g. chert.  
Str. 45°(?) dip. Vert.

Follow line 80 S.E. of pond 150-250 longer from outcrop  
of basalt with poor pillows.

From #1 post 76 to S. claim line, etc? 1000 O/C Vr. intermed  
composition, some lenticules of mafics(?) no phenos  
75' farther south generally similar rock type.

- (5) At ? of trench, reddish chert on S. side of outcrop highly  
feldspathic to 200' S. of ? v.f.g. medium grey finely banded  
tuff Strike - 6°N.

**DUPLICATE COPY  
POOR QUALITY ORIGINAL  
TO FOLLOW**



④ Chert band can be traced from 150  
is about 6' wide and consists of  
slightly rusty sugary chert with a few  
minor bands  $\frac{1}{4}$ " to  $\frac{1}{2}$ " of black f.g.  
chert. Site 45(?) dip vert.

Follow line 76 from outcrop  
o/c shown above and  
follow line 80 SE of pond  
150-250' longer from outcrop of  
basalt with poor pillows

Frame #1 post 76 to S

claim line etc? 1000' o/c vs  
interbedded composition, some  
lenticles of mafics, no phenos  
75' further south generally similar  
rock type

⑤ at end of trench reddish  
chert on S side of o/c highly feldspathic  
to 200' S of o/c vfg med  
grey finely banded tuff Site 160

Dip E. 80°

- (6) line 92 near boundary of claim 2011 - same fragments of breccia on N. side of outcrop 1/2" diameter. light ? and feldspathic. Other parts of the outcrop are a medium grey colour and in places contain ? feldspar spec.
- (7) I.G. behind store and opposite hotel. width 50' - finely banded cherty. ironformation bands 1/2" to 2" dip out.
- (8) Outcrops on western boundary of Claims 762 and 763. N. side vb. pl. and S.W. Corner Vb M.
- (9) Outcrops on S. edge of pond and marsh, more northerly O/C vbm, and piled on S. side.
- (10) Line 92 - Claim 762  
Long outcrop on W. side of south of chert outcrop is light-coloured with some feldspars - on the last side abundant feldspar 1/8"

**DUPLICATE COPY  
POOR QUALITY ORIGINAL  
TO FOLLOW**

⑥ boundary  
claim same  
fragments of pieces on N  
side outcrop in dissection  
part of boundary and a middle  
bedding of ...  
spite

⑦ I.F. Behind Stone and opposite side  
width 50' finely banded cherty  
iron formation bands 1/2" to 2" dip NW

I.F. up to 100 feet in width  
banded, some fine bands extending  
about 2"

⑧ outcrops on ... boundary  
claims 262 at 763  
N side 1/6 ft. SW corner 1/6 W

Outcrops on S. edge of pond and  
marsh more notably o/c 1/6 W  
and pit on S. side

⑨ June 92 - claim 762  
outcrops on W side of south of  
that outcrop is light colored  
with some talc spots - on the last  
is similar to talc spots 1/8

- (11) Outcrop of docite on the west side of creek on line 108. Claim 763  
Generally light coloured and contains breccia fragments 1" to  
1½", very light coloured.
- (12) Outcrops on the western boundary of claim 763.  
N. Side contains a few scattered breccia fragments.  
The southern outcrop is uniform.
- (13) Gwk? outcrop N. side of ridge from Pickle Crow Hotel - 15' wide.  
exp. - argillite bed, thin up to ?
- (14) Feld porphyry dike about 15' wide exposed.  
feld phenos light colour, about 1/8" diameter - Spec.  
All O/C's I.F. poorly exposed, with silic I.F.

Boundary between pillowed and coarse grained parts of flows  
on the shaft are difficult

**DUPLICATE COPY  
POOR QUALITY ORIGINAL  
TO FOLLOW**

(11) outcrops <sup>locally</sup> on the west side  
of creek on line 105, claim 763  
generally light colored and  
contains breccia fragments  
1" - 1 1/2" very light colored

(12) outcrops on the western  
boundary of claim 763  
N. side contains ~~some~~ a  
few scattered breccia fragments  
The southern outcrop is uniform

(13) Gink? outcrops N. side of ridge  
from Public Cross Hotel - 15' width  
exp. - argillite bed thin up to 3"

(14) - Feld porphyry dike about 15' width  
exposed. - feld phenocr light colored  
about 1/8" diameter. - spec

All o/c's I.F. poorly exposed with  
silver I.F.

Boundary between pillowed and  
coarse grained part of flows on  
the ~~west~~ side are difficult  
to see

14 cont'd

to separate but both types are present.

No I.F. seen - N. E. of shaft ?

Some flow top breccia of light coloured angular fragments up to 1" diameter on the outcrop wall of the manager's house.

P.M. - Visited O/C's N. of #3 shaft on N. side of tailings  
- all V 6m as shown.

Then went to Central Patricia No. 2 operation.

Could not locate I.F. shown by J.E. Thomson on claim line  
S. of creek. Other small pieces of I.F. located.

These are rusty qtz - ??  
about 6' width.

Possible fault in vicinity as lu....? well developed.  
Plunge 35° to N.E.

Went S.E. on grid line to edge of mapped area.

**DUPLICATE COPY  
POOR QUALITY ORIGINAL  
TO FOLLOW**

Some floor top taccia of light  
colored angular fragments up to  
diameter on the outcrop wall of  
the manger house.

PM - visited of S. N. J #3 shaft on N  
side of outcrop - all 1' from top  
shaft  
went to Central Palace No 2  
Could not locate shaft  
J.E. Thomas on plain line of shaft  
observed pieces of T.F. located  
these are probably shaft - 2nd level  
but to north  
found shaft in vicinity of line  
well developed plunger 35 to 45  
went to E. N. J and line  
area

Wednesday, June 31, 1965

N. Side of lake and creek where water pumped to the mine.

(15) Outcrops on N. Side of pond are f.g. siliceous rocks.

I F about  $\frac{1}{2}$ " inch for 100 east of dam.

Rocks are f.g. fairly ?.

are dark grey in the exposed surfaces but are light buff colour on the freshly exposed weathered surface.

Claim 730 1 F. along S. side of hill 6' wide exposed. Contain lenses of quartz up to 1 inch wide.

O/C ridge 100' farther N.W. is a greenish rock with feldspars Should be in the tuff breccia unit.

O/C Claim 75? Central S.W. post shown as diorite should be Vr. hb. - Spec.

Specs (1) Vr fg. N. 1F Claim 730  
(2) Vr q. N. Side pond ???  
(3) Vr hb. S.W. side of the claim 751

**DUPLICATE COPY  
POOR QUALITY ORIGINAL  
TO FOLLOW**



Wednesday, June 31, 1965

N Side of [unclear] creek where  
water pumped to the mine

outcrops on N. side of pond are  
f.g. siliceous rocks.

1 F. about [unclear] from  
east of dam. Rocks are f.g. [unclear]  
are dark grey [unclear] surfaces  
but are light [unclear] color  
on the [unclear] weathered surfaces.

Claim 720. N. 1 F. along S. side  
hill. 6' wide [unclear] layer  
of quartz [unclear] 1' in width

o/c ridge 100' farther N. is  
a greenish rock with [unclear]  
should be in the [unclear] unit

o/c claim 751. [unclear] SW part  
down as [unclear] should be  
v. hb. spec.

spec 0. 71 fg. N. 1 F. claim 720  
719 - N. side of [unclear]  
v. hb. SW side of the  
claim 751

Some stringers of white quartz cut across the vein at about  $45^{\circ}$   
and cut across the earlier bluish quartz with bands of ??

Wed. July 13, 1965

Traverse N. of Powder House Lake

For traverse N.W. across large O/C pillows observed as shown

Base line E. of O/C    ?    to    ?

Picket 30 N.W. on line 112  
continue N.E. for 450' to O/C.

0-50' N. pillows Str.  $75^{\circ}$

50 - 100    Vbm fg

100-250    High

250-600    -V<sub>1</sub>

600 -        Small O/C

**DUPLICATE COPY  
POOR QUALITY ORIGINAL  
TO FOLLOW**

some take stringer pocket party  
cut across the line about 450'  
cut across the earlier block party  
width 1/2 block of cloud

Wed July 13, 1965

Travel from Garden House Lake  
to base of Pond House Lake  
Travel N.W. across line  
to base of W access large o/c  
observed as shown

Take line E of o/c to to?  
base

pocket 30 N.W. on line 112  
continue  
continue NE for 450' to o/c

0-50' N pillow str 75°  
50-100 vbmfg  
100-250 High  
250-400 off  
400- Small o/c

Thursday, July 1, 1965

Big Dome Vein

100' at west end sh. zone strikes at  $60^{\circ}$  in carbonatized rock.  
Uniform part of vein 1' - 4' width contorted strikes N.E.

50' - a parallel vein - 4' - 15' strike - also N.E.

Wall rocks are light grey contorted arkose.

Parts of the vein consist mainly of quartz with pockets of C?

10" x 3" cut by lake transverse stringers about 1/2" width

About 50' from the N.E. ? a 15' zone 1' wide consists of carbonate  
transverse and bisecting stock works of quartz stringers.

Lake shore Vein

1' - 3" width quartz and carbonate banded with inclusions of ??  
? stringers extending into the walls.

Rusty alterations due to weathering carbonate. Some quartz white  
color, parts cluster.

**DUPLICATE COPY  
POOR QUALITY ORIGINAL  
TO FOLLOW**

Shore July 1, 1965

By Dome Vein

100' west end sh zone strikes at

60° in carbonatized rock.

Uniform part of vein 1' - 2' width

contorted strikes N.E.

50' - a parallel vein 1' - 1.5' strike  
also NE

well rocks are light grey contorted

rocks of the vein consist primarily of  
quartz with pockets of calcite

10" x 3" cut by like fracture  
stringers about 1/8" width

About 50' from the NE of a 15'  
zone, 1' wide consists of carbonate

lensing stock work of quartz str.

Like Shore Vein

1' - 3" width of carbonatized  
banded with inclusions of calcite  
stringers extending into all walls  
Rusty alterations due to weathering  
carbonate. Some of white color  
parts cluster

750 Line

Cgl---

Basal contact poorly marked but scattered pebbles in cgl.

Many pebbles tabular - dark grey chert 5" max - generally 3" by 1"

- pebbles form 10% st.

- bedding poor except by elongation of fragments.

30" from base pebbles I.F. fairly well rounded.

**DUPLICATE COPY  
POOR QUALITY ORIGINAL  
TO FOLLOW**

700' level

Cgl -

Base contact poorly marked

but scattered pebbles in cgl.

Many pebbles tabular - look like  
shale 5" max - generally 3"

by 1" - pebbles form 10% of  
matrix poor except by elongation  
of fragments

36' from base pebbles 1.F.  
fairly well rounded  
fairly well rounded

New Road N. Central Patricia - Junct. with G46

27,064 .1 Miles

27,077 .7 miles O/C both sides of road pillow lava strike  $75^{\circ}$

Dip S.E.  $75^{\circ}$  - O/C extends along road for 100 feet.

27,078.7 Lake West side estimated to be a half mile in length

27,080.0 - o/c both sides for 200' pillowed basalt str.  $40^{\circ}$ ,  
dip vert.

27,081.7 - o/c grey hornblende granite on left side  
Road going due east.

27,081.7 - 082.5 swamp

082.7 - Road bends to N.W.

082.7 - for 200' o/c both sides granite with an inclusion of  
greenstone, generally fg. but contains feldspars 1/8"  
in places.

Str.  $75^{\circ}$  dep.vert. General strike  $45^{\circ}$

Road  $45^{\circ}$ .

**DUPLICATE COPY  
POOR QUALITY ORIGINAL  
TO FOLLOW**



J  
NW  
New Road N. Central Patricia  
Central Patricia  
Carroll Patricia

Just with 646

27,064.1 Miles

27,077 .7 miles o/c both sides of

road follow lava strike 75°  
dip SE 75° - o/c extends along  
road for 100 feet

27,078.7 - the west side, estimated  
to be a half mile in length  
to be a half mile in length

27,080.0 - o/c both sides for 200'

27,081.7 - followed (small) for 40° dip vert.  
on left side - grey hornblende granite  
Road going due east

27,081.7 - 082.5 swamps swamp

→ 082.7 - Road trends to NW.  
Road trends to NW

082.7 for 200' o/c both  
sides granite with an  
inclusion of greenstone, generally  
fg but contains feldspars 1/8" in places  
St 75° dip vert. Road strike 75°  
road 75° several strikes

- 27,082.8 - Bridge river flows W.
- 085.0 - Small lake to right
- 087.0 - larger, long lake right side
- 089 - large lake  $1\frac{1}{2}$  to 2 miles length
- 089 - Road at  $45^{\circ}$
- 095.3 - Sign - J.N. Pitts Contractor

Port Arthur

- 096.0 - Trees cut trail  
Road not finished?
- 096.2 - ? pillow ?  
working about 1500 feet along?  
Road at  $90^{\circ}$ .

**DUPLICATE COPY  
POOR QUALITY ORIGINAL  
TO FOLLOW**

082.0 - [unclear] [unclear] [unclear]  
083.0 - small [unclear] [unclear]

087.0 - large - long  
lake right side

089 - large lake 1/2 to  
2 miles long

089 - road at 50

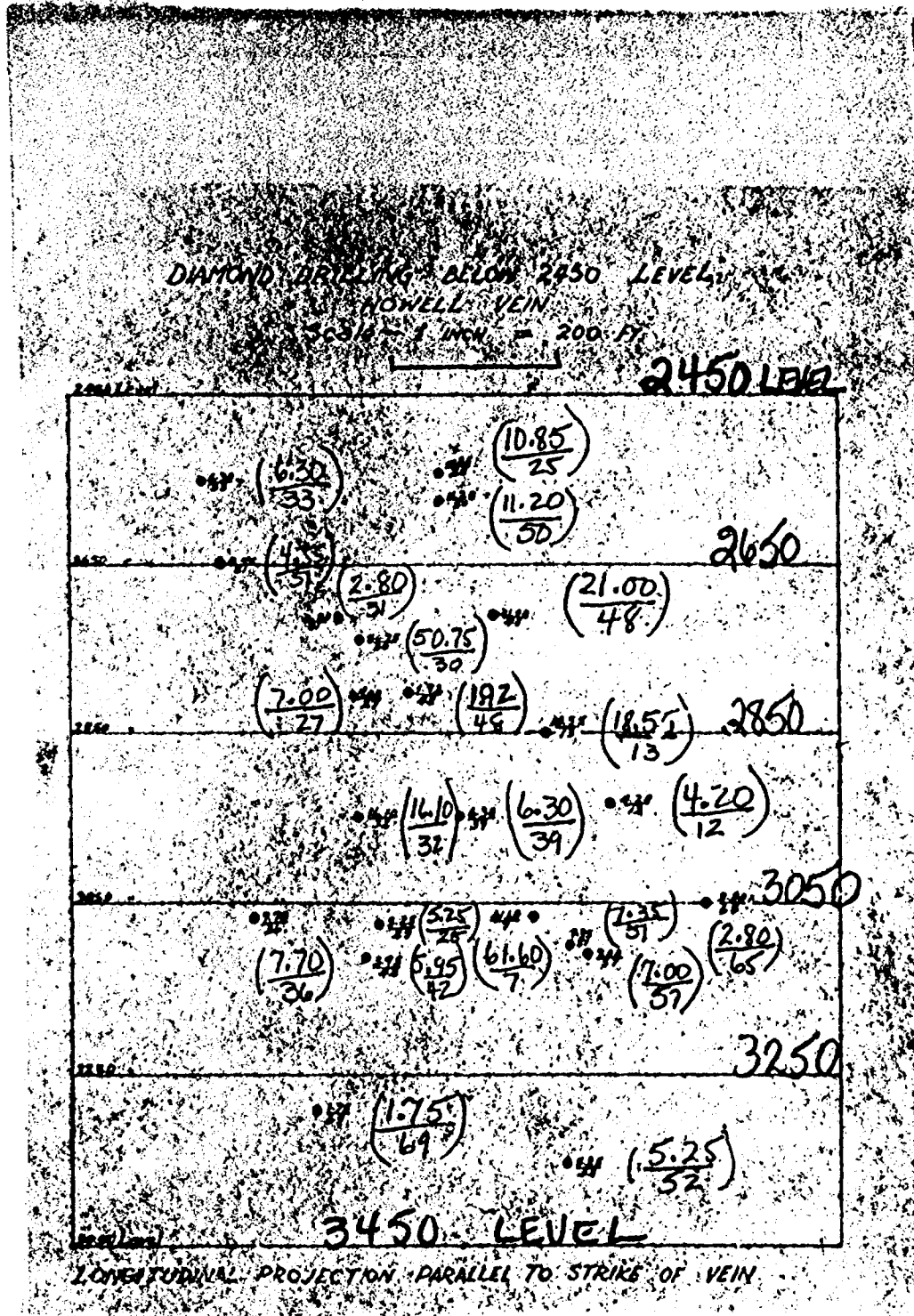
090.0 - Sign  
J.W. Pitts <sup>Contractor</sup>  
Port Arthur  
101 - Arthur

096.0 - trees end of road  
road not finished?

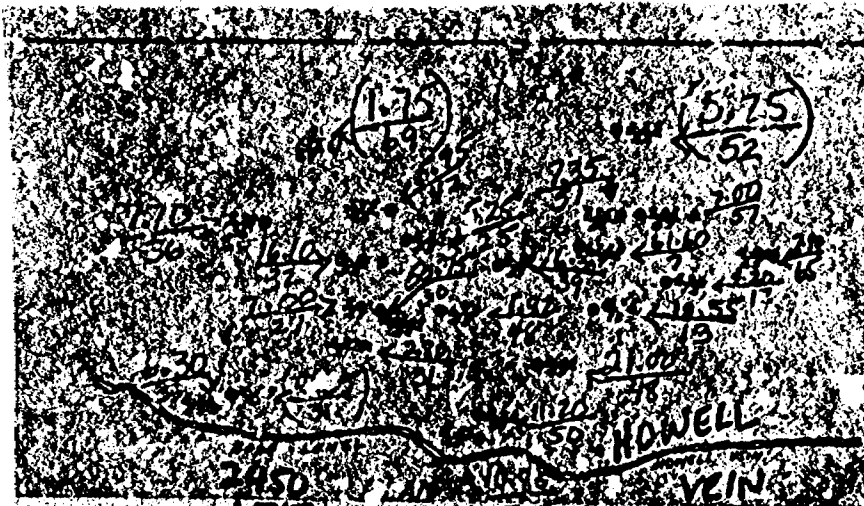
096.2 - [unclear] [unclear] [unclear]  
working apart  
working about 1500 feet along  
road at 90.

7.2.11

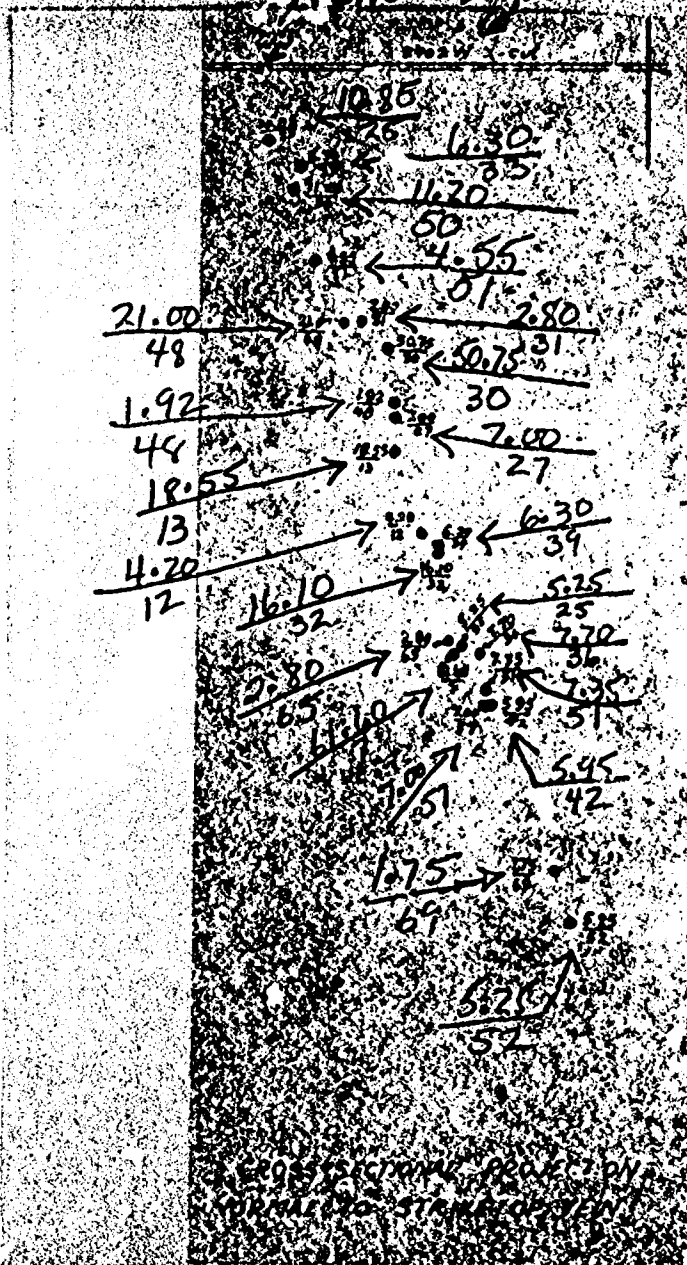
# DIAMOND DRILLING BELOW 2450 LEVEL HOWELL VEIN



SCALE 1" = 200 FT



HOWELL VEIN 2402 N.X-CUT



CROSS SECTIONAL  
PROJECTION  
NORMAL TO  
STRIKE OF  
VEIN

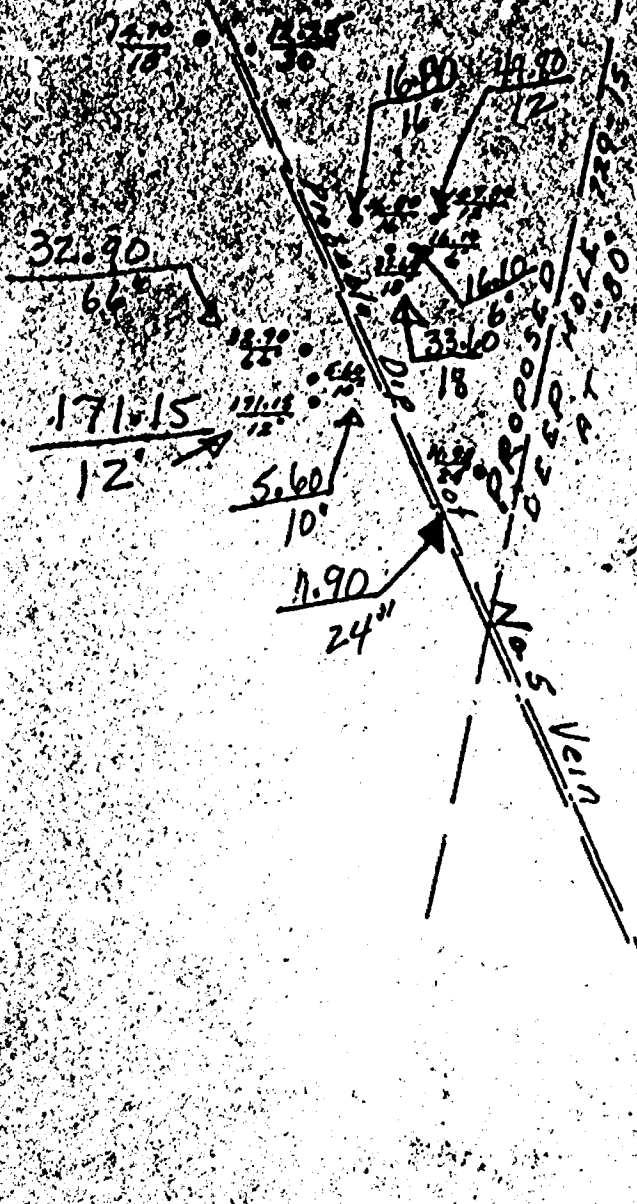
SCALE  
1" = 200 FT  
\_\_\_\_\_

SURFACE

1350 LEVEL

150' W. DRIFT




VERTICAL SECTION



# CLAIM 706.

## ASSAY PLAN OF BIG DOME VEIN

Scale - lin. = 20ft.

- A  Quartz
- B  Greenstone
- C  Iron Formation

H	W	W
0.40 x 9"	3.60	360-0.9" - 0.40
0.20 x 18"	3.60	369-1.6" - 0.20
0.40 x 12"	4.80	370-1.0" - 0.40
<u>1.00</u>	<u>12.00</u>	

$$\frac{12}{39} = 3.08$$

0.40	365-3'9" - 0.40
0.20 x 42"	366-3'2" - 0.20
0.20 x 60"	367-4'2" - 0.40(?)
<u>102"</u>	

Quartz  
RUSTY  
CARBONATE  
VEIN

371-3'5" 0.20  
372-5'0" 0.20

363-4'8" - 0.40  
364-2'5" - 0.40

QUARTZ

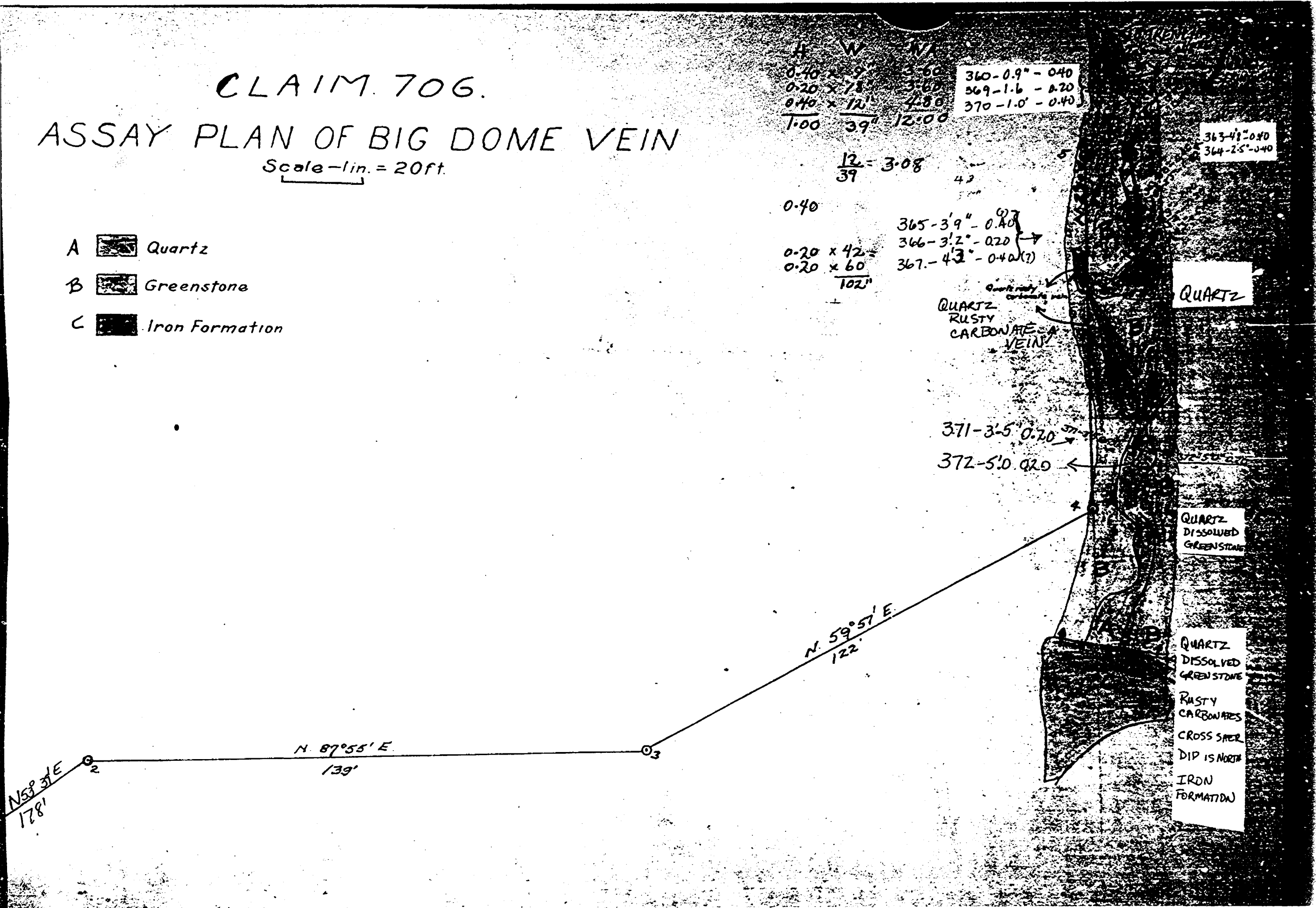
QUARTZ  
DISSOLVED  
GREENSTONE

QUARTZ  
DISSOLVED  
GREENSTONE  
RUSTY  
CARBONATES  
CROSS SHAFT  
DIP IS NORTH  
IRON  
FORMATION

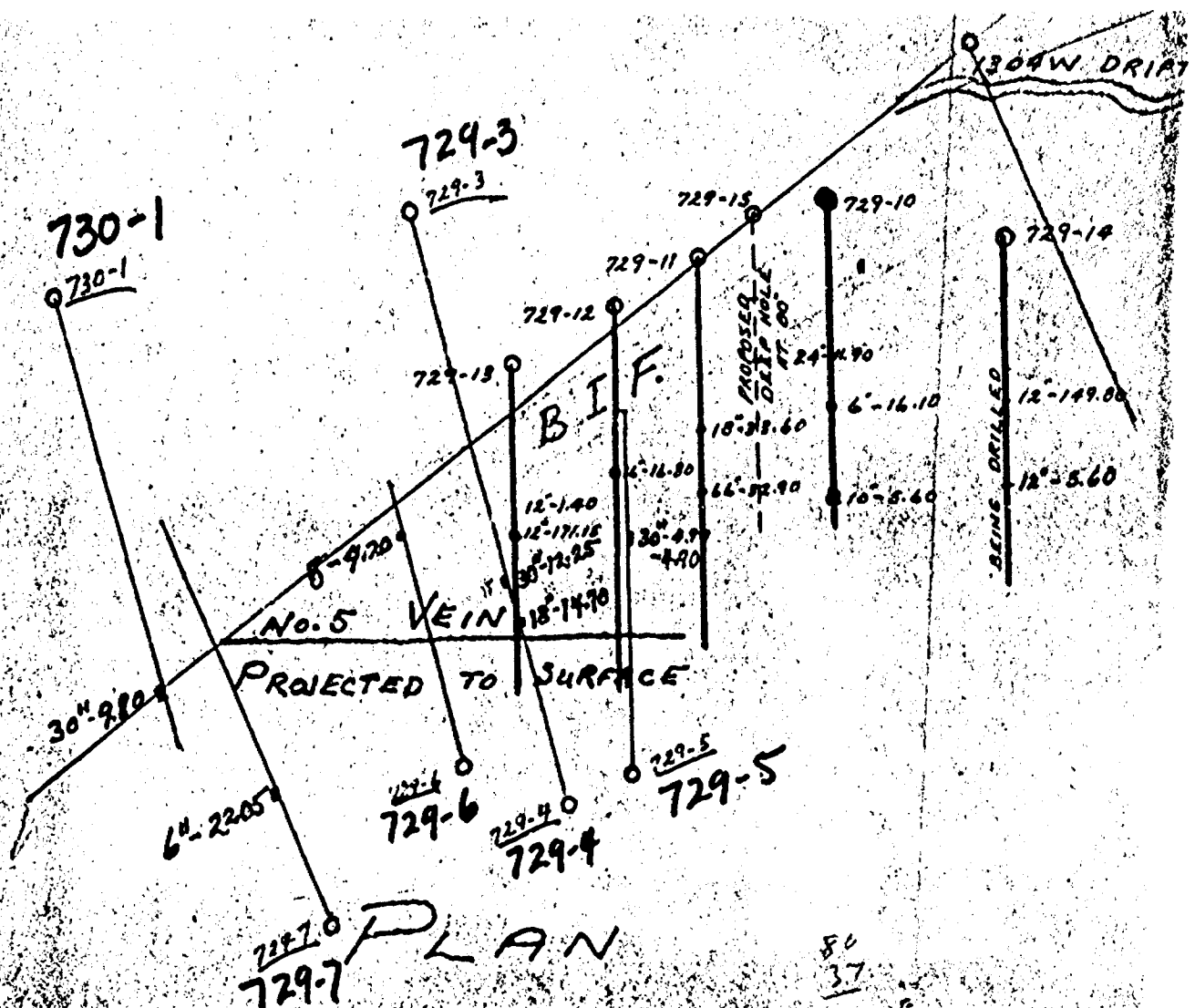
N. 59°57' E.  
122'

N. 87°55' E.  
139'

N59°31' E  
178'



Riopelle Vein



In black: Present Drilling  
 In red: Original Drilling

50  
 37  
 14 43

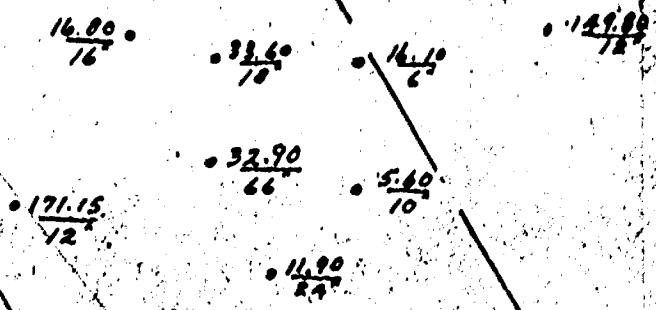
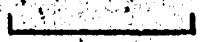


SURFACE

PICKLE CROWN GOLD  
MINES LTD

SURFACE DRILLING

SCALE 1" = 200'



⊗ Intersection  
aimed for in 729-75

1350 LEVEL

Stope  
1304W. DRIFT

LONGITUDINAL PROJECTION

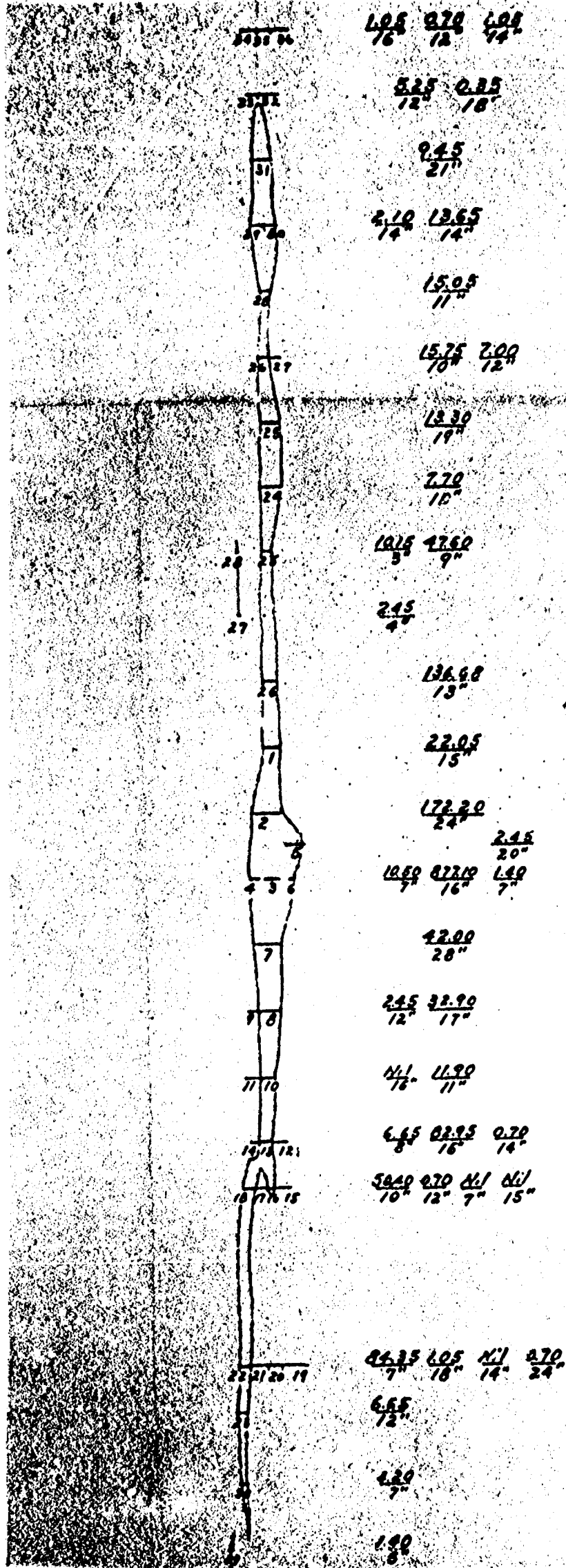
SCALE

JULY 1951

1" = 10'

# PICKLE CROW GOLD MINES. ASSAY PLAN.

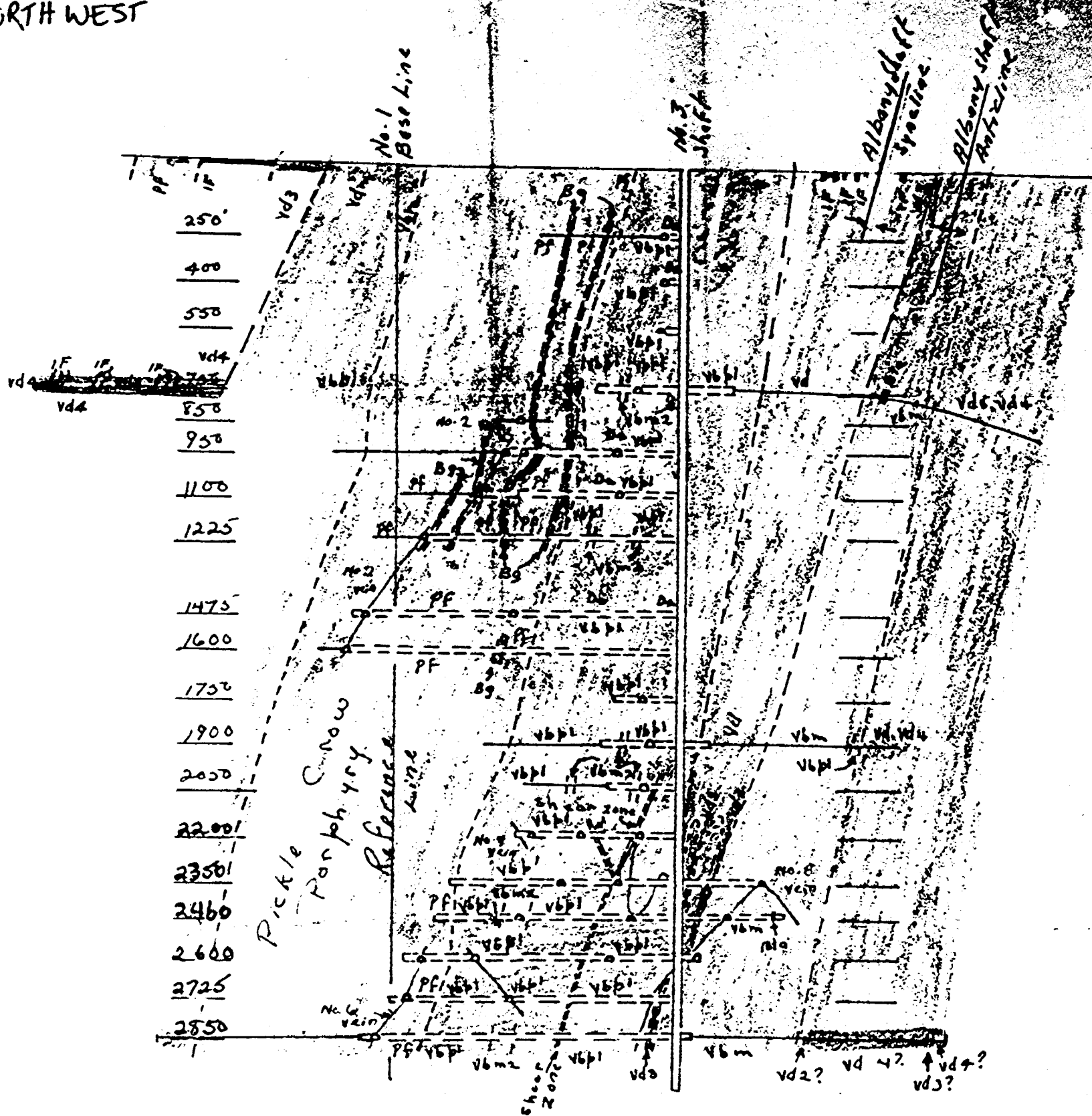
## SURFACE VEIN CLAIM 729



SECTION NO. 1 (1,800' SOUTH WE

NORTH WEST

SOUTH WEST



NORTHWEST

SOUTHWEST

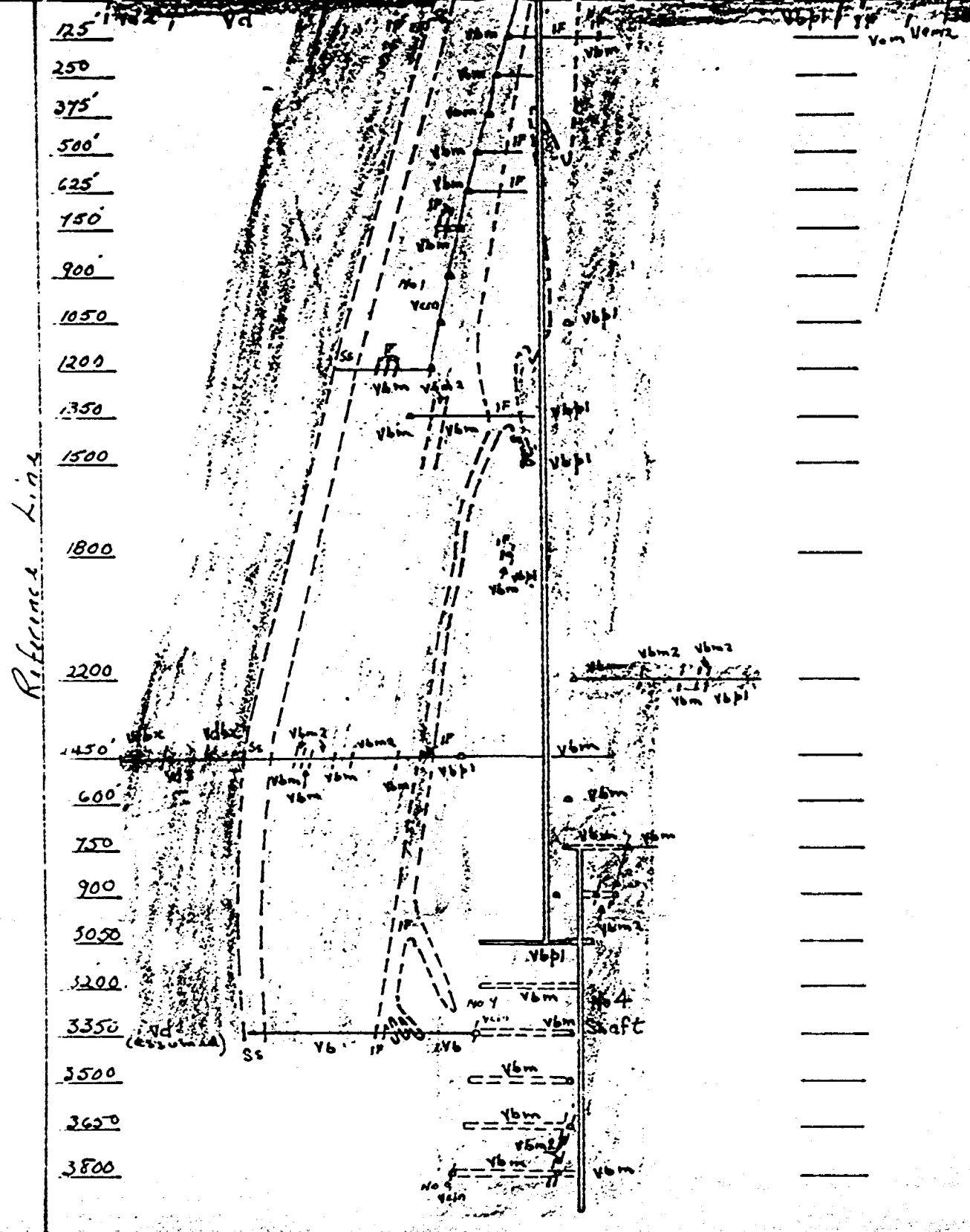
No. 1 Base Line

Albany Syncline

Little River Anticlinorium

No. 1 Shaft

No. 3

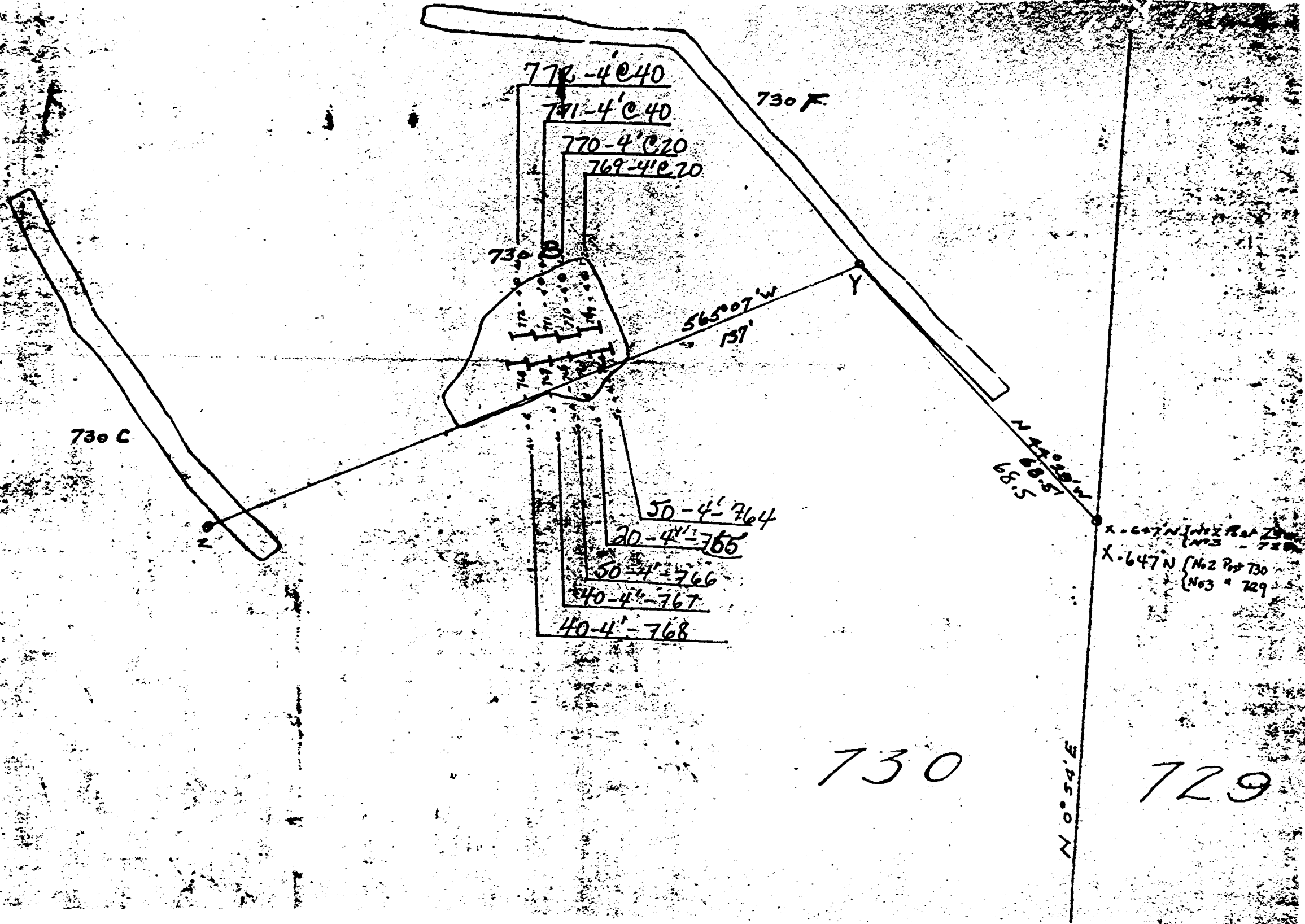


SECTION #2.  
(6,800 SOUTHWEST)

SCALE  
SCALE: 1" = 400 FT.

Section No 2 (6,800 Southwest)

CLAIM 730  
TRENCHES 730 F 730 B 730 C



SCALE  
 $1" = 20'$   
┌──────────┐

CLAIM 730

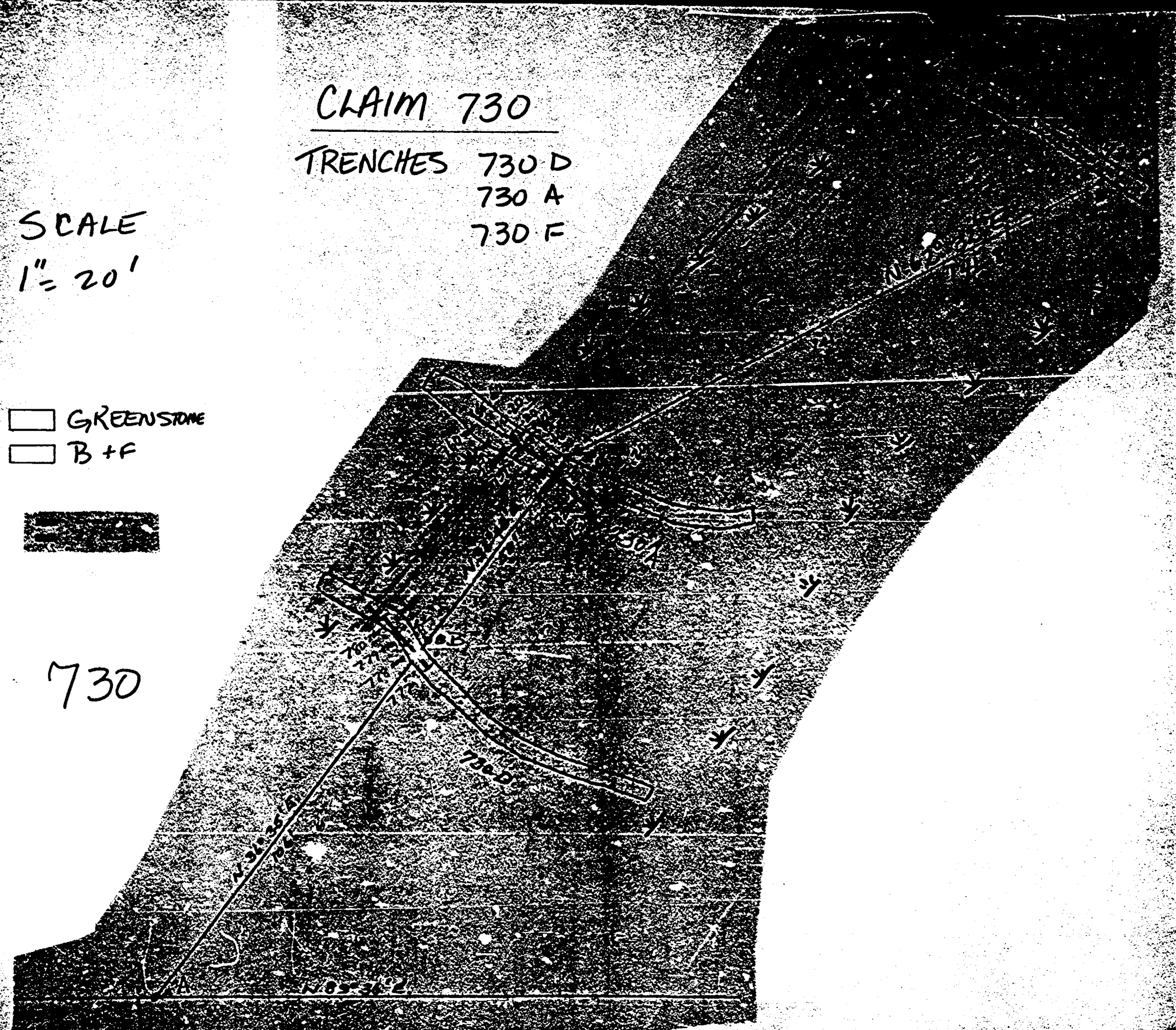
TRENCHES 730 D  
730 A  
730 F

SCALE  
1" = 20'

□ GREENSTONE  
□ B + F



730



# PICKLE CROW GOLD MINES LIMITED

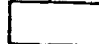


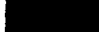
Eastern Part of Property

Gold Content of No.1 (Howell) Vein  
shown on Composite Level Plan

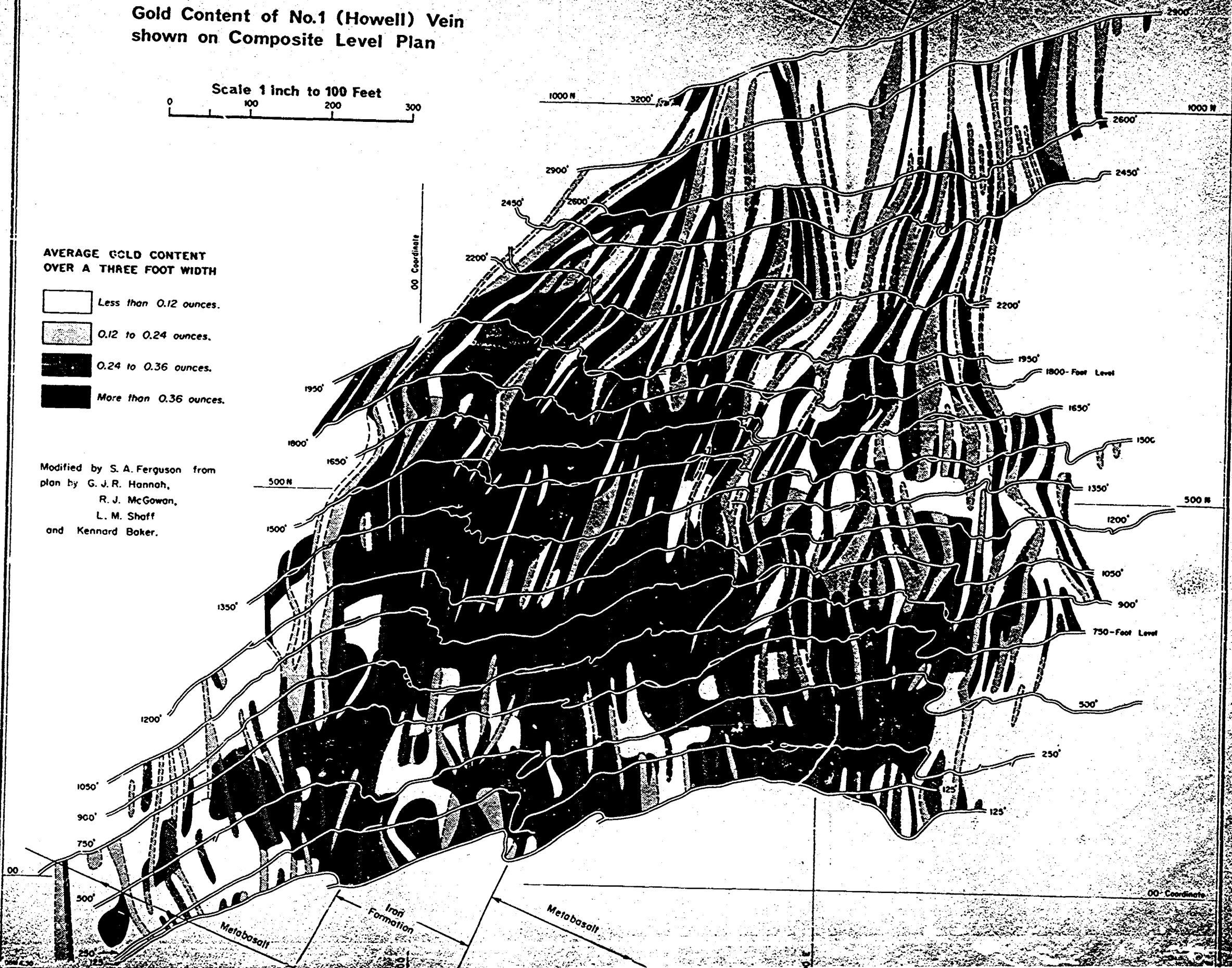
Scale 1 inch to 100 Feet

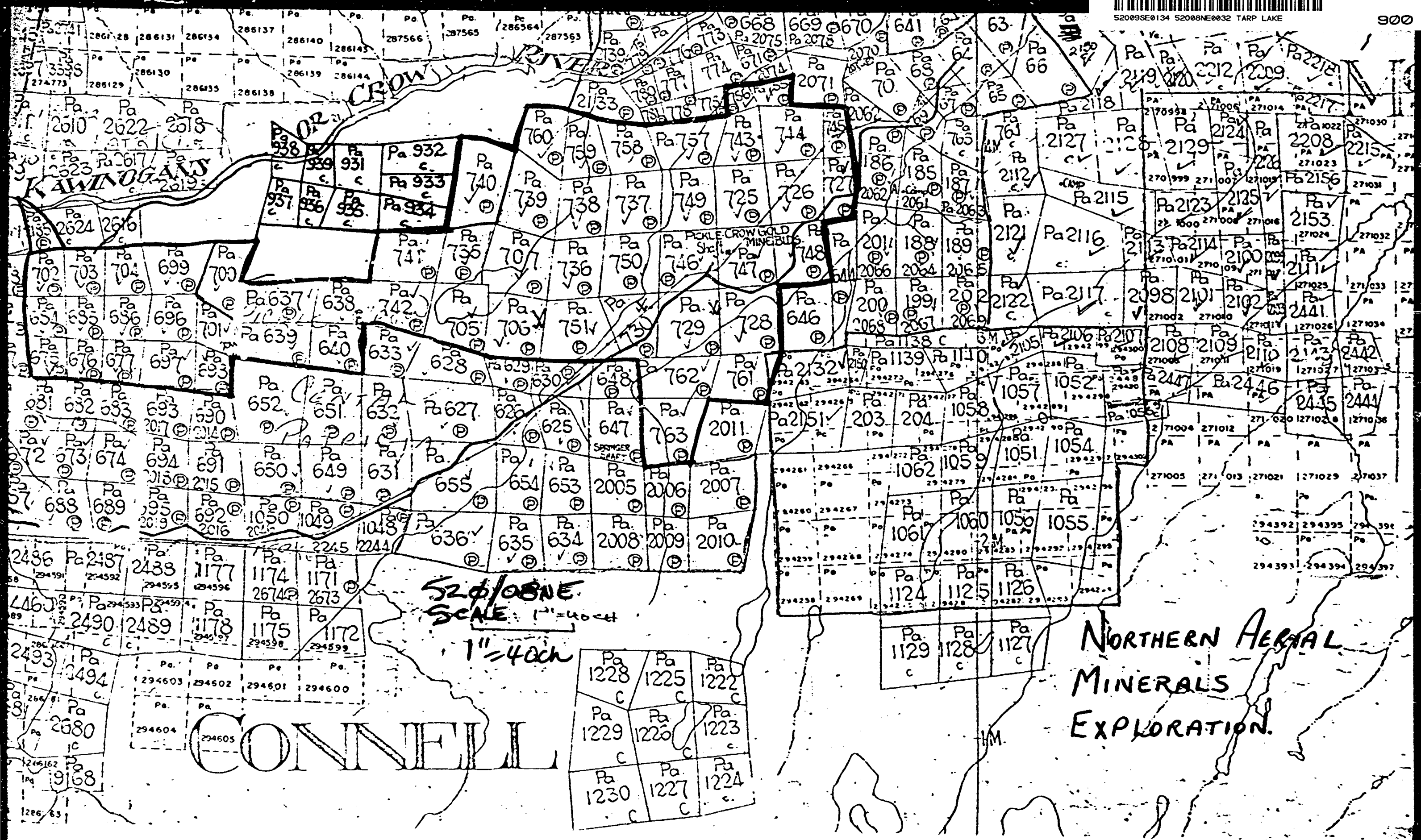


AVERAGE GOLD CONTENT  
OVER A THREE FOOT WIDTH

-  Less than 0.12 ounces.
-  0.12 to 0.24 ounces.
-  0.24 to 0.36 ounces.
-  More than 0.36 ounces.

Modified by S. A. Ferguson from  
plan by G. J. R. Hannah,  
R. J. McGowan,  
L. M. Shaff  
and Kennard Baker.





52008NE  
SCALE: 1" = 400 ft

NORTHERN AERIAL  
MINERALS  
EXPLORATION.

CONVEY

Pa 1228 c	Pa 1225 c	Pa 1222 c
Pa 1229 c	Pa 1226 c	Pa 1223 c
Pa 1230 c	Pa 1227 c	Pa 1224 c

Pa 1129 c	Pa 1128 c	Pa 1127 c
-----------------	-----------------	-----------------

Pa 1062 c	Pa 1060 c	Pa 1050 c	Pa 1055 c
Pa 1057 c	Pa 1052 c	Pa 1058 c	Pa 1051 c
Pa 1051 c	Pa 1054 c	Pa 1059 c	Pa 1053 c
Pa 1124 c	Pa 1125 c	Pa 1126 c	Pa 1127 c

KAWNOGAN

CROW

PICKLE CROW GOLD MINERALS

SPRUNGER SHAFT



FOR ADDITIONAL  
INFORMATION

SEE MAPS:

520/08NE

#

1

2

3

4

5

6

7

8

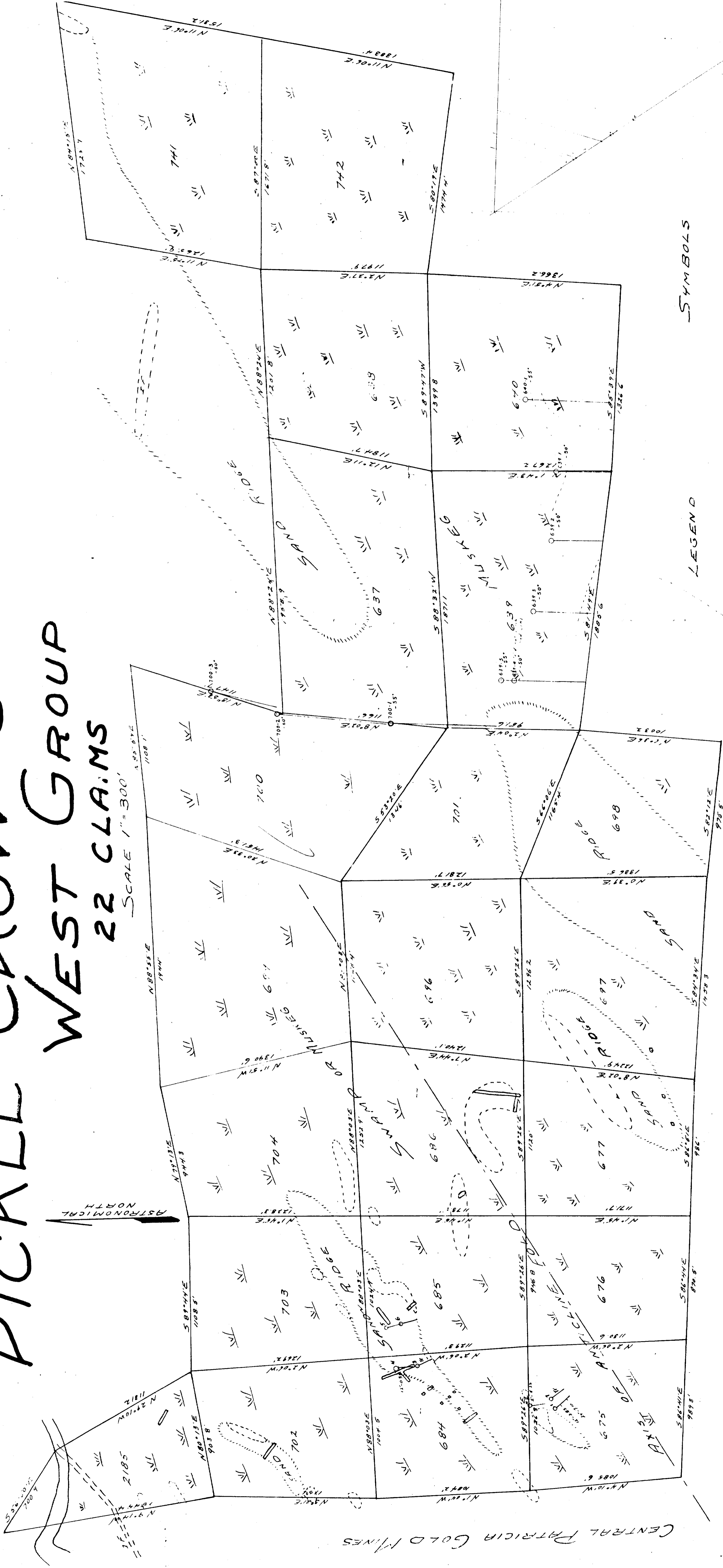
9

# PICKLE CROW GOLD MINES

## WEST CROW GROUP

22 CLAIMS

SCALE 1" = 300'



- SYMBOLS
- ANDSITE
  - IRON FORMATION
  - QUARTZ VEIN
  - TRENCHES
  - SAND RIDGE
  - DIAMOND DRILL HOLES
  - MUSKEG
  - OUTCROPS

★ 524/08NE-0032, #1



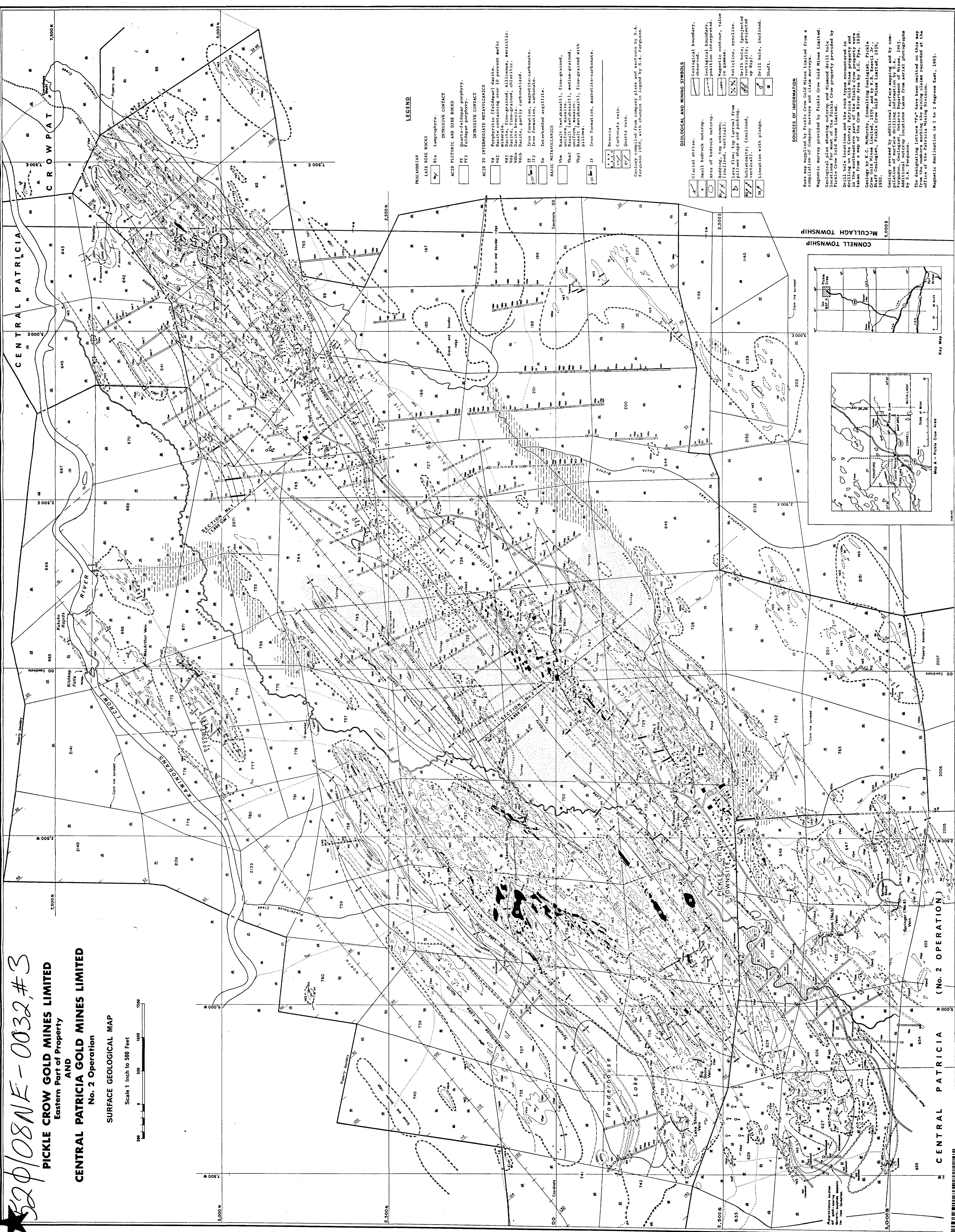
★ 52φ/08NE-0032, #2

SURFACE  
PLAN  
EAST  
SECTION

GEOLOGICAL PLAN  
OF THE  
EAST SECTION  
PICKLE CROW GOLD MINES LTD.  
SCALE 400=1

**PICKLE CROW GOLD MINES LIMITED**  
Eastern Part of Property  
**AND**  
**CENTRAL PATRICIA GOLD MINES LIMITED**  
No. 2 Operation  
**SURFACE GEOLOGICAL MAP**

Scale 1 inch to 500 Feet



**LEGEND**

- PRECAMBRIAN**
- LATE DIKE ROCKS**
- B1a Lamprophyre.
- INTRUSIVE CONTACT**
- ACID PLUTONIC AND DIKE ROCKS**
- PF Quartz-feldspar porphyry.
- PF2 Feldspar porphyry.
- INTRUSIVE CONTACT**
- ACID TO INTERMEDIATE METAVOLCANICS**
- Vd1 Porphyritic (feldspar) dacite.
- Vd2 Dacite containing over 10 percent mafic
- Vd3 Dacite, fine-grained, siliceous, aericitic.
- Vd4 Dacite, fine-grained, chloritic.
- Vd5 Dacite, partly carbonatized.
- IF Iron formation, magnetite-carbonate.
- IF2 Iron formation, carbonate.
- Ss Interbedded argillite.
- BASIC METAVOLCANICS**
- Vm Basalt (medium), fine-grained.
- Vm2 Basalt (medium), medium-grained.
- Vb1 Basalt (medium), fine-grained with pillows.
- IF Iron formation, magnetite-carbonate.
- Brecctia Breccia.
- Carbonate vein.
- Quartz vein.

**GEOLOGICAL AND MINING SYMBOLS**

- Geological boundary.
- Geological boundary.
- Position interpreted.
- Magnetic contour, value shown.
- Anticline, syncline.
- Drill hole, (projected up dip), projected.
- Drill hole, inclined.
- Shaft.
- Glacial striate.
- Small bedrock outcrop.
- Area of bedrock outcrop.
- Bedding, top unknown.
- (inclined, vertical).
- (inclined, vertical).
- (inclined, vertical).
- Lineation with plunge.

**SOURCES OF INFORMATION**

Map compiled by Pickle-Crow Gold Mines Limited from a compilation of Company surveys and claim surveys.

Magnetic survey provided by Pickle-Crow Gold Mines Limited. Locations for most of the Pickle-Crow property provided by Pickle-Crow Gold Mines Limited.

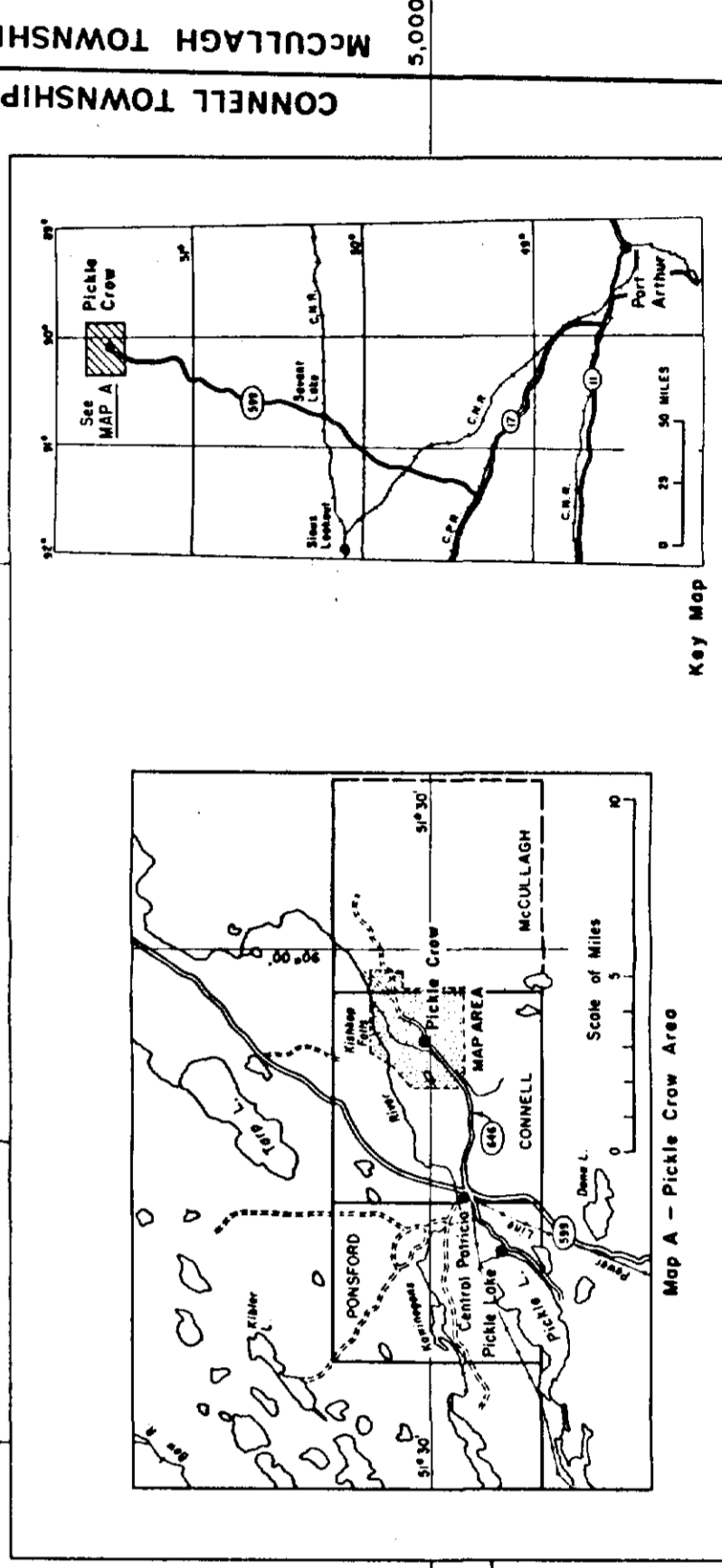
Drill hole locations and the rock types encountered in drilling are shown on this map. The location of the acid mine property and the location of the carbonate mine property are shown on this map. The location of the carbonate mine property is shown on this map. The location of the carbonate mine property is shown on this map.

Geology by K.C. McMurtry, Consulting Geologist, Pickle-Crow Gold Mines Limited, 1959, and by K.H. Newell, Jr., 1960. Geology, Pickle-Crow Gold Mines Limited, 1959.

Geology revised by additional surface mapping and by completion of surface drilling information by S.A. Ferguson, 1965. Additional outcrop locations taken from aerial photographs by S.A. Ferguson.

The designating letters 'P' have been omitted on this map to conform with the standard practice of the Geological Survey of Canada. The designating letters 'P' have been omitted on this map to conform with the standard practice of the Geological Survey of Canada.

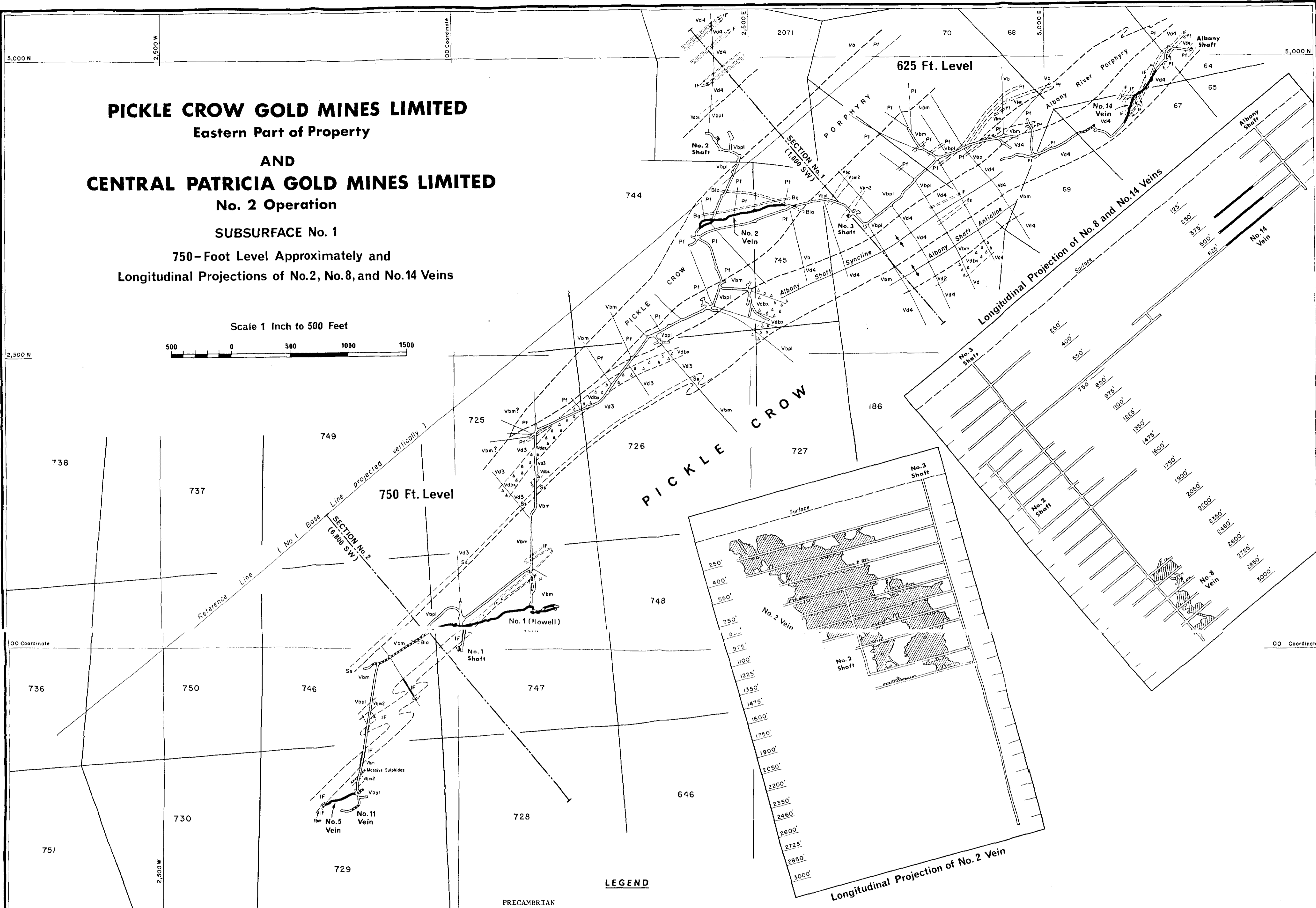
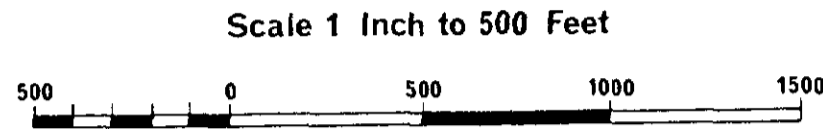
Magnetic declination is 1 to 2 degrees East, 1965.



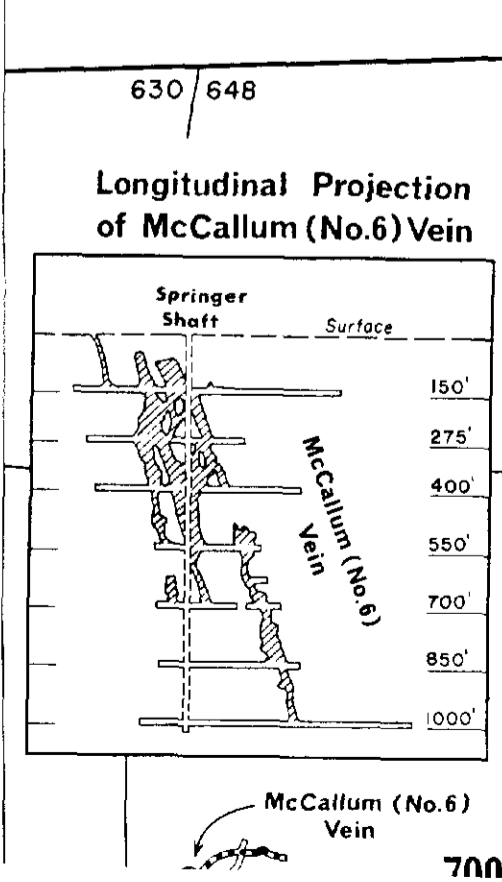
CENTRAL PATRICIA (No. 2 OPERATION)



**PICKLE CROW GOLD MINES LIMITED**  
 Eastern Part of Property  
**AND**  
**CENTRAL PATRICIA GOLD MINES LIMITED**  
 No. 2 Operation  
 SUBSURFACE No. 1  
 750-Foot Level Approximately and  
 Longitudinal Projections of No. 2, No. 8, and No. 14 Veins



**CENTRAL PATRICIA (No. 2 OPERATION)**



**LEGEND**

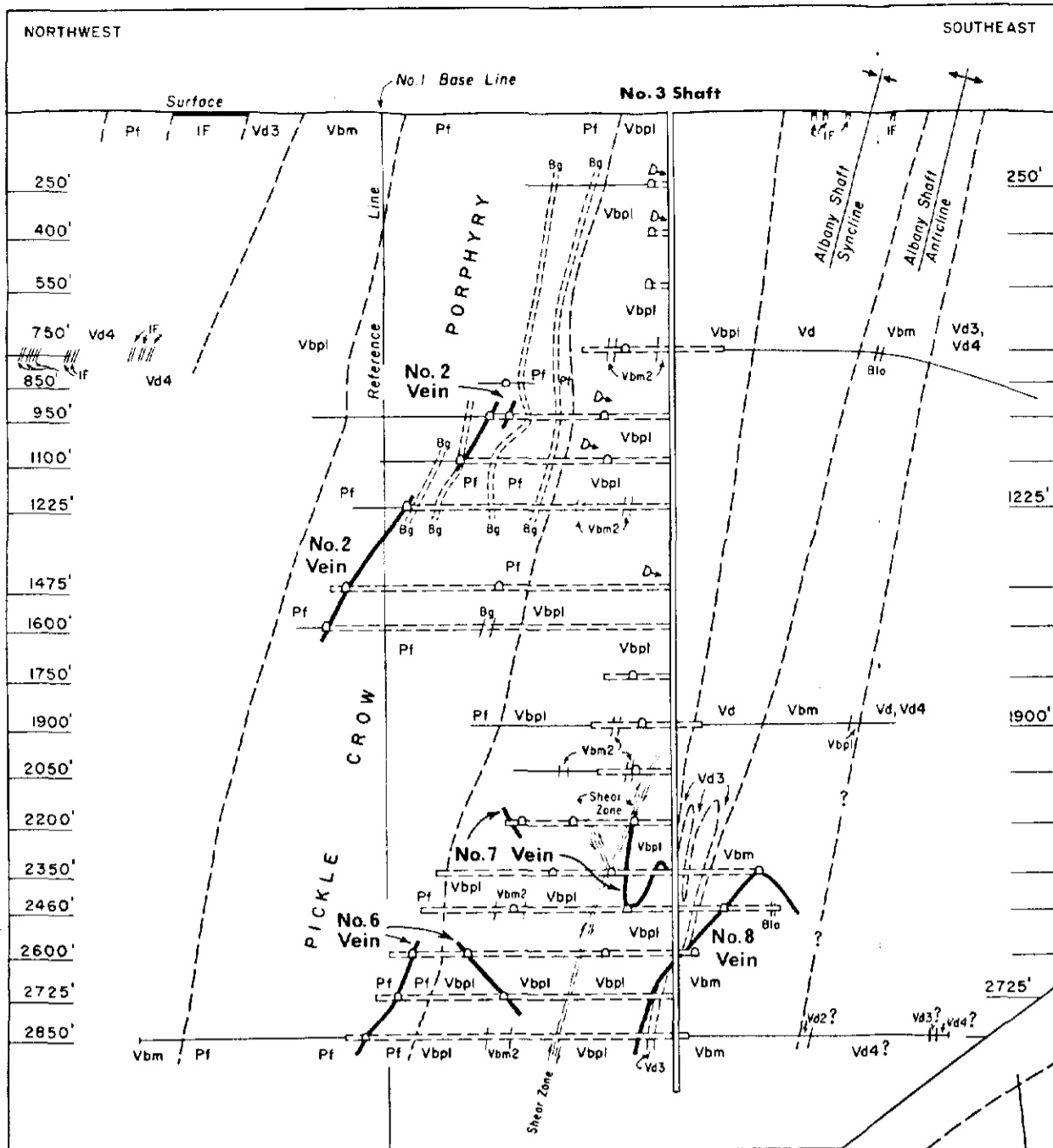
- PRECAMBRIAN**  
 LATE DIKE ROCKS  
 Bla Lamprophyre.  
 Bg Metagabbro
- INTRUSIVE CONTACT**  
 PF Quartz-feldspar porphyry.
- INTRUSIVE CONTACT**  
 ACID TO INTERMEDIATE METAVOLCANICS  
 Vd Porphyritic (feldspar) dacite.  
 Vd2 Dacite containing over 10 percent mafic minerals.  
 Vd3 Dacite, fine-grained, siliceous, sericitic.  
 Vd4 Dacite, fine-grained, chloritic.  
 Vd5 Dacite breccia.  
 IF Iron formation, magnetite-carbonate.  
 Ss Interbedded argillite.
- BASIC METAVOLCANICS**  
 Vbm Basalt (metabasalt), fine-grained, uniform, massive.  
 Vbm2 Basalt (metabasalt), medium-grained, uniform, massive.  
 Vbpl Basalt (metabasalt), fine-grained with pillows.  
 IF Iron formation, magnetite-carbonate.

- Breccia.
- Vein in underground workings.
- Drill hole intersection of ore grade.
- Ore on levels.
- Ore in place.
- Ore removed by stoping.
- Level with drill holes.

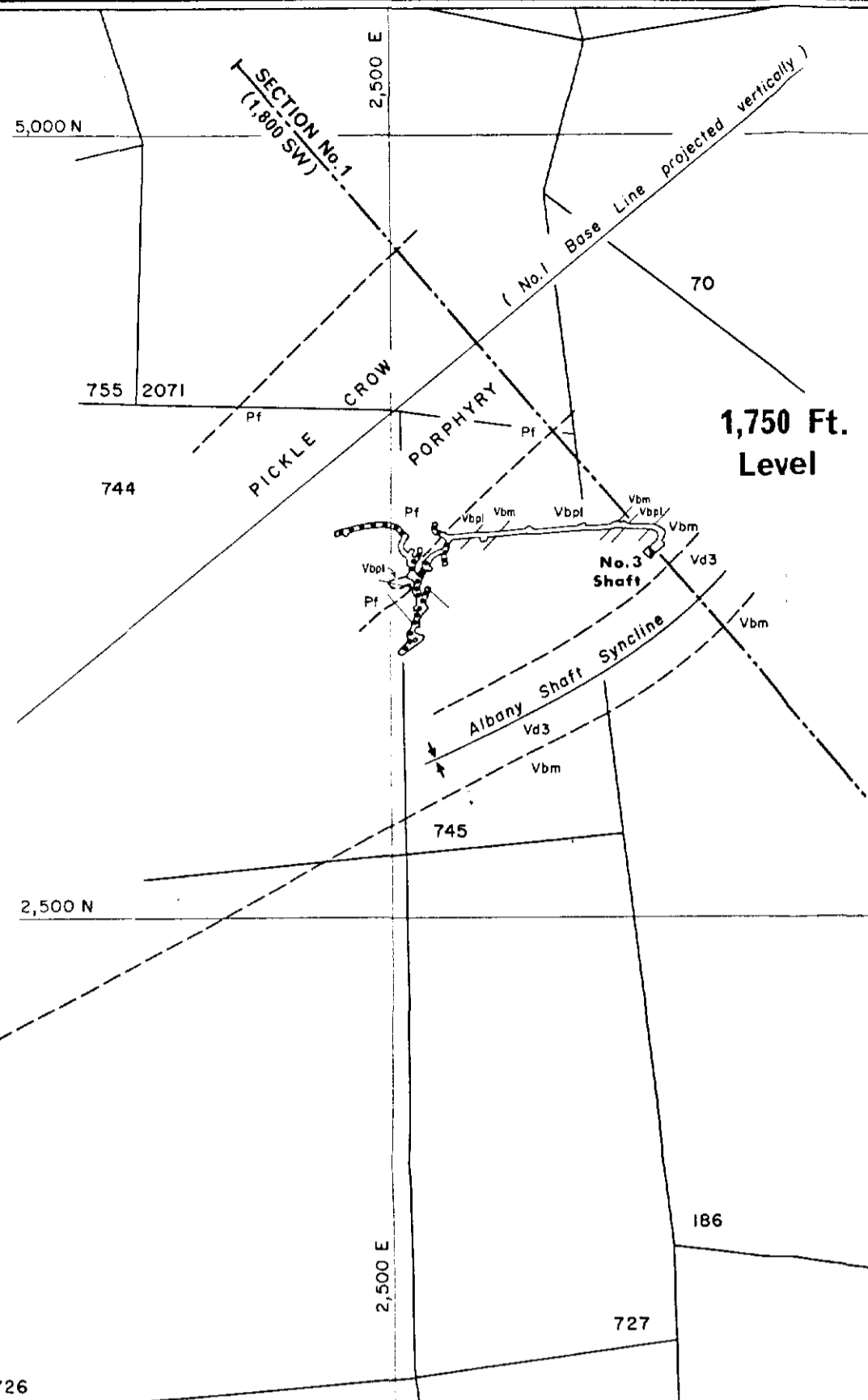
Geology compiled from company plans and sections by S.A. Ferguson 1966, with changes in legend by S.A. Ferguson.

52φ/08 NE-0032, #4

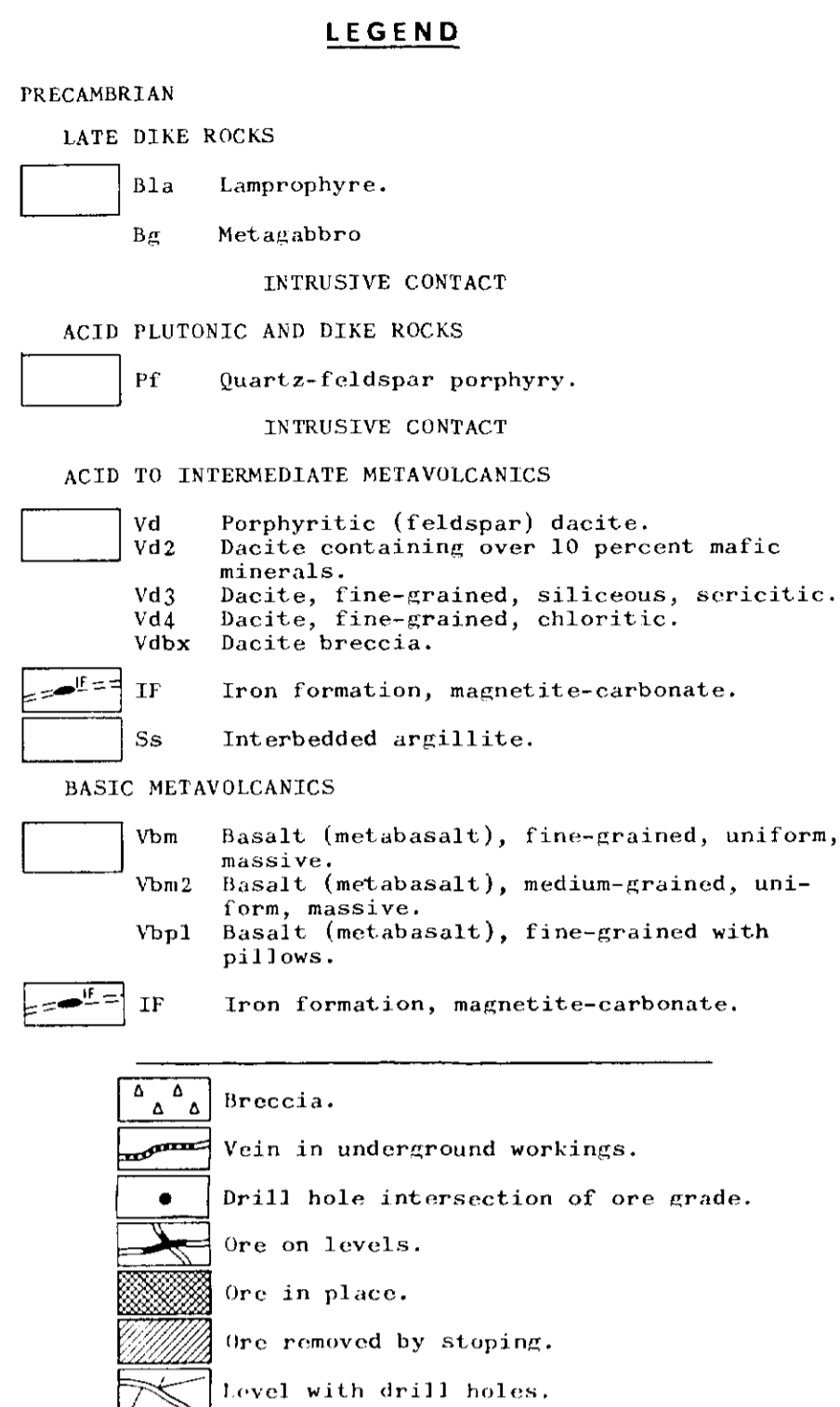




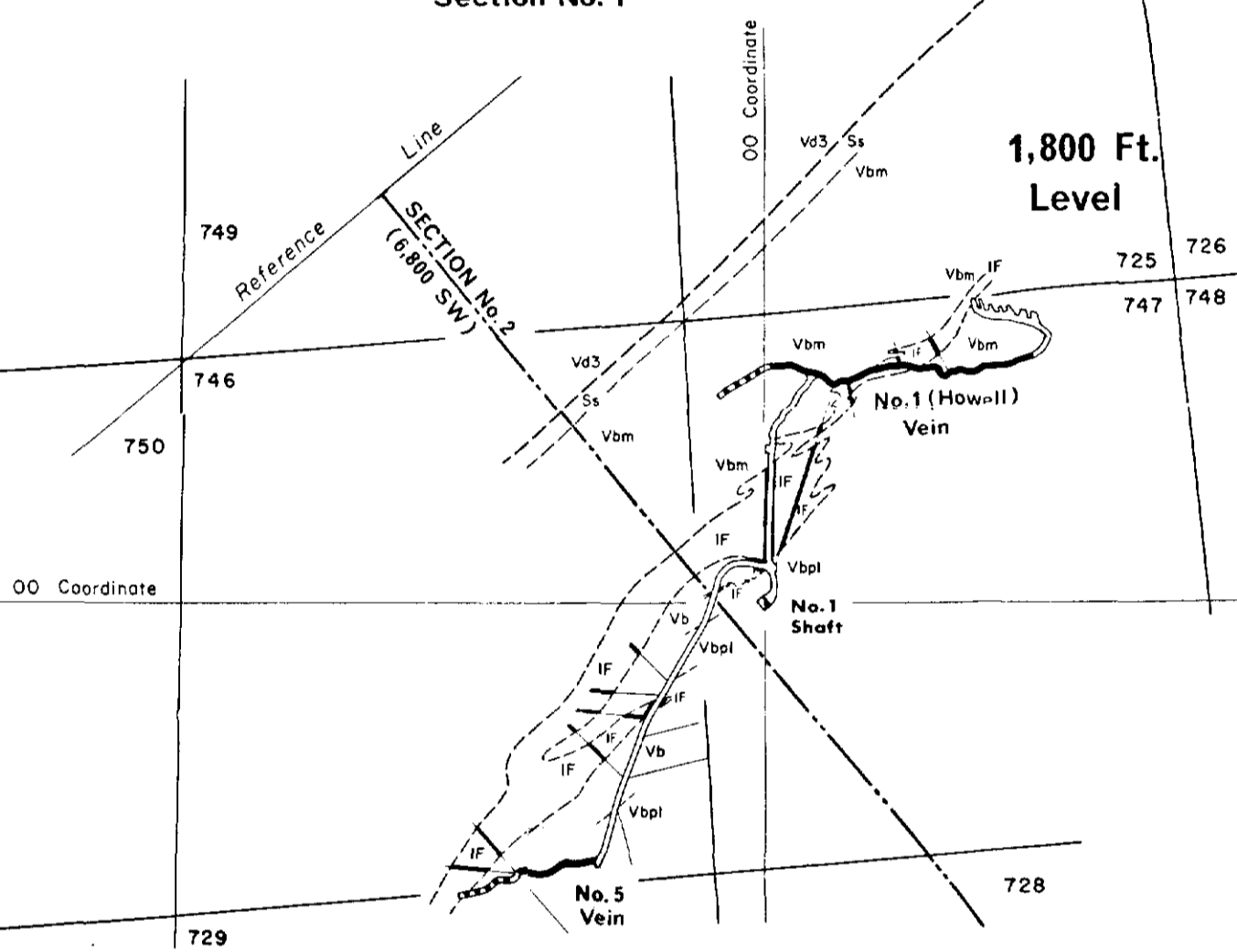
Section No. 1



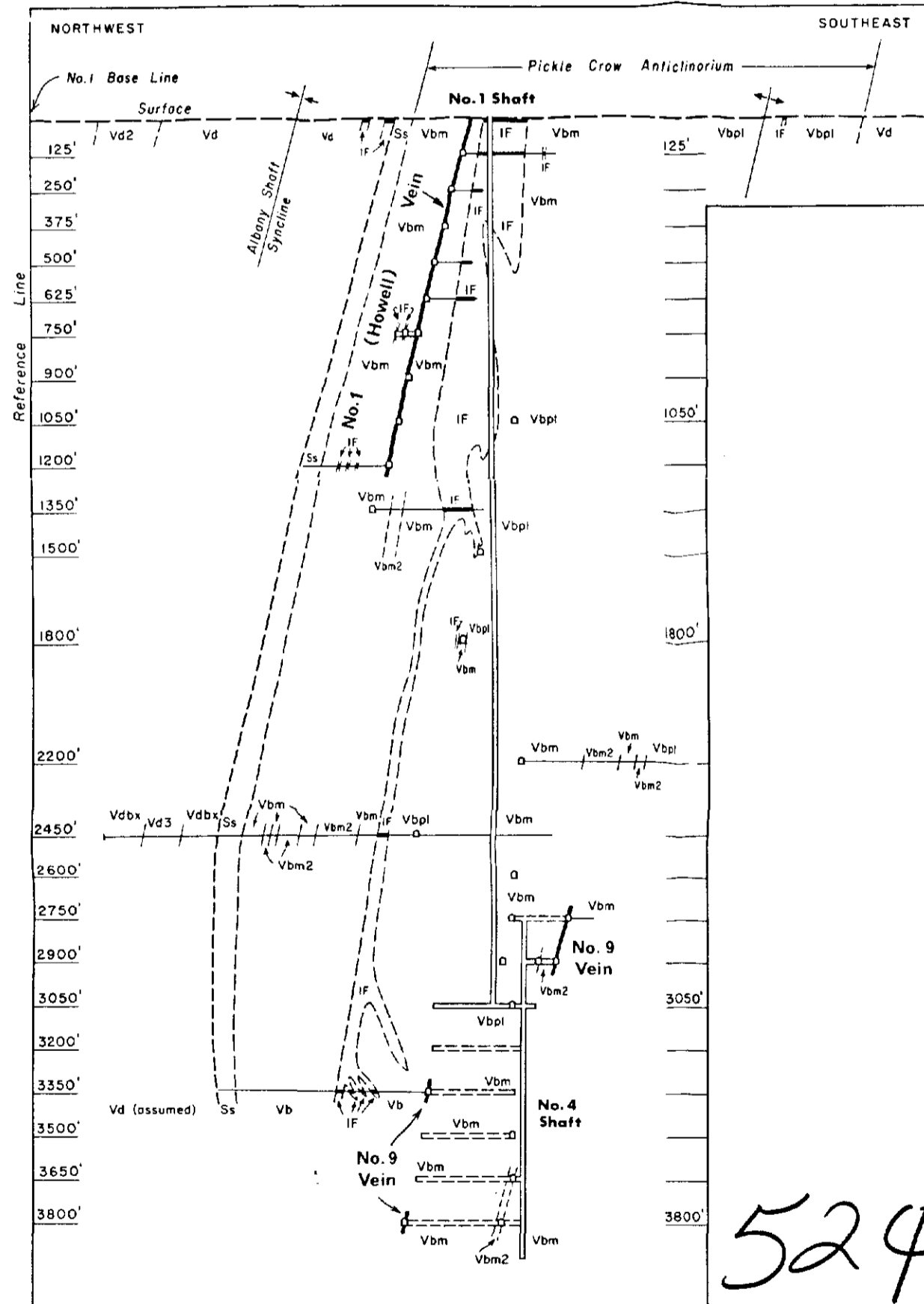
Section No. 2



Geology compiled from company plans and sections by S.A. Ferguson 1966, with changes in legend by S.A. Ferguson.



Longitudinal Projection of No. 1 and No. 5 Veins



52 φ/0 8NE - 0032  
#5

**PICKLE CROW GOLD MINES LIMITED**  
Eastern Part of Property

SUBSURFACE No. 2  
1,800-Foot Level Approximately, and Sections No. 1 and No. 2  
and Longitudinal Projection of No. 1 and No. 5 Veins

Scale 1 Inch to 500 Feet



52φ/08NE - 0032, #6

**PICKLE CROW GOLD MINES LIMITED**  
Eastern Part of Property

SUBSURFACE No.3

2,900-Foot Level Approximately and  
Longitudinal Projections of No.6, No.7, and No.9 Veins

Scale 1 Inch to 500 Feet



2,500 N

2,500 N

2900 Ft. Level

2850 Ft. Level

**LEGEND**

PRECAMBRIAN

LATE DIKE ROCKS

- Bla Lamprophyre.
- Bgr Metagabbro

INTRUSIVE CONTACT

ACID PLUTONIC AND DIKE ROCKS

- Pf Quartz-feldspar porphyry.

INTRUSIVE CONTACT

ACID TO INTERMEDIATE METAVOLCANICS

- Vd Porphyritic (feldspar) dacite.
- Vd2 Dacite containing over 10 percent mafic minerals.
- Vd3 Dacite, fine-grained, siliceous, sericitic.
- Vd4 Dacite, fine-grained, chloritic.
- Vdbx Dacite breccia.

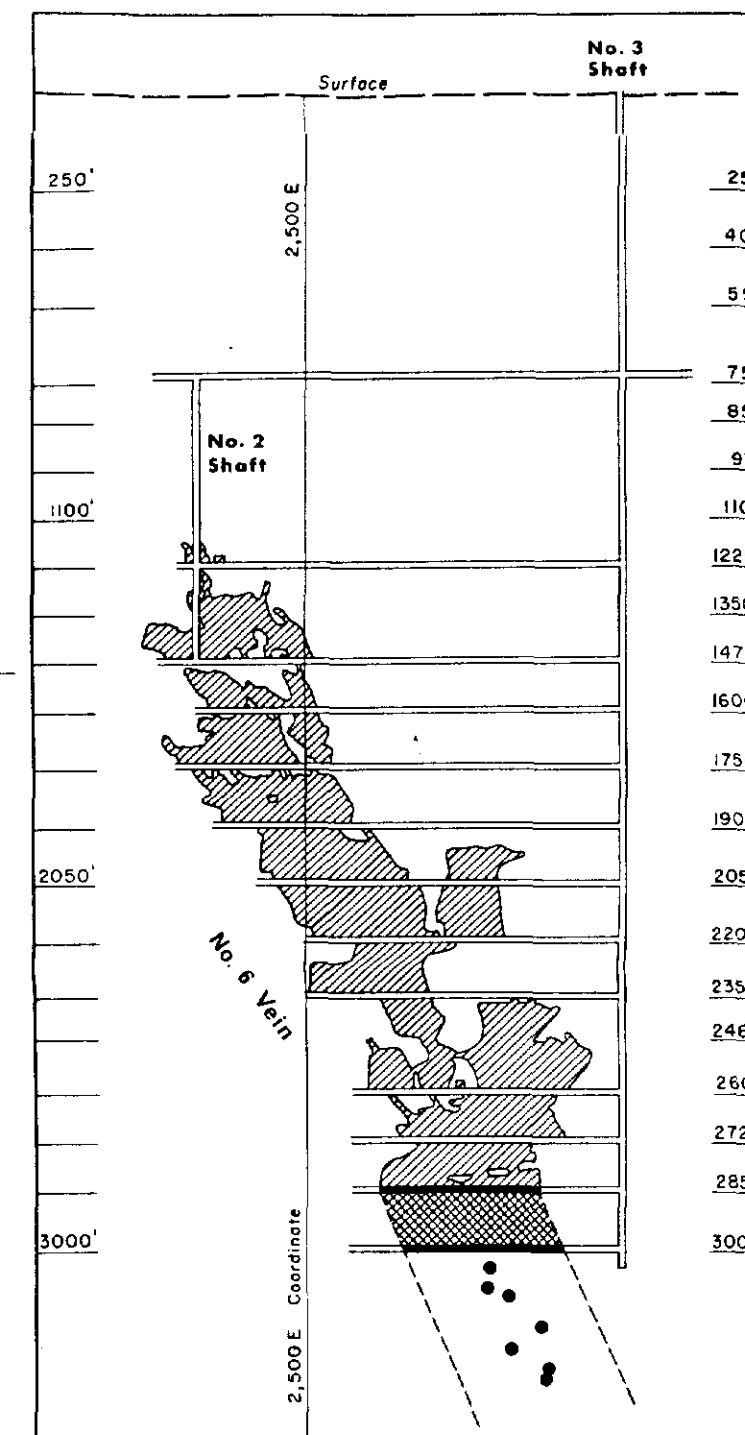
- IF Iron formation, magnetite-carbonate.
- Ss Interbedded argillite.

BASIC METAVOLCANICS

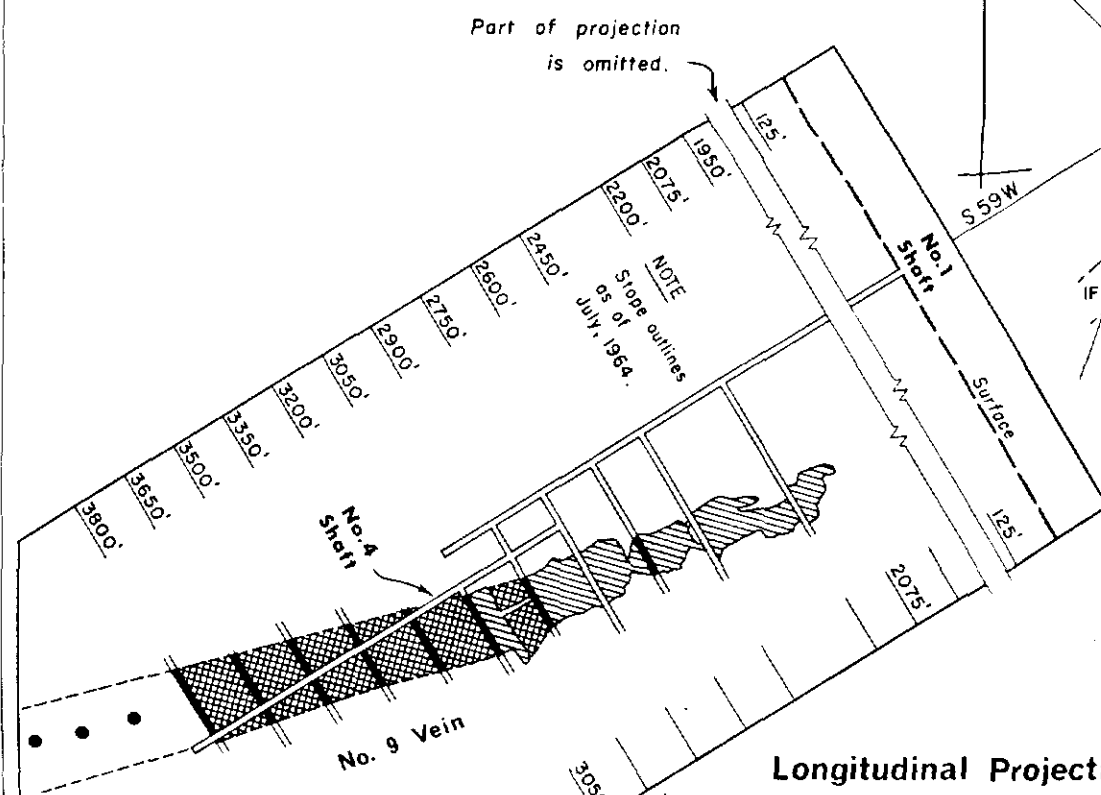
- Vbm Basalt (metabasalt), fine-grained, uniform, massive.
- Vbm2 Basalt (metabasalt), medium-grained, uniform, massive.
- Vbpl Basalt (metabasalt), fine-grained with pillows.
- IF Iron formation, magnetite-carbonate.

- △△△ Breccia.
- Vein in underground workings.
- Drill hole intersection of ore grade.
- Ore on levels.
- ▨ Ore in place.
- ▩ Ore removed by stoping.
- Level with drill holes.

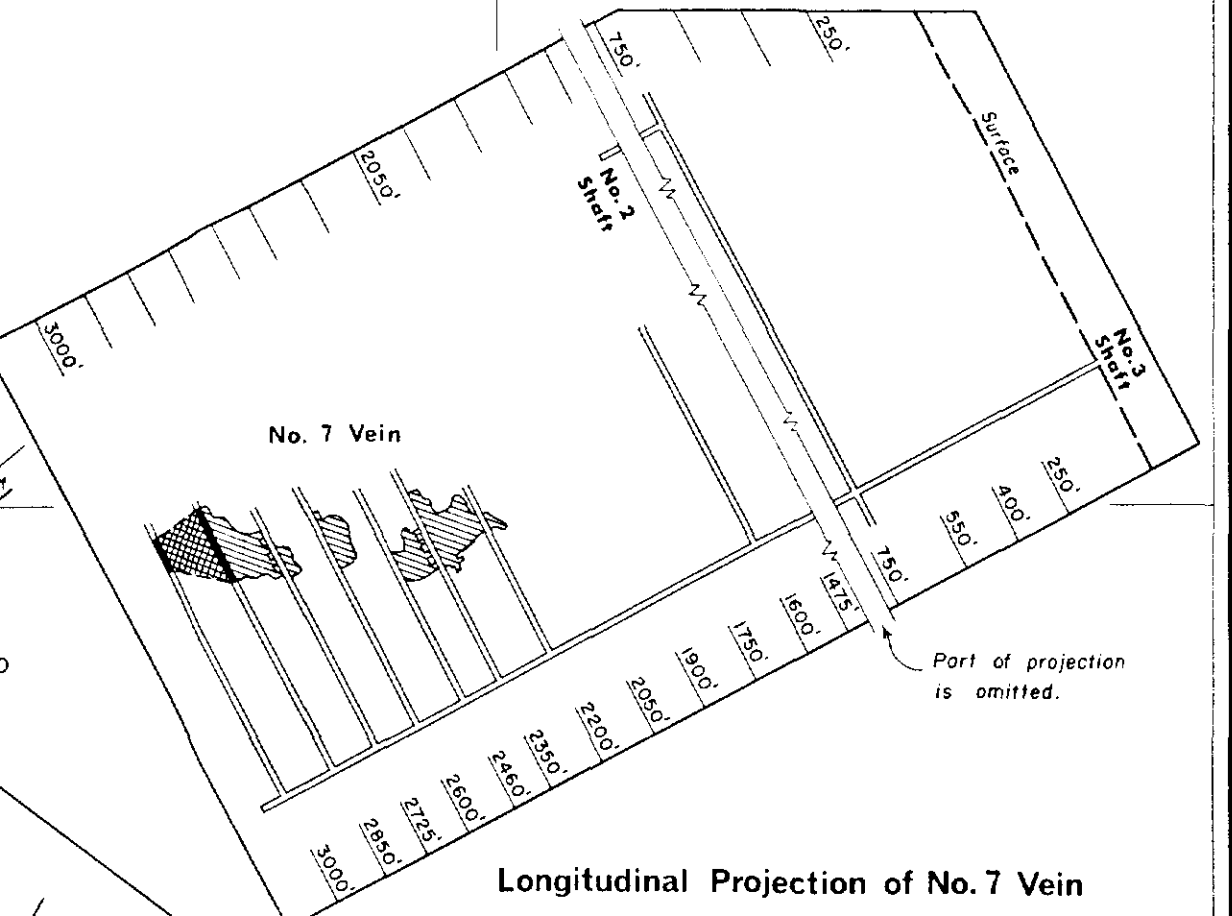
Geology compiled from company plans and sections by S.A. Ferguson 1966, with changes in legend by S.A. Ferguson.



Longitudinal Projection of No. 6 Vein

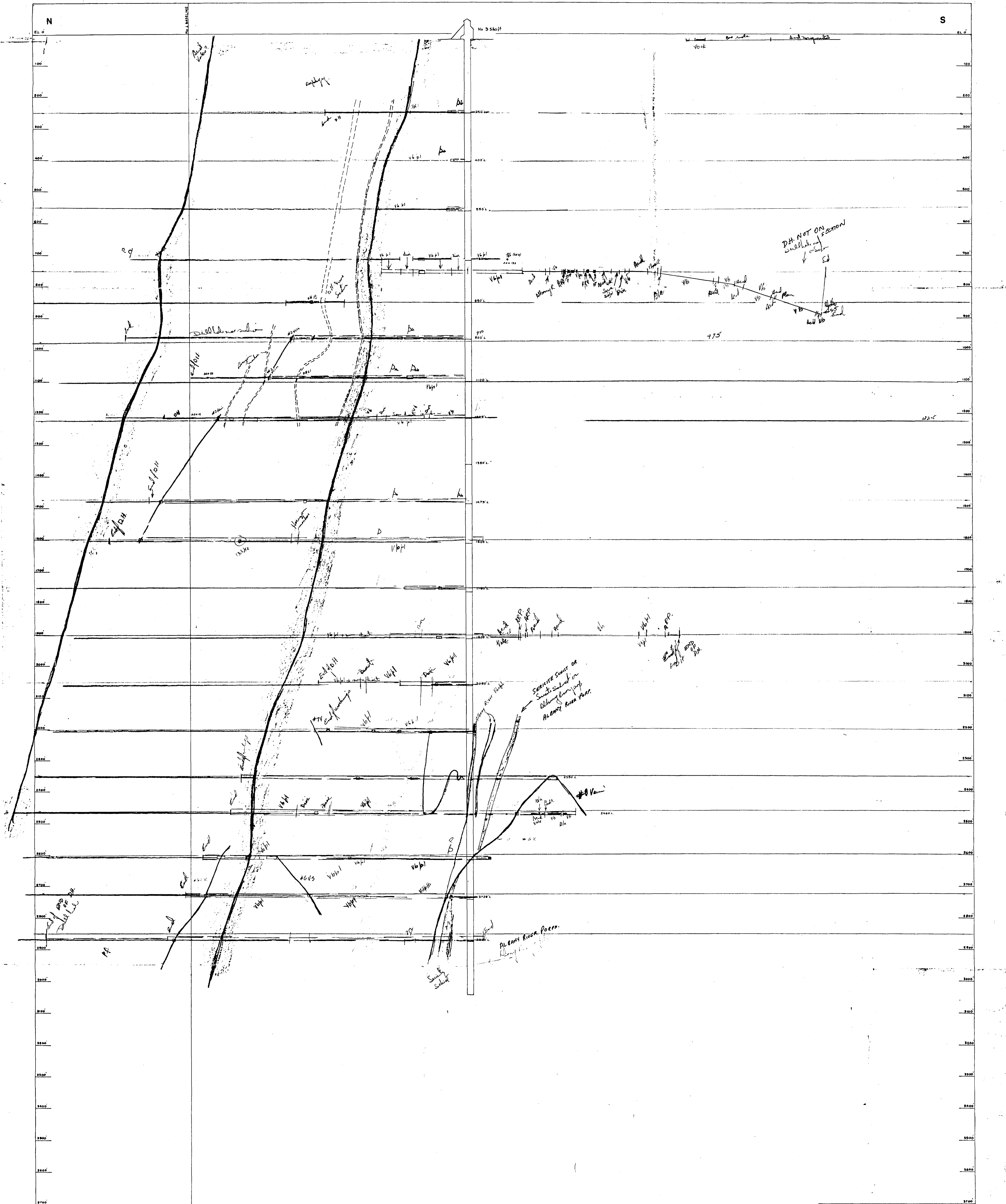


Longitudinal Projection of No. 9 Vein



Longitudinal Projection of No. 7 Vein

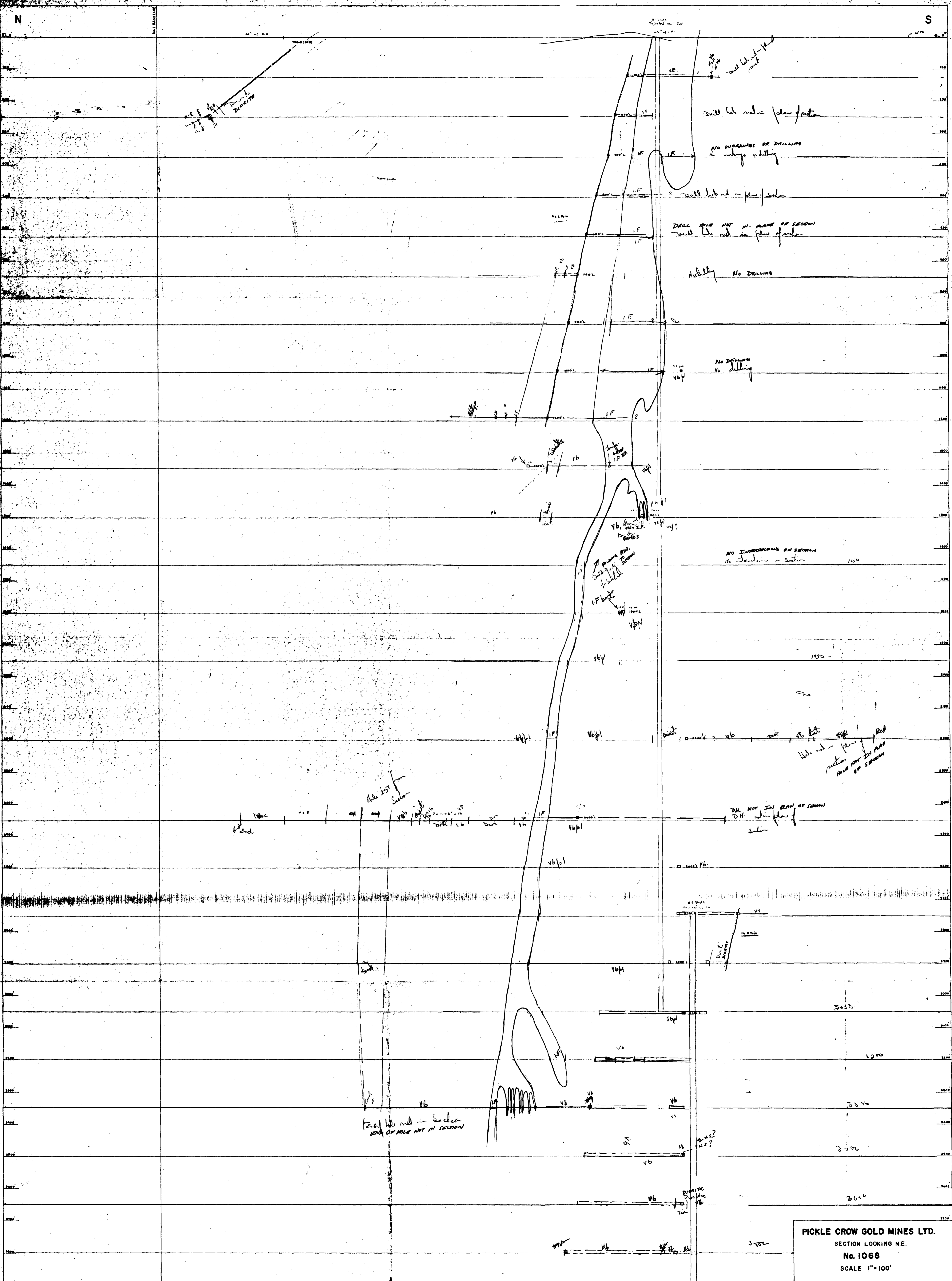




PICKLE CROW GOLD MINES LTD.  
SECTION LOOKING NE.  
No. 1018  
SCALE 1" = 100'







PICKLE CROW GOLD MINES LTD.  
SECTION LOOKING N.E.  
No. 1068  
SCALE 1"=100'

★ 52φ / 08NE - 0032, #8



CLAIM 736

TRENCHES 736 A.B.C.D.

Scale 1" = 60'

- A. 81P
- B. Green phase
- C. Claim Boundary
- D. Trail
- E. Sample Cuts



520095E134 520095E032 TARP LAKE

280

735

737

746

1.555' E N 4 Post 729

N 45°18' E

2.201' W  
240'

2.201' E  
240'

729.C

729.D

729.E

729.F

505' W N 1 Post 729

N 85°18' E

729.B

729

CLAIM 729

TRENCHES 729 B-C-D-E-F

Scale 1" = 20'

52 φ/08 NE - 0032, #9