

52 ϕ /11SW-0010-D1

LOAD: 16MM

DD #19



52011SW0040 52011SW0010D1 MCVICAR LAKE

010

Diamond Drilling

Area MC VICAR LAKE

Report NO 19

Work performed by: CARD LAKE COPPER MINES LTD.

Claim NO	Hole NO	Footage	Date	Note
KRL.61712	BL-1	700'	Oct/70	
KRL.61713	BL-2	712'	Oct/70	
KRL.61722	BL-3	675'	Oct/70	
TOTAL	3 DH	2087 FT		

Notes:

Boyes Lake, Ont. Property
 Red Lake Mining Division

RED LAKE COPPER MINES LIMITED
 D. D. HOLE No. BL-1

Loc. Claim KRL 61712 Dip collar : 45° Bearing collar : Grid North Length: 712 ft.

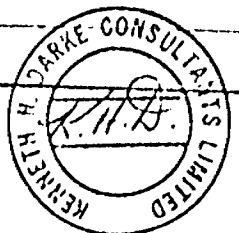
Picket Line B+00 E; Collar el. :
 11+20 N of Base Line 0+00 Bottom el. :

Drilled by: Summit Core size: AX Begun: Ended: Logged by K. Derke, P. Eng. A.N. Wright;

Samples	Footage drilled				Geology
	From	To	Len.	Rec.	
"Representative" Core Samples: (footage)				%	
	0	35	35	0	WATER (Boyes Lake).
	35	58	23	0	OVERBURDEN with Granitic boulders.
	58	145	87	100	GREENSTONE (Altered DIORITE ?).
	145				Altered DIORITE: massive; hard (siliceous); dk. green; rudimentary gneissic banding (foliation) exhibited by alignment of Chloritic pods.
(165')		258	113	"	165': foliation @ 85° to core axis.
	258				IRON FORMATION: intercalated bands of Chert & Magnetite layers.
		279	21	"	
	279	343	64	"	GREENSTONE
	343				Biotite-Chlorite-Quartz SCHIST (Altered
(401')					GREYWACKE); a few thin stringers Pyrrhotite-Pyrite.
		459	116	"	401': distinct banding @ schistosity @ 70° to c.a.
	459				IRON FORMATION: intercalated bands of altered
					Volcanics (Amphibolite) & Greywacke (Qtz.-Chl. Schist);
(494')		524	65	"	Magnetite is present in both rock types.
	524				IRON FORMATION: thin bands of Magnetite intercalated with a grey-coloured Qtz.-Chl. SCHIST; some
(527')					Cherty, Hematitic zones.
		530	6	"	527': bedding & Magnetite @ 84° to core axis.
(550')	530	563	33	"	Altered GABBRO (AMPHIBOLITE): massive; dk. green.
	563				Qtz.-Chl. SCHIST (Alt. GREYWACKE) & minor IRON
					FORMATION: only minor Magnetite; few stringers Pyrrhotite, Pyrite parallel to schistosity; few specks
(585')					Chalcopyrite.
		587	24	"	585': thinly bedded @ 83° to core axis.

*NOTE:- the following rock type descriptions are based upon an examination of the "representative" core samples noted as supplied by A.N. Wright & logged by K.H. Derke.

RED LAKE
 RECEIVED
 OCT 30 1971
 AM 7:00 10:11 12:12 3:15 R PM



D. D. Hole No. BL-1

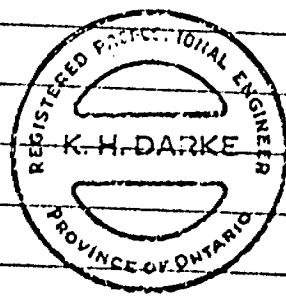
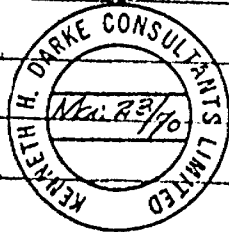
Length: 712 ft.
 Dip collar : Bearing collar : Collar el. :
 Bottom el. :

Drilled by: Core size: Begun: Feb 15/50 Ended: Feb 21/50 Logged by: K. Darke, P. Eng. & A.N. Wright

"TYPE" Samples	Footage drilled				Geology
	From	To	Len.	Rec. %	
				 continued from Page 1.
	587	642	55	100	GREENSTONE (Altered GABBRO ?).
(E45')	642				Qtz.-Chl. SCHIST (Altered GABBRO ?); few blebs & stringers of Pyrrhotite (magnetic), Pyrite, trace Chalcopyrite.
		660	18	"	Altered GABBRO (AMPHIBOLITE): weakly foliated.
(670') (700')	660	712	52	"	700': Qtz.-Chl. SCHIST.
		E N D O F H O L E			

A.N. Wright
 A.N. Wright, President
 CARD LAKE COPPER MINES LIMITED

K.H. Darke
 K.H. Darke, P. Eng.
 Consulting Geological Engineer
 KENNETH H. DARKE CONSULTANTS LIMITED



CARD LAKE COPPER MINES LIMITED

Boyes Lake, Ontario Property

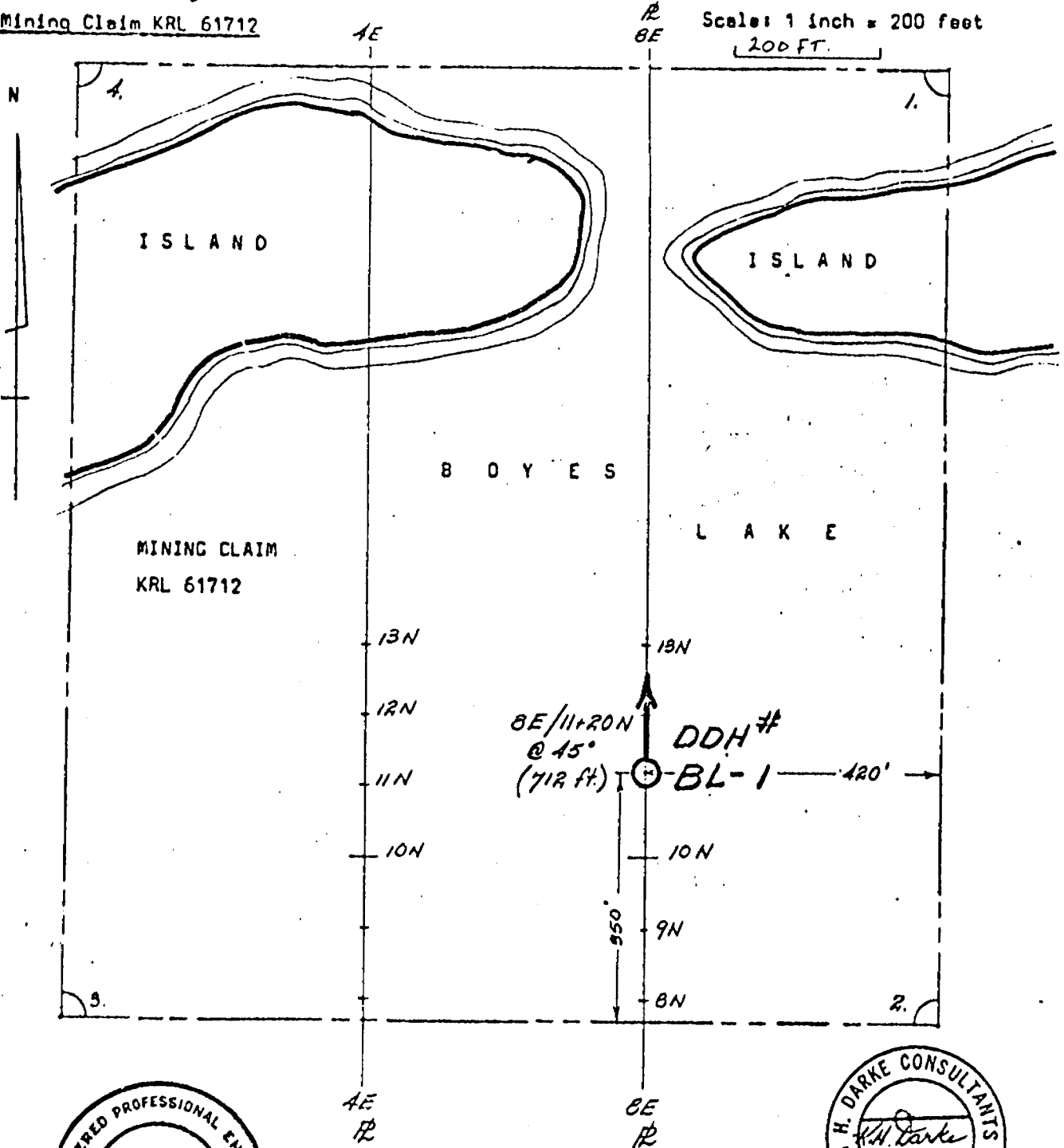
Red Lake Mining Division

Mining Claim KRL 61712

LOCATION SKETCH

Diamond Drill Hole No. BL-1

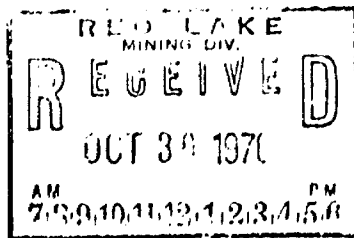
Scale: 1 inch = 200 feet
200 FT.



KENNETH H. DARKE CONSULTANTS LIMITED

K.H. Darke, P.Eng.

March 23, 1970



Boyes Lake, Ont. Property

CARD LAKE COPPER MINES LIMITED

D. D. HOLE No. BL-2

Boyes Lake Mining Division

Loc. Claim KRL 61713

Dip collar : 60° Bearing collar : Grid North Length: 712 ft.

Picket Line 24.00 E;

11.00 N of Base Line D-00

Drilled by: Summit

Core size: AX

Began:

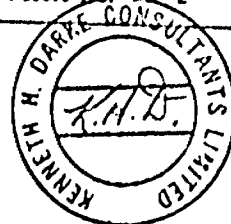
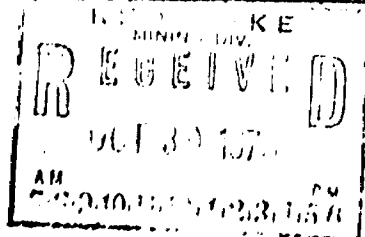
Ended:

A.N. Wright;

Logged by: K. Darke, P. Eng.

Samples	Footage drilled				Geology
	From	To	Len.	Rec.	
"Representative" Core				%	*NOTE:- the following rock type descriptions are based upon an examination of the "representative" core samples noted as supplied by A.N. Wright & logged by K.H. Darke.
Core (footage)					
	0	30	30	0	WATER (Boyes Lake).
	30	60	30	0	OVERBURDEN : contains boulders.
	60				Quartz-Biotite-Chlorite SCHIST (Altered
(90')		119	59	100	GREYWACKE ?): rudimentary schistosity only.
(138')	119				Qtz.-Chl. SCHIST (Alt. GREYWACKE ?): Pyrite,
(217')					Pyrrhotite stringer.; banding & foliation @ 60° to
(221')					core axis.
		250	131	"	217': banded; Garnetiferous.
	250				221': Quartz pods with Pyrrhotite, minor Pyrite.
(258')					Interbanded Qtz.-Chl.-Biot. SCHIST &
(280')					AMPHIBOLITE (Gabbro ?):
		390	140	"	280': Alt. Greywacke(?); thinly bedded @ 63° to c.e.
	390				IRON FORMATION: alternating bands of Chert
(400')					& Magnetite; layers 1/32" - 1/8".
(410')		410	20	"	400': banding @ 66° to core axis.
	410	415	5	"	410': numerous Pyrrhotite, Pyrite stringers.
	415	500	85	"	TUFF; minor sulphides
	500				GABBRO
(506')					Qtz.-Chl. SCHIST (Alt. GREYWACKE): dk. green;
(561')					thinly bedded; few thin seams Pyrite; some Magnetite.
(581')		640	140	"	581': Schistosity (bedding?) @ 73° to core axis.
(616')					595-600': bands of Magnetite.
	640				IRON FORMATION: alternating bands of Chert
(644')					& Magnetite; layers 1/8" - 1/4".
		644	4	"	644': bands @ 79° to core axis; highly magnetic.
	644				Altered RHYOLITE (?): cherty; greyish-black;
					contorted banding or rudimentary schistosity; numerous
(665')					Pyrrhotite, Pyrite blebs & stringers; minor Chalcopyrite.
(668')		675	31	"	668': Alt. DIORITE-QTZ. GABBRO with dissem. Pyrrhotite.
	675				Qtz.-Chl. SCHIST (Alt. GREYWACKE); thinly bedded;
(677')					few strgs. Magnetite & minor Po, Py, Chalcopyrite.
		678	3	"	677': sulphides & sch. @ 76° to
					core axis.

D. D. Hole No. BL-2



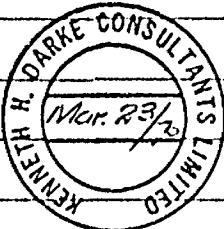
Loc. Dip collar : Bearing collar : Length: 712 ft.
 : : Collar el. :
 : : Bottom el. :

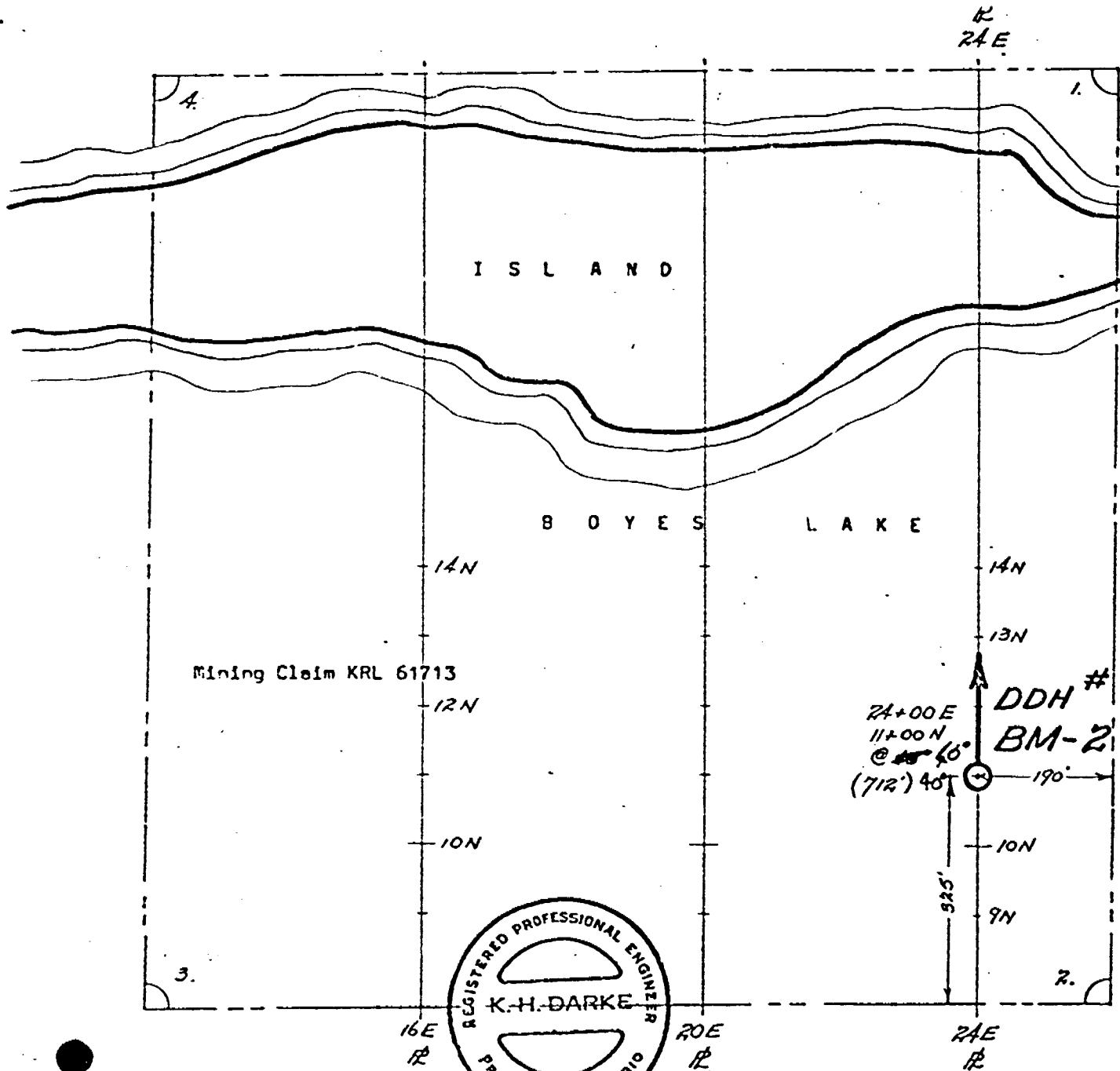
Drilled by: Core size: Begun: Feb 22/70 Ended: Nov 1/70 Logged by: K. Darke, P. Eng.
 A.N. Wright;

"TYPE" Samples	Footage drilled				Geology
	From	To	Len.	Rec. %	
				 continued from Page 1.
678 (686')					Altered GABBRO (AMPHIBOLITE) with intercalated SHALE (Mudstone); rudimentary gneissic banding; few Pyrite stringers.
(710')		712	34	100	686': banding (bedding?) @ 78° to core axis. 710': rudimentary gneissic banding @ 75° to c.e.
		E N D O F H O L E			

A. N. Wright
 A.N. Wright, President
 CARD LAKE COPPER MINES LTD.

K. H. Darke
 K.H. Darke, P. Eng.
 Consulting Geological Engineer
 KENNETH H. DARKE CONSULTANTS LTD.

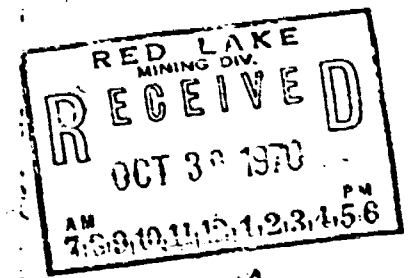
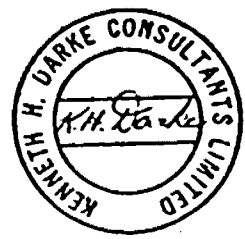




CARD LAKE COPPER MINES LTD.
Boyes Lake, Ontario Property
 Red Lake Mining Division
Mining Claim KRL 61713

LOCATION SKETCH
Diamond Drill Hole No. BL-2

Scale: 1 inch = 200 feet
 200 FT



KENNETH H. DARKE CONSULTANTS LIMITED
 K.H. Darke, P.Eng.; March 23, 1970

CARD LAKE COPPER MINES LIMITED

Boyes Lake, Ont. Property

D. D. HOLE No. BL-3

Red Lake Mining Division

Loc. Claim KRL 61722

Dip collar : 45° Bearing collar : Grid North Length: 675 ft.

Picket Line 32+00 E;

Collar el. :

13+00 S of Base Line 0+00

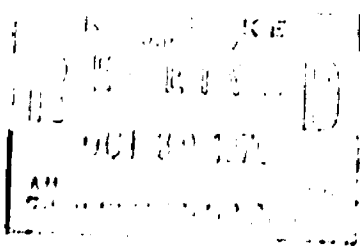
Bottom el. :

Drilled by: Summit Core size: AX Begun: May 3/37 Ended: May 13/37 Logged by: A.N. Wright; K. Darke, P. Eng.

Samples	Footage drilled				Geology
	From	To	Len.	Rec.	
"Representative" Core Samples (footage)				%	*NOTE:- the following rock type descriptions are based upon an examination of the "representative" core samples noted as supplied by A.N. Wright & logged by K.H. Darke.
	0	20	20	0	WATER (Boyes Lake).
	20	70	50	0	OVERBURDEN
	70				Altered QUARTZ GABBRO: massive; med.-fine grained; minor disseminated Pyrrhotite throughout.
(168') (265') (331')		375	305	100	265': Quartz Vein (bull-white); with blebs & pods of massive Pyrite, Pyrrhotite, minor Chalcopyrite.
	375				Quartz-Chlorite SCHIST (Altered GREYWACKE): finely bedded; minor Pyrrhotite along schistosity (bedding ?) planes.
(398') (400')		404	29	"	400': few strgs. & blebs of Pyrite, Pyrrhotite.
	404				Qtz.-Chl. SCHIST (Altered TUFF ?): contorted, irregular bands of Cherty & Argillaceous layers; Pyrrhotite (magnetic), minor Pyrite.
(422')					458': 25% sulphides; Pyrrhotite, minor Pyrite, few specks Chalcopyrite.
(458')		490	86	"	488-90': Quartz Vein with sulphides; trace Chalcopyrite(?)
	490				Qtz.-Chl. SCHIST (Alt. GREYWACKE): grey; rudimentary schistosity only; sulphides (Po,Py, tr. Cpy).
(510')		516	26	"	510': 5% Sulphides; Pyrrhotite, minor Chalcopyrite.
	516				Altered QUARTZ DIORITE: generally massive; disseminated Pyrrhotite, minor Pyrite.
(614')		675	159	"	614': blebs Pyrrhotite, minor Pyrite. (magnetic)
					E N D O F H O L E

A.N. Wright, President
CARD LAKE COPPER MINES LIMITED

K.H. Darke
K.H. Darke, P. Eng.
Consulting Geological Engineer
KENNETH H. DARKE CONSULTANTS LTD.
D. D. Hole No. BL-3

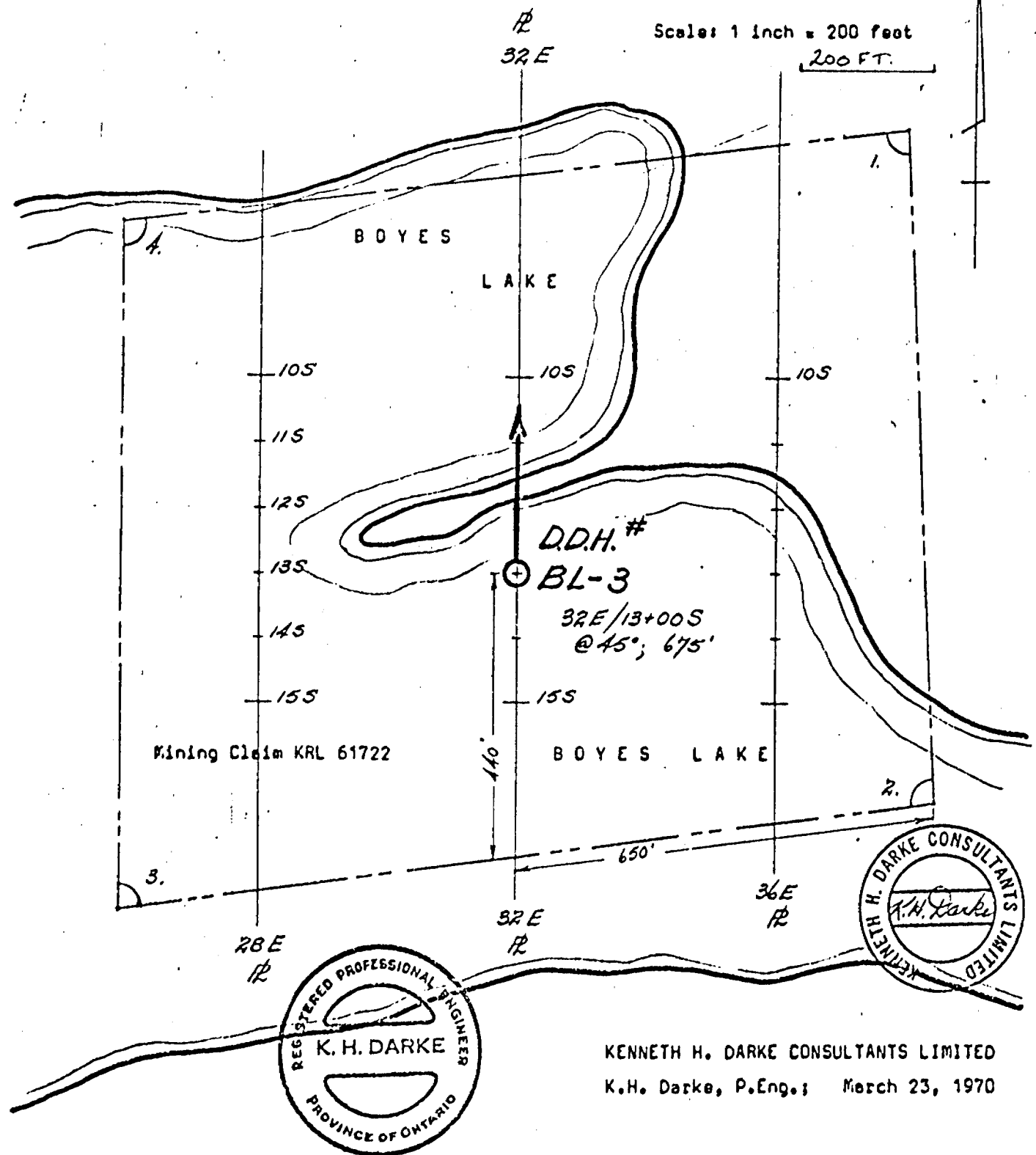




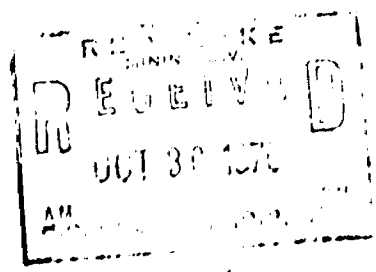
CARD LAKE COPPER MINES LIMITED
Boyes Lake, Ontario Property
 Red Lake Mining Division
 Mining Claim No. KRL 61722

LOCATION SKETCH
Diamond Drill Hole No. BL-3

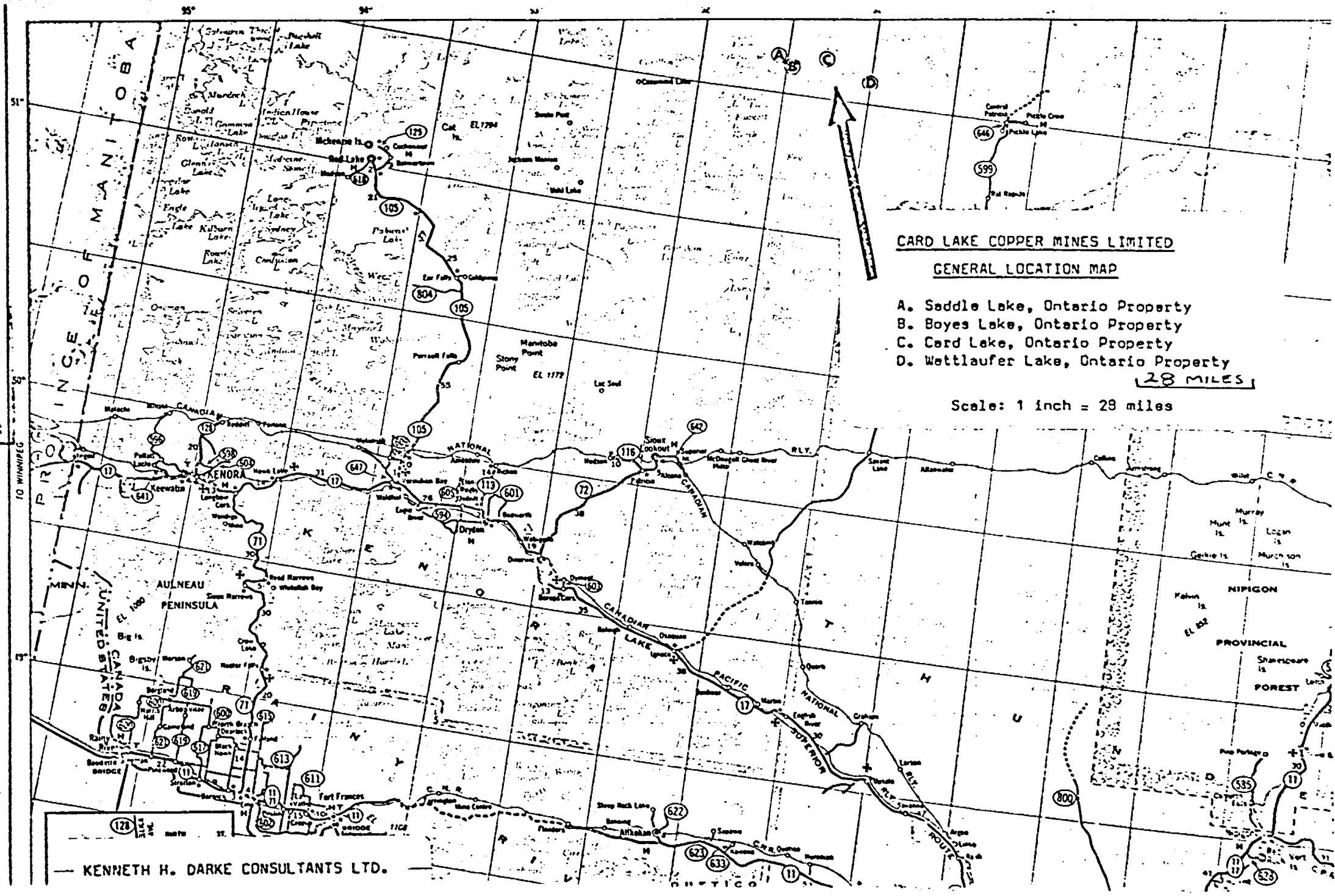
Scale: 1 inch = 200 feet
 200 FT.



KENNETH H. DARKE CONSULTANTS LIMITED
 K.H. Darke, P.Eng.; March 23, 1970



RECEIVED
 OCT 30 1970
 AM 10:23:45 PM

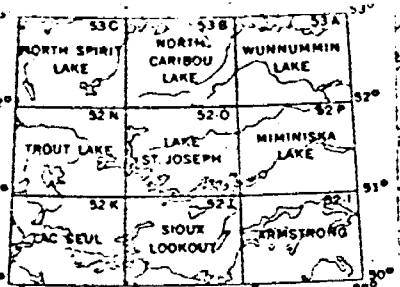


CARD LAKE COPPER MINES LIMITED
GENERAL LOCATION MAP

- A. Saddle Lake, Ontario Property
 - B. Boyes Lake, Ontario Property
 - C. Card Lake, Ontario Property
 - D. Wettlaufer Lake, Ontario Property
- 28 MILES**

Scale: 1 inch = 28 miles

KENNETH H. DARKE CONSULTANTS LTD.



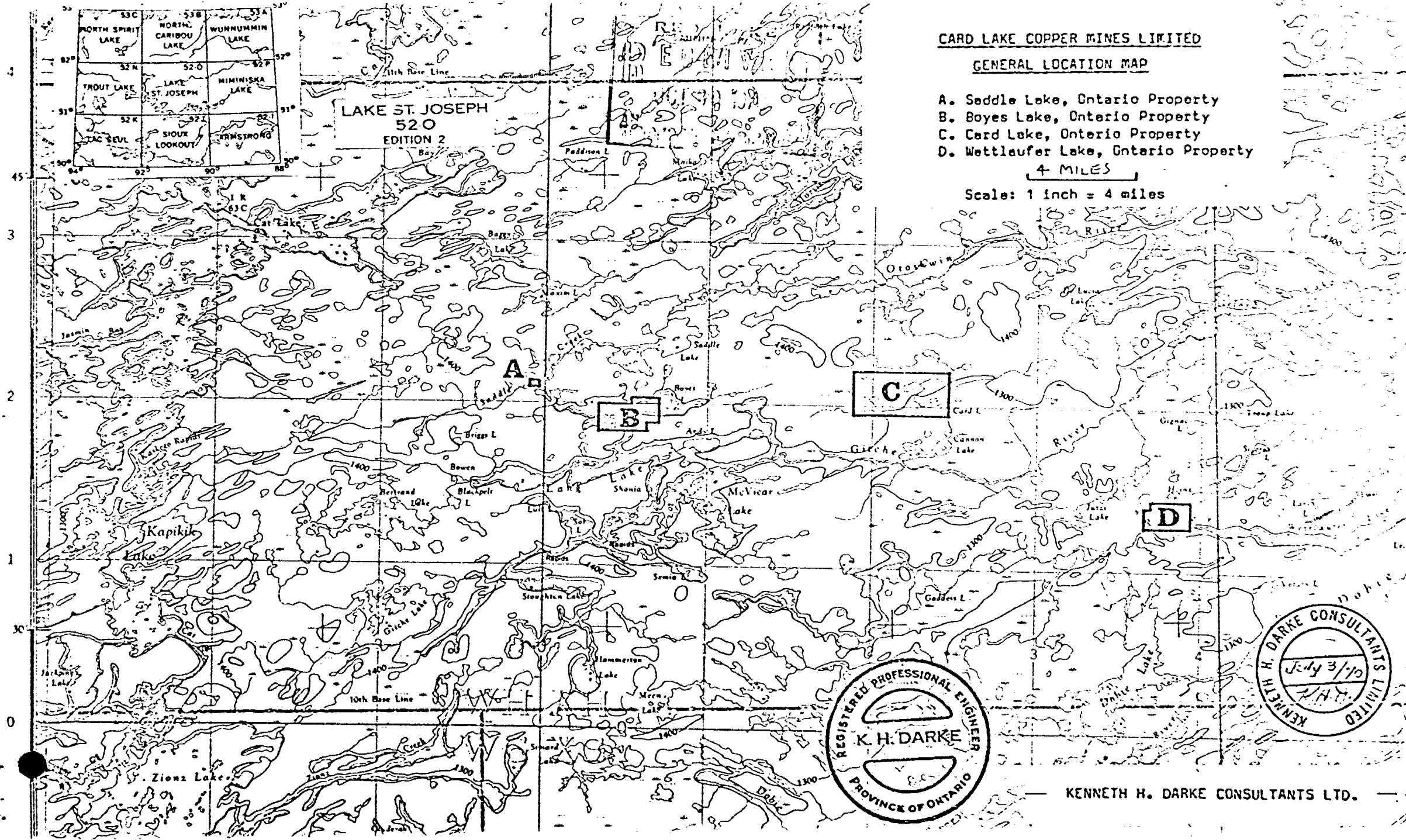
LAKE ST. JOSEPH
52 O
EDITION 2

CARD LAKE COPPER MINES LIMITED
GENERAL LOCATION MAP

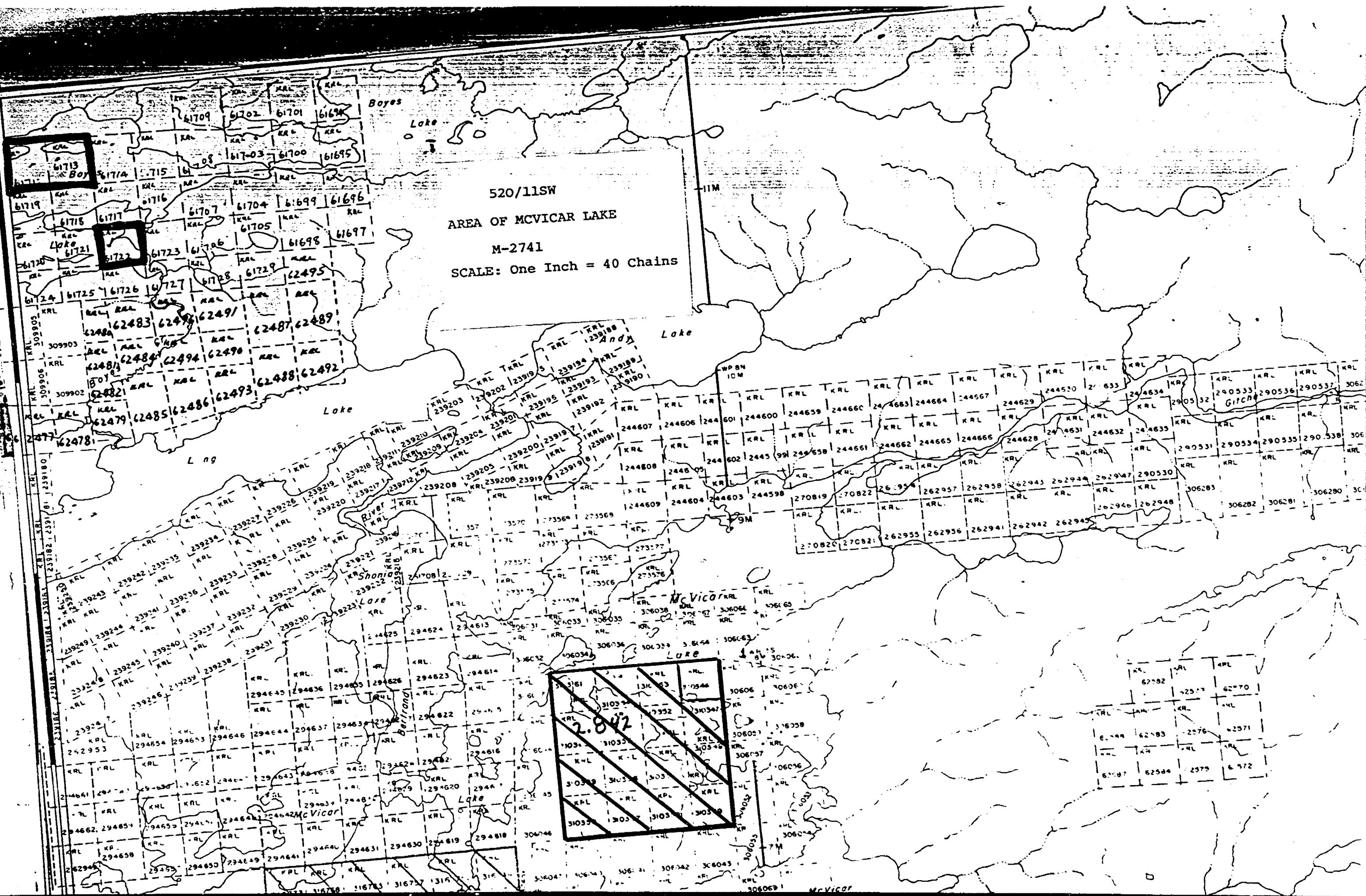
- A. Saddle Lake, Ontario Property
- B. Boyes Lake, Ontario Property
- C. Card Lake, Ontario Property
- D. Wettlaufer Lake, Ontario Property

4 MILES

Scale: 1 inch = 4 miles



KENNETH H. DARKE CONSULTANTS LTD.



520/11SW
AREA OF MCVICAR LAKE
M-2741
SCALE: One Inch = 40 Chains

61713
Boy

61718
61721
Lake

61724
61725
61726
61727

62481
62482
62483
62484
62485
62486
62487
62488
62489

62471
62478
62479
62481
62485
62486
62493

239182
239183
239184
239185
239186
239187
239188
239189
239190

239241
239242
239243
239244
239245
239246
239247
239248
239249

239251
239252
239253
239254
239255
239256
239257
239258
239259

239261
239262
239263
239264
239265
239266
239267
239268
239269

239271
239272
239273
239274
239275
239276
239277
239278
239279

239281
239282
239283
239284
239285
239286
239287
239288
239289

61709
61702
61701
61694
61703
61700
61695

61704
61699
61696
61705
61698
61697

61707
61704
61699
61696
61705
61698
61697

62491
62483
62484
62494
62498
62487
62489
62488
62492

239201
239202
239203
239204
239205
239206
239207
239208
239209

239211
239212
239213
239214
239215
239216
239217
239218
239219

239221
239222
239223
239224
239225
239226
239227
239228
239229

239231
239232
239233
239234
239235
239236
239237
239238
239239

239241
239242
239243
239244
239245
239246
239247
239248
239249

239251
239252
239253
239254
239255
239256
239257
239258
239259

239261
239262
239263
239264
239265
239266
239267
239268
239269

Boyes
Lake

McVicar
Lake

River

Shonia
Lake

Belton
Lake

McVicar
Lake

2842

11M

Lake

WPBN
10M

9M

McVicar
Lake

Lake

McVicar
Lake

McVicar
Lake

240531
240532
240533
240534
240535
240536
240537
240538
240539

240541
240542
240543
240544
240545
240546
240547
240548
240549

240551
240552
240553
240554
240555
240556
240557
240558
240559

240561
240562
240563
240564
240565
240566
240567
240568
240569

240571
240572
240573
240574
240575
240576
240577
240578
240579

240581
240582
240583
240584
240585
240586
240587
240588
240589

240591
240592
240593
240594
240595
240596
240597
240598
240599

240601
240602
240603
240604
240605
240606
240607
240608
240609

240611
240612
240613
240614
240615
240616
240617
240618
240619

240621
240622
240623
240624
240625
240626
240627
240628
240629

290531
290532
290533
290534
290535
290536
290537
290538
290539

290541
290542
290543
290544
290545
290546
290547
290548
290549

290551
290552
290553
290554
290555
290556
290557
290558
290559

290561
290562
290563
290564
290565
290566
290567
290568
290569

290571
290572
290573
290574
290575
290576
290577
290578
290579

290581
290582
290583
290584
290585
290586
290587
290588
290589

290591
290592
290593
290594
290595
290596
290597
290598
290599

290601
290602
290603
290604
290605
290606
290607
290608
290609

290611
290612
290613
290614
290615
290616
290617
290618
290619

290621
290622
290623
290624
290625
290626
290627
290628
290629

306281
306282
306283
306284
306285
306286
306287
306288
306289

306291
306292
306293
306294
306295
306296
306297
306298
306299

306301
306302
306303
306304
306305
306306
306307
306308
306309

306311
306312
306313
306314
306315
306316
306317
306318
306319

306321
306322
306323
306324
306325
306326
306327
306328
306329

306331
306332
306333
306334
306335
306336
306337
306338
306339

306341
306342
306343
306344
306345
306346
306347
306348
306349

306351
306352
306353
306354
306355
306356
306357
306358
306359

306361
306362
306363
306364
306365
306366
306367
306368
306369

306371
306372
306373
306374
306375
306376
306377
306378
306379