

520/11SW-0013-A1

LOAD: 16MM

DD #12



52011SW0068 52011SW0013A1 MC VICAR LAKE

010

Diamond Drilling

Area MC VICAR LAKE

Report NO 12

Work performed by: KENLEW MINES LTD.

Claim NO	Hole NO	Footage	Date	Note
KRL.41753	1	300'	June/59	
KRL.41924	2	150'	June/59	
	3	175'	June/59	
KRL.41754	5	325'	June/59	
KRL.41729	6	225'	June/59	
<b>TOTAL</b>	<b>SDH</b>	<b>1175 Ft</b>		

Notes:

LOG OF DIAMOND DRILL HOLE NO.1

REPORT 12

LOCATION

500 feet East and 250 feet South of Post No.4  
Claim KRL 41753.

KENLEW MINES LTD  
McVICAR LAKE  
DISTRICT OF PATRICIA, ONTARIO

LOGGED BY:

G. W. FANCY

BEARING

North 13 degrees West

ANGLE

45 degrees at collar

DATE COMPLETED

June 18, 1959

FOOTAGE

DESCRIPTION

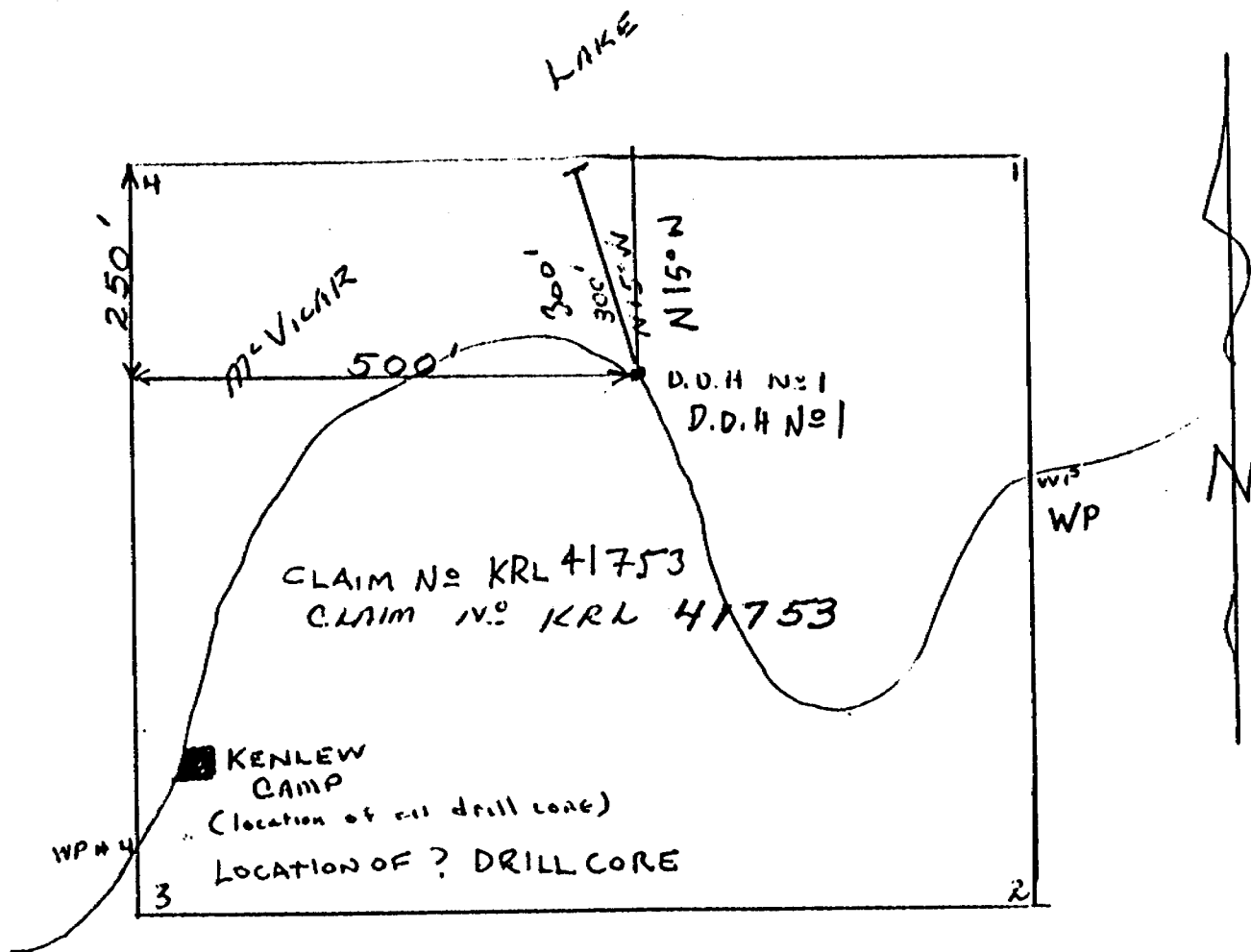
0 - 6	Casing
6 - 13.5	Porphyritic phase of Gabbro with small quartz veinlets and minor Pyrite mineralization.
13.5 - 21.2	Rhyolite Dyke with quartz veinlets and minor Pyrite mineralization.
21.2 - 75	Porphyritic Gabbro; numerous quartz veinlets, minor amounts of Pyrite and some chlorite alteration up to 45 feet. From 45 to 75 feet sulphide mineralization and alteration no longer exists.
75 - 81.7	Gabbro
81.7 - 82.5	Altered Granite
82.5 - 92.5	Gabbro
92.5 - 125	Gabbro with quartz stringers and slight chalcopyrite and pyrite mineralization.
125 - 126	Quartz veinlets with minor pyrite mineralization
126 - 188	Porphyritic Gabbro with quartz stringers and veinlets; mineralized slightly with chalcopyrite and pyrite.
188 - 193	Altered Granite
193 - 208	Altered Gabbro with quartz stringers; 6 inch and 3 inch barren quartz veins at 193.3 and 194.6 feet respectively. Small amounts of chalcopyrite and pyrite from 195 to 208 feet.
208 - 225	Blocky, highly fractured with coarse texture presumed to be altered Granite.
225 - 249	Gabbro Porphyry; quartz stringers with minor amounts of pyrite and chalcopyrite from 241.5 to 249.5 feet.
249 - 300	Feldspar Porphyry with minor amounts of pyrite from 250 to 256.5 feet and 277.2 to 277.8 feet. A 3 inch Rhyolite Dyke at 274.3 feet.



*G. W. Fancy*  
G. W. FANCY BASO

LOCATION DRILL HOLE No 1  
LOCATION DRILL HOLE No 1

KENLEW MINES LTD  
177 VICAR LAKE  
DISTRICT OF PATRICIA



LOCATION OF DRILL HOLE No 1  
500' East of 250' South  
of Post H, claim KRL 41753



BEARING N 15° W  
DISTANCE 300'  
ANGLE 45°

# REPORT 12

## LOG OF DIAMOND DRILL HOLE NO. 2

LOCATION: 500 Feet West and 350 feet North of Post No. 2  
Claim KRL 41924.

KENLEW MINES LTD.  
MOVICAR LAKE  
DISTRICT OF PATRICIA, ONTARIO

LOGGED BY: G. W. FANCY  
BEARING South 25 degrees West  
ANGLE 45 degrees at collar  
DATE COMPLETED: June 23rd, 1959

<u>FOOTAGE</u>	<u>DESCRIPTION</u>
0 - 6	Casing
6 - 9	Altered Greenstone
9 - 17.5	Basalt - fine grained
17.5 - 22	Altered Greenstone with 3 inch barren quartz vein at 20 feet
22 - 25	Gabbro Porphyry Dyke
25 - 40.8	Fine grained silicified Gabbro with numerous quartz veinlets and spotty Pyrite mineralization
40.8 - 42	Gabbro with slight Porphyritic texture; few quartz stringers
42-50	Fine grained Greenstone with quartz veinlets and spotty Pyrite mineralization
50 - 62.5	Basalt
62.5 - 71	Gabbro Porphyry
71 - 75	Silicified Gabbro with Pyrite mineralization at 72 feet
75 - 86	Basalt with occasional quartz veinlets; $\frac{1}{2}$ inch quartz vein at 82.5 feet.
86 - 91	Gabbro porphyry.
91 - 116	Silicified, altered Greenstone with numerous quartz veinlets and minor amounts of pyrite mineralization.
116 - 150	Gabbro Porphyry with numerous quartz veinlets and sulphide mineralization from 128 feet to 150 feet; 3 inch quartz vein at 143.5 feet.



*G. W. Fancy*  
G. W. FANCY BASO

LOG OF DIAMOND DRILL HOLE NO. 8

LOCATION

400 feet West and 300 feet North of Post No. 2  
Claim KRL 41924.

KENLEW MINES LTD  
MOVICAR LAKE  
DISTRICT OF PATRICIA, ONTARIO

LOGGED BY:

G. W. FANCY

BEARING

South 25 degrees West

ANGLE

45 degrees at collar

DATE COMPLETED

June 25, 1959

FOOTAGE

DESCRIPTION

0 - 1	Casing
12 - 25	Silicified Greenstone with slight Pyrite mineralization
25 - 46	Silicified Greenstone slightly chloritized; $\frac{1}{2}$ inch barren quartz vein at 44.7 feet.
46 - 46.5	5 inch Quartz Porphyry Dyke
46.5 - 48	Greenstone
48 - 50	Quartz Porphyry
50 - 66	Gabbro Porphyry with numerous quartz veinlets and stringers; 3 inch, 6 inch and 12 inch impure quartz veins at 51.7, 53.7 and 55.8 feet respectively.
66 - 79	Gabbro
79 - 89	Diorite Dyke
89 - 101	Gabbro; $5\frac{1}{2}$ inch quartz vein with visible gold at 89.2
101 - 148.6	Gabbro Porphyry with few quartz veinlets; veinlets increase at 125 feet; $2\frac{1}{2}$ inch quartz vein at 141.7 feet.
148.6 - 148.9	Diorite Dyke
148.9 - 160.6	Gabbro with numerous quartz veinlets
160.6 - 166.4	Altered Gabbro with granite texture.
166.4 - 175	Gabbro

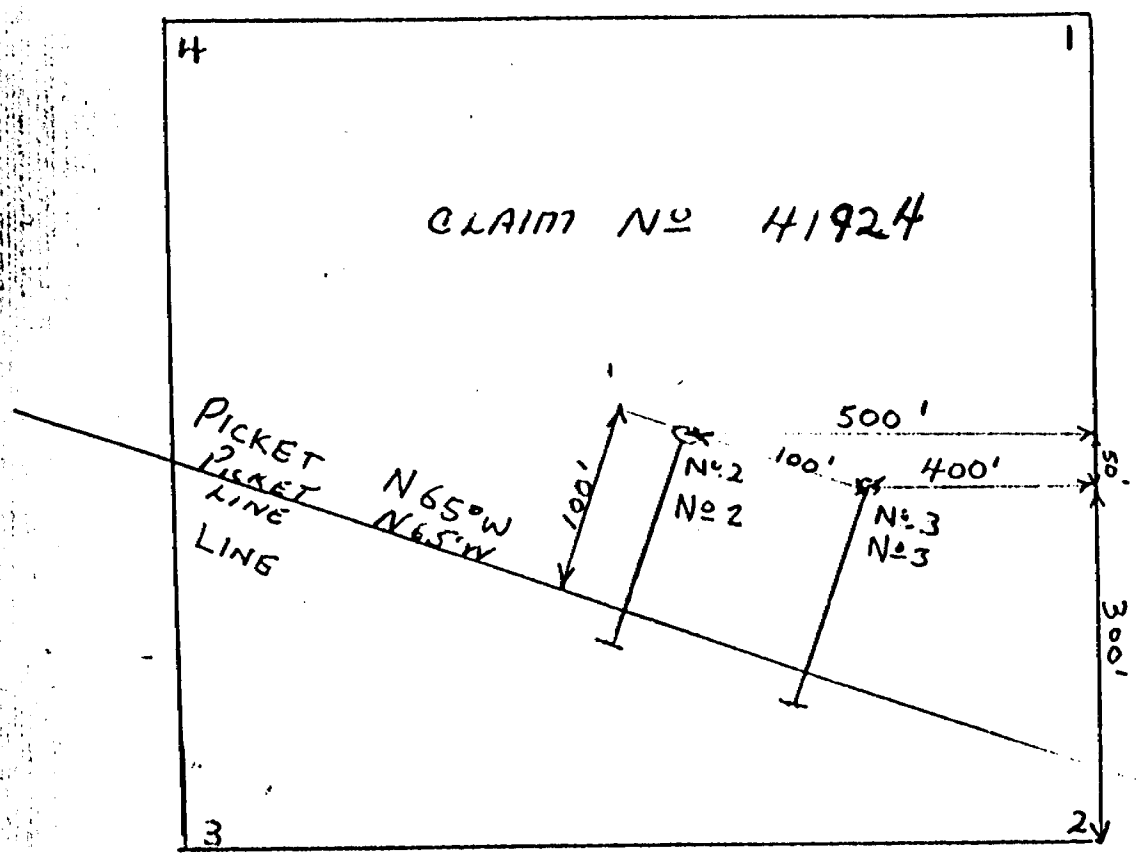


*G. W. Fancy*

G.W. FANCY BASO

LOCATION OF DRILL HOLES 2 & 3

KENLEW MINES LTD.  
 McVILAR LAKE  
 DISTRICT OF PATRICIA



HOLE NO 2

S 25° W

45°

150 feet  
 150 FEET

HOLE NO 3

BEARING

S 25° W S 25° W

ANGLE

4.5°

DISTANCE

175'



LOG OF DIAMOND DRILL HOLE NO. 5

LOCATION

50 feet East and 75 feet North of Post No. 3  
Claim KRL 41754.

KENLEW MINES LTD  
MOVICAR LAKE  
DISTRICT OF PATRICIA, ONTARIO

LOGGED BY:

G. W. FANCOY

BEARING

South 45 degrees West

ANGLE

45 degrees at collar

DATE COMPLETED

June 28, 1959

FOOTAGE

DESCRIPTION

0 - 70	Casing
70 - 96.7	Blocky - Amphibolite with minor amounts of Pyrite and slightly magnetic banded Iron formation
96.7 - 111.8	Gabbro Porphyry; 3½ inch quartz vein well mineralized with sulphides at contact
111.8 - 184.8	Gabbro with slightly magnetic banded Iron formation. Several veinlets of Chalcopyrite and Pyrite from 142.2 to 150 feet and at 164.2 feet
184.8 - 200	Slight porphyritic texture in Gabbro. Increase in quartz veinlets.
200 - 247	Gabbro
247 - 248	Dyke with Granite texture
248 - 250	Gabbro
250 - 291	Greenstone - heavy sulphide mineralization in fractures from 269.8 to 270 feet.
291 - 318	Gabbro Porphyry
318 - 325	Greenstone

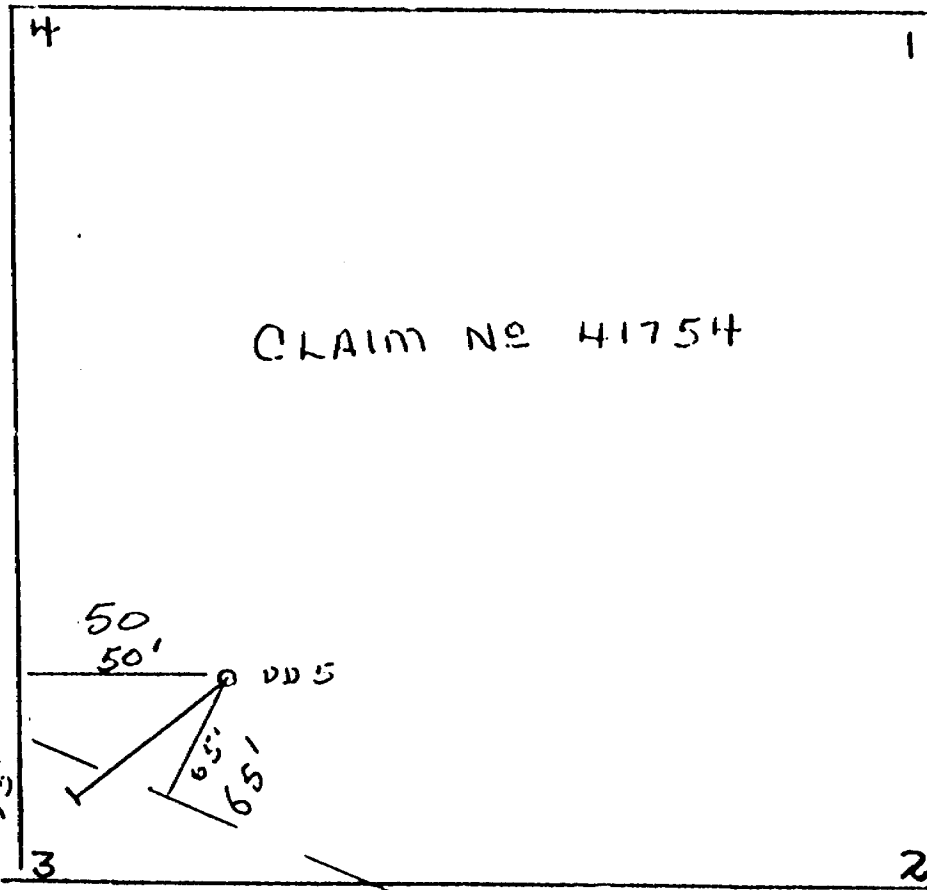


*G. W. Fancoy*  
G. W. FANCOY BASO



LOCATION OF DRILL HOLE N<sup>o</sup> 5

LOCATION OF DRILL HOLE N<sup>o</sup> 5



PICKET LINE  
N 65° W  
PICKET LINE  
N 65° W

BEARING S 45° W  
DISTANCE 325'  
ANGLE 45°

LOG OF DIAMOND DRILL HOLE NO. 6

LOCATION

100 feet North and 50 feet West of Post No. 2  
Claim KRL 41729.

KENLEW MINES LTD  
MOVICAR LAKE  
DISTRICT OF PATRICIA, ONTARIO

LOGGED BY

G. W. FANCY

BEARING

North 4 degrees East.

ANGLE

45 degrees at collar

DATE COMPLETED

June 30, 1959

FOOTAGE

DESCRIPTION

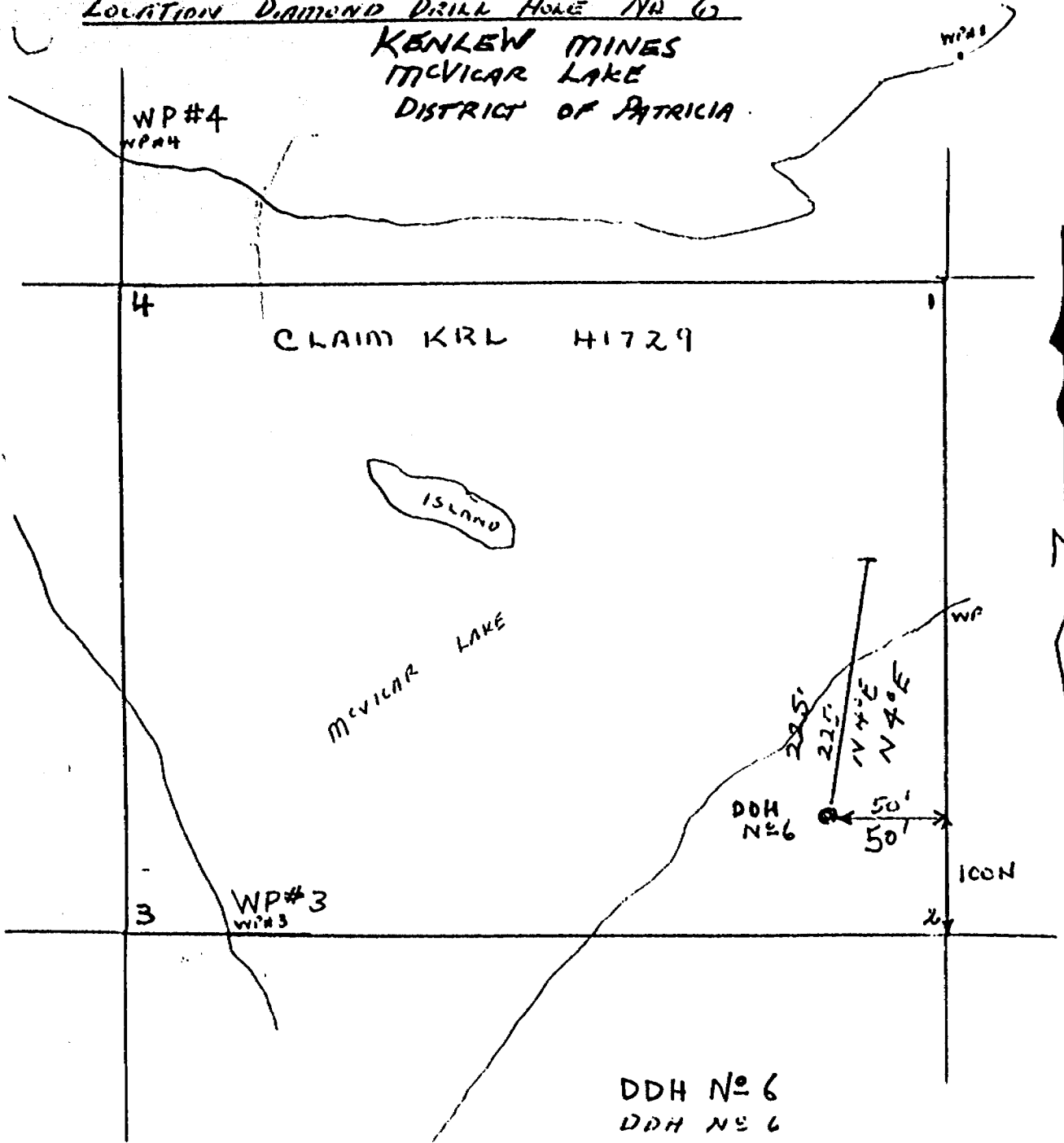
0 - 9.5	Casing
9.5 - 52	Gabbro; 3 inch Quartz vein with Pyrite at 9.5 feet, 0.1 foot barren quartz vein at 14.5 feet and 1 inch quartz vein with Pyrite and chalcopyrite at 40.2 feet.
52 - 74.2	Gabbro with Gabbro-Diorite Dyke inclusions.
74.2 - 93	Gabbro; 2 inch barren quartz veins at 86.8 and 88.4 feet.
93 - 94	Gabbro-Diorite Dyke
94 - 100	Gabbro with 4 inch Gabbro-Diorite inclusion at 94.5 and 1 foot inclusion at 98 feet; 0.7 foot quartz vein and 1.0 quartz vein at 93.1 and 98.3 feet respectively.
100 - 125	Gabbro with numerous quartz veinlets and 0.2 foot, 0.1 foot and 0.5 foot quartz veins at 106 feet, 108 feet and 120.5 feet respectively.
125 - 150	Gabbro with numerous quartz veinlets. Impure rose colored quartz with wall rock inclusions and granite texture in certain sections; 0.7 foot Quartz Vein at 145.8 feet.
150 - 170	Gabbro with 0.4 foot quartz veins at 155 feet and 160 feet.
170 - 173.3	Gabbro well mineralized with Pyrite and chalcopyrite; 4 inch quartz vein at 170.9 feet.
173 - 198	Quartz - Feldspar Porphyry.
198 - 225	Gabbro.



*G. W. Fancy*  
G. W. FANCY BASO

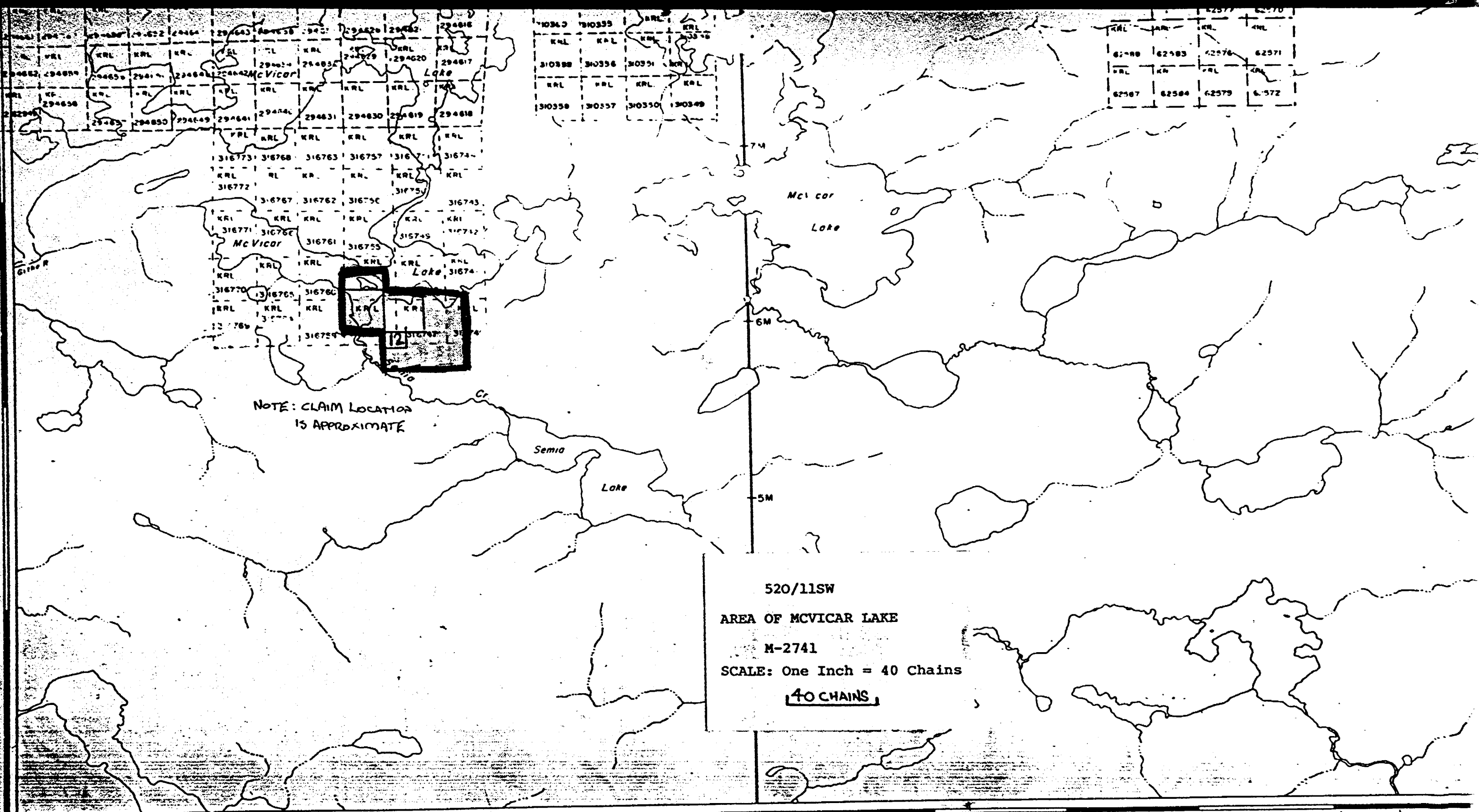
LOCATION DIAMOND DRILL HOLE NO 6

KENLEW MINES  
MCVICAR LAKE  
DISTRICT OF PATRICIA



DDH NO 6  
DDH NO 6  
BEARING N 45° E BEARING N 40° E  
DISTANCE 225' DISTANCE 225'  
ANGLE 45° ANGLE 45°  
LOCATION: 100' NORTH & 50' WEST  
OF POST 2, KRL 41729.





91° 30' 29' 28' 27' 26' 25' 24' 23' 22' 21' 20'

MCVICAR LAKE

MEEN LAKE, (M. 2239)