



52P04NE0500 19 ACHAPI LAKE

010

DIAMOND DRILLING

AREA: ACHAPI LAKE

REPORT NO: 19

WORK PERFORMED FOR: Northern Dynasty Explorations Ltd.

RECORDED HOLDER: Same as Above [xx]  
: Other [ ]

<u>Claim No.</u>	<u>Hole No.</u>	<u>Footage</u>	<u>Date</u>	<u>Note</u>
Pa 816708	M-88-7	261.8m	Sept/88	(1)(2)
Pa 816709	M-88-8	237.7m	Sept/88	(1)(2)

NOTES: (1) W8903.069, date filed April/89  
(2) comparable to OMEP submission  
OM88-2-C-062  
Jun/91

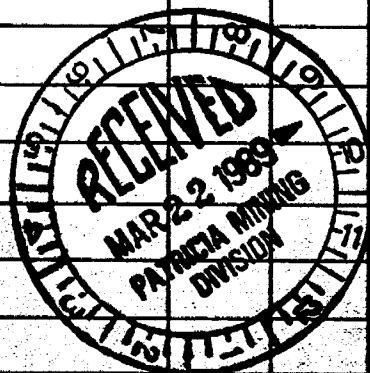
# Diamond Drill Record

CELLAR		HOLE SURVEY		
NORTH	3+85 N	FOOTAGE	AZIMUTH	DIP
EAST	2430 E	0.0m	175°	-5°
ELEVATION	-	60.7	-	-51°
LOGGED BY	G. GORZYNSKI	121.6	-	-48°
DATE LOGGED	SEPT 25-28, 1988	182.6	-	-48°
MAP REFERENCE NO.	NTS 52 P/4	243.5	-	-42°
		METHOD: Acid		

COMPANY NAME: NORTHERN DYNASTY EXPLORATIONS LTD  
 PROPERTY NAME: MISHENKOW RIVER PROPERTY  
 DRILLING CONTRACTOR: LANGLEY DRILLING / BRAMPTON, ONT.  
 ASSAYER: ACME ANALYTICAL LABS / VANCOUVER, B.C.  
 PURPOSE OF HOLE: 1/2 To TEST EASTWARD EXTENSION OF  
MIGRATION ENCOUNTERED IN IDH-M-88-5.

HOLE NO.	<u>M-88-7</u>
CLAIM NAME	<u>Pa. B16708</u>
COMMENCED	<u>SEPT 22, 1988</u>
FINISHED	<u>SEPT 25, 1988</u>
PROJECT NO.	<u>MIS</u>

FROM (m)	TO (m)	RECOVY %	DESCRIPTION	SAMPLE				ASSAYS					
				FROM	TO	WIDTH	NO.	Au					
			<u>SUMMARY LOG</u>										
0.0	1.4		CASING										
1.4	125.1		GABBRO										
125.1	140.6		GREYWACKE (?)										
140.6	141.7		MAGNETITE IRON FORMATION										
141.7	142.5		CHLORITE SCHIST										
142.5	161.2		QUARTZ-SERICITE SCHIST										
161.2	162.4		GRUNERITE IRON FORMATION										
162.4	163.3		QUARTZ-SERICITE SCHIST										
163.3	164.0		MAGNETITE IRON FORMATION										
164.0	165.9		CHLORITE-PYRITE-MAGNETITE IRON FORMATION										
165.9	166.4		GRUNERITE IRON FORMATION										
166.4	195.3		QUARTZ-SERICITE SCHIST										
195.3	196.9		METACHERT + IRON FORMATION										
196.9	198.1		SERICITE-CHLORITE SCHIST										
198.1	200.4		SERICITE-QUARTZ EYE SCHIST										
200.4	201.6		PYRITE IRON FORMATION										
201.6	206.8		SERICITE-QUARTZ EYE SCHIST										
206.8	209.4		PYRITE IRON FORMATION										
209.4	210.5		SERICITE-QUARTZ EYE SCHIST										



ONTARIO GEOLOGICAL SURVEY  
 ASSESSMENT FILES  
 OFFICE  
 MAR 30 1989  
 RECEIVED







# Diamond Drill Record

COLLAR		HOLE SURVEY		
NORTH		FOOTAGE	AZIMUTH	DIP
EAST				
ELEVATION				
LOGGED BY	G. GORZYLSKI			
DATE LOGGED				
MAP REFERENCE NO.	NTS 52 P/4	METHOD:		

COMPANY NAME NORTHERN DYNASTY EXPLORATIONS LTD  
 PROPERTY NAME MISCHKOW RIVER PROPERTY  
 DRILLING CONTRACTOR LANGLEY DRILLING/BRAMPTON, ONT.  
 ASSAYER ACME ANALYTICAL LABS/VANCOUVER, B.C.  
 PURPOSE OF HOLE \_\_\_\_\_

HOLE NO. <u>M-38-7</u>
CLAIM NAME _____
COMMENCED _____
FINISHED _____
PROJECT NO. <u>MIS</u>

FROM (m)	TO (m)	RECOVY %	DESCRIPTION	SAMPLE				ASSAYS					
				FROM (m)	TO (m)	WIDTH (m)	NO.	Au					
			- 1-2% QUARTZ ± WHITE CARBONATE VEINS (≤ 20 cm WIDE)										
140.6	141.7		MAGNETITE IRON FORMATION: TYPICALLY 40% WISPY BANDS (≤ 1 cm WIDE) OF MASSIVE MAGNETITE INTERCALATED WITH DARK TO MED. GREY SILICEOUS FINE GRAINED BANDS; LOCALLY CALCAREOUS (≤ 1% DISS. WHITE CARBONATE); FOLIATION PARALLEL TO BANDING AT 65° TO C.A.; DOWNHOLE CONTACT GRADATIONAL OVER 1 cm; ALTERATION: 140.6-141.4m: NIL 141.4-141.7m: MAGNETITE LARGELY ALTERED TO PYRROTITE AND GRONERITE; MINERALIZATION: 140.6-141.4m: MAGNETITE: 40% 141.4-141.7m: PYRROTITE: 15% GRONERITE: 20% MAGNETITE: 5%	140.6	141.4	0.8	3559	7					
				141.4	141.7	0.3	3560	132					
141.7	142.5		CHLORITE SCHIST: MED. TO DARK GREEN; HOMOGENEOUS; PREDOMINANTLY MASSIVE CHLORITE; NON-MAGNETIC; NONCALCAREOUS BUT HOSTS 10% WHITE CARBONATE VEINLETS AND BAGGED LENSES; MOD. FOLIATED AT 65° TO C.A.;	141.7	142.5	0.8	3561	166					



# Diamond Drill Record

COLLAR		HOLE SURVEY		
WORD		FOOTAGE	AZIMUTH	DIP
EAST				
ELEVATION				
LOGGED BY	G. GORZYNSKI			
DATE LOGGED				
MAP REFERENCE NO.	HTS 52 P/4	METHOD		

COMPANY NAME: NORTHERN DYNASTY EXPLORATIONS LTD  
 PROPERTY NAME: MISHKOW RIVER PROPERTY  
 DRILLING CONTRACTOR: LANGLEY DRILLING/BRAMPTON, ONT.  
 ASSAYER: ACME ANALYTICAL LABS/VANCOUVER, B.C.  
 PURPOSE OF HOLE: \_\_\_\_\_

HOLE NO.	M-88-7
CLAIM NAME	_____
COMMENCED	_____
FINISHED	_____
PROJECT NO.	MIS

FROM (m)	TO (m)	RECOVERY %	DESCRIPTION	SAMPLE				ASSAYS				
				FROM (m)	TO (m)	WIDTH (m)	NO.	Au				
161.2	162.4		GRUNERITE IRON FORMATION: RAGGED, PALE GREEN GRUNERITE BANDS (≤ 1cm WIDE) INTERCALATED WITH LIGHT GREY TO WHITE FINE GRAINED QUARTZ BANDS; NON-CALCAREOUS; LOCALLY MAGNETIC (MAGNETITE); MOD. FOLIATED/BANDED AT 45° TO C.A.; DOWNHOLE CONTACT GRADATIONAL OVER 5cm; 161.7-162.0m: LIGHT BIEGE QUARTZ-SERICITE SCHIST AS 142.5-161.2m; ALTERATION: - GRUNERITE PROBABLY REPLACES MAGNETITE MINERALIZATION: GRUNERITE - 35% MAGNETITE - 4% - IN GRUNERITE BANDS	161.2	162.4	1.2	3569	320				
162.4	163.3		QUARTZ-SERICITE SCHIST: SIMILAR TO 142.5-161.2m; WELL FOLIATED AT 55° TO C.A.; 5% WHITE AND BLUE QUARTZ EYES; DOWNHOLE CONTACT GRADATIONAL OVER 3cm; ALTERATION: PROBABLY A SERICITIC AND SILICIC ALTERATION ZONE. MINERALIZATION: NIL	162.4	163.3	0.9	3570	165				



# Diamond Drill Record

COLLAR:		HOLE SURVEY:		
NORTH		FOOTAGE	AZIMUTH	DIP
EAST				
ELEVATION				
LOGGED BY	G. GORYNSKI			
DATE LOGGED				
MAP REFERENCE NO.	HTS 52 P/4	METHOD:		

COMPANY NAME NORTHERN DYNASTY EXPLORATIONS LTD  
 PROPERTY NAME MISEHKOW RIVER PROPERTY  
 DRILLING CONTRACTOR LANGLEY DRILLING, BRAMPTON, ONT.  
 ASSAYER ACME ANALYTICAL LABS, VANCOUVER, B.C.  
 PURPOSE OF HOLE \_\_\_\_\_

HOLE NO.	<u>M-88-7</u>
CLAIM NAME	_____
COMMENCED	_____
FINISHED	_____
PROJECT NO.	<u>MIS</u>

FROM (m)	TO (m)	RECOVY %	DESCRIPTION	SAMPLE				ASSAYS				
				FROM m	TO m	WIDTH m	NO.	Au				
163.3	164.0		MAGNETITE IRON FORMATION: SIMILAR TO 140.6-141.7m; 35% MASSIVE MAGNETITE BANDS (≤ 5mm WIDE) INTERCALATED WITH LIGHT GREY TO LIGHT GREEN-GREY (≤ 10% CHLORITE-BEARING) FINE GRAINED QUARTZ; NON-CALCAREOUS; MOD. FOLIATED AND BANDED AT 60° TO C.A.; DOWNHOLE CONTACT GRADATIONAL OVER 10cm; ALTERATION: NIL MINERALIZATION: MAGNETITE - 35% PYRITE: 4% - DISS; (LOCALLY 2-3%)	163.3	164.0	0.7	3571	ppb				
164.0	165.9		CHLORITE-PYRITE-MAGNETITE IRON FORMATION: 15% CHLORITE AS RAGGED BANDS AND DISS IN A LIGHT GREY TO WHITE QUARTZ MATRIX; COMMON DISCRETE BLACK BANDS (≤ 1cm WIDE) OF MAGNETITE (PLANAR AND KINKED) AND UBIQUITOUS COARSE DISS. PYRITE; LOCAL DISS WHITE CARBONATE (≤ 1%); PARTLY TO WELL FOLIATED/BANDED AT 55° TO C.A.; DOWNHOLE CONTACT GRADATIONAL OVER 2cm;	164.0	165.9	1.9	3572	710				





# Diamond Drill Record

COLLAR:		HOLE SURVEY		
NORTH _____		FOOTAGE	AZIMUTH	DIP
EAST _____				
ELEVATION _____				
LOGGED BY <u>G. GORZYNSKI</u>				
DATE LOGGED _____				
MAP REFERENCE NO. <u>NTS 52 P/4</u>		METHOD: _____		

COMPANY NAME: NORTHERN DYNASTY EXPLORATIONS LTD  
 PROPERTY NAME: MISENKOW RIVER PROPERTY  
 DRILLING CONTRACTOR: LANGLEY DRILLING/BRAMPTON, ONT.  
 ASSAYER: ACME ANALYTICAL LABS/VANCOUVER, B.C.  
 PURPOSE OF HOLE: \_\_\_\_\_

HOLE NO. M-88-7  
 CLAIM NAME \_\_\_\_\_  
 COMMENCED \_\_\_\_\_  
 FINISHED \_\_\_\_\_  
 PROJECT NO. MIS

FROM (m)	TO (m)	RECOVY %	DESCRIPTION	SAMPLE				ASSAYS						
				FROM	TO	WIDTH	NO.	Au	Au					
								ppb	oz/t = ppb					
195.3	196.9		METACHERT + IRON FORMATION: HIGHLY VARIABLE UNIT WITH LOCAL SULPHIDES, LOCAL MAGNETITE & LOCAL GRUNERITE IN LIGHT GREY QUARTZ MATRIX; NON-CALCAREOUS; WELL FOLIATED AT 60° TO C.A.; DOWN HOLE CONTACT SHARP AND PARALLEL TO FOLIATION; 196.1-196.4m: QUARTZ-SERICITE SCHIST; ALTERATION: - GRUNERITE PROBABLY BETTER MAGNETITE - MINOR CHROMIUM MICA ASSOCIATED WITH QUARTZ-SERICITE SCHIST. MINERALIZATION: PYRITE: GENERALLY 51%; 196.4-196.9: 61% - DISS (LOCALLY 10%); CHALCOPYRITE: 51% OVER SHARP (10m) SECTIONS - ASSOCIATED WITH PYRITE PYRRHOTITE - TRACE GRUNERITE: 195.7-196.1m: 20% - RAGGED BANDS MAGNETITE: 195.3-195.4m: 25% - LAMINATED	195.3	196.9	1.6	3586	1195	0.032	1097				

# Diamond Drill Record

COLLAR:		HOLE SURVEY		
NORTH	EAST	FOOTAGE	AZIMUTH	DIP
ELEVATION				
LOGGED BY <u>G. GORZYNSKI</u>				
DATE LOGGED				
MAP REFERENCE NO. <u>NTS 52 P/4</u>		METHOD:		

COMPANY NAME NORTHERN DYNASTY EXPLORATIONS LTD  
 PROPERTY NAME MISEHKOW RIVER PROPERTY  
 DRILLING CONTRACTOR LANGLEY DRILLING/BRAMPTON, ONT.  
 ASSAYER ACME ANALYTICAL LABS/VANCOUVER, B.C.  
 PURPOSE OF HOLE \_\_\_\_\_

HOLE NO. M-88-7  
 CLAIM NAME \_\_\_\_\_  
 COMMENCED \_\_\_\_\_  
 FINISHED \_\_\_\_\_  
 PROJECT NO. MIS

FROM (m)	TO (m)	RECOVY %	DESCRIPTION	SAMPLE				ASSAYS					
				FROM m	TO m	WIDTH m	NO.	Au	ppb				
196.9	198.1		SERICITE-CHLORITE SCHIST: LIGHT GREY TO MED GREEN, DIFUSELY BANDED (≤ 2cm wide); HOMOGENEOUS; NON-CALCAREOUS; LOCALLY MAGNETIC (PYRROHITIC); WELL FOLIATED AT 55° TO C.A.; DOWNHOLE CONTACT GRADATIONAL OVER 2cm; ALTERATION: A PARTIALLY SERICITIZED CHLORITE SCHIST? MINERALIZATION: PYRROHITIC < 1% DISS PYRITE/CHALCOPYRITE: TRACE-ASSOCIATED WITH PYRROHITIC;	196.9	198.1	1.2	3587		19				
198.1	200.4		SERICITE-QUARTZ FINE SCHIST: LIGHT GREY, HOMOGENEOUS, ABUNDANT SERICITE IN MOD. SILICEOUS MATRIX; 1-7% DISS BLUE QUARTZ EYES (1-2mm DIA); NON-CALCAREOUS; NON-MAGNETIC; WELL FOLIATED AT 55° TO C.A.; DOWNHOLE CONTACT SHARP AT 35° TO C.A. PARALLEL TO FOLIATION; ALTERATION: PROBABLY A SERICITIC AND SILICIC ALTERATION ZONE MINERALIZATION: PYRITE: < 1% - DISS CHALCOPYRITE: TRACE - DISS	198.1	200.4	2.3	3588		89				

# Diamond Drill Record

COLLAR:		HOLE SURVEY		
NORTH		FOOTAGE	AZIMUTH	DIP
EAST				
ELEVATION				
LOGGED BY	G. GORTYNSKI			
DATE LOGGED				
MAP REFERENCE	NO. HTS 52 P/A	METHOD:		

COMPANY NAME NORTHERN DYNASTY EXPLORATIONS LTD  
 PROPERTY NAME MISENKOW RIVER PROPERTY  
 DRILLING CONTRACTOR LANGLEY DRILLING/BRAMPTON, ONT.  
 ASSAYER ACME ANALYTICAL LABS/VANCOUVER, B.C.  
 PURPOSE OF HOLE \_\_\_\_\_

HOLE NO.	<u>M-88-7</u>
CLAIM NAME	_____
COMMENCED	_____
FINISHED	_____
PROJECT NO.	<u>MIS</u>

FROM (m)	TO (m)	RECOVERY %	DESCRIPTION	SAMPLE				ASSAYS	
				FROM m	TO m	WIDTH m	NO.	Au	Au REASSAY oz/t = ppb
200.4	201.6		PYRITE IRON FORMATION: VERY REGGED BANDS, WISPS AND DISS. OF PYRITE IN A LIGHT GREY QUARTZ MATRIX; NON-CALCAREOUS; NON-MAGNETIC; FOLIATED AT 50° TO C.A.; DOWNHOLE CONTACT HIGHLY GRADATIONAL ALTERATION: NIL? MINERALIZATION: PYRITE: 20% - TYPICALLY FINE GRAINED CHALCOPYRITE: < 1% - DISS. AND CLOTS	200.4	201.6	1.2	3589	4325	0.120 4114
201.6	206.8		SERICITE-QUARTZ EYE SCHIST: SIMILAR TO 198.1-200.4m; MED. GREY UPHOLE TO LIGHT BROWN DOWNHOLE; 1-7% BLUE QUARTZ EYES; NON-CALCAREOUS; NON-MAGNETIC; WELL FOLIATED AT 50° TO C.A.; DOWNHOLE CONTACT SHARP AT 30° TO C.A. PARALLEL TO FOLIATION; ALTERATION: A SERICITIC AND SILICIC ALTERATION ZONE MINERALIZATION: 201.6-202.5m: PYRROTHITE - 1% - DISS AND CLOTS PYRITE/CHALCOPYRITE: << 1% 202.5-206.8m: NIL?	201.6	202.5	0.9	3550	11	
				202.5	204.8	2.3	3551	45	
				204.8	206.8	2.0	3557	2	



# Diamond Drill Record

COLLAR:		HOLE SURVEY		
NORTH _____	FOOTAGE	AZIMUTH	DIP	
EAST _____				
ELEVATION _____				
LOGGED BY <u>G. GORTYNSKI</u>				
DATE LOGGED _____				
MAP REFERENCE NO. <u>HTS 52 P/4</u>	METHOD: _____			

COMPANY NAME NORTHERN DYNASTY EXPLORATIONS LTD  
 PROPERTY NAME MISHKOW RIVER PROPERTY  
 DRILLING CONTRACTOR LANGLEY DRILLING / BRAMPTON, ONT.  
 ASSAYER ACME ANALYTICAL LABS / VANCOUVER, B.C.  
 PURPOSE OF HOLE \_\_\_\_\_

HOLE NO. <u>M-88-7</u>
CLAIM NAME _____
COMMENCED _____
FINISHED _____
PROJECT NO. <u>MIS</u>

FROM (m)	TO (m)	RECOVY %	DESCRIPTION	SAMPLE				ASSAYS				
				FROM m	TO m	WIDTH m	NO.	Au				
210.5	211.9		METACHERT: LIGHT GREY, MASSIVE QUARTZ WITH 15% INTERCALATED QUARTZ-SERICITE SCHIST BANDS (≤ 10 cm WIDE) AND 1% FRAGGED GRONERITE BANDS (≤ 3 mm WIDE); NON-CALCAREOUS; NON-MAGNETIC; FOLIATION/BANDING AT 45° TO C.A.; DOWNHOLE CONTACT SHARP AT 45° TO C.A. PARALLEL TO FOLIATION; ALTERATION - GRONERITE PROBABLY AFTER MAGNETIC - SERICITIC SECTIONS PROBABLY ALTERATION PRODUCTS MINERALIZATION: GRONERITE - 1% (LOCALLY 3%) PYRITE: 1% - DISS (LOCALLY 4%)	210.5	211.9	1.4	3596	685				
211.9	212.4		SERICITE-QUARTZ EYE SCHIST: SIMILAR TO 198.1-200.4m; WELL FOLIATED AT 40° TO C.A.; DOWNHOLE CONTACT GRADATIONAL OVER 3 cm; ALTERATION: PROBABLY A SERICITIC AND SILICIC ALTERATION ZONE MINERALIZATION: PYRITE: < 1% - DISS ARSENOPYRITE: TRACE - IN MINOR QUARTZ VEINLETS	211.9	212.4	0.5	3597	19				



# Diamond Drill Record

<b>COLLAR:</b>		<b>HOLE SURVEY:</b>		
NORTH _____		FOOTAGE	AZIMUTH	DIP
EAST _____				
ELEVATION _____				
LOGGED BY <u>G. GORZYNSKI</u>				
DATE LOGGED _____				
MAP REFERENCE NO. <u>NTS 52 P/4</u>		METHOD: _____		

COMPANY NAME NORTHERN DYNASTY EXPLORATIONS LTD  
 PROPERTY NAME MISEHKOW RIVER PROPERTY  
 DRILLING CONTRACTOR LANGLEY DRILLING/BRAMPTON, ONT.  
 ASSAYER ACME ANALYTICAL LABS/VANCOUVER, B.C.  
 PURPOSE OF HOLE \_\_\_\_\_

HOLE NO. <u>M-88-7</u>
CLAIM NAME _____
COMMENCED _____
FINISHED _____
PROJECT NO. <u>MIS</u>

FROM (m)	TO (m)	RECOVY %	DESCRIPTION	SAMPLE				ASSAYS	
				FROM (m)	TO (m)	WIDTH (m)	NO.	Au ppb	Au REASSAY oz/t = ppb
212.4	213.4		METACHERT: SIMILAR TO 210.5-211.9m; 30% SERICITE - QUARTZ EYE SCHIST INTERBANDS (≤ 5cm WIDE) - SIMILAR TO 198.1-200.4m; FOLIATION IN SCHIST AT 50° TO C.A.; DOWNHOLE CONTACT GRADATIONAL OVER 10cm; ALTERATION: SCHIST INTERVALS ARE PROBABLY SERICITIC AND SILICIC ALTERATION PRODUCTS MINERALIZATION: PYRITE: ≤ 1% - DISS	212.4	213.4	1.0	3598	136	
213.4	216.6		PYRITE IRON FORMATION: CLOTS, DISS, AND CRUDE BANDS OF PYRITE IN LIGHT GREY QUARTZ (METACHERT) MATRIX; 25% INTERBANDDED CHLORITE ± SERICITE SCHIST; LOCAL GRUNERITE INTERBANDS; NON-CALCAREOUS; NON-MAGNETIC; FOLIATION/BANDING AT 50° TO C.A.; DOWNHOLE CONTACT SHARP AT 20° TO C.A. PARALLEL TO FOLIATION; ALTERATION: GRUNERITE PROBABLY DERIVED FROM MAGNETITE MINERALIZATION: 213.4-214.8m: PYRITE - 7%, ARSENOPYRITE - << 1% - DISS, CHALCOPYRITE: << 1% - DISS; 214.8-216.6m: PYRITE - 4%, PYRRHOTITE: << 1%, GRUNERITE: 4% (LOCAL 25%).	213.4	214.8	1.4	3599	2835	0.105 3600
				214.8	216.6	1.8	3600	6415	0.201 6891

# Diamond Drill Record

<b>COLLAR:</b>		<b>HOLE SURVEY</b>		
NORTH _____	EAST _____	FOOTAGE	AZIMUTH	DIP
ELEVATION _____	LOGGED BY <u>G. GORZYNSKI</u>			
DATE LOGGED _____	MAP REFERENCE NO. <u>HTS 52 P/A</u>	METHOD: _____		

COMPANY NAME NORTHERN DYNASTY EXPLORATIONS LTD  
 PROPERTY NAME MISENKOW RIVER PROPERTY  
 DRILLING CONTRACTOR LANGLEY DRILLING/BRAMPTON, ONT.  
 ASSAYER ACME ANALYTICAL LABS/VANCOUVER, B.C.  
 PURPOSE OF HOLE \_\_\_\_\_

HOLE NO. <u>M-88-7</u>
CLAIM NAME _____
COMMENCED _____
FINISHED _____
PROJECT NO. <u>MIS</u>

FROM (m)	TO (m)	RECOVY %	DESCRIPTION	SAMPLE				ASSAYS		
				FROM (m)	TO (m)	WIDTH (m)	NO.	Au ppb	Au REASSAY oz/t = ppb	
216.6	222.6		CHLORITE SCHIST AND METACHERT: MED. GREEN, HOMOGENEOUS	216.6	217.7	1.1	3601	1215	0.031	1063
			CHLORITE SCHIST (LOCALLY GRADING TO BASALT) WITH	217.7	219.6	1.9	3602	1575	0.080	2743
			70% INTERCALATED BANDS (≤15cm WIDE) OF MASSIVE	219.6	222.6	3.0	3603	695	0.016	549
			LIGHT GREY QUARTZ (METACHERT); METACHERTS FREQUENTLY							
			HOST PYRITE (≤1%) AND LOCALLY HOST GRUNERITE ±							
			MAGNETITE; NON-CALCAREOUS; TYPICALLY WELL-FOLIATED							
			AT 40° TO C.A.; DOWNHOLE CONTACT GRADATIONAL OVER							
			40cm;							
			ALTERATION: - GRUNERITE AFTER MAGNETITE							
			- LOCAL BLEACHING							
			MINERALIZATION: 216.6-217.7m: PYRITE: 2%							
			217.7-219.6m: PYRITE: 4% - DISS AND CLOTS IN BOTH							
			METACHERT AND CHLORITE SCHIST							
			ARSENOPYRITE: TRACE; CLOTS							
			219.6-222.6m: PYRITE: <1% (LOCALLY 2%)							
			ARSENOPYRITE: <<1% - DISS							



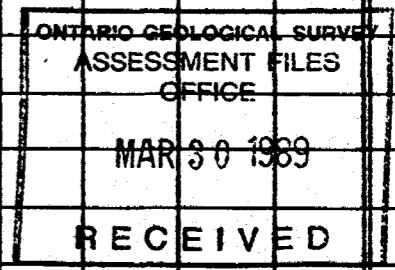
# Diamond Drill Record

COLLAR:		HOLE SURVEY		
NORTH	3+15N	FOOTAGE	AZIMUTH	DIP
EAST	4+07E	0.0m	175°	-40°
ELEVATION	-	62.7	-	-45°
LOGGED BY	G. GORTYNSKI	121.6	-	-44°
DATE LOGGED	SEPT. 29-30, 1988	182.6	-	-43°
MAP REFERENCE NO.	NTS 52 P/4	237.7	-	-44°
		METHOD: Acid		

COMPANY NAME NORTHERN DYNASTY EXPLORATIONS LTD  
 PROPERTY NAME MISEHKOW RIVER PROPERTY  
 DRILLING CONTRACTOR LANGLEY DRILLING / BRAMPTON, ONT.  
 ASSAYER ACME ANALYTICAL LABS / VANCOUVER, B.C.  
 PURPOSE OF HOLE 1/2 To TEST EASTWARD EXTENSION OF MINERALIZATION ENCOUNTERED IN DDH-M-88-5

HOLE NO.	M-88-8
CLAIM NAME	Pa. 816709
COMMENCED	SEPT. 25, 1988
FINISHED	SEPT. 28, 1988
PROJECT NO.	MIS

FROM (m)	TO (m)	RECOVY %	DESCRIPTION	SAMPLE				ASSAYS					
				FROM	TO	WIDTH	NO.	Au					
0.0	4.6		CASING										
4.6	6.0		SERICITE-QUARTZ EYE SCHIST										
6.0	7.0		GREYWACKE										
7.0	63.1		SERICITE-QUARTZ EYE SCHIST										
63.1	64.6		SERICITE-CARBONATE SCHIST										
64.6	65.3		CHLORITE-GRUNERITE IRON FORMATION										
65.3	70.2		SERICITE-CARBONATE-CHLORITE SCHIST										
70.2	79.5		SERICITE-CARBONATE SCHIST										
79.5	82.7		SERICITE SCHIST AND QUARTZ VEINS										
82.7	84.1		PYRITE-MAGNETITE IRON FORMATION										
84.1	85.6		SERICITE SCHIST										
85.6	88.4		MAGNETITE IRON FORMATION										
88.4	90.7		PYRITE IRON FORMATION										
90.7	937.7		BASALT										
	237.7		END OF HOLE										



# Diamond Drill Record

COLLAR:		HOLE SURVEY		
		FOOTAGE	AZIMUTH	DIP
NORTH _____				
EAST _____				
ELEVATION _____				
LOGGED BY <u>G. Gorzynski</u>				
DATE LOGGED _____				
MAP REFERENCE NO. <u>NTS 52 P/4</u>		METHOD:		

COMPANY NAME NORTHERN DYNASTY EXPLORATIONS LTD  
 PROPERTY NAME MISEHKOW RIVER PROPERTY  
 DRILLING CONTRACTOR LANGLEY DRILLING / BRAMPTON, ONT.  
 ASSAYER ACME ANALYTICAL LABS / VANCOUVER, B.C.  
 PURPOSE OF HOLE \_\_\_\_\_

HOLE NO. <u>M-88-8</u>
CLAIM NAME _____
COMMENCED _____
FINISHED _____
PROJECT NO. <u>MIS</u>

FROM (m)	TO (m)	RECOVY %	DESCRIPTION	SAMPLE				ASSAYS					
				FROM m	TO m	WIDTH m	NO.	Au					
0.0	4.6		CASING - A FEW COBBLES OF GABBRO, SERICITE-QUARTZ EYE SCHIST AND WHITE GRANITE RECOVERED.					Au					
								ppb					
4.6	6.0		SERICITE-QUARTZ EYE SCHIST: WHITE TO LIGHT GREY QUARTZ-SERICITE SCHIST WITH 1-3% BLUE AND CLEAR ROUNDED QUARTZ EYES (1-2mm DIA); NON-CALCAREOUS; NON-MAGNETIC; WELL FOLIATED AT 60° TO C.A.; DOWNHOLE CONTACT SHARP AT 60° TO C.A. PARALLEL TO FOLIATION; ALTERATION: PROBABLY A SERICITIC AND SILICIC ALTERATION ZONE; MINERALIZATION: PYRITE-TRACE-DISS.	4.6	6.0	1.4	3609	72					
6.0	7.0		GREYWACKE: MED. GREY, HOMOGENOUS, MASSIVE, LOCALLY CALCAREOUS (≤3% CALCITE); NON-MAGNETIC; MOD. FOLIATED AT 60° TO C.A.; ABUNDANT BROKEN CORE; DOWNHOLE CONTACT GRADATIONAL OVER 3cm; ALTERATION: NIL; MINERALIZATION: PYRITE-4% - DISS AND CLOTS (≤2mm DIA);	6.0	7.0	1.0	3610	49					

# Diamond Drill Record

COLLAR:		HOLE SURVEY		
		FOOTAGE	AZIMUTH	DIP
NORTH _____				
EAST _____				
ELEVATION _____				
LOGGED BY <u>G. Gorzynski</u>				
DATE LOGGED _____				
MAP REFERENCE NO. <u>NTS 52 P/A</u>		METHOD: _____		

COMPANY NAME NORTHERN DYNASTY EXPLORATIONS LTD  
 PROPERTY NAME MISEHKOW RIVER PROPERTY  
 DRILLING CONTRACTOR LANGLEY DRILLING/BRAMPTON, ONT  
 ASSAYER ACME ANALYTICAL LABS/VANCOUVER, B.C.  
 PURPOSE OF HOLE \_\_\_\_\_

HOLE NO. <u>M-88-8</u>
CLAIM NAME _____
COMMENCED _____
FINISHED _____
PROJECT NO. <u>MIS</u>

FROM (m)	TO (m)	RECOVERY %	DESCRIPTION	SAMPLE				ASSAYS				
				FROM m	TO m	WIDTH m	NO.	Au				
7.0	63.1		SERICITE - QUARTZ EYE SCHIST: SIMILAR TO 4.6-6.0m;	7.0	8.7	1.7	3611	6				
			LIGHT TO MED. GREY WITH COMMON PINK-ORANGE	8.7	10.4	1.7	3612	5				
			IRON CARBONATE STAINED SECTIONS; MOD. TO VERY	10.4	11.9	1.5	3613	3				
			SILICEOUS WITH $\leq$ 5% BLUE (AND LOCALLY CLEAR) QUARTZ	11.9	14.0	2.1	3614	2				
			EYES ( $\leq$ 3mm DIA) - 5% OF UNIT IS DEVOID OF QUARTZ EYES;	14.0	16.6	2.6	3615	1				
			NON-MAGNETIC; NON-CALCAREOUS EXCEPT FOR SOME IRON	16.6	19.6	3.0	3616	6				
			CARBONATE SECTIONS; WELL FOLIATED AT $\sim$ 60° TO C.A.	19.6	22.6	3.0	3617	7				
			THROUGHOUT; DOWNHOLE CONTACT IN 3cm SECTION OF	22.6	25.6	3.0	3618	1				
			BROKEN CORE;	25.6	28.6	3.0	3619	5				
			MOD. BROKEN CORE AT 7.0-7.3m, 11.5-11.7m (FAULT?), 18.5-18.8m,	28.6	30.2	1.6	3620	3				
			39.6-39.8m, 48.0-48.7m, 51.8-52.8m, 54.1-54.3m;	30.2	31.7	1.5	3621	4				
			58.3-58.6m: GRONRITE IRON FORMATION: 30% BANDED GRONRITE	31.7	33.7	2.0	3622	1				
			IN WHITE TO LIGHT GREY QUARTZ (METACHERT);	33.7	35.7	2.0	3623	13				
			MAGNETITE $\leq$ 1%; SULPHIDES - NIL; SHARP CONTACTS;	35.7	38.7	3.0	3624	16				
			ALTERATION: PROBABLY A SERICITIC AND SILICIC ALTERATION ZONE	38.7	39.8	1.1	3625	3				
			- $\leq$ 4% IRON CARBONATE STAIN MAINLY ON FOLIATION PLANES	39.8	42.8	3.0	3626	12				
			OVER 80% OF UNIT; 5-25% IRON CARBONATE AT 10.4-11.9m;	42.8	45.8	3.0	3627	7				
			MINERALIZATION: SULPHIDES GENERALLY NIL TO TRACE;	45.8	47.6	1.8	3628	4				
			QUARTZ VEINS: 7% @ 10.4-14.0m, 3% @ 28.6-30.7m, 35% @ 45.8-47.6m;	47.6	50.6	3.0	3629	2				

# Diamond Drill Record

COLLAR:		HOLE SURVEY		
NORTH _____	FOOTAGE	AZIMUTH	DIP	
EAST _____				
ELEVATION _____				
LOGGED BY <u>G. GORZYNSKI</u>				
DATE LOGGED _____				
MAP REFERENCE NO. <u>NTS 52 P/4</u>	METHOD: _____			

COMPANY NAME NORTHERN DYNASTY EXPLORATIONS LTD  
 PROPERTY NAME MISEHKOW RIVER PROPERTY  
 DRILLING CONTRACTOR LANGLEY DRILLING / BRAMPTON, ONT.  
 ASSAYER ACME ANALYTICAL LABS / VANCOUVER, B.C.  
 PURPOSE OF HOLE \_\_\_\_\_

HOLE NO. <u>M-88-8</u>
CLAIM NAME _____
COMMENCED _____
FINISHED _____
PROJECT NO. <u>MIS</u>

FROM (m)	TO (m)	RECOVY %	DESCRIPTION	SAMPLE				ASSAYS				
				FROM <sub>m</sub>	TO <sub>m</sub>	WIDTH <sub>m</sub>	NO.	Au				
				50.6	53.6	3.0	3630	33				
				53.6	56.6	3.0	3631	8				
				56.6	58.3	1.7	3632	39				
				58.3	58.6	0.3	3633	5				
				58.6	61.1	2.5	3634	1				
				61.1	63.1	2.0	3635	5				
63.1	64.6		SERICITE - CARBONATE SCHIST: MED. GREEN-GREY, HOMOGENOUS; 5-15% WHITE CARBONATE (DOLOMITE?) DISS. IN SOFT TO MOD. SILICEOUS, SERICITIC MATRIX; NON-MAGNETIC; MOD. TO WELL FOLIATED AT 60° TO C.A.; DOWNHOLE CONTACT SHARP AT 65° TO C.A. PARALLEL TO FOLIATION; ALTERATION: POSSIBLY A SERICITIC AND CARBONATE-RICH ALTERATION ZONE MINERALIZATION: PYRITE - <1% - DISS.	63.1	64.6	1.5	3636	2				

# Diamond Drill Record

<b>COLLAR:</b> NORTH _____ EAST _____ ELEVATION _____ LOGGED BY <u>G. GORZYNSKI</u> DATE LOGGED _____ MAP REFERENCE NO. <u>NTS 52 P/4</u>	<b>HOLE SURVEY</b>		
	FOOTAGE	AZIMUTH	DIP
METHOD: _____			

COMPANY NAME NORTHERN DYNASTY EXPLORATIONS LTD  
 PROPERTY NAME MISEHKOW RIVER PROPERTY  
 DRILLING CONTRACTOR LANGLEY DRILLING / BRAMPTON, ONT.  
 ASSAYER ACME ANALYTICAL LABS / VANCOUVER, B.C.  
 PURPOSE OF HOLE \_\_\_\_\_

HOLE NO. <u>M-88-8</u>
CLAIM NAME _____
COMMENCED _____
FINISHED _____
PROJECT NO. <u>MIS</u>

FROM (m)	TO (m)	RECOVY %	DESCRIPTION	SAMPLE				ASSAYS				
				FROM <sub>m</sub>	TO <sub>m</sub>	WIDTH <sub>m</sub>	NO.	Au				
64.6	65.3		CHLORITE-GRUNERITE IRON FORMATION. RAGGED PATCHES AND LENSES OF 15% CHLORITE AND 5% GRUNERITE IN LIGHT GREY AND LIGHT BROWN QUARTZ (METACHERT); NON-MAGNETIC; 5% WHITE CARBONATE (DISS); MOD. TO WELL FOLIATED AT 65° TO C.A.; DOWNHOLE CONTACT SHARP AT 65° TO C.A. PARALLEL TO FOLIATION; ALTERATION: GRUNERITE PROBABLY AFTER MAGNETIC MINERALIZATION: PYRITE: 5% - DISS.	64.6	65.3	0.7	3637	44				
65.3	70.2		SERICITE-CARBONATE-CHLORITE SCHIST: SIMILAR TO 63.1-64.6m BUT WITH 2-10% DISS CHLORITE DECREASING DOWNHOLE; MED. GREY-GREEN, HOMOGENOUS; MOD TO WELL FOLIATED AT 65° TO C.A.; DOWNHOLE CONTACT GRADATIONAL OVER 1m; ALTERATION: POSSIBLY A SERICITIC AND CARBONATE-RICH ALTERATION ZONE - MOD. TO VERY SILICIFIED AT 67.1-70.2m; MINERALIZATION: PYRITE: 5% - DISS.	65.3	67.1	2.8	3638	4				
				67.1	68.6	1.5	3639	2				
				68.6	70.2	1.6	3640	6				



# Diamond Drill Record

COLLAR:		HOLE SURVEY		
NORTH _____	FOOTAGE	AZIMUTH	DIP	
EAST _____				
ELEVATION _____				
LOGGED BY <u>G. GORZYNSKI</u>				
DATE LOGGED _____				
MAP REFERENCE NO. <u>NTS 52 P/4</u>	METHOD: _____			

COMPANY NAME NORTHERN DYNASTY EXPLORATIONS LTD  
 PROPERTY NAME MISEHKOW RIVER PROPERTY  
 DRILLING CONTRACTOR LANGLEY DRILLING / BRAMPTON, ONT.  
 ASSAYER ACME ANALYTICAL LABS / VANCOUVER, B.C.  
 PURPOSE OF HOLE \_\_\_\_\_

HOLE NO. <u>M-88-8</u>
CLAIM NAME _____
COMMENCED _____
FINISHED _____
PROJECT NO. <u>MIS</u>

FROM (m)	TO (m)	RECOVY %	DESCRIPTION	SAMPLE				ASSAYS	
				FROM m	TO m	WIDTH m	NO.	Au ppb	Au REASSAY oz/t = ppb
70.2	79.5		SERICITE-CARBONATE SCHIST: SIMILAR TO 63.1-64.6m; 2-10% DISS WHITE CARBONATE; POORLY TO WELL FOLIATED AT 60° TO C.A.; DOWNHOLE CONTACT GRADATIONAL OVER 5cm; ALTERATION: POSSIBLY A SERICITIC AND CARBONATE-RICH ALTERATION ZONE; MOD. TO VERY SILICEOUS THROUGHOUT; -71.8-72.1m: SEMI-MASSIVE BROWN IRON CARBONATE ENVELOPS WITH ≤1% DISS MAGNETITE AROUND A 10cm WHITE QUARTZ VEIN; MINERALIZATION: SULPHIDES GENERALLY << 1%; QUARTZ ± WHITE CARBONATE VEINS: 3% 76.8-76.9m: 3% DISS PYRITE IN HIGHLY SILICIFIED AND BRECCIATED SECTION;	70.2	71.8	1.6	3641	3	
				71.8	73.0	1.2	3642	35	
				73.0	76.0	3.0	3643	1	
				76.0	77.8	1.8	3644	23	
				77.8	79.5	1.7	3645	9	
79.5	82.7		SERICITE SCHIST AND QUARTZ VEINS: MED. GREY TO BLUE GREY, SERICITE IN QUARTZITIC MATRIX; NON-CALCAREOUS NON-MAGNETIC; SILICEOUS; WELL FOLIATED AT 40°-60° TO C.A.; DOWNHOLE CONTACT ACROSS LARGE QUARTZ VEIN; 79.5-80.0m: 20% INTERBANDDED METACHERT WITH 2% DISS. PYRITE;	79.5	80.0	0.5	3646	1140	0.030
				80.0	82.7	2.7	3647	410	1029

# Diamond Drill Record

COLLAR:		HOLE SURVEY		
		FOOTAGE	AZIMUTH	DIP
NORTH _____				
EAST _____				
ELEVATION _____				
LOGGED BY <u>G. GORZYLSKI</u>				
DATE LOGGED _____				
MAP REFERENCE NO. <u>NTS 52 P/4</u>		METHOD: _____		

COMPANY NAME NORTHERN DYNASTY EXPLORATIONS LTD  
 PROPERTY NAME MISEHKOW RIVER PROPERTY  
 DRILLING CONTRACTOR LANGLEY DRILLING / BRAMPTON, ONT.  
 ASSAYER ACME ANALYTICAL LABS / VANCOUVER, B.C.  
 PURPOSE OF HOLE \_\_\_\_\_

HOLE NO. <u>M-88-8</u>
CLAIM NAME _____
COMMENCED _____
FINISHED _____
PROJECT NO. <u>MIS</u>

FROM (m)	TO (m)	RECOVY %	DESCRIPTION	SAMPLE				ASSAYS					
				FROM <sub>m</sub>	TO <sub>m</sub>	WIDTH <sub>m</sub>	NO.	Au					
			ALTERATION: POSSIBLY A SERICITIC AND SILICIC ALTERATION ZONE; MINERALIZATION: SULPHIDES GENERALLY << 1%.										
			80.0-82.7: 60% WHITE MASSIVE QUARTZ VEINS;										
82.7	84.1		PYRITE-MAGNETITE IRON FORMATION: CRUDELY TO WELL BANDED AND DISSEMINATED INTERGROWN PYRITE AND MAGNETITE IN A LIGHT GREY QUARTZ (METACHERT) MATRIX; LOCAL INTERCALATED SERICITE SCHIST (2%) AND GRUNERITE; NON-CALCAREOUS; FOLIATION AND BANDING VARIES 10-70° TO C.P.; DOWNHOLE CONTACT ACROSS 25cm QUARTZ VEIN; ALTERATION: PYRITE AND GRUNERITE AFTER MAGNETITE? MINERALIZATION: PYRITE-10%. MAGNETITE-4%. PYRRHOTITE-1%. CHALCOPYRITE-<<1%. QUARTZ VEINS-15%-COMMON HOST TO SULPHIDES;	82.7	84.1	1.4	3648	91					

# Diamond Drill Record

COLLAR:		HOLE SURVEY		
NORTH _____		FOOTAGE	AZIMUTH	DIP
EAST _____				
ELEVATION _____				
LOGGED BY <u>G. GORTZYNSKI</u>				
DATE LOGGED _____				
MAP REFERENCE NO. <u>NTS 52 P/A</u>		METHOD: _____		

COMPANY NAME NORTHERN DYNASTY EXPLORATIONS LTD  
 PROPERTY NAME MISENKOW RIVER PROPERTY  
 DRILLING CONTRACTOR LANGLEY DRILLING / BRAMPTON, ONT.  
 ASSAYER ACME ANALYTICAL LABS / VANCOUVER, B.C.  
 PURPOSE OF HOLE \_\_\_\_\_

HOLE NO. M-88-8  
 CLAIM NAME \_\_\_\_\_  
 COMMENCED \_\_\_\_\_  
 FINISHED \_\_\_\_\_  
 PROJECT NO. MIS

FROM (m)	TO (m)	RECOVY %	DESCRIPTION	SAMPLE				ASSAYS		
				FROM	TO	WIDTH	NO.	Au	Au REASSAY oz/t = ppb	
84.1	85.6		SERICITE SCHIST: VARIABLY LIGHT GREY, MED. GREY, AND LIGHT BROWN; MOD. SOFT; NON-CALCAREOUS BUT WITH LOCAL ORANGE IRON CARBONATE STAIN; NON-MAGNETIC; WELL FOLIATED AT 75° TO C.A.; DOWNHOLE CONTACT ACROSS 10cm QUARTZ VEIN; ALTERATION: - A SERICITIC ALTERATION ZONE? - 10% SECTIONS OF ≤ 5% IRON CARBONATE MINERALIZATION: PYRITE ≤ 1% - DISS AND CLOTS CHALCOPYRITE: TRACE - ASSOCIATED WITH PYRITE; QUARTZ VEINS - 20% - << 1% SULPHIDES	84.1	85.6	1.5	3649	29		
85.6	88.4		MAGNETITE IRON FORMATION: DIFFUSE MAGNETITE BANDS (≤ 5mm WIDE) IN LIGHT TO MED GREY QUARTZ (METACHERT) MATRIX; RELATIVELY UNIFORM; NON-CALCAREOUS; BANDED AT 80° TO C.A.; DOWNHOLE CONTACT GRADUAL OVER 10cm; ALTERATION: NIL? MINERALIZATION: MAGNETITE - 15%; PYRITE - 3% - DISS. CHALCOPYRITE/ARSENOPYRITE: TRACE	85.6	87.0	1.4	3650	705	0.016	549
				87.0	88.4	1.4	3651	820	0.024	823

# Diamond Drill Record

COLLAR:		HOLE SURVEY		
		FOOTAGE	AZIMUTH	DIP
NORTH _____				
EAST _____				
ELEVATION _____				
LOGGED BY <u>G. GORZYNSKI</u>				
DATE LOGGED _____				
MAP REFERENCE NO. <u>HTS 52 P/A</u>		METHOD: _____		

COMPANY NAME NORTHERN DYNASTY EXPLORATIONS LTD  
 PROPERTY NAME MISEHKOW RIVER PROPERTY  
 DRILLING CONTRACTOR LANGLEY DRILLING / BRAMPTON, ONT.  
 ASSAYER ACME ANALYTICAL LABS / VANCOUVER, B.C.  
 PURPOSE OF HOLE \_\_\_\_\_

HOLE NO. <u>M-88-8</u>
CLAIM NAME _____
COMMENCED _____
FINISHED _____
PROJECT NO. <u>MIS</u>

FROM (m)	TO (m)	RECOVY %	DESCRIPTION	SAMPLE				ASSAYS		
				FROM m	TO m	WIDTH m	NO.	Au	Au REASSAY oz/t = ppb	
88.4	90.7		PYRITE IRON FORMATION: RAGGED LENSES AND WISPS (≤ 4mm WIDE) OF PYRITE IN LIGHT TO MED. GREY QUARTZ (METACHERT) MATRIX; NON-CALCAREOUS; NON-MAGNETIC; MOD. FOLIATED AT 80° TO C.A.; DOWNHOLE CONTACT GRADATIONAL OVER 3cm; ALTERATION: NIL? MINERALIZATION: PYRITE: 8% PYRRHOTITE: ≤ 1% - ASSOCIATED WITH PYRITE CNALCOPIRITE: << 1% - DISS ARSENOPYRITE: ≤ 1% - DISS	88.4	89.6	1.2	3652	1905	0.053	1817
				89.6	90.7	1.1	3653	275	0.011	377
90.7	237.7		BASALT: GENERALLY MED. GREEN, HOMOGENOUS, MONOTONOUS; HARDNESS MOH=5; LOCALLY CALCAREOUS (≤ 6% DISS CALCITE); MAGNETIC @ 90.7-173.0m (MAGNETITE); TYPICALLY POORLY TO MOD. FOLIATED; WELL FOLIATED NEAR UPHOLE CONTACT; FOLIATION CONTINUOUSLY VARIES 55°-70° TO C.A. THROUGHOUT; 211.1-237.7- AND 169.0-187.5m FOLIATIONS VARY 0°-90° THROUGH FOLDS WITH QUARTZ VEINING IN FOLD NOSES (SEE BELOW); 232.6-237.7 - Broken Core	90.7	93.7	3.0	3654	11		
				93.7	96.7	3.0	3655	39		
				96.7	99.7	3.0	3656	5		
				144.6	147.2	2.6	3657	177		
				147.2	148.6	1.6	3658	2		
				176.9	179.5	2.6	3659	330		

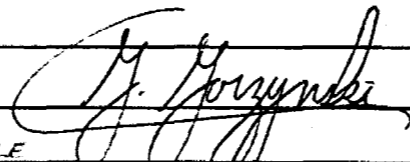
# Diamond Drill Record

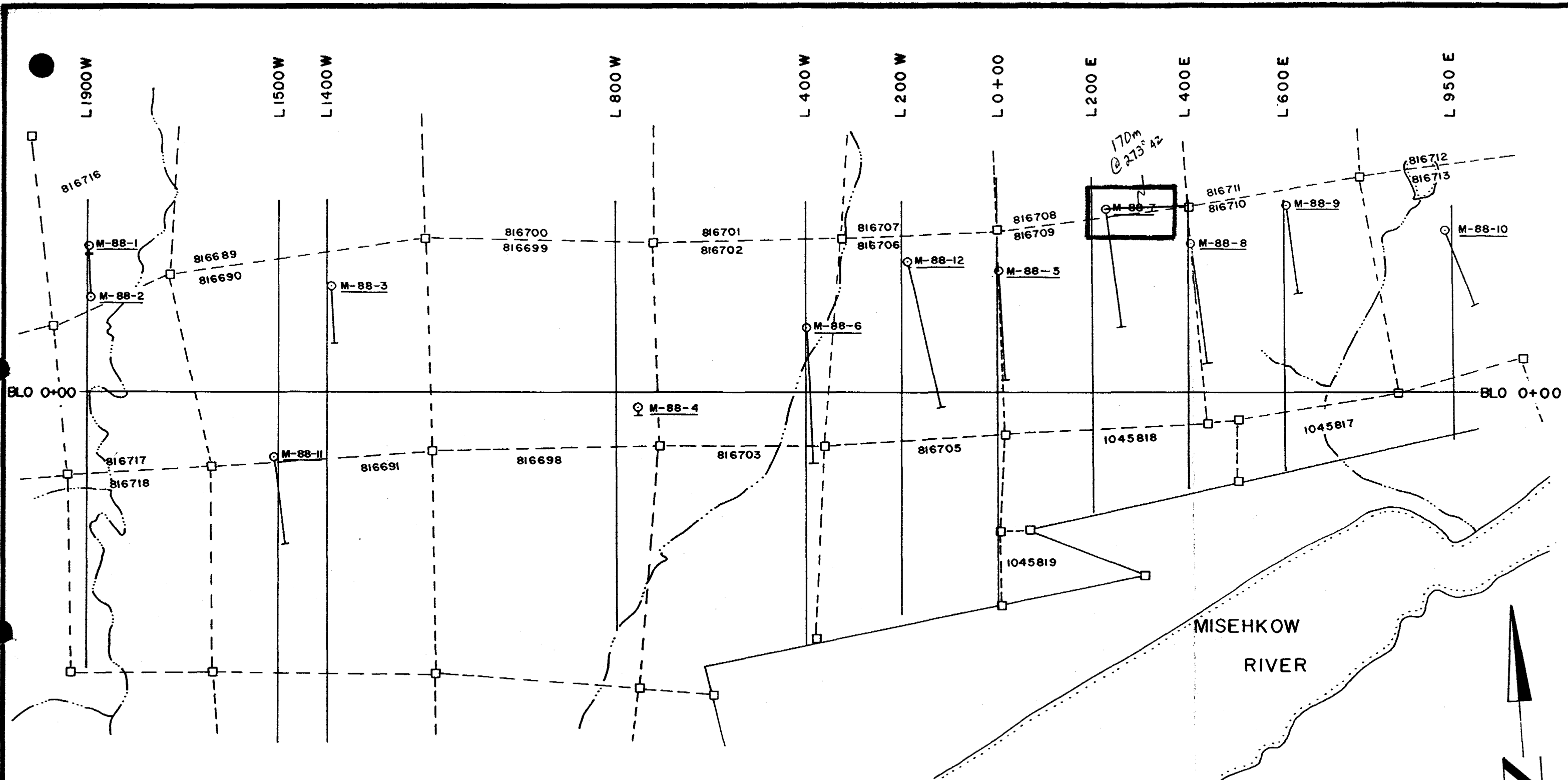
COLLAR:	HOLE SURVEY		
	FOOTAGE	AZIMUTH	DIP
NORTH _____			
EAST _____			
ELEVATION _____			
LOGGED BY _____			
DATE LOGGED _____			
MAP REFERENCE NO. <u>NTS 52 P/4</u>	METHOD: _____		

COMPANY NAME NORTHERN DYNASTY EXPLORATIONS LTD  
 PROPERTY NAME MISEHKOW RIVER PROPERTY  
 DRILLING CONTRACTOR LANGLEY DRILLING/BRAMPTON, ONT.  
 ASSAYER ACME ANALYTICAL LABS/VANCOUVER, B.C.  
 PURPOSE OF HOLE \_\_\_\_\_

HOLE NO. <u>M-88-6</u>
CLAIM NAME _____
COMMENCED _____
FINISHED _____
PROJECT NO. <u>MIS</u>

FROM (m)	TO (m)	RECOVY %	DESCRIPTION	SAMPLE				ASSAYS					
				FROM <sub>m</sub>	TO <sub>m</sub>	WIDTH <sub>m</sub>	NO.	Au					
			ALTERATION: COMMON MINOR BLEACHING THROUGHOUT	179.5	182.4	2.9	3660	ppm	3				
			MINERALIZATION: SULPHIDES TYPICALLY <<1%.	182.4	184.7	2.3	3661		2				
			- 90.7-94.8m: PYRITE ≤1% - DISS.	184.7	186.1	1.4	3662		19				
			QUARTZ ± CARBONATE VEINS: 90.7-97.6m: 7% (WITH 10%.										
			BROKEN CORE AND LOCAL	199.6	202.0	2.4	3663		63				
			CHLORITE-HEALED BRECCIAS -										
			NO SIGNIFICANT SULPHIDES)	211.2	214.3	3.1	3664		4				
			144.6-148.6m: 10% WITH ≤1% PYRITE	214.3	217.0	2.7	3665		11				
			<<1% CHALCOPYRITE AND POSSIBLE	217.0	219.7	2.7	3666		34				
			FREE GOLD (ONE SPECK) AT										
			147.4m;	231.4	234.5	3.1	3667		2				
			176.9-179.5m: 5%; PYRITE <<1%.										
			179.5-186.1m: 5%; PYRITE <<1%.										
			199.6-202.0m: 1%; PYRITE <<1%, MOD										
			BLEACHING AND MOD. SILICIFICATION										
			211.2-219.7m: 5% PYRITE-TRACE										
			231.4-234.5m: 2% PYRITE-TRACE										
237.7			END OF HOLE										
			NOTES										
			1. CASING LEFT IN HOLE										

  
 J. Goryunski

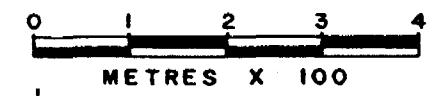


NORTHERN DYNASTY EXPLORATIONS Ltd.

MISEHKOW RIVER PROPERTY  
 1988 DIAMOND DRILL HOLE  
 LOCATION MAP

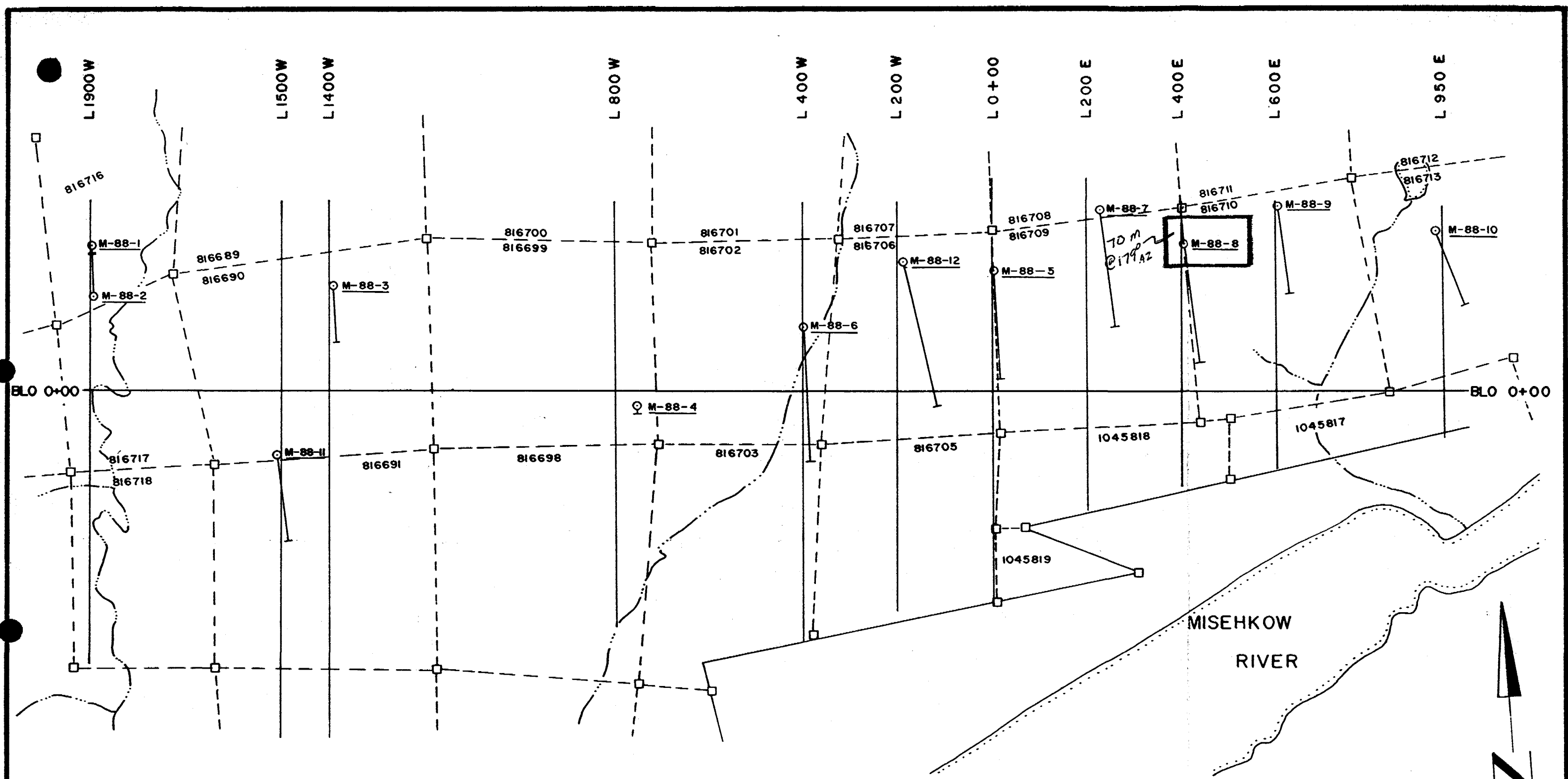
CLAIM MAP : ACHAPI LAKE G-1920

NTS : 52 P/4



- CLAIM POST
- DRILL COLLAR, HOLE NUMBER
- SURFACE PROJECTION





NORTHERN DYNASTY EXPLORATIONS Ltd.

MISEHKOW RIVER PROPERTY

1988 DIAMOND DRILL HOLE

LOCATION MAP

CLAIM MAP : ACHAPI LAKE G-1920

NTS : 52 P/4



- CLAIM POST
- DRILL COLLAR, HOLE NUMBER
- SURFACE PROJECTION





Assessment Library

Mining /

Name and Postal Address of Recorded Holder

NORTHERN DYNASTY EXPLORATIONS LTD.

844 W. HASTINGS ST. VANCOUVER, B.C. V6C 1C8

Summary of Work Performance and Distribution of Credits

ACHAPI LAKE 9-1920

Total Work Days Cr. claimed 1507 1639	Mining Claim			Work Days Cr.			Mining Claim			Work Days Cr.		
	Prefix	Number	Work Days Cr.	Prefix	Number	Work Days Cr.	Prefix	Number	Work Days Cr.	Prefix	Number	Work Days Cr.
For Performance of the following work. (Check one only) <input type="checkbox"/> Manual Work <input type="checkbox"/> Shaft Sinking Drifting or other Lateral Work. <input type="checkbox"/> Compressed Air, other Power driven or mechanical equip. <input type="checkbox"/> Power Stripping <input checked="" type="checkbox"/> Diamond or other Core Drilling <input type="checkbox"/> Land Survey	Pa.	816692	60	Pa.	816704	60	Pa.	840120	60			
		816693	60		816707	60		1045817	180			
		816694	60		816708	60		1045818	180			
		816695	60		816711	60		1045819	180			
		816696	60		816712	60						
		816697	60		816715	60						
		816700	60		816718	7						
		816701	60		840119	60						

All the work was performed on Mining Claims 816708, 816709

Recorded

Required Information eg: type of equipment, Names, Addresses, etc. (See Table Below)

1988 MISEHKOW RIVER DRILL PROGRAM

CONTRACTOR: LANGLEY DRILLING, 49 JAYFIELD RD, BRAMPTON, ONTARIO L6S 3G3

GEOLOGIST: G. GORZYNSKI, P. ENG. 844 W. HASTINGS ST. VANCOUVER, B.C. V6C 1C8

EQUIPMENT: JKS 300 DRILL

DIAMETER OF CORE: BQ, 1507 feet

Performed this Report 1639 days  
Placed on Record this Report 1507  
Balance For future Use 132

DATES OF WORK: 22 SEPT - 28 SEPT 1988

DRILL HOLES SUBMITTED TO ONTARIO GEOLOGICAL SURVEY M-88-8 (0-648 ft.)

WORK SKETCHES AND DRILL SPACE ATTACHED

MAR 30 1989

Date of Report

14 MARCH 1989

Recorded Holder or Agent (Signature)

*Darren C. Elsbey*

Certification Verifying Report of Work

I hereby certify that I have a personal knowledge of the facts set forth in the Report of Work annexed hereto, having performed the work or witnessed same during and after its completion and the annexed report is true.

Name and Postal Address of Person Certifying

DARREN C. ELSBEY 844 W. HASTINGS ST. VANCOUVER, B.C. V6C 1C8

Date Certified

14 MARCH 1989

Certified by (Signature)

*Darren C. Elsbey*

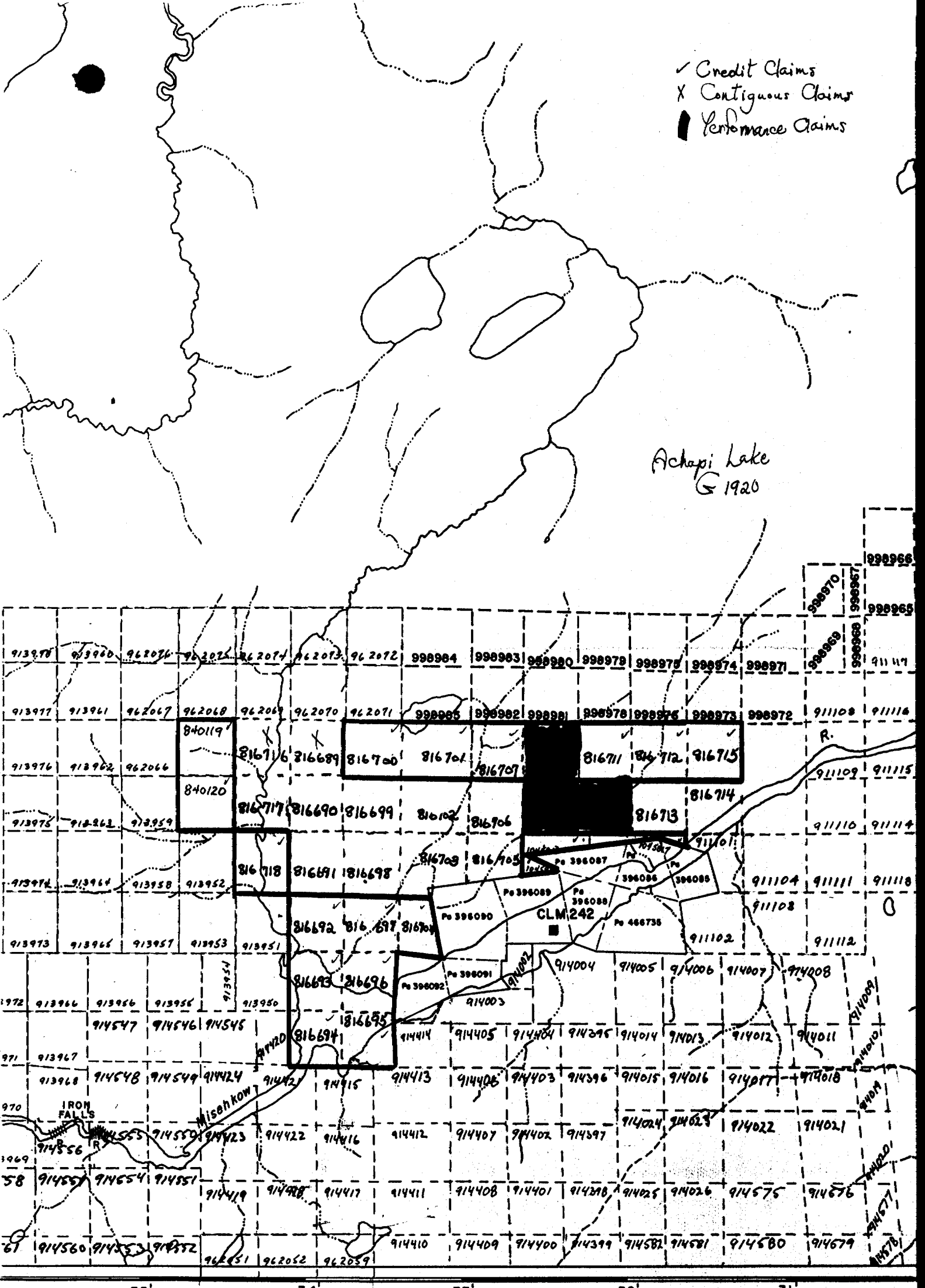
Table of Information/Attachments Required by the Mining Recorder

Type of Work	Specific information per type	Other information (Common to 2 or more types)	Attachments
Manual Work	Nil	Names and addresses of men who performed manual work/operated equipment, together with dates and hours of employment.	Work Sketch: these are required to show the location and extent of work in relation to the nearest claim post.
Shaft Sinking, Drifting or other Lateral Work			
Compressed air, other power driven or mechanical equip.	Type of equipment	Names and addresses of owner or operator together with dates when drilling/stripping done.	
Power Stripping	Type of equipment and amount expended. Note: Proof of actual cost must be submitted within 30 days of recording.		
Diamond or other core drilling	Signed core log showing; footage, diameter of core, number and angles of holes.	Nil	Work Sketch (as above) in duplicate
Land Survey	Name and address of Ontario land surveyor.		Nil



- ✓ Credit Claims
- X Contiguous Claims
- Performance Claims

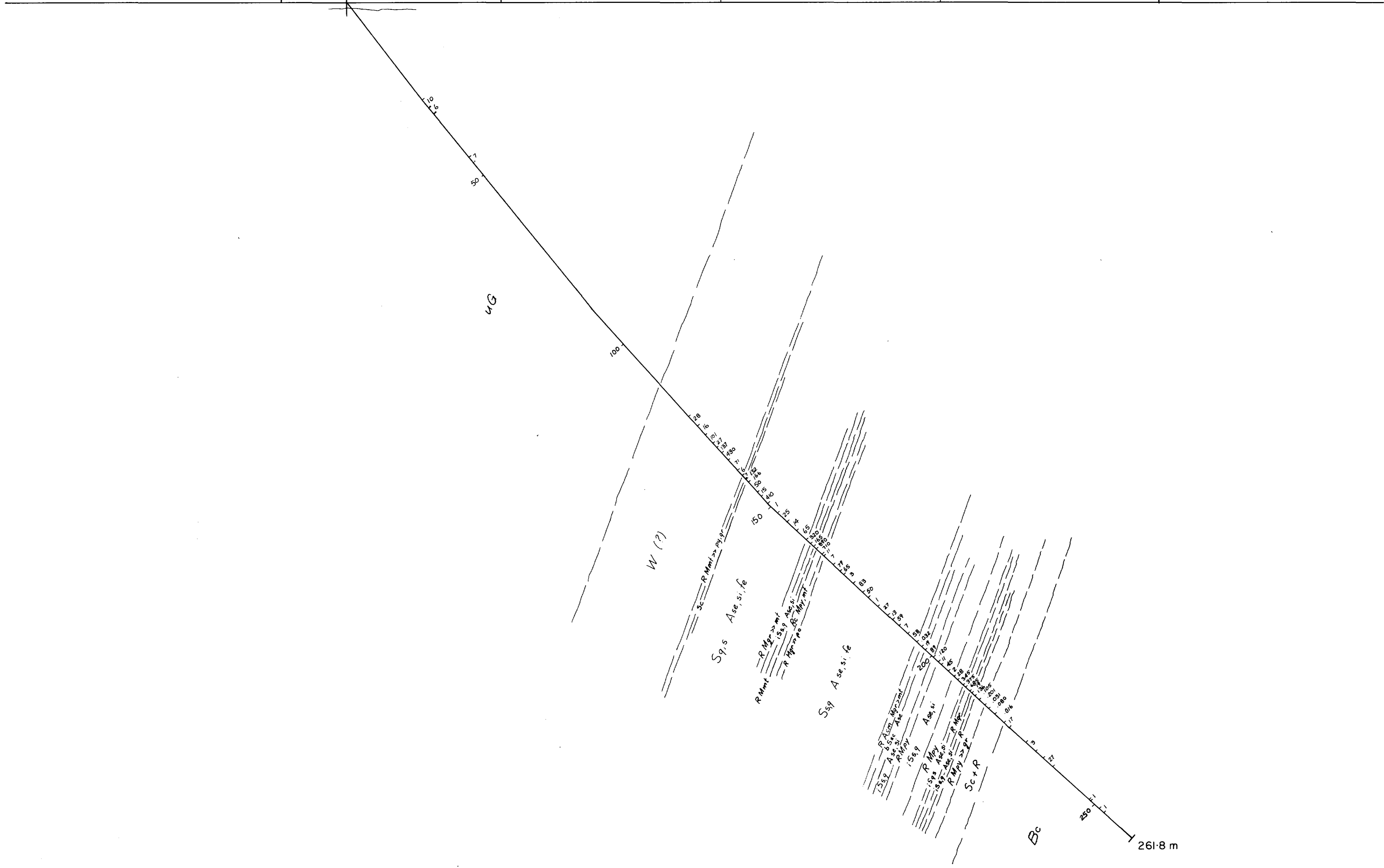
Achapi Lake  
G 1920



NORTH

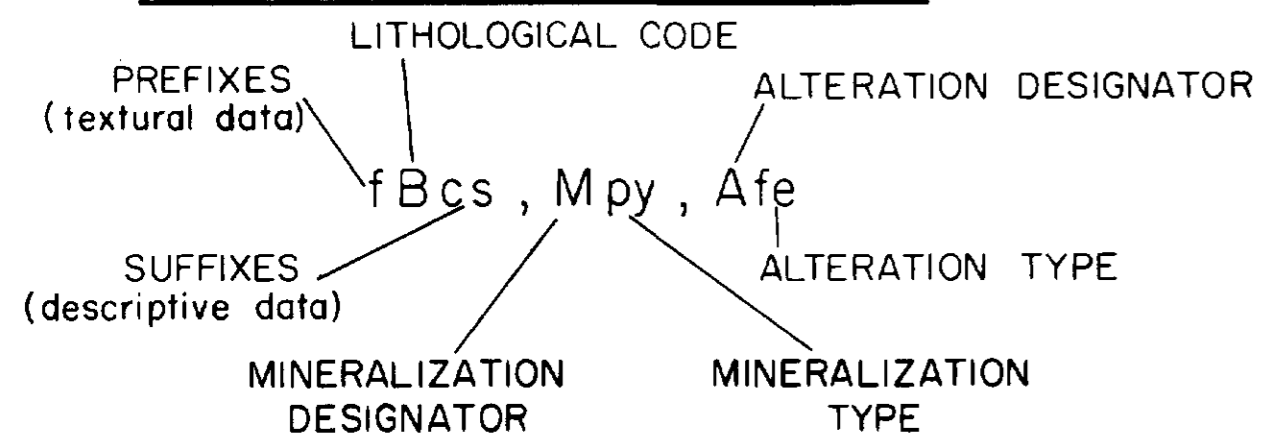
SOUTH

4+00N  
3+85N  
M88-07  
3+50N  
3+00N  
2+50N  
2+00N



15 ppb Au (fire assay prep AA finish)  
20l oz/ton Au (fire assay)

**LITHOLOGICAL LEGEND**



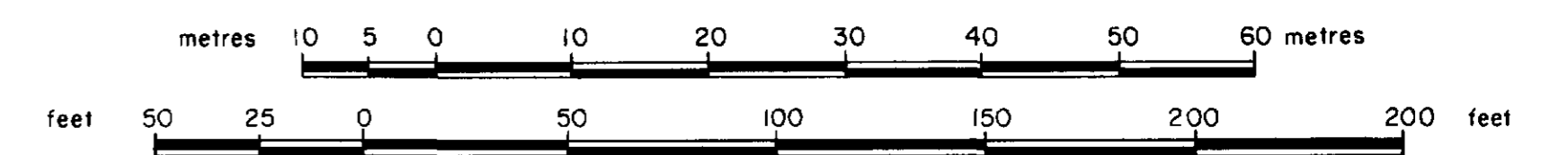
PREFIXES	ROCK TYPE	MINERALOGY	ALTERATION	MINERALIZATION
a amygdaloidal/vesicular	B mafic volcanic	b biotite	se sericite	py pyrite
f foliated	C conglomerate	c chlorite	bi biotite	po pyrrhotite
h hyaloclastite	F felsic volcanic	f felsic	qi quartz eyes	as arsenopyrite
i eyes/augen	G gabbro	g garnetiferous	fe iron carbonate	cp chalcopyrite
p pillowed	K granitoid	k calcareous	cc calcite	mt magnetite
s schistose	H argillite/shale	m mafic	tc talc	qcv quartz-carbonate vein
u unfoliated/massive	N intermediate	q quartz/siliceous	si silicified	au gold
b banded	R iron formation/metachert	s sericite/muscovite	bl bleached	to tourmaline
x breccia	S schist	t staurolite	to tourmaline	sp sphalerite
	T tuff		cm chromium mica	gn galena
	U ultramafic		ch chlorite	
	W greywacke/turbidite		kf potassium feldspar	
	D agglomerate			

**ONTARIO GOLD JOINT VENTURE**  
NORTHERN DYNASTY EXPLORATIONS LTD  
MISEHKOW RIVER CLAIM BLOCK

SECTION 2+30E  
HOLE M88-07  
LOOKING EAST

NTS 52 P/4, CLAIM MAP G-1920

SCALE 1:500

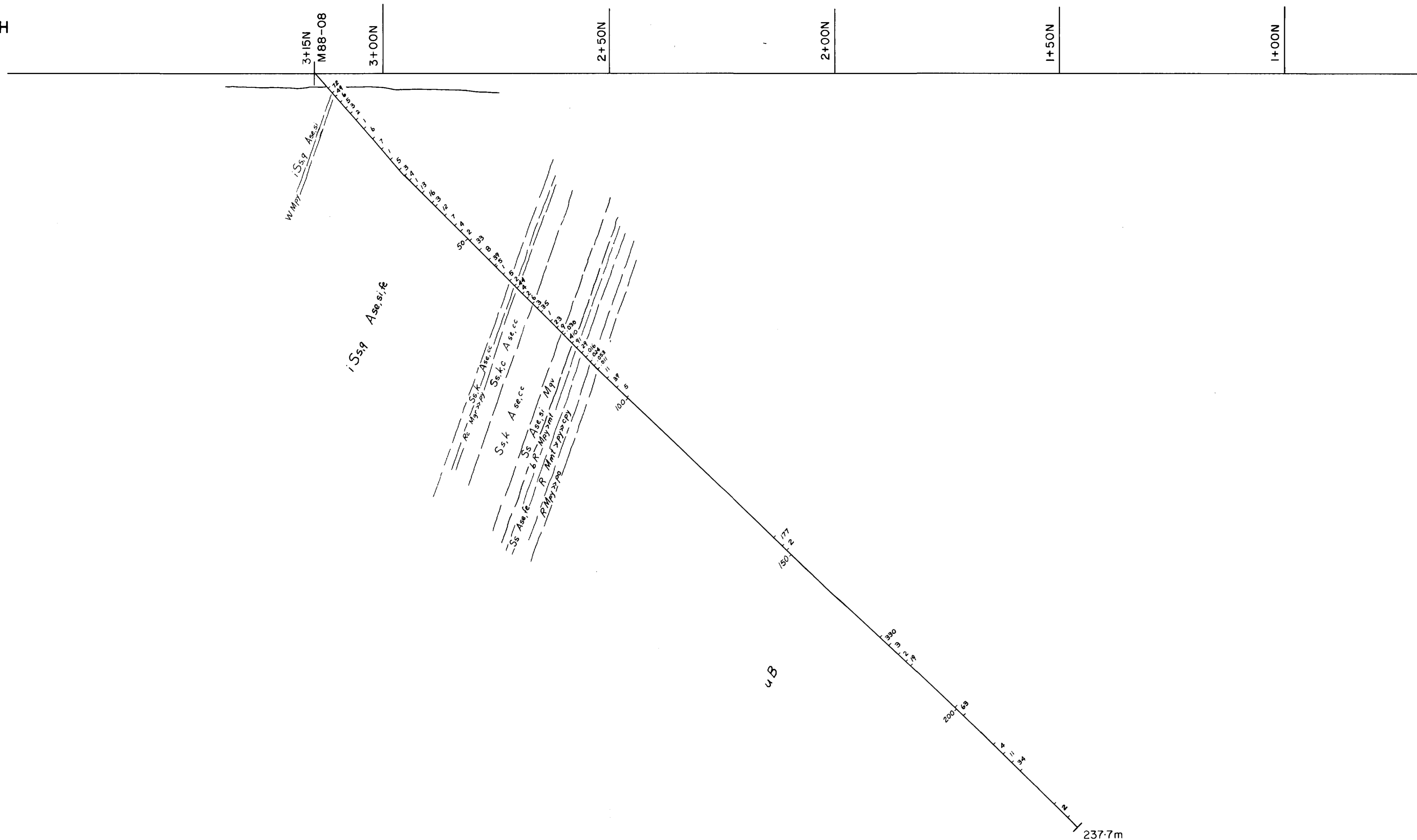


200

SECTION

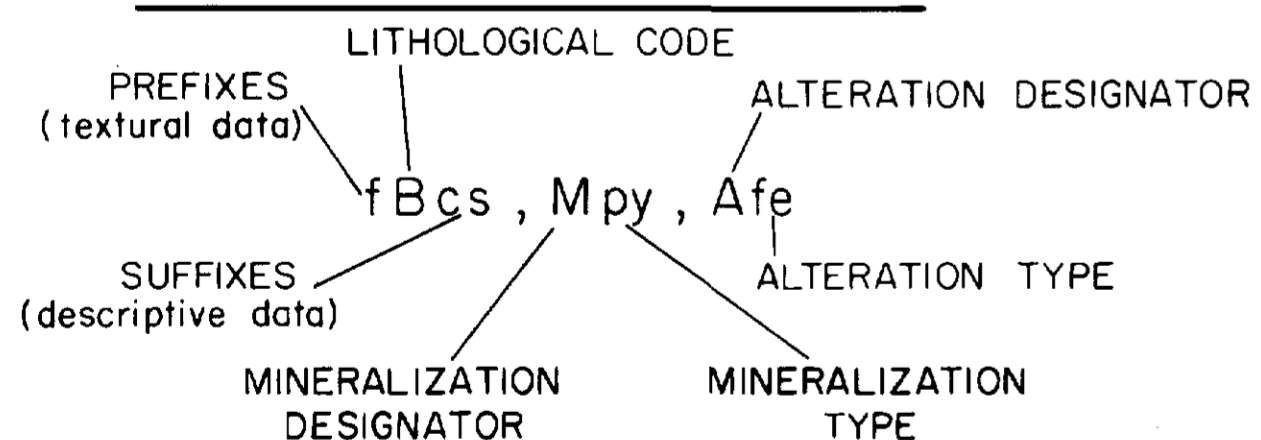
NORTH

SOUTH



17 ppb Au (fire assay prep AA finish)  
 .034 oz/ton Au (fire assay)

**LITHOLOGICAL LEGEND**



PREFIXES	ROCK TYPE	MINERALOGY	ALTERATION	MINERALIZATION
a amygdaloidal/vesicular	B mafic volcanic	b biotite	se sericite	py pyrite
f foliated	C conglomerate	c chlorite	bi biotite	po pyrrhotite
h hyaloclastite	F felsic volcanic	f felsic	qi quartz eyes	as arsenopyrite
i eyes/augen	G gabbro	g garnetiferous	fe iron carbonate	cp chalcopyrite
p pillowed	K granitoid	k calcareous	cc calcite	mt magnetite
s schistose	H argillite/shale	m mafic	tc talc	qcv quartz-carbonate vein
u unfoliated/massive	N intermediate	q quartz/siliceous	si silicified	au gold
b banded	R iron formation/metachert	s sericite/muscovite	bl bleached	to tourmaline
x breccia	S schist	t staurolite	to tourmaline	sp sphalerite
	T tuff	cm chromium mica	cm chromium mica	gn galena
	U ultramafic	ch chlorite	ch chlorite	
	W greywacke/turbidite	kf potassium feldspar	kf potassium feldspar	
	D agglomerate			

**ONTARIO GOLD JOINT VENTURE**  
**NORTHERN DYNASTY EXPLORATIONS LTD**  
**MISEHKOW RIVER CLAIM BLOCK**

**SECTION 4+07E**  
**HOLE M88-08**  
**LOOKING EAST**

NTS 52 P/4, CLAIM MAP G-1920

SCALE 1:500

