



52P09SE0003 18 RICH LAKE

010

DIAMOND DRILLING

AREA: RICH LAKE

REPORT NO: 18

(1)

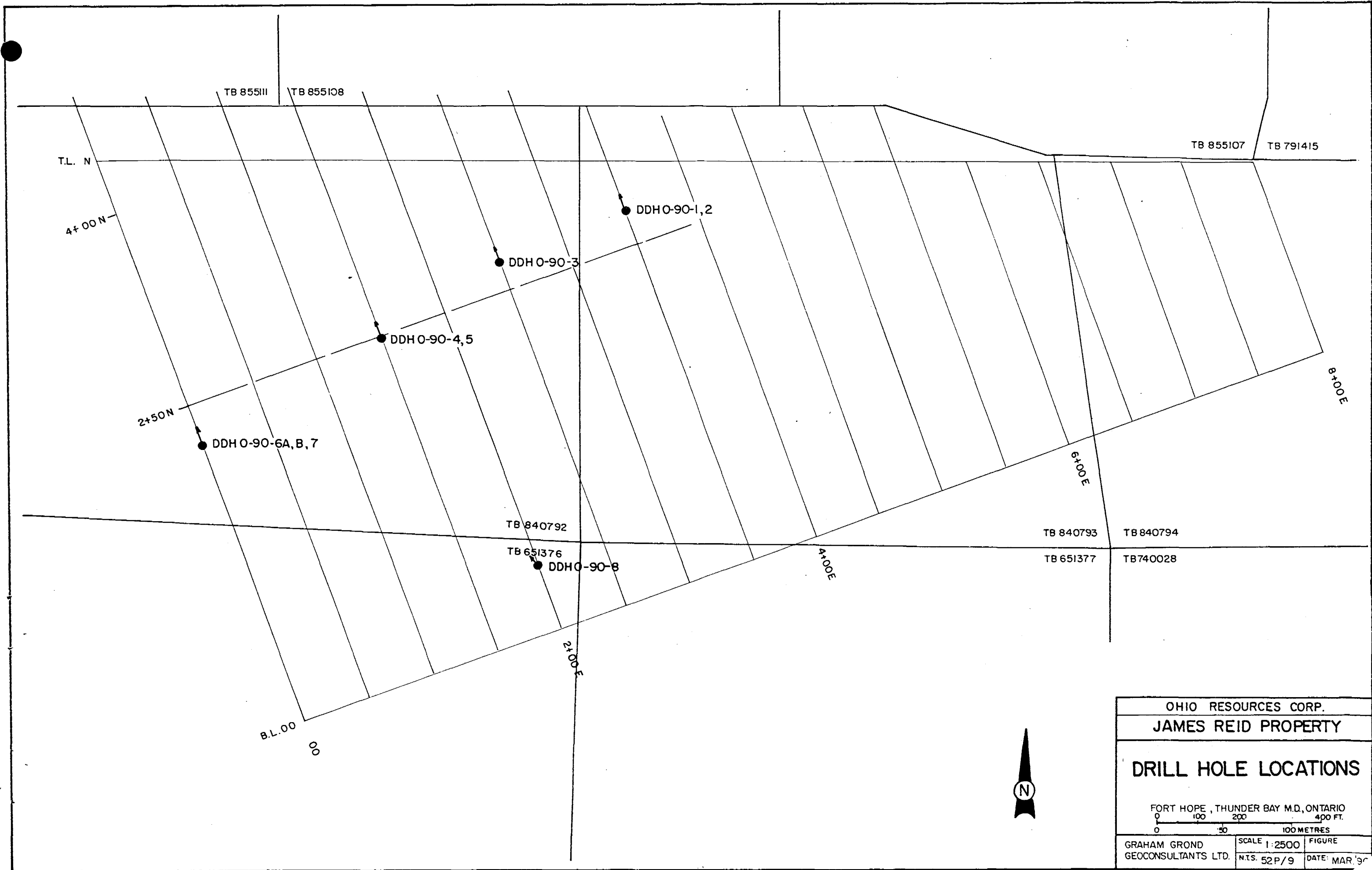
WORK PERFORMED FOR: ROBERT JAMES REID

RECORDED HOLDER: SAME AS ABOVE []

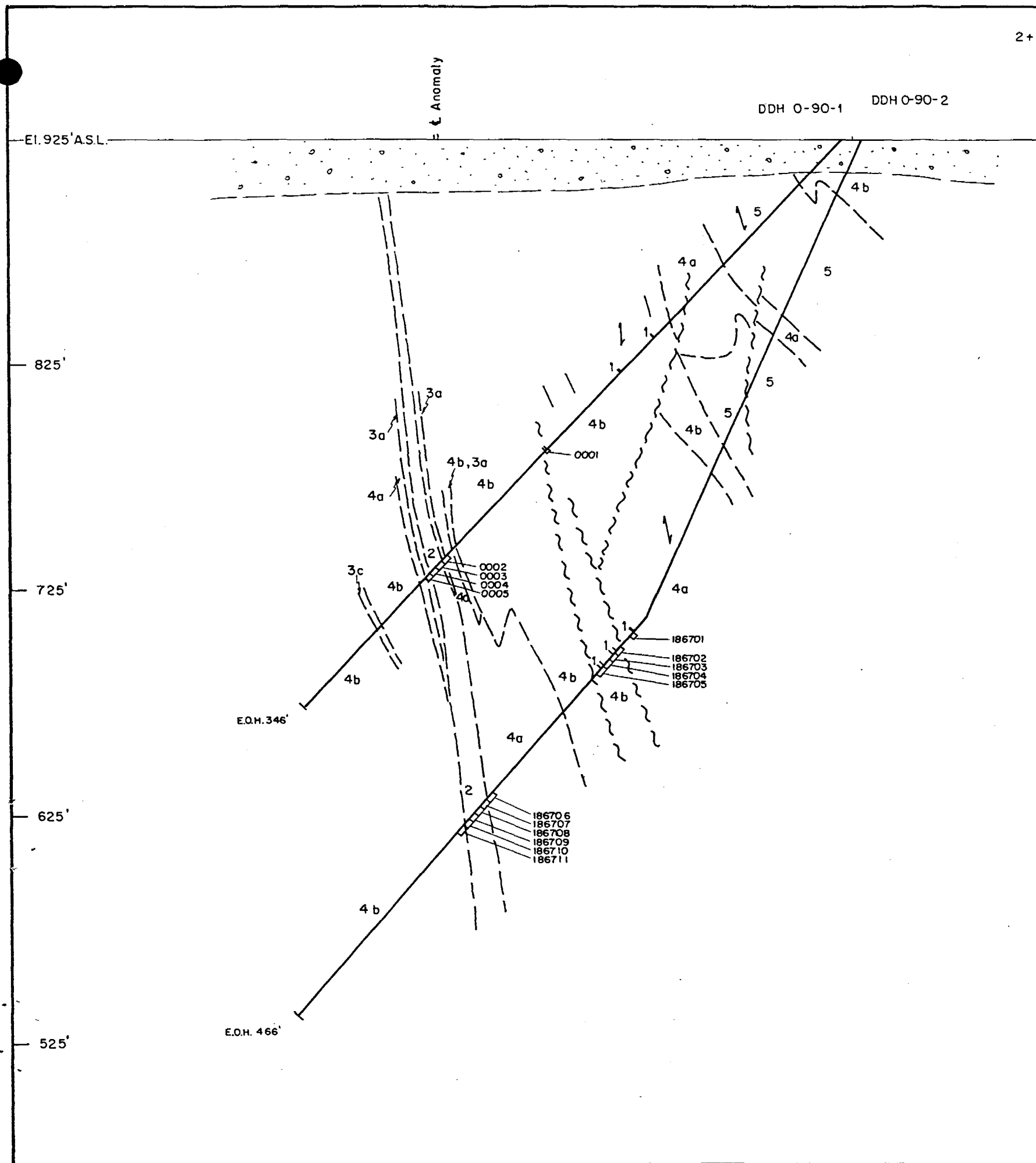
: OTHER []

<u>CLAIM NO.</u>	<u>HOLE NO.</u>	<u>FOOTAGE</u>	<u>DATE</u>	<u>NOTE</u>
TB 840993	0-90-1	346FT	FEB,90	1
	0-90-2	466FT	FEB,90	1
TB 840792	0-90-3	466FT	FEB,90	1
	0-90-4	286FT	FEB,90	1
	0-90-5	446FT	FEB,90	1
	0-90-6A	20FT	FEB,90	1
TB 651377	0-90-6B	75FT	FEB,90	1
	0-90-7	391FT	FEB,90	1
	0-90-8	411FT	FEB-MAR,90	1

NOTE: (1) #W9004-147, filed June, 1990



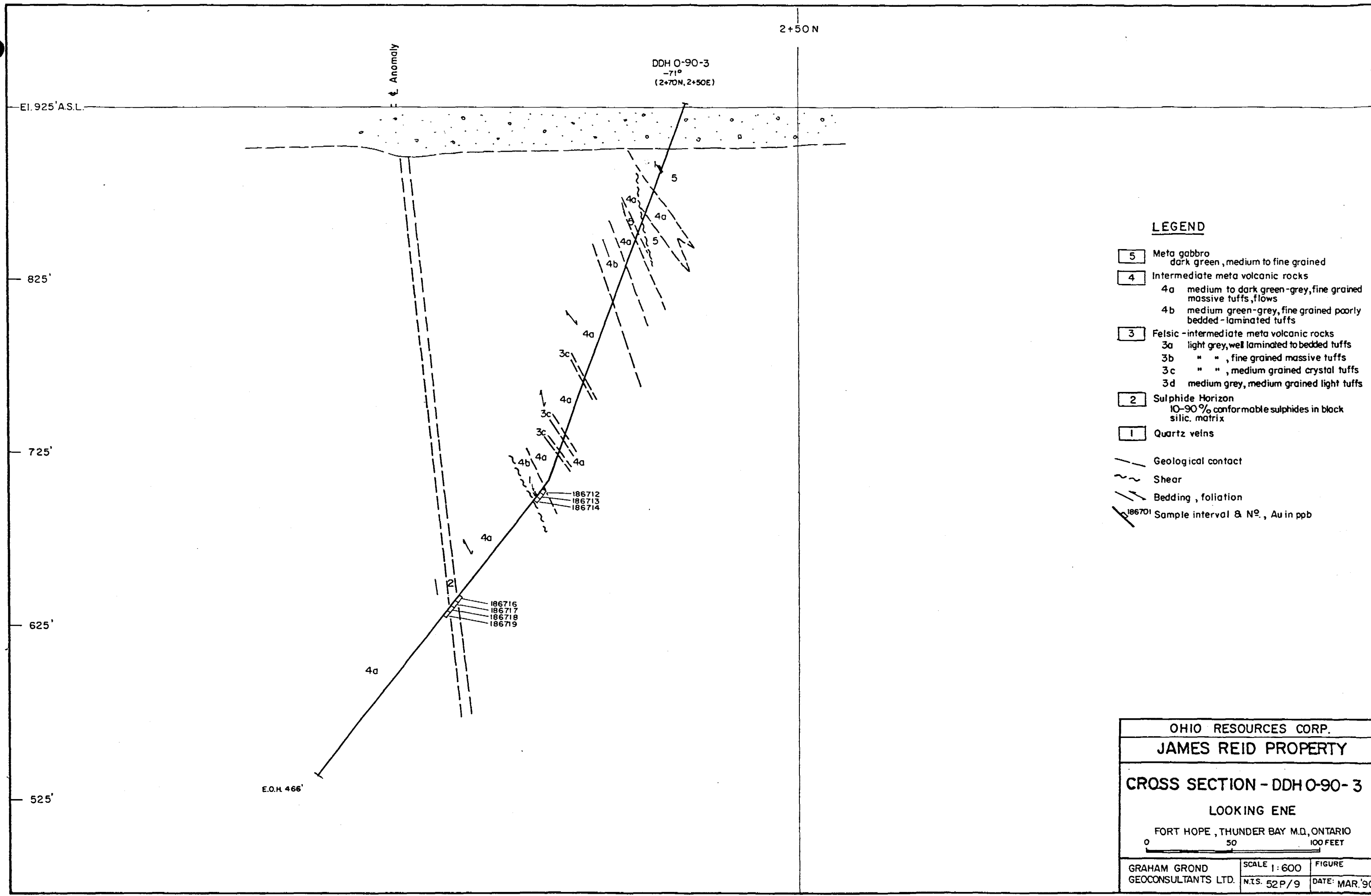
OHIO RESOURCES CORP.		
JAMES REID PROPERTY		
DRILL HOLE LOCATIONS		
FORT HOPE, THUNDER BAY M.D., ONTARIO		
GRAHAM GROND GEOCONSULTANTS LTD.	SCALE 1:2500 N.T.S. 52P/9	FIGURE DATE: MAR '90



LEGEND

- 5** Meta gabbro
dark green, medium to fine grained
 - 4** Intermediate meta volcanic rocks
 - 4a medium to dark green-grey, fine grained massive tuffs, flows
 - 4b medium green-grey, fine grained poorly bedded-laminated tuffs
 - 3** Felsic-intermediate meta volcanic rocks
 - 3a light grey, well laminated to bedded tuffs
 - 3b " " , fine grained massive tuffs
 - 3c " " , medium grained crystal tuffs
 - 3d medium grey, medium grained light tuffs
 - 2** Sulphide Horizon
10-90% conformable sulphides in black silic. matrix
 - 1** Quartz veins
- - - Geological contact
 ~~~~~ Shear  
 // // Bedding, foliation  
 / 186701 Sample interval & No., Au in ppb

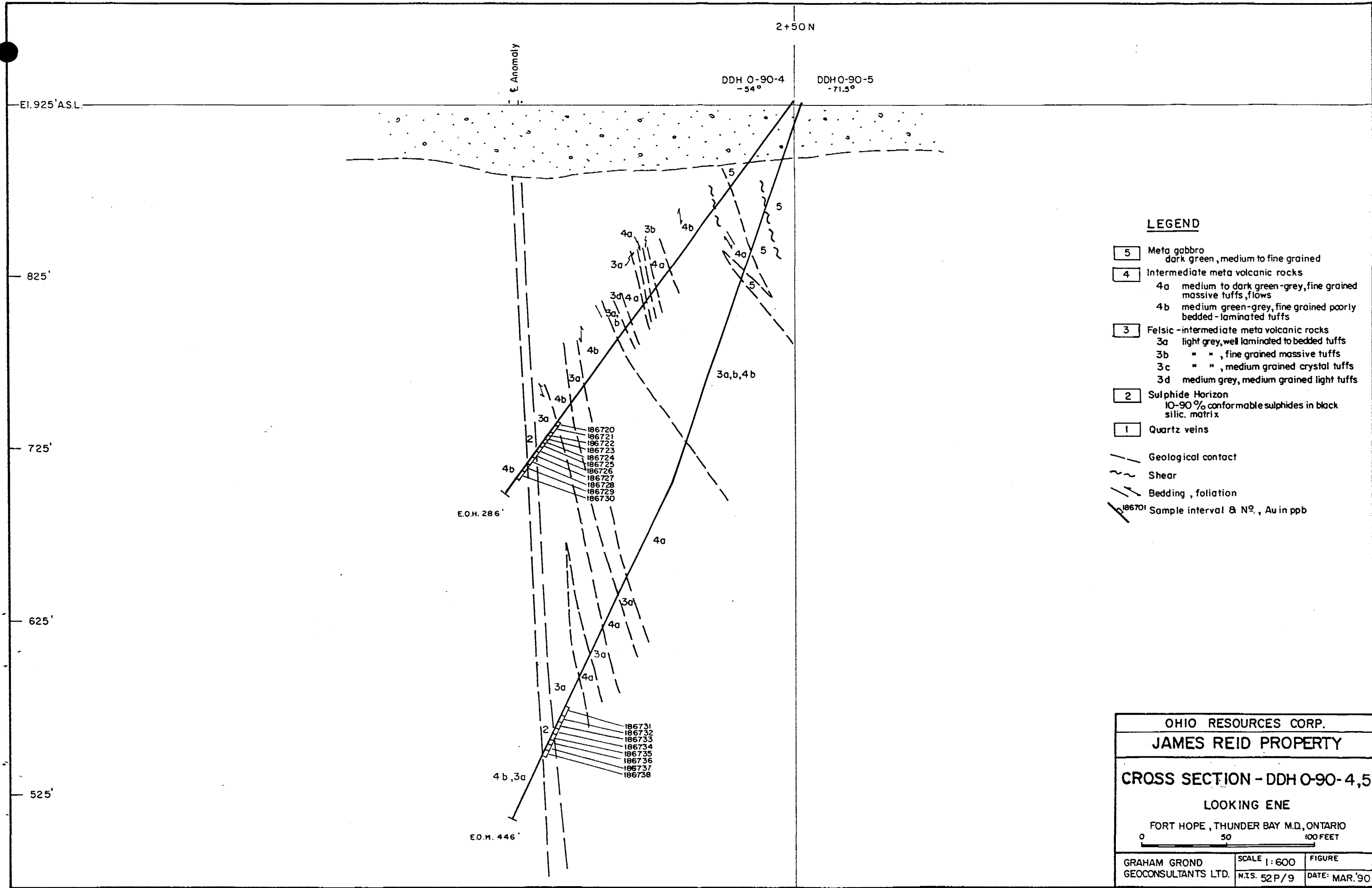
|                                      |                             |                          |
|--------------------------------------|-----------------------------|--------------------------|
| OHIO RESOURCES CORP.                 |                             |                          |
| JAMES REID PROPERTY                  |                             |                          |
| <b>CROSS SECTION - DDH 0-90-1, 2</b> |                             |                          |
| LOOKING ENE                          |                             |                          |
| FORT HOPE, THUNDER BAY M.D., ONTARIO |                             |                          |
|                                      |                             |                          |
| GRAHAM GROND<br>GEOCONSULTANTS LTD.  | SCALE 1:600<br>N.T.S. 52P/9 | FIGURE<br>DATE: MAR. '90 |



**LEGEND**

- 5 Meta gabbro  
dark green, medium to fine grained
- 4 Intermediate meta volcanic rocks
  - 4a medium to dark green-grey, fine grained massive tuffs, flows
  - 4b medium green-grey, fine grained poorly bedded - laminated tuffs
- 3 Felsic - intermediate meta volcanic rocks
  - 3a light grey, well laminated to bedded tuffs
  - 3b " " , fine grained massive tuffs
  - 3c " " , medium grained crystal tuffs
  - 3d medium grey, medium grained light tuffs
- 2 Sulphide Horizon  
10-90% conformable sulphides in black silic. matrix
- 1 Quartz veins
- Geological contact
- Shear
- Bedding, foliation
- 186701 Sample interval & N<sup>o</sup>, Au in ppb

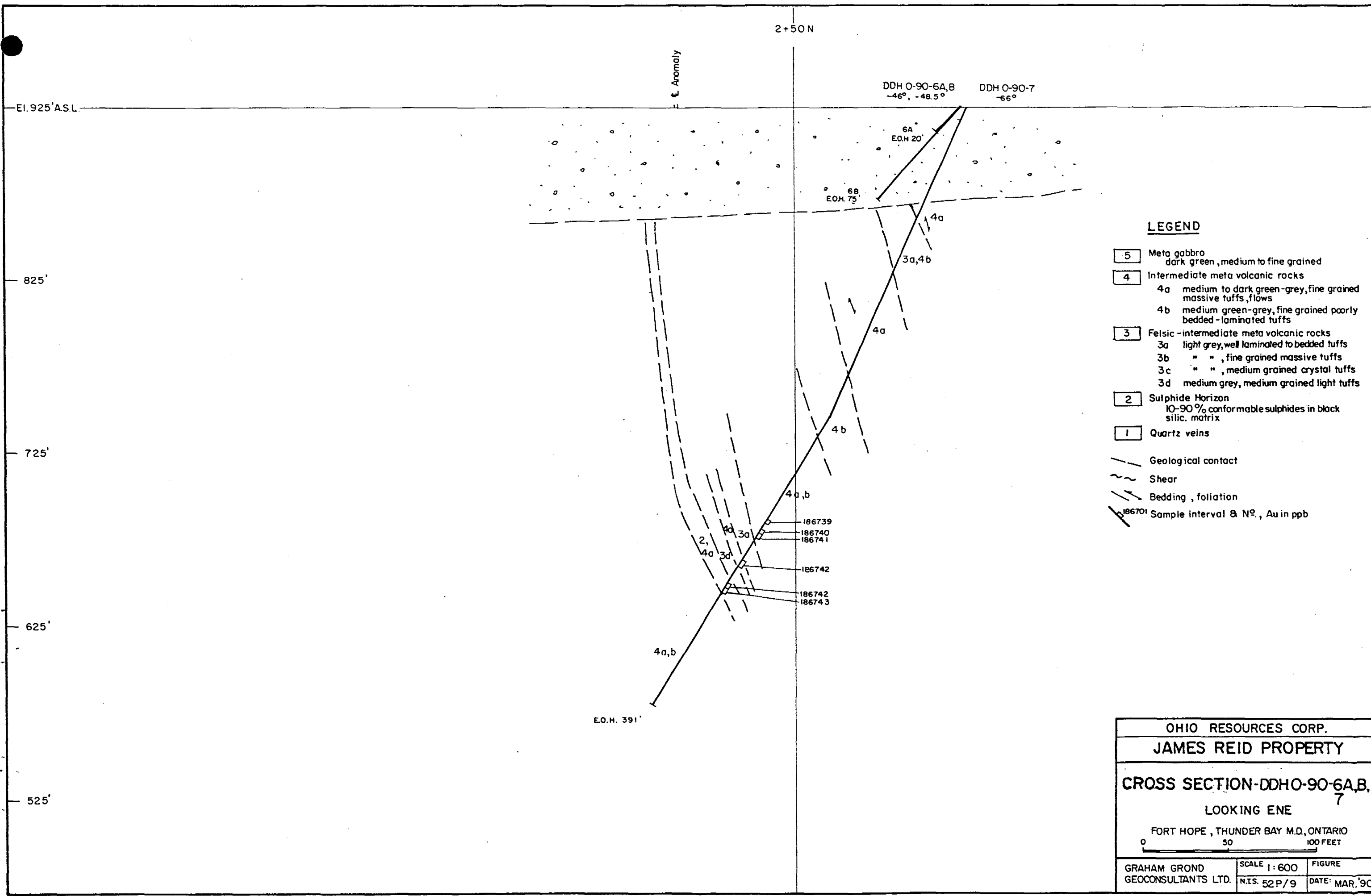
|                                      |                              |                          |
|--------------------------------------|------------------------------|--------------------------|
| OHIO RESOURCES CORP.                 |                              |                          |
| JAMES REID PROPERTY                  |                              |                          |
| <b>CROSS SECTION - DDH 0-90-3</b>    |                              |                          |
| LOOKING ENE                          |                              |                          |
| FORT HOPE, THUNDER BAY M.D., ONTARIO |                              |                          |
|                                      |                              |                          |
| GRAHAM GROND<br>GEOCONSULTANTS LTD.  | SCALE 1:600<br>N.T.S. 52 P/9 | FIGURE<br>DATE: MAR. '90 |



**LEGEND**

- 5 Meta gabbro  
dark green, medium to fine grained
- 4 Intermediate meta volcanic rocks
  - 4a medium to dark green-grey, fine grained massive tuffs, flows
  - 4b medium green-grey, fine grained poorly bedded - laminated tuffs
- 3 Felsic - intermediate meta volcanic rocks
  - 3a light grey, well laminated to bedded tuffs
  - 3b " " , fine grained massive tuffs
  - 3c " " , medium grained crystal tuffs
  - 3d medium grey, medium grained light tuffs
- 2 Sulphide Horizon  
10-90% conformable sulphides in black silic. matrix
- 1 Quartz veins
- Geological contact
- Shear
- Bedding, foliation
- Sample interval & N<sup>o</sup>, Au in ppb

|                                      |                             |                         |
|--------------------------------------|-----------------------------|-------------------------|
| OHIO RESOURCES CORP.                 |                             |                         |
| JAMES REID PROPERTY                  |                             |                         |
| <b>CROSS SECTION - DDH O-90-4,5</b>  |                             |                         |
| LOOKING ENE                          |                             |                         |
| FORT HOPE, THUNDER BAY M.D., ONTARIO |                             |                         |
|                                      |                             |                         |
| GRAHAM GROND<br>GEOCONSULTANTS LTD.  | SCALE 1:600<br>N.T.S. 52P/9 | FIGURE<br>DATE: MAR.'90 |



**LEGEND**

- 5 Meta gabbro  
dark green, medium to fine grained
  - 4 Intermediate meta volcanic rocks
    - 4a medium to dark green-grey, fine grained massive tuffs, flows
    - 4b medium green-grey, fine grained poorly bedded - laminated tuffs
  - 3 Felsic - intermediate meta volcanic rocks
    - 3a light grey, well laminated to bedded tuffs
    - 3b " " , fine grained massive tuffs
    - 3c " " , medium grained crystal tuffs
    - 3d medium grey, medium grained light tuffs
  - 2 Sulphide Horizon  
10-90% conformable sulphides in black silic. matrix
  - 1 Quartz veins
- / Geological contact  
 ~ Shear  
 // Bedding, foliation  
 [ ] Sample interval & No., Au in ppb

|                                      |                             |                          |
|--------------------------------------|-----------------------------|--------------------------|
| OHIO RESOURCES CORP.                 |                             |                          |
| JAMES REID PROPERTY                  |                             |                          |
| CROSS SECTION-DDHO-90-6A,B,<br>7     |                             |                          |
| LOOKING ENE                          |                             |                          |
| FORT HOPE, THUNDER BAY M.D., ONTARIO |                             |                          |
|                                      |                             |                          |
| GRAHAM GROND<br>GEOCONSULTANTS LTD.  | SCALE 1:600<br>N.T.S. 52P/9 | FIGURE<br>DATE: MAR. '90 |

DDH 0-90-8

EI. 925' ASL.

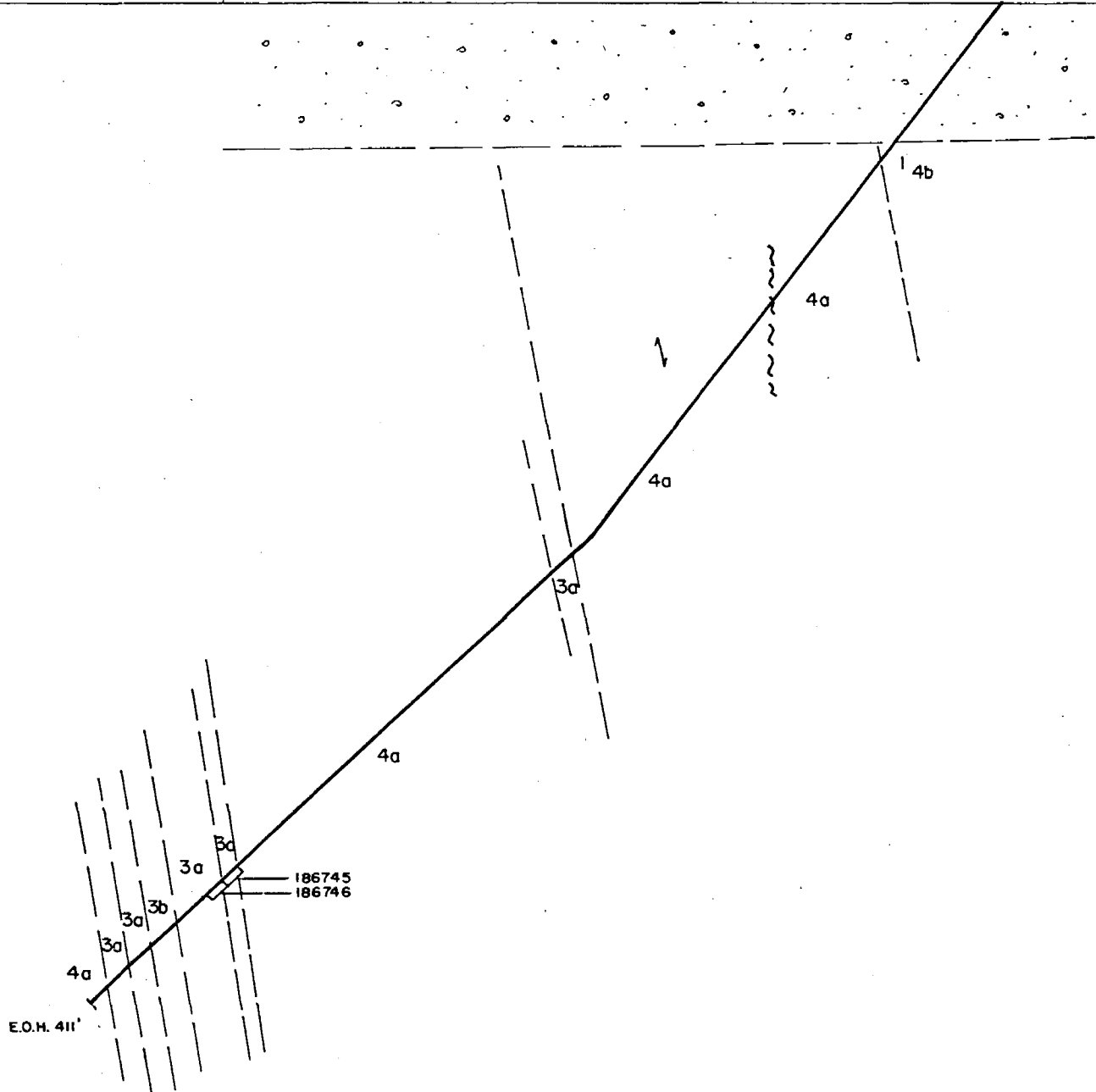
± Anomaly

825'

725'

625'

525'



**LEGEND**

- 5 Meta gabbro  
dark green, medium to fine grained
- 4 Intermediate meta volcanic rocks
  - 4a medium to dark green-grey, fine grained massive tuffs, flows
  - 4b medium green-grey, fine grained poorly bedded-laminated tuffs
- 3 Felsic-intermediate meta volcanic rocks
  - 3a light grey, well laminated to bedded tuffs
  - 3b " " , fine grained massive tuffs
  - 3c " " , medium grained crystal tuffs
  - 3d medium grey, medium grained light tuffs
- 2 Sulphide Horizon  
10-90% conformable sulphides in black silic. matrix
- 1 Quartz veins
- Geological contact
- Shear
- Bedding, foliation
- 186701 Sample interval & No., Au in ppb

|                                      |                             |                          |
|--------------------------------------|-----------------------------|--------------------------|
| OHIO RESOURCES CORP.                 |                             |                          |
| JAMES REID PROPERTY                  |                             |                          |
| <b>CROSS SECTION - DDH 0-90-8</b>    |                             |                          |
| LOOKING ENE                          |                             |                          |
| FORT HOPE, THUNDER BAY M.D., ONTARIO |                             |                          |
|                                      |                             |                          |
| GRAHAM GROND<br>GEOCONSULTANTS LTD.  | SCALE 1:600<br>N.T.S. 52P/9 | FIGURE<br>DATE: MAR. '90 |

LOCATION: 3450 E 2175 N

# DRILL HOLE LOG

HOLE No. 0-90-1 PAGE NO 114

AZIM: 340° ELEV: SURFACE 925'  
 DIP: -47° LENGTH: 346'  
 CORE SIZE: B C

## DIP TEST

PROPERTY: JAMES REID

STARTED: Feb 13 1990  
 COMPLETED: Feb 15 7 PM.  
 PURPOSE: TEST IN EXTENSION OF N22W060  
 N-12 ZONE / 1D-MAG TARGET.  
 CORE RECOVERY:

| FOOTAGE | READING | CORRECT | FOOTAGE | READING | CORRECT |
|---------|---------|---------|---------|---------|---------|
|         |         |         |         |         |         |
|         |         |         |         |         |         |
|         |         |         |         |         |         |
|         |         |         |         |         |         |
|         |         |         |         |         |         |

CLAIM NO: 7B 840793  
 SECTION:  
 LOGGED BY: D. KUPAN  
 DATE LOGGED: Feb 16 1990  
 DRILLING CO: LONGYEAR.  
 ASSAYED BY: ACCURASAT

| FOOTAGE |       | DESCRIPTION                                                                                                                                                                                                                                                  | SAMPLE NO. | FOOTAGE |    | LENGTH | ASSAYS |  |  |  |  |  |  |
|---------|-------|--------------------------------------------------------------------------------------------------------------------------------------------------------------------------------------------------------------------------------------------------------------|------------|---------|----|--------|--------|--|--|--|--|--|--|
| FROM    | TO    |                                                                                                                                                                                                                                                              |            | FROM    | TO |        |        |  |  |  |  |  |  |
| 0       | 23'   | OVERFLOW                                                                                                                                                                                                                                                     |            |         |    |        |        |  |  |  |  |  |  |
| 23.0    | 25.0  | LIGHT GREEN BLEACHED ANDESITIC TUFF<br>V.F.G. POORLY BEDDED // TO FOLIATION @ 47°<br>CA. 1% ALSS. Py, MINOR FINE CALCITE                                                                                                                                     |            |         |    |        |        |  |  |  |  |  |  |
| 25.0    | 78.0  | MED-DARK GREEN METO. Gabbro<br>FINE GRAIN WEAKLY FOLIATED, CONTAINS<br>10-15% 2MM PYROXENE CLOTS<br>APPEARS SPOTTED. UNIT CONTAINS NEAR<br>PERVASIVE CARBONATE ALT. 1% Py, MINOR<br>CALCITE STRAINERS.<br>49-51 GROUND CORE<br>62.0 FOL. @ 50° CA            |            |         |    |        |        |  |  |  |  |  |  |
| 78.0    | 116.5 | DARK GREY-GREEN Aphanitic, nonchondrous<br>MASSIVE ANDESITE. UNIT CONTAINS<br>ABUNDANT 1-2 MM CALCITE STRAINERS<br>WITH ASS. FINE Py OR 2-4 MM GLOB<br>OF Py, UNIT POORLY FOLIATED.<br>85-86.2 STRONG FOL/SHEAR 25°<br>UNIT CONTAINS 1% .5 MM WHITE CRYSTALS |            |         |    |        |        |  |  |  |  |  |  |
| 116.5   | 251.0 | LIGHT-DARK GREEN, LOCALLY WELL<br>BANDS ANDESITIC TUFF. VERY FINE<br>GRAIN, MOD. WELL FOLIATED. UNIT<br>CONTAINS SEVERAL MINOR QUARTZ<br>AND CALCITE STRAINERS, 1% Py, Py<br>OVERALL LIGHTER PALE BANDS UP TO<br>1" ARE SOFTER CONTAINING MINOR CALCITE      |            |         |    |        |        |  |  |  |  |  |  |

ONTARIO GEOLOGICAL SURVEY  
 ASSESSMENT FILES  
 OFFICE  
 APR 24 1990  
 RECEIVED







LOCATION: \_\_\_\_\_  
 AZIM: \_\_\_\_\_ ELEV: \_\_\_\_\_  
 DIP: \_\_\_\_\_ LENGTH: \_\_\_\_\_  
 CORE SIZE: \_\_\_\_\_  
 STARTED: \_\_\_\_\_  
 COMPLETED: \_\_\_\_\_  
 PURPOSE: \_\_\_\_\_  
 CORE RECOVERY: \_\_\_\_\_

# DRILL HOLE LOG

HOLE No. 090-1 PAGE NO. 4/4

## DIP TEST

| FOOTAGE | READING | CORRECT | FOOTAGE | READING | CORRECT |
|---------|---------|---------|---------|---------|---------|
|         |         |         |         |         |         |
|         |         |         |         |         |         |
|         |         |         |         |         |         |
|         |         |         |         |         |         |
|         |         |         |         |         |         |

PROPERTY: \_\_\_\_\_  
 CLAIM NO: \_\_\_\_\_  
 SECTION: \_\_\_\_\_  
 LOGGED BY: \_\_\_\_\_  
 DATE LOGGED: \_\_\_\_\_  
 DRILLING CO: \_\_\_\_\_  
 ASSAYED BY: \_\_\_\_\_

| FOOTAGE |       | DESCRIPTION                                                                                                                                                                       | SAMPLE NO. | FOOTAGE |    | LENGTH | ASSAYS |  |  |  |
|---------|-------|-----------------------------------------------------------------------------------------------------------------------------------------------------------------------------------|------------|---------|----|--------|--------|--|--|--|
| FROM    | TO    |                                                                                                                                                                                   |            | FROM    | TO |        |        |  |  |  |
| 296.2   | 299.2 | LIGHT-MED. OALINE CRYSTAL TUFF, CONTACTS FAIRLY SHARP & CONFORMABLE AT 60° CONTAINS 40' 1-3mm OFF WHITE PLAC. CRYSTALS 41% PALE BLUE QTZ BIPS.                                    |            |         |    |        |        |  |  |  |
| 299.2   | 346   | MEDIUM-GREENISH GREY FINE AND. ASH TUFF (?) POORLY STRUCTURED, LOCALLY FINE SILT SIZE. CONTAINS MINOR CRYSTAL TUFF LAYERS, MINOR QUARTZ VEINING AND CARBONATE STAINING 11 TO FOL. |            |         |    |        |        |  |  |  |
|         |       | 303.0 3" RTZ VEIN 25°, HARBEN                                                                                                                                                     |            |         |    |        |        |  |  |  |
|         |       | 303.3 2" " " " "                                                                                                                                                                  |            |         |    |        |        |  |  |  |
|         |       | 304.0 1" " " " "                                                                                                                                                                  |            |         |    |        |        |  |  |  |
|         |       | 307.0 2" CRYSTAL TUFF LAYER                                                                                                                                                       |            |         |    |        |        |  |  |  |
|         |       | 308.0 1" " " " "                                                                                                                                                                  |            |         |    |        |        |  |  |  |
|         |       | 312.5-314.5 20% CALICHE AS 2mm-2cm CARBONATE MANDS 11 TO FOL AT 67°                                                                                                               |            |         |    |        |        |  |  |  |
|         |       | 319-320.5 CRYSTAL TUFF CONTACTS AT 60° ABUNDANT FINE 11 TO FOL. CARB STAINING 1-2mm @ 8-12/FOOT.                                                                                  |            |         |    |        |        |  |  |  |
|         |       | 328.8-329.6 CRYSTAL TUFF EOH.                                                                                                                                                     |            |         |    |        |        |  |  |  |

*A. Graham*  
 per *D.L. Kuhn*

LOCATION: 3750 E 275N

# DRILL HOLE LOG

HOLE No. 0-90-2 PAGE No. 114

AZIM: 340'AZ ELEV: 975'  
 DIP: -67 LENGTH: 466'  
 CORE SIZE: BR

## DIP TEST

PROPERTY: JAMES BEID

| FOOTAGE | READING | CORRECT | FOOTAGE | READING | CORRECT |
|---------|---------|---------|---------|---------|---------|
| 465     | -57°    | -49     |         |         |         |
|         |         |         |         |         |         |
|         |         |         |         |         |         |
|         |         |         |         |         |         |

CLAIM NO: TA 340743

SECTION:

LOGGED BY: D. LYMAN

DATE LOGGED: Feb 19 1990

DRILLING CO: LIVING FAR

ASSAYED BY: ACCURASSAT

STARTED: Feb 15 7 AM  
 COMPLETED: Feb 18 1990  
 PURPOSE: TEST GEOPHYSICAL, DOWN OIL  
 90.1 SULPHIDES  
 CORE RECOVERY:

| FOOTAGE |       | DESCRIPTION                                                                                                                                                                                                            | SAMPLE NO. | FOOTAGE |    | LENGTH | ASSAYS |  |  |  |
|---------|-------|------------------------------------------------------------------------------------------------------------------------------------------------------------------------------------------------------------------------|------------|---------|----|--------|--------|--|--|--|
| FROM    | TO    |                                                                                                                                                                                                                        |            | FROM    | TO |        |        |  |  |  |
| 0       | 21    | CASING                                                                                                                                                                                                                 |            |         |    |        |        |  |  |  |
| 21      | 26.0  | LIGHT GREEN - GREEN SILTY MUDSTONE<br>AND TUFF. POORLY MIXED at 55"                                                                                                                                                    |            |         |    |        |        |  |  |  |
| 26.0    | 35.0  | CRACKED MUDSTONE, CRACKS<br>CONTAINING SANDY SLURRY.<br>SANDY PLAYS OF SANDY MUDSTONE<br>UNIT VERY FINELY FLATTENED, LINDEN<br>MUDSTONE SILTY SLURRY, TO PO                                                            |            |         |    |        |        |  |  |  |
| 35.0    | 75.0  | DARK GREEN, FINE GRAINED, FINE GRAINED<br>MUDSTONE (LOW LINDEN) MUDSTONE<br>75' FINELY FLATTENED AT 12" TO 15"<br>MAY BE BILLY SEALS                                                                                   |            |         |    |        |        |  |  |  |
| 75.0    | 150.7 | CRACKED DARK GREEN MUDSTONE, SPOTTY<br>LINDEN, MUDSTONE → HIGH LINDEN<br>FINE MUDSTONE MUDSTONE<br>MUDSTONE, CRACKED SILTY MUDSTONE<br>POORLY FLATTENED @ 37°<br>118 3" SILTY at 10"<br>TOP FINE (MUDSTONE) (MUDSTONE) |            |         |    |        |        |  |  |  |
| 150.7   | 163.0 | MUDSTONE, GREEN AND TUFF MUDSTONE<br>SANDY MUDSTONE, SILTY MUDSTONE<br>MUDSTONE at 72" TO PO                                                                                                                           |            |         |    |        |        |  |  |  |
| 163.0   | 174.0 | DARK GREEN FINE GRAINED FINE GRAINED<br>MUDSTONE MUDSTONE (MUDSTONE)<br>" TO PO @ 57°                                                                                                                                  |            |         |    |        |        |  |  |  |

ASSESSMENT FILES  
 OFFICE  
 APR 24 1990  
 RECEIVED







LOCATION: 2770N 2750E  
 AZIM: 340° ELEV: 925'  
 DIP: -71° LENGTH: 466'  
 CORE SIZE: BQ  
 STARTED: Feb 18, 90  
 COMPLETED: Feb 20, 90 7 PM  
 PURPOSE: TEST GROUNDWATER AND M

# DRILL HOLE LOG

HOLE No. 0-90-3 PAGE NO. 1/4

## DIP TEST

| FOOTAGE | READING | CORRECT | FOOTAGE | READING | CORRECT |
|---------|---------|---------|---------|---------|---------|
| 466     | -60°    | -53°    |         |         |         |
|         |         |         |         |         |         |
|         |         |         |         |         |         |
|         |         |         |         |         |         |

PROPERTY: JAMES REID

CLAIM NO: TB 840792

SECTION:

LOGGED BY: D. KUMAR

DATE LOGGED: Feb 18, 1990

DRILLING CO: LONYEAR

ASSAYED BY: ACCUMASSAY

### CORE RECOVERY:

| FOOTAGE |       | DESCRIPTION                                                                                                                                                             | SAMPLE NO. | FOOTAGE |    | LENGTH | ASSAYS |  |  |  |  |  |  |  |
|---------|-------|-------------------------------------------------------------------------------------------------------------------------------------------------------------------------|------------|---------|----|--------|--------|--|--|--|--|--|--|--|
| FROM    | TO    |                                                                                                                                                                         |            | FROM    | TO |        |        |  |  |  |  |  |  |  |
| 0       | 27    | BUFF BUNDEN                                                                                                                                                             |            |         |    |        |        |  |  |  |  |  |  |  |
| 27      | 52.0  | CARBON TOP MED-COARSE GRAN MASSIVE<br>POORLY FOLIATED. CONTAINS MAFIC ICM<br>CREAMY PLAC. OIKRYLITES.<br>45-52 FINE GRAN, 1% FINE PD<br>37.0-41.0 BULLOZ @ 37°, MAFIC-U |            |         |    |        |        |  |  |  |  |  |  |  |
| 52.0    | 66.0  | PAK GREEN FINE GRANUL MASSIVE<br>AND<br>40-61.5 BROKEN CORE, FAULT?                                                                                                     |            |         |    |        |        |  |  |  |  |  |  |  |
| 66.0    | 88.0  | SPLITTED CARBONITE<br>67-68 FAULT ZONE 11 TO CONTACT AND                                                                                                                |            |         |    |        |        |  |  |  |  |  |  |  |
| 68.0    | 76.0  | MED VERT GREEN SILICIFIED FINE<br>GRAN MASSIVE AND.                                                                                                                     |            |         |    |        |        |  |  |  |  |  |  |  |
| 76.0    | 81.8  | CARBON MED-COARSE GRAN<br>BOTTOM CONTACT AT 35 TO CA.                                                                                                                   |            |         |    |        |        |  |  |  |  |  |  |  |
| 81.8    | 97.5  | INFANT GREENISH GREY, V.F. FAULTY<br>MASSIVE AND. RARE 2MM BANN<br>CREAMY MASSIVE SHA. @ 42°                                                                            |            |         |    |        |        |  |  |  |  |  |  |  |
| 97.5    | 108.0 | WELL SORTED MED GRANUL MASSIVE<br>WELL SORTED GRANUL CARBONITE 11 TO 100<br>@ 40° CONTACT WITH GREY SILICIFIED<br>MORE MAFIC & MAFIC MASSIVE AT DEPTH.                  |            |         |    |        |        |  |  |  |  |  |  |  |

MINERALOGICAL SURVEY  
 ASSESSMENT FILES  
 OFFICE  
 APR 24 1990  
 RECEIVED



LOCATION:

## DRILL HOLE LOG

HOLE No.

0-90-3

PAGE No.

2/4

AZIM:

ELEV:

DIP:

LENGTH:

CORE SIZE:

DIP TEST

PROPERTY:

STARTED:

COMPLETED:

PURPOSE:

CORE RECOVERY:

| FOOTAGE | READING | CORRECT | FOOTAGE | READING | CORRECT |
|---------|---------|---------|---------|---------|---------|
|         |         |         |         |         |         |
|         |         |         |         |         |         |
|         |         |         |         |         |         |
|         |         |         |         |         |         |

CLAIM NO:

SECTION:

LOGGED BY:

DATE LOGGED:

DRILLING CO:

ASSAYED BY:

| FOOTAGE |       | DESCRIPTION                                                                                                                                                                                                                                                                                                                                                                                                                                                                                                                                                           | SAMPLE NO. | FOOTAGE |       | LENGTH | ASSAYS  |  |  |  |  |
|---------|-------|-----------------------------------------------------------------------------------------------------------------------------------------------------------------------------------------------------------------------------------------------------------------------------------------------------------------------------------------------------------------------------------------------------------------------------------------------------------------------------------------------------------------------------------------------------------------------|------------|---------|-------|--------|---------|--|--|--|--|
| FROM    | TO    |                                                                                                                                                                                                                                                                                                                                                                                                                                                                                                                                                                       |            | FROM    | TO    |        | Au(ppb) |  |  |  |  |
| 123.0   | 237.5 | FAIRLY MASSIVE FINE GRAINED AND<br>UNIT CONTAINS NARROW SECTION OF<br>BROWN AND BILLY MINERAL WITH MODERATE<br>QUARTZ-CALCITE STRIPES SUB PARALLEL<br>TO FOL. NO PERVASIVE ALT.<br>3-10 1-3 MM WHITE VEINETS / FOOT.<br>138-140 STRONG CARB ALT. // 10 FOL<br>@ 55°<br>169.5-169.5 LIGHT GREY CRYSTAL ZONE<br>197. 6" BROWN CARB HEAVY FRACT ZONE<br>203-204 CRYSTAL ZONE TOP COR. @ 40°<br>205.5-207.5 CRYSTAL / LITHIC ZONE<br>209-210 QUARTZ VEIN @ 50° NARROW<br>210-213 STRONGLY BENDED, CARB/BROWN<br>MIXTURE @ 37°<br>224-226 STRONG BENCHING, MINOR CARB ZONE |            |         |       |        |         |  |  |  |  |
| 239.5   | 248.5 | SHEAR ZONE (?) STRONGLY BENDED, STRONG<br>SILICA / CARB ALT. SCATTERED QUARTZ VEINS<br>WITH MINOR P <sub>2</sub> O <sub>5</sub> , Fe, Ca                                                                                                                                                                                                                                                                                                                                                                                                                              | 186712     |         |       |        |         |  |  |  |  |
|         |       | 239.5-241.5 MOD CARB ALT. TOP 15" COLL.                                                                                                                                                                                                                                                                                                                                                                                                                                                                                                                               |            | 239.5   | 241.5 | 2.0    | 59      |  |  |  |  |
|         |       | 241.5-245.5 15% QZ, 10% CARB TO SANDS<br>// TO FOL @ 37° TOP                                                                                                                                                                                                                                                                                                                                                                                                                                                                                                          | 186713     | 241.5   | 245.5 | H.O    | 41      |  |  |  |  |
|         |       | 245.5-248.5 70% QUARTZ 3% P <sub>2</sub> O <sub>5</sub> Fe, Ca                                                                                                                                                                                                                                                                                                                                                                                                                                                                                                        | 186714     | 245.5   | 248.5 | 3.0    | 538     |  |  |  |  |
| 248.5   | 318.5 | GREEN-GREY FINE GRAINED FAIRLY<br>MASSIVE AND UNIT CONTAINS MINOR<br>QUARTZ & CARB STRIPES. MINOR<br>STRONG P <sub>2</sub> O <sub>5</sub>                                                                                                                                                                                                                                                                                                                                                                                                                             | 186715     |         |       |        |         |  |  |  |  |
|         |       | 248.5-251.5 MINOR CARB. 4" 50% P <sub>2</sub> O <sub>5</sub> DISS PO                                                                                                                                                                                                                                                                                                                                                                                                                                                                                                  |            | 248.5   | 251.5 | 3.0    | 83      |  |  |  |  |





LOCATION: 2150N 1750E

# DRILL HOLE LOG

HOLE No. 0-90-4 PAGE NO. 1/4

AZIM: 340° ELEV: 925'

DIP: -47° LENGTH: 286'

CORE SIZE: BQ

## DIP TEST

PROPERTY: JAMES REID

STARTED: Feb 21/90

COMPLETED: 22/90

PURPOSE: TEST GEODAYS ANOM.

| FOOTAGE | READING | CORRECT | FOOTAGE | READING | CORRECT |
|---------|---------|---------|---------|---------|---------|
|         |         |         |         |         |         |
|         |         |         |         |         |         |
|         |         |         |         |         |         |
|         |         |         |         |         |         |
|         |         |         |         |         |         |

CLAIM NO: 76 840792

SECTION:

LOGGED BY: D. H. WILSON

DATE LOGGED: Feb 24

DRILLING CO: LOWIFAR

ASSAYED BY: AGLUBASSAY

CORE RECOVERY: 45%

| FOOTAGE |       | DESCRIPTION                                                                                                                                                                                                                                                 | SAMPLE NO. | FOOTAGE |    | LENGTH | ASSAYS |  |  |  |  |  |  |
|---------|-------|-------------------------------------------------------------------------------------------------------------------------------------------------------------------------------------------------------------------------------------------------------------|------------|---------|----|--------|--------|--|--|--|--|--|--|
| FROM    | TO    |                                                                                                                                                                                                                                                             |            | FROM    | TO |        |        |  |  |  |  |  |  |
| 0       | 4.3   | OVERBORDEN                                                                                                                                                                                                                                                  |            |         |    |        |        |  |  |  |  |  |  |
| 4.3     | 57.0  | CASSIO. MEDIUM GRAINED DARK GREEN<br>FINE GRAINED 55-57 BROWNISH                                                                                                                                                                                            |            |         |    |        |        |  |  |  |  |  |  |
| 57      | 119.5 | MEDIUM GRAIN FINE GRAIN WELL BOUNDED<br>MID. GRAINED BROWN AND BUFF SLIGHTLY<br>SLIC.<br>61-63 MEDIUM GRAIN MEDIUM GRAIN<br>BUFF<br>75-77.5 MEDIUM GRAIN MEDIUM GRAIN<br>BUFF @ 37°<br>82-83 LIGHT GREEN BROWN<br>99.0 DEP 45<br>114.0 5" MEDIUM GRAIN BUFF |            |         |    |        |        |  |  |  |  |  |  |
| 119.5   | 135.5 | MEDIUM GREENISH GREEN FAIRLY MASSIVE<br>FINE GRAINED MEDIUM GRAIN<br>STAINLESS 11 TO 12. A 42-47°<br>MEDIUM GRAIN MEDIUM GRAIN                                                                                                                              |            |         |    |        |        |  |  |  |  |  |  |
| 135.5   | 139.0 | LIGHT GREEN MEDIUM GRAIN BUFF                                                                                                                                                                                                                               |            |         |    |        |        |  |  |  |  |  |  |
| 139.0   | 142   | DARK GREEN GREEN MASS FINE AND BUFF                                                                                                                                                                                                                         |            |         |    |        |        |  |  |  |  |  |  |
| 142     | 145.5 | LIGHT GREEN BROWN WELL BOUNDED TO BROWN<br>30 LAYERS                                                                                                                                                                                                        |            |         |    |        |        |  |  |  |  |  |  |
| 145.5   | 158.0 | MED. GREEN-LIGHT GREEN FINE GRAIN MASSIVE<br>BUFF MEDIUM GRAIN DEP 45 FINE GRAIN<br>OR STAINLESS                                                                                                                                                            |            |         |    |        |        |  |  |  |  |  |  |

ONTARIO GEOLOGICAL SURVEY  
ASSESSMENT FILES  
OFFICE  
APR 24 1990  
RECEIVED



LOCATION: \_\_\_\_\_  
 AZIM: \_\_\_\_\_ ELEV: \_\_\_\_\_  
 DIP: \_\_\_\_\_ LENGTH: \_\_\_\_\_  
 CORE SIZE: \_\_\_\_\_

# DRILL HOLE LOG

HOLE No. 0-70-4 PAGE NO. 3/4

## DIP TEST

PROPERTY: \_\_\_\_\_

STARTED: \_\_\_\_\_  
 COMPLETED: \_\_\_\_\_  
 PURPOSE: \_\_\_\_\_  
 CORE RECOVERY: \_\_\_\_\_

| FOOTAGE | READING | CORRECT | FOOTAGE | READING | CORRECT |
|---------|---------|---------|---------|---------|---------|
|         |         |         |         |         |         |
|         |         |         |         |         |         |
|         |         |         |         |         |         |
|         |         |         |         |         |         |
|         |         |         |         |         |         |

CLAIM NO: \_\_\_\_\_  
 SECTION: \_\_\_\_\_  
 LOGGED BY: \_\_\_\_\_  
 DATE LOGGED: \_\_\_\_\_  
 DRILLING CO: \_\_\_\_\_  
 ASSAYED BY: \_\_\_\_\_

| FOOTAGE |                               | DESCRIPTION                                                                                                                                                                                                                                  | SAMPLE NO. | FOOTAGE |       | LENGTH | ASSAYS   |  |  |  |
|---------|-------------------------------|----------------------------------------------------------------------------------------------------------------------------------------------------------------------------------------------------------------------------------------------|------------|---------|-------|--------|----------|--|--|--|
| FROM    | TO                            |                                                                                                                                                                                                                                              |            | FROM    | TO    |        | Au (ppb) |  |  |  |
| 216     | 232.0                         | MEDIUM GRAY - GREEN, FAIRLY MASSIVE<br>AND BUFF. MOD - STRONG CARB. MAT<br>AS 5-9.4.7 CARB. MATS - LENSES<br>11 TO FOL. @ 60°                                                                                                                |            |         |       |        |          |  |  |  |
|         | 231.0 - 232.0                 | QUARTZ VEIN 2% TO ABOVE<br>CONTACTS AND WHISKEY CHARACTERIZED INCLUDED<br>WELL BOUNDED.                                                                                                                                                      |            |         |       |        |          |  |  |  |
|         | 232.0 - 233.0                 | STRONG CARB. MAT. 3% TO 10% TO 90                                                                                                                                                                                                            | 186720     | 231.0   | 233.0 | 2.0    | 65       |  |  |  |
| 233.0   | 250.6                         | LIGHT GRAY MOTTLED (?) ASH BUFF UNIT<br>FINE GRAINED, USUALLY WELL BANNED<br>CONTAINS SEVERAL NARROW QUARTZ VEINS<br>AND SILICIFIED ZONES CONTAINING 2-5%<br>Fe, 2% Pt AND LOCAL HEAVY DISSEMINATION<br>OF FINE PD AND WHISKEY P. 11 TO 14MM |            |         |       |        |          |  |  |  |
|         | 233.0 - 237.8                 | FINE GRAIN MASSIVE<br>MINOR WHISKEY P., 3% CARB.                                                                                                                                                                                             | 186721     | 233.0   | 237.8 | 4.8    | 45       |  |  |  |
|         | 237.8 - 240.0 - 237.8 - 240.0 | GR. VEIN @ 60°<br>5% P., 1% Pt. 10% VEIN CONTACTS.                                                                                                                                                                                           | 186722     | 237.8   | 240.0 | 2.2    | 13       |  |  |  |
|         | 238.0 - 240.0                 | 5% DISS. LAM. P.                                                                                                                                                                                                                             | 186723     | 240     | 242.0 | 2.0    | 13       |  |  |  |
|         | 240.0 - 242.0                 | WELL LAM. T. P.                                                                                                                                                                                                                              |            |         |       |        |          |  |  |  |
|         | 242.0 - 244.7                 | 10% DISS. LAM. WHISKEY P. 10%<br>MOTTLED ASH 1" QZ VEIN @ 60°                                                                                                                                                                                | 186724     | 242.0   | 244.7 | 2.7    | 43.5     |  |  |  |
|         | 244.7 - 247.5                 | FINE MASSIVE DAC. GR. BUFF<br>10% FINE BIO. SILICIFIED                                                                                                                                                                                       | 186725     | 244.7   | 247.5 | 2.8    | 45       |  |  |  |
|         | 247.5 - 250.6                 | LOCALLY 10% P. FINE DISS. 1"<br>WELL LAM SILIC. 5-7% P.                                                                                                                                                                                      | 186726     | 247.5   | 250.6 | 3.0    | 45       |  |  |  |

LOCATION:  
 AZIM:  
 DIP:  
 STARTED:  
 COMPLETED:  
 PURPOSE:  
 CORE RECOVERY:

ELEV:  
 LENGTH:  
 CORE SIZE:

# DRILL HOLE LOG

HOLE No. 0-90-4 PAGE NO. 4

## DIP TEST

| FOOTAGE | READING | CORRECT | FOOTAGE | READING | CORRECT |
|---------|---------|---------|---------|---------|---------|
|         |         |         |         |         |         |
|         |         |         |         |         |         |
|         |         |         |         |         |         |
|         |         |         |         |         |         |

PROPERTY:  
 CLAIM NO:  
 SECTION:  
 LOGGED BY:  
 DATE LOGGED:  
 DRILLING CO:  
 ASSAYED BY:

| FOOTAGE |       | DESCRIPTION                                                                                                                                                                                                                                                                      | SAMPLE NO. | FOOTAGE |       | LENGTH | ASSAYS   |  |  |  |  |
|---------|-------|----------------------------------------------------------------------------------------------------------------------------------------------------------------------------------------------------------------------------------------------------------------------------------|------------|---------|-------|--------|----------|--|--|--|--|
| FROM    | TO    |                                                                                                                                                                                                                                                                                  |            | FROM    | TO    |        | Au (ppb) |  |  |  |  |
| 250.5   | 257.5 | MASSIVE SULPH ZONE.<br>DARK GREY-BLACK SEMI-SILIC. CHARD<br>CONTAINS MASSIVE TO BANNED P. & P. TYP.<br>AS CONFORMABLE BEDS & WHIPS. MINOR<br>CARB ACT.<br>-250.5-251. 40% P. 3% P <sub>4</sub><br>251.0-252.5 15% P. 3-4% P <sub>4</sub><br>252.5-257.5 15% P. 1% P <sub>4</sub> | 186727     | 250.5   | 252.5 | 3.5    | 16       |  |  |  |  |
|         |       |                                                                                                                                                                                                                                                                                  | 186728     | 253.5   | 257.5 | 4.0    | 7        |  |  |  |  |
| 257.5   | 286.0 | FINE GRAN. MED. GRN. GREY POOR BANNED<br>AND-MC. TUFF MINOR CARB ACT. TO P.<br>AS WHIPS 11 TO FOL AT 50°<br>257.5-262.5 3-4% OISE WHISP P.<br>262.5-2680 1-2% OISE " "                                                                                                           | 146724     | 257.5   | 262.5 | 5.0    | 5        |  |  |  |  |
|         |       |                                                                                                                                                                                                                                                                                  | 186730     | 262.5   | 2680  | 5.5    | 7        |  |  |  |  |

*AGraham*  
 per DL Kwan

LOCATION: 1450 E 2150N

# DRILL HOLE LOG

HOLE No. 0-90-5 PAGE NO 113

AZIM: 340° ELEV: 925  
 DIP: -71°30' LENGTH: 446  
 CORE SIZE: BR

## DIP TEST

PROPERTY: JAMES REID

STARTED: Feb. 22/90  
 COMPLETED: Feb. 24/90  
 PURPOSE: TEST GEOLYS ANOM.

| FOOTAGE | READING | CORRECT | FOOTAGE | READING | CORRECT |
|---------|---------|---------|---------|---------|---------|
| 446     | 71.30   | 65.0    |         |         |         |
|         |         |         |         |         |         |
|         |         |         |         |         |         |
|         |         |         |         |         |         |

CLAIM NO: 78 840792

SECTION:

LOGGED BY: D. KUMAN

DATE LOGGED: Feb. 24

DRILLING CO: LOWYEAR.

ASSAYED BY: ACCURASSAY

CORE RECOVERY:

| FOOTAGE |       | DESCRIPTION                                                                                                                                                                                                                                            | SAMPLE NO. | FOOTAGE |    | LENGTH | ASSAYS |  |  |  |  |  |  |  |
|---------|-------|--------------------------------------------------------------------------------------------------------------------------------------------------------------------------------------------------------------------------------------------------------|------------|---------|----|--------|--------|--|--|--|--|--|--|--|
| FROM    | TO    |                                                                                                                                                                                                                                                        |            | FROM    | TO |        |        |  |  |  |  |  |  |  |
| 0       | 37    | OVER BURDEN                                                                                                                                                                                                                                            |            |         |    |        |        |  |  |  |  |  |  |  |
| 37      | 91    | GABBRO DARK GREEN, COARSE MINERAL<br>UNIT FINE REFINED, SOILIAL PLACED<br>MARE FLO OILY SLIVER.<br>39-40.5 RTZ VEIN, MAGNETIC COIL ON FW<br>62-64 SHEARING at 5°.                                                                                      |            |         |    |        |        |  |  |  |  |  |  |  |
| 91.0    | 114.5 | MED. GREY, FINE GRAIN MASSIVE, ANOM-DOL.<br>TUFF. FOL at 47° 11 TO BEDDING.                                                                                                                                                                            |            |         |    |        |        |  |  |  |  |  |  |  |
| 114.5   | 117.9 | MED. GREY MED GRAIN SHEARED GABBRO<br>FOL at 25°                                                                                                                                                                                                       |            |         |    |        |        |  |  |  |  |  |  |  |
| 117.2   | 208.0 | INTERBEDDED MED. GREY GREEN AND<br>TUFF O LIGHT GREY DOLIC TUFFS. MINOR<br>LITHIC RICH LAYERS, LOCAL QUARTZ O CARB<br>FILLING, WELL FOLIATED, LOCALLY WELL<br>LAMINATED UNITS 2.5' THICK<br>159 BEDS 25°<br>178° " 30°<br>204-205 RTZ VEIN 3 GRAIN COP |            |         |    |        |        |  |  |  |  |  |  |  |
| 208.0   | 292.0 | MEDIUM-DARK GREEN, FINE GRAIN MASSIVE<br>ANDESITE, UNIT CONTACTS UNMARKED<br>.5-2" BANDS OF SOFTEN OLIVE GREEN<br>DOLIC AT ALL ANGLES, MAY BE ALLOW SELF.<br>UNIT HOORLY FOLIATED.<br>264 1.5' SHEARED ZONE, RTZ HEALING T-PO                          |            |         |    |        |        |  |  |  |  |  |  |  |

ONTARIO GEOLOGICAL SURVEY  
 ASSESSMENT FILES  
 OFFICE  
 APR 24 1990  
 RECEIVED



LOCATION:  
 AZIM:  
 DIP:  
 STARTED:  
 COMPLETED:  
 PURPOSE:  
 CORE RECOVERY:

ELEV:  
 LENGTH:  
 CORE SIZE:

# DRILL HOLE LOG

HOLE No. 0-90-5 PAGE NO 2/3

## DIP TEST

PROPERTY:  
 CLAIM NO:  
 SECTION:  
 LOGGED BY:  
 DATE LOGGED:  
 DRILLING CO:  
 ASSAYED BY:

| FOOTAGE | READING | CORRECT | FOOTAGE | READING | CORRECT |
|---------|---------|---------|---------|---------|---------|
|         |         |         |         |         |         |
|         |         |         |         |         |         |
|         |         |         |         |         |         |
|         |         |         |         |         |         |
|         |         |         |         |         |         |

| FOOTAGE |       | DESCRIPTION                                                                                                                                                                                                                                 | SAMPLE NO.                 | FOOTAGE             |                     | LENGTH            | ASSAYS        |  |  |  |  |  |  |  |
|---------|-------|---------------------------------------------------------------------------------------------------------------------------------------------------------------------------------------------------------------------------------------------|----------------------------|---------------------|---------------------|-------------------|---------------|--|--|--|--|--|--|--|
| FROM    | TO    |                                                                                                                                                                                                                                             |                            | FROM                | TO                  |                   |               |  |  |  |  |  |  |  |
|         |       | 178.0 1.5" QTZ VENE TO CARB. MARG.                                                                                                                                                                                                          |                            |                     |                     |                   |               |  |  |  |  |  |  |  |
|         |       | 292.0 CONTACT 57°                                                                                                                                                                                                                           |                            |                     |                     |                   |               |  |  |  |  |  |  |  |
| 292     | 304.6 | MEDIUM-LIGHT GREY WELL BEDDED DACITIC ASH TUFF MINOR CRYSTAL AND MINOR BIGH SECTIONS. BEDS @ 40° 296-304 MIN CARB. ALT. IN STRINGERS 300.0-302. MINOR QTZ VEIN @ 1-2" STRONG CARB. ALT. 1 1/2% Py.                                          |                            |                     |                     |                   |               |  |  |  |  |  |  |  |
| 304.6   | 323.5 | DARK GREY GREEN MASS. AND. POORLY FOL. @ 37°                                                                                                                                                                                                |                            |                     |                     |                   |               |  |  |  |  |  |  |  |
| 323.5   | 340.0 | LIGHT GREY WELL LAM DACITIC ASH TUFF BEDS // TO FOL. @ 37° 336. BED 28°, 339.0 2MM Py SAND.                                                                                                                                                 |                            |                     |                     |                   |               |  |  |  |  |  |  |  |
| 340.0   | 355.8 | DARK GREY GREEN, FAIRLY MASSIVE AND. TUFF, RARE 2" MED GREY DACITIC ASH SAND.                                                                                                                                                               |                            |                     |                     |                   |               |  |  |  |  |  |  |  |
| 355.8   | 389.0 | MIX LIGHT GREY FAIRLY MASSIVE POORLY BEDDED DAC. ASH TUFF. MINOR DARK GREEN AND. LAYERS. UNIT CONTAINS MINOR SILIC. AND 3% Py A Lamination of FINE LAMS. // TO BEDDING. 375-380 3% Py @ 37° 380.0-384.0 TR Py. AND. SAND. 384.0-389.0 1% Py | 186731<br>186732<br>180733 | 375<br>380<br>384.0 | 380<br>384<br>389.0 | 5.0<br>4.0<br>5.0 | 6<br>45<br>45 |  |  |  |  |  |  |  |

LOCATION: \_\_\_\_\_  
 AZIM: \_\_\_\_\_ ELEV: \_\_\_\_\_  
 DIP: \_\_\_\_\_ LENGTH: \_\_\_\_\_  
 CORE SIZE: \_\_\_\_\_  
 STARTED: \_\_\_\_\_  
 COMPLETED: \_\_\_\_\_  
 PURPOSE: \_\_\_\_\_  
 CORE RECOVERY: \_\_\_\_\_

# DRILL HOLE LOG

HOLE No. 0905 PAGE NO. 3/3

## DIP TEST

| FOOTAGE | READING | CORRECT | FOOTAGE | READING | CORRECT |
|---------|---------|---------|---------|---------|---------|
|         |         |         |         |         |         |
|         |         |         |         |         |         |
|         |         |         |         |         |         |
|         |         |         |         |         |         |
|         |         |         |         |         |         |

PROPERTY: \_\_\_\_\_  
 CLAIM NO: \_\_\_\_\_  
 SECTION: \_\_\_\_\_  
 LOGGED BY: \_\_\_\_\_  
 DATE LOGGED: \_\_\_\_\_  
 DRILLING CO: \_\_\_\_\_  
 ASSAYED BY: \_\_\_\_\_

| FOOTAGE |       | DESCRIPTION                                                                                                                                                                                          | SAMPLE NO. | FOOTAGE |       | LENGTH | ASSAYS   |  |  |  |
|---------|-------|------------------------------------------------------------------------------------------------------------------------------------------------------------------------------------------------------|------------|---------|-------|--------|----------|--|--|--|
| FROM    | TO    |                                                                                                                                                                                                      |            | FROM    | TO    |        | Au (ppb) |  |  |  |
| 389.0   | 402.0 | MASSIVE SULPH. HORIZON.<br>60-5% Py/Py at 70-80 AS MASSIVE<br>FINE GRAIN TURBETIC SECTIONS TO WHISPY<br>LAYERS IN A FINE GRAIN DARK GREY-BLACK<br>SILIC. MATRIX.                                     |            |         |       |        |          |  |  |  |
| 389.0   | 392.0 | 20% overall 391-391.5 75%                                                                                                                                                                            | 186734     | 389     | 392   | 3.0    | 10       |  |  |  |
| 392.0   | 396.0 | 10% AS THICK WHISPY LAYERS<br>FOLL. READING @ 37°                                                                                                                                                    | 186735     | 392     | 396   | 4.0    | 45       |  |  |  |
| 396.0   | 398.0 | 2% Po                                                                                                                                                                                                | 186736     | 396     | 398   | 2.0    | 33       |  |  |  |
| 398.0   | 402.0 | 10-12% Po 3% Py                                                                                                                                                                                      | 186737     | 398.0   | 402.0 | 4.0    | 45       |  |  |  |
| 402.0   | 406.0 | MIXED MED. GREY - LIGHT GREY AND-DK<br>TUFF. LOCALLY WELL LAMINATED<br>OCCASSIONAL CONCL. OF LIGHT BROWN<br>SCTALS POSS. GARNETS (?). MINOR<br>PO / Py AS FINE SANDS - WHISPS.<br>402-406. Tr Po Py. | 186738     | 402.0   | 406.0 | 4.0    | 45       |  |  |  |

*D. L. Kerton*  
 BY D. L. Kerton

LOCATION: 0100 E 2120 W

# DRILL HOLE LOG

HOLE No. 0-90-6A PAGE NO. 1/1

AZIM: 340° ELEV: 925'

DIP: -46° LENGTH: 20'

CORE SIZE: 60 CASING

STARTED: Feb 25 190

COMPLETED: Feb 25 190

PURPOSE: TEST GEOPHY

CORE RECOVERY:

## DIP TEST

| FOOTAGE | READING | CORRECT | FOOTAGE | READING | CORRECT |
|---------|---------|---------|---------|---------|---------|
|         |         |         |         |         |         |
|         |         |         |         |         |         |
|         |         |         |         |         |         |
|         |         |         |         |         |         |
|         |         |         |         |         |         |

PROPERTY: JAMES REID.

CLAIM NO: JB 840792

SECTION:

LOGGED BY: D. LIL.

DATE LOGGED:

DRILLING CO: LONLYEAR

ASSAYED BY:

| FOOTAGE                                                                                                |     | DESCRIPTION                                   | SAMPLE NO. | FOOTAGE |    | LENGTH | ASSAYS |  |  |  |  |  |  |
|--------------------------------------------------------------------------------------------------------|-----|-----------------------------------------------|------------|---------|----|--------|--------|--|--|--|--|--|--|
| FROM                                                                                                   | TO  |                                               |            | FROM    | TO |        |        |  |  |  |  |  |  |
| 0                                                                                                      | 20' | CASING BROKE OFF, LOST 10' SHOE<br>ABANDONED. |            |         |    |        |        |  |  |  |  |  |  |
| <p><i>R. Graham</i><br/><i>D.L. Kuron</i></p> <p>NO CREDIT ALLOWED</p> <p>HOLE MUST BE 25' OR MORE</p> |     |                                               |            |         |    |        |        |  |  |  |  |  |  |

ONTARIO GEOLOGICAL SURVEY  
 ASSESSMENT FILES  
 OFFICE  
 APR 24 1990  
 RECEIVED



LOCATION: 0100E 2+20W

# DRILL HOLE LOG

HOLE No. 0-90-7 PAGE NO 1/3

AZIM: 340° ELEV: 925'  
 DIP: -66° LENGTH: 391'  
 CORE SIZE: BQ

## DIP TEST

PROPERTY: JAMES REID

| FOOTAGE | READING | CORRECT | FOOTAGE | READING | CORRECT |
|---------|---------|---------|---------|---------|---------|
| 391     | -66°    | -58°    |         |         |         |
|         |         |         |         |         |         |
|         |         |         |         |         |         |
|         |         |         |         |         |         |

CLAIM NO: TB 651377  
 SECTION:  
 LOGGED BY: D.K.  
 DATE LOGGED: Feb 28/90  
 DRILLING CO: LOWEY ASS.  
 ASSAYED BY: ACCURASSAY

STARTED: Feb 26/90  
 COMPLETED: Feb 28/90  
 PURPOSE: TEST GRAPHIS

### CORE RECOVERY:

| FOOTAGE |       | DESCRIPTION                                                                                                                                                                                                                                                                                                                                                                                                                                                                    | SAMPLE NO. | FOOTAGE |    | LENGTH | ASSAYS |  |  |  |  |  |  |
|---------|-------|--------------------------------------------------------------------------------------------------------------------------------------------------------------------------------------------------------------------------------------------------------------------------------------------------------------------------------------------------------------------------------------------------------------------------------------------------------------------------------|------------|---------|----|--------|--------|--|--|--|--|--|--|
| FROM    | TO    |                                                                                                                                                                                                                                                                                                                                                                                                                                                                                |            | FROM    | TO |        |        |  |  |  |  |  |  |
| 0       | 60    | OVERLAP/ CASING (GNEISS BLDS)                                                                                                                                                                                                                                                                                                                                                                                                                                                  |            |         |    |        |        |  |  |  |  |  |  |
| 60      | 71.0  | DARK GREEN, MASSIVE POORLY FOLIATED, THICKLY BEDDED AND. TUFF FOLIO 37°                                                                                                                                                                                                                                                                                                                                                                                                        |            |         |    |        |        |  |  |  |  |  |  |
| 71.0    | 104.0 | MED. BROWNISH GREEN, SLIGHTLY WEATHERED LOCALLY SHEARED ANDI-PAC. TUFF, WELL LAM. LOCALLY COARSER GRAINED, LITTLE BIT 1-2mm. RECOVERY 75% 96.5 & 2" MVD SAM.                                                                                                                                                                                                                                                                                                                   |            |         |    |        |        |  |  |  |  |  |  |
| 104.0   | 171.0 | MEDIUM GREEN-GREY, FINE GRAIN, MASSIVE AND. TUFF. MODERATE OVERALL CARB. ALT. AT CARBONATE STRAINERS 5% OVERALL. LOCAL CONG. AT AREOLATED ZONES. MINOR SHEARING. POORLY FOL.<br>111.5 .8' SLIGHTLY BX, CARBONATE HEAVY.<br>114-116.5 SHEAR MINOR 1" VEIN ATZ VEINS STRONG CHLORITE ALT. BARREN<br>119.7 .7" ATZ VEIN<br>134 ALKALINE 1"<br>154-154.3 CARBONATE VEIN, GRANULAR TO WEATHERED PO<br>160-160.8 GRANULAR CALCITE T-PO<br>164-166. 1-2" FRACT. FILLING CU. FOL @ 30° |            |         |    |        |        |  |  |  |  |  |  |
| 171.0   | 209.5 | MEDIUM GREY WELL LAM. AND. TUFF. MODERATE PERVASIVE CARB. ALT. AS LOW FORMABLE 1mm BANDS @ 30°. LOCAL CONCENTRATIONS OF 3mm CONG. SUBPAR. BORN BLAND LATHES.                                                                                                                                                                                                                                                                                                                   |            |         |    |        |        |  |  |  |  |  |  |

ONTARIO GEOLOGICAL SURVEY  
 ASSESSMENT FILES  
 OFFICE  
 APR 24 1990  
 RECEIVED





LOCATION: 0+50 N 2100E

# DRILL HOLE LOG

HOLE No. 0-90-8 PAGE NO. 1/3

AZIM: 330° ELEV: 925'

DIP: -53° LENGTH: 411'

CORE SIZE: 80

## DIP TEST

PROPERTY: JAMES REID.

STARTED: Feb 28/90

COMPLETED: Mar 3/90

PURPOSE: EST SOUTHERN ID ANOM

| FOOTAGE | READING | CORRECT | FOOTAGE | READING | CORRECT |
|---------|---------|---------|---------|---------|---------|
| 406     | -52.    | -43.30  |         |         |         |
|         |         |         |         |         |         |
|         |         |         |         |         |         |
|         |         |         |         |         |         |

CLAIM NO: TB 651377

SECTION:

LOGGED BY: O.K.

DATE LOGGED: MAR 2, 3/90

DRILLING CO: LONGYEAR

ASSAYED BY: ACCURASSAY

CORE RECOVERY:

| FOOTAGE |       | DESCRIPTION                                                                                                                                                                                                                                                                                                                                                                                                                                                                                                                         | SAMPLE NO. | FOOTAGE |    | LENGTH | ASSAYS |  |  |  |
|---------|-------|-------------------------------------------------------------------------------------------------------------------------------------------------------------------------------------------------------------------------------------------------------------------------------------------------------------------------------------------------------------------------------------------------------------------------------------------------------------------------------------------------------------------------------------|------------|---------|----|--------|--------|--|--|--|
| FROM    | TO    |                                                                                                                                                                                                                                                                                                                                                                                                                                                                                                                                     |            | FROM    | TO |        |        |  |  |  |
| 0       | 54    | OVERLAPED. BOTTOM 12' LARGE (4')<br>GNEISS, BIOTITE ENCLAVES.                                                                                                                                                                                                                                                                                                                                                                                                                                                                       |            |         |    |        |        |  |  |  |
| 54      | 60    | MED GREY MED-FINE GRAIN WELL<br>LAM. STRONGLY FOLIATED AND TUFF<br>STRONG CARB. ALT. BEDS 117-120 @ 35°                                                                                                                                                                                                                                                                                                                                                                                                                             |            |         |    |        |        |  |  |  |
| 60      | 211.5 | MEDIUM-GREEN GREY MASSIVE, FINE-VFG.<br>AND. RARE 1-2" EPIDOTE RICH BANDS<br>AT 114', POSS. ALLOW SEVERE. UNIT<br>IS POORLY FOLIATED. CONTAINS MINOR<br>BLEACHED ZONES, MINOR CARB STRAINERS<br>AND NARROW SHEAR ZONES.<br>69.0 1.5" CARB VEIN. AT 35°<br>110-112 SHEAR ? WELL HEALED BY CARBONATE<br>LAYERS TO SCHISTOSE AT 35° MINOR<br>SERICITE.<br>126 MINOR CP. P. IN CARB BLOB.<br>156.5-158 MARG. SUPPORTED XTAL TUFF.<br>170 FOL 42°<br>190-192 LAM. LIGHT GREY DAC. ASHTUF 045<br>198-198.5 DYKE MED GMIN, RZFLD. 15% 910. |            |         |    |        |        |  |  |  |
| 211.5   | 219.2 | WELL LAM BROWN-GREEN CARB RICH<br>DAC. TUFF, LAM @ 53°                                                                                                                                                                                                                                                                                                                                                                                                                                                                              |            |         |    |        |        |  |  |  |
| 219.2   | 346.5 | DARK GREY GREEN FINE GMIN MASS<br>AND. POORLY FOL.<br>223-224 DAC. ASH TUFF<br>230-230.8 QFP DYKE                                                                                                                                                                                                                                                                                                                                                                                                                                   |            |         |    |        |        |  |  |  |

ONTARIO GEOLOGICAL SURVEY  
ASSESSMENT FIELD  
OFFICE  
APR 24 1990  
RECEIVED







DOCUMENT NO  
W9004-14



52P09SE0003 18 RICH LAKE

900

Refer to Sections 76 and 77, the Mining Act for assessment work requirements and the reverse side of this form for table of information.

W9004-147

Mining Act

Report of Work

|                                                                                                                   |                                                                                      |
|-------------------------------------------------------------------------------------------------------------------|--------------------------------------------------------------------------------------|
| Name and Address of Recorded Holder<br><b>ROBERT JAMES REID</b><br>806-850 W. Hastings St., Vancouver, BC V6C 1E1 | Prospector's Licence No.<br><b>A 48161</b><br>Telephone No.<br><b>(604) 669-3330</b> |
|-------------------------------------------------------------------------------------------------------------------|--------------------------------------------------------------------------------------|

| Mining Division<br>Township or Area<br>Municipal Assessment Credits Claimed<br>Type of Work Performed (check one only) | Mining Claim |        |               | Mining Claim |        |               | Mining Claim |        |               |
|------------------------------------------------------------------------------------------------------------------------|--------------|--------|---------------|--------------|--------|---------------|--------------|--------|---------------|
|                                                                                                                        | Prefix       | Number | Work Days Cr. | Prefix       | Number | Work Days Cr. | Prefix       | Number | Work Days Cr. |
| <b>RICH LAKE G-388</b><br>2830.75                                                                                      | TB           | 840781 | 37.80         | TB           | 840791 | 72.74         |              |        |               |
|                                                                                                                        | TB           | 840782 | 37.80         | TB           | 840792 | 37.80         |              |        |               |
|                                                                                                                        | TB           | 840783 | 37.80         | TB           | 840793 | 37.80         |              |        |               |
|                                                                                                                        | TB           | 840784 | 37.80         | TB           | 840794 | 29.80         |              |        |               |
| Manual Work                                                                                                            | TB           | 840785 | 72.74         | TB           | 740028 | 17.80         |              |        |               |
| Shaft Sinking Drifting or other Lateral Work                                                                           | TB           | 840786 | 72.74         | TB           | 740029 | 17.80         |              |        |               |
| Mechanical equipment                                                                                                   | TB           | 840787 | 72.74         |              |        |               |              |        |               |
| Power Stripping other than Manual (maximum credit allowed - 100 days per claim)                                        | TB           | 840788 | 72.74         |              |        |               |              |        |               |
| Diamond or other Core drilling                                                                                         | TB           | 840789 | 72.74         |              |        |               |              |        |               |
| Core Specimens                                                                                                         | TB           | 840790 | 72.74         |              |        |               |              |        |               |

|                                                                |                                        |                                     |                                                             |
|----------------------------------------------------------------|----------------------------------------|-------------------------------------|-------------------------------------------------------------|
| Dates when work was performed<br>From: FEB. 7/90 To: MAR. 3/90 | Total No. of Days Performed<br>2830.75 | Total No. of Days Claimed<br>801.38 | Total No. of Days to be Claimed at a Future Date<br>2029.37 |
|----------------------------------------------------------------|----------------------------------------|-------------------------------------|-------------------------------------------------------------|

| the work was performed on Mining Claim(s):<br>Indicate no. of days performed on each claim.<br>(See note No. 1 on reverse side) | Mining Claim | No. of Days | Mining Claim | No. of Days | Mining Claim | No. of Days | Mining Claim | No. of Days |
|---------------------------------------------------------------------------------------------------------------------------------|--------------|-------------|--------------|-------------|--------------|-------------|--------------|-------------|
|                                                                                                                                 | TB651376     | 411.0       | TB840792     | 1612.75     | TB840793     | 812.0       |              |             |

Required Information eg. type of equipment, Names, Addresses, etc. (See Table on reverse side)  
If space below is insufficient, attach schedules with required information and location sketches

USED LONGYEAR 38 DRILL. DRILLING DONE BY LONGYEAR CANADA LTD.,  
1111 MAIN ST. WEST.  
P.O. BOX 350  
NORTH BAY, ONTARIO  
P1B 0H6

WORK SUPERVISED BY J.C. GRAHAM OF GRAHAM GROND GEOCONSULTANTS LTD.  
2729 Yale St.  
Vancouver, BC  
V5K 1C4

ONTARIO GEOLOGICAL SURVEY  
ASSESSMENT FILES  
OFFICE  
  
APR 24 1990  
  
RECEIVED

Declaration of Beneficial Interest \* (See Note No. 2 on reverse side)

I hereby certify that, at the time the work was performed, the claims covered in this report were recorded in the current recorded holder's name or held under a beneficial interest of the current recorded holder.

|            |                                      |
|------------|--------------------------------------|
| Date       | Recorded Holder or Agent (Signature) |
| Mar. 23/90 | J.C. Graham                          |

Declaration Verifying Report of Work

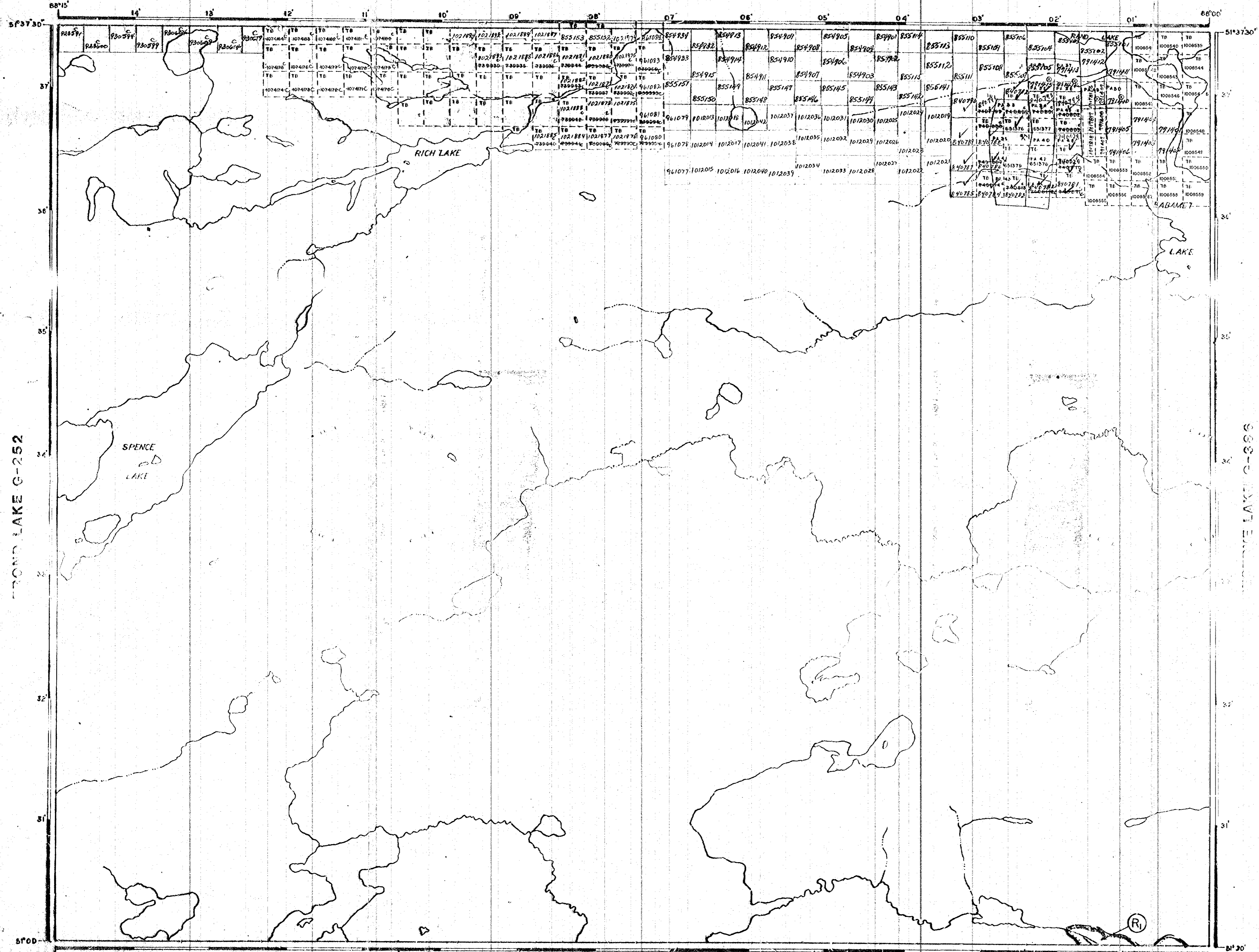
I hereby certify that I have a personal and intimate knowledge of the facts set forth in the Report of Work annexed hereto having performed the work witnessed same during and/or after its completion and the annexed report is true.

Name and Address of Person Certifying  
Campbell Graham, 2729 Yale St., Vancouver, BC, V5K 1C4

|                |            |                          |
|----------------|------------|--------------------------|
| Telephone No.  | Date       | Certified By (Signature) |
| (604) 255-8280 | Mar. 23/90 | J.C. Graham              |

| Office Use Only                                                                                                                                                                                                                           | Received Stamp |              |           |        |              |              |          |            |             |                                                                      |
|-------------------------------------------------------------------------------------------------------------------------------------------------------------------------------------------------------------------------------------------|----------------|--------------|-----------|--------|--------------|--------------|----------|------------|-------------|----------------------------------------------------------------------|
| <table border="1"> <tr> <td>8651376</td> <td>411 days</td> <td>Bal. 3456</td> </tr> <tr> <td>840792</td> <td>1574.95 days</td> <td>Bal. 2425.05</td> </tr> <tr> <td>3 840793</td> <td>774.2 days</td> <td>Bal. 3225.8</td> </tr> </table> | 8651376        | 411 days     | Bal. 3456 | 840792 | 1574.95 days | Bal. 2425.05 | 3 840793 | 774.2 days | Bal. 3225.8 | <p>RECEIVED<br/>NORTH BAY<br/>DIVISION<br/>APR 24 1990<br/>12 35</p> |
| 8651376                                                                                                                                                                                                                                   | 411 days       | Bal. 3456    |           |        |              |              |          |            |             |                                                                      |
| 840792                                                                                                                                                                                                                                    | 1574.95 days   | Bal. 2425.05 |           |        |              |              |          |            |             |                                                                      |
| 3 840793                                                                                                                                                                                                                                  | 774.2 days     | Bal. 3225.8  |           |        |              |              |          |            |             |                                                                      |

OPIKEIGAN LAKE G-361



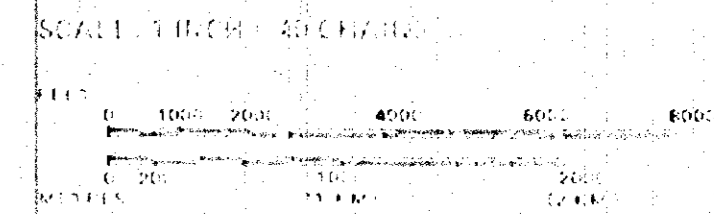
REFERENCES

LEGEND

- HIGHWAY AND ROUTE
- RAILROAD
- SURVEYED LINES  
TOWNSHIPS, BASE LINES, ETC.
- LOTS, MINING CLAIMS, PARCELS, ETC.
- UNSURVEYED LINES  
LOT LINES
- PARCEL BOUNDARIES  
MINING CLAIMS, ETC.
- RAILWAY AND RIGHT OF WAY
- UTILITY LINES
- NON-PERENNIAL STREAM
- FLOODING OR FLOODING RIGHTS
- SUBDIVISION OF COMPOSITE PLAN
- RESERVATIONS
- ORIGINAL SHORELINE
- MAPS OF MINES
- MINES
- RAILROAD RIGHT-OF-WAY

DISPOSITION OF CROWN LANDS

| TYPE OF DOCUMENT                | SYMBOL |
|---------------------------------|--------|
| PATENT, SURFACE & MINING RIGHTS | (C)    |
| LEASE                           | (L)    |
| AGREEMENT                       | (A)    |
| RIGHT OF WAY                    | (R)    |
| RESERVATION                     | (R)    |
| ORIGINAL SHORELINE              | (S)    |
| MAPS OF MINES                   | (M)    |
| MINES                           | (M)    |
| RAILROAD RIGHT-OF-WAY           | (R)    |



AREA  
**RICH LAKE**  
M.N.R. ADMINISTRATIVE DISTRICT  
**GERALDTON**  
MINING DIVISION  
**THUNDER BAY**  
LAND TITLES / REGISTRY DIVISION  
**KENORA/PATRICIA**

Ministry of Natural Resources  
Ontario  
Land Management Branch  
August 20, 1984

Date **JULY 1981**

Number

**G-388**

