



S2P12SW0021 28 FIRSTLOON LAKE

010

DIAMOND DRILLING

AREA: FIRSTLOON LAKE

REPORT NO: 28

WORK PERFORMED FOR: Kerr Addison Mines Ltd.

RECORDED HOLDER: Same as Above [xx]
: Other []

<u>Claim No.</u>	<u>Hole No.</u>	<u>Footage</u>	<u>Date</u>	<u>Note</u>
857500	KAF-87-18	229'	Aug/87	(1)
885687	KAF-87-19	579'	Aug/87	(1)
885688	KAF-87-20	699'	Aug/87	(1)
885687	KAF-87-21	299'	Aug/87	(1)
885561	KAF-87-23	399'	Aug/87	(1)
885561	KAF-87-24	389'	Aug/87	(1)
		<u>2594'</u>		

NOTES: (1) #W8803.059, filed July/88

DIAMOND DRILL RECORD

LOGGED BY K.M. TOMLINSON

KERR ADDISON MINES LTD.

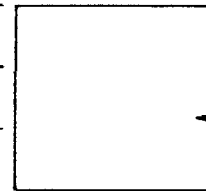
PROPERTY FIRST LOON LAKE

D.D.H. No. KAF-87-18 PAGE 1 of 1

LATITUDE L 80W BEARING OF HOLE 135° STARTED 2/8/87

DEPARTURE 87+00S DIP OF HOLE -45° COMPLETED 3/8/87

ELEVATION _____ DIP TESTS _____ DEPTH 229'



CLAIM No. _____

DIRECTION AND DISTANCE FROM

NE. CLAIM POST

FOOTAGE		DESCRIPTION	SAMPLE No.	FOOTAGE		SAMPLE LENGTH	ASSAY		
FROM	TO			FROM	TO		Au (PPb)		
0	41	CASING: SAND + BOULDERS (granitoid)							
41	229	MAFIC VOLCANICS							
		Dark green and very fine grained. Foliation poorly developed E 80° to C.A. Small quartz-carbonate veins (sub 1cm) dispersed throughout sub-parallel to foliation. Non-magnetic.	23918	41	46	5'	whole rock		
			23919	66	71	5'	whole rock		
			23920	91	96	5'	whole rock		
			23921	116	121	5'	whole rock		
		E 129' 3" zone with minor pyrite stringers sub 3mm	23922	141	146	5'	whole rock		
		129-138 Zone of sericitization.	23923	163	168	5'	whole rock		
		170-176 Graphite schist. Extremely deformed with pyrite stringers sub 2mm. CONDUCTOR.	23092	169	177	8'	Au	10	
		171-176 Fault zone containing fault breccia. NOTE: 2' of core lost due to extreme brecciation.							
		180-189 Fault zone with breccia.	23924	184	189	5'	whole rock		
		191-192 Fault zone containing calcite and a waxy green mineral possibly gypsum?	23093	191	192	1'	Au	25	
			23925	216	221	5'	whole rock		
229		E.O.H.							

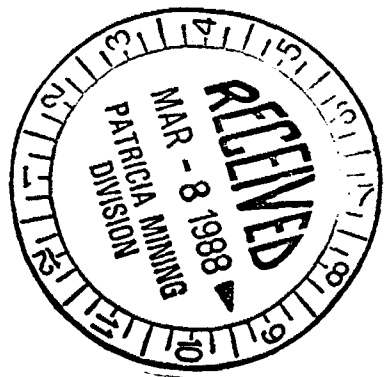
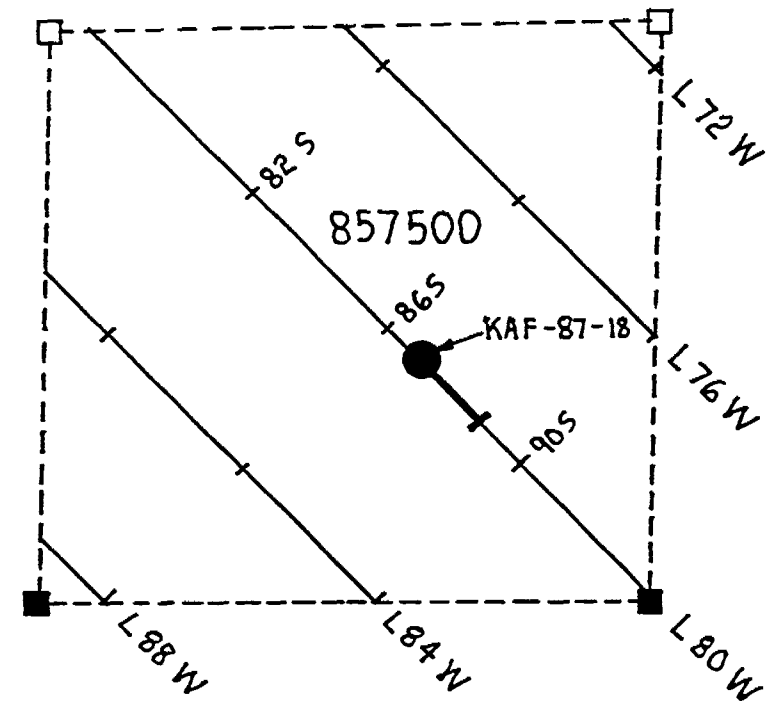
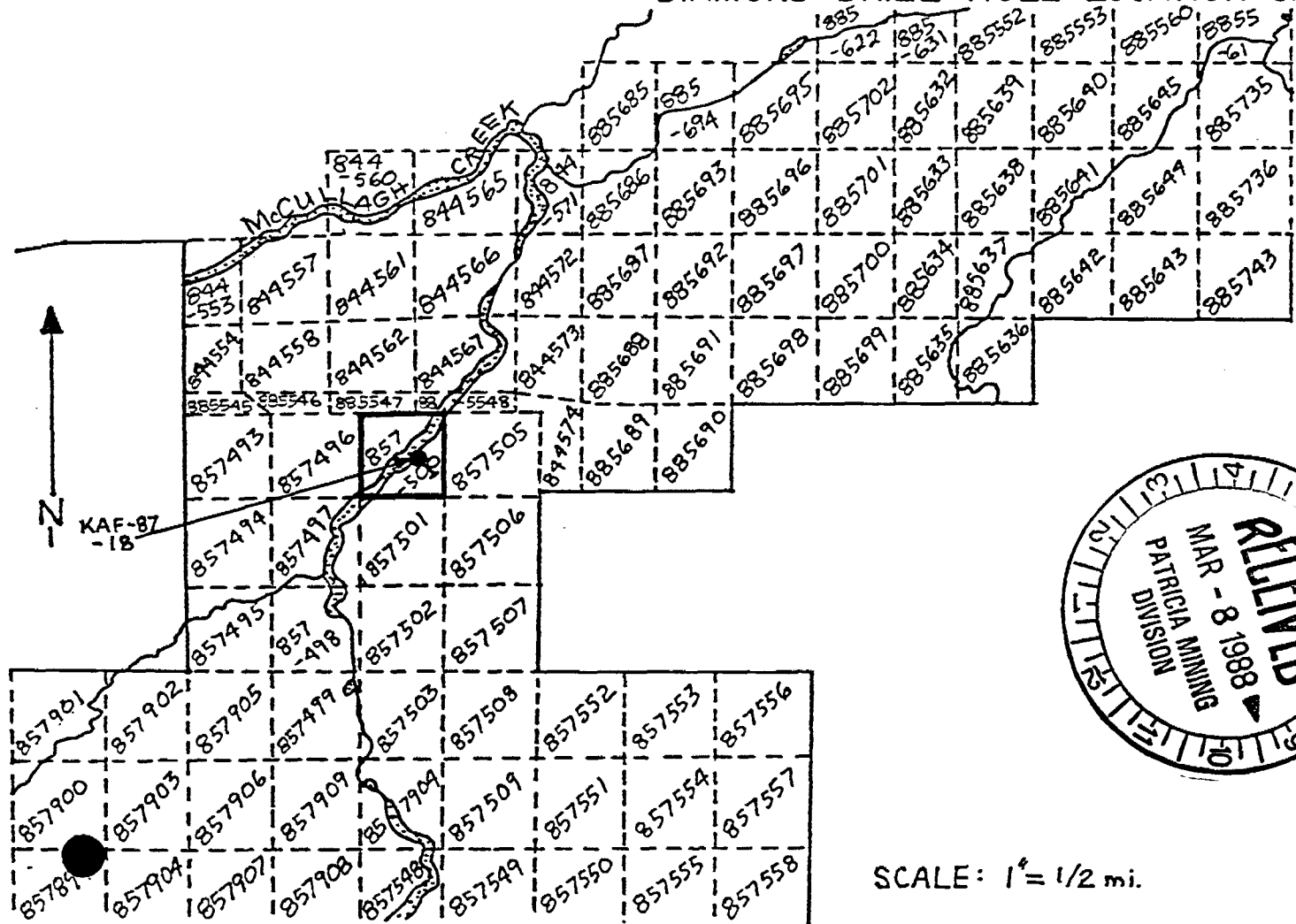
KERR ADDISON MINES LTD. DIAMOND DRILL HOLE RECORD

PROJECT: FIRSTLOON LAKE

HOLE No.: KAF-87-18

LOCATION	DIP TEST		LEVEL:	HORIZONTAL COMPONENT: 162'	DATE STARTED: 2/8/87
AREA or TWP: PICKLE LAKE	FOOTAGE	ANGLE		VERTICAL COMPONENT: 162'	DATE FINISHED: 3/8/87
		RECORDING	CORRECTED		
CLAIM No.: 857500	0	-45°		ELEVATION:	LOGGED BY: K.M. TOMLINSON
				LATITUDE: L 80 W	PURPOSE: HLEM + MAG. ANOMAL
NTS.:				DEPARTURE: 87+00S	TOT. RECOVERY: 90%
				CORE LOCATION: PICKLE LAKE	

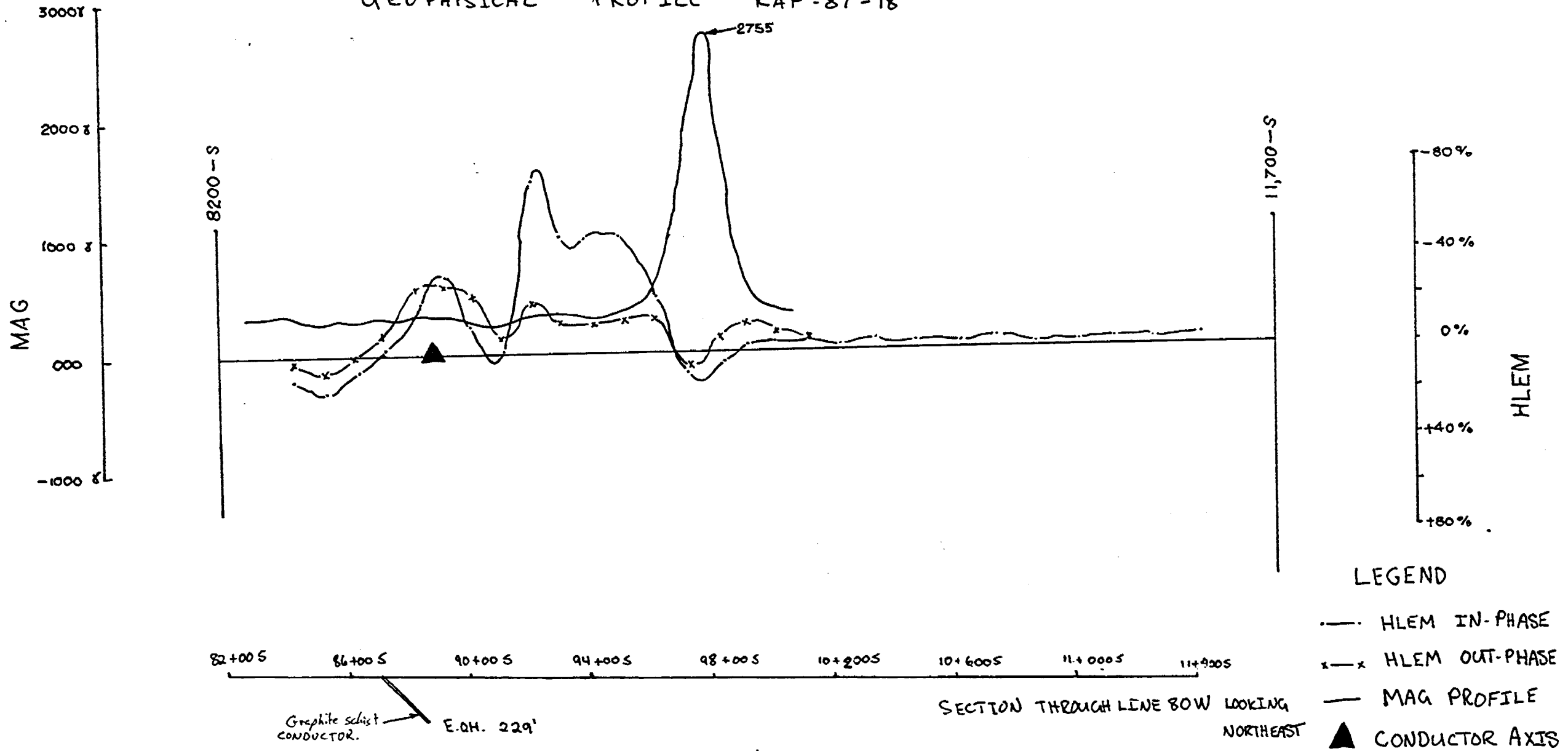
DIAMOND DRILL HOLE LOCATION SKETCH



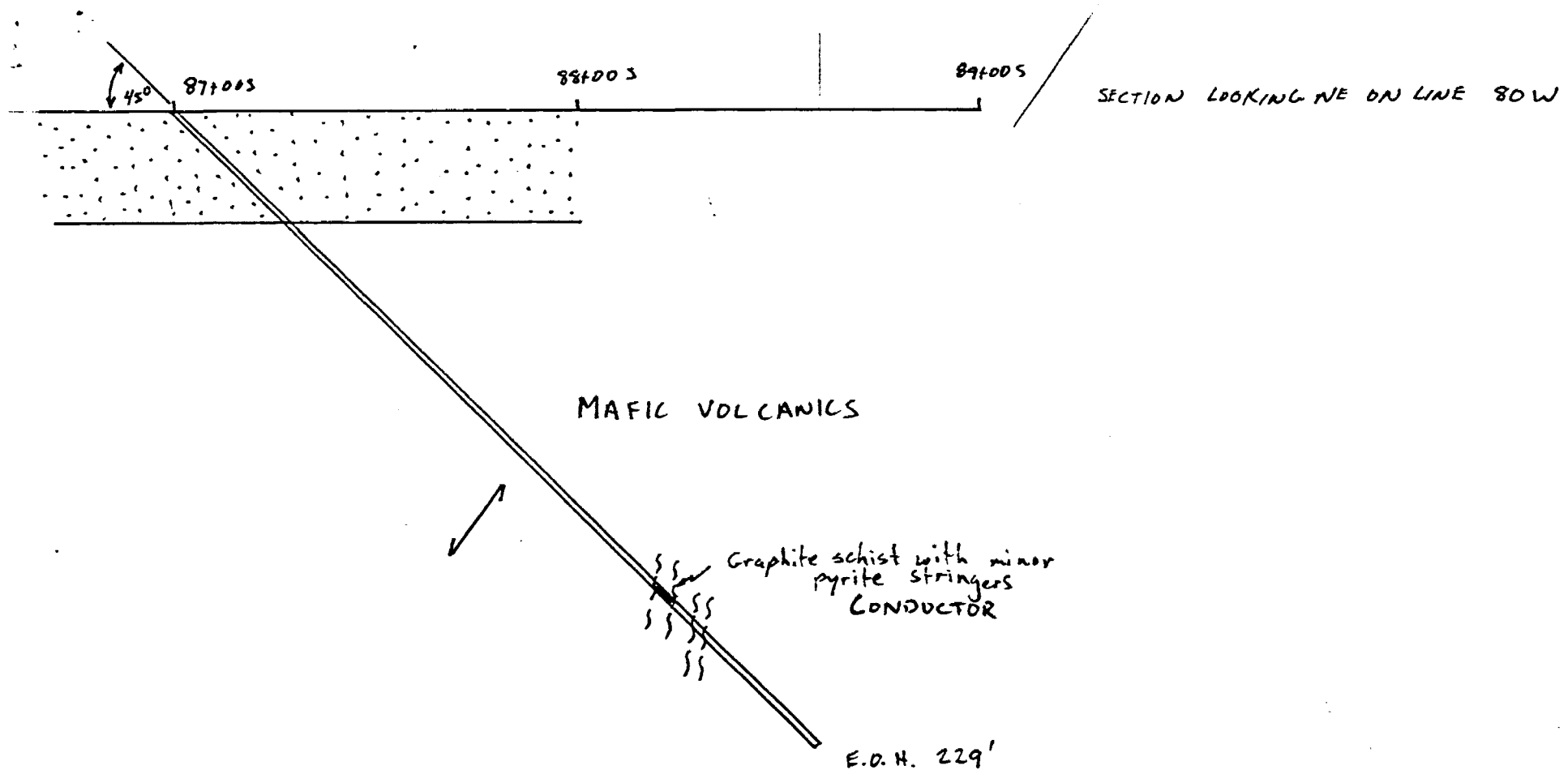
SCALE: 1" = 1/2 mi.

SCALE: 1" = 400'

GEO PHYSICAL PROFILE KAF-87-18



KERR ADDISON MINES LTD.		
DRILL HOLE SECTION		
Hole No: KAF-87-18		
Property: FIRST LOON LAKE		
Horizontal scale: 1" = 400'		
Vertical scale: 1" = 400'		
Line: L80W	Station: 87+00 S	
Azimuth: 135°	Angle: -45°	Depth: 229'
Twp/Area PICKLE LAKE	Province ONTARIO	



KERR ADDISON MINES LTD.		
DRILL HOLE SECTION		
Hole No: KAF-87-18		
Property: FIRST LOON LAKE		
Horizontal scale: 1" = 40'		
Vertical scale: 1" = 40'		
Line: L 80W	Station: 87+005	
Azimuth: 135°	Angle: -45°	Depth: 229'
Twp/Area PICKLE L.	Province ONTARIO	

DIAMOND DRILL RECORD

LOGGED BY K.M. TOMLINSON

KEIRR ADDISON MINES LTD.

PROPERTY FIRST LOON LAKE

D.D.H. No. KAF-87-19 PAGE 1 of 3

LATITUDE L 36W

BEARING OF HOLE 135°

STARTED 7/8/87

DEPARTURE 94+85 S

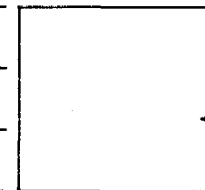
DIP OF HOLE -45°

COMPLETED 9/8/87

ELEVATION _____

DIP TESTS _____

DEPTH 579'



CLAIM No. 885687

DIRECTION AND DISTANCE FROM

NE. CLAIM POST

FOOTAGE		DESCRIPTION	SAMPLE No.	FOOTAGE		SAMPLE LENGTH	ASSAY		
FROM	TO			FROM	TO		Au (PPb)		
0	42	CASING: Sand + cobbles							
42	390	MAFIC FLOW	23947	43	48	5'	whole rock.		
		Dark green, very fine grained and massive.	23948	62	67	5'	whole rock		
		Foliation E 85° to C.A.	23949	93	98	5'	whole rock		
		E 77' Pyrite stringers ± chalcopyrite (1').	23096	76	78	2'	Au	<5	
		149-162 Coarse grained and strongly sheared mafic flow. Amphiboles sub 1cm.	23950	118	123	5'	whole rock		
		E 163 Minor pyrite stringers sub 2mm.	23951	143	148	5'	whole rock		
		244.2 ~ 252.1 Major fault zone with quartz veining containing minor pyrite (<1%).	23952	168	173	5'	whole rock.		
		E 247 Two feet of core lost in fault zone.	23097	245	249	4'	Au	<5	
		249-251 Major faulting, breccia.	23098	249	253.5	4.5'	Au	<5	
		253.5 ~ 255.5 Pyrite stringers and massive pyrite E 255' (0.5' wide).	23099	253.5	255.5	2'	Au	<5	
		E 252 Quartz vein (1.5').	23953	193	198	5'	whole rock.		
		369 ~ 390 Carbonitized mafic flow - greyer colour.	23954	218	223	5'	whole rock		
			23955	238	243	5'	whole rock		
			23956	268	273	5'	whole rock		
			23957	293	298	5'	whole rock		

DIAMOND DRILL RECORD

LOGGED BY K.M. TOMLINSON

KERR ADDISON MINES LTD.

PROPERTY FIRST LOON LAKE

D.D.H. No. KAF-57-19 PAGE 2 of 3

LATITUDE L 36W

BEARING OF HOLE 135°

STARTED 7/5/87

DEPARTURE 944 85 S

DIP OF HOLE -45°

COMPLETED 9/5/87

ELEVATION _____ DIP TESTS _____

DEPTH 579'



CLAIM No. 885687

DIRECTION AND DISTANCE FROM

NE. CLAIM POST

FOOTAGE		DESCRIPTION	SAMPLE No.	FOOTAGE		SAMPLE LENGTH	ASSAY				
FROM	TO			FROM	TO		Au (PPb)				
390	474	GRANODIORITE DYKE.	23958	318	323	5'	whole rock				
		light grey-white and medium grained containing	23959	343	348	5'	whole rock				
		sub-euhedral hornblende sub 3mm (40%).	23960	368	373	5'	whole rock				
		Plagioclase feldspar (40%) and quartz (20%)	23961	393	398	5'	whole rock				
		make up the matrix. Non-magnetic and non-	23962	418	423	5'	whole rock				
		Foliated.	23963	443	448	5'	whole rock				
			23964	468	473	5'	whole rock				
474	506	MAFIC FLOW	23965	493	498	5'	whole rock				
		Medium green and fine grained.									
		474-502 Extensively altered in stylonitic									
		pattern in discreet zones.									
506	560.5	CHERT AND TUFFACEOUS SEDIMENTS.	23100	505	508	3'	Au	25			
		Medium grey colour and well bedded @ 75° to	001	508	510	2'	Au	25			
		C.A. Interbedded within this unit are graphite	002	510	511	1'	Au	15			
		schists and mafic flows. Abundant pyrite	003	511	513.5	2.5'	Au	15			
		and pyrrhotite stringers throughout (3-5%).	004	513.5	517	3.5'	Au	25			

DIAMOND DRILL RECORD

LOGGED BY K.M. TOMLINSON

KERR ADDISON MINES LTD

PROPERTY FIRST LOON LAKE

D.D.H. No. KAF-87-19 PAGE 3 of 3

LATITUDE L 36 W BEARING OF HOLE 135° STARTED 7/8/87

CLAIM No. 885687

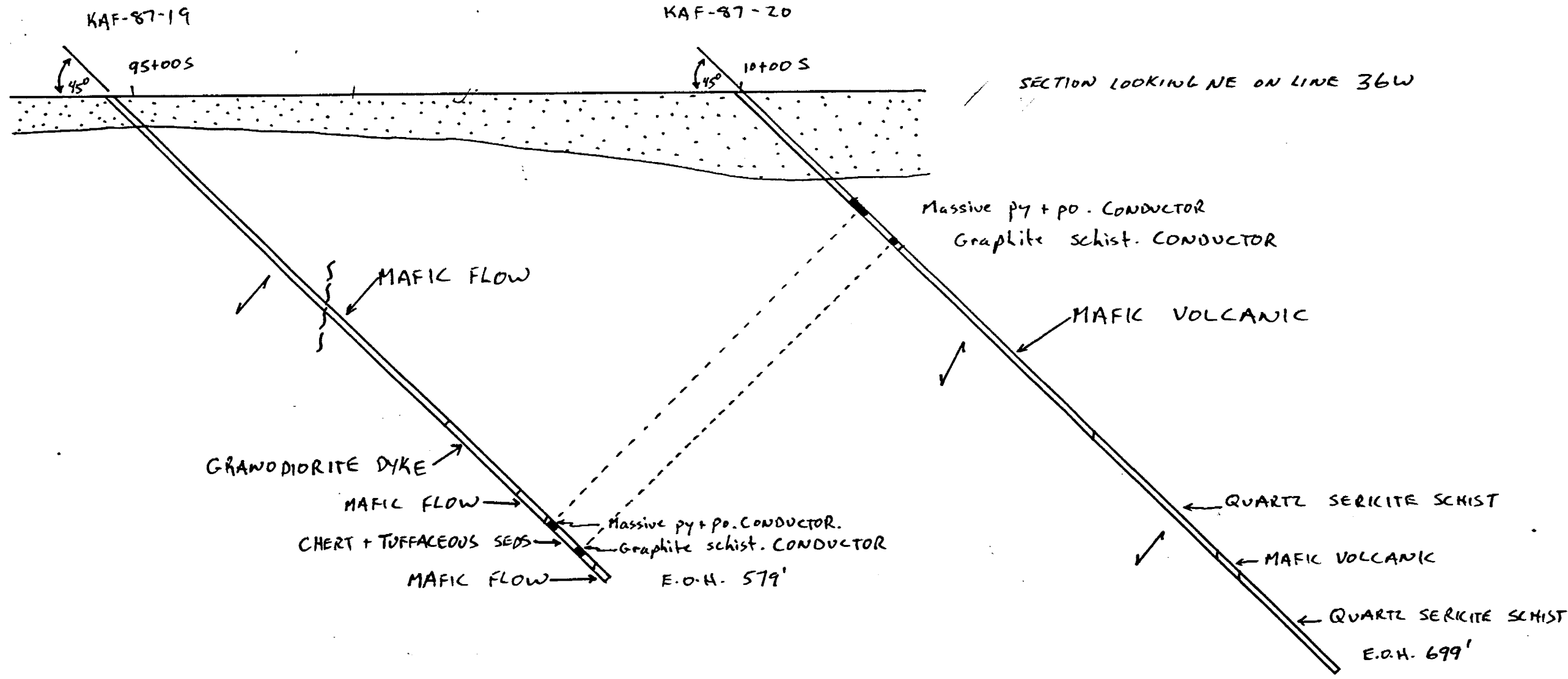
DEPARTURE 94+85S DIP OF HOLE -45° COMPLETED 9/8/87

DIRECTION AND DISTANCE FROM
NE. CLAIM POST

ELEVATION _____ DIP TESTS _____ DEPTH 579'

FOOTAGE		DESCRIPTION	SAMPLE No.	FOOTAGE		SAMPLE LENGTH	ASSAY		
FROM	TO			FROM	TO		Au (PPB)		
		506' Graphite schist with abundant pyrite and pyrrhotite stringers (0.4').	005	517	520	3'	Au	<5	
		510.5' Massive pyrite (0.4')	006	520	523	3'	Au	<5	
		511.3 ~ 513.1' Massive pyrite with minor pyrrhotite. CONDUCTOR.	007	523	526	3'	Au	<5	
		540.5' Graphite schist (0.3').	008	526	529	3'	Au	<5	
		542 ~ 550 Graphite schist. Extremely deformed with abundant pyrite and pyrrhotite stringers. Carbonate veinlets sub 1cm also deformed. CONDUCTOR.	009	541	544	3'	Au	<5	
			010	544	547	3'	Au	<5	
			011	547	550	3'	Au	<5	
560.5	579	MAFIC FLOW	23966	568	573	5'	whole rock.		
		Dark green and fine grained. Foliation 85° to C.A.							
		560.5 ~ 566 Garnet content (20-30%) sub 3mm.							
579		E.O.H.							

K.M. Tomlinson 11/8/87.



KERR ADDISON MINES LTD.		
DRILL HOLE SECTION		
Hole No: KAF-87-19 + 20		
Property: FIRST LOON LAKE		
Horizontal scale: 1" = 100'		
Vertical scale: 1" = 100'		
Line: L 36W	Station: (19) 94+85S (20) 10+00S	
Azimuth: 135°	Angle: -45°	Depth: (19) 579'; (20) 699'
Twp/Area: PICKLE LAKE	Province: ONTARIO	

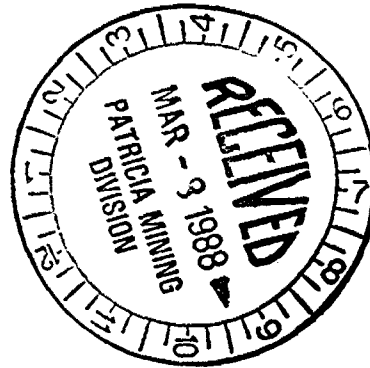
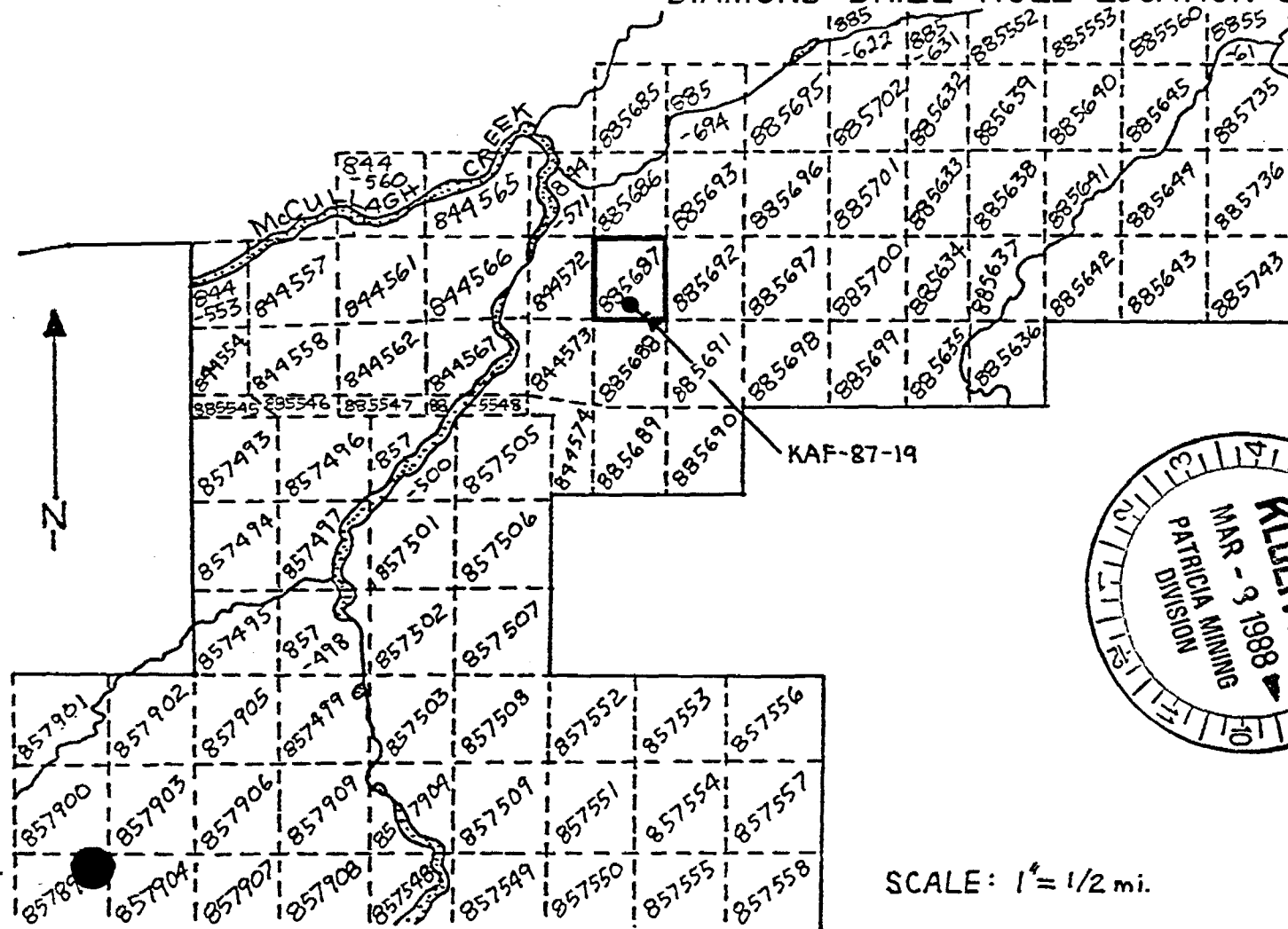
KERR ADDISON MINES LTD. DIAMOND DRILL HOLE RECORD

PROJECT: FIRSTLOON LAKE

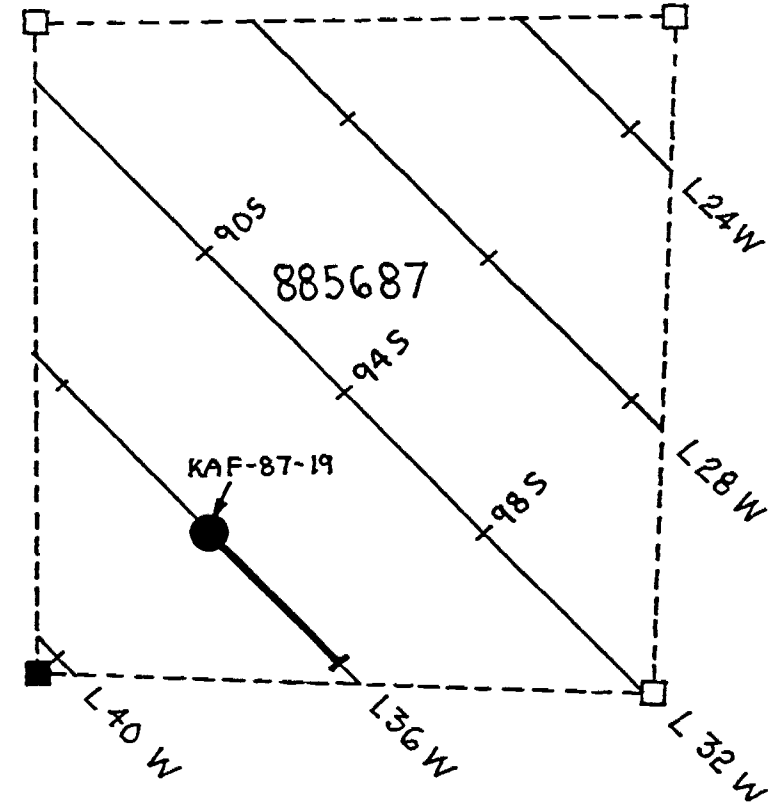
HOLE No.: KAF-87-19

LOCATION	DIP TEST		LEVEL:	HORIZONTAL COMPONENT: 409.4'	DATE STARTED: 7/8/87
AREA or TWP: PICKLE LAKE	FOOTAGE	ANGLE		VERTICAL COMPONENT: 409.4'	DATE FINISHED: 9/8/87
		RECORDING	CORRECTED		
CLAIM No.: 885687	0	-45°		ELEVATION:	LOGGED BY: K.M. TOMLINSON
				LATITUDE: L 36 W	PURPOSE: HLEM + MAG ANOMALY
N.T.S.:				DEPARTURE: 94 + 85 S	TOT. RECOVERY: 97% +
				CORE LOCATION: PICKLE LAKE	

DIAMOND DRILL HOLE LOCATION SKETCH

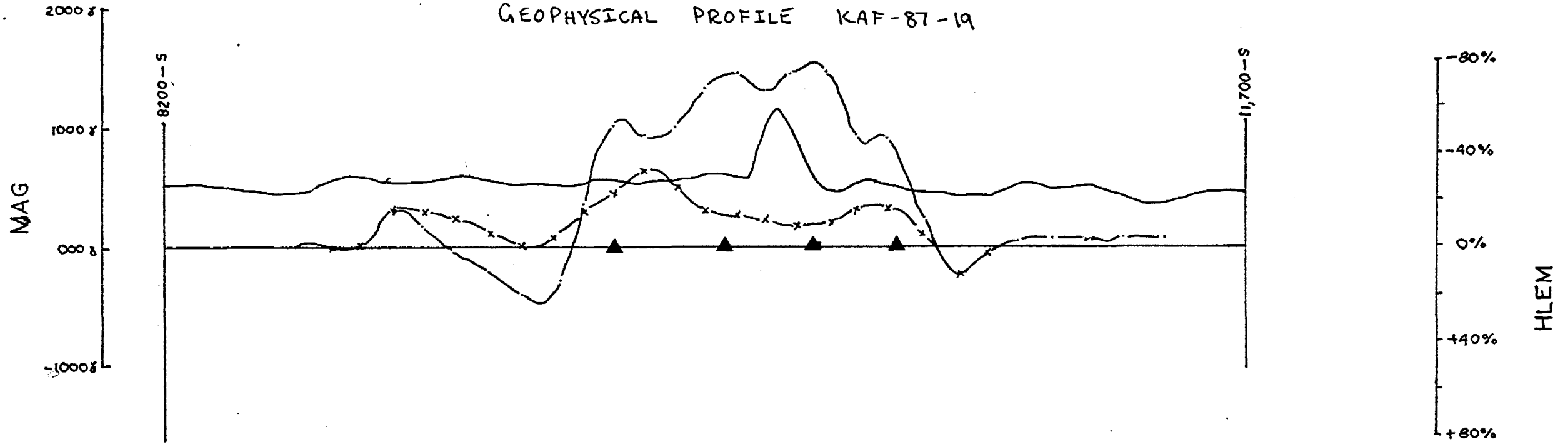


SCALE: 1" = 1/2 mi.



SCALE: 1" = 400'

GEOPHYSICAL PROFILE KAF-87-19



LEGEND

- HLEM IN-PHASE
- x- HLEM OUT-PHASE
- MAG PROFILE
- ▲ CONDUCTOR AXIS

82+00 S 86+00 S 90+00 S 94+00 S 98+00 S 10+200 S 10+600 S 11+000 S 11+400 S

SECTION THROUGH LINE 36 W LOOKING NORTHEAST

Graphite schist CONDUCTOR
 Massive py = po CONDUCTOR
 E.O.H. 579'

KERR ADDISON MINES LTD.		
DRILL HOLE SECTION		
Hole No: KAF-87-19		
Property: FIRST LOON LAKE		
Horizontal scale: 1" = 400'		
Vertical scale: 1" = 400'		
Line: L36 W	Station: 94+85 S	
Azimuth: 135°	Angle: -45°	Depth: 579'
Twp/Area: PICKLE LAKE	Province: ONTARIO	

DIAMOND DRILL RECORD

LOGGED BY K.M. TOMLINSON

KERR ADDISON MINES LTD

PROPERTY FIRST LOON LAKE

LATITUDE L36W

BEARING OF HOLE 135°

STARTED 4/8/87

DEPARTURE 101000 S

DIP OF HOLE -45°

COMPLETED 6/8/87

ELEVATION _____ DIP TESTS _____

DEPTH 699'

D.D.H. No. KAF-87-20 PAGE 1 of 3

CLAIM No. 885688



DIRECTION AND DISTANCE FROM

NE. CLAIM POST

FOOTAGE		DESCRIPTION	SAMPLE No.	FOOTAGE		SAMPLE LENGTH	ASSAY	
FROM	TO			FROM	TO		Au (PPB)	
0	102'	CASING: SAND + CLAY.						
102	408'	MAFIC VOLCANIC						
		Dark green and fine grained. Foliated @ 70° to C.A.	23926	102	107	5'	whole rock	
		102-124' Extensively sericitized in a discrete stibolitic pattern. Amphiboles sub mm and altered.						
		124-143' Well layered (sub 2cm) @ 70° to C.A. (possibly fine ash tuff). Abundant pyrite and pyrrhotite stringers sub 1cm and patches	23294	129	131	2'	Au	<5
			23295	131	132	1'	Au	<5
			23296	132	135	3'	Au	<5
		CONDUCTOR.	23297	135	138	3'	Au	<5
		131-132' Massive pyrrhotite and pyrite (70%)	23298	138	141	3'	Au	<5
		@ 140' Pyrite "vein" (8") 70%	23299	141	143	2'	Au	<5
		169-184' Chert + Tuffaceous sediments. Well bedded @ 75° to C.A., Garnet 5%, chert 60%, tuffaceous sediments 40%.	23300	143	145	2'	Au	<5
			23094	172	174	2'	Au	<5

DIAMOND DRILL RECORD

LOGGED BY K.M. TOMLINSON

KERR ADDISON MINES LTD.

PROPERTY FIRST LOON LAKE

D.D.H. No. KAF-87-20 PAGE 2 of 3

LATITUDE L 36 W

BEARING OF HOLE 135°

STARTED 4/8/87

DEPARTURE 107000 S

DIP OF HOLE -45°

COMPLETED 6/8/87

ELEVATION _____

DIP TESTS _____

DEPTH 699'



CLAIM No. 885688

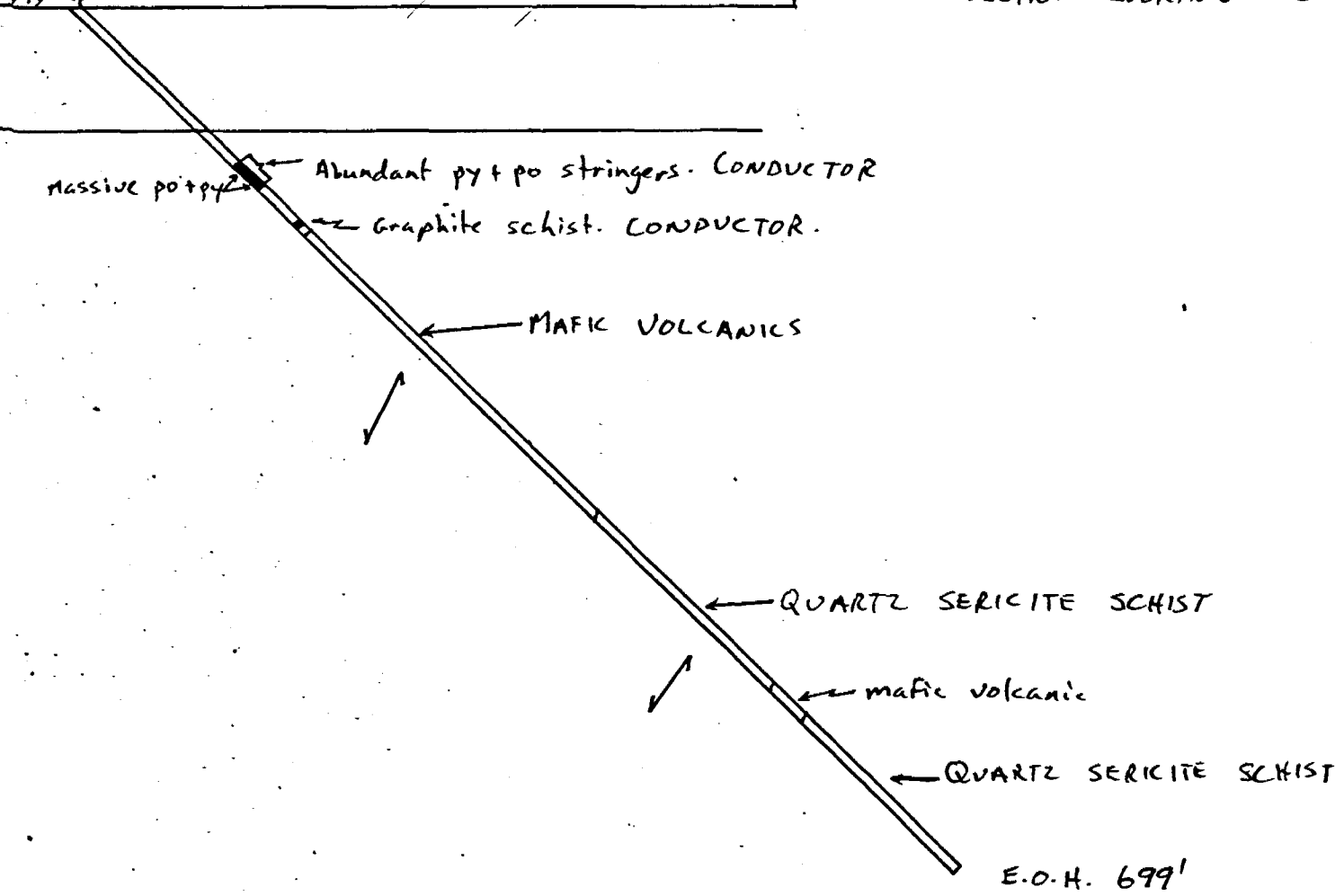
DIRECTION AND DISTANCE FROM

NE. CLAIM POST

FOOTAGE		DESCRIPTION	SAMPLE No.	FOOTAGE		SAMPLE LENGTH	ASSAY		
FROM	TO			FROM	TO		Au (PPb)		
		172.5 - 174' Graphite schist. Extremely folded and sheared with pyrrhotite stringers sub 1cm (5%). CONDUCTOR.							
		179.5 ~ 179.6' Graphite schist. Minor pyrrhotite stringers.							
		184 - 191' Garnet rich zone 50-60%. Subhedral garnets sub 3mm and sheared.	23927	202	207	5'	whole rock		
		209 ~ 259 Mafic volcanics with biotite and garnet rich horizons sub 2cm.	23928	227	232	5'	whole rock.		
		23929	252	257	5'	whole rock.			
		306 ~ 342 Mafic tuff. well bedded sub 1cm.	23930	277	282	5'	whole rock		
		⊙ 311 Quartz vein (4") with minor pyrite (21%)	23931	302	307	5'	whole rock		
		⊙ 392 Minor felsic tuff. Chert 80%, with minor pyrrhotite and pyrite stringers.	23095	391	392	1'	Au	25	
		23932	327	332	5'	whole rock			
		23933	352	357	5'	whole rock			
408	699	QUARTZ SERICITE SCHIST.	23934	377	382	5'	whole rock		
		Light green-grey in colour and well foliated	23935	402	407	5'	whole rock		
		in layers sub 1cm. Quartz 60%, sericite 40%.	23936	427	433	5'	whole rock		

10+000S 10+400S

SECTION LOOKING NE THROUGH LINE 36 W



KERR ADDISON MINES LTD.		
DRILL HOLE SECTION		
Hole No: KAF-87-20		
Property: FIRST LOON LAKE		
Horizontal scale: 1" = 100'		
Vertical scale: 1" = 100'		
Line: L36W	Station: 10+000S	
Azimuth: 135°	Angle: -45°	Depth: 699'
Loc/Area PICKLE L. Province ONTARIO		

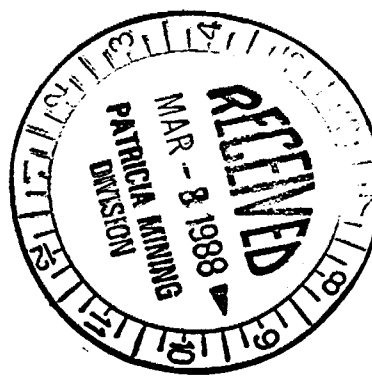
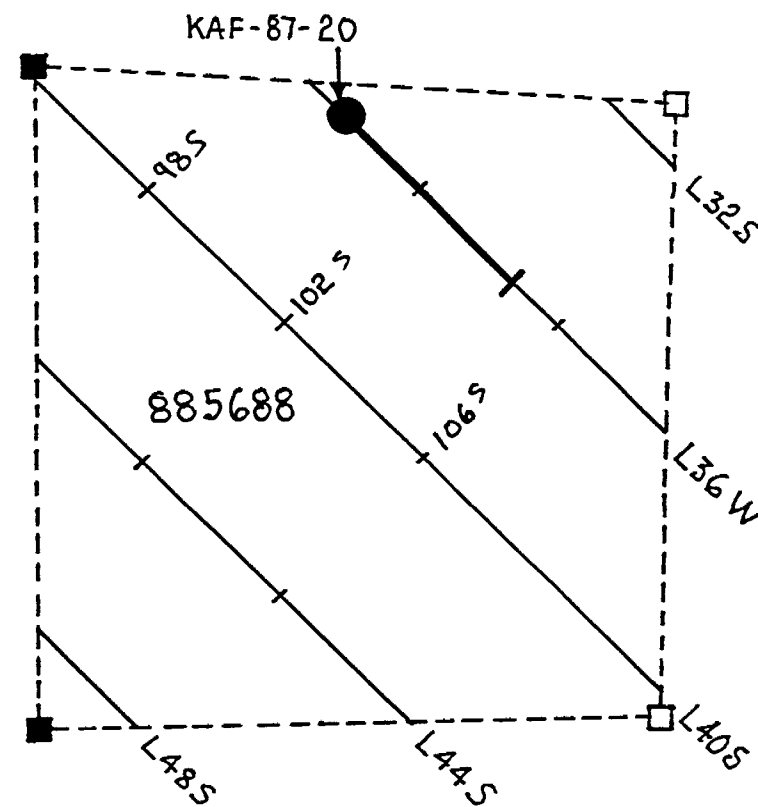
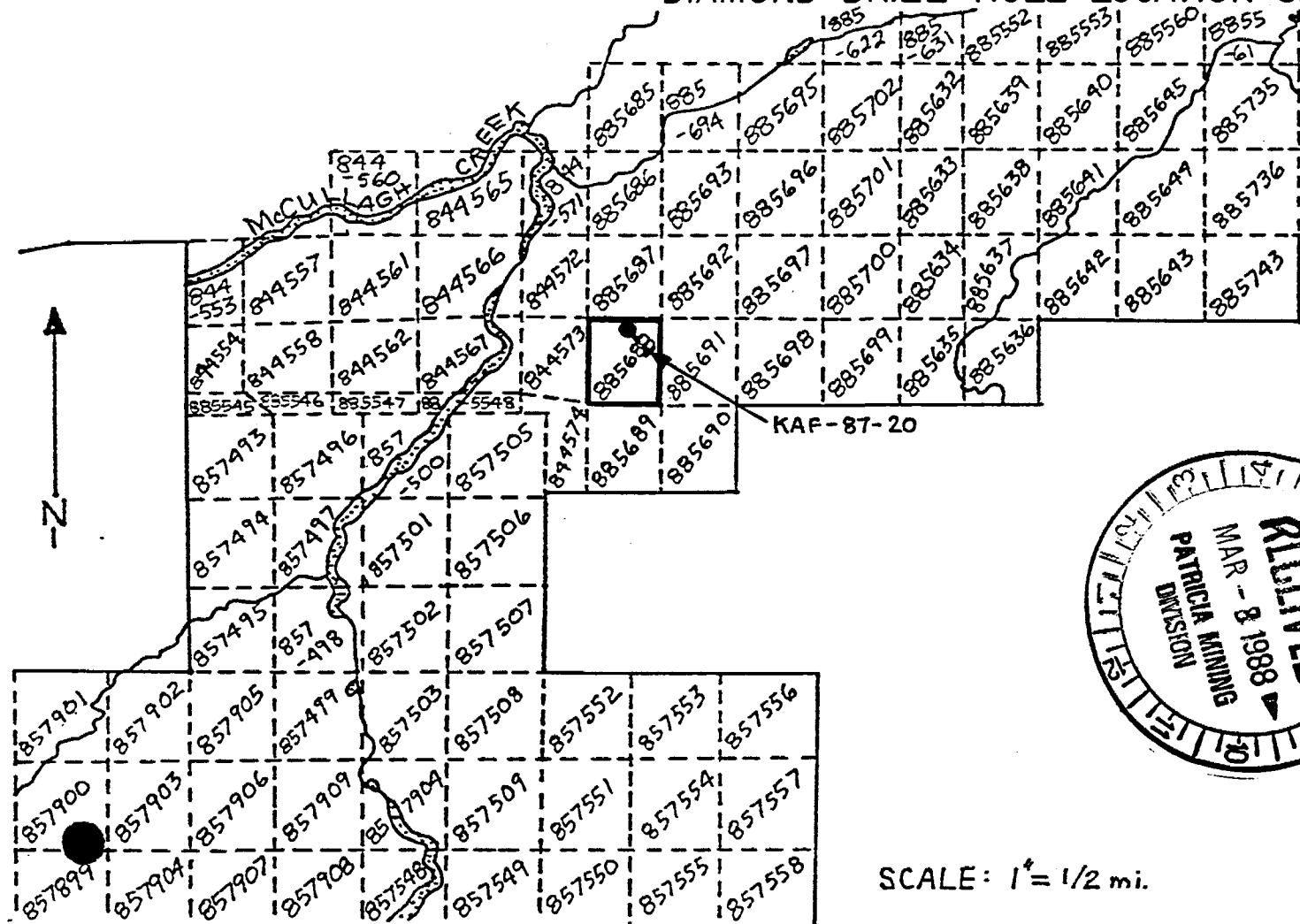
KERR ADDISON MINES LTD. DIAMOND DRILL HOLE RECORD

PROJECT: FIRSTLOON LAKE

HOLE No.: KAF-87-20

LOCATION	DIP TEST		LEVEL:	HORIZONTAL COMPONENT: 494'	DATE STARTED: 4/8/87
AREA or TWP: PICKLE LAKE	FOOTAGE 0	ANGLE		VERTICAL COMPONENT: 494'	DATE FINISHED: 6/8/87
		RECORDING -45°	CORRECTED		
CLAIM No.: 885688				LATITUDE: L 36 W	LOGGED BY: K.M. TOMLINSON
NTS.:				DEPARTURE: 10+000 S	PURPOSE: HLEM + MAG ANOMALY
				CORE LOCATION: PICKLE LAKE	TOT. RECOVERY: 99%+

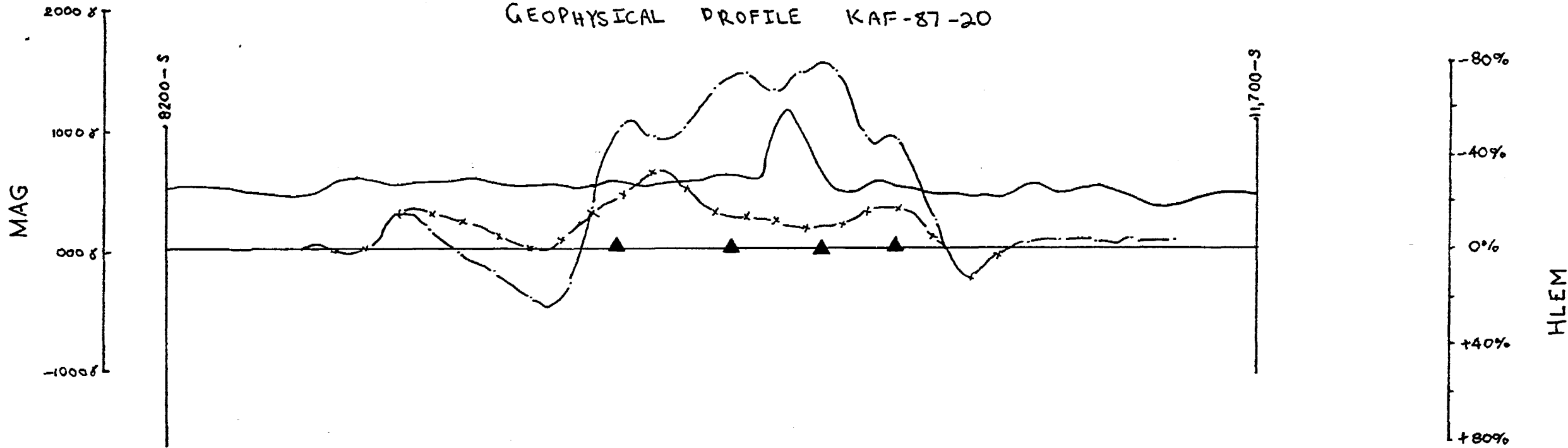
DIAMOND DRILL HOLE LOCATION SKETCH



SCALE: 1" = 1/2 mi.

SCALE: 1" = 400'

GEOPHYSICAL PROFILE KAF-87-20



LEGEND

- HLEM IN-PHASE
- x— HLEM OUT-PHASE
- MAG PROFILE

82+00 S 86+00 S 90+00 S 94+00 S 98+00 S 102+00 S 106+00 S 110+00 S 114+00 S

Abundant pyro stringers. CONDUCTOR. Graphite schist. CONDUCTOR.

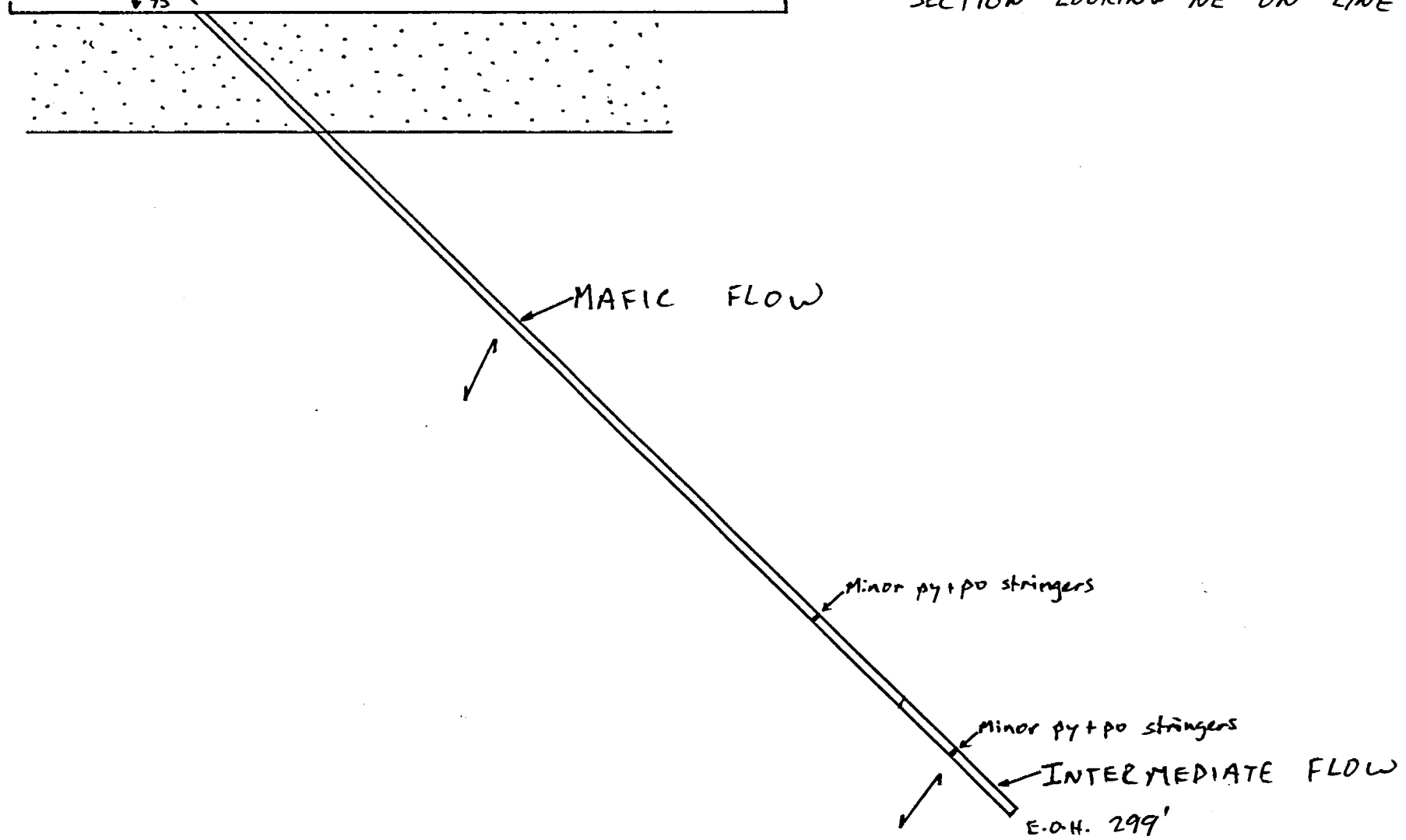
SECTION THROUGH LINE 36W LOOKING NORTHEAST

E.O.H. 699'

KERR ADDISON MINES LTD.	
DRILL HOLE SECTION	
Hole No:	KAF-87-20
Property:	FIRST LOON LAKE
Horizontal scale:	1" = 400'
Vertical scale:	1" = 400'
Line:	L36W Station: 10+000 S
Azimuth:	135° Angle: -45° Depth: 699'
Twp/Area:	PICKLE LAKE Province ONTARIO

90+00S 45° 92+00S

SECTION LOOKING NE ON LINE 24W



KERR ADDISON MINES LTD.		
DRILL HOLE SECTION		
Hole No: KAF-87-21		
Property: FIRST LOON LAKE		
Horizontal scale: 1"=40'		
Vertical scale: 1"=40'		
Line: L 24W	Station: 90+50S	
Azimuth: 135°	Angle: -45°	Depth: 299'
Twp/Area PICKLE LAKE		Province ONTARIO.

DIAMOND DRILL RECORD

LOGGED BY K.M. TOMLINSON

KERR ADDISON MINES LTD.

PROPERTY FIRST LOON LAKE

LATITUDE L 24W BEARING OF HOLE 135° STARTED 10/8/87

DEPARTURE 90+50 S DIP OF HOLE -45° COMPLETED 11/8/87

ELEVATION _____ DIP TESTS _____ DEPTH 299'

D.D.H. No. KAF-87-21 PAGE 1 of 2

CLAIM No. 885687



DIRECTION AND DISTANCE FROM
NE. CLAIM POST

FOOTAGE		DESCRIPTION	SAMPLE No.	FOOTAGE		SAMPLE LENGTH	ASSAY						
FROM	TO			FROM	TO		Au (PPB)						
0	44	CASING: SAND + MUD											
44	257	MAFIC FLOW											
		Medium green, very fine grained and massive.	23967	44	49	5'	whole rock						
		Well foliated c 70° to C.A. Small quartz -	23968	79	84	5'	whole rock						
		carbonate veins (sub 2cm) are rare but may	23969	104	109	5'	whole rock						
		contain minor pyrite and chalcopyrite (<0.1%). Non-	23970	129	134	5'	whole rock						
		magnetic.	23971	154	159	5'	whole rock						
		123.5 ~ 131' Quartz porphyry. Rounded											
		fragments of quartz (50%) sub 3mm in a dark											
		matrix of biotite, and feldspar.											
		151 - 154' Quartz porphyry.											
		155 - 157.5' Quartz porphyry.											
		161 - 176' Quartz porphyry.	23972	179	184	5'	whole rock						
		c 177.5' Quartz vein (4") barren.	23973	204	209	5'	whole rock						
		226 ~ 227 Chert + tuffaceous sediments with	012	226	227	1'	Au	5					
		minor pyrite + pyrrhotite stringers sub 2mm. CONDUCTOR?	23974	229	234	5'	whole rock						

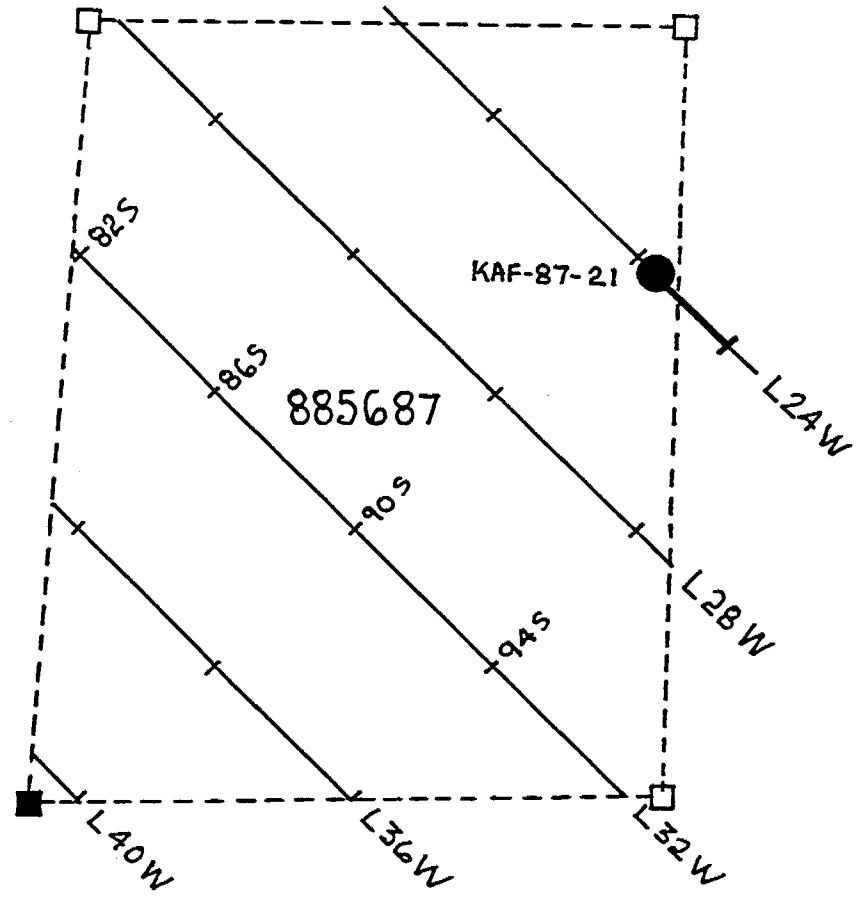
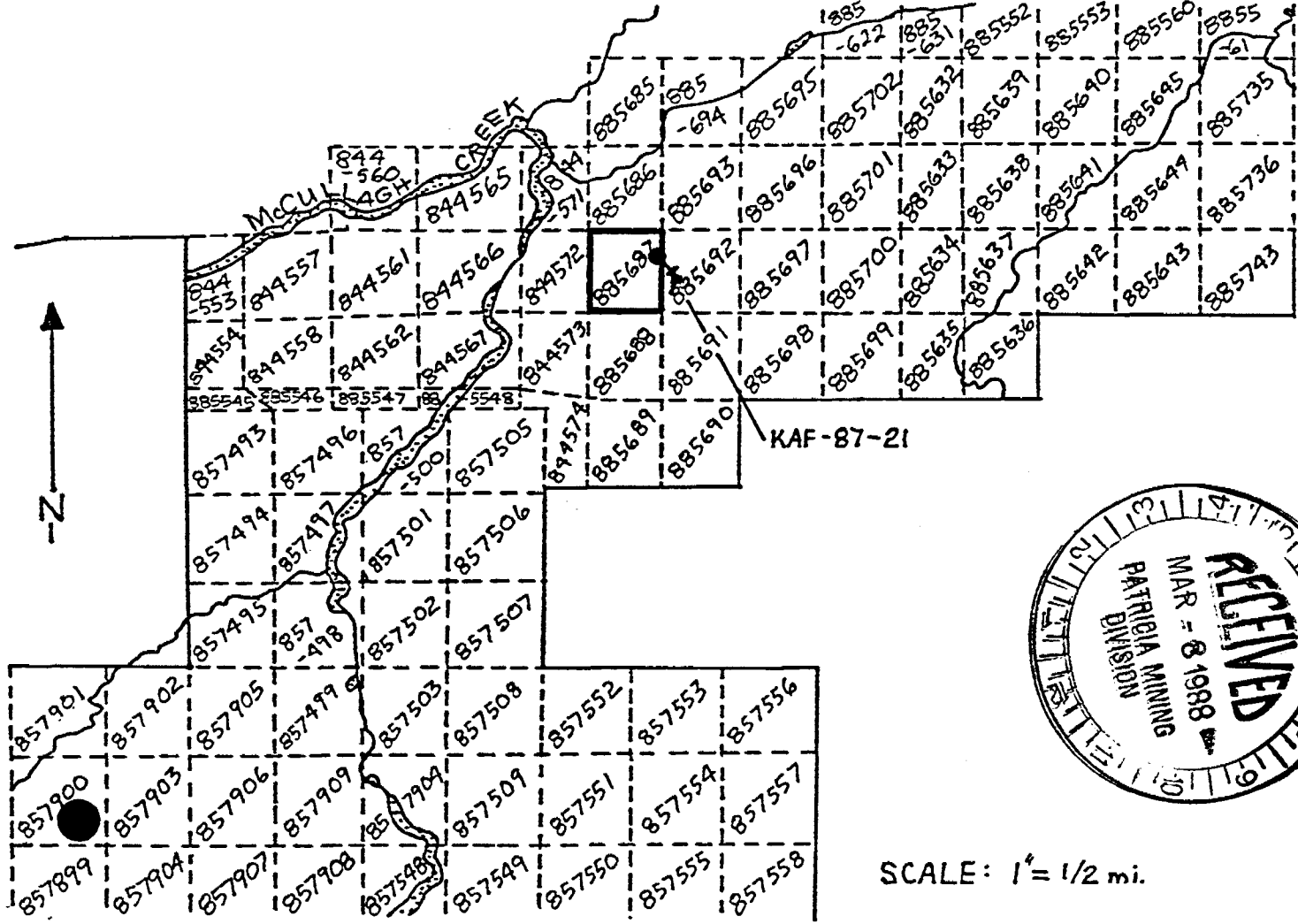
KERR ADDISON MINES LTD. DIAMOND DRILL HOLE RECORD

PROJECT: FIRSTLOON LAKE

HOLE No.: KAF-87-21

LOCATION	DIP TEST		LEVEL:	HORIZONTAL COMPONENT: 211.4'	DATE STARTED: 10/8/87
AREA or TWP: PICKLE LAKE	FOOTAGE 0	ANGLE		VERTICAL COMPONENT: 211.4'	DATE FINISHED: 11/8/87
		RECORDING	CORRECTED		
CLAIM No.: 885687		-45°		ELEVATION:	LOGGED BY: K. M. Tomlinson
N.T.S.:				LATITUDE: L24W	PURPOSE: HLEM + MAG. ANOMALY
				DEPARTURE: 90+50 S	TOT. RECOVERY:
				CORE LOCATION: PICKLE LAKE	

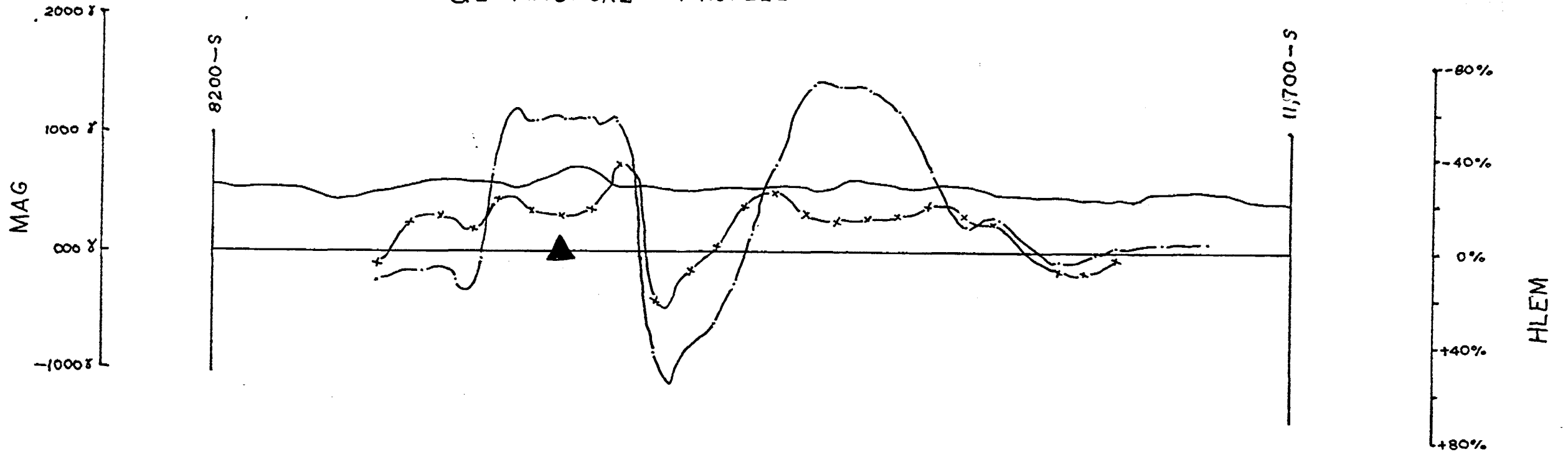
DIAMOND DRILL HOLE LOCATION SKETCH



SCALE: 1" = 1/2 mi.

SCALE: 1" = 400'

GEO PHYSICAL PROFILE KAF-87-21



8200 S 8600 S 9000 S 9400 S 9800 S 10200 S 10600 S 11000 S 11400 S

E.O.H. 299'

SECTION THROUGH LINE 24 W LOOKING NORTHEAST

LEGEND

- HLEM IN-PHASE
- x— HLEM OUT-PHASE
- MAG PROFILE
- ▲ CONDUCTOR AXIS

KERR ADDISON MINES LTD.		
DRILL HOLE SECTION		
Hole No: KAF-87-21		
Property: FIRST LOON LAKE		
Horizontal scale: 1" = 400'		
Vertical scale: 1" = 400'		
Line: L24W	Station: 90+50 S	
Azimuth: 135°	Angle: -45°	Depth: 299'
Twp/Area PICKLE LAKE Province ONTARIO		

DIAMOND DRILL RECORD

LOGGED BY K. M. TOMLINSON

KERR ADDISON MINES LTD.

PROPERTY FIRST LOON LAKE

D.D.H. No. KAF-87-23 PAGE 1 of 2

LATITUDE L 80 E BEARING OF HOLE 135° STARTED 12/8/87

CLAIM No. 885561

DEPARTURE 12+700 S DIP OF HOLE -45° COMPLETED 14/8/87

DIRECTION AND DISTANCE FROM

ELEVATION _____ DIP TESTS _____ DEPTH 399'

NE. CLAIM POST



FOOTAGE		DESCRIPTION	SAMPLE No.	FOOTAGE		SAMPLE LENGTH	ASSAY	
FROM	TO			FROM	TO		Au (PPB)	
0	55	CASING: Sand + Boulders (granitoid).						
55	399	MAFIC FLOW						
		Dark green, fine grained and massive. Poorly developed foliation E 85° to C.A. Non-magnetic	23987	59	64	5'	ICAP	
		74-84' Coarse grained hornblendite.	23988	84	89	5'	ICAP	
		Hornblende sub 1cm, euhedral and chloritized.	23989	109	114	5'	ICAP	
		Pyrite in patches sub 3mm (< 1%).	23990	134	139	5'	ICAP	
		155 - 169.2' Medium grained mafic Flow.	23991	159	164	5'	ICAP	
		169.2 - 174' Graphite with minor pyrite stringers sub 2mm. CONDUCTOR.	014	169	174	5'	Au 35	
		179 - 186' Fault zone.	23992	184	189	5'	ICAP	
		199 - 204' Fault zone.						
		204 - 209' Interbedded graphite schist with minor pyrite stringers and mafic flows.	015	204	209	5'	Au < 5	
			23993	219	224	5'	ICAP	
		224 - 229' Graphite schist with interbedded pyrite stringers sub-parallel to bedding (sub 2mm)	016	224	227	3'	Au 5	
			017	227	229	2'	Au 15	

45° 12+700S 12+800S 12+900S

SECTION LOOKING NE ON LINE 80E

MAFIC FLOW

Graphite with minor pyrite stringers. CONDUCTOR

Interbedded graphite schist and mafic flows. Minor pyrite

Graphite schist with interbedded pyrite stringers sub-parallel to bedding. Minor pyrrhotite + chalcocopyrite.

E.O.H. 399'

KERR ADDISON MINES LTD.	
DRILL HOLE SECTION	
Hole No: KAF-87-23	
Property: FIRST LOON LAKE	
Horizontal scale: 1" = 400'	
Vertical scale: 1" = 400'	
Line: LBOE	Station: 12+700S
Azimuth: 135°	Angle: -45° Depth: 399'
Twp/Area PKKLE L.	Province ONTARIO.

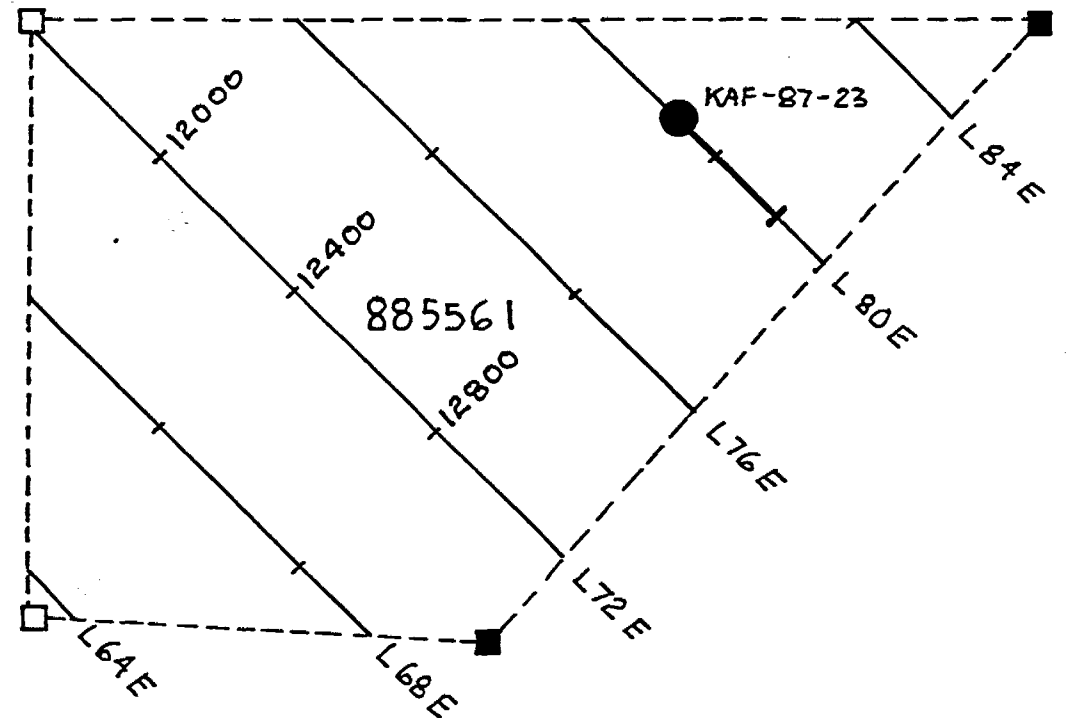
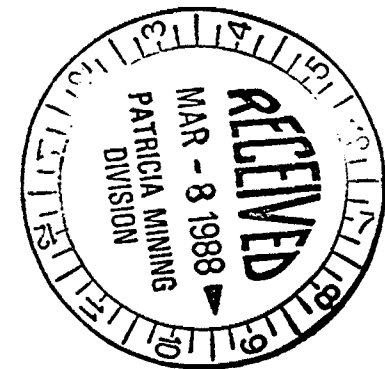
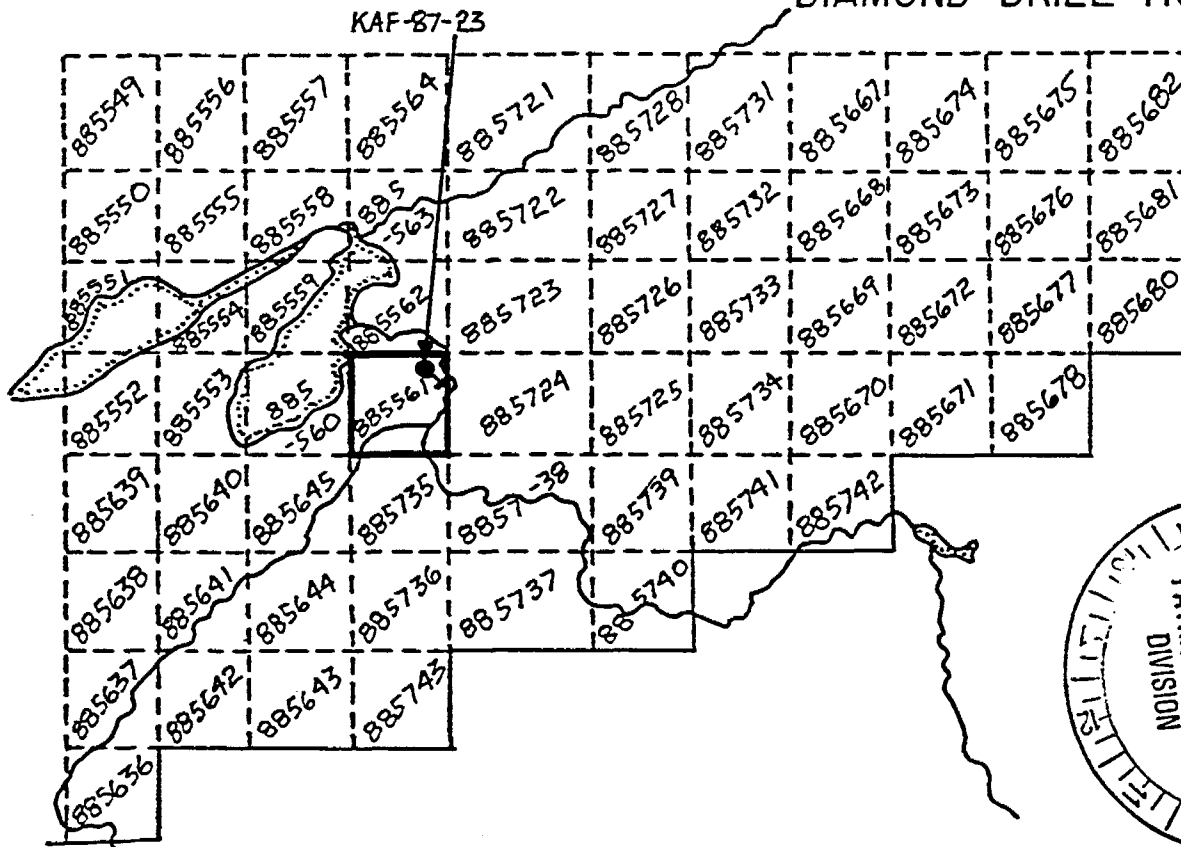
KERR ADDISON MINES LTD. DIAMOND DRILL HOLE RECORD

PROJECT: FIRSTLOON LAKE

HOLE No.: KAF-87-23

LOCATION	DIP TEST		LEVEL:	HORIZONTAL COMPONENT: 282.1'	DATE STARTED: 12/8/87
AREA or TWP: PICKLE LAKE	FOOTAGE 0	ANGLE		VERTICAL COMPONENT: 282.1'	DATE FINISHED: 14/8/87
		RECORDING	CORRECTED		
CLAIM No.: 885561		-450	ELEVATION:	BEARING: 135°	LOGGED BY: K.M. TOMLINSON
N.T.S.:			LATITUDE: L 80 E	LENGTH: 399'	PURPOSE: HLEM + MAG. ANOMALY
			DEPARTURE: 12+700 S	CORE LOCATION: PICKLE LAKE	TOT. RECOVERY: 90%

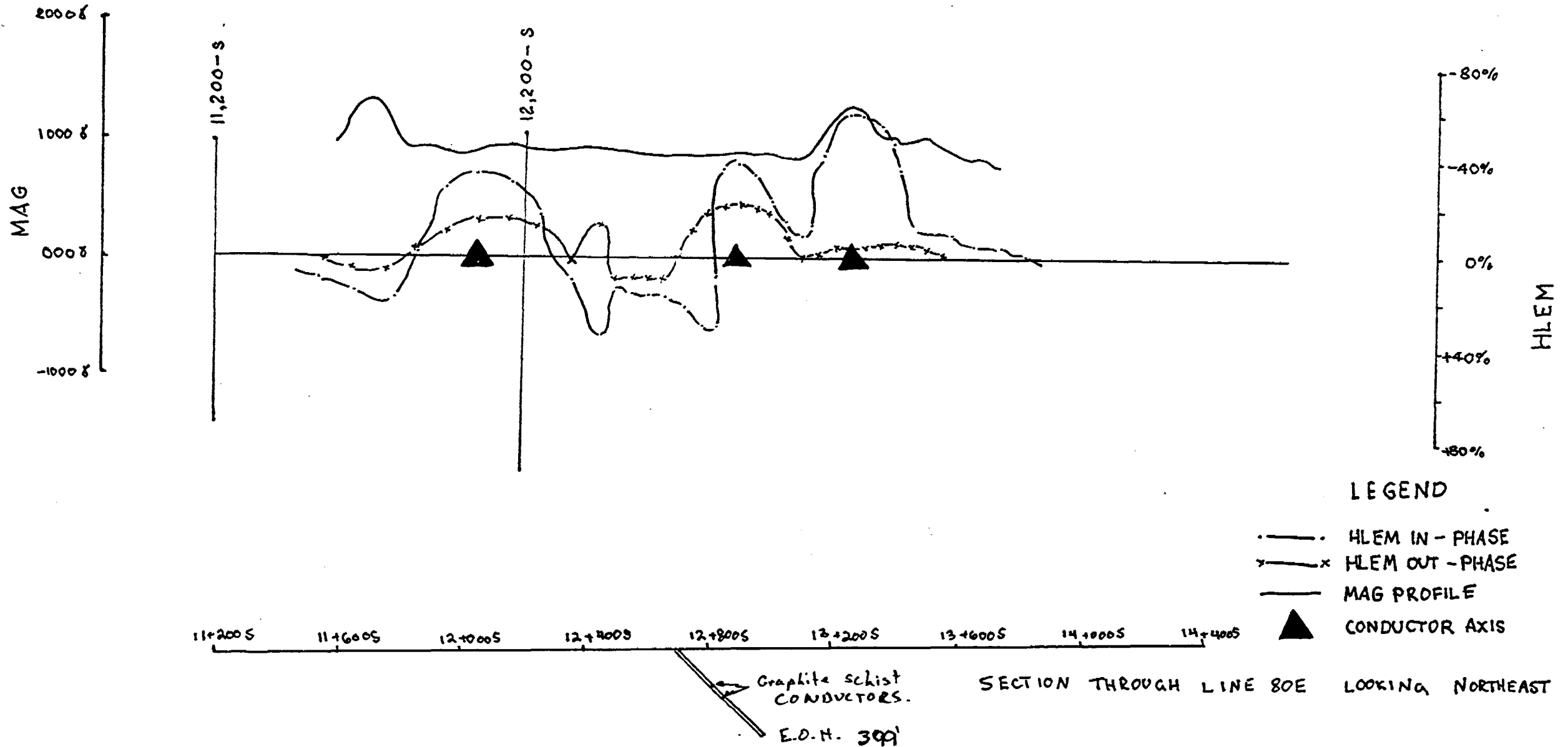
DIAMOND DRILL HOLE LOCATION SKETCH



SCALE: 1" = 1/2 mi.

SCALE: 1" = 400'

GEO PHYSICAL PROFILE KAF-87-23



LEGEND

- HLEM IN-PHASE
- x-x-x- HLEM OUT-PHASE
- MAG PROFILE
- ▲ CONDUCTOR AXIS

SECTION THROUGH LINE 80E LOOKING NORTHEAST

KERR ADDISON MINES LTD.		
DRILL HOLE SECTION		
Hole No: KAF-87-23		
Property: FIRST LOON LAKE		
Horizontal scale: 1" = 400'		
Vertical scale: 1" = 400'		
Line: 180E	Station: 12+700 S	
Azimuth: 135°	Angle: -45°	Depth: 399'
Twp/Area: PICKLE LAKE	Province: ONTARIO	

DIAMOND DRILL RECORD

LOGGED BY K.M. TOMLINSON

KERR ADDISON MINES LTD

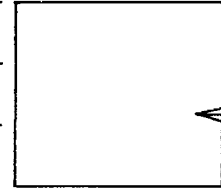
PROPERTY FIRST LOON LAKE

D.D.H. No. KAF-87-24 PAGE 1

LATITUDE L80E

BEARING OF HOLE 135°

STARTED 14/8/87



CLAIM No. 885561

DEPARTURE 1310005

DIP OF HOLE -45°

COMPLETED 15/8/87

DIRECTION AND DISTANCE FROM

ELEVATION _____ DIP TESTS _____

DEPTH 389'

NE. CLAIM POST

FOOTAGE		DESCRIPTION	SAMPLE No.	FOOTAGE		SAMPLE LENGTH	ASSAY			
FROM	TO			FROM	TO					
<u>SUMMARY LOG</u>										
0	53	CASING: Sand								
53	389	MAFIC FLOW								
		204-205.5' Massive pyrrhotite (80%), pyrite (20%) and minor chalcopyrite (<1%). CONDUCTOR.								
		227.5-230' Highly silicified zone containing disseminated pyrite + pyrrhotite (<2%).								
		230-231.5' Graphite schist with massive pyrite from 230-230.5'. CONDUCTOR.								
389		E.O.H.								
<p><u>COMMENTS:</u> Conductors consisted of massive pyrite - pyrrhotite with minor chalcopyrite at 204-205.5' and graphite schist with massive pyrite at 230-230.5'</p>										

DIAMOND DRILL RECORD

LOGGED BY K.M. TOMLINSON

KERR ADDISON MINES LTD.

PROPERTY FIRST LOON LAKE

LATITUDE L80E

BEARING OF HOLE 135°

STARTED 14/8/87

DEPARTURE 13+000 S

DIP OF HOLE -45°

COMPLETED 15/8/87

ELEVATION _____

DIP TESTS _____

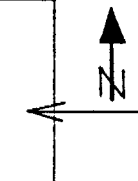
DEPTH 389'

D.D.H. No. KAF-87-24 PAGE 1 of 2

CLAIM No. 885561

DIRECTION AND DISTANCE FROM

NE. CLAIM POST



FOOTAGE		DESCRIPTION	SAMPLE No.	FOOTAGE		SAMPLE LENGTH	ASSAY						
FROM	TO			FROM	TO		Au (PPb)						
0	53	CASING: Sand											
53	389	MAFIC FLOW											
		Medium green, fine grained and massive.	022	59	64	5'	ICAP						
		Foliation well developed and defined by feldspar	023	74	79	5'	ICAP						
		and chloritized amphibole @ 90° to C.A. Non-	024	99	104	5'	ICAP						
		magnetic											
		118-129' Medium grained mafic flow with	025	124	129	5'	ICAP						
		hornblende crystals sub 3mm.											
		129-227.5' Sericitized coarse grained	026	154	159	5'	ICAP						
		mafic flow. Hornblende sub 1cm + chloritized.	027	179	184	5'	ICAP						
		@ 152' Quartz vein (3") with pyrite + chalcopyrite											
		(< 1%).	028	199	204	5'	ICAP						
		204-205.5' Massive pyrrhotite (80%), pyrite	018	204	206	2'	Au <5						
		(20%) and minor chalcopyrite (< 1%). Unit											
		contains rounded country rock fragments and											
		possibly some graphitic schist. CONDUCTOR.	029	219	224	5'	ICAP						

DIAMOND DRILL RECORD

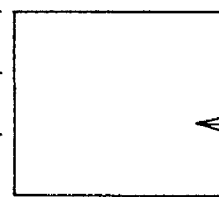
LOGGED BY K.M. TOMLINSON KERR ADDISON MINES LTD.

PROPERTY FIRST LOON LAKE


LATITUDE L80E BEARING OF HOLE 135° STARTED 14/8/87

DEPARTURE 1370005 DIP OF HOLE -45° COMPLETED 15/8/87

ELEVATION _____ DIP TESTS _____ DEPTH 389'



D.D.H. No. KAF-87-24 PAGE 2 of 2

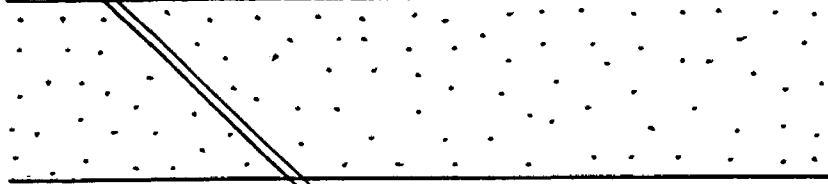
CLAIM No. 885561

 DIRECTION AND DISTANCE FROM
 NE. CLAIM POST

FOOTAGE		DESCRIPTION	SAMPLE No.	FOOTAGE		SAMPLE LENGTH	ASSAY					
FROM	TO			FROM	TO		Au (PPM)					
		227.5 - 230' Highly silicified zone, medium grey in colour. Contains disseminated pyrite and pyrrhotite ~ 2%	019	227	230	3'	Au	<5				
			030	244	249	5'	ICAP					
		230 - 231.5 Graphite schist with massive pyrite from 230 - 230.5'. CONDUCTOR.	020	230	232	2'	Au	<5				
		231.5 - 269 Garnet rich zone (30% in areas). Garnet crystals are subhedral and sub 1cm.	031	269	274	5'	ICAP					
		@ 311' Quartz vein (10"), barren.	032	299	304	5'	ICAP					
		@ 344 Garnet rich zone (20%) 2' wide with pyrite and pyrrhotite stringers ± chalcopyrite sub 1cm.	033	324	329	5'	ICAP					
			021	342.5	344	1.5'	Au	<5				
		349 - 389 Mafic flow with biotite and garnet rich horizons sub 2cm as well as veinlets of quartz-carbonate sub 1cm.	034	349	354	5'	ICAP					
			035	369	374	5'	ICAP					
389		E.O.H.										
		<i>Kevin M. Tomlinson</i>										

Kevin M. Tomlinson 19/8/87

13+00 S 13+100 S 13+200 S

SECTION LOOKING NE ON LINE 80 E



MAFIC FLOW

Massive pyrrhotite, pyrite ± chalcopyrite with rounded country rock fragments. CONDUCTOR.

Graphite schist with massive pyrite. CONDUCTOR

E.O.H. 389'

KERR ADDISON MINES LTD.		
DRILL HOLE SECTION		
Hole No: KAF-87-24		
Property: FIRST LOON LAKE		
Horizontal scale: 1" = 400'		
Vertical scale: 1" = 400'		
Line: L 80 E	Station: 13+00 S	
Azimuth: 135°	Angle: -45°	Depth: 389'
Twp/Area: PICILLE LAKE	Province: ONTARIO.	

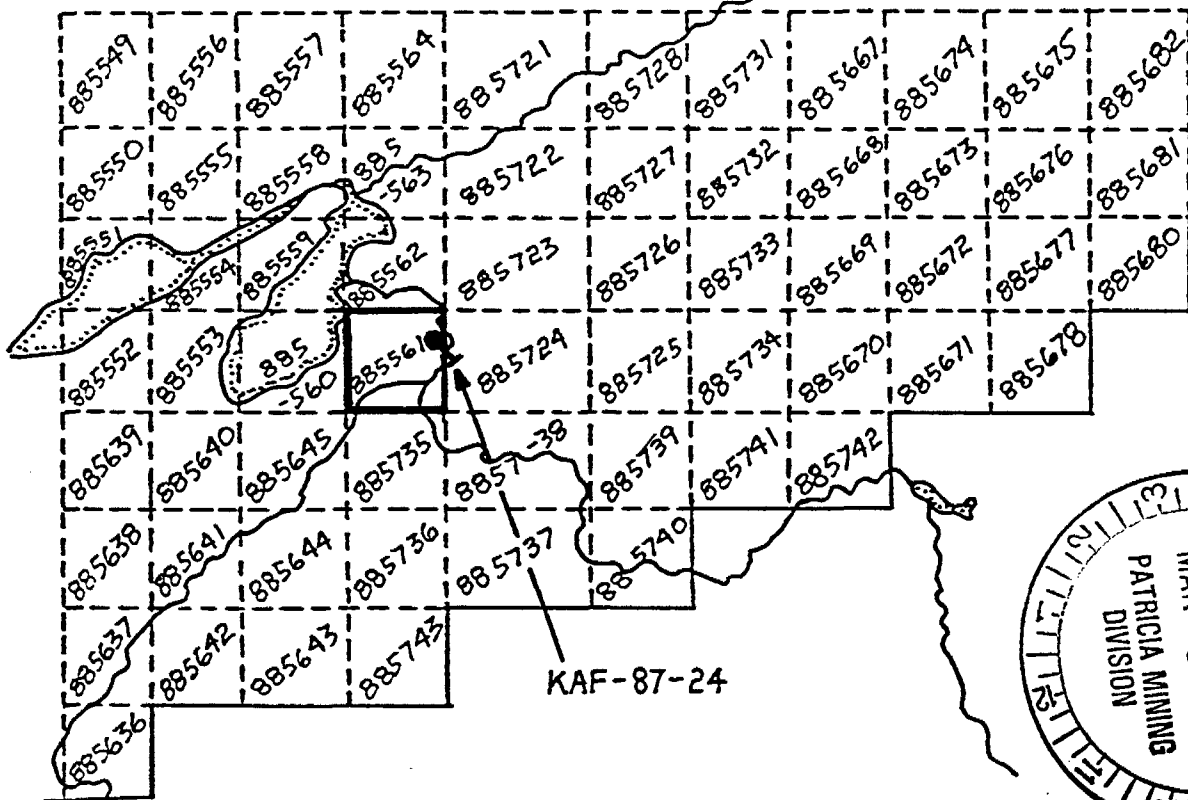
KERR ADDISON MINES LTD. DIAMOND DRILL HOLE RECORD

PROJECT: FIRSTLOON LAKE

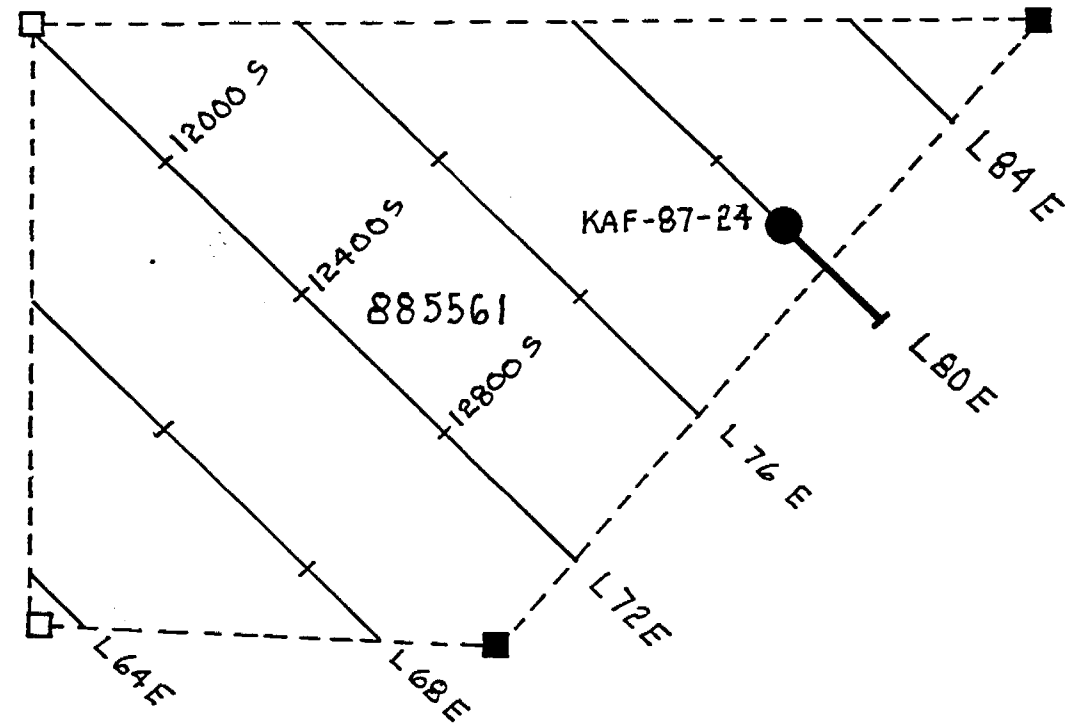
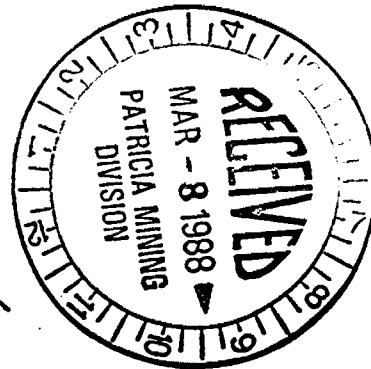
HOLE No.: KAF-87-24

LOCATION	DIP TEST		LEVEL:	HORIZONTAL COMPONENT: 275'	DATE STARTED: 14/8/87
AREA or TWP: PICKLE LAKE	FOOTAGE	ANGLE		VERTICAL COMPONENT: 275'	DATE FINISHED: 15/8/87
		RECORDING	CORRECTED		
CLAIM No.: 885561	0	-45°		ELEVATION:	LOGGED BY: K.M. TOMLINSON
				LATITUDE: L 80 E	PURPOSE: HLEM + MAG ANOMALY
NTS.:				DEPARTURE: 137000 S	TOT. RECOVERY: 99%+
				CORE LOCATION: PICKLE LAKE	

DIAMOND DRILL HOLE LOCATION SKETCH

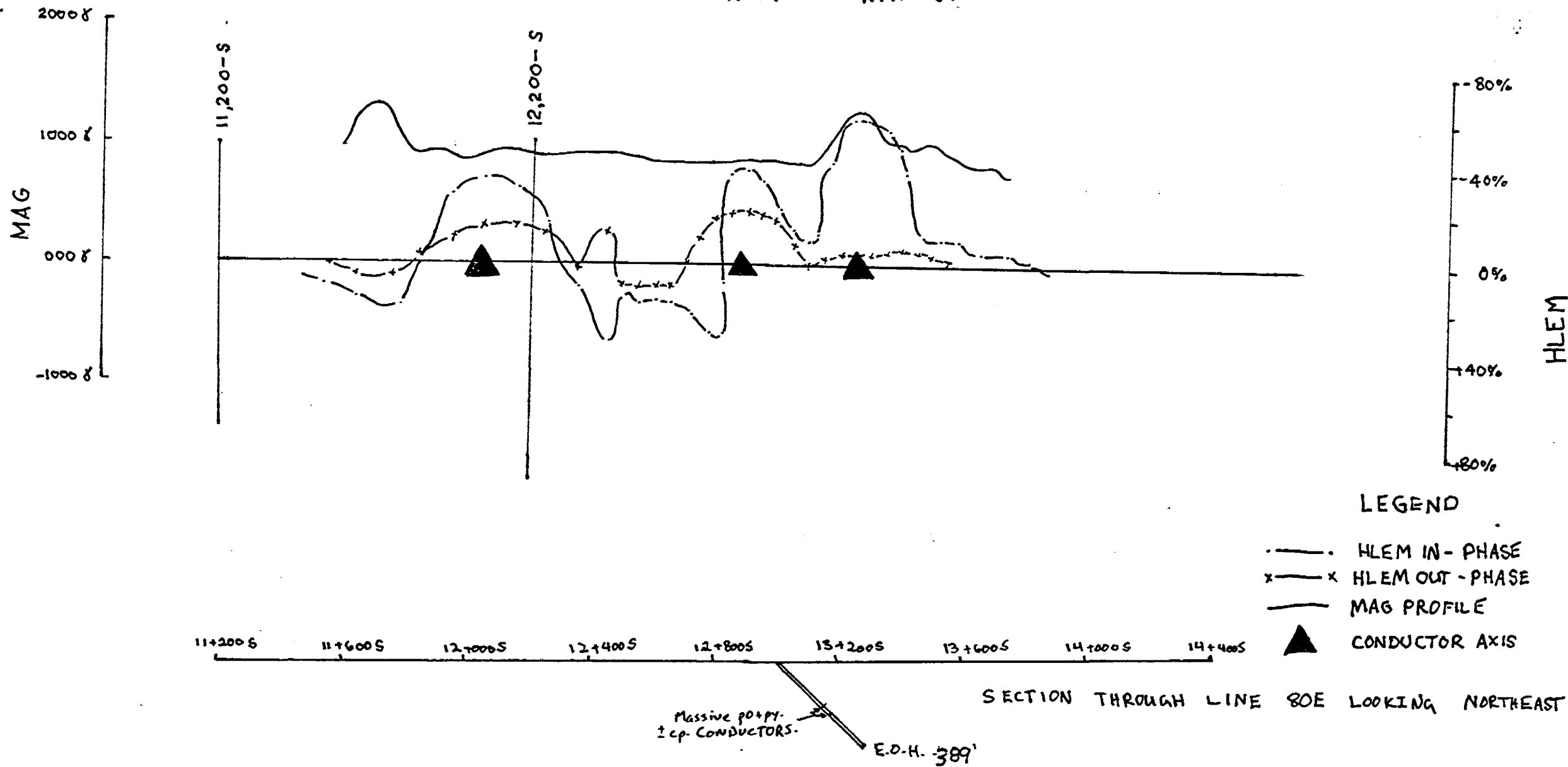


SCALE: 1" = 1/2 mi.



SCALE: 1" = 400'

GEOPHYSICAL PROFILE KAF-87-24



LEGEND

- HLEM IN-PHASE
- x-x- HLEM OUT-PHASE
- MAG PROFILE
- ▲ CONDUCTOR AXIS

KERR ADDISON MINES LTD.		
DRILL HOLE SECTION		
Hole No: KAF-87-24		
Property: FIRST LOON LAKE		
Horizontal scale: 1" = 400'		
Vertical scale: 1" = 400'		
Line: L80E	Station: 13+000 S	
Azimuth: 135°	Angle: -45°	Depth: 389'
Twp/Area PICKLE LAKE	Province ONTARIO	



Name and Postal Address of Recorded Holder: **KERR ADDISON MINES LIMITED**
Prospector's Licence No.: **A-35072**

P.O. Box 91, Commerce Court West, Toronto, Ont. M5L 1C7

Summary of Work Performance and Distribution of Credits: **FIRSTLOON LAKE G-2087 / TARP LAKE G-2281 / WEIBERG LAKE G-2248**

Total Work Days Cr. claimed 3,043	Mining Claim			Mining Claim			Mining Claim		
	Prefix	Number	Work Days Cr.	Prefix	Number	Work Days Cr.	Prefix	Number	Work Days Cr.
for Performance of the following work. (Check one only) <input type="checkbox"/> Manual Work <input type="checkbox"/> Shaft Sinking Drifting or other Lateral Work. <input type="checkbox"/> Compressed Air, other Power driven or mechanical equip. <input type="checkbox"/> Power Stripping <input checked="" type="checkbox"/> Diamond or other Core drilling <input type="checkbox"/> Land Survey	Pa	857896	20	Pa	857904	20	Pa	857496	20
		857897	20		857905	20		857497	20
		857898	20		857906	20		857498	20
		857899	20		857907	20		857499	20
		857900	20		857909	20		857500	20
		857901	20		857493	20		857501	20
		857902	20		857494	20		857502	20
	857903	20		857495	20		857503	20	

All the work was performed on Mining Claim(s): **Pa 943443, Pa 943444, Pa 857500, Pa 885687, Pa 885688, Pa 885689, Pa 885690, Pa 885691, Pa 885692, Pa 885693, Pa 885694, Pa 885695, Pa 885696, Pa 885697, Pa 885698, Pa 885699, Pa 885700, Pa 885701, Pa 885702, Pa 885703, Pa 885704, Pa 885705, Pa 885706, Pa 885707, Pa 885708, Pa 885709, Pa 885710, Pa 885711, Pa 885712, Pa 885713, Pa 885714, Pa 885715, Pa 885716, Pa 885717, Pa 885718, Pa 885719, Pa 885720, Pa 885721, Pa 885722, Pa 885723, Pa 885724, Pa 885725, Pa 885726, Pa 885727, Pa 885728, Pa 885729, Pa 885730, Pa 885731, Pa 885732, Pa 885733, Pa 885734, Pa 885735, Pa 885736, Pa 885737, Pa 885738, Pa 885739, Pa 885740, Pa 885741, Pa 885742, Pa 885743, Pa 885744, Pa 885745, Pa 885746, Pa 885747, Pa 885748, Pa 885749, Pa 885750, Pa 885751, Pa 885752, Pa 885753, Pa 885754, Pa 885755, Pa 885756, Pa 885757, Pa 885758, Pa 885759, Pa 885760, Pa 885761, Pa 885762, Pa 885763, Pa 885764, Pa 885765, Pa 885766, Pa 885767, Pa 885768, Pa 885769, Pa 885770, Pa 885771, Pa 885772, Pa 885773, Pa 885774, Pa 885775, Pa 885776, Pa 885777, Pa 885778, Pa 885779, Pa 885780, Pa 885781, Pa 885782, Pa 885783, Pa 885784, Pa 885785, Pa 885786, Pa 885787, Pa 885788, Pa 885789, Pa 885790, Pa 885791, Pa 885792, Pa 885793, Pa 885794, Pa 885795, Pa 885796, Pa 885797, Pa 885798, Pa 885799, Pa 885800, Pa 885801, Pa 885802, Pa 885803, Pa 885804, Pa 885805, Pa 885806, Pa 885807, Pa 885808, Pa 885809, Pa 885810, Pa 885811, Pa 885812, Pa 885813, Pa 885814, Pa 885815, Pa 885816, Pa 885817, Pa 885818, Pa 885819, Pa 885820, Pa 885821, Pa 885822, Pa 885823, Pa 885824, Pa 885825, Pa 885826, Pa 885827, Pa 885828, Pa 885829, Pa 885830, Pa 885831, Pa 885832, Pa 885833, Pa 885834, Pa 885835, Pa 885836, Pa 885837, Pa 885838, Pa 885839, Pa 885840, Pa 885841, Pa 885842, Pa 885843, Pa 885844, Pa 885845, Pa 885846, Pa 885847, Pa 885848, Pa 885849, Pa 885850, Pa 885851, Pa 885852, Pa 885853, Pa 885854, Pa 885855, Pa 885856, Pa 885857, Pa 885858, Pa 885859, Pa 885860, Pa 885861, Pa 885862, Pa 885863, Pa 885864, Pa 885865, Pa 885866, Pa 885867, Pa 885868, Pa 885869, Pa 885870, Pa 885871, Pa 885872, Pa 885873, Pa 885874, Pa 885875, Pa 885876, Pa 885877, Pa 885878, Pa 885879, Pa 885880, Pa 885881, Pa 885882, Pa 885883, Pa 885884, Pa 885885, Pa 885886, Pa 885887, Pa 885888, Pa 885889, Pa 885890, Pa 885891, Pa 885892, Pa 885893, Pa 885894, Pa 885895, Pa 885896, Pa 885897, Pa 885898, Pa 885899, Pa 885900, Pa 885901, Pa 885902, Pa 885903, Pa 885904, Pa 885905, Pa 885906, Pa 885907, Pa 885908, Pa 885909, Pa 885910, Pa 885911, Pa 885912, Pa 885913, Pa 885914, Pa 885915, Pa 885916, Pa 885917, Pa 885918, Pa 885919, Pa 885920, Pa 885921, Pa 885922, Pa 885923, Pa 885924, Pa 885925, Pa 885926, Pa 885927, Pa 885928, Pa 885929, Pa 885930, Pa 885931, Pa 885932, Pa 885933, Pa 885934, Pa 885935, Pa 885936, Pa 885937, Pa 885938, Pa 885939, Pa 885940, Pa 885941, Pa 885942, Pa 885943, Pa 885944, Pa 885945, Pa 885946, Pa 885947, Pa 885948, Pa 885949, Pa 885950, Pa 885951, Pa 885952, Pa 885953, Pa 885954, Pa 885955, Pa 885956, Pa 885957, Pa 885958, Pa 885959, Pa 885960, Pa 885961, Pa 885962, Pa 885963, Pa 885964, Pa 885965, Pa 885966, Pa 885967, Pa 885968, Pa 885969, Pa 885970, Pa 885971, Pa 885972, Pa 885973, Pa 885974, Pa 885975, Pa 885976, Pa 885977, Pa 885978, Pa 885979, Pa 885980, Pa 885981, Pa 885982, Pa 885983, Pa 885984, Pa 885985, Pa 885986, Pa 885987, Pa 885988, Pa 885989, Pa 885990, Pa 885991, Pa 885992, Pa 885993, Pa 885994, Pa 885995, Pa 885996, Pa 885997, Pa 885998, Pa 885999, Pa 886000.**

Required Information eg: type of equipment, Names, Addresses, etc. (See Table Below)

DIAMOND DRILL PROGRAM

CONTRACTOR: **LANGLEY DRILLING, BRAMPTON, ONT.**

DRILLING PERIOD: **JULY 25 - AUGUST 15/87**

NO. OF HOLES SUBMITTED: **7**

TOTAL FOOTAGE SUBMITTED: **3,043 FT.**

CORE SIZE: **BQ**

CORE STORAGE: **PICKLE LAKE, ONT.**

ONTARIO GEOLOGICAL SURVEY
ASSESSMENT FILES
OFFICE

MAR 16 1988



HOLE #S

KAF-87-15, 87-18, 87-19
KAF-87-20, 87-21, 87-23
KAF-87-24

Date of Report: **JAN 26/88**
Recorded Holder or Agent (Signature): **Patricia Lewis**

Certification Verifying Report of Work **RECEIVED**

I hereby certify that I have a personal and intimate knowledge of the facts set forth in the Report of Work annexed hereto, having performed the work or witnessed same during and/or after its completion and the annexed report is true.

Name and Postal Address of Person Certifying: **PATRICK LEWIS, SUITE 200 - 174 LARCH ST.**

SUDBURY, ONT. P3E 1G6
Date Certified: **March 3, 1988**
Certified by (Signature): **Patrick Lewis**

Table of Information/Attachments Required by the Mining Recorder

Type of Work	Specific information per type	Other information (Common to 2 or more types)	Attachments
Manual Work	Nil	Names and addresses of men who performed manual work/operated equipment, together with dates and hours of employment.	Work Sketch: these are required to show the location and extent of work in relation to the nearest claim post.
Shaft Sinking, Drifting or other Lateral Work			
Compressed air, other power driven or mechanical equip.	Type of equipment	Names and addresses of owner or operator together with dates when drilling/stripping done.	Work Sketch (as above) in duplicate
Power Stripping	Type of equipment and amount expended. Note: Proof of actual cost must be submitted within 30 days of recording.		
Diamond or other core drilling	Signed core log showing; footage, diameter of core, number and angles of holes.	Nil	Nil
Land Survey	Name and address of Ontario land surveyor.		



Instructions - Supply required data on a separate form for each type of work to be recorded (see table below).
- For Geo-technical work use form no. 1362 "Report of Work (Geological, Geophysical, Geochemical and Expenditures)".


Name and Postal Address of Recorded Holder	Prospector's Licence No.

Summary of Work Performance and Distribution of Credits

Total Work Days Cr. claimed	Mining Claim			Mining Claim			Mining Claim		
	Prefix	Number	Work Days Cr.	Prefix	Number	Work Days Cr.	Prefix	Number	Work Days Cr.
for Performance of the following work. (Check one only) <input type="checkbox"/> Manual Work <input type="checkbox"/> Shaft Sinking Drifting or other Lateral Work. <input type="checkbox"/> Compressed Air, other Power driven or mechanical equip. <input type="checkbox"/> Power Stripping <input type="checkbox"/> Diamond or other Core drilling <input type="checkbox"/> Land Survey	Pa	857505	20	Pa	844532	20	Pa	844542	20
		857506	20		844533	20		844543	20
		857507	20		844534	20		844544	20
		857508	20		844535	20		844545	20
		844528	20		844538	20		844546	20
		844529	20		844539	20		844547	20
		844530	20		844540	20		844548	20
		844531	20		844541	20		844549	20

All the work was performed on Mining Claim(s):

Required Information eg: type of equipment, Names, Addresses, etc. (See Table Below)



Date of Report	Recorded Holder or Agent (Signature)
----------------	--------------------------------------

Certification Verifying Report of Work

I hereby certify that I have a personal and intimate knowledge of the facts set forth in the Report of Work annexed hereto, having performed the work or witnessed same during and/or after its completion and the annexed report is true.

Name and Postal Address of Person Certifying		
Date Certified	Certified by (Signature)	

Table of Information/Attachments Required by the Mining Recorder

Type of Work	Specific information per type	Other information (Common to 2 or more types)	Attachments
Manual Work	Nil	Names and addresses of men who performed manual work/operated equipment, together with dates and hours of employment.	Work Sketch: these are required to show the location and extent of work in relation to the nearest claim post.
Shaft Sinking, Drifting or other Lateral Work			
Compressed air, other power driven or mechanical equip.	Type of equipment	Names and addresses of owner or operator together with dates when drilling/stripping done.	
Power Stripping	Type of equipment and amount expended. Note: Proof of actual cost must be submitted within 30 days of recording.		
Diamond or other core drilling	Signed core log showing; footage, diameter of core, number and angles of holes.	Nil	Work Sketch (as above) in duplicate
Land Survey	Name and address of Ontario land surveyor.		Nil




Name and Postal Address of Recorded Holder	Prospector's Licence No.

Summary of Work Performance and Distribution of Credits

Total Work Days Cr. claimed	Mining Claim			Work Days Cr.	Mining Claim			Work Days Cr.	Mining Claim			Work Days Cr.
	Prefix	Number	Work Days Cr.		Prefix	Number	Work Days Cr.		Prefix	Number	Work Days Cr.	
for Performance of the following work. (Check one only) <input type="checkbox"/> Manual Work <input type="checkbox"/> Shaft Sinking Drifting or other Lateral Work. <input type="checkbox"/> Compressed Air, other Power driven or mechanical equip. <input type="checkbox"/> Power Stripping <input type="checkbox"/> Diamond or other Core drilling <input type="checkbox"/> Land Survey	Pa	857476	20	Pa	857484	20	Pa	857492	20			
		857477	20		857485	20		857527	20			
		857478	20		857486	20		857528	20			
		857479	20		857487	20		857529	20			
		857480	20		857488	20		857530	20			
		857481	20		857489	20		857531	20			
		857482	20		857490	20		857532	20			
	857483	20		857491	20		857533	20				

All the work was performed on Mining Claim(s):

Required Information eg: type of equipment, Names, Addresses, etc. (See Table Below)



Date of Report	Recorded Holder or Agent (Signature)
----------------	--------------------------------------

Certification Verifying Report of Work

I hereby certify that I have a personal and intimate knowledge of the facts set forth in the Report of Work annexed hereto, having performed the work or witnessed same during and/or after its completion and the annexed report is true.

Name and Postal Address of Person Certifying

Date Certified	Certified by (Signature)
----------------	--------------------------

Table of Information/Attachments Required by the Mining Recorder

Type of Work	Specific information per type	Other information (Common to 2 or more types)	Attachments
Manual Work	Nil	Names and addresses of men who performed manual work/operated equipment, together with dates and hours of employment.	Work Sketch: these are required to show the location and extent of work in relation to the nearest claim post.
Shaft Sinking, Drifting or other Lateral Work			
Compressed air, other power driven or mechanical equip.	Type of equipment	Names and addresses of owner or operator together with dates when drilling/stripping done.	Work Sketch (as above) in duplicate
Power Stripping	Type of equipment and amount expended. Note: Proof of actual cost must be submitted within 30 days of recording.		
Diamond or other core drilling	Signed core log showing; footage, diameter of core, number and angles of holes.	Nil	Nil
Land Survey	Name and address of Ontario land surveyor.		




Name and Postal Address of Recorded Holder	Prospector's Licence No.

Summary of Work Performance and Distribution of Credits

Total Work Days Cr. claimed	Mining Claim			Work Days Cr.	Mining Claim			Work Days Cr.	Mining Claim			Work Days Cr.
	Prefix	Number			Prefix	Number			Prefix	Number		
for Performance of the following work. (Check one only) <input type="checkbox"/> Manual Work <input type="checkbox"/> Shaft Sinking Drifting or other Lateral Work. <input type="checkbox"/> Compressed Air, other Power driven or mechanical equip. <input type="checkbox"/> Power Stripping <input type="checkbox"/> Diamond or other Core drilling <input type="checkbox"/> Land Survey	Pa	857534	20	Pa	857541	20	Pa	857559	20			
		857535	20		857542	20		857876	20			
		857536	20		857542	20		857877	20			
		857537	20		857543	20		857878	20			
		857538	20		857544	20		857879	20			
		857538	20		857545	20		857880	20			
		857539	20		857546	20		857881	20			
		857540	20		857547	20		857882	20			

All the work was performed on Mining Claim(s):

Required Information eg: type of equipment, Names, Addresses, etc. (See Table Below)



Date of Report	Recorded Holder or Agent (Signature)
----------------	--------------------------------------

Certification Verifying Report of Work

I hereby certify that I have a personal and intimate knowledge of the facts set forth in the Report of Work annexed hereto, having performed the work or witnessed same during and/or after its completion and the annexed report is true.

Name and Postal Address of Person Certifying	
Date Certified	Certified by (Signature)

Table of Information/Attachments Required by the Mining Recorder

Type of Work	Specific information per type	Other information (Common to 2 or more types)	Attachments
Manual Work	Nil	Names and addresses of men who performed manual work/operated equipment, together with dates and hours of employment.	Work Sketch: these are required to show the location and extent of work in relation to the nearest claim post.
Shaft Sinking, Drifting or other Lateral Work			
Compressed air, other power driven or mechanical equip.	Type of equipment	Names and addresses of owner or operator together with dates when drilling/stripping done.	Work Sketch (as above) in duplicate
Power Stripping	Type of equipment and amount expended. Note: Proof of actual cost must be submitted within 30 days of recording.		
Diamond or other core drilling	Signed core log showing: footage, diameter of core, number and angles of holes.	Nil	Nil
Land Survey	Name and address of Ontario land surveyor.		



Mining Act

Name and Postal Address of Recorded Holder	Prospector's Licence No.

Summary of Work Performance and Distribution of Credits

Total Work Days Cr. claimed	Mining Claim			Work Days Cr.	Mining Claim			Work Days Cr.	Mining Claim			Work Days Cr.
	Prefix	Number	Work Days Cr.		Prefix	Number	Work Days Cr.		Prefix	Number	Work Days Cr.	
for Performance of the following work. (Check one only) <input type="checkbox"/> Manual Work <input type="checkbox"/> Shaft Sinking Drifting or other Lateral Work. <input type="checkbox"/> Compressed Air, other Power driven or mechanical equip. <input type="checkbox"/> Power Stripping <input type="checkbox"/> Diamond or other Core drilling <input type="checkbox"/> Land Survey	Pa	857883	20	Pa	857891	20	Pa	844581	20			
		857884	20		857892	20		844582	20			
		857885	20		857893	20		844583	20			
		857886	20		857894	20		844584	20			
		857887	20		857895	20		844585	20			
		857888	20		844578	20		844586	20			
		857889	20		844579	20		844587	20			
		857890	20		844586	20		844588	20			

All the work was performed on Mining Claim(s):

Required Information eg: type of equipment, Names, Addresses, etc. (See Table Below)



Date of Report	Recorded Holder or Agent (Signature)
----------------	--------------------------------------

Certification Verifying Report of Work

I hereby certify that I have a personal and intimate knowledge of the facts set forth in the Report of Work annexed hereto, having performed the work or witnessed same during and/or after its completion and the annexed report is true.

Name and Postal Address of Person Certifying	
Date Certified	Certified by (Signature)

Table of Information/Attachments Required by the Mining Recorder

Type of Work	Specific information per type	Other information (Common to 2 or more types)	Attachments
Manual Work	Nil	Names and addresses of men who performed manual work/operated equipment, together with dates and hours of employment.	Work Sketch: these are required to show the location and extent of work in relation to the nearest claim post.
Shaft Sinking, Drifting or other Lateral Work			
Compressed air, other power driven or mechanical equip.	Type of equipment	Names and addresses of owner or operator together with dates when drilling/stripping done.	
Power Stripping	Type of equipment and amount expended. Note: Proof of actual cost must be submitted within 30 days of recording.		
Diamond or other core drilling	Signed core log showing; footage, diameter of core, number and angles of holes.		Work Sketch (as above) in duplicate
Land Survey	Name and address of Ontario land surveyor.	Nil	Nil



Mining Act

Name and Postal Address of Recorded Holder	Prospector's Licence No.

Summary of Work Performance and Distribution of Credits

Total Work Days Cr. claimed	Mining Claim			Work Days Cr.	Mining Claim			Work Days Cr.	Mining Claim			Work Days Cr.
	Prefix	Number	Work Days Cr.		Prefix	Number	Work Days Cr.		Prefix	Number	Work Days Cr.	
for Performance of the following work. (Check one only) <input type="checkbox"/> Manual Work <input type="checkbox"/> Shaft Sinking Drifting or other Lateral Work. <input type="checkbox"/> Compressed Air, other Power driven or mechanical equip. <input type="checkbox"/> Power Stripping <input type="checkbox"/> Diamond or other Core drilling <input type="checkbox"/> Land Survey	Pa	844589	20	Pa	844554	40	Pa	844562	40			
		844590	20	^{44 P.L.} 855555	40		885545	40				
		844591	20		844556	40		885546	40			
		88 P.L.			844557	40		885547				
		844550	40		844558	40		88 P.L.				
		844551	40		844559	40		885683	21			
		844552	40		844560	40						
		844553	40		844561	40						

All the work was performed on Mining Claim(s):

Required Information eg: type of equipment, Names, Addresses, etc. (See Table Below)



Date of Report	Recorded Holder or Agent (Signature)

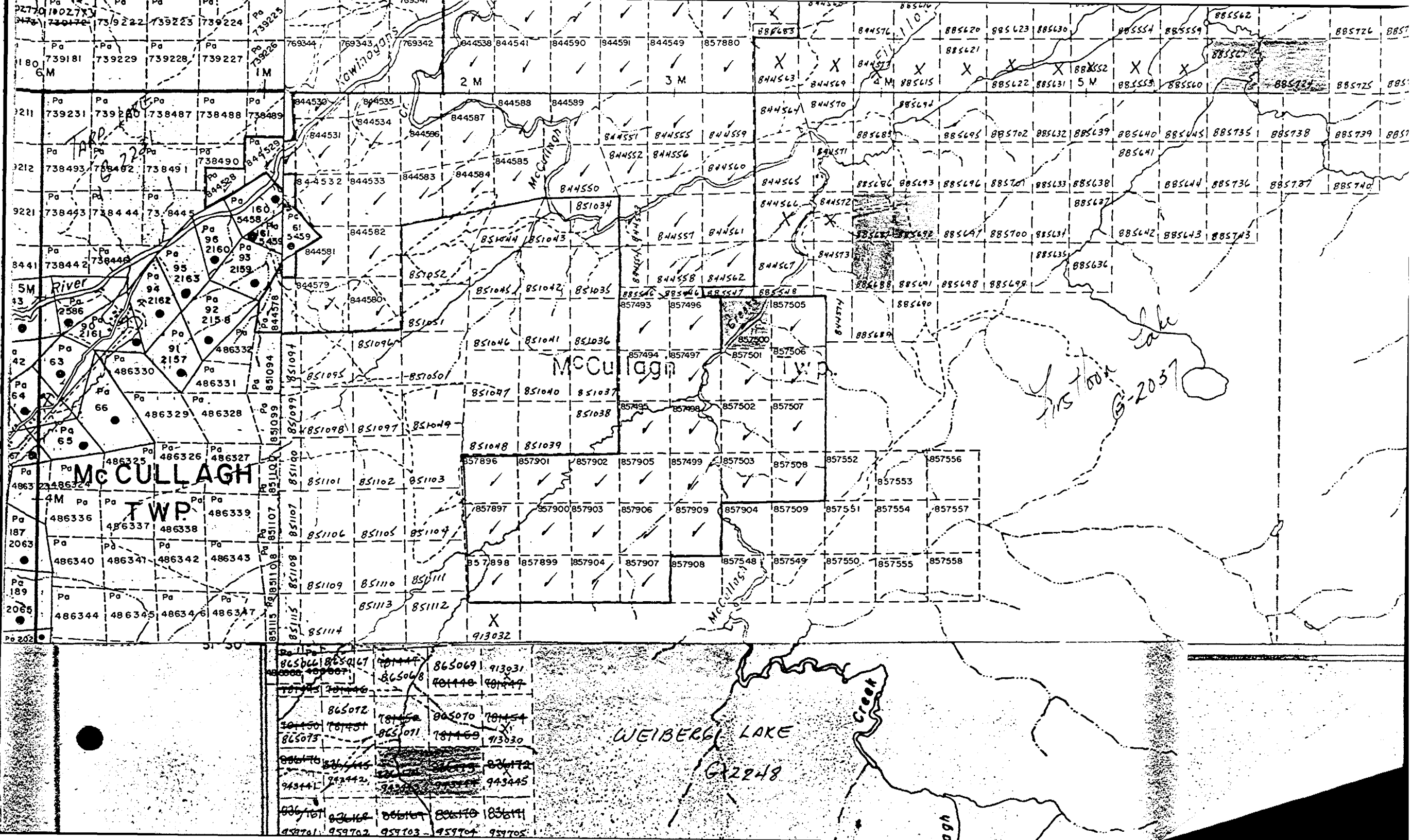
Certification Verifying Report of Work

I hereby certify that I have a personal and intimate knowledge of the facts set forth in the Report of Work annexed hereto, having performed the work or witnessed same during and/or after its completion and the annexed report is true.

Name and Postal Address of Person Certifying		
Date Certified	Certified by (Signature)	

Table of Information/Attachments Required by the Mining Recorder

Type of Work	Specific information per type	Other information (Common to 2 or more types)	Attachments
Manual Work	Nil	Names and addresses of men who performed manual work/operated equipment, together with dates and hours of employment.	Work Sketch: these are required to show the location and extent of work in relation to the nearest claim post.
Shaft Sinking, Drifting or other Lateral Work			
Compressed air, other power driven or mechanical equip.	Type of equipment	Names and addresses of owner or operator together with dates when drilling/stripping done.	
Power Stripping	Type of equipment and amount expended. Note: Proof of actual cost must be submitted within 30 days of recording.		
Diamond or other core drilling	Signed core log showing; footage, diameter of core, number and angles of holes.	Nil	Work Sketch (as above) in duplicate
Land Survey	Name and address of Ontario land surveyor.		Nil



Mc CULLAGH
TWP.

McCullagh TWP.

WEIBERGER LAKE
GX2248

S-2037

844530	844535	844587	844588	844589	844590	844591	844549	857880	885683	885684	885685	885686	885687
844531	844534	844586	844585	844584	844583	844532	844533	844582	885688	885689	885690	885691	885692
844532	844533	844583	844584	844585	844586	844534	844535	844587	885693	885694	885695	885696	885697
844533	844534	844584	844585	844586	844587	844535	844536	844588	885698	885699	885700	885701	885702
844534	844535	844585	844586	844587	844588	844536	844537	844589	885703	885704	885705	885706	885707
844535	844536	844586	844587	844588	844589	844537	844538	844590	885708	885709	885710	885711	885712
844536	844537	844587	844588	844589	844590	844538	844539	844591	885713	885714	885715	885716	885717
844537	844538	844588	844589	844590	844591	844539	844540	844592	885718	885719	885720	885721	885722
844538	844539	844589	844590	844591	844592	844540	844541	844593	885723	885724	885725	885726	885727
844539	844540	844590	844591	844592	844593	844541	844542	844594	885728	885729	885730	885731	885732
844540	844541	844591	844592	844593	844594	844542	844543	844595	885733	885734	885735	885736	885737
844541	844542	844592	844593	844594	844595	844543	844544	844596	885738	885739	885740	885741	885742
844542	844543	844593	844594	844595	844596	844544	844545	844597	885743	885744	885745	885746	885747
844543	844544	844594	844595	844596	844597	844545	844546	844598	885748	885749	885750	885751	885752
844544	844545	844595	844596	844597	844598	844546	844547	844599	885753	885754	885755	885756	885757
844545	844546	844596	844597	844598	844599	844547	844548	844600	885758	885759	885760	885761	885762
844546	844547	844597	844598	844599	844600	844548	844549	844601	885763	885764	885765	885766	885767
844547	844548	844598	844599	844600	844601	844549	844550	844602	885768	885769	885770	885771	885772
844548	844549	844599	844600	844601	844602	844550	844551	844603	885773	885774	885775	885776	885777
844549	844550	844600	844601	844602	844603	844551	844552	844604	885778	885779	885780	885781	885782
844550	844551	844601	844602	844603	844604	844552	844553	844605	885783	885784	885785	885786	885787
844551	844552	844602	844603	844604	844605	844553	844554	844606	885788	885789	885790	885791	885792
844552	844553	844603	844604	844605	844606	844554	844555	844607	885793	885794	885795	885796	885797
844553	844554	844604	844605	844606	844607	844555	844556	844608	885798	885799	885800	885801	885802
844554	844555	844605	844606	844607	844608	844556	844557	844609	885803	885804	885805	885806	885807
844555	844556	844606	844607	844608	844609	844557	844558	844610	885808	885809	885810	885811	885812
844556	844557	844607	844608	844609	844610	844558	844559	844611	885813	885814	885815	885816	885817
844557	844558	844608	844609	844610	844611	844559	844560	844612	885818	885819	885820	885821	885822
844558	844559	844609	844610	844611	844612	844560	844561	844613	885823	885824	885825	885826	885827
844559	844560	844610	844611	844612	844613	844561	844562	844614	885828	885829	885830	885831	885832
844560	844561	844611	844612	844613	844614	844562	844563	844615	885833	885834	885835	885836	885837
844561	844562	844612	844613	844614	844615	844563	844564	844616	885838	885839	885840	885841	885842
844562	844563	844613	844614	844615	844616	844564	844565	844617	885843	885844	885845	885846	885847
844563	844564	844614	844615	844616	844617	844565	844566	844618	885848	885849	885850	885851	885852
844564	844565	844615	844616	844617	844618	844566	844567	844619	885853	885854	885855	885856	885857
844565	844566	844616	844617	844618	844619	844567	844568	844620	885858	885859	885860	885861	885862
844566	844567	844617	844618	844619	844620	844568	844569	844621	885863	885864	885865	885866	885867
844567	844568	844618	844619	844620	844621	844569	844570	844622	885868	885869	885870	885871	885872
844568	844569	844619	844620	844621	844622	844570	844571	844623	885873	885874	885875	885876	885877
844569	844570	844620	844621	844622	844623	844571	844572	844624	885878	885879	885880	885881	885882
844570	844571	844621	844622	844623	844624	844572	844573	844625	885883	885884	885885	885886	885887
844571	844572	844622	844623	844624	844625	844573	844574	844626	885888	885889	885890	885891	885892
844572	844573	844623	844624	844625	844626	844574	844575	844627	885893	885894	885895	885896	885897
844573	844574	844624	844625	844626	844627	844575	844576	844628	885898	885899	885900	885901	885902
844574	844575	844625	844626	844627	844628	844576	844577	844629	885903	885904	885905	885906	885907
844575	844576	844626	844627	844628	844629	844577	844578	844630	885908	885909	885910	885911	885912
844576	844577	844627	844628	844629	844630	844578	844579	844631	885913	885914	885915	885916	885917
844577	844578	844628	844629	844630	844631	844579	844580	844632	885918	885919	885920	885921	885922
844578	844579	844629	844630	844631	844632	844580	844581	844633	885923	885924	885925	885926	885927
844579	844580	844630	844631	844632	844633	844581	844582	844634	885928	885929	885930	885931	885932
844580	844581	844631	844632	844633	844634	844582	844583	844635	885933	885934	885935	885936	885937
844581	844582	844632	844633	844634	844635	844583	844584	844636	885938	885939	885940	885941	885942
844582	844583	844633	844634	844635	844636	844584	844585	844637	885943	885944	885945	885946	885947
844583	844584	844634	844635	844636	844637	844585	844586	844638	885948	885949	885950	885951	885952
844584	844585	844635	844636	844637	844638	844586	844587	844639	885953	885954	885955	885956	885957
844585	844586	844636	844637	844638	844639	844587	844588	844640	885958	885959	885960	885961	885962
844586	844587	844637	844638	844639	844640	844588	844589	844641	885963	885964	885965	885966	885967
844587	844588	844638	844639	844640	844641	844589	844590	844642	885968	885969	885970	885971	885972
844588	844589	844639	844640	844641	844642	844590	844591	844643	885973	885974	885975	885976	885977
844589	844590	844640	844641	844642	844643	844591	844592	844644	885978	885979	885980	885981	885982
844590	844591	844641	844642	844643	844644	844592	844593	844645	885983	885984	885985	885986	885987
844591	844592	844642	844643	844644	844645	844593	844594	844646	885988	885989	885990	885991	885992
844592	844593	844643	844644	844645	844646	844594	844595	844647	885993	885994	885995	885996	885997
844593	844594	844644	844645	844646	844647	844595	844596	844648	885998	885999	886000	886001	886002
844594	844595	844645	844646	844647	844648	844596	844597	844649	886003	886004	886005	886006	886007
844595	844596	844646	844647	844648	844649	844597	844598	844650	886008	886009	886010	886011	886012
844596	844597	844647	844648	844649	844650	844598	844599	844651	886013	886014	886015	886016	886017
844597	844598	844648	844649	844650	844651	844599	844600	844652	886018	886019	886020	886021	886022
844598	844599	844649	844650	844651	844652	844600	844601	844653	886023	886024	886025	886026	886027
844599	844600	844650	844651	844652	844653	844601	844602	844654	886028	886029	886030	886031	886032
844600	844601	844651	844652	844653	844654	844602	844603	844655	886033	886034	886035	886036	886037
844601	844602	844652	844653	844654	844655	844603	844604	844656	886038	886039	886040	886041	886042
844602	844603	844653	844654	844655	844656	844604	844605	844657	886043	886044	886045	886046	886047
844603	844604	844654	844655	844656	844657	844605	844606	844658	886048	886049	8860		