



53C13NE0001 2.4149 SETTING NET LAKE

010

RECEIVED

MAR 5 1982

MINING LANDS SECTION

REPORT ON THE AIRBORNE
MAGNETOMETER SURVEY
FAVOURABLE LAKE AREA,
ONTARIO
FOR
GETTY CANADIAN METALS, LIMITED

N.T.S. 53C/13

F.S. Grant, Ph.D.
Consulting Geophysicist

REPORT ON MAGNETOMETER SURVEY
FAVOURABLE LAKE AREA, ONTARIO

Introduction

A helicopter-borne magnetometer survey covering a block 6 km x 7.5 km south and east of South Trout Lake in the Favourable Lake region of northwestern Ontario was carried out for Getty Mines Limited during the period February 7-9, 1981. A total of approximately 900 kilometers was flown along a NS and EW flight-line grid, using an average line spacing of 100 metres in both directions. Instrument specifications are given in Appendix I. Horizontal positioning was performed by Mini-Ranger range-range radar.

559 miles
1.6 K
~~6.2~~
30/3/81
30/3/81
30/3/81

The purpose of the magnetometer survey was to refine the geological mapping of the area, particularly in regions that are covered with overburden.

Geology

The survey block is underlain with early precambrian metavolcanic and metasedimentary rocks which have been extensively intruded by sills of metagabbro. The metavolcanic sequence consists of pillowed to massive mafic flows, with minor intermediate and felsic metatuff and meta-agglomerate. The metasediments are dominantly metaconglomerate, graywacke and slate. The metagabbro has been locally altered

to talc-carbonate schist, and contains several serpentinite layers. The sequence is bounded to the northeast and west by intrusive, granitic masses. Numerous showings of gold, copper, zinc, lead, silver and arsenopyrite have been found within the survey block and surrounding terrain. A mine that was operated until 1948 by Berens River Mines Limited is located in the south-central part of the area.

Interpretation

A detailed lithological and structural interpretation of the magnetometer data has been carried out with the help of Ontario Department of Mines Preliminary Geological Maps No. P-422 and No. P-538 (revised) at 1 inch = $\frac{1}{4}$ mile by L. D. Ayres (1967, 1970).

The magnetic contours outline the edges of the South Trout Lake metagabbro sill and associated serpentinite bodies very distinctly. The sill crosses the map area in a southeasterly direction without any major break. North-south and north-northeast faulting has been inferred from offsets in the magnetic contour patterns, and generally agrees with faults which have been mapped. The faults appear to be associated with the metagabbro unit.

The metagabbro appears to be flanked on both sides by mafic, intermediate and felsic metavolcanic rocks and associated metasediments. A number of unmapped metagabbro sills can

be recognized within the metavolcanic units from their magnetic expression. Granitic rocks, forming the edges of the metavolcanic-metasedimentary belt are recognizable at the northeast and southwest corners of the survey block contacts between the granites and the greenstones are quite distinct.

There are no important discrepancies between the mapped geology and the magnetics. Using outcrop information as a control, a detailed lithological and structural map of the survey area has been prepared from the magnetic contours which agrees in all important respects with existing geological map, but which has positioned the geological boundaries with greater accuracy.

Respectfully submitted,

AERODAT LIMITED

A handwritten signature in dark ink, appearing to read 'F. S. Grant', with a stylized flourish at the end.

F. S. Grant, Ph.D.
Consulting Geophysicist

APPENDIX I
INSTRUMENTATION

Aircraft: Bell Jet Ranger

Pilot: M. Watt

Survey dates: February 7-9, 1981

Magnetometer: Barringer Research Limited
AM-104, proton

Cycle time: 1.0 second

Sensitivity: 1 nanotesla

Horizontal positioning: Mini-Ranger

Accuracy: ± 5 metres

Vertical positioning: Hoffman
radar altimeter

Accuracy: ± 2 metres

South

Trout

LEGEND



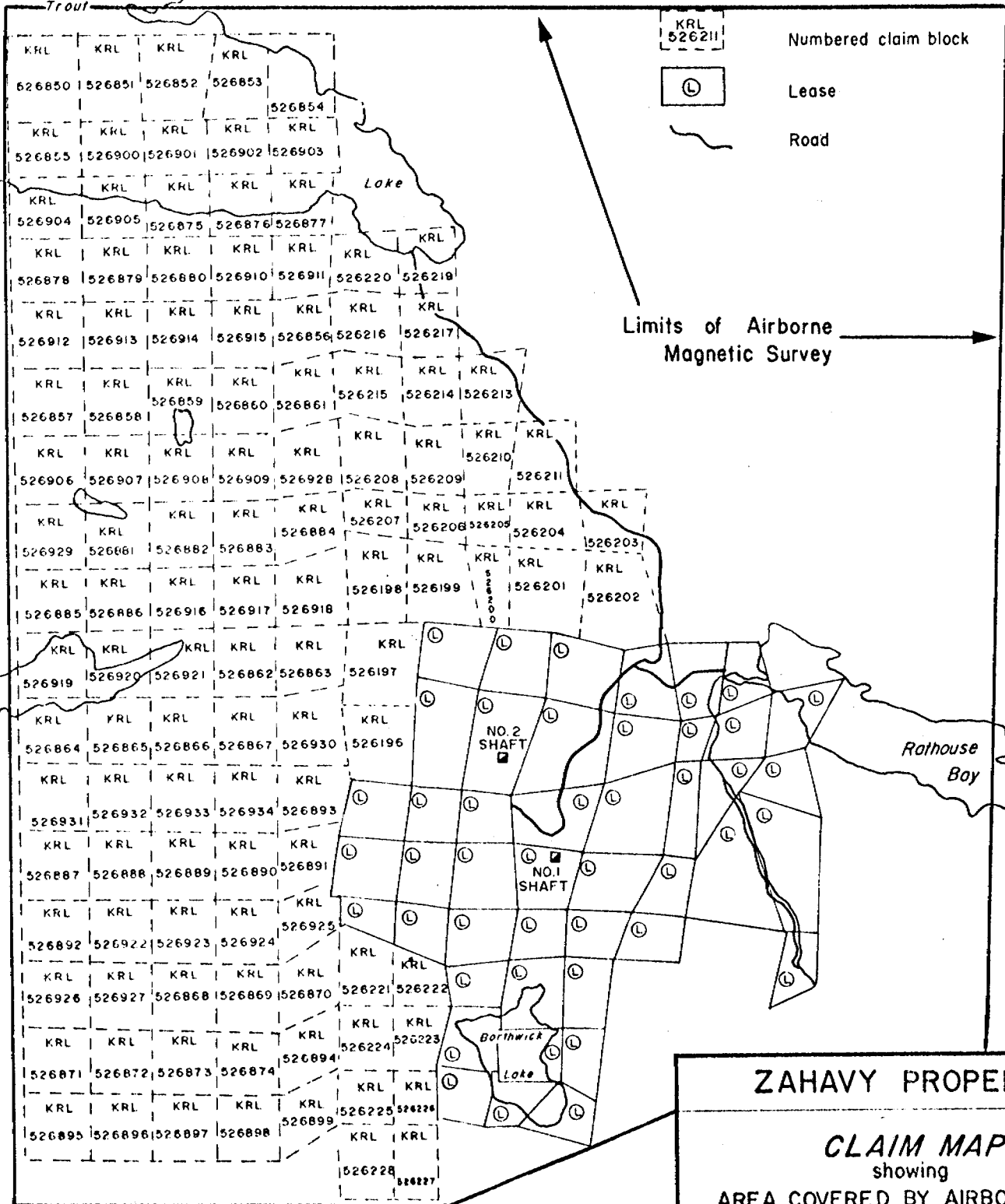
Numbered claim block



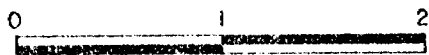
Lease



Road



Limits of Airborne
Magnetic Survey



Kilometers

ZAHAVY PROPERTY

CLAIM MAP
showing
AREA COVERED BY AIRBORNE
MAGNETIC SURVEY



DRAWN BY: PD
CHECKED BY:
NTS 53-C

DATE: MAY 1981
DRAWING NO: 2033-200
SCALE: 1:10,520

Getty Canadian Metals, Ltd.

541007 - 542026

= 20 claims

580418 - 580421

= 4 claims

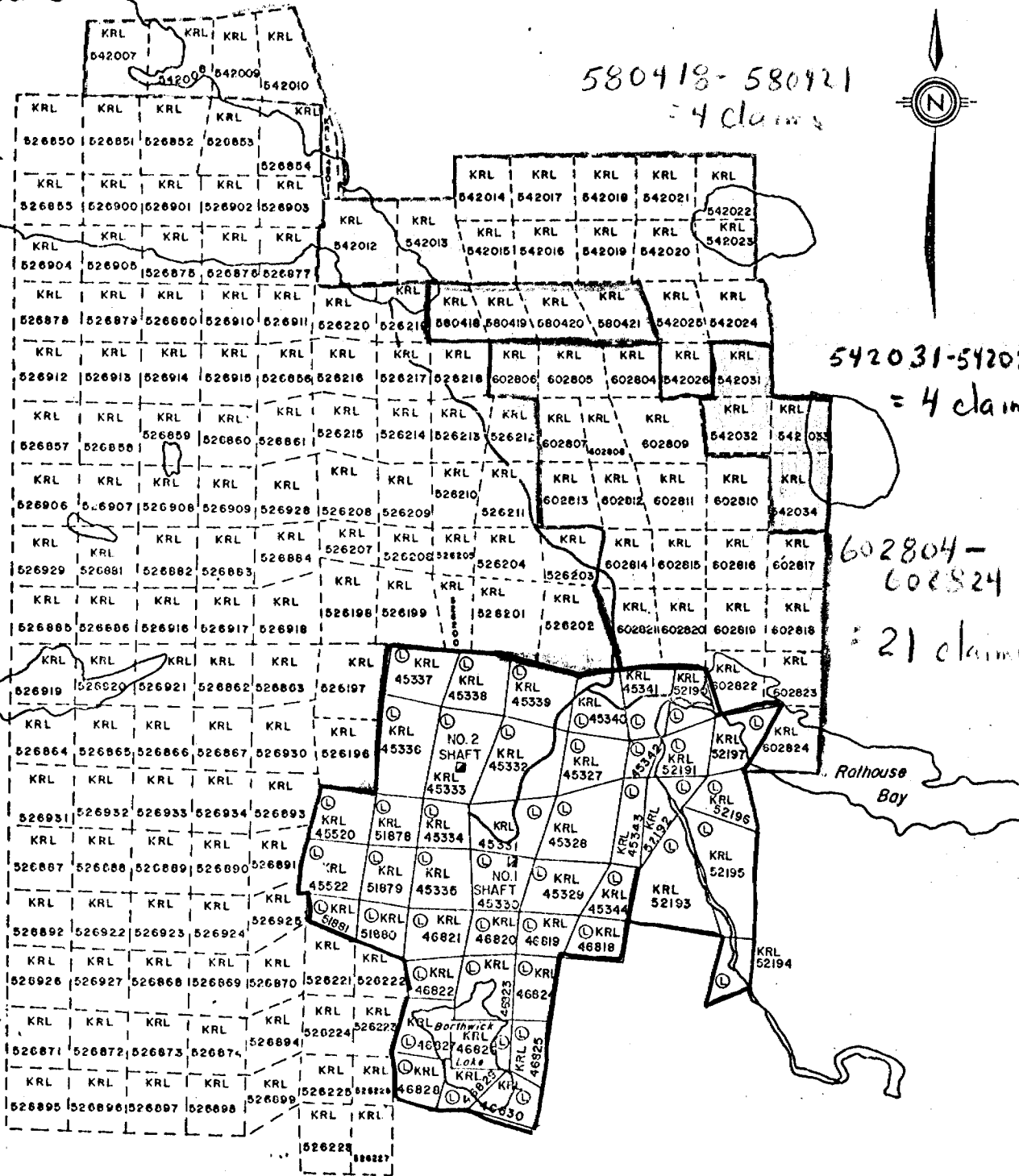
542031 - 542034


= 4 claims

602804 - 602824

= 21 claims

South Trout Lake



ZAHAVY PROPERTY	
CLAIM MAP	
FAVOURABLE LAKE VOLCANIC BELT	
ONTARIO	
	DRAWN BY: V.K. CHECK'D BY: NTS:
DATE: OCT 8/81 DRAW'G No: SCALE:	
Getty Canadian Metals, Ltd.	

KRL KRL KRL KRL
542007 542008 542009 542010

KRL KRL KRL KRL
526850 526851 526852 526853

KRL KRL KRL KRL
526854 526855 526900 526901 526902 526903

KRL KRL KRL KRL
526904 526905 526875 526876 526877

KRL KRL KRL KRL
526878 526879 526880 526910 526911

KRL KRL KRL KRL
526912 526913 526914 526915 526856 526216

KRL KRL KRL KRL
526857 526858 526859 526860 526861

KRL KRL KRL KRL
526906 526907 526908 526909 526928 526208 526209

KRL KRL KRL KRL
526929 526881 526882 526883 526884 526207 526208 526209

KRL KRL KRL KRL
526885 526886 526916 526917 526918 526198 526199

KRL KRL KRL KRL
526919 526920 526921 526862 526863 526197

KRL KRL KRL KRL
526864 526865 526866 526867 526930 526196

KRL KRL KRL KRL
526931 526932 526933 526934 526893

KRL KRL KRL KRL
526887 526888 526889 526890 526891

KRL KRL KRL KRL
526892 526922 526923 526924 526921

KRL KRL KRL KRL
526926 526927 526868 526869 526870 526221 526222

KRL KRL KRL KRL
526871 526872 526873 526874 526894

KRL KRL KRL KRL
526895 526896 526897 526898 526899

KRL KRL KRL KRL
526899 526225 526226

KRL KRL
526228 526227

KRL KRL KRL KRL
542014 542017 542018 542021

KRL KRL KRL KRL
542012 542013 542015 542016 542019 542020

KRL KRL KRL KRL
526220 526219 580418 580419 580420 580421 542025 542024

KRL KRL KRL KRL
526217 526218 602806 602805 602804 542026 542031

KRL KRL KRL KRL
526215 526214 526213 526212 602807 602808 602809 542032 542033

KRL KRL KRL KRL
526210 526211 602813 602812 602811 602810 542034

KRL KRL KRL KRL
526204 526203 602814 602815 602816 602817

KRL KRL KRL KRL
526201 526202 602821 602820 602819 602818

KRL KRL
602822 602823

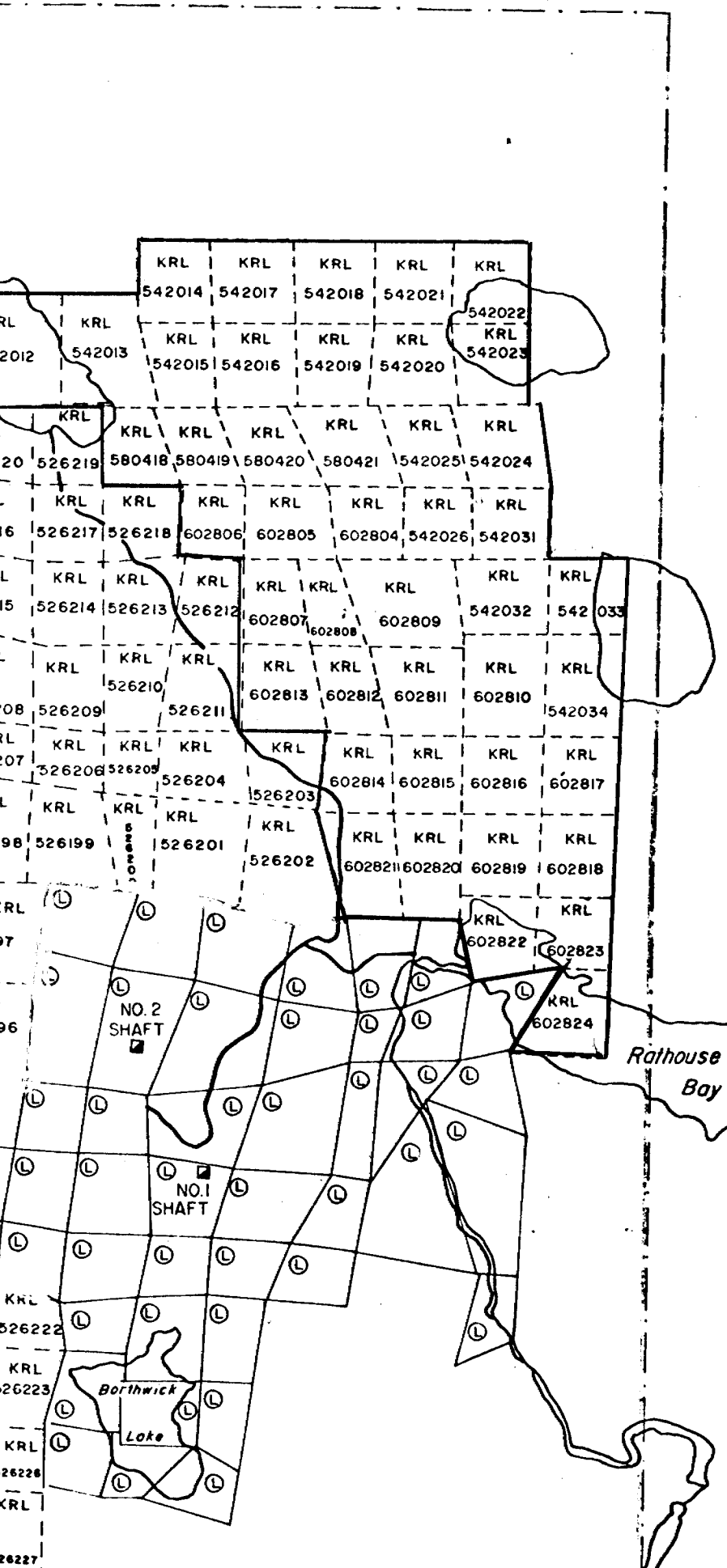
KRL KRL
602824

NO. 2
SHAFT

NO. 1
SHAFT

Borthwick
Lake

Rathouse
Bay





020

RECEIVED

SEP 21 1981

MINING LANDS SECTION

REPORT ON THE AIRBORNE
MAGNETOMETER SURVEY
FAVOURABLE LAKE AREA,
ONTARIO
FOR
GETTY CANADIAN METALS, LIMITED

N.T.S. 53C/13

F.S. Grant, Ph.D.
Consulting Geophysicist

REPORT ON MAGNETOMETER SURVEY
FAVOURABLE LAKE AREA, ONTARIO

Introduction

A helicopter-borne magnetometer survey covering a block 6 km x 7.5 km south and east of South Trout Lake in the Favourable Lake region of northwestern Ontario was carried out for Getty Mines Limited during the period February 7-9, 1981. A total of approximately 900 kilometers was flown along a NS and EW flight-line grid, using an average line spacing of 100 metres in both directions. Instrument specifications are given in Appendix I. Horizontal positioning was performed by Mini-Ranger range-range radar.

The purpose of the magnetometer survey was to refine the geological mapping of the area, particularly in regions that are covered with overburden.

Geology

The survey block is underlain with early precambrian metavolcanic and metasedimentary rocks which have been extensively intruded by sills of metagabbro. The metavolcanic sequence consists of pillowed to massive mafic flows, with minor intermediate and felsic metatuff and meta-agglomerate. The metasediments are dominantly metaconglomerate, graywacke and slate. The metagabbro has been locally altered

to talc-carbonate schist, and contains several serpentinite layers. The sequence is bounded to the northeast and west by intrusive, granitic masses. Numerous showings of gold, copper, zinc, lead, silver and arsenopyrite have been found within the survey block and surrounding terrain. A mine that was operated until 1948 by Berens River Mines Limited is located in the south-central part of the area.

Interpretation

A detailed lithological and structural interpretation of the magnetometer data has been carried out with the help of Ontario Department of Mines Preliminary Geological Maps No. P-422 and No. P-538 (revised) at 1 inch = $\frac{1}{4}$ mile by L. D. Ayres (1967, 1970).

The magnetic contours outline the edges of the South Trout Lake metagabbro sill and associated serpentinite bodies very distinctly. The sill crosses the map area in a southeasterly direction without any major break. North-south and north-northeast faulting has been inferred from offsets in the magnetic contour patterns, and generally agrees with faults which have been mapped. The faults appear to be associated with the metagabbro unit.

The metagabbro appears to be flanked on both sides by mafic, intermediate and felsic metavolcanic rocks and associated metasediments. A number of unmapped metagabbro sills can

be recognized within the metavolcanic units from their magnetic expression. Granitic rocks, forming the edges of the metavolcanic-metasedimentary belt are recognizable at the northeast and southwest corners of the survey block contacts between the granites and the greenstones are quite distinct.

There are no important discrepancies between the mapped geology and the magnetics. Using outcrop information as a control, a detailed lithological and structural map of the survey area has been prepared from the magnetic contours which agrees in all important respects with existing geological map, but which has positioned the geological boundaries with greater accuracy.

Respectfully submitted,

AERODAT LIMITED



F. S. Grant, Ph.D.
Consulting Geophysicist

APPENDIX I
INSTRUMENTATION

Aircraft: Bell Jet Ranger

Pilot: M. Watt

Survey dates: February 7-9, 1981

Magnetometer: Barringer Research Limited
AM-104, proton

Cycle time: 1.0 second

Sensitivity: 1 nanotesla

Horizontal positioning: Mini-Ranger

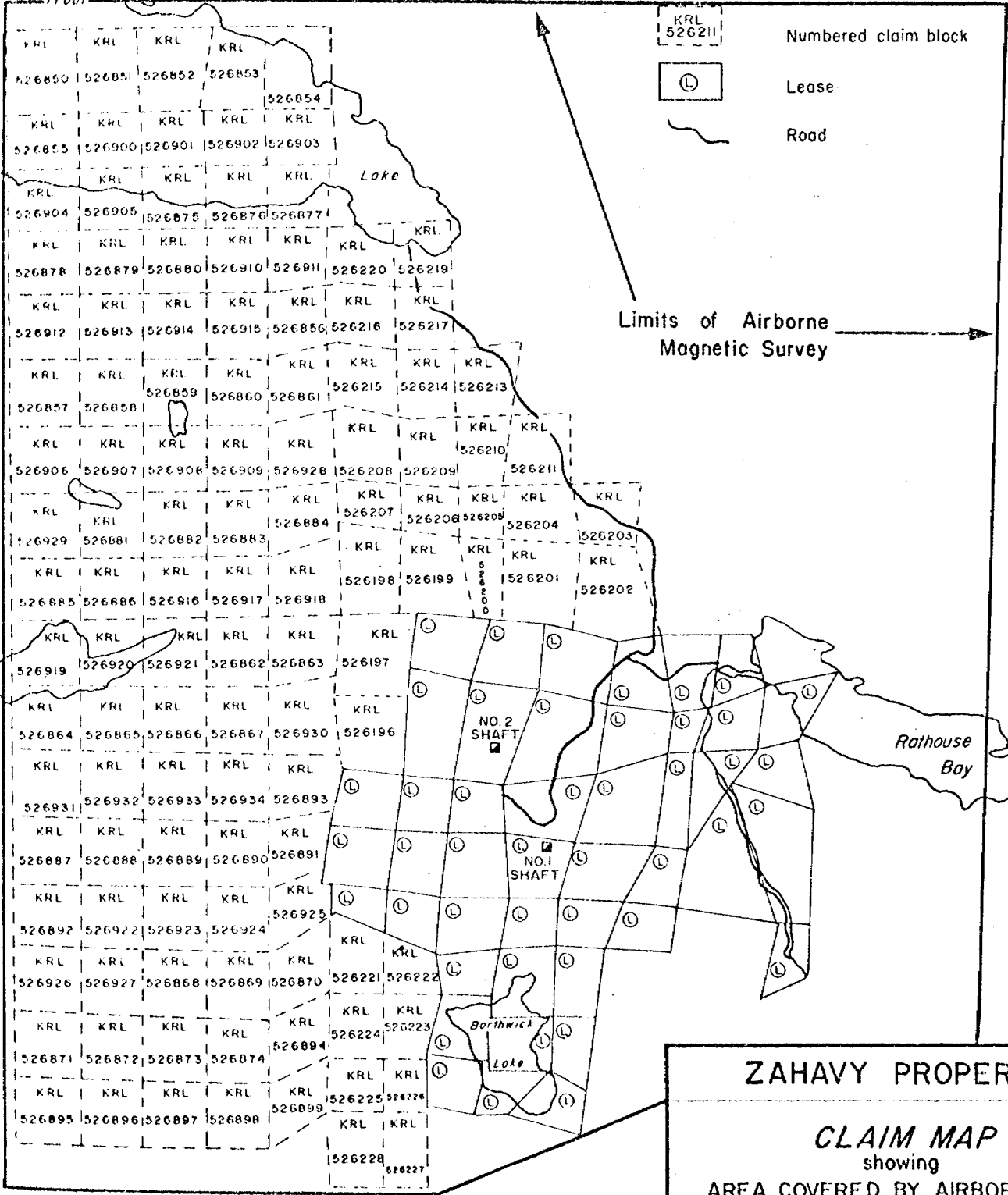
Accuracy: ± 5 metres

Vertical positioning: Hoffman
radar altimeter

Accuracy: ± 2 metres

South

LEGEND



KRL
526211

Numbered claim block

(L)

Lease

~

Road

Limits of Airborne
Magnetic Survey

NO. 2
SHAFT

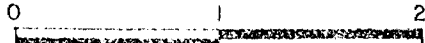
NO. 1
SHAFT

Rathouse
Bay

Borthwick
Lake

ZAHAVY PROPERTY

CLAIM MAP
showing
AREA COVERED BY AIRBORNE
MAGNETIC SURVEY

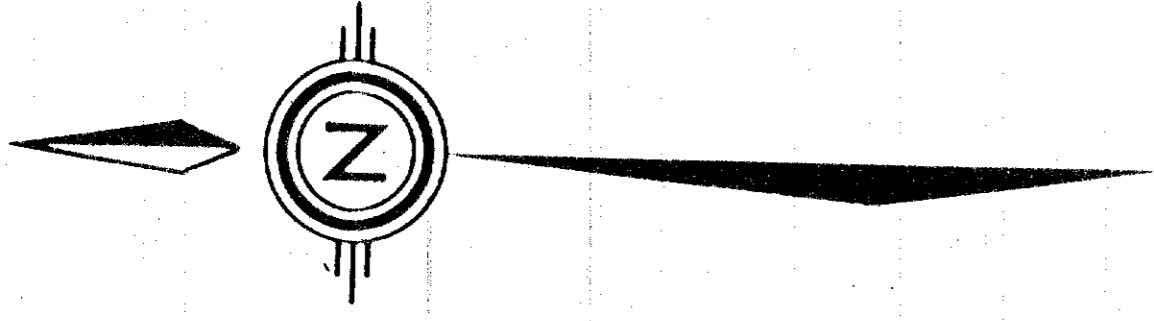


Kilometers

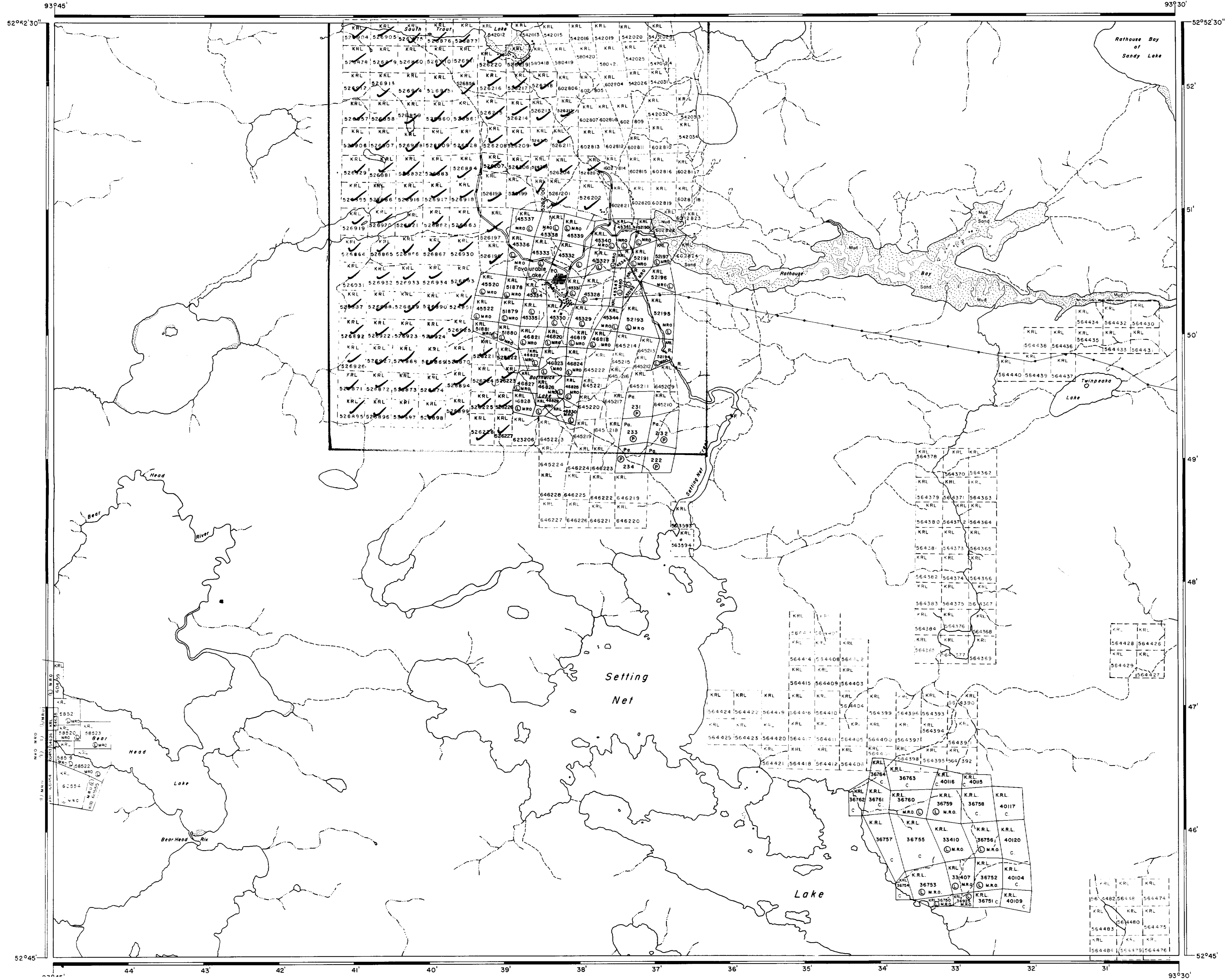


DRAWN BY: PD	DATE: MAY 1981
CHECKED BY: NTS 53-C	DRAWING NO: 2033-200
	SCALE: 1:10,520

Getty Canadian Metals, Ltd.



North Trout Lake Area - M.2883



Favourable Lake (South part) - M.2881

Northwind Lake Area - M.2885

AREA OF

SETTING NET LAKE

DISTRICT OF KENORA
PATRICIA PORTION

RED LAKE MINING DIVISION

SCALE: 1-INCH = 40 CHAINS

LEGEND

- | | |
|-----------------------|--------|
| PATENTED LAND | ⊙ |
| CROWN LAND SALE | C.S. |
| LEASES | Ⓛ |
| LOCATED LAND | Loc. |
| LICENSE OF OCCUPATION | L.O. |
| MINING RIGHTS ONLY | M.R.O. |
| SURFACE RIGHTS ONLY | S.R.O. |
| ROADS | — |
| IMPROVED ROADS | — |
| KING'S HIGHWAYS | — |
| RAILWAYS | — |
| POWER LINES | — |
| MARSH OR MUSKOG | — |
| MINES | — |
| CANCELLED | C. |

NOTES

400' Surface Rights Reservation along the shores of all lakes and rivers.

DATE OF ISSUE
AUG 12 1982
Ministry of Natural Resources
TORONTO

24149

NATIONAL TOPOGRAPHIC SERIES 53C13

PLAN NO. M.2199

ONTARIO
MINISTRY OF NATURAL RESOURCES
SURVEYS AND MAPPING BRANCH

Setting Net Creek Area - M.3069



AREA OF
NORTH TROUT LAKE

DISTRICT OF
KENORA
 PATRICIA PORTION

RED LAKE
 MINING DIVISION

SCALE: 1-INCH = 40 CHAINS

LEGEND

- PATENTED LAND Ⓟ
- CROWN LAND SALE CS
- LEASES L
- LOCATED LAND Lo
- LEASE OF OCCUPATION LO
- MINING RIGHTS ONLY MRO
- SURFACE RIGHTS ONLY SRO
- ROADS —
- IMPROVED ROADS —
- KING'S HIGHWAYS —
- RAILWAYS —
- POWER LINES —
- MARSH OR MUSKEG —
- MINES X
- CANCELLED C

NOTES

400' Surface Rights Reservation around
 all lakes and rivers.

2.4149

DATE OF ISSUE
AUG 12 1982
 Ministry of Natural Resources
 TORONTO

NATIONAL TOPOGRAPHIC SERIES 53 C

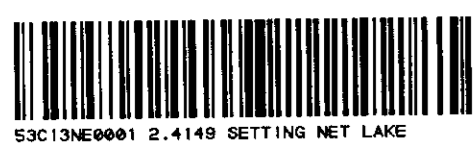
PLAN NO. **M.2883**

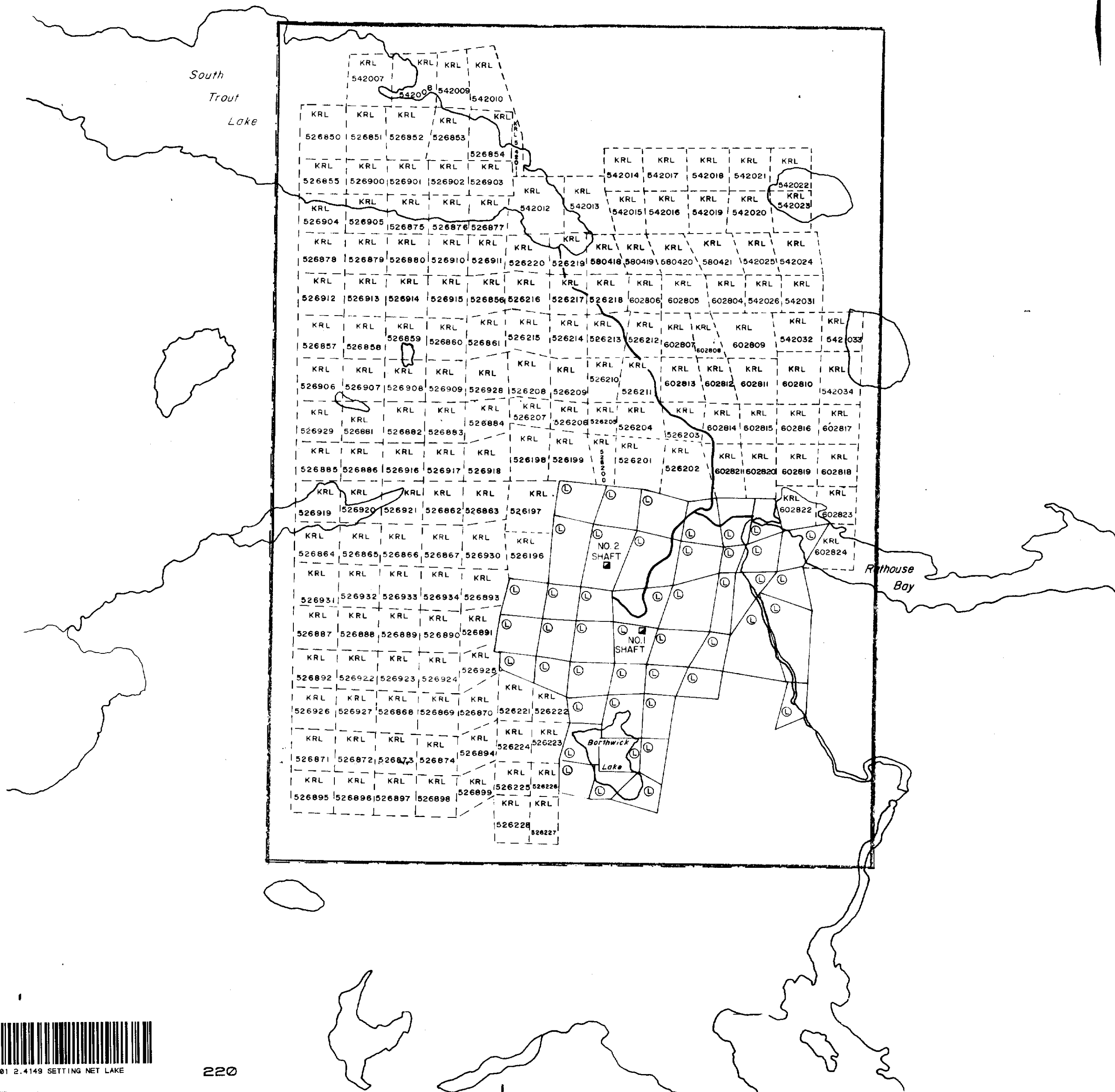
ONTARIO
 MINISTRY OF NATURAL RESOURCES
 SURVEYS AND MAPPING BRANCH

Favourable Lake (North part) - M.2880


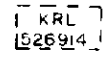
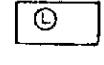

Rathouse Bay of Sandy Lake - M.2884

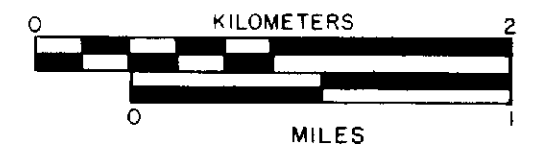
Setting Net Lake Area - M.2199





LEGEND

-  Approximate area covered by airborne survey
-  Numbered claim block
-  Lease
-  Road



ZAHAVY PROPERTY

CLAIM MAP

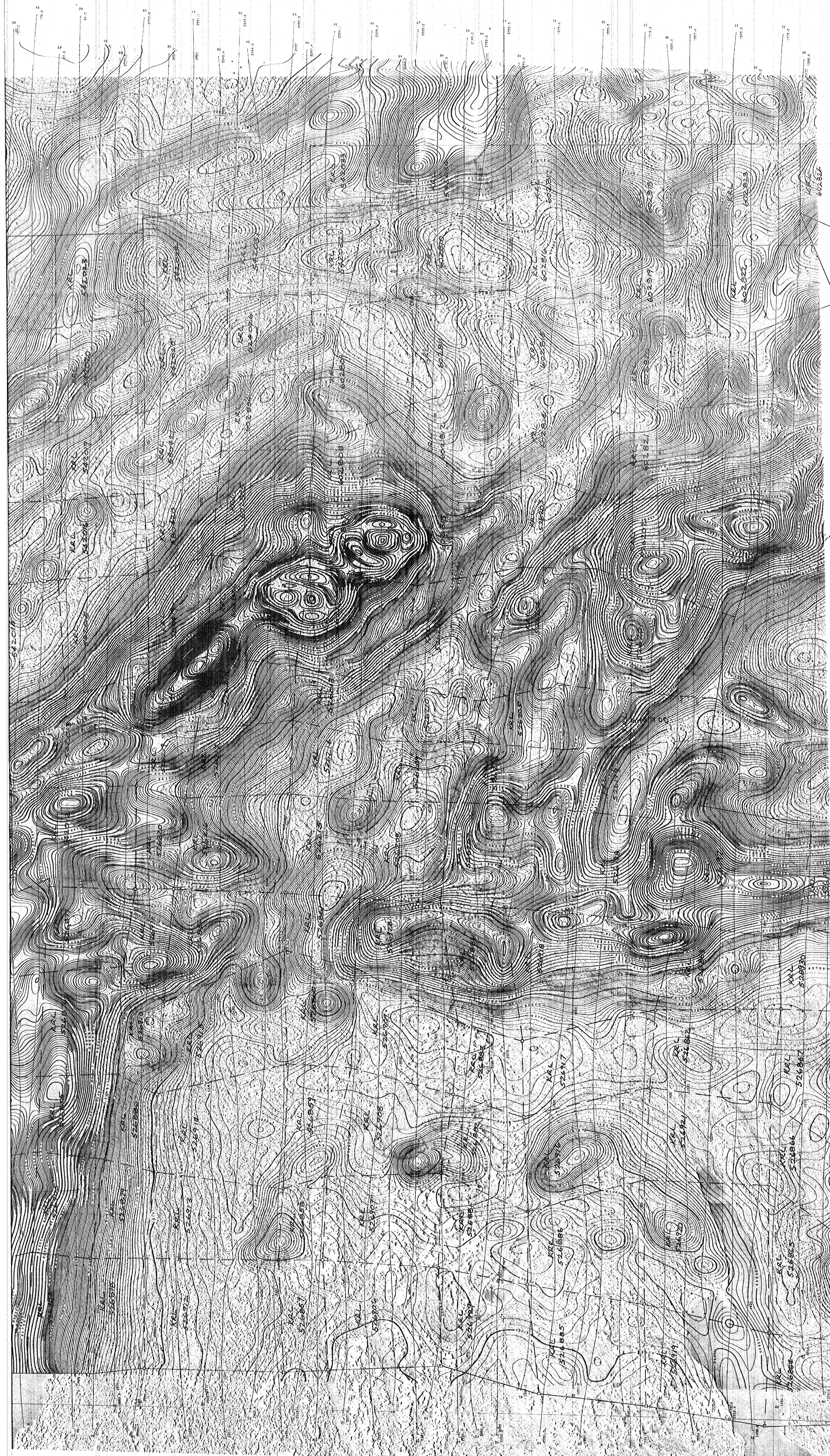
FAVOURABLE LAKE VOLCANIC BELT

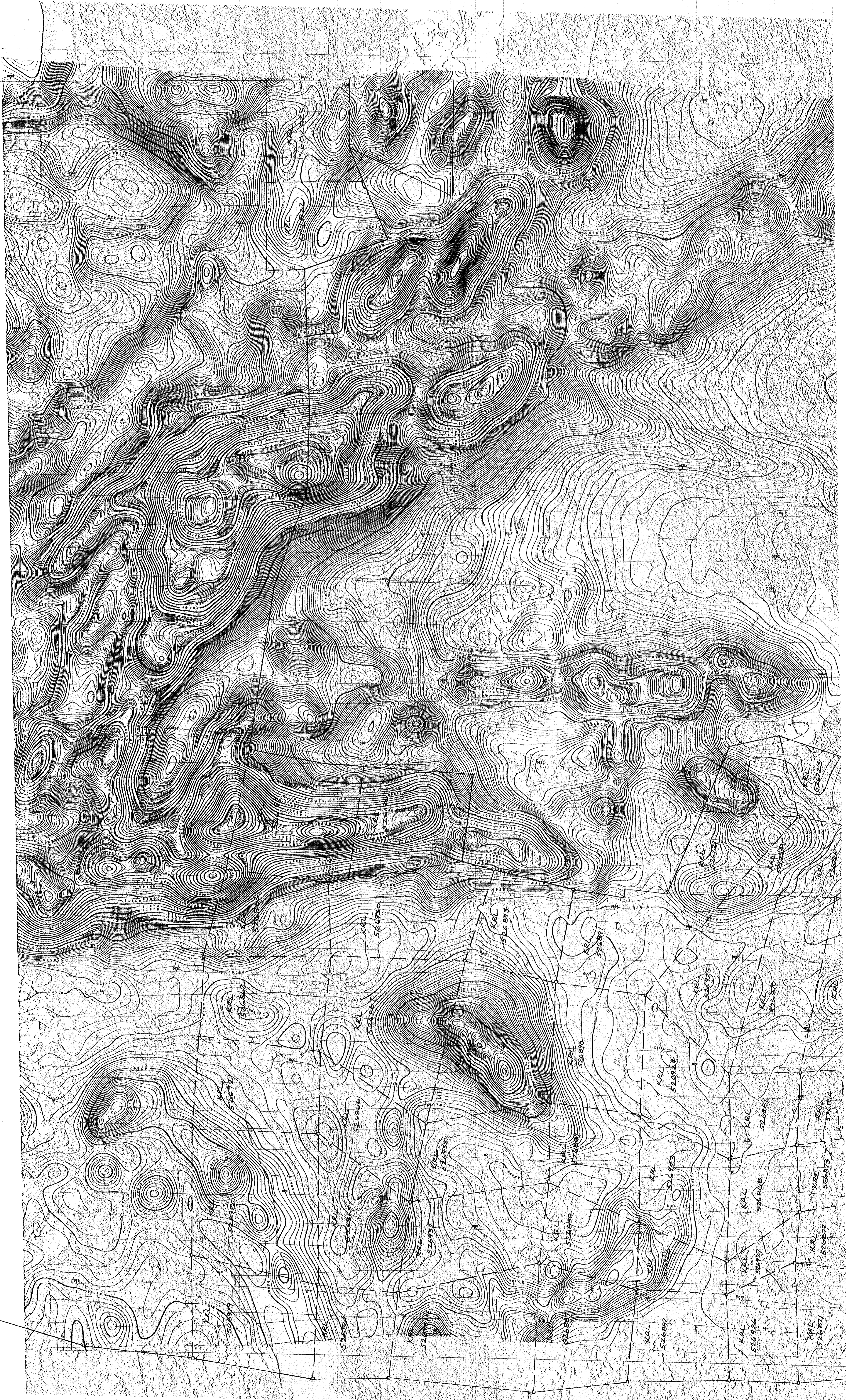
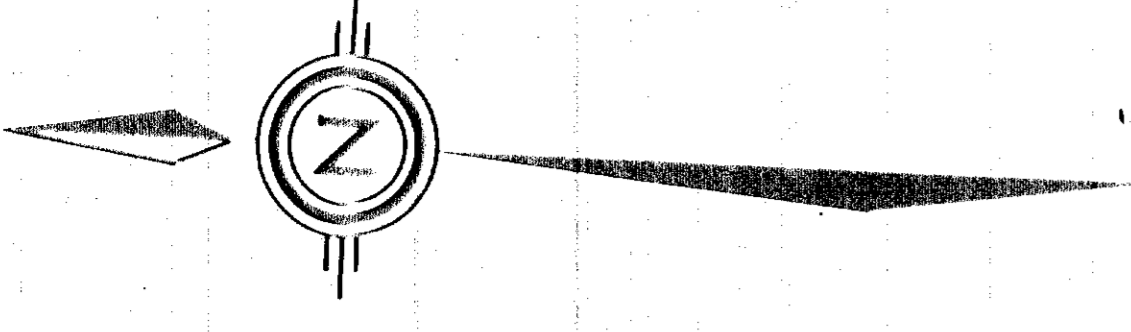
ONTARIO

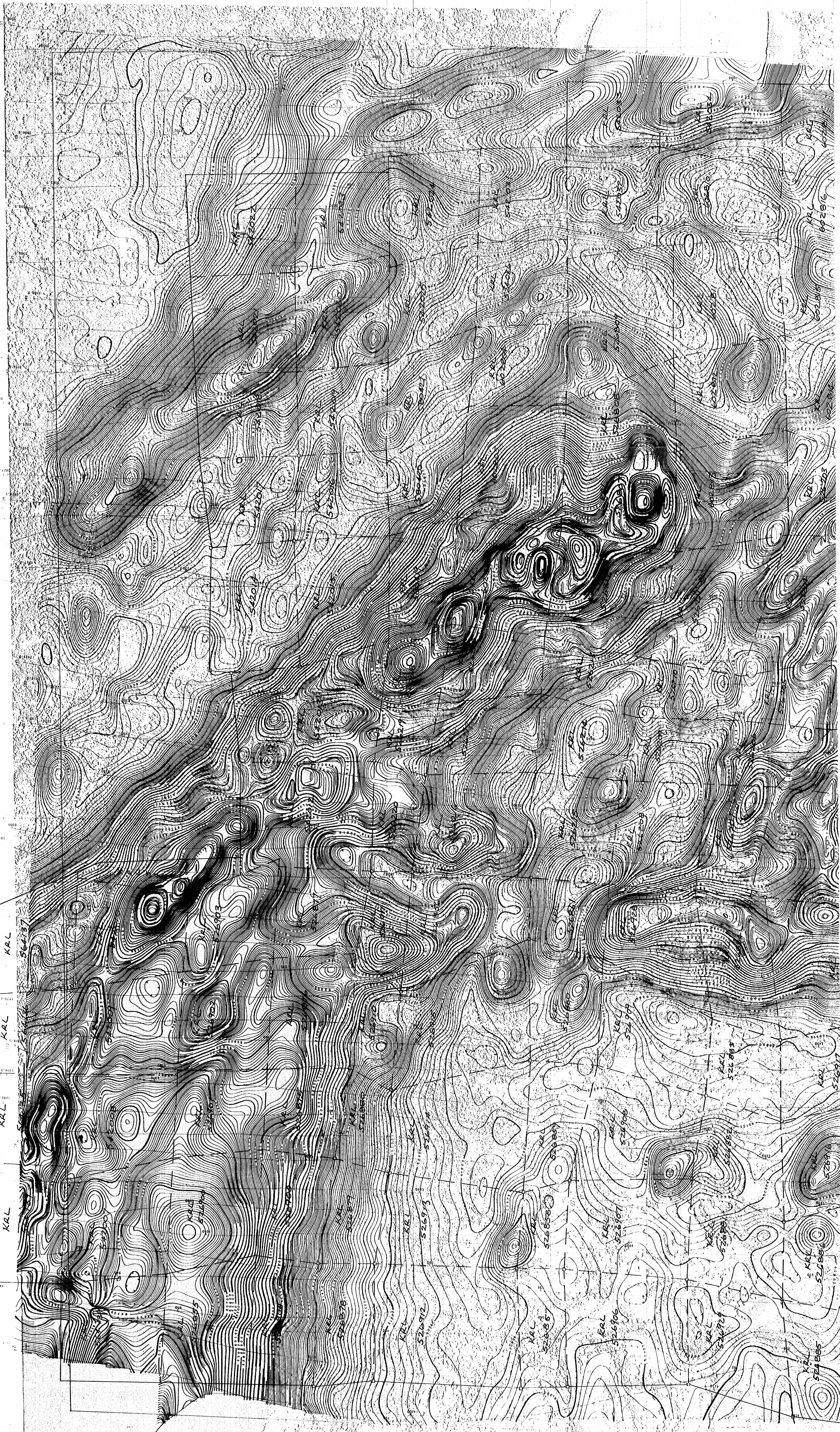
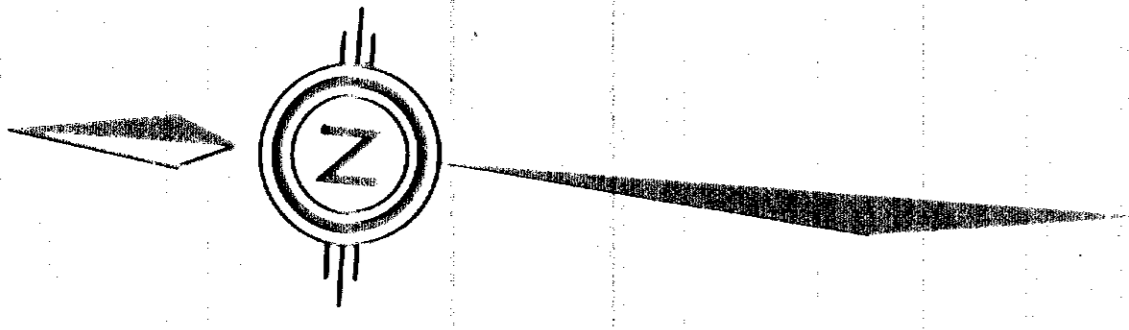
DRAWN BY: PD	DATE: SEPT. 30, 1980
CHECK'D BY:	DRAW'G No: 2033-200
N.T.S.: 53C	SCALE: 1:31,680

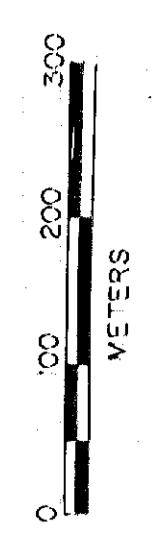
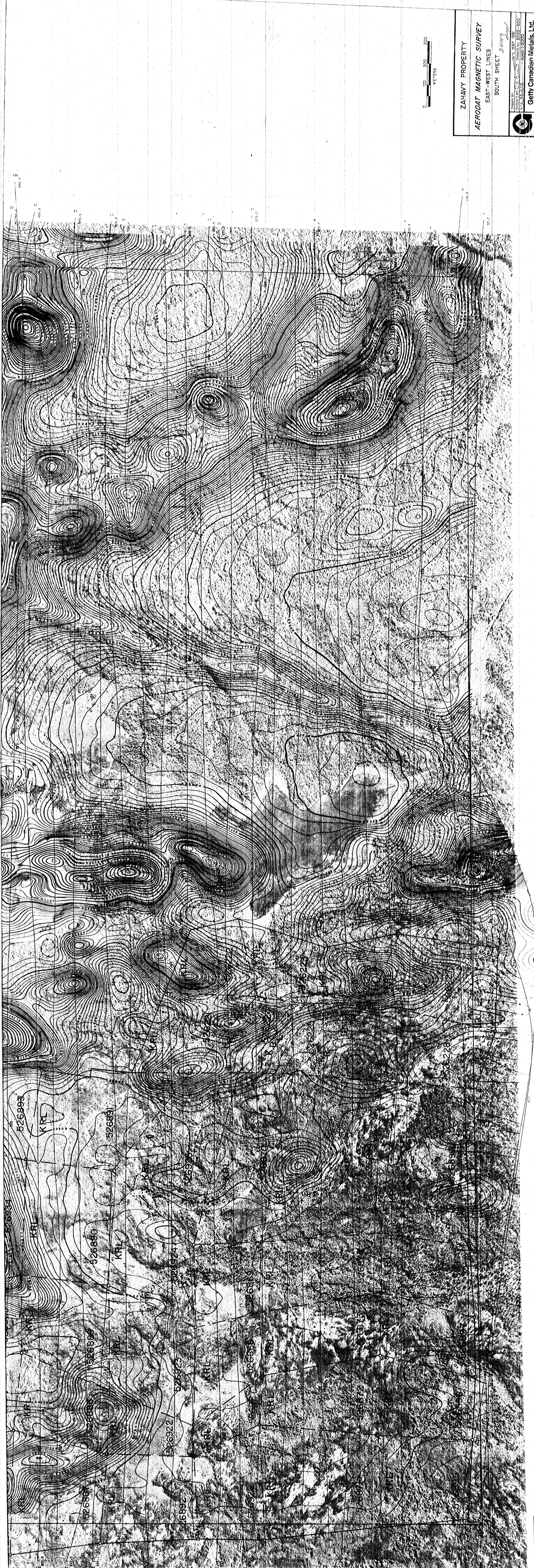
Getty Canadian Metals, Ltd.





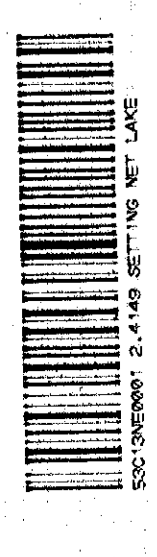


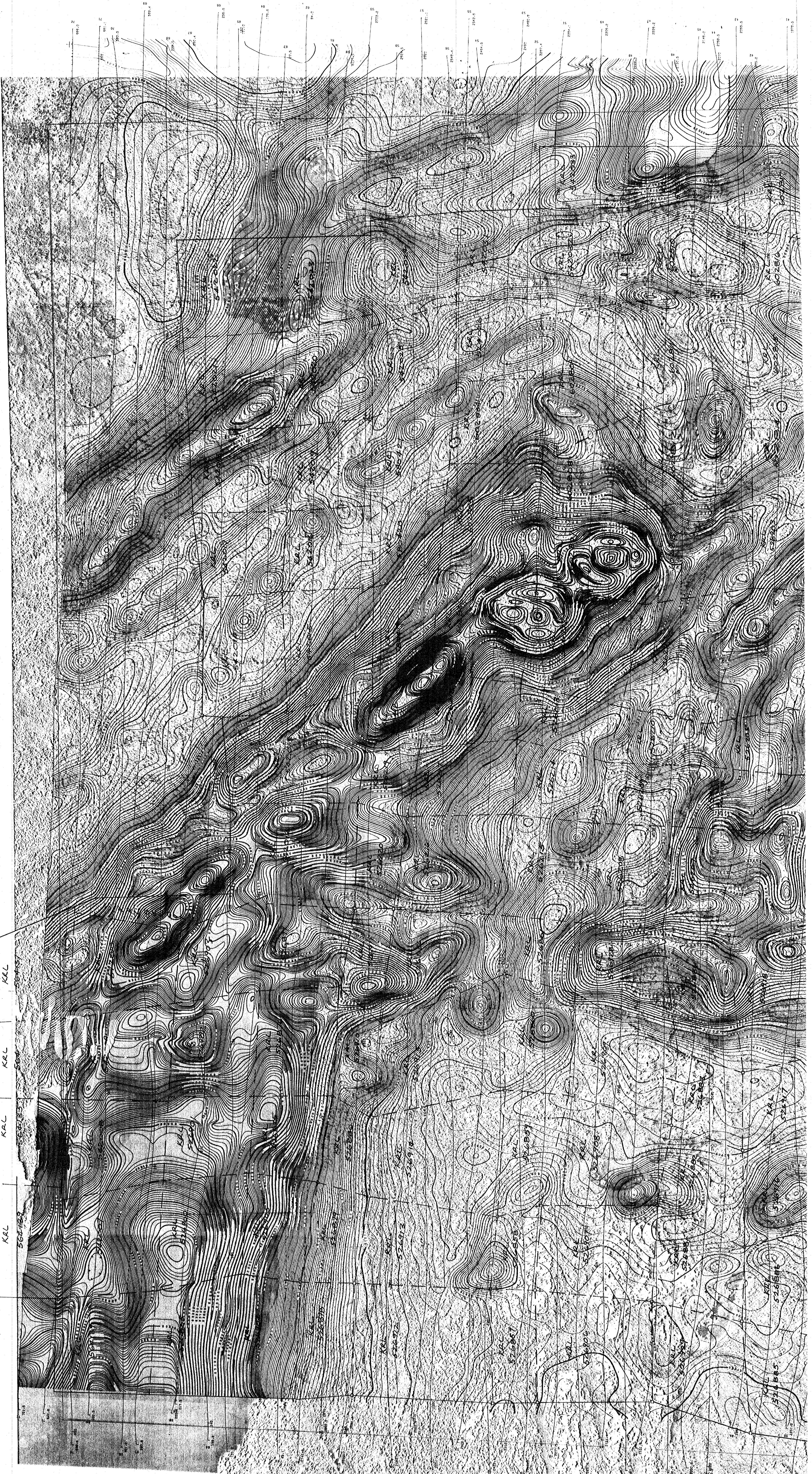
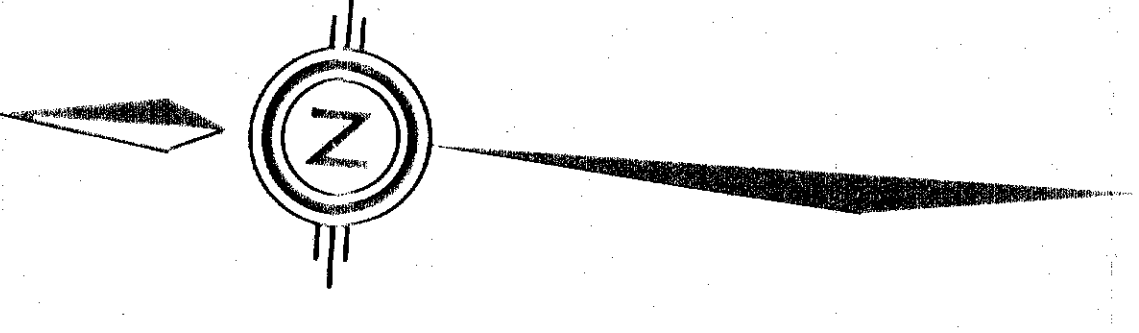




ZAHAVY PROPERTY
 AERODAT MAGNETIC SURVEY
 EAST-WEST LINES
 SOUTH SHEET

DATE: MAY 1987
 DRAWN BY: R. H. G. [Signature]
 CHECKED BY: [Signature]
 SCALE: 1:50,000
 GETTY CANADIAN METALS, LTD.





KAL

KAL

KAL

KAL

KAL
5205860

KAL
5205867

KAL
5205874

KAL
5205881

KAL
5205888

KAL
5205895

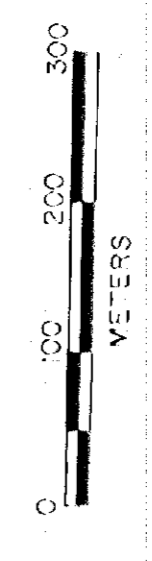
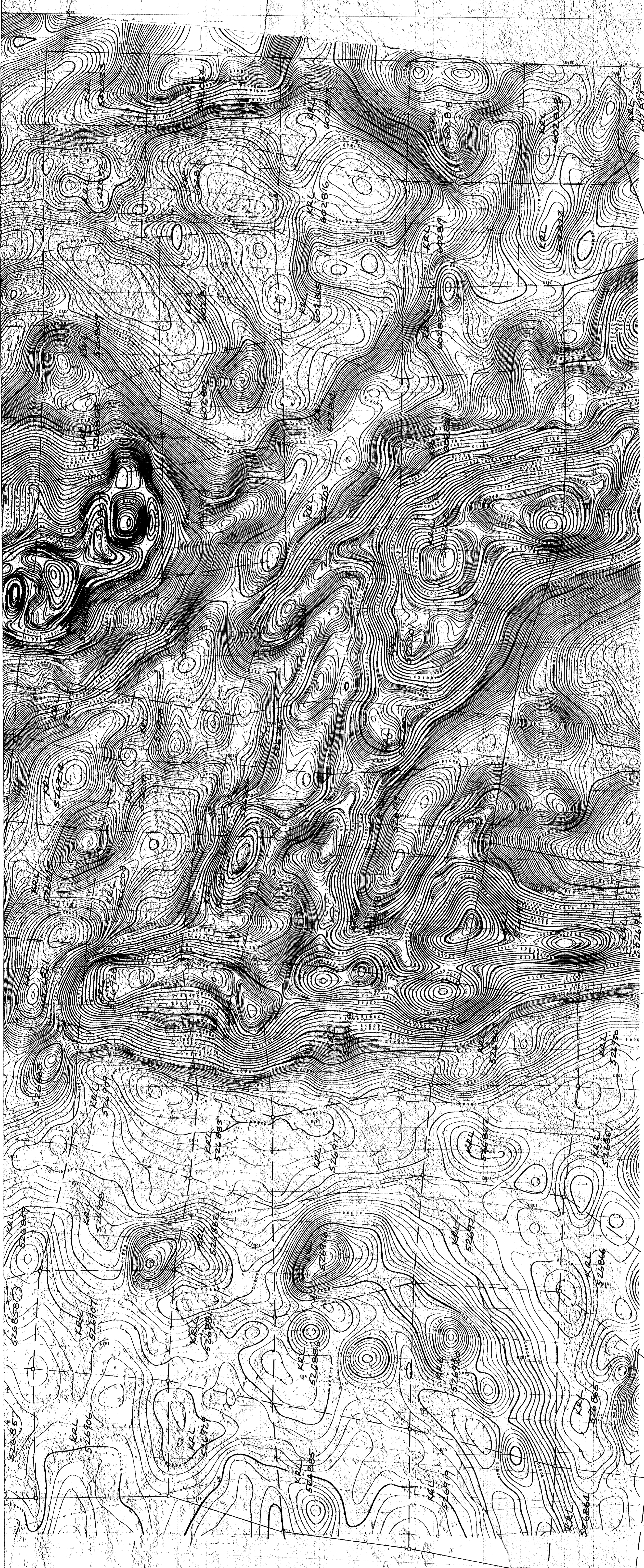
KAL
5205902

KAL
5205909

KAL
5205916

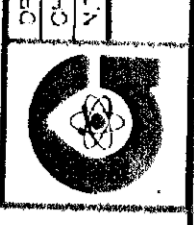
KAL
5205923

KAL
5205930

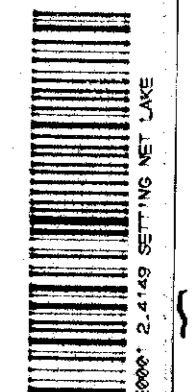


ZAHAVY PROPERTY
AERODAT MAGNETIC SURVEY
NORTH-SOUTH LINES
NORTH SHEET

DATE: MAY 1958
DRAWN BY: J.C. GAGNON
SCALE: 1:50,000



Getty Canadian Metals, Ltd.



2550