

THESE TERMS GOVERN YOUR USE OF THIS DOCUMENT

Your use of this Ontario Geological Survey document (the “Content”) is governed by the terms set out on this page (“Terms of Use”). By downloading this Content, you (the “User”) have accepted, and have agreed to be bound by, the Terms of Use.

Content: This Content is offered by the Province of Ontario’s *Ministry of Energy, Northern Development and Mines* (ENDM) as a public service, on an “as-is” basis. Recommendations and statements of opinion expressed in the Content are those of the author or authors and are not to be construed as statement of government policy. You are solely responsible for your use of the Content. You should not rely on the Content for legal advice nor as authoritative in your particular circumstances. Users should verify the accuracy and applicability of any Content before acting on it. ENDM does not guarantee, or make any warranty express or implied, that the Content is current, accurate, complete or reliable. ENDM is not responsible for any damage however caused, which results, directly or indirectly, from your use of the Content. ENDM assumes no legal liability or responsibility for the Content whatsoever.

Links to Other Web Sites: This Content may contain links, to Web sites that are not operated by ENDM. Linked Web sites may not be available in French. ENDM neither endorses nor assumes any responsibility for the safety, accuracy or availability of linked Web sites or the information contained on them. The linked Web sites, their operation and content are the responsibility of the person or entity for which they were created or maintained (the “Owner”). Both your use of a linked Web site, and your right to use or reproduce information or materials from a linked Web site, are subject to the terms of use governing that particular Web site. Any comments or inquiries regarding a linked Web site must be directed to its Owner.

Copyright: Canadian and international intellectual property laws protect the Content. Unless otherwise indicated, copyright is held by the Queen’s Printer for Ontario.

It is recommended that reference to the Content be made in the following form:

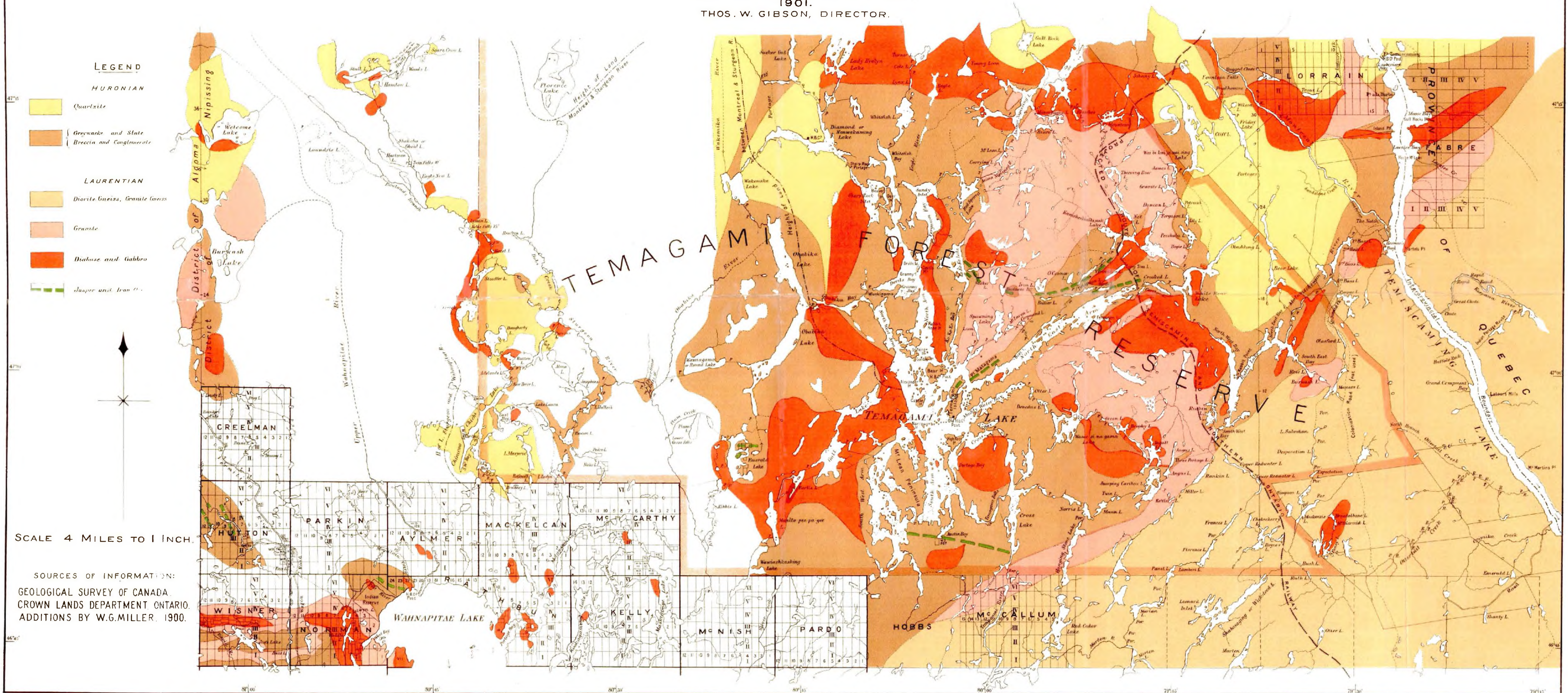
Miller, W.G. 1901. Map of part of the District of Nipissing to accompany report by W.G. Miller, on the iron ores of Nipissing, tenth report; Ontario Geological Survey, Annual Report Map ARM10A, scale 1:253 440.

Use and Reproduction of Content: The Content may be used and reproduced only in accordance with applicable intellectual property laws. *Non-commercial* use of unsubstantial excerpts of the Content is permitted provided that appropriate credit is given and Crown copyright is acknowledged. Any substantial reproduction of the Content or any *commercial* use of all or part of the Content is prohibited without the prior written permission of ENDM. Substantial reproduction includes the reproduction of any illustration or figure, such as, but not limited to graphs, charts and maps. Commercial use includes commercial distribution of the Content, the reproduction of multiple copies of the Content for any purpose whether or not commercial, use of the Content in commercial publications, and the creation of value-added products using the Content.

Contact:

FOR FURTHER INFORMATION ON	PLEASE CONTACT:	BY TELEPHONE:	BY E-MAIL:
The Reproduction of the EIP or Content	ENDM Publication Services	Local: (705) 670-5691 Toll-Free: 1-888-415-9845, ext. 5691 (inside Canada, United States)	Pubsales.ndm@ontario.ca
The Purchase of ENDM Publications	ENDM Publication Sales	Local: (705) 670-5691 Toll-Free: 1-888-415-9845, ext. 5691 (inside Canada, United States)	Pubsales.ndm@ontario.ca
Crown Copyright	Queen’s Printer	Local: (416) 326-2678 Toll-Free: 1-800-668-9938 (inside Canada, United States)	Copyright@ontario.ca

MAP OF PART OF
THE DISTRICT OF NIPISSING
 TO ACCOMPANY
REPORT BY W.G. MILLER
 ON THE
IRON ORES OF NIPISSING,
 TENTH REPORT BUREAU OF MINES,
 1901.
 THOS. W. GIBSON, DIRECTOR.



LEGEND

HURONIAN

- Quartzite
- Gneiss and Slate
Breccia and Conglomerate

LAURENTIAN

- Diorite Gneiss, Granite Gneiss
- Granite
- Diabase and Gabbro
- Jasper and Iron Ore



SCALE 4 MILES TO 1 INCH.

SOURCES OF INFORMATION:
 GEOLOGICAL SURVEY OF CANADA,
 CROWN LANDS DEPARTMENT ONTARIO,
 ADDITIONS BY W.G. MILLER, 1900.