

## MAP THESE TERMS GOVERN YOUR USE OF THIS PRODUCT

***Your use of this electronic information product (“EIP”), and the digital data files contained on it (the “Content”), is governed by the terms set out on this page (“Terms of Use”). By opening the EIP and viewing the Content, you (the “User”) have accepted, and have agreed to be bound by, the Terms of Use.***

**EIP and Content:** This EIP and Content is offered by the Province of Ontario’s *Ministry of Northern Development, Mines and Forestry* (MNDMF) as a public service, on an “as-is” basis. Recommendations and statements of opinions expressed are those of the author or authors and are not to be construed as statement of government policy. You are solely responsible for your use of the EIP and its Content. You should not rely on the Content for legal advice nor as authoritative in your particular circumstances. Users should verify the accuracy and applicability of any Content before acting on it. MNDMF does not guarantee, or make any warranty express or implied, that the Content is current, accurate, complete or reliable or that the EIP is free from viruses or other harmful components. MNDMF is not responsible for any damage however caused, which results, directly or indirectly, from your use of the EIP or the Content. MNDMF assumes no legal liability or responsibility for the EIP or the Content whatsoever.

**Links to Other Web Sites:** This EIP or the Content may contain links, to Web sites that are not operated by MNDMF. Linked Web sites may not be available in French. MNDMF neither endorses nor assumes any responsibility for the safety, accuracy or availability of linked Web sites or the information contained on them. The linked Web sites, their operation and content are the responsibility of the person or entity for which they were created or maintained (the “Owner”). Both your use of a linked Web site, and your right to use or reproduce information or materials from a linked Web site, are subject to the terms of use governing that particular Web site. Any comments or inquiries regarding a linked Web site must be directed to its Owner.

**Copyright:** Canadian and international intellectual property laws protect the EIP and the Content. Unless otherwise indicated, copyright is held by the Queen’s Printer for Ontario.

It is recommended that reference to the Content be made in the following form:

Fletcher, G.L. and Irvine, T.N. 1954. Emo area, District of Rainy River, Ontario; Ontario Department of Mines, Map 1954-02, 1:63 360.

**Use and Reproduction of Content:** The EIP and the Content may be used and reproduced only in accordance with applicable intellectual property laws. *Non-commercial* use of unsubstantial excerpts of the Content is permitted provided that appropriate credit is given and Crown copyright is acknowledged. Any substantial reproduction of the Content or any *commercial* use of all or part of the Content is prohibited without the prior written permission of MNDMF. Substantial reproduction includes the reproduction of any illustration or figure, such as, but not limited to graphs, charts and maps. Commercial use includes commercial distribution of the Content, the reproduction of multiple copies of the Content for any purpose whether or not commercial, use of the Content in commercial publications, and the creation of value-added products using the Content.

### Contact:

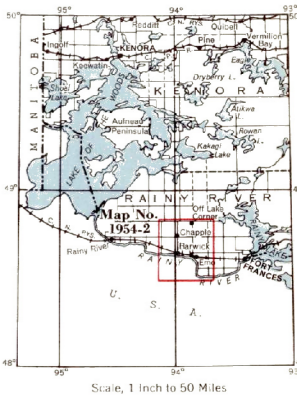
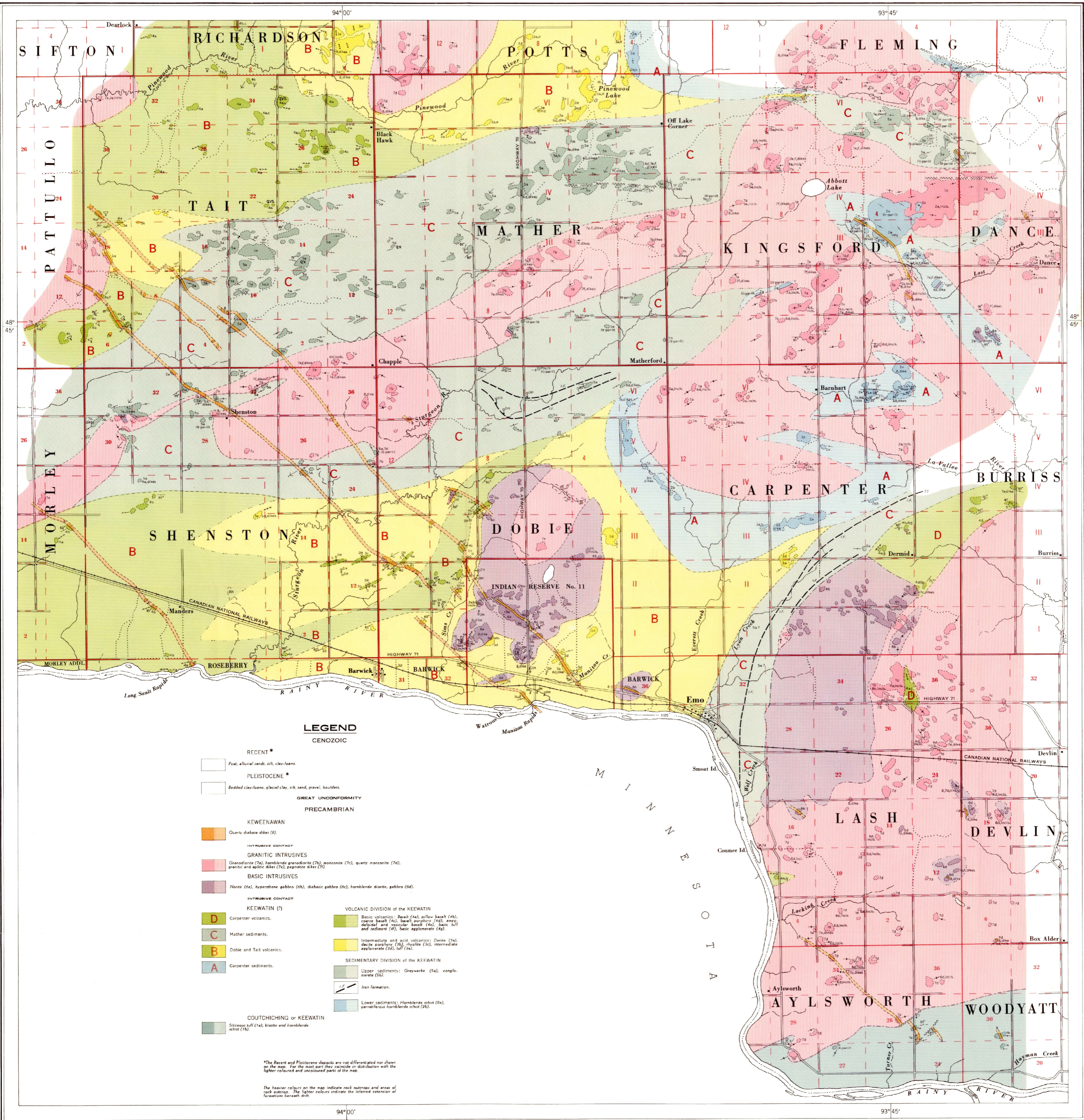
FOR FURTHER INFORMATION ON	PLEASE CONTACT:	BY TELEPHONE:	BY E-MAIL:
The Reproduction of the EIP or Content	MNDMF Publication Services	Local: (705) 670-5691 Toll Free: 1-888-415-9845, ext. 5691 (inside Canada, United States)	<a href="mailto:Pubsales.ndm@ontario.ca">Pubsales.ndm@ontario.ca</a>
The Purchase of MNDMF Publications	MNDMF Publication Sales	Local: (705) 670-5691 Toll Free: 1-888-415-9845, ext. 5691 (inside Canada, United States)	<a href="mailto:Pubsales.ndm@ontario.ca">Pubsales.ndm@ontario.ca</a>
Crown Copyright	Queen’s Printer	Local: (416) 326-2678 Toll Free: 1-800-668-9938 (inside Canada, United States)	<a href="mailto:Copyright@gov.on.ca">Copyright@gov.on.ca</a>



PROVINCE OF ONTARIO  
DEPARTMENT OF MINES

HON. PHILIP T. KELLY, Minister of Mines  
H. C. Bickaby, Deputy Minister M. E. Hurst, Provincial Geologist

Map No. 1954-2  
EMO AREA



- SYMBOLS**
- Township boundary, boundary of Indian Reserve.
  - International boundary.
  - Altitude in feet above mean sea level.
  - Muskeg and swamp.
  - Boundary of muskeg or swamp.
  - River, creek, stream, R-rapid.
  - Railway.
  - Road, with number.
  - Highway.
  - Trail, surface.
  - Glacial striae.
  - Boundary of rock outcrop.
  - Small outcrop.
  - Geological boundary, defined.
  - Geological boundary, approximate.
  - Geological boundary, assumed.
  - Geological boundary as indicated by geophysical data.
  - Strike and dip, direction of top unknown.
  - Strike and vertical dip, direction of top unknown.
  - Strike and dip of overturned bedding, both face in direction of arrow and dip in direction of loop.
  - Direction (arrow) in which inclined beds face as indicated by gradation in grain size.
  - Direction (arrow) in which vertical beds face as indicated by gradation in grain size.
  - Direction in which lava flows face, indicated by shape of the pillow.
  - Direction of plunge of fold axis, crest line or trough line.
  - Strike and dip of schistosity.
  - Strike of vertical schistosity.
  - Strike and dip of mesoschist.
  - Strike of vertical gneissosity.
  - Stratiform foliation, vertical.
  - Drag-folds. (Arrow indicates direction of plunge).
  - Fault, defined.
  - Fault, assumed.
  - Building, village.
  - Test pit.
  - Drill hole, vertical, inclined.
  - Vein.
  - Sulphide mineralization.

**LEGEND**

- CENOZOIC**
- RECENT \***  
Fret, alluvial sands, silt, clay-loams.
- PLEISTOCENE \***  
Bedded clay-loams, glacial clay, silt, sand, gravel, boulders.
- GREAT UNCONFORMITY**
- PRECAMBRIAN**
- KEWEENAW**  
Quartz diabase dikes (2).
- INTRUSIVE CONTACT**
- GRANITIC INTRUSIVES**  
Granodiorite (7a), hornblende granodiorite (7b), monzonite (7c), quartz monzonite (7d), granitic and aplite dikes (7e), pegmatite dikes (7f).
- BASIC INTRUSIVES**  
Monite (8a), hypersthene gabbro (8b), diabasic gabbro (8c), hornblende diorite, gabbro (8d).
- INTRUSIVE CONTACT**
- KEEWATIN (7)**
- D** Carpenter volcanics.  
**C** Mather sediments.  
**B** Dobie and Tait volcanics.  
**A** Carpenter sediments.
- COUCHICHING or KEEWATIN**  
Siliceous tuff (1a), braille and hornblende schist (1b).
- VOLCANIC DIVISION of the KEEWATIN**
- Basic volcanics: Basalt (4a), pillow basalt (4b), coarse basalt (4c), basalt porphyry (4d), amygdaloidal and vesicular basalt (4e), basic tuff and redstone (4f), basic agglomerate (4g).
- Intermediate and acid volcanics: Dike (5a), dacite and rhyolite (5b), rhyolite (5c), intermediate agglomerate (5d), tuff (5e).
- SEDIMENTARY DIVISION of the KEEWATIN**
- Upper sediments: Greywacke (6a), conglomerate (6b).
- Iron formation.
- Lower sediments: Hornblende schist (2a), serafertous hornblende schist (2b).

\*The Recent and Pleistocene deposits are not differentiated nor shown on the map. For the most part they coincide in distribution with the lighter-colored and uncoloured parts of the map.

The heavier colours on the map indicate rock outcrops and areas of rock outcrop. The lighter colours indicate the inferred extension of formations beneath drift.

**SOURCES OF INFORMATION**

Base map from maps of Forest Resources Inventory Branch, Ontario Department of Lands and Forests with additional information from Ontario Department of Highways.

Geological information from mining companies.

Geology by G. L. Fletcher and T. N. Irvine, 1953.

**NOTES**

The geographic names on this map conform to the recommendations of the Division of Survey and Engineering, Ontario Department of Lands and Forests.

The magnetic declination in the area was approximately 0° E. in 1953.

Map No. 1954-2  
**EMO AREA**

DISTRICT OF RAINY RIVER, ONTARIO

