

THESE TERMS GOVERN YOUR USE OF THIS PRODUCT

Your use of this electronic information product (“EIP”), and the digital data files contained on it (the “Content”), is governed by the terms set out on this page (“Terms of Use”). By opening the EIP and viewing the Content , you (the “User”) have accepted, and have agreed to be bound by, the Terms of Use.

EIP and Content: This EIP and Content is offered by the Province of Ontario’s *Ministry of Northern Development, Mines and Forestry* (MNDMF) as a public service, on an “as-is” basis. Recommendations and statements of opinions expressed are those of the author or authors and are not to be construed as statement of government policy. You are solely responsible for your use of the EIP and its Content. You should not rely on the Content for legal advice nor as authoritative in your particular circumstances. Users should verify the accuracy and applicability of any Content before acting on it. MNDMF does not guarantee, or make any warranty express or implied, that the Content is current, accurate, complete or reliable or that the EIP is free from viruses or other harmful components. MNDMF is not responsible for any damage however caused, which results, directly or indirectly, from your use of the EIP or the Content. MNDMF assumes no legal liability or responsibility for the EIP or the Content whatsoever.

Links to Other Web Sites: This EIP or the Content may contain links, to Web sites that are not operated by MNDMF. Linked Web sites may not be available in French. MNDMF neither endorses nor assumes any responsibility for the safety, accuracy or availability of linked Web sites or the information contained on them. The linked Web sites, their operation and content are the responsibility of the person or entity for which they were created or maintained (the “Owner”). Both your use of a linked Web site, and your right to use or reproduce information or materials from a linked Web site, are subject to the terms of use governing that particular Web site. Any comments or inquiries regarding a linked Web site must be directed to its Owner.

Copyright: Canadian and international intellectual property laws protect the EIP and the Content. Unless otherwise indicated, copyright is held by the Queen’s Printer for Ontario.

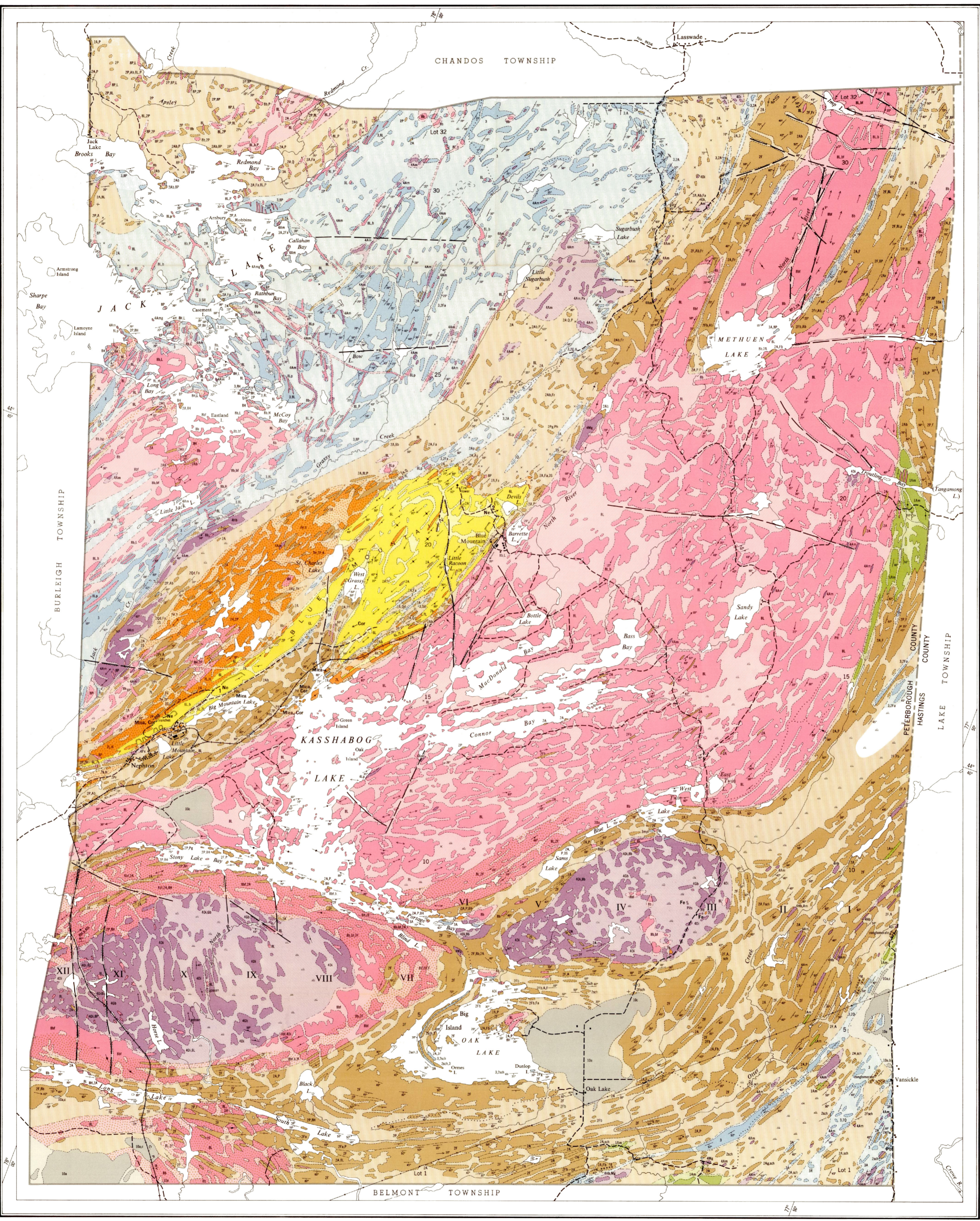
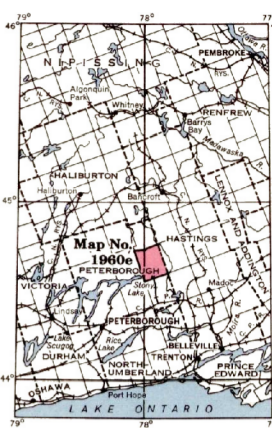
It is recommended that reference to the Content be made in the following form:

Hewitt, D.F. 1960. Methuen Township, County of Peterborough, Ontario; Ontario Department of Mines, Map 1960E, 1:31 680.

Use and Reproduction of Content: The EIP and the Content may be used and reproduced only in accordance with applicable intellectual property laws. *Non-commercial* use of unsubstantial excerpts of the Content is permitted provided that appropriate credit is given and Crown copyright is acknowledged. Any substantial reproduction of the Content or any *commercial* use of all or part of the Content is prohibited without the prior written permission of MNDMF. Substantial reproduction includes the reproduction of any illustration or figure, such as, but not limited to graphs, charts and maps. Commercial use includes commercial distribution of the Content, the reproduction of multiple copies of the Content for any purpose whether or not commercial, use of the Content in commercial publications, and the creation of value-added products using the Content.

Contact:

FOR FURTHER INFORMATION ON	PLEASE CONTACT:	BY TELEPHONE:	BY E-MAIL:
The Reproduction of the EIP or Content	MNDMF Publication Services	Local: (705) 670-5691 Toll Free: 1-888-415-9845, ext. 5691 (inside Canada, United States)	Pubsales.ndm@ontario.ca
The Purchase of MNDMF Publications	MNDMF Publication Sales	Local: (705) 670-5691 Toll Free: 1-888-415-9845, ext. 5691 (inside Canada, United States)	Pubsales.ndm@ontario.ca
Crown Copyright	Queen’s Printer	Local: (416) 326-2678 Toll Free: 1-800-668-9938 (inside Canada, United States)	Copyright@gov.on.ca



- SYMBOLS**
- Mushing or swamp, with boundary.
 - Railway.
 - Electric power transmission line.
 - Minor road.
 - Major road, with provincial secondary road running.
 - Fencible, post-and-rail road.
 - County boundary, approximate location only.
 - Township boundary, approximate location only.
 - Glacial striae.
 - Small rock outcrop.
 - Boundary of rock outcrop.
 - Geological boundary, defined.
 - Geological boundary, approximate.
 - Geological boundary, assumed.
 - Horizontal bedding.
 - Strike and dip of bedding; direction of top unknown.
 - Strike and dip of bedding; trend and plunge of formation.
 - Strike and vertical dip of bedding; direction of top unknown.
 - Folded bedding, with dip.
 - Direction in which flow flows face as indicated by slope of pillow; combined with strike and dip.
 - Synclinal axis.
 - Anticlinal axis.
 - Direction of plunge of fold axis, crest line or trough line.
 - Strike and dip of schistosity.
 - Strike of vertical schistosity.
 - Strike and dip of gneissosity.
 - Strike of vertical gneissosity.
 - Horizontal gneissosity.
 - Strike and dip of gneissosity; trend of horizontal lineation.
 - Strike and dip of gneissosity; trend and plunge of lineation.
 - Strike of foliation, dip unknown.
 - Lineation, plunge known, plunge unknown.
 - Jointing, vertical.
 - Jointing, horizontal.
 - Drag folds. Arrow indicates direction of plunge.
 - Lineament or fault.
 - Building.
 - Test pit.
 - Quarry.
 - Trench.
 - Location of mining property. Refer to list of properties for details.
 - Mineral occurrence. Refer to mineral occurrence reference.

- LEGEND**
- CENOZOIC**
- RECENT AND PLEISTOCENE***
- Sand, gravel, clay, silt, etc.
- GREAT UNCONFORMITY**
- PALEOZOIC**
- ORDOVICIAN**
- 10a Limestone, dolomitic limestone, and argillaceous limestone and shale
10c Best grit and arkose.
- GREAT UNCONFORMITY**
- PRECAMBRIAN**
- PLUTONIC ROCKS**
- GRANITIC ROCKS**
- 8L Leucogranite, leucogranite gneiss, pegmatite, microgranite (includes rocks of granodiorite and quartz monzonite composition)
8B Biotite granites: biotite granitic gneiss, biotite granitic schist, biotite granitic amphibolite, hornblende gneiss
8H Hornblende gneiss, hornblende gneiss
8P Hybrid granitic gneiss, migmatite, interbedded hybrid granitic gneiss and amphibolite, granitoid gneiss, Granite pegmatite.
- INTRUSIVE CONTACT**
- SYENITIC ROCKS**
- 7L Leucosyenite, leucosyenite gneiss
7b Biotite syenite, biotite syenite gneiss
7h Hornblende syenite, hornblende syenite gneiss
7P Hybrid syenite gneiss, (order bands) hybrid syenite gneiss (amphibolite), syenitized gneiss, Syenite pegmatite.
- INTRUSIVE CONTACT**
- NEPHELINE SYENITE**
- 6L Leucocratic nepheline syenite
6b Biotite nepheline syenite.
- INTRUSIVE CONTACT**
- BASIC INTRUSIVES****
- 4Am Ortho-amphibole: 4Am, perthite-amphibolite
4D1 Diorite, quartz diorite; 4D1b, hornblende diorite
4G Gabro
4H Hornblende gneiss
4L Lamprophyre
4M Metagabbro, meladiorite
4P Pyroxene amphibolite.
- INTRUSIVE CONTACT**
- METASEDIMENTARY AND VOLCANIC ROCKS**
- CALCAREOUS SEDIMENTS**
- 3 Limestone, dolomite, marble; silty, siliceous marls; silty, micaceous marls; micaceous marls; micaceous and amphibolite, paragneiss or schist
3A Brecciated marble, marble breccia
3B Sandstone limestone or marble
3C Lime siliceous rock; SS, siltstone.
- NON-CALCAREOUS SEDIMENTS****
- 2A Para-amphibolite, amphibolite schist, hornblende-plagioclase gneiss and schist; 2A, biotite amphibolite; 2A, granitic amphibolite; 2A, rusty amphibolite
2F Arkose, quartzite, felspathic gneiss, includes some quartzite (see Lake Ontario)
2G Gneiss, quartzite, felspathic schist; 2G, biotite felspathic gneiss or schist; 2G, rusty felspathic gneiss or schist; 2G, gabbro amphibolite
2P Paragneiss, psammopelitic gneiss and schist, biotite schist; 2P, garnet paragneiss; 2P, rusty paragneiss or schist.
2S Quartzite, 2S, diopside quartzite
20 Schist, mica schist, amphibolite schist, some greenstone schist
- VOLCANIC ROCKS**
- 1Am Amphibolite, amphibolite schist, gneiss, pillow lava
1Ap Agglomerate.
- Stippled areas of granitic and syenitic rocks include many sedimentary bands and much relict sedimentary material.**
- *These deposits are represented by the lighter colored and uncoloured parts on the map.
**May be of more than one age.
***Possibly including some volcanic sediments and volcanic amphibolites.
- The heavier colours on the map indicate rock outcrops, and areas of erosion. The lighter colours indicate the inferred extension of formations beneath drift.
- Magnetic declination is about 11° West but varies locally.
- SOURCES OF INFORMATION**
- Base map derived from maps of the Forest Resources Inventory, Ontario Department of Lands and Forests, with additional information by D. F. Hewitt.
- Geology by D. F. Hewitt and assistants, 1968 and 1967.
- MINERAL OCCURRENCES**
- REFERENCE**
- Cor Corundum
Fe Magnetite, limonite
Mica Mica
Ne Nepheline
Pb Lead
- LIST OF PROPERTIES**
- 1 American Nepheline Ltd.
2 International Minerals and Chemical Corporation (Canada) Ltd.

Map No. 1960e
METHUEN TOWNSHIP
 COUNTY OF PETERBOROUGH, ONTARIO

