

THESE TERMS GOVERN YOUR USE OF THIS PRODUCT

Your use of this electronic information product (“EIP”), and the digital data files contained on it (the “Content”), is governed by the terms set out on this page (“Terms of Use”). By opening the EIP and viewing the Content , you (the “User”) have accepted, and have agreed to be bound by, the Terms of Use.

EIP and Content: This EIP and Content is offered by the Province of Ontario’s *Ministry of Northern Development, Mines and Forestry* (MNDMF) as a public service, on an “as-is” basis. Recommendations and statements of opinions expressed are those of the author or authors and are not to be construed as statement of government policy. You are solely responsible for your use of the EIP and its Content. You should not rely on the Content for legal advice nor as authoritative in your particular circumstances. Users should verify the accuracy and applicability of any Content before acting on it. MNDMF does not guarantee, or make any warranty express or implied, that the Content is current, accurate, complete or reliable or that the EIP is free from viruses or other harmful components. MNDMF is not responsible for any damage however caused, which results, directly or indirectly, from your use of the EIP or the Content. MNDMF assumes no legal liability or responsibility for the EIP or the Content whatsoever.

Links to Other Web Sites: This EIP or the Content may contain links, to Web sites that are not operated by MNDMF. Linked Web sites may not be available in French. MNDMF neither endorses nor assumes any responsibility for the safety, accuracy or availability of linked Web sites or the information contained on them. The linked Web sites, their operation and content are the responsibility of the person or entity for which they were created or maintained (the “Owner”). Both your use of a linked Web site, and your right to use or reproduce information or materials from a linked Web site, are subject to the terms of use governing that particular Web site. Any comments or inquiries regarding a linked Web site must be directed to its Owner.

Copyright: Canadian and international intellectual property laws protect the EIP and the Content. Unless otherwise indicated, copyright is held by the Queen’s Printer for Ontario.

It is recommended that reference to the Content be made in the following form:

Hewitt, D.F. 1960. Bigwood area, districts of Sudbury and Parry Sound, Ontario; Ontario Department of Mines, Map 1960F, 1:31 680.

Use and Reproduction of Content: The EIP and the Content may be used and reproduced only in accordance with applicable intellectual property laws. *Non-commercial* use of unsubstantial excerpts of the Content is permitted provided that appropriate credit is given and Crown copyright is acknowledged. Any substantial reproduction of the Content or any *commercial* use of all or part of the Content is prohibited without the prior written permission of MNDMF. Substantial reproduction includes the reproduction of any illustration or figure, such as, but not limited to graphs, charts and maps. Commercial use includes commercial distribution of the Content, the reproduction of multiple copies of the Content for any purpose whether or not commercial, use of the Content in commercial publications, and the creation of value-added products using the Content.

Contact:

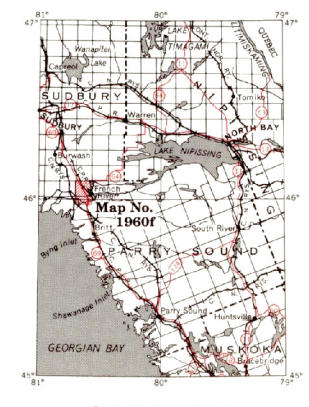
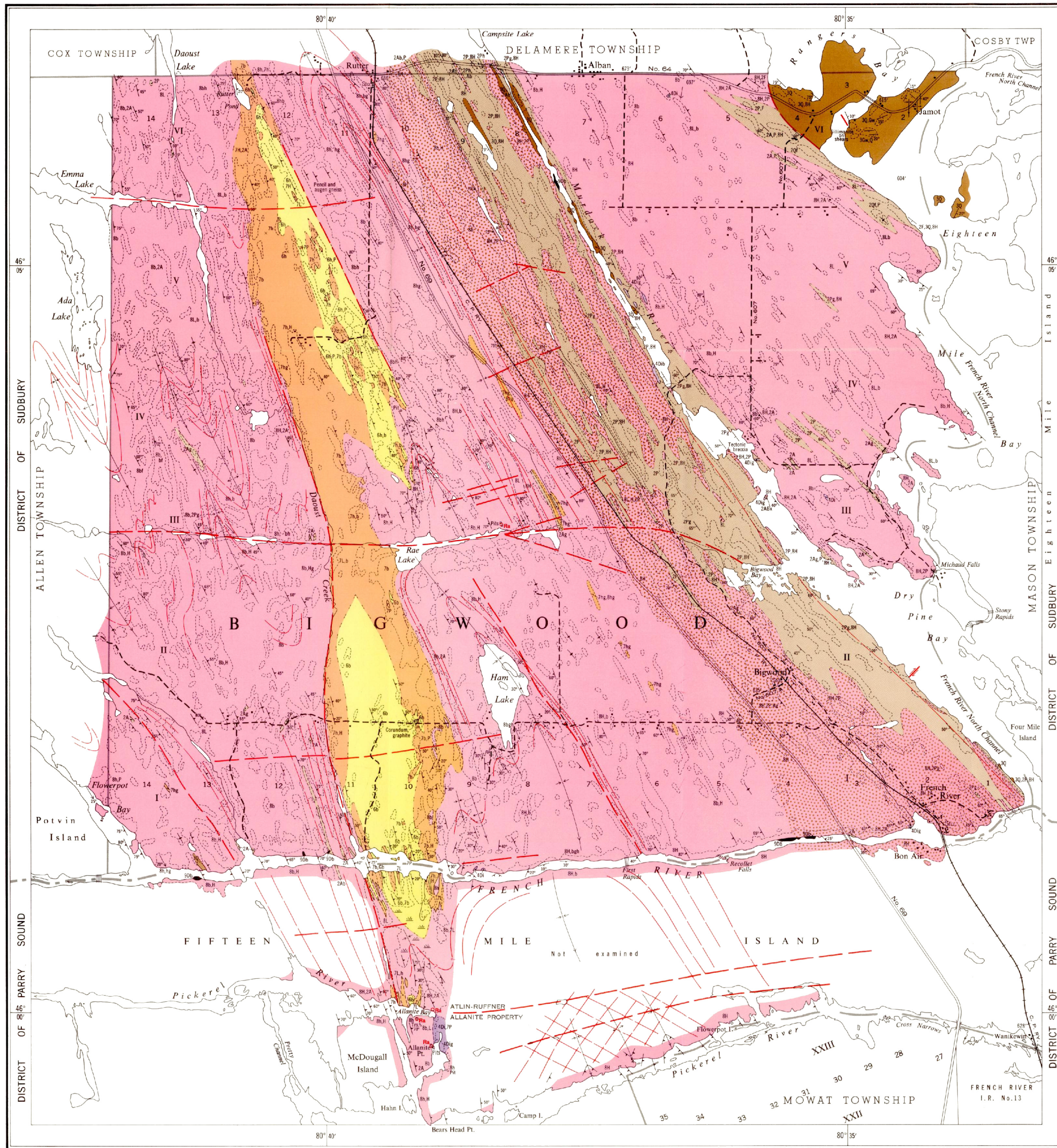
FOR FURTHER INFORMATION ON	PLEASE CONTACT:	BY TELEPHONE:	BY E-MAIL:
The Reproduction of the EIP or Content	MNDMF Publication Services	Local: (705) 670-5691 Toll Free: 1-888-415-9845, ext. 5691 (inside Canada, United States)	Pubsales.ndm@ontario.ca
The Purchase of MNDMF Publications	MNDMF Publication Sales	Local: (705) 670-5691 Toll Free: 1-888-415-9845, ext. 5691 (inside Canada, United States)	Pubsales.ndm@ontario.ca
Crown Copyright	Queen’s Printer	Local: (416) 326-2678 Toll Free: 1-800-668-9938 (inside Canada, United States)	Copyright@gov.on.ca



ONTARIO
DEPARTMENT OF MINES

HON. JAMES A. MALONEY, Minister of Mines
H. C. Rickaby, Deputy Minister M. E. Hurst, Provincial Geologist

Map No. 1960f
BIGWOOD AREA



LEGEND

CENOZOIC

RECENT AND PLEISTOCENE*
Sand, gravel and clay.

GREAT UNCONFORMITY

PRECAMBRIAN

PLUTONIC ROCKS

DIABASE

9Db Diabase.
9Gb Gabro.

INTRUSIVE CONTACT

GRANITIC ROCKS

8L Leucogranite, leucogranite gneiss;
8b Biotite granite, biotite granite gneiss; 8h Hornblende biotite granite; 8hf Biotite granite, felsic paragneiss; 8hg Garnet hornblende biotite granite; 8g Garnet biotite granite.
8h Hornblende granite, hornblende granite gneiss; 8hg Garnet hornblende granite; 8hg Garnet hornblende granite; 8hg Biotite garnet hornblende granite.
8H Hybrid granite gneiss, migmatite, interbedded granite gneiss and sediments, granitized gneiss.
8P Granite pegmatite.

INTRUSIVE CONTACT OR GRANITIZATION

SYENITIC ROCKS

7L Leucosyenite, leucosyenite gneiss.
7b Biotite syenite, biotite syenite gneiss.
7h Hornblende syenite, hornblende syenite gneiss; 7hg Garnet hornblende syenite gneiss.
7H Hybrid syenite gneiss, syenitized gneiss.
7P Syenite pegmatite.

NEPHELINE SYENITE

6b Biotite nepheline syenite gneiss.
6h Hornblende nepheline syenite gneiss.
6P Nepheline syenite pegmatite.

INTRUSIVE CONTACT

DIORITE

4Di Diorite; 4Dg, garnetiferous diorite; 4Dib, biotite diorite.

INTRUSIVE CONTACT

SEDIMENTARY ROCKS**

QUARTZITE AND SILICEOUS GREYWACKE***

3Q Quartzite
3Gw Siliceous greywacke.

PARAGNEISS AND PARA-AMPHIBOLITE

2A Para-amphibolite, hornblende plagioclase gneiss and schist; 2Ab, biotite amphibolite; 2Ag, garnet amphibolite; 2Asx, tectonic breccia.
2F Arkose.
2Qf Quartzite-felspathic gneiss.
2P Paragneiss, biotite-quartz-plagioclase gneiss, biotite paragneiss; 2Pg, garnet paragneiss; 2Ph, hornblende paragneiss.

Stippled areas of granitic rocks include many small sedimentary bands and relict sedimentary material.

*These deposits are not differentiated by colour on the map.

**With the exception of the quartzite and greywacke formation near Jamot in the northeast corner of the township, the sedimentary rocks have been highly deformed, metamorphosed and granitized to varied degrees during the Grenville orogeny.

***The white quartzite at Jamot is lithologically similar to the "Lorain" quartzite at Whitefish Falls, and is correlated by T. T. Quirk (Geological Survey of Canada Map 238A, Delamere sheet) as Lorain quartzite. The quartzite along the Murook River is correlated by T. T. Quirk as Serpent quartzite.

Magnetic declination is about 8° West but varies locally.

SOURCES OF INFORMATION

Base map derived from maps and air photographs of the Forest Resources Inventory (first edition), Ontario Department of Lands and Forests, with additional information by D. F. Hewitt.

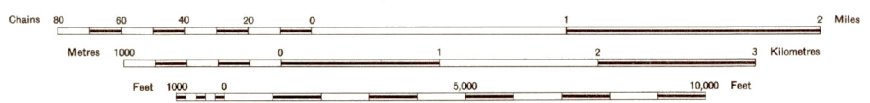
Geology by D. F. Hewitt and assistants, August-September, 1957.

Map No. 1960f

BIGWOOD AREA

DISTRICTS OF SUDBURY AND PARRY SOUND, ONTARIO

Scale 1:31,680 or 1 Inch to 1/2 Mile



- SYMBOLS**
- 697 Altitude in feet above mean sea level.
 - Muskeg or swamp.
 - River, creek, stream.
 - Bridge.
 - Railway.
 - No. 69 Provincial highway, with number.
 - No. 607 Motor road, with provincial secondary road number.
 - Trail.
 - District boundary, approximate location only.
 - Township boundary, approximate location only.
 - Glacial striae.
 - Small rock outcrop.
 - Boundary of rock outcrop.
 - Geological boundary, defined.
 - Geological boundary, approximate.
 - Geological boundary, assumed.
 - Strike and dip of bedding; direction of top unknown.
 - Strike and vertical dip of bedding; direction of top unknown.
 - Synclinal axis.
 - Anticlinal axis.
 - Direction of plunge of fold axis, crest line or trough line.
 - Strike and dip of gneissosity.
 - Strike and dip of gneissosity; trend and plunge of lineation.
 - Strike of vertical gneissosity.
 - Folded gneissosity, with dip.
 - Drap-folded gneissosity. (Arrow indicates direction of plunge).
 - Lineation, plunge unknown.
 - Strike of foliation or bedding.
 - Strike and dip of foliation or bedding.
 - Fault, indicated or assumed.
 - Fault defined. (Arrows indicate horizontal movement).
 - Building.
 - Test pit.
 - Trench.
 - Radioactive and rare element mineral occurrence.