

## THESE TERMS GOVERN YOUR USE OF THIS DOCUMENT

**Your use of this Ontario Geological Survey document (the “Content”) is governed by the terms set out on this page (“Terms of Use”). By downloading this Content, you (the “User”) have accepted, and have agreed to be bound by, the Terms of Use.**

**Content:** This Content is offered by the Province of Ontario’s *Ministry of Northern Development and Mines* (MNDM) as a public service, on an “as-is” basis. Recommendations and statements of opinion expressed in the Content are those of the author or authors and are not to be construed as statement of government policy. You are solely responsible for your use of the Content. You should not rely on the Content for legal advice nor as authoritative in your particular circumstances. Users should verify the accuracy and applicability of any Content before acting on it. MNDM does not guarantee, or make any warranty express or implied, that the Content is current, accurate, complete or reliable. MNDM is not responsible for any damage however caused, which results, directly or indirectly, from your use of the Content. MNDM assumes no legal liability or responsibility for the Content whatsoever.

**Links to Other Web Sites:** This Content may contain links, to Web sites that are not operated by MNDM. Linked Web sites may not be available in French. MNDM neither endorses nor assumes any responsibility for the safety, accuracy or availability of linked Web sites or the information contained on them. The linked Web sites, their operation and content are the responsibility of the person or entity for which they were created or maintained (the “Owner”). Both your use of a linked Web site, and your right to use or reproduce information or materials from a linked Web site, are subject to the terms of use governing that particular Web site. Any comments or inquiries regarding a linked Web site must be directed to its Owner.

**Copyright:** Canadian and international intellectual property laws protect the Content. Unless otherwise indicated, copyright is held by the Queen’s Printer for Ontario.

It is recommended that reference to the Content be made in the following form: <Author’s last name>, <Initials> <year of publication>. <Content title>; Ontario Geological Survey, <Content publication series and number>, <total number of pages>p.

**Use and Reproduction of Content:** The Content may be used and reproduced only in accordance with applicable intellectual property laws. *Non-commercial* use of unsubstantial excerpts of the Content is permitted provided that appropriate credit is given and Crown copyright is acknowledged. Any substantial reproduction of the Content or any *commercial* use of all or part of the Content is prohibited without the prior written permission of MNDM. Substantial reproduction includes the reproduction of any illustration or figure, such as, but not limited to graphs, charts and maps. Commercial use includes commercial distribution of the Content, the reproduction of multiple copies of the Content for any purpose whether or not commercial, use of the Content in commercial publications, and the creation of value-added products using the Content.

### Contact:

FOR FURTHER INFORMATION ON	PLEASE CONTACT:	BY TELEPHONE:	BY E-MAIL:
The Reproduction of Content	MNDM Publication Services	Local: (705) 670-5691 Toll Free: 1-888-415-9845, ext. 5691 (inside Canada, United States)	<a href="mailto:Pubsales@ndm.gov.on.ca">Pubsales@ndm.gov.on.ca</a>
The Purchase of MNDM Publications	MNDM Publication Sales	Local: (705) 670-5691 Toll Free: 1-888-415-9845, ext. 5691 (inside Canada, United States)	<a href="mailto:Pubsales@ndm.gov.on.ca">Pubsales@ndm.gov.on.ca</a>
Crown Copyright	Queen’s Printer	Local: (416) 326-2678 Toll Free: 1-800-668-9938 (inside Canada, United States)	<a href="mailto:Copyright@gov.on.ca">Copyright@gov.on.ca</a>

**LES CONDITIONS CI-DESSOUS RÉGISSENT L'UTILISATION DU PRÉSENT DOCUMENT.**

***Votre utilisation de ce document de la Commission géologique de l'Ontario (le « contenu ») est régie par les conditions décrites sur cette page (« conditions d'utilisation »). En téléchargeant ce contenu, vous (l'« utilisateur ») signifiez que vous avez accepté d'être lié par les présentes conditions d'utilisation.***

**Contenu :** Ce contenu est offert en l'état comme service public par le *ministère du Développement du Nord et des Mines* (MDNM) de la province de l'Ontario. Les recommandations et les opinions exprimées dans le contenu sont celles de l'auteur ou des auteurs et ne doivent pas être interprétées comme des énoncés officiels de politique gouvernementale. Vous êtes entièrement responsable de l'utilisation que vous en faites. Le contenu ne constitue pas une source fiable de conseils juridiques et ne peut en aucun cas faire autorité dans votre situation particulière. Les utilisateurs sont tenus de vérifier l'exactitude et l'applicabilité de tout contenu avant de l'utiliser. Le MDNM n'offre aucune garantie expresse ou implicite relativement à la mise à jour, à l'exactitude, à l'intégralité ou à la fiabilité du contenu. Le MDNM ne peut être tenu responsable de tout dommage, quelle qu'en soit la cause, résultant directement ou indirectement de l'utilisation du contenu. Le MDNM n'assume aucune responsabilité légale de quelque nature que ce soit en ce qui a trait au contenu.

**Liens vers d'autres sites Web :** Ce contenu peut comporter des liens vers des sites Web qui ne sont pas exploités par le MDNM. Certains de ces sites pourraient ne pas être offerts en français. Le MDNM se dégage de toute responsabilité quant à la sûreté, à l'exactitude ou à la disponibilité des sites Web ainsi reliés ou à l'information qu'ils contiennent. La responsabilité des sites Web ainsi reliés, de leur exploitation et de leur contenu incombe à la personne ou à l'entité pour lesquelles ils ont été créés ou sont entretenus (le « propriétaire »). Votre utilisation de ces sites Web ainsi que votre droit d'utiliser ou de reproduire leur contenu sont assujettis aux conditions d'utilisation propres à chacun de ces sites. Tout commentaire ou toute question concernant l'un de ces sites doivent être adressés au propriétaire du site.

**Droits d'auteur :** Le contenu est protégé par les lois canadiennes et internationales sur la propriété intellectuelle. Sauf indication contraire, les droits d'auteurs appartiennent à l'Imprimeur de la Reine pour l'Ontario.

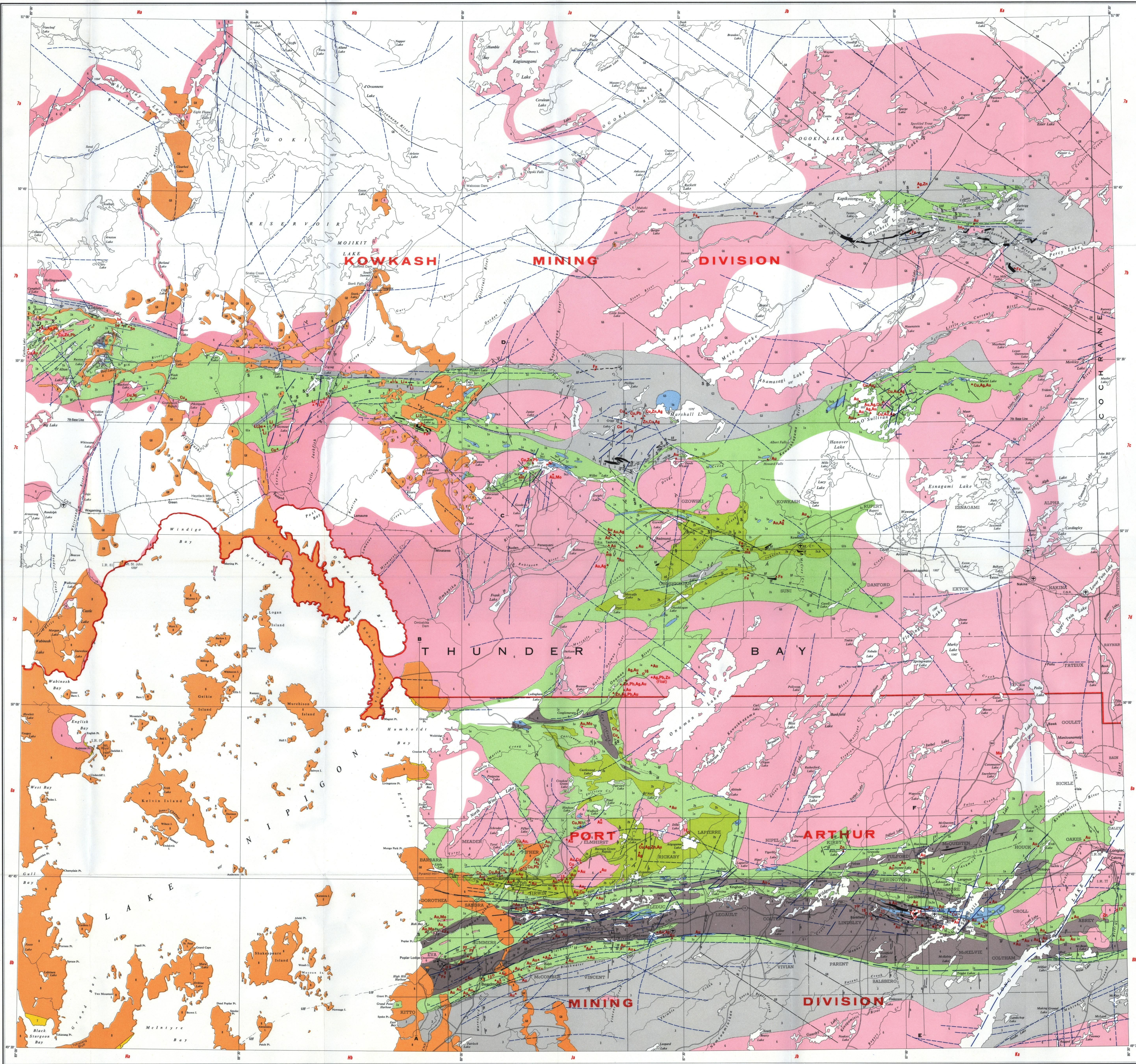
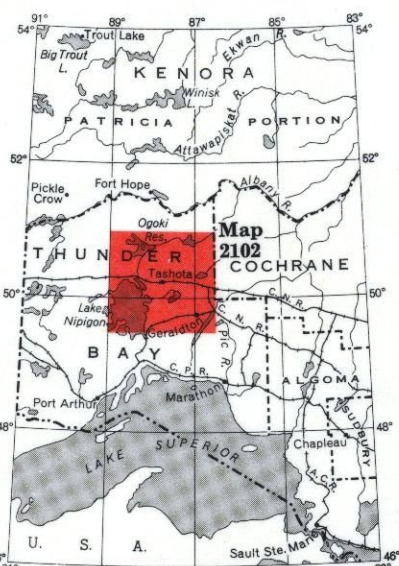
Nous recommandons de faire paraître ainsi toute référence au contenu : nom de famille de l'auteur, initiales, année de publication, titre du document, Commission géologique de l'Ontario, série et numéro de publication, nombre de pages.

**Utilisation et reproduction du contenu :** Le contenu ne peut être utilisé et reproduit qu'en conformité avec les lois sur la propriété intellectuelle applicables. L'utilisation de courts extraits du contenu à des fins *non commerciales* est autorisée, à condition de faire une mention de source appropriée reconnaissant les droits d'auteurs de la Couronne. Toute reproduction importante du contenu ou toute utilisation, en tout ou en partie, du contenu à des fins *commerciales* est interdite sans l'autorisation écrite préalable du MDNM. Une reproduction jugée importante comprend la reproduction de toute illustration ou figure comme les graphiques, les diagrammes, les cartes, etc. L'utilisation commerciale comprend la distribution du contenu à des fins commerciales, la reproduction de copies multiples du contenu à des fins commerciales ou non, l'utilisation du contenu dans des publications commerciales et la création de produits à valeur ajoutée à l'aide du contenu.

**Renseignements :**

<b>POUR PLUS DE RENSEIGNEMENTS SUR</b>	<b>VEUILLEZ VOUS ADRESSER À :</b>	<b>PAR TÉLÉPHONE :</b>	<b>PAR COURRIEL :</b>
<b>la reproduction du contenu</b>	Services de publication du MDNM	Local : (705) 670-5691 Numéro sans frais : 1 888 415-9845, poste 5691 (au Canada et aux États-Unis)	<a href="mailto:Pubsales@ndm.gov.on.ca">Pubsales@ndm.gov.on.ca</a>
<b>l'achat des publications du MDNM</b>	Vente de publications du MDNM	Local : (705) 670-5691 Numéro sans frais : 1 888 415-9845, poste 5691 (au Canada et aux États-Unis)	<a href="mailto:Pubsales@ndm.gov.on.ca">Pubsales@ndm.gov.on.ca</a>
<b>les droits d'auteurs de la Couronne</b>	Imprimeur de la Reine	Local : 416 326-2678 Numéro sans frais : 1 800 668-9938 (au Canada et aux États-Unis)	<a href="mailto:Copyright@gov.on.ca">Copyright@gov.on.ca</a>





- #### PRODUCING MINES
- |   |              |
|---|--------------|
| 1 Consolidated Moshier Mines Ltd. (2A B5)   | ..... Au, Ag |
| 2 MacLeod-Cockshutt Gold Mines Ltd. (2A B5) | ..... Au, Ag |
- #### PAST PRODUCING MINES
- |  |              |
|--|--------------|
| 3 Bankfield Consolidated Mines Ltd. (2A B5)  | ..... Au, Ag |
| 4 Breyer Mines Ltd. (2A B5)                  | ..... Au     |
| 5 Galt Mines Ltd. (2A B5)                    | ..... Au, Ag |
| 6 Hard Rock Gold Mines Ltd. (2A B5)          | ..... Au, Ag |
| 7 Salsicco Mines (2020 L1E)                  | ..... Au, Ag |
| 8 Letcher Gold Mines Ltd. (2A B5)            | ..... Au, Ag |
| 9 Little Long Lac Gold Mines Ltd. (2A B5)    | ..... Au, Ag |
| 10 Magnet Consolidated Mines Ltd. (2A B5)    | ..... Au, Ag |
| 11 Malheur Strurgeon Gold Mines Ltd. (2A B5) | ..... Au, Ag |
| 12 Northern Empire Mines Co. Ltd. (2A B5)    | ..... Au, Ag |
| 13 Northern River Mines Ltd. (2A B5)         | ..... Au, Ag |
| 14 Tashota-Nipigon Mines Ltd. (2A B5)        | ..... Au, Cu |
| 15 Thebes Gold Mines Ltd. (2A B5)            | ..... Au, Ag |
| 16 Tomhill Mines Ltd. (2A B5)                | ..... Au, Ag |
| 17 Tumbill Mines Ltd. (2A B5)                | ..... Au, Ag |

#### THE MAP INDEX

The red letters and numbers in the borders provide a location reference system based on that of Map 2026, Ontario Mineral Map, 1965.

#### MINERAL PRODUCTION AND RESOURCES

The map area contains deposits of asbestos, beryl, copper, gold, gravel, iron, lead, lithium, mart, molybdenum, nickel, pyrite, silver, tin and zinc.

Gold, together with the by-product silver, is being produced at Geraldton by Consolidated Moshier Mines Limited and MacLeod-Cockshutt Gold Mines Limited.

A total of 10 mines have produced precious metals since 1957; the value of their production to the end of 1964, amounted to approximately \$11,549,000.

The area has significance as a potential source of beneficiating iron ore. Large iron deposits have been discovered at Birchcliffe and Two Mile lakes north of Hainline in Sunnyside township south of Kowkash; west of Kenogamis Lake at Geraldton; at North Laminium Lake northwest of Audens; northeast of Summit Lake north of Silver Lake; near Elm and Pine townships near Borden. Copper, as well as gold and silver, was produced at the property of Tashota-Nipigon Mines Limited near Cochrane from 1951 to 1954, the mine yielded 360,039 pounds of copper, associated with one or more of lead, zinc, and precious metals. It has been found at many localities throughout the area. It also is found associated with nickel in Elmest and Piller townships.

Pyrite deposits, containing one or more of beryl, molybdenum, and apatite, have been found throughout the area, mainly in the northern portion. Malachite, in vein quartz, occurs in Dorotha township near Borden. Cassiterite, the ore mineral of tin, is found in granitic dikes at Linxistar Lake northwest of Wilsbig Bay, Lake Nipigon.

A number of deposits containing zinc and lead with precious metals occur northwest of Cochrane Lake.

#### HOW TO OBTAIN ADDITIONAL INFORMATION

Published geological maps covering this sheet are indicated on Index Map 2026, 2028 and 2029, Ontario Department of Mines, Toronto, and on Index Sheets 42 and 52, Geological Survey of Canada, Department of Mines and Technical Surveys, Ottawa.

Four uncoloured preliminary maps covering this sheet may be obtained from the Publications Office, Ontario Department of Mines, Toronto. These are at the scale of one inch equals two miles and are named as follows: P241 Geraldton sheet, P257 Lake Nipigon sheet, P267 Mount Lake sheet, P274 Oquist Lake sheet.

Published geological reports covering this sheet are listed in Bulletin No. 26, Ontario Department of Mines, and in the Index of Publications, Geological Survey of Canada, 1965.

Topographic maps of the area may be obtained from the Ontario Department of Lands and Forests or the Topographic Section, Department of Mines and Technical Surveys, Ottawa.

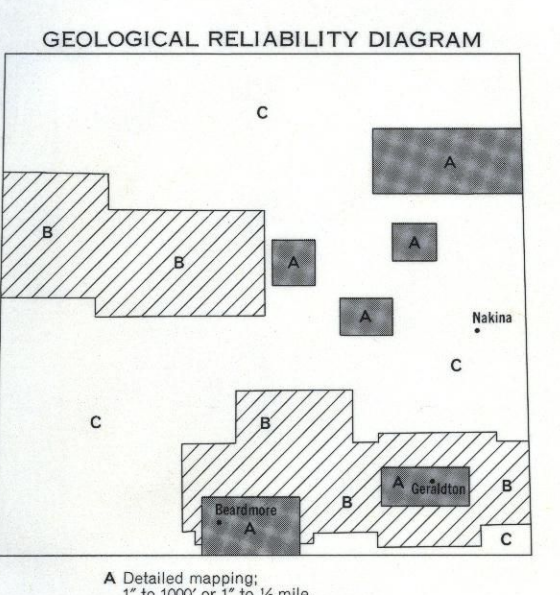
Air photographs may be obtained from the Silviculture Section, Ontario Department of Lands and Forests, Downsview, Ontario or from the National Air Photographic Library, Department of Mines and Technical Surveys, Ottawa.

Aeromagnetic maps covering this sheet may be obtained from the Ontario Department of Mines or the Geological Survey of Canada.

The name and ownership of many mineral occurrences shown on this sheet is given on Map 2026, Ontario Mineral Map 1965. Information on mines and mineral occurrences may be obtained at the office of the local Resident Geologist (Port Arthur).

Mining claim maps and general information for prospectors may be obtained at the office of the local Mining Recorder (Port Arthur, Stouffville, or at the Ontario Department of Mines, Toronto).

Up to date information on current developments of the minerals industry may be obtained from the annual review of the Ontario Department of Mines, published in the early months of each year.



- #### LEGEND
- CENOZOIC**
- PLEISTOCENE AND RECENT**  
Sands, gravel, clay  
.....
- UNCONFORMITY**
- PRECAMBRIAN**
- PROTEROZOIC**
- KEWENAWAN**  
INTRUSIVE IGNEOUS ROCKS
- |   |   |
|---|---|
| 1 | Diabase, porphyritic diabase <sup>1</sup> |
| 2 | INTRUSIVE CONTACT                         |
| 3 | .....                                     |
| 7 | Completarite, sandstone, shale, dolomite  |
| 8 | UNCONFORMITY                              |
- ARCHAIC**
- ACID IGNEOUS AND METAMORPHIC ROCKS\***
- |    |  |
|----|--|
| 4  | Granite (gross), porphyritic granite, orthogneiss, quartz diorite, syenite, diorite, amphibolite, amphibole, hornblende, quartz and biotite porphyries, amphibolite, quartzite     |
| 5  | INTRUSIVE CONTACT  |
| 6  | BASIC AND ULTRABASIC IGNEOUS ROCKS   |
| 9  | Quartz diorite, diorite, diorite porphyry, diabase, gabbro, melagabbro, hornblende, pyroxenite, peridotite, hornblende, amphibole, pyroxene, garnet, hornblende, amphibole, gabbro |
| 10 | INTRUSIVE CONTACT  |
| 11 | METASEDIMENTS <sup>2</sup>   |
| 12 | Completarite, quartzite, gneiss, schist, mica schist, tuff, iron formation   |
| 13 | METASEDIMENTS <sup>2</sup>   |
| 14 | Completarite, quartzite, gneiss, schist, mica schist, garnet, amphibole, hornblende, pyroxene, amphibolite, iron formation   |
| 15 | METAVOLCANICS*   |
| 16 | Rhyolite   |
| 17 | Diabase to intermediate lavas, tuff, and gabbro, minor metamorphics  |
| 18 | BASIC AND INTERMEDIATE METAVOLCANICS <sup>3</sup>  |
| 19 | Intermediate to acidic, gabbro, amphibole, quartzite, schist, mica schist, hornblende schist, tuff, amphibolite  |
| 20 | UNDIFFERENTIATED METAVOLCANICS WITH SOME METASEDIMENTS   |
| 21 | Iron formation   |
- \* Sulphide mineralization.

- #### SYMBOLS
- |   |   |
|---|---|
| — | Geological boundary   |
| — | Synclinal axis  |
| — | Anticlinal axis   |
| — | Fault   |
| — | Lithaem   |
| — | Altitude in feet above mean sea level                               |
| — | Railway, with station or flagstop                                   |
| — | Motor road, Provincial highway number and approximate location only |
| — | Other road, approximate location only                               |
| — | Winter road, approximate location only                              |
| — | Aircraft landing facilities   |
| — | Larger community  |
| — | Smaller community   |
| — | Producing mine  |
| — | Past producing mine   |
| — | Mineral occurrence  |
| — | Mining Division with boundary                                       |
| — | District boundary   |
| — | Township boundary, surveyed   |
| — | Township boundary, unsurveyed                                       |
| — | Surveyed line   |
| — | Line of Section   |

\* Some of the porphyritic diabase may be of pre-Kewenawan age.

\* Metasediments<sup>2</sup> in age.

\* Formerly classified as Windigo, Cosmo and d. Formerly classified as Cochrane, Kewenaw, and formerly classified as Kewenaw.

The letter "G" preceding a rock unit number, for example "G-20", indicates interpretation from geophysical data in large drill-covered or unlogged areas, where a rock formation is too narrow to show colour and must be represented in black a short black bar appears in the appropriate legend book.

- #### MINERAL OCCURRENCES REFERENCE
- |    |          |    |            |
|----|----------|----|------------|
| As | Asbestos | Ma | Mart       |
| Au | Gold     | Mo | Molybdenum |
| Ag | Silver   | Ni | Nickel     |
| Ba | Barytes  | Pb | Pb         |
| Cu | Copper   | Py | Pyrite     |
| Fe | Iron     | Sn | Tin        |
| Li | Lithium  | Zn | Zinc       |

#### SOURCES OF INFORMATION

Geology from published maps of the Ontario Department of Mines, Geological Survey of Canada, and from unpublished maps of mining companies.

Cartography by B. Jackson and P. A. Rash, Ontario Department of Mines, 1965.

Base maps compiled from National Topographic Series at 4: N.W. 44 E.N. 48, 49, 50, 51, 52 and 53, 54, 55, 56, 57, 58, 59, 60, 61, 62, 63, 64, 65, 66, 67, 68, 69, 70, 71, 72, 73, 74, 75, 76, 77, 78, 79, 80, 81, 82, 83, 84, 85, 86, 87, 88, 89, 90, 91, 92, 93, 94, 95, 96, 97, 98, 99, 100.

Map 2102  
TASHOTA-GERALDTON SHEET  
Geological Compilation Series  
THUNDER BAY AND COCHRANE DISTRICTS

