

THESE TERMS GOVERN YOUR USE OF THIS DOCUMENT

Your use of this Ontario Geological Survey document (the “Content”) is governed by the terms set out on this page (“Terms of Use”). By downloading this Content, you (the “User”) have accepted, and have agreed to be bound by, the Terms of Use.

Content: This Content is offered by the Province of Ontario’s *Ministry of Northern Development and Mines* (MNDM) as a public service, on an “as-is” basis. Recommendations and statements of opinion expressed in the Content are those of the author or authors and are not to be construed as statement of government policy. You are solely responsible for your use of the Content. You should not rely on the Content for legal advice nor as authoritative in your particular circumstances. Users should verify the accuracy and applicability of any Content before acting on it. MNDM does not guarantee, or make any warranty express or implied, that the Content is current, accurate, complete or reliable. MNDM is not responsible for any damage however caused, which results, directly or indirectly, from your use of the Content. MNDM assumes no legal liability or responsibility for the Content whatsoever.

Links to Other Web Sites: This Content may contain links, to Web sites that are not operated by MNDM. Linked Web sites may not be available in French. MNDM neither endorses nor assumes any responsibility for the safety, accuracy or availability of linked Web sites or the information contained on them. The linked Web sites, their operation and content are the responsibility of the person or entity for which they were created or maintained (the “Owner”). Both your use of a linked Web site, and your right to use or reproduce information or materials from a linked Web site, are subject to the terms of use governing that particular Web site. Any comments or inquiries regarding a linked Web site must be directed to its Owner.

Copyright: Canadian and international intellectual property laws protect the Content. Unless otherwise indicated, copyright is held by the Queen’s Printer for Ontario.

It is recommended that reference to the Content be made in the following form: <Author’s last name>, <Initials> <year of publication>. <Content title>; Ontario Geological Survey, <Content publication series and number>, <total number of pages>p.

Use and Reproduction of Content: The Content may be used and reproduced only in accordance with applicable intellectual property laws. *Non-commercial* use of unsubstantial excerpts of the Content is permitted provided that appropriate credit is given and Crown copyright is acknowledged. Any substantial reproduction of the Content or any *commercial* use of all or part of the Content is prohibited without the prior written permission of MNDM. Substantial reproduction includes the reproduction of any illustration or figure, such as, but not limited to graphs, charts and maps. Commercial use includes commercial distribution of the Content, the reproduction of multiple copies of the Content for any purpose whether or not commercial, use of the Content in commercial publications, and the creation of value-added products using the Content.

Contact:

FOR FURTHER INFORMATION ON	PLEASE CONTACT:	BY TELEPHONE:	BY E-MAIL:
The Reproduction of Content	MNDM Publication Services	Local: (705) 670-5691 Toll Free: 1-888-415-9845, ext. 5691 (inside Canada, United States)	Pubsales@ndm.gov.on.ca
The Purchase of MNDM Publications	MNDM Publication Sales	Local: (705) 670-5691 Toll Free: 1-888-415-9845, ext. 5691 (inside Canada, United States)	Pubsales@ndm.gov.on.ca
Crown Copyright	Queen’s Printer	Local: (416) 326-2678 Toll Free: 1-800-668-9938 (inside Canada, United States)	Copyright@gov.on.ca

LES CONDITIONS CI-DESSOUS RÉGISSENT L'UTILISATION DU PRÉSENT DOCUMENT.

Votre utilisation de ce document de la Commission géologique de l'Ontario (le « contenu ») est régie par les conditions décrites sur cette page (« conditions d'utilisation »). En téléchargeant ce contenu, vous (l'« utilisateur ») signifiez que vous avez accepté d'être lié par les présentes conditions d'utilisation.

Contenu : Ce contenu est offert en l'état comme service public par le *ministère du Développement du Nord et des Mines* (MDNM) de la province de l'Ontario. Les recommandations et les opinions exprimées dans le contenu sont celles de l'auteur ou des auteurs et ne doivent pas être interprétées comme des énoncés officiels de politique gouvernementale. Vous êtes entièrement responsable de l'utilisation que vous en faites. Le contenu ne constitue pas une source fiable de conseils juridiques et ne peut en aucun cas faire autorité dans votre situation particulière. Les utilisateurs sont tenus de vérifier l'exactitude et l'applicabilité de tout contenu avant de l'utiliser. Le MDNM n'offre aucune garantie expresse ou implicite relativement à la mise à jour, à l'exactitude, à l'intégralité ou à la fiabilité du contenu. Le MDNM ne peut être tenu responsable de tout dommage, quelle qu'en soit la cause, résultant directement ou indirectement de l'utilisation du contenu. Le MDNM n'assume aucune responsabilité légale de quelque nature que ce soit en ce qui a trait au contenu.

Liens vers d'autres sites Web : Ce contenu peut comporter des liens vers des sites Web qui ne sont pas exploités par le MDNM. Certains de ces sites pourraient ne pas être offerts en français. Le MDNM se dégage de toute responsabilité quant à la sûreté, à l'exactitude ou à la disponibilité des sites Web ainsi reliés ou à l'information qu'ils contiennent. La responsabilité des sites Web ainsi reliés, de leur exploitation et de leur contenu incombe à la personne ou à l'entité pour lesquelles ils ont été créés ou sont entretenus (le « propriétaire »). Votre utilisation de ces sites Web ainsi que votre droit d'utiliser ou de reproduire leur contenu sont assujettis aux conditions d'utilisation propres à chacun de ces sites. Tout commentaire ou toute question concernant l'un de ces sites doivent être adressés au propriétaire du site.

Droits d'auteur : Le contenu est protégé par les lois canadiennes et internationales sur la propriété intellectuelle. Sauf indication contraire, les droits d'auteurs appartiennent à l'Imprimeur de la Reine pour l'Ontario.

Nous recommandons de faire paraître ainsi toute référence au contenu : nom de famille de l'auteur, initiales, année de publication, titre du document, Commission géologique de l'Ontario, série et numéro de publication, nombre de pages.

Utilisation et reproduction du contenu : Le contenu ne peut être utilisé et reproduit qu'en conformité avec les lois sur la propriété intellectuelle applicables. L'utilisation de courts extraits du contenu à des fins *non commerciales* est autorisée, à condition de faire une mention de source appropriée reconnaissant les droits d'auteurs de la Couronne. Toute reproduction importante du contenu ou toute utilisation, en tout ou en partie, du contenu à des fins *commerciales* est interdite sans l'autorisation écrite préalable du MDNM. Une reproduction jugée importante comprend la reproduction de toute illustration ou figure comme les graphiques, les diagrammes, les cartes, etc. L'utilisation commerciale comprend la distribution du contenu à des fins commerciales, la reproduction de copies multiples du contenu à des fins commerciales ou non, l'utilisation du contenu dans des publications commerciales et la création de produits à valeur ajoutée à l'aide du contenu.

Renseignements :

POUR PLUS DE RENSEIGNEMENTS SUR	VEUILLEZ VOUS ADRESSER À :	PAR TÉLÉPHONE :	PAR COURRIEL :
la reproduction du contenu	Services de publication du MDNM	Local : (705) 670-5691 Numéro sans frais : 1 888 415-9845, poste 5691 (au Canada et aux États-Unis)	Pubsales@ndm.gov.on.ca
l'achat des publications du MDNM	Vente de publications du MDNM	Local : (705) 670-5691 Numéro sans frais : 1 888 415-9845, poste 5691 (au Canada et aux États-Unis)	Pubsales@ndm.gov.on.ca
les droits d'auteurs de la Couronne	Imprimeur de la Reine	Local : 416 326-2678 Numéro sans frais : 1 800 668-9938 (au Canada et aux États-Unis)	Copyright@gov.on.ca



SYMBOLS

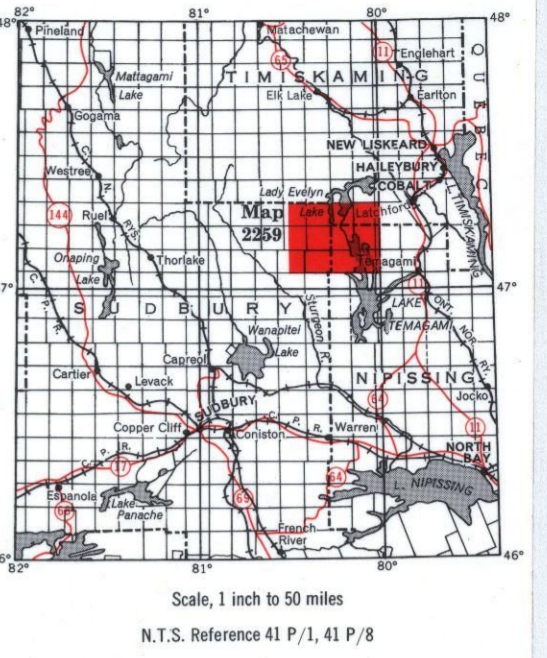
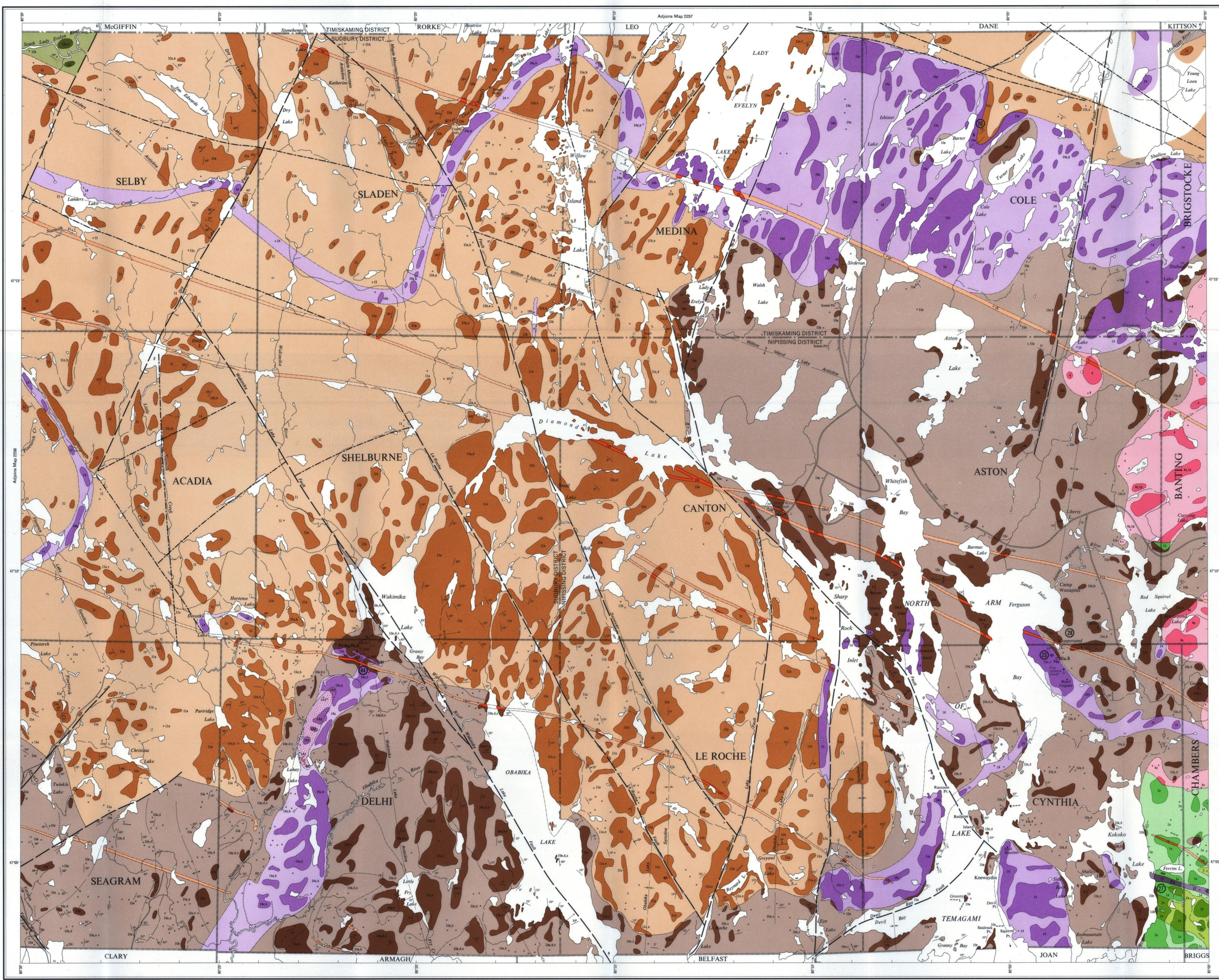
- Glacial striae.
- Esker.
- Small bedrock outcrop.
- Area of bedrock outcrop.
- Bedding, horizontal.
- Bedding, top unknown; (inclined, vertical).
- Bedding, top (arrow) from grain gradation; (inclined, vertical, overturned).
- Bedding, top (arrow) from cross bedding; (inclined, vertical, overturned).
- Schistosity; (horizontal, inclined, vertical).
- Gneissosity; (horizontal, inclined, vertical).
- Foliation; (horizontal, inclined, vertical).
- Lineation with plunge.
- Geological boundary, observed.
- Geological boundary, position interpreted.
- Geological boundary, deduced from topographic.
- Fault; (observed, assumed). Spot indicates down throw side, arrows indicate horizontal movement.
- Lineament.
- Drag folds with plunge.
- Anticline, syncline, with plunge.
- Vein.
- Shaft.
- Magnetic attraction.
- Radioactivity.
- Motor road.
- Other road.
- Trail, portage, winter road.
- Building.
- District boundary, approximate position only.
- Township boundary, base line or meridian, approximate position only.
- Township boundary, unsurveyed.
- Surveyed line, approximate position only.
- Location of mining property. See list of properties.

SOURCES OF INFORMATION

Geology of Seagram Township by H. D. Meyn, 1969.
Geology of the remaining townships by K. D. Card, 1969. Geology is not to be surveyed lines.
Maps and plans of mining companies.
Map 179A, Onaping, by W. H. Collins, Geological Survey of Canada, Mem. 56, 1917.
Maps 184-1, Township of Delhi, published 1984 and 1987, Northwestern Timiskaming Area, published 1984, Ontario Department of Mines.
Aeromagnetic maps 1503G and 1504G, Geological Survey of Canada.
Preliminary maps:
P. 207, Maple Mountain Sheet, scale 1 inch to 2 miles, issued 1965.
P. 570, Seagram, and part of Clara Townships, scale 1 inch to 2 miles, issued 1969.
P. 585, Lady Evelyn Lake Sheet, scale 1 inch to 1 mile, issued 1970.
Cartography by C. Karpates and assistants, Ministry of Natural Resources, 1972.
Base map derived from maps of the Forest Resources Inventory, Ministry of Natural Resources, with additional information by K. D. Card.
Magnetic declination in the area was approximately 93° W, 1969.

LIST OF PROPERTIES

1. Argemum Silver Mines Ltd.
2. Bergeron Lake deposit, van Nostrand Township.†
3. Darby Silver Mine, Whitson Township.†
4. Gollie Lake deposit, van Nostrand Township.†
5. Nicotille Lake deposit, van Nostrand Township.†
6. Skull Lake property, Speight Township.†
7. White Reserve Mine, Whitson Township.†
8. Armstrong, W. S., Estate, Speight Township.†
9. Beatty, W. A., Charters Township.†
10. Byberg, Andrew.
11. Charters Township.†
12. Gowganda-Duggan Mine, Donovan Township.†
13. Thompson Mine, Donovan Township.†
14. Canadian Johns-Manville Co. Ltd.
15. Dundee, Grog, Mercier, Seagram, Stobie, and Turner Townships.†
16. (Harrison Minerals Ltd., T. Saville claims), Turner Township.†
17. Marconi Township (1968).†
18. Can-Am Mines Ltd. (1967), Marconi Township.†
19. Cole deposit, Cole Township.
20. Denison Mines Ltd., Clara, DeMores, Seagram, and Turner Townships.†
21. Eleanor Lake deposit, Ray Township.†
22. Fournier Lake prospect, Leonard Township.†
23. Garver, William, Estate, Charters Township.†
24. Greshy, G. J., Brewster Township.†
25. Haines claim, Donovan Township.†
26. Hardie, Arnold, Coppersand Lake deposit, Cynthia Township.†
27. Hardiman Bay Mines Ltd. (1966), Brewster Township.†
28. Hillcoat, James, Donovan Township.†
29. Ironco Mining and Smelting Co. Ltd., Cotton Township.†
30. Knevel Mining Group Ltd., (1966), Cynthia and Aston Townships.
31. King, Henry
32. Boundary claims, Speight Township.†
33. Munroe Lake deposit, Speight Township.†
34. Lady Evelyn Lake deposit, Leo Township.†
35. Last, Henry.
36. Clara Township.†
37. DeKorek Township.†
38. Turner Township.†
39. Lynch deposit, Speight Township.†
40. Mark, Howard.
41. First Bay deposit, Barr Township.†
42. Island deposit, Klock Township.†
43. Island deposit, Dane and Kittson Townships.†
44. Klock deposits, Barr Township.†
45. Second Bay deposit, Barr Township.†
46. McIntosh, R. E., Turner Township.†
47. Melton Explorations Ltd., Stull Township.†
48. Moore, William, Speight Township.†
49. New Delhi Mines Ltd., Delhi Township.†
50. Noranda Exploration Co.
51. Clara Township.†
52. Turner and DeKorek Townships.†
53. Ourgold Mining Company Ltd., Corkhill Township.†
54. Reekie Lake occurrence, Leckie Township.†
55. Ruston Mining Corp., Leith Township.†
56. Siskie Lake lead-silver deposit, Siskie Township.†
57. Sucker Gut Lake deposit, Leo Township.†
58. Tremble Lake deposit, Ray Township.†
59. Truss deposit, Auld Township.†
60. Walton, H. G., Bradley-Donaldson Mine, Auld Township.†
61. Welsh, B. M.
62. Charon Silver Mine, Auld Township.†
63. Charters Township.†
64. Triangle Silver Mine, Auld Township.†
65. Wilder, Frank, Donovan Township.†
66. Ownership of properties as of December 31, 1969. Date in square brackets (1969) indicates year of last major work on property. For further information, see report.
- † Appears on accompanying maps of Geological Report 106.



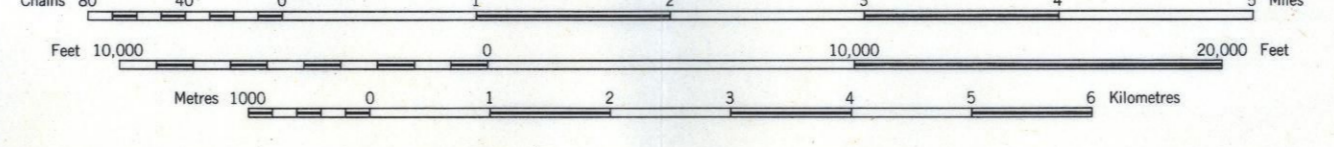
Scale, 1 inch to 50 miles
N.T.S. Reference 41 P. 1, 41 P. 8

LEGEND

- CENOZOIC***
QUATERNARY
RECENT
Stream, lake, and swamp deposits.
- PLEISTOCENE
Glacial, glaciofluvial, and glaciolacustrine deposits.
- UNCONFORMITY
- PRECAMBRIAN***
PROTEROZOIC
MAFIC INTRUSIONS
LATE DIABASE INTRUSIONS
14a Diabase
15a Olivine diabase.
- INTRUSIVE CONTACT**
NIPISSING DIABASE INTRUSIONS*
14 Unsubdivided
14a Pyroxene gabbro
14b Hornblende gabbro, metagabbro
14c Epitole amphibolite
14d Granophyre.†
- INTRUSIVE CONTACT**
HURONIAN SUPERGROUP
COBALT GROUP
BAR RIVER FORMATION†
13 Unsubdivided
13a Sandstone.
- GORDON LAKE FORMATION†**
12 Unsubdivided
12a Sandstone
12b Argillite.†
12c Chert, chert breccia.
- LORRAIN FORMATION†**
11 Unsubdivided
11a Green and grey micaceous pebbly sandstone.
11b Feltitic sandstone.
11c White sandstone.
11d Ferruginous sandstone.
11e Argillaceous sandstone, greywacke, siltstone.
11f Conglomerate.
- GOWGANDA FORMATION†**
10 Unsubdivided
10a Pebbly muscovite-polyimicite paragoniferite, greywacke, siltstone, or laminated argillite matrix.
10b Polymictic orthoconglomerate, greywacke or siltstone matrix.
10c Sandstone, felsitic sandstone, greywacke.
10d Argillite, siltstone.
10e Laminated argillite.
- QUIRK LAKE GROUP**
SERPENT FORMATION†
9a Sandstone.
9b Argillite, siltstone.
- ESPAÑOLA FORMATION†**
8 Limestone, siltstone.
- BRUCE FORMATION†**
7a Polymictic conglomerate.
7b Sandstone.
- HOUGH LAKE GROUP**
MISSISSAUGA FORMATION†
6 Unsubdivided
6a Sandstone.
6b Argillite, siltstone, argillaceous schist.
6c Polymictic conglomerate.
- UNCONFORMITY
- ARCHEAN**
MAFIC INTRUSIONS
EARLY MAFIC INTRUSIONS†
5 Gabbro, metagabbro, diabase.
- INTRUSIVE CONTACT**
FELSIC INTRUSIVE AND METAMORPHIC ROCKS
GRANITIC ROCKS*
4a Quartz monzonite, granodiorite.
4b Porphyritic quartz monzonite, granodiorite, quartz diorite.†
- GNEISS AND MIGMATITES†**
3 Unsubdivided.
3a Quartz-feldspar gneiss, migmatite.
3b Mafic migmatite, gneissite.
- METAVOLCANICS AND METASEDIMENTS**
FELSIC METAVOLCANICS AND METASEDIMENTS*
2 Unsubdivided.
2a Rhyolite, trachyte, intermediate rhyolite.
2b Felsic tuff, breccia, agglomerate.
2c Sandstone, argillite, conglomerate.†
2d Felsic schist.†
- MAFIC METAVOLCANICS***
1 Unsubdivided.
1a Basalt, andesite.
1b Amphibolite, amphibolite schist.
1c Diabase.†
1f Iron formation.
- Breccia.
- Ag Silver. Ni Nickel.†
Au Gold. Pb Lead.
carb Carbonate. Q Quartz.
Co Cobalt.† S Quartz-carbonate.
Cu Copper. S Sulfide mineralization.
Ery Erythrite.† U Uranium.†
Fe Iron. Zn Zinc.†
nc Niccolite.†

Map 2259
DIAMOND LAKE
NIPISSING, SUDBURY and TIMISKAMING DISTRICTS

Scale 1: 63,360 or 1 Inch to 1 Mile



*Unconsolidated deposits. Cenozoic deposits are represented by the lighter colored and uncoloured parts on the map.
†Bedrock geology. Outcrops and inferred extensions of each rock map unit are shown, respectively, in deep and light lines of the same colour. Where in places a formation is too narrow to show colour and must be represented in black, a short black bar appears in the appropriate block.
‡The rocks of these units are subdivided lithologically and the order does not imply age relationship within the group.
§Nipissing-type.
¶Timiskaming-type.
††Appears on accompanying maps of Geological Report 106.