

THESE TERMS GOVERN YOUR USE OF THIS DOCUMENT

Your use of this Ontario Geological Survey document (the “Content”) is governed by the terms set out on this page (“Terms of Use”). By downloading this Content, you (the “User”) have accepted, and have agreed to be bound by, the Terms of Use.

Content: This Content is offered by the Province of Ontario’s *Ministry of Northern Development and Mines* (MNDM) as a public service, on an “as-is” basis. Recommendations and statements of opinion expressed in the Content are those of the author or authors and are not to be construed as statement of government policy. You are solely responsible for your use of the Content. You should not rely on the Content for legal advice nor as authoritative in your particular circumstances. Users should verify the accuracy and applicability of any Content before acting on it. MNDM does not guarantee, or make any warranty express or implied, that the Content is current, accurate, complete or reliable. MNDM is not responsible for any damage however caused, which results, directly or indirectly, from your use of the Content. MNDM assumes no legal liability or responsibility for the Content whatsoever.

Links to Other Web Sites: This Content may contain links, to Web sites that are not operated by MNDM. Linked Web sites may not be available in French. MNDM neither endorses nor assumes any responsibility for the safety, accuracy or availability of linked Web sites or the information contained on them. The linked Web sites, their operation and content are the responsibility of the person or entity for which they were created or maintained (the “Owner”). Both your use of a linked Web site, and your right to use or reproduce information or materials from a linked Web site, are subject to the terms of use governing that particular Web site. Any comments or inquiries regarding a linked Web site must be directed to its Owner.

Copyright: Canadian and international intellectual property laws protect the Content. Unless otherwise indicated, copyright is held by the Queen’s Printer for Ontario.

It is recommended that reference to the Content be made in the following form: <Author’s last name>, <Initials> <year of publication>. <Content title>; Ontario Geological Survey, <Content publication series and number>, <total number of pages>p.

Use and Reproduction of Content: The Content may be used and reproduced only in accordance with applicable intellectual property laws. *Non-commercial* use of unsubstantial excerpts of the Content is permitted provided that appropriate credit is given and Crown copyright is acknowledged. Any substantial reproduction of the Content or any *commercial* use of all or part of the Content is prohibited without the prior written permission of MNDM. Substantial reproduction includes the reproduction of any illustration or figure, such as, but not limited to graphs, charts and maps. Commercial use includes commercial distribution of the Content, the reproduction of multiple copies of the Content for any purpose whether or not commercial, use of the Content in commercial publications, and the creation of value-added products using the Content.

Contact:

FOR FURTHER INFORMATION ON	PLEASE CONTACT:	BY TELEPHONE:	BY E-MAIL:
The Reproduction of Content	MNDM Publication Services	Local: (705) 670-5691 Toll Free: 1-888-415-9845, ext. 5691 (inside Canada, United States)	Pubsales@ndm.gov.on.ca
The Purchase of MNDM Publications	MNDM Publication Sales	Local: (705) 670-5691 Toll Free: 1-888-415-9845, ext. 5691 (inside Canada, United States)	Pubsales@ndm.gov.on.ca
Crown Copyright	Queen’s Printer	Local: (416) 326-2678 Toll Free: 1-800-668-9938 (inside Canada, United States)	Copyright@gov.on.ca

LES CONDITIONS CI-DESSOUS RÉGISSENT L'UTILISATION DU PRÉSENT DOCUMENT.

Votre utilisation de ce document de la Commission géologique de l'Ontario (le « contenu ») est régie par les conditions décrites sur cette page (« conditions d'utilisation »). En téléchargeant ce contenu, vous (l'« utilisateur ») signifiez que vous avez accepté d'être lié par les présentes conditions d'utilisation.

Contenu : Ce contenu est offert en l'état comme service public par le *ministère du Développement du Nord et des Mines* (MDNM) de la province de l'Ontario. Les recommandations et les opinions exprimées dans le contenu sont celles de l'auteur ou des auteurs et ne doivent pas être interprétées comme des énoncés officiels de politique gouvernementale. Vous êtes entièrement responsable de l'utilisation que vous en faites. Le contenu ne constitue pas une source fiable de conseils juridiques et ne peut en aucun cas faire autorité dans votre situation particulière. Les utilisateurs sont tenus de vérifier l'exactitude et l'applicabilité de tout contenu avant de l'utiliser. Le MDNM n'offre aucune garantie expresse ou implicite relativement à la mise à jour, à l'exactitude, à l'intégralité ou à la fiabilité du contenu. Le MDNM ne peut être tenu responsable de tout dommage, quelle qu'en soit la cause, résultant directement ou indirectement de l'utilisation du contenu. Le MDNM n'assume aucune responsabilité légale de quelque nature que ce soit en ce qui a trait au contenu.

Liens vers d'autres sites Web : Ce contenu peut comporter des liens vers des sites Web qui ne sont pas exploités par le MDNM. Certains de ces sites pourraient ne pas être offerts en français. Le MDNM se dégage de toute responsabilité quant à la sûreté, à l'exactitude ou à la disponibilité des sites Web ainsi reliés ou à l'information qu'ils contiennent. La responsabilité des sites Web ainsi reliés, de leur exploitation et de leur contenu incombe à la personne ou à l'entité pour lesquelles ils ont été créés ou sont entretenus (le « propriétaire »). Votre utilisation de ces sites Web ainsi que votre droit d'utiliser ou de reproduire leur contenu sont assujettis aux conditions d'utilisation propres à chacun de ces sites. Tout commentaire ou toute question concernant l'un de ces sites doivent être adressés au propriétaire du site.

Droits d'auteur : Le contenu est protégé par les lois canadiennes et internationales sur la propriété intellectuelle. Sauf indication contraire, les droits d'auteurs appartiennent à l'Imprimeur de la Reine pour l'Ontario.

Nous recommandons de faire paraître ainsi toute référence au contenu : nom de famille de l'auteur, initiales, année de publication, titre du document, Commission géologique de l'Ontario, série et numéro de publication, nombre de pages.

Utilisation et reproduction du contenu : Le contenu ne peut être utilisé et reproduit qu'en conformité avec les lois sur la propriété intellectuelle applicables. L'utilisation de courts extraits du contenu à des fins *non commerciales* est autorisée, à condition de faire une mention de source appropriée reconnaissant les droits d'auteurs de la Couronne. Toute reproduction importante du contenu ou toute utilisation, en tout ou en partie, du contenu à des fins *commerciales* est interdite sans l'autorisation écrite préalable du MDNM. Une reproduction jugée importante comprend la reproduction de toute illustration ou figure comme les graphiques, les diagrammes, les cartes, etc. L'utilisation commerciale comprend la distribution du contenu à des fins commerciales, la reproduction de copies multiples du contenu à des fins commerciales ou non, l'utilisation du contenu dans des publications commerciales et la création de produits à valeur ajoutée à l'aide du contenu.

Renseignements :

POUR PLUS DE RENSEIGNEMENTS SUR	VEUILLEZ VOUS ADRESSER À :	PAR TÉLÉPHONE :	PAR COURRIEL :
la reproduction du contenu	Services de publication du MDNM	Local : (705) 670-5691 Numéro sans frais : 1 888 415-9845, poste 5691 (au Canada et aux États-Unis)	Pubsales@ndm.gov.on.ca
l'achat des publications du MDNM	Vente de publications du MDNM	Local : (705) 670-5691 Numéro sans frais : 1 888 415-9845, poste 5691 (au Canada et aux États-Unis)	Pubsales@ndm.gov.on.ca
les droits d'auteurs de la Couronne	Imprimeur de la Reine	Local : 416 326-2678 Numéro sans frais : 1 800 668-9938 (au Canada et aux États-Unis)	Copyright@gov.on.ca

LEGEND

PHANEROZOIC

CENOZOIC*

QUATERNARY

PLEISTOCENE AND RECENT

Till, lacustrine clay, sand, raised beach deposits, alluvium.

UNCONFORMITY

PRECAMBRIAN*

EARLY PRECAMBRIAN (ARCHEAN)

LATE MAFIC INTRUSIVE ROCKS

12a Unsubdivided.
12b Amphibole (pyroxene) porphyry.
12c Equigranular, biotite-actinolite gabbro.
12d Biotite amphibolite.

INTRUSIVE CONTACT

FELSIC INTERMEDIATE AND MAFIC INTRUSIVE ROCKS

ESOX AND FURLONGE LAKE STOCKS

11 Unsubdivided.
11a Leucocratic quartz monzonite and granite.
11b Porphyritic quartz monzonite.
11c Agranitic and stromatic contact migmatite.

INTRUSIVE CONTACT

JACKFISH LAKE COMPLEX

10 Unsubdivided.
10a Hornblende syenodiorite.
10b Porphyritic hornblende syenodiorite.
10c Porphyritic quartz monzonite.
10d Stromatic and agmatic contact migmatite.
10e Aplite, pegmatite.
10f Leucocratic biotite trondhjemite.

INTRUSIVE CONTACT

LAWRENCE LAKE BATHOLITH

9 Unsubdivided.
9a Mixed contact phase.
9b Biotite-hornblende diorite.
9c Biotite-hornblende quartz diorite.
9d Actinolite diorite.
9e Granodiorite.
9f Trondhjemite.
9g Gabbro and ultramafic rocks.
9h Porphyritic dikes.
9i Aplite and felsite dikes.
9j Inclusions.

INTRUSIVE CONTACT

SUBVOLCANIC ROCKS

ESOX LAKE PORPHYRY

8 Unsubdivided.
8a Biotite-feldspar-quartz porphyry.
8b Biotite-quartz-feldspar porphyry.
8c Brecciated, auto-brecciated.
8d Cataclastic breccia, sericite schist, phyllonite.

DIKE ROCKS

7a Unsubdivided.
7b Quartz-feldspar porphyry.*
7c Feldspar porphyry.*
7d Amphibole (hornblende) quartz-feldspar porphyry.*
7e Felsite.*
7f Leucocratic biotite trondhjemite.
7g Carbonate-sericite schist.
7h Carbonatized.

INTRUSIVE CONTACT

METAMORPHOSED MAFIC AND ULTRAMAFIC INTRUSIVE ROCKS

6a Peridotite (dunite in part).
6b Pyroxenite.
6c Gabbro.
6d Quartz-amphibole gabbro.
6e Leucocratic gabbro, gabbroic anorthosite.
6f Omphacite, kessyite gabbro.
6g Porphyritic (plagioclase) gabbro.
6h Serpentinized.
6i Carbonatized.
6j Schistose.
6k Amphibolite.
6l Magnetite-bearing.
6m Talcose.

INTRUSIVE CONTACT

METAVOLCANICS AND METASEDIMENTS

5a Chert.
5b Ferruginous chert.
5c Iron formation.

Clastic Metasediments

4a Unsubdivided.
4b Medium- to coarse-grained arkosic wacke.
4c Fine-grained arkosic wacke.
4d Silty, mudstone.
4e Mainly thick-bedded.
4f Mainly medium-bedded.
4g Many thin-bedded.
4h Laminated.
4i Flashes, load casts.
4j Conglomerate, pebble and granule.
4k Tuffaceous.
4l Green tuffwacke.
4m Schist, phyllite, slate.
4n Carbonatized.
4o Cherty.
4p Gneissic regolith-like conglomerate.
4q Graphitic.

FELSIC METAVOLCANICS

3a Unsubdivided.
3b Flow.
3c Fragmental.
3d Tuff-breccia.
3e Lapilli tuff.
3f Tuff.
3g Flow banding.
3h Carbonatized.
3i Sericite schist.
3j Sericite schist.

INTERMEDIATE METAVOLCANICS

2a Unsubdivided.
2b Tuff-breccia.
2c Agglomeratic tuff-breccia.
2d Lapilli tuff.
2e Tuff, crystal tuff.
2f Chlorite-sericite schist.
2g Carbonatized.
2h Porphyritic.
2i Metasandstone.
2m Andesitic composition.

MAFIC METAVOLCANICS

1a Flow (unsubdivided).
1b Pillow flow.
1c Amygdaloidal flow.
1d Volcanic flow.
1e Massive flow.
1f Coarse-grained flow.*
1g Porphyritic flow.
1h Flow breccia.
1i Pillow breccia, hyaloclastic breccia, equigranular tuff.
1j Tuff-breccia, agglomeratic tuff-breccia.
1k Lapilli tuff.
1l Tuff.
1m Chlorite schist.
1n Magnetite, garnet, biotite, feldspar, hornblende schist and gneiss.
1o Amphibolite.
1p Carbonatized.
1q Magnetite-bearing.
1r Hornblende flow.
1s Metasandstone.
1t Andesitic composition.

AG

Silver.

asp Arsenopyrite.

Au Gold.

Cu Copper.

gf Graphite.

py Pyrrhotite.

py Pyrite.

qv Quartz vein.

*Unconsolidated deposits. Cenozoic deposits are represented by the lighter coloured parts of the map.

Bedrock geology. Outcrops and inferred extensions of each rock unit are shown respectively in deep and light tones of the same colour.

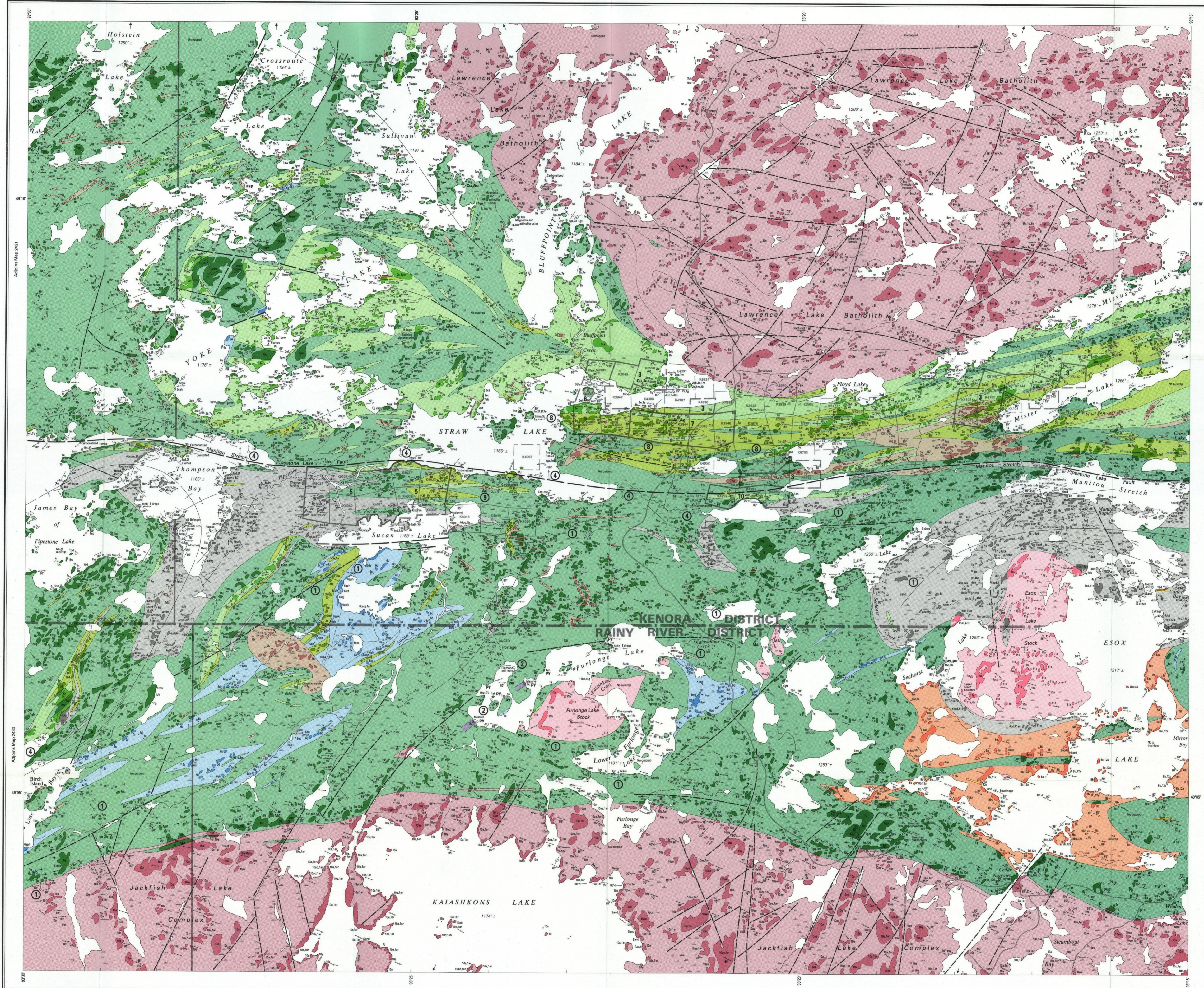
*Contains some metasedimentary volcanic rocks.

*May be proclastic.

*May be volcanic in part, especially west of Miter Lake.

*May be subvolcanic dikes in part.

*May be intrusive in part.



Scale 1 inch to 50 miles
N.T.S. Reference 52 F3

SYMBOLS

- Glacial striae. Glacial fluting or drumlin.
- Esker.
- Bedrock (small outcrop, area of outcrop).
- Bedding, horizontal.
- Bedding, top unknown; (inclined, vertical).
- Bedding, top indicated by arrow; (inclined, vertical, overturned).
- Bedding, top (arrow from grain gradation); (inclined, vertical, overturned).
- Bedding, top (arrow from cross bedding); (inclined, vertical, overturned).
- Bedding, top (arrow from relationship of cleavage and bedding); (inclined, overturned).
- Lava flow, top (arrow from pillows shape and packing). Lava flow; top in direction of arrow.
- Direction of paleocurrent.
- Schistosity; (horizontal, inclined, vertical).
- Gneissosity; (horizontal, inclined, vertical).
- Foliation; (horizontal, inclined, vertical).
- Banding; (horizontal, inclined, vertical).
- Lineation with plunge.
- Geological boundary (observed, position interpreted, deduced from geophysics).
- Magnetic contour value in gammas. Magnetic attraction.
- Fault; (observed, assumed). Spot indicates down throw side, arrows indicate horizontal movement.
- Lineament.
- Joining; (horizontal, inclined, vertical).
- Drag folds with plunge.
- Anticline, syncline, with plunge.
- Drill hole; (vertical, inclined, projected vertically, projected up dip). Overburden shown.
- Location of sample.
- Vein, vein network. Width in inches or feet.
- RA Radioactivity.
- Swamp.
- Motor road. Provincial highway number enclosed where applicable.
- Other road. Trail, portage, winter road.
- International or Provincial boundary.
- VI County, District, Regional or District Municipal Boundary, with mile post.
- VI Municipal Boundary, (City, Town, Improvement District, Incorporated Township), with milepost.
- VI Township, Indian Reserve, Meridian, Base Line, Provincial Park, with milepost. (Surveyed, unsurveyed).
- Mining property, surveyed. Mineral deposit or mining property, unsurveyed.
- Surveyed line.
- Unsurveyed line.

All boundary and survey lines are approximate position only.

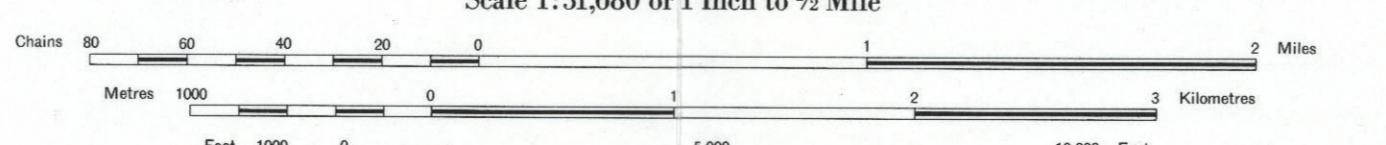
Some symbols may not occur on this map.

SOURCES OF INFORMATION

Geology by G.R. Edwards and R.H. Sutcliffe and assistants, Ontario Geological Survey, 1976.
Geology is not tied to surveyed lines.
Resident Geologist's Files, Ontario Ministry of Natural Resources, Kenora.
Published maps and reports of the Ontario Geological Survey, Ministry of Natural Resources.
Preliminary map (OGS, P. 1243, Straw Lake Area, scale 1 inch to 1/2 mile, issued 1977).
Location of small private lots not shown may be obtained from the Surveys and Mapping Branch, Ministry of Natural Resources, claim maps M2430 and M2471, scale 1 inch to 40 chains.
Cartography by D.J. Laroche and assistants, Surveys and Mapping Branch, 1983.
Base map derived from maps of the Forest Resources Inventory, Surveys and Mapping Branch, with additional information by G.R. Edwards.
Magnetic declination in the area was approximately 6°15' East, in 1975.
Parts of this publication may be quoted if credit is given. It is recommended that reference to this map be made in the following form:
Edwards, G.R. and Sutcliffe, R.H. 1984. Straw Lake, Ontario Geological Survey Map 2463, Precambrian Geology Series, scale 1 inch to 1/2 mile. Geology 1976.

Ontario Geological Survey
Map 2463
STRAW LAKE
KENORA and RAINY RIVER DISTRICTS

Scale 1:31,680 or 1 Inch to 1/2 Mile



GEOGRAPHIC NAMES

1. The name "Manitou Rapids" is not approved by the Ontario Geographic Names Board (OGNB). It is used on this map as a reference point.
2. The OGNB approves the spelling of "Kaiashkons Lake" as shown on this map. Ontario Geological Survey (OGS) report 222 shows this name as "Kaiashkons Lake".
3. Similarly the OGNB approves the names "Kaiashkons Creek" and "Lower Furlonge Lake" which appear in OGS report 222 as "Loonhartn River" and "Banding Lady Lake" respectively.

PROPERTIES, MINERAL OCCURRENCES

1. Canadian Nickel Company Limited.
2. Conwest Exploration Company Limited (1952).
3. Eustace, A.J.
4. Freeport Canadian Exploration Company (1971).
5. Mathew, J.A., Estate.
6. McKay, G.H.
7. Mineral Mines Limited (Straw Lake Beach Mine).
8. Proxel Limited.
9. Straw Lake Occurrence (19347).
10. Viger, S.J., Property.

Published 1984