

THESE TERMS GOVERN YOUR USE OF THIS DOCUMENT

Your use of this Ontario Geological Survey document (the “Content”) is governed by the terms set out on this page (“Terms of Use”). By downloading this Content, you (the “User”) have accepted, and have agreed to be bound by, the Terms of Use.

Content: This Content is offered by the Province of Ontario’s *Ministry of Energy, Northern Development and Mines* (ENDM) as a public service, on an “as-is” basis. Recommendations and statements of opinion expressed in the Content are those of the author or authors and are not to be construed as statement of government policy. You are solely responsible for your use of the Content. You should not rely on the Content for legal advice nor as authoritative in your particular circumstances. Users should verify the accuracy and applicability of any Content before acting on it. ENDM does not guarantee, or make any warranty express or implied, that the Content is current, accurate, complete or reliable. ENDM is not responsible for any damage however caused, which results, directly or indirectly, from your use of the Content. ENDM assumes no legal liability or responsibility for the Content whatsoever.

Links to Other Web Sites: This Content may contain links, to Web sites that are not operated by ENDM. Linked Web sites may not be available in French. ENDM neither endorses nor assumes any responsibility for the safety, accuracy or availability of linked Web sites or the information contained on them. The linked Web sites, their operation and content are the responsibility of the person or entity for which they were created or maintained (the “Owner”). Both your use of a linked Web site, and your right to use or reproduce information or materials from a linked Web site, are subject to the terms of use governing that particular Web site. Any comments or inquiries regarding a linked Web site must be directed to its Owner.

Copyright: Canadian and international intellectual property laws protect the Content. Unless otherwise indicated, copyright is held by the Queen’s Printer for Ontario.

It is recommended that reference to the Content be made in the following form:

Karrow, P.F. 1993. Quaternary Geology, Stratford area; Ontario Geological Survey, Map 2559, scale 1:50 000.

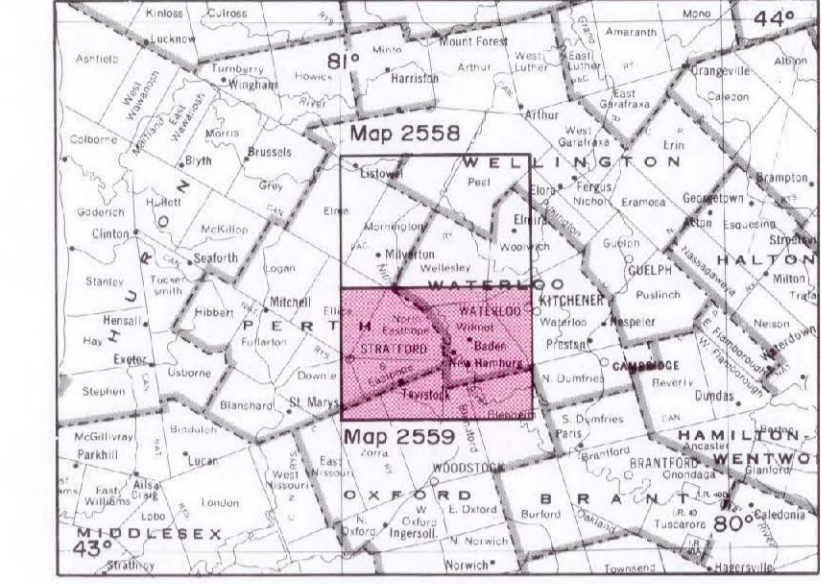
Use and Reproduction of Content: The Content may be used and reproduced only in accordance with applicable intellectual property laws. *Non-commercial* use of unsubstantial excerpts of the Content is permitted provided that appropriate credit is given and Crown copyright is acknowledged. Any substantial reproduction of the Content or any *commercial* use of all or part of the Content is prohibited without the prior written permission of ENDM. Substantial reproduction includes the reproduction of any illustration or figure, such as, but not limited to graphs, charts and maps. Commercial use includes commercial distribution of the Content, the reproduction of multiple copies of the Content for any purpose whether or not commercial, use of the Content in commercial publications, and the creation of value-added products using the Content.

Contact:

FOR FURTHER INFORMATION ON	PLEASE CONTACT:	BY TELEPHONE:	BY E-MAIL:
The Reproduction of the EIP or Content	ENDM Publication Services	Local: (705) 670-5691 Toll-Free: 1-888-415-9845, ext. 5691 (inside Canada, United States)	Pubsales.ndm@ontario.ca
The Purchase of ENDM Publications	ENDM Publication Sales	Local: (705) 670-5691 Toll-Free: 1-888-415-9845, ext. 5691 (inside Canada, United States)	Pubsales.ndm@ontario.ca
Crown Copyright	Queen’s Printer	Local: (416) 326-2678 Toll-Free: 1-800-668-9938 (inside Canada, United States)	Copyright@ontario.ca

Mines and Minerals Division Ontario Geological Survey MAP 2559 QUATERNARY GEOLOGY STRATFORD AREA

Scale 1:50 000 NTS Reference: 40 P/7



LOCATION MAP 1:1584 000 or 1 inch to 25 miles ©Queen's Printer for Ontario, 1983. This map is published with the permission of V.G. Mine, Director, Ontario Geological Survey.

LEGEND

- PHANEROZOIC
CENOZOIC
QUATERNARY
RECENT
16 Stream Alluvium: gravel, sand, silt and clay
15 Bog and Swamp Deposits: peat, muck and marl
PLEISTOCENE
LATE WISCONSINAN
UNDIVIDED
14 Lacustrine Deposits: silt and clay
13 Outwash Sand: well sorted, fine sand and/or gravel to coarse sand and/or gravel textured
12 Outwash Gravel: well sorted, fine gravel and/or sand to medium gravel and/or sand textured
11 Ice-contact Sand: poorly to well sorted, fine sand and/or gravel to coarse sand and/or gravel textured
10 Ice-contact Gravel: poorly to well sorted, fine gravel and/or sand to coarse gravel and/or sand textured
PORT BRUCE STAGE
9 ELMA TILL: silty to sandy till
8 WARTBURG TILL: clay till
7 STRATFORD TILL: sandy silt till
6 MORNINGTON TILL: silty clay till
5 PORT STANLEY TILL: sandy to silty till
4 TAVISTOCK TILL: clayey silt till
3 MARYHILL TILL: clay till
2 Undifferentiated Till: sandy to clayey tills
NISSOURI STAGE
1 CATFISH CREEK TILL: sandy to silty, stony till

Deposits on this sheet are mapped only where they reach 1 m or more in thickness. Thinner deposits are not shown.
Formal names of formations are set in capital letters.
The legend is common to both Conestogo and Stratford (Map 2558) map sheets, and therefore not all units and symbols may be represented on this map.
The Tavistock Till was informally called the Zorra Till in the adjoining Woodstock map area (Cowan 1975, p.27).
The stratigraphic position of the undifferentiated till within the Port Bruce Stage has not been positively identified. This unit may contain some older tills.
Cowan (1975, p.29) indicates that the unit mapped as Zorra Till in the adjoining Woodstock map sheet may contain areas of unmapped Catfish Creek Till.

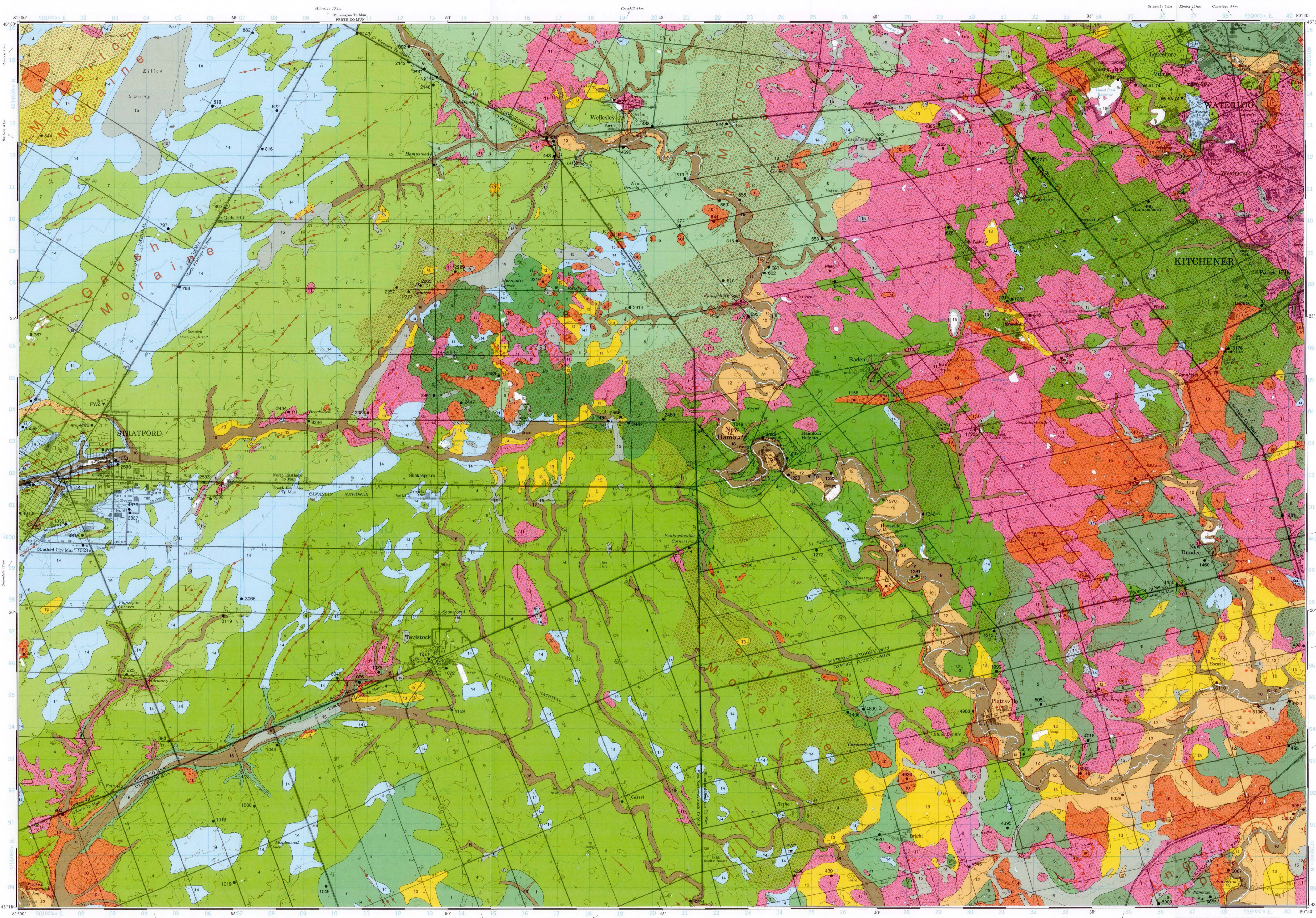
SYMBOLS

- Glacial flutings
Esker (direction known)
Hummocky topography
Ice-contact face
Stream-cut scarp
Crest of minor moraine
Sand and gravel pit
Geological boundary (approximate)
Site location
Borehole location

SOURCES OF INFORMATION

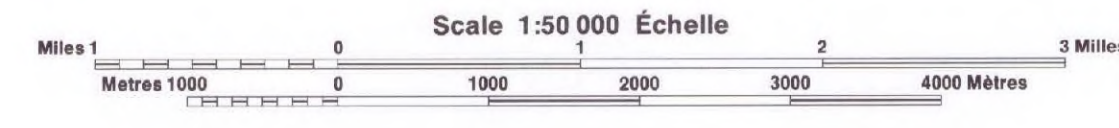
Aerial photography from National Air Photo Library, Department of Energy, Mines and Resources, Ottawa.
GSC preliminary maps 26-1970, 27-1970, 28-1970 and 29-1970, accompanying Paper 70-34.
Karrow, P.F. 1970. Quaternary Geology of the Stratford-Conestogo Area. Ontario Geological Survey of Canada, Paper 70-34, 119.
Cowan, W.R. 1975. Quaternary Geology of the Woodstock Area, Southern Ontario. Ontario Geological Survey, Report 119, 91p.
This map is based on information taken from the National Topographic System map sheet number 40 P/7 ©Her Majesty the Queen in Right of Canada with permission of Energy, Mines and Resources Canada.
Magnetic declination was approximately 8°25' W in 1990 with a rate of change of 4'30" W per year.
Geology not tied to surveyed lines.

For other conventional symbols, refer to 1:50 000 scale National Topographic System maps.
See Report 283, Quaternary Geology, Stratford-Conestogo area, Appendix D.



CREDITS

Geology by P.F. Karrow, for the Geological Survey of Canada, 1965-1968, and the Ontario Geological Survey, 1983-1990.
Edited by D.S. Tennant and T.C. Chin.
Digital cartographic production by Northwood Geoscience Ltd.
Every possible effort has been made to ensure the accuracy of the information presented on this map; however, the Ontario Ministry of Northern Development and Mines does not assume any liability for errors that may occur. Users may wish to verify critical information.
Issued 1993.
The geological information for the Conestogo and Stratford areas (Maps 2558 and 2559) was originally registered to 1979 NTS base maps. The NTS base maps were updated in 1986, and these were used in the cartographic production. Some geological units, alluvial units in particular, will appear out of alignment with streams and rivers due to this fact.
Information from this publication may be quoted if credit is given. It is recommended that reference to this map be made in the following form:
Karrow, P.F. 1993. Quaternary geology, Stratford area, Ontario Geological Survey, Map 2559, scale 1:50 000.



CONTOUR INTERVAL: 10 METRES
Contours in Metres above Mean Sea Level
North arrow: 1993
Source: Metroland Publishing