

THESE TERMS GOVERN YOUR USE OF THIS DOCUMENT

Your use of this Ontario Geological Survey document (the “Content”) is governed by the terms set out on this page (“Terms of Use”). By downloading this Content, you (the “User”) have accepted, and have agreed to be bound by, the Terms of Use.

Content: This Content is offered by the Province of Ontario’s *Ministry of Northern Development and Mines* (MNDM) as a public service, on an “as-is” basis. Recommendations and statements of opinion expressed in the Content are those of the author or authors and are not to be construed as statement of government policy. You are solely responsible for your use of the Content. You should not rely on the Content for legal advice nor as authoritative in your particular circumstances. Users should verify the accuracy and applicability of any Content before acting on it. MNDM does not guarantee, or make any warranty express or implied, that the Content is current, accurate, complete or reliable. MNDM is not responsible for any damage however caused, which results, directly or indirectly, from your use of the Content. MNDM assumes no legal liability or responsibility for the Content whatsoever.

Links to Other Web Sites: This Content may contain links, to Web sites that are not operated by MNDM. Linked Web sites may not be available in French. MNDM neither endorses nor assumes any responsibility for the safety, accuracy or availability of linked Web sites or the information contained on them. The linked Web sites, their operation and content are the responsibility of the person or entity for which they were created or maintained (the “Owner”). Both your use of a linked Web site, and your right to use or reproduce information or materials from a linked Web site, are subject to the terms of use governing that particular Web site. Any comments or inquiries regarding a linked Web site must be directed to its Owner.

Copyright: Canadian and international intellectual property laws protect the Content. Unless otherwise indicated, copyright is held by the Queen’s Printer for Ontario.

It is recommended that reference to the Content be made in the following form:

<Author’s last name>, <Initials> <year of publication>. <Content title>; Ontario Geological Survey, <Content publication series and number>, <scale>.

Use and Reproduction of Content: The Content may be used and reproduced only in accordance with applicable intellectual property laws. *Non-commercial* use of unsubstantial excerpts of the Content is permitted provided that appropriate credit is given and Crown copyright is acknowledged. Any substantial reproduction of the Content or any *commercial* use of all or part of the Content is prohibited without the prior written permission of MNDM. Substantial reproduction includes the reproduction of any illustration or figure, such as, but not limited to graphs, charts and maps. Commercial use includes commercial distribution of the Content, the reproduction of multiple copies of the Content for any purpose whether or not commercial, use of the Content in commercial publications, and the creation of value-added products using the Content.

Contact:

FOR FURTHER INFORMATION ON	PLEASE CONTACT:	BY TELEPHONE:	BY E-MAIL:
The Reproduction of the EIP or Content	MNDM Publication Services	Local: (705) 670-5691 Toll Free: 1-888-415-9845, ext. 5691 (inside Canada, United States)	Pubsales.ndm@ontario.ca
The Purchase of MNDM Publications	MNDM Publication Sales	Local: (705) 670-5691 Toll Free: 1-888-415-9845, ext. 5691 (inside Canada, United States)	Pubsales.ndm@ontario.ca
Crown Copyright	Queen’s Printer	Local: (416) 326-2678 Toll Free: 1-800-668-9938 (inside Canada, United States)	Copyright@gov.on.ca

MICHIPICOTEN AREA

Compilation Sheet

DISTRICT OF ALGOMA

Scale 1 inch to 2 miles

N.T.S. Reference 42 C, 42 N

LIST OF MINES AND MINERAL OCCURRENCES

PRODUCERS

24	Algoma Steel Corp. Ltd., The - Algoma Ore Properties Div.	Fe
25	MacLeod, Helen, Victoria, Alexander mines (R.24,Twp.29)	Fe
25	Sir James mine (R.24,Twp.29)	Fe
46	"C" property (R.26,Twp.27)	Fe,S

Past Producers

1	Darwin (Grace) (R.23,Twp.29)	Au
2	Minto (R.23,Twp.29)	Au
3	Jubilee (R.23,Twp.29)	Au
4	Norwalk (R.22,Twp.29)	Au
5	Centennial (Kitchigami) (R.22,Twp.29)	Au
18	Parkhill (R.23,Twp.29)	Au
56	Smith, S.B. (R.23,Twp.29)	Au
57	Deep Lake (R.23,Twp.29)	Au
58	Amherst (Goudreau Gold, Algold) (R.26,Twp.28)	Au
59	Magino (Algoma Summit,McCarthy-Webb) (R.27,Twp.49)	Au
60	Cline (R.27,Twp.48)	Au
43	Algoma Steel Corp. Ltd., The - Algoma Ore Properties Div.	Fe,S
43	Rand No.1 (R.26,Twp.27)	Fe,S
44	Bear (R.26,Twp.27)	Fe,S
45	"A" property (R.26,Twp.27)	Fe,S
27	Magpie mine (R.26,Twp.29)	Fe
20	Michipicoten Iron Mines Ltd. (Josephine) (R.25,Twp.28)	Fe

MINERAL OCCURRENCES

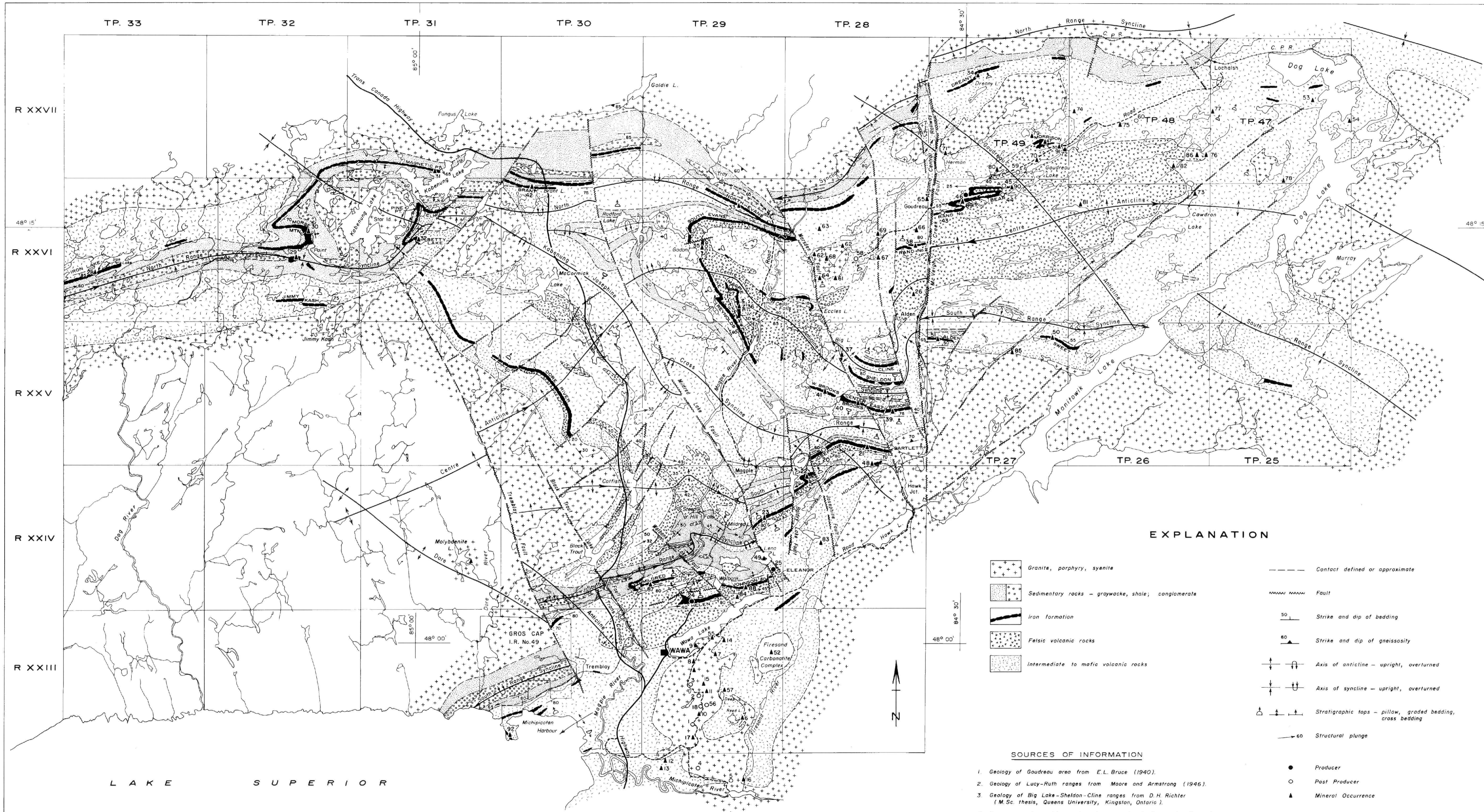
6	Golden Reed (R.23,Twp.29)	Au
7	Cooper (R.23,Twp.29)	Au
8	Hornblende (R.23,Twp.29)	Au
9	Mackey Point (R.23,Twp.29)	Au
10	Mariposa (R.23,Twp.29)	Au
11	Sunrise (R.23,Twp.29)	Au
12	Steenbaugh (R.22,Twp.30)	Au
13	Willis (R.22,Twp.30)	Au
14	Stanley (Smith) (R.23,Twp.29)	Au
15	Shier (R.23,Twp.29)	Au
16	Valenti (R.22,Twp.29)	Au
17	War Eagle (R.23,Twp.29)	Au
55	Wawa Gold Fields (R.23,Twp.29)	Au
61	Farquhar (R.26,Twp.28)	Au
62	Ego (Barnes) (R.26,Twp.28)	Au,Cu
63	Paquette (R.26,Twp.28)	Au
64	Porter Fremier (R.26,Twp.28)	Au
65	McMahon (R.26,Twp.28)	Au
66	Brandt (R.26,Twp.28)	Au
67	Doherty Lake (R.26,Twp.28)	Au
68	Gutcher (R.26,Twp.28)	Au
69	Banville-Page (R.26,Twp.28)	Au
70	Morrison (Cabin) (Twp.49)	Au
71	Herman Lake (Twp.49)	Au
72	Bearpaw Portage (Twp.49)	Au
73	Jackfish Lake (R.26,Twp.26)	Au
74	Michael Syndicate (Twp.48)	Au
75	Edwards (Twp.48)	Au
76	Boundary Lake (Twp.48)	Au
77	Michael - Webb (Twp.47)	Au
79	Kremzar (Twp.49)	Au
80	Lovell Lake (Twp.49)	Au
81	Unnamed (R.26,Twp.26)	Au
82	Reid (Twp.48)	Au
53	Camex (Twp.47)	Au
54	Bankfield (Twp.47)	Au
51	Alden range (R.25,Twp.27)	Fe,S
50	Hamilton (Sweet) range (R.25,Twp.27)	Fe,S
49	Lena Lake (R.24,Twp.29)	asb
48	Holdsworth (R.25,Twp.28)	Fe,S
42	Seven Island Mining and Exploration Corp. Ltd. (Brant) (R.26,Twp.30)	Fe
41	West Brooks range (R.25,Twp.28)	Fe
40	Centre Brooks range (R.25,Twp.28)	Fe
39	East Brooks range (R.25,Twp.28)	Fe
38	Rand No.2 (R.26,Twp.28)	Fe
37	Big Lake (R.25,Twp.28)	Fe
36	Alice range (R.26,Twp.29)	Fe
35	Godan Lake (R.26,Twp.29)	Fe
34	Drotsky range (R.27,Twp.27)	Fe
31	Magnetic Point range (R.27,Twp.31)	Fe
30	Morse Mountain range (R.26,Twp.32)	Fe
29	Frances mine (R.26,Twp.32)	Fe
28	Algoma Steel Corp. Ltd., The - Algoma Ore Properties Div.	Fe
28	Iron Lake range (R.26,Twp.33)	Fe
25	Betty Lake range (R.26,Twp.33)	Fe
33	Evans (R.26,Twp.29)	Fe,S
47	Morrison No.1 (R.27,Twp.27)	Fe
21	Bartlett (Britannia) (R.25,Twp.28)	Fe
88	Johnson (R.24,Twp.29)	Fe
89	"D", "E", "F" Properties (R.26,Twp.27)	Fe
90	Morrison No.2 (R.26,Twp.27)	Fe
91	Bearpaw (Twp.49)	Fe
92	Michipicoten Harbour Mining Location (R.23,Twp.30)	Fe
78	Emily (Twp.47)	Au
52	Firesand (R.23,Twp.29)	Nb
22	Michipicoten Holdings Ltd.	
22	Ruth (R.24,Twp.28)	Fe
23	Lucy (R.24,Twp.29)	Fe
26	Adonis (Kozak) (R.26,Twp.28)	Ag,Cu,Au
83	New Kelore (R.24,Twp.28)	Ni,Cu
84	Mammoth Metals (R.24,Twp.29)	Pb,Zn
85	Michael Boyle (Missinaibi Gold Shore, Towagnac) (R.24,Twp.27)	Au
86	Archer - Crawford (Twp.48)	Au
87	Mildred (Goetz) (R.24,Twp.29)	Fe

EXPLANATION

	Granites, porphyry, syenite		Contact defined or approximate
	Sedimentary rocks - graywacke, shale, conglomerate		Fault
	Iron formation		Strike and dip of bedding
	Felsic volcanic rocks		Strike and dip of gneissosity
	Intermediate to mafic volcanic rocks		Axis of anticline - upright, overturned
			Axis of syncline - upright, overturned
			Stratigraphic tops - pillow, graded bedding, cross bedding
			Structural plunge

SOURCES OF INFORMATION

1. Geology of Goudreau area from E.L. Bruce (1940).
2. Geology of Lucy-Ruth ranges from Moore and Armstrong (1946).
3. Geology of Big Lake-Sheldon-Cline ranges from D.H. Richter (M.Sc. thesis, Queen's University, Kingston, Ontario).
4. Base map and remaining geology from records of Algoma Ore Properties.
5. Geological map originally published in Bulletin Geol. Soc. America, Vol. 73, 1962, Plate 1 facing p.561.
6. Geology and mineral occurrences compiled by A.M. Goodwin, 1963.



LAKE SUPERIOR