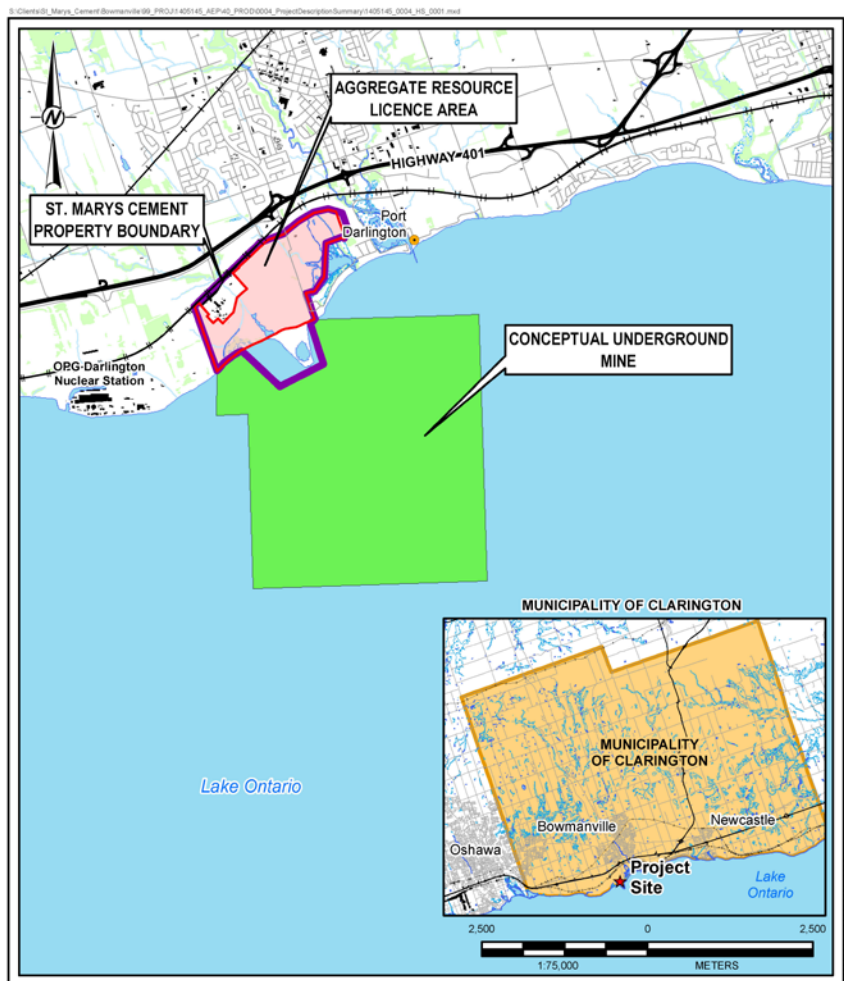

Statement of Cancelled or Withdrawn Class EA Project

Class Environmental Assessment for Activities of the Ministry of Energy, Northern Development and Mines under the Mining Act

RE: **St. Marys Cement Bowmanville Underground Expansion Project**

CBM Aggregates, a division of St. Marys Cement, has withdrawn its application for a mining lease and the associated Class Environmental Assessment. The company was exploring the feasibility and potential benefits of an underground mine adjacent to the Bowmanville Quarry (see map). The objective of the program was to determine if this approach would provide a viable means to address the need for aggregate material (specifically high quality crushed stone) in support of construction activity in the growing Eastern Greater Toronto Area market.

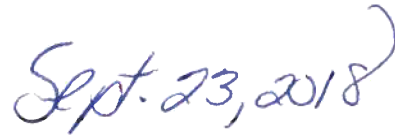
Proposed Project Area



As of August 15, 2018, the company has made the decision to not move forward with the program after reviewing the results of further rock quality testing, specifically completed for the purpose of determining the suitability of using this aggregate in high-

strength concrete. As a result, and the project has been put on indefinite hold by CBM/SMC at this time. Subsequently, the Ministry of Energy, Northern Development and Mines will not be processing the application for a mining lease and the associated Category C Class Environmental Assessment will be discontinued. Prior to withdrawal of the application, the Ministry issued a Notice of Opportunity to Provide Input from December 12, 2016 to January 12, 2017. A Notice of Completion has not been issued. Should future evaluation of the rock quality support a reapplication to the ministry, it will be assessed as a new undertaking under the Ministry's Class Environmental Assessment.

Approved by:



Michelle Watkins
Senior Manager, Mining Lands
Mineral Development & Lands Branch
Ministry of Energy, Northern Development & Mines
Willet Green Miller Ctr., Level B3
933 Ramsey Lake Road
Sudbury, ON P3E 6B5

Date:

Copies to:

- Project file
- Class EA web page
- Environmental Planner, Mineral Development and Lands Branch, ENDM
- Regional Director, Regional Office, MECP
- Air, Pesticides and Environmental Planning Supervisor, Regional Office, MECP
- Director, Environmental Assessment and Permissions Branch, MECP
- Designated MECP regional office email address