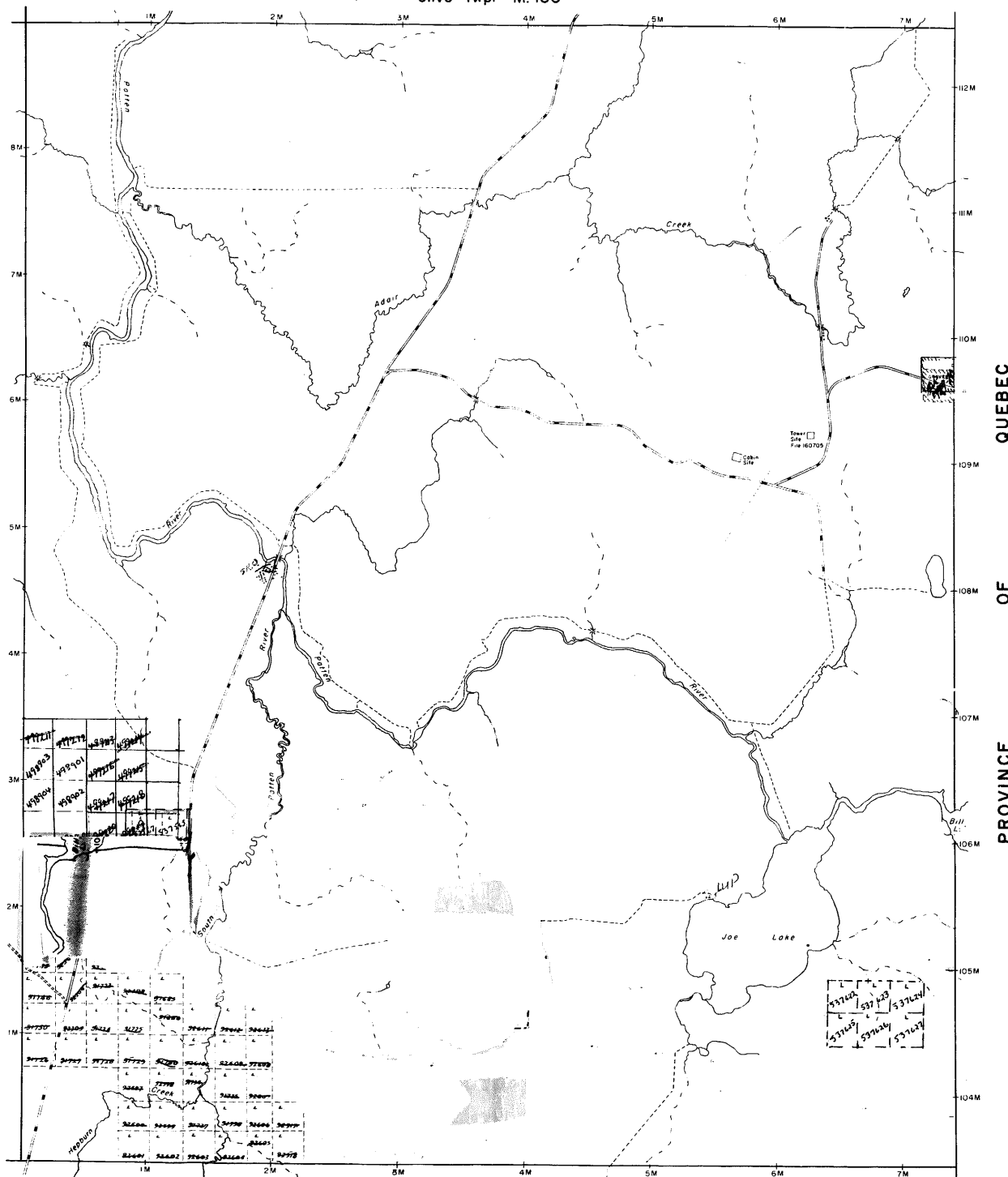


Terms of Use: NOTICE: This is a dated, archived document that does not represent current mining claim activity in Ontario. This archived document is provided for information purposes only and MNDM and the Government of Ontario accept no liability and make no warranty or any representation regarding the use, accuracy, applicability, completeness, performance, availability, security or reliability of the information. *This archive "Historical Claim Map" does not meet provincial accessibility standards. If you need accessible formats, communication support or would like information about this map please contact the Provincial Recording Office @ 1-888-415-9845 Ext 5784. For current mining claim status, please use the MNDM online claim maps website at: <http://www.mndm.gov.on.ca/en/mines-and-minerals/applications/claimaps>

Clive Twp. - M.450

Abbotsford Twp. - M.400



Hepburn Twp. - M.500

THE TOWNSHIP
OF

ADAIR

DISTRICT OF
COCHRANE

LARDER LAKE
MINING DIVISION

SCALE: 1-INCH 40 CHAINS

LEGEND

PATENTED LAND	⊙
CROWN LAND SALE	C.S.
LEASES	⊙
LOCATED LAND	Loc.
LICENSE OF OCCUPATION	L.O.
MINING RIGHTS ONLY	M.R.O.
SURFACE RIGHTS ONLY	S.R.O.
ROADS	—
IMPROVED ROADS	—
KING'S HIGHWAYS	—
RAILWAYS	—
POWER LINES	—
MARSH OR MUSKEG	—
MINES	—
CANCELLED	—

NOTES

400' Surface Rights Reservation around
all lakes and rivers.



*Revised by [unclear]
Feb 7/80*

PLAN NO. - M.401

DEPARTMENT OF MINES
- ONTARIO -

ADAIR

DISTRICT OF
COCHRANE

LARDER LAKE
MINING DIVISION

SCALE: 1-INCH = 40 CHAINS

LEGEND

PATENTED LAND	⊙
CROWN LAND SALE	C.R.
LEASES	⊖
LOCATED LAND	Loc.
LICENSE OF OCCUPATION	L.O.
MINING RIGHTS ONLY	M.R.O.
SURFACE RIGHTS ONLY	S.R.O.
ROADS	—
IMPROVED ROADS	—
KING'S HIGHWAYS	—
RAILWAYS	—
POWER LINES	—
MARSH OR MUSKES	—
MINES	—
CANCELLED	—

NOTES

400' Surface Rights Reservation around
all lakes and rivers.

Areas withdrawn from staking under Section
49 of the Mining Act (R.S.O. 1970).

Stake No.	File	Date	Disposition
100-1077	10000	2/11/72	L.O.

Revised: 100 74191 March 22/91

THE INFORMATION THAT
APPEARS ON THIS MAP
HAS BEEN COMPILED
FROM VARIOUS SOURCES,
AND ACCURACY IS NOT
GUARANTEED. THOSE
WISHING TO STAKE
MINING CLAIMS SHOULD
CONSULT WITH THE MINING
RECORDS, MINISTRY OF
NORTHERN DEVELOP-
MENT AND MINES FOR AD-
DITIONAL INFORMATION
ON THE STATUS OF THE
LANDS SHOWN HEREON.

DRAFTED BY T.O.
CHECKED BY M.W.
CIRCULATED JULY 20/1989
ARCHIVED MARCH 21/1997

PLAN NO.- **M.401**

ONTARIO **#2**
MINISTRY OF NATURAL RESOURCES
SURVEYS AND MAPPING BRANCH

Clive Twp. - M.450

Abbotsford Twp. - M.400

QUEBEC
OF
PROVINCE

Hepburn Twp. - M.500

MINING RECORDER
RECEIVED
MAY 22 1930
SWASTIKA - ONT.

ADAIR

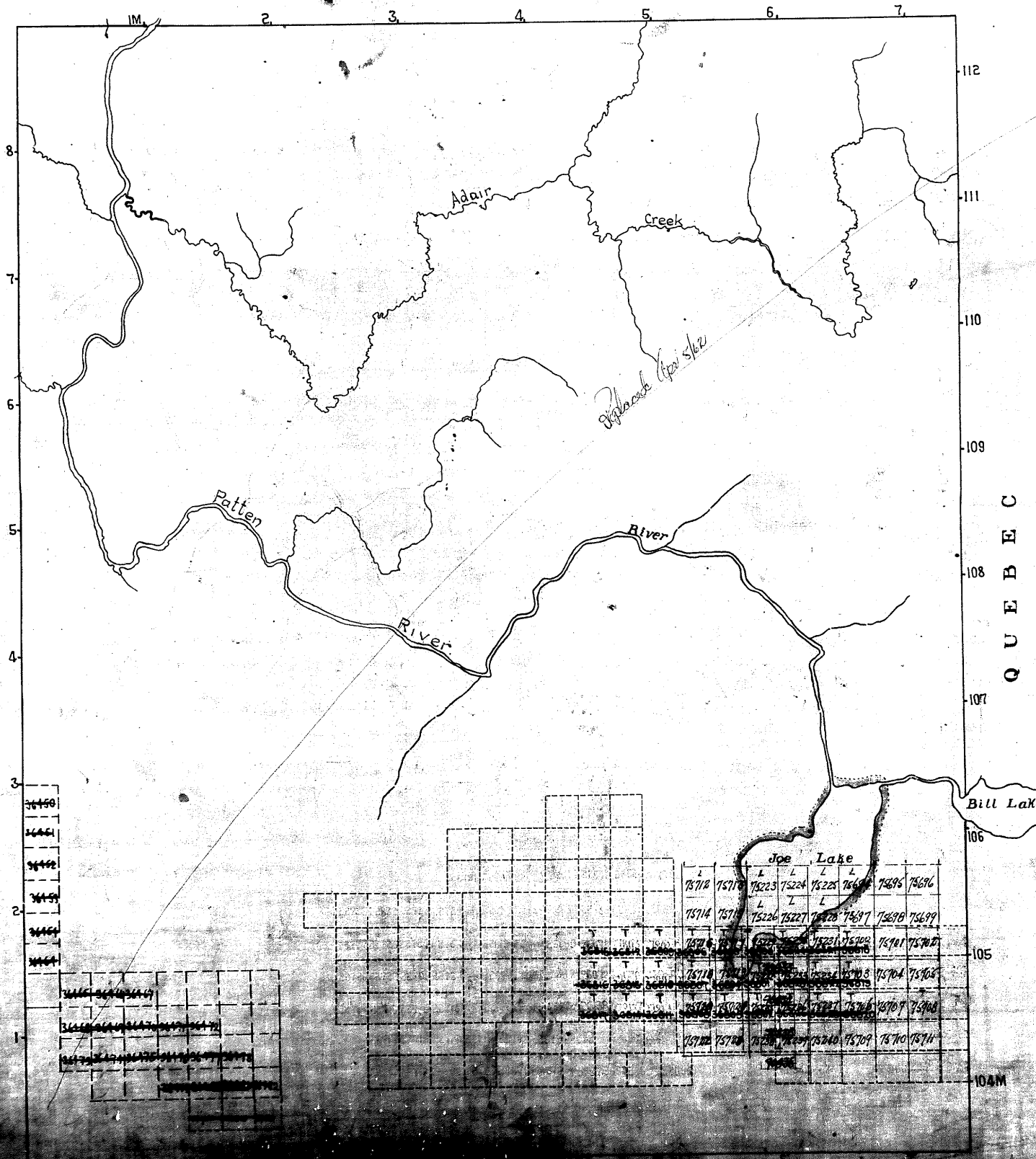
M-401

DISTRICT OF COCHRANE
LARDER LAKE MINING DIVISION

Scale 40 Chains = 1 Inch

ABBOTSFORD

QUEBEC



ADAIR

M-401

DISTRICT OF COCHRANE
LARDER LAKE MINING DIVISION

Scale 40 Chains = 1 Inch

MINING RECORDER
RECEIVED
APR 5 1962
KIMIKLAND LAKE - ONT.

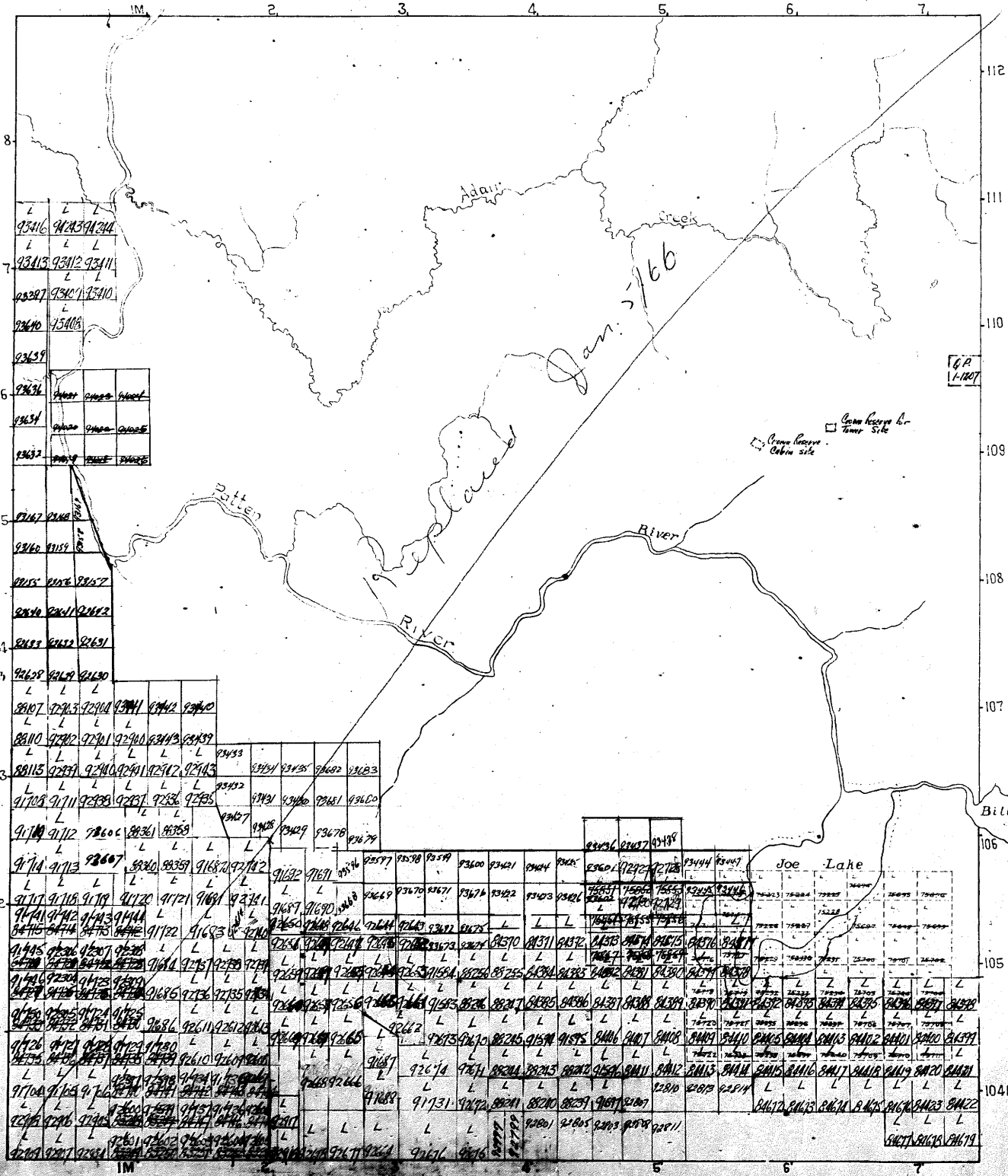
LEGEND

- CANCELLED
- PATENTED LAND
- CROWN LAND SALE
- LEASES
- LOCATED LAND
- LICENSE OF OCCUPATION
- MINING RIGHTS ONLY
- SURFACE RIGHTS ONLY

- CS
- CO
- LOC
- LO
- MRO
- SRO

ABBOTSFORD

QUEBEC

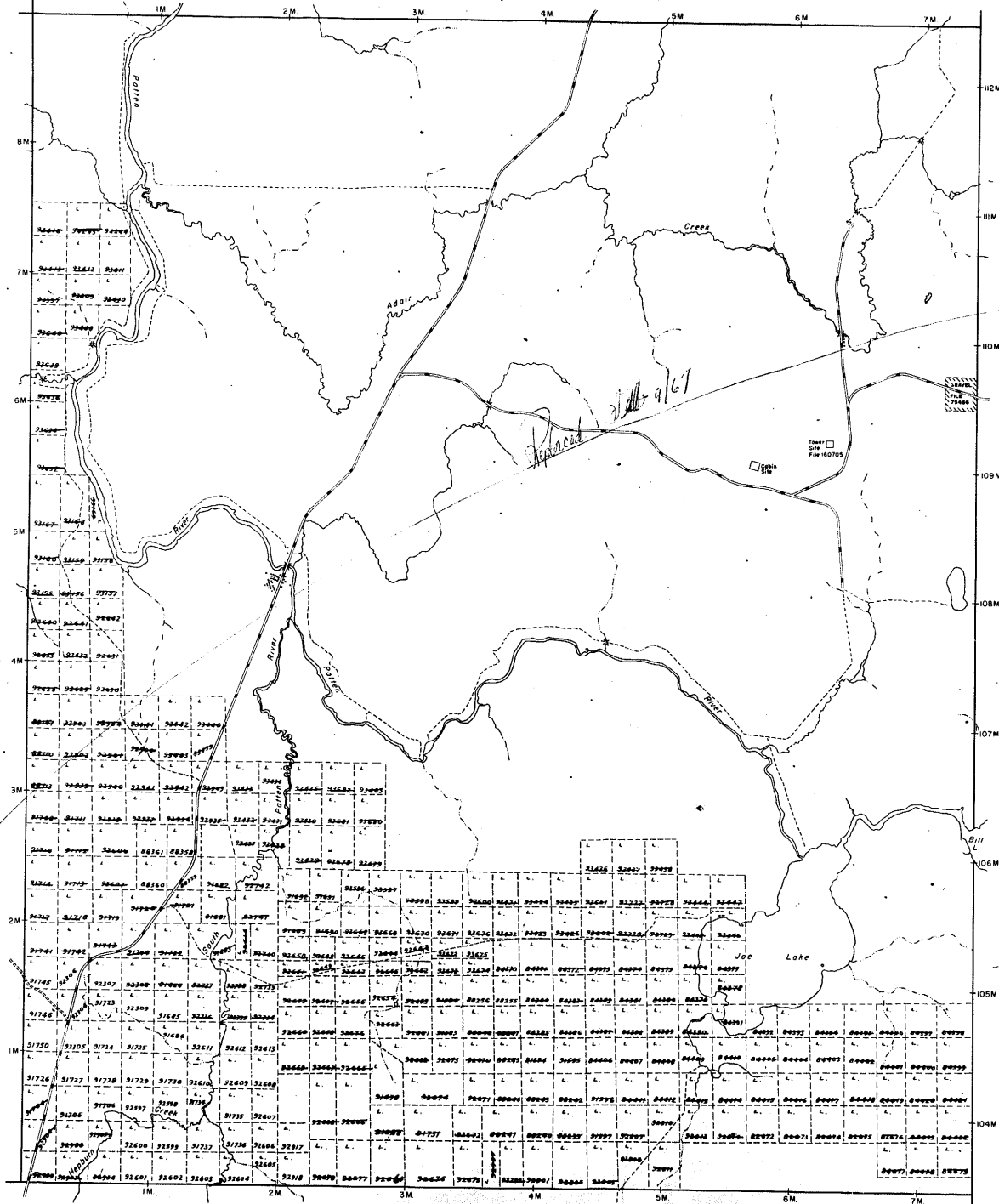


All surface rights reservation around all lakes and rivers.

Clive Twp. - M.450

Abbotsford Twp. - M.400

Hepburn Twp. - M.500



THE TOWNSHIP OF

ADAIR

DISTRICT OF COCHRANE

LARDER LAKE MINING DIVISION

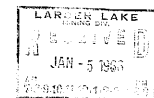
SCALE: 1-INCH = 40 CHAINS

LEGEND

PATENTED LAND	⊙	C.S.
CROWN LAND SALE	⊙	C.S.
LEASES	⊙	L.O.
LOCATED LAND	⊙	L.O.
LICENSE OF OCCUPATION	⊙	L.O.
MINING RIGHTS ONLY	⊙	M.R.O.
SURFACE RIGHTS ONLY	⊙	S.R.O.
ROADS	—	
IMPROVED ROADS	—	
KING'S HIGHWAYS	—	
RAILWAYS	—	
POWER LINES	—	
MARSH OR MUSKEG	—	
MINES	—	
CANCELLED	—	

NOTES

400' Surface Rights Reservation around all lakes and rivers



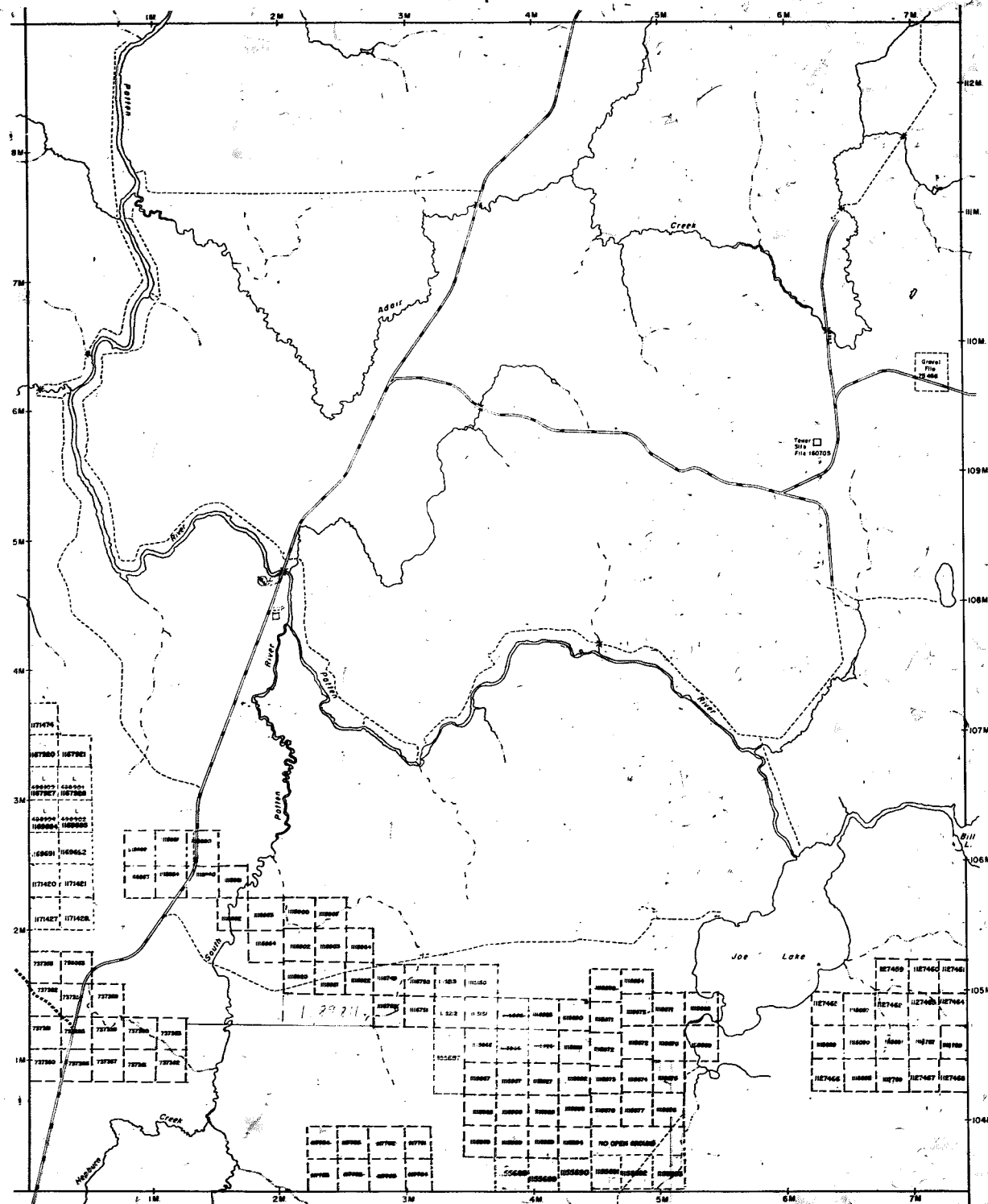
PLAN NO. - M.401

DEPARTMENT OF MINES

- ONTARIO -

Clive Twp. - M.450

Abbotsford Twp. - M.400

REMOVED FROM CIRCULATION
AND ARCHIVED ON JULY 2/92

Hepburn Twp. - M.500

THE TOWNSHIP
OF

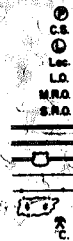
ADAIR

DISTRICT OF
GOCHRANELARDER LAKE
MINING DIVISION

SCALE: 1-INCH = 40 CHAINS

LEGEND

PATENTED LAND
CROWN LAND SALE
LEASES
LOCATED LAND
LICENSE OF OCCUPATION
MINING RIGHTS ONLY
SURFACE RIGHTS ONLY
ROADS
IMPROVED ROADS
KING'S HIGHWAYS
RAILWAYS
POWER LINES
MARSH OR MUSKES
MINES
CANCELLED



NOTES

400' Surface Rights Reservation around
all lakes and rivers.

Areas withdrawn from staking under Section
46 of the Mining Act (R.S.O. 1970).
Over No. File Date Disposition
18777-18778 1980 JULY 22 C.A.
Number 187700-187701

THE INFORMATION THAT
APPEARS ON THIS MAP
HAS BEEN COMPILED
FROM VARIOUS SOURCES
AND ACCURACY IS NOT
GUARANTEED. THOSE
WISHING TO STAKE MIN-
ING CLAIMS SHOULD CON-
SULT WITH THE MINING
RECORDS DIVISION OF
NORTHERN DEVELOP-
MENT AND MINES FOR AD-
DITIONAL INFORMATION
ON THE STATUS OF THE
LANDS SHOWN HEREON.

DRAFTED BY T.O.
CHECKED BY M.V.
CIRCULATED JULY 20/80

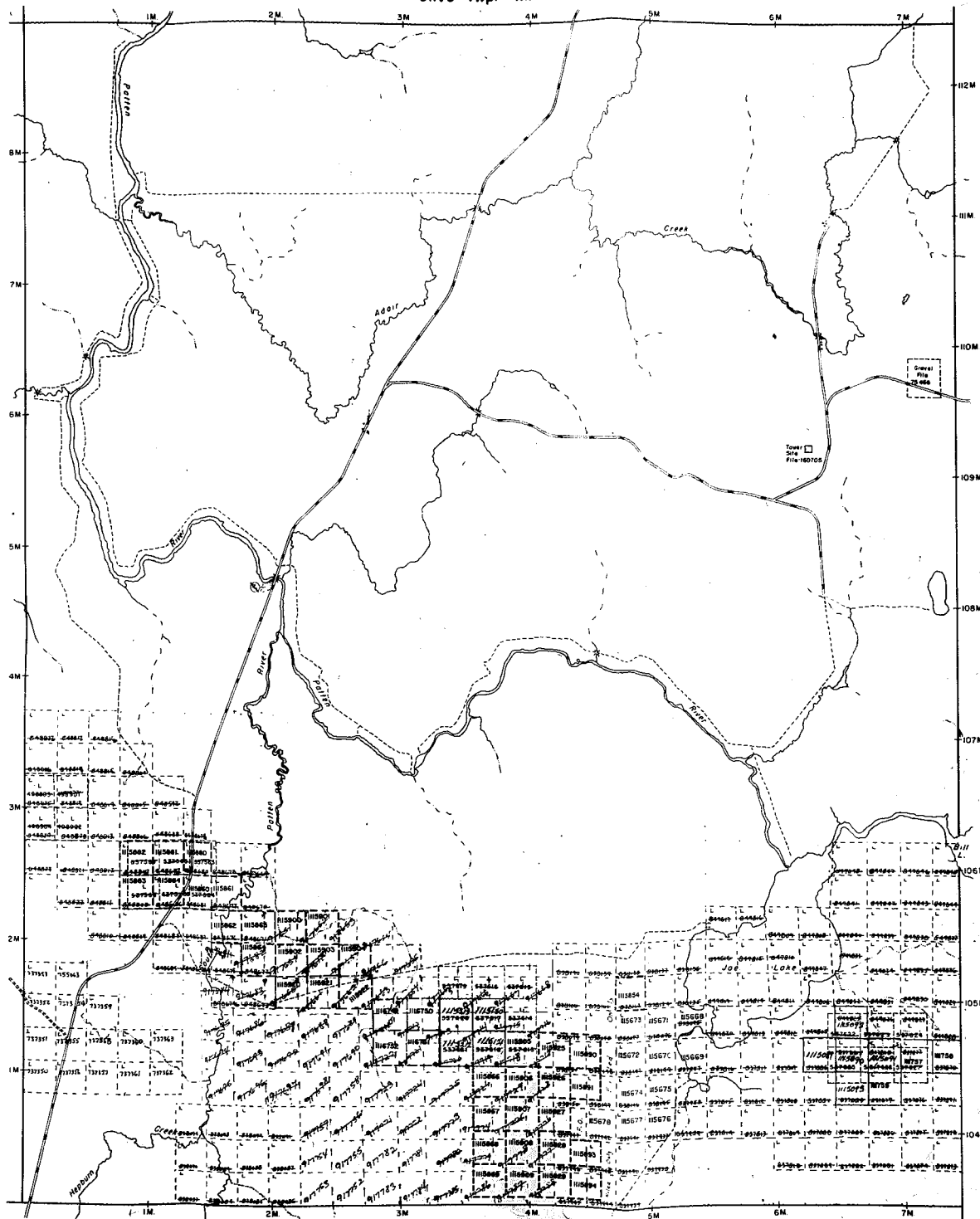
PLAN NO. M 401

ONTARIO #2
MINISTRY OF NATURAL RESOURCES
SURVEYS AND MAPPING BRANCH

Clive Twp. - M.450

Abbotsford Twp. - M.400

Hepburn Twp. - M.500



THE TOWNSHIP
OF

ADAIR

DISTRICT OF
GOCHRANE

**LARDER LAKE
MINING DIVISION**

SCALE: 1-INCH = 40 CHAINS

LEGEND

PATENTED LAND
CROWN LAND SALE
LEASES
LOCATED LAND
LICENSE OF OCCUPATION
MINING RIGHTS ONLY
SURFACE RIGHTS ONLY
ROADS
IMPROVED ROADS
KING'S HIGHWAYS
RAILWAYS
POWER LINES
MARSH OR MUSKES
MINES
CANCELLED



NOTES

400' Surface Rights Reservation around
all lakes and rivers.

Areas withdrawn from staking under Section
45 of the Mining Act (R.S.O. 1970).

Order No.	File	Date	Disposition
102-0275	1088	2/27/75	2-0
Cancelled	102 1088	Feb. 2, 1975	2-0

REPLACED JULY 20, 1989

PLAN NO. **M.401**

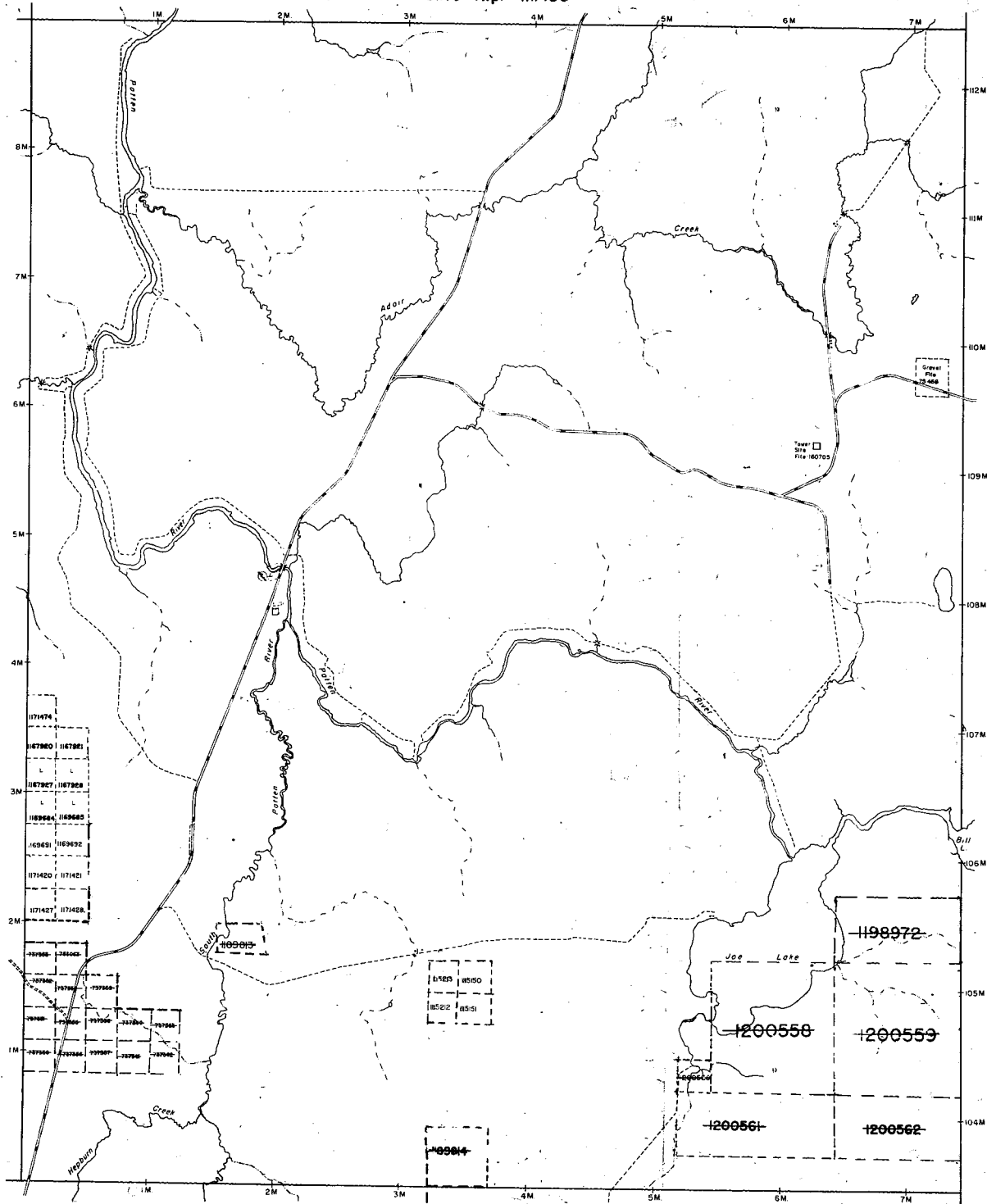
ONTARIO #2

MINISTRY OF NATURAL RESOURCES
SURVEYS AND MAPPING BRANCH

Clive Twp. - M.450

Abbotsford Twp. - M.400

Hepburn Twp. - M.500



THE TOWNSHIP
OF

ADAIR

DISTRICT OF
GOCHRAINE

LARDER LAKE
MINING DIVISION

SCALE: 1-INCH = 40 CHAINS

LEGEND

PATENTED LAND	⊙
CROWN LAND SALE	C.S.
LEASES	⊖
LOCATED LAND	Loc.
LICENSE OF OCCUPATION	L.O.
MINING RIGHTS ONLY	M.R.O.
SURFACE RIGHTS ONLY	S.R.O.
ROADS	—
IMPROVED ROADS	—
KING'S HIGHWAYS	—
RAILWAYS	—
POWER LINES	—
MARSH OR MUSKES	—
MINES	—
CANCELLED	—

NOTES

400' Surface Rights Reservation around
all lakes and rivers.

Areas withdrawn from staking under Section
43 of the Mining Act (R.S.O. 1970).

Order No.	File	Date	Disposition
10799	10300	2/11/72	S.R.O.
10800	10301	2/11/72	S.R.O.

THE INFORMATION THAT
APPEARS ON THIS MAP
HAS BEEN COMPILED
FROM VARIOUS SOURCES
AND ACCURACY IS NOT
GUARANTEED. THOSE
WISHING TO STAKE
MINING CLAIMS SHOULD
CONSULT WITH THE
MINING RECORDER,
MINISTRY OF
NORTHERN DEVELOPMENT
AND MINES, FOR
ADDITIONAL INFORMATION
ON THE STATUS OF THE
LANDS SHOWN HEREON.

DRAFTED BY T.O.
CHECKED BY M.W.
CIRCULATED JULY 20/1989
ARCHIVED MARCH 21/197

PLAN NO. M.401

ONTARIO
MINISTRY OF NATURAL RESOURCES
SURVEYS AND MAPPING BRANCH

ADAIR

DISTRICT OF
GOCHRANELARDER LAKE
MINING DIVISION

SCALE: 1-INCH = 40 CHAINS

LEGEND

PATENTED LAND
CROWN LAND SALE
LEASES
LOCATED LAND
LICENSE OF OCCUPATION
MINING RIGHTS ONLY
SURFACE RIGHTS ONLY
ROADS
IMPROVED ROADS
KING'S HIGHWAYS
RAILWAYS
POWER LINES
MARSH OR MUSKEG
MINES
CANCELLED



NOTES

400' Surface Rights Reservation around
all lakes and rivers.

Areas withdrawn from staking under Section
45 of the Mining Act (R.S.O. 1970)

Order No.	File	Date	Disposition
10799	10840	3/11/72	S.R.O.
Headed 10774-74	10840	10/10/74	10840

THE INFORMATION THAT
APPEARS ON THIS MAP
HAS BEEN COMPILED
FROM VARIOUS SOURCES
AND ACCURACY IS NOT
GUARANTEED. THOSE
WISHING TO STAKE MIN-
ING CLAIMS SHOULD CON-
SULT WITH THE MINING
RECORDS DIVISION OF
NORTHERN DEVELOP-
MENT AND MINES FOR AD-
DITIONAL INFORMATION
ON THE STATUS OF THE
LANDS SHOWN HEREON.

DRAFTED BY T.O.
CHECKED BY M.W.
CIRCULATED JULY 20/1989
ARCHIVED MARCH 21/1997

PLAN NO. - M.401

ONTARIO
MINISTRY OF NATURAL RESOURCES
SURVEYS AND MAPPING BRANCH

Abbotsford Twp. - M.400

QUEBEC
OF
PROVINCE

Hepburn Twp. - M.500