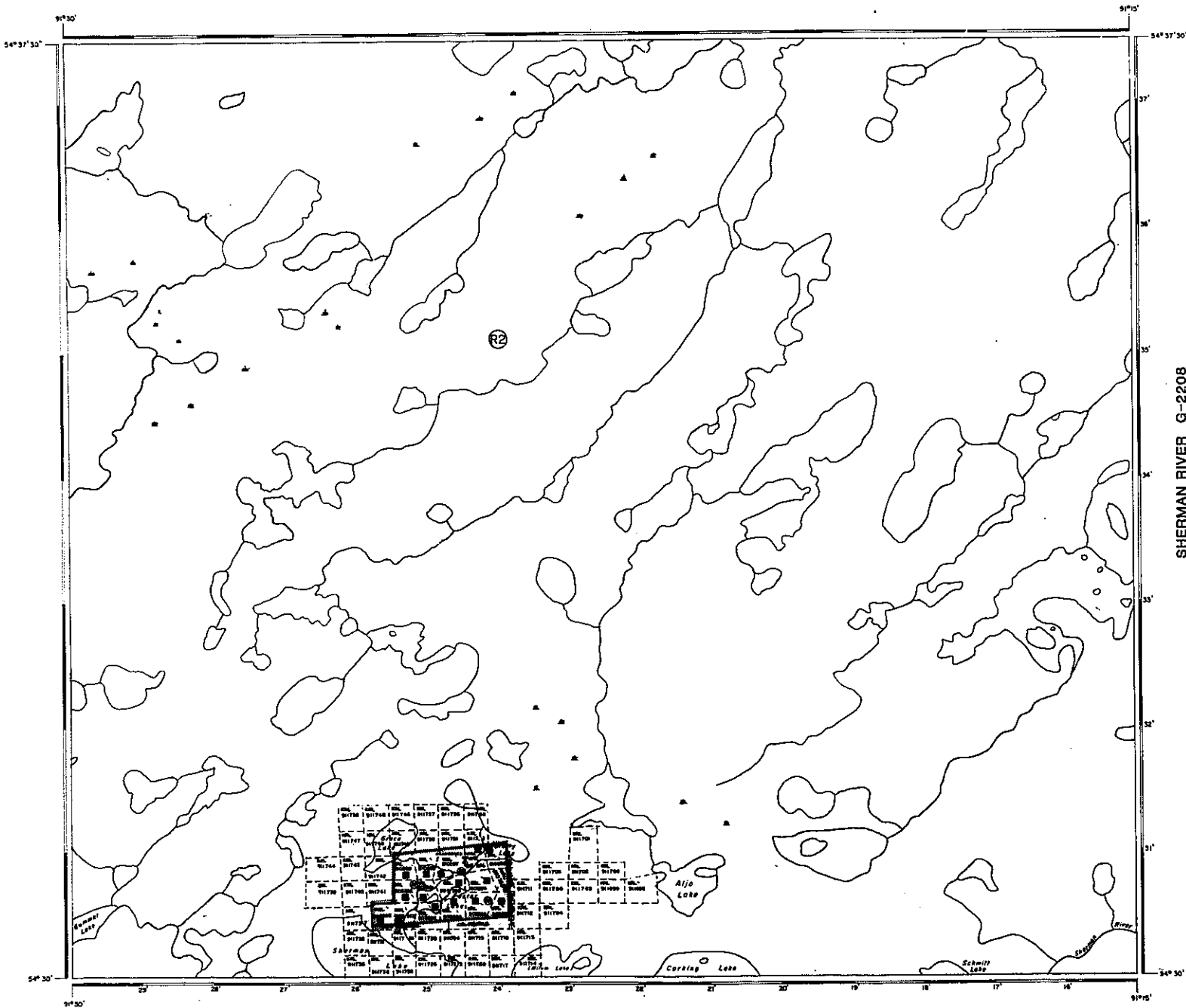


THORNE LAKE AREA G-2234



LEVITT LAKE AREA G-2103

REFERENCES

AREAS WITHDRAWN FROM DISPOSITION

M.R.O. - MINING RIGHTS ONLY
 S.R.O. - SURFACE RIGHTS ONLY
 M. & S. - MINING AND SURFACE RIGHTS

Description	District No.	Date	Dissemination	File
①	W-228, 27-27 W-2	DEC. 10, 1977	128110	
②	FEDERAL APP. FOR EXPLOITATION LICENSES OF MINERAL AND SURFACE RIGHTS			

① W-228 W-228, 27-27 W-2 DEC. 10, 1977 128110

② FEDERAL APP. FOR EXPLOITATION LICENSES OF MINERAL AND SURFACE RIGHTS

LEGEND

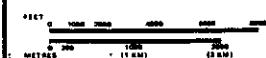
HIGHWAY AND ROUTE No.	
OTHER ROADS	
TRAILS	
SURVEYED LINES	
TOWNSHIP, BASE LINES, ETC.	
LOTS, MINING CLAIMS, PARCELS, ETC.	
UNSURVEYED LINES	
LOT LINES	
PARCEL BOUNDARY	
MINING CLAIMS ETC.	
RAILWAY AND RIGHT OF WAY	
UTILITY LINES	
NON-PERENNIAL STREAM	
FLOODING OR FLOODING RIGHTS	
SUBDIVISION OR COMPOSITE PLAN	
RESERVATIONS	
ORIGINAL SHORELINE	
MARSH OR MUSKEG	
MINES	
TRAVERSE MONUMENT	

DISPOSITION OF CROWN LANDS

TYPE OF DOCUMENT	SYMBOL
PATENT, SURFACE & MINING RIGHTS	
- SURFACE RIGHTS ONLY	
- MINING RIGHTS ONLY	
LEASE, SURFACE & MINING RIGHTS	
- SURFACE RIGHTS ONLY	
- MINING RIGHTS ONLY	
LICENCE OF OCCUPATION	
ORDER-IN-COUNCIL	
RESERVATION	
CANCELLED	
SAND & GRAVEL	

NOTE: MINING RIGHTS IN PARCELS PATENTED PRIOR TO MAY 4, 1914, VESTED IN ORIGINAL PATENTEES BY THE PUBLIC LANDS ACT, R.S.O. 1914, CHAP. 186, SEC. 43, SUBSEC. 1.

SCALE: 1 INCH = 40 CHAINS

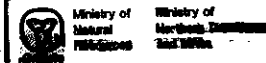


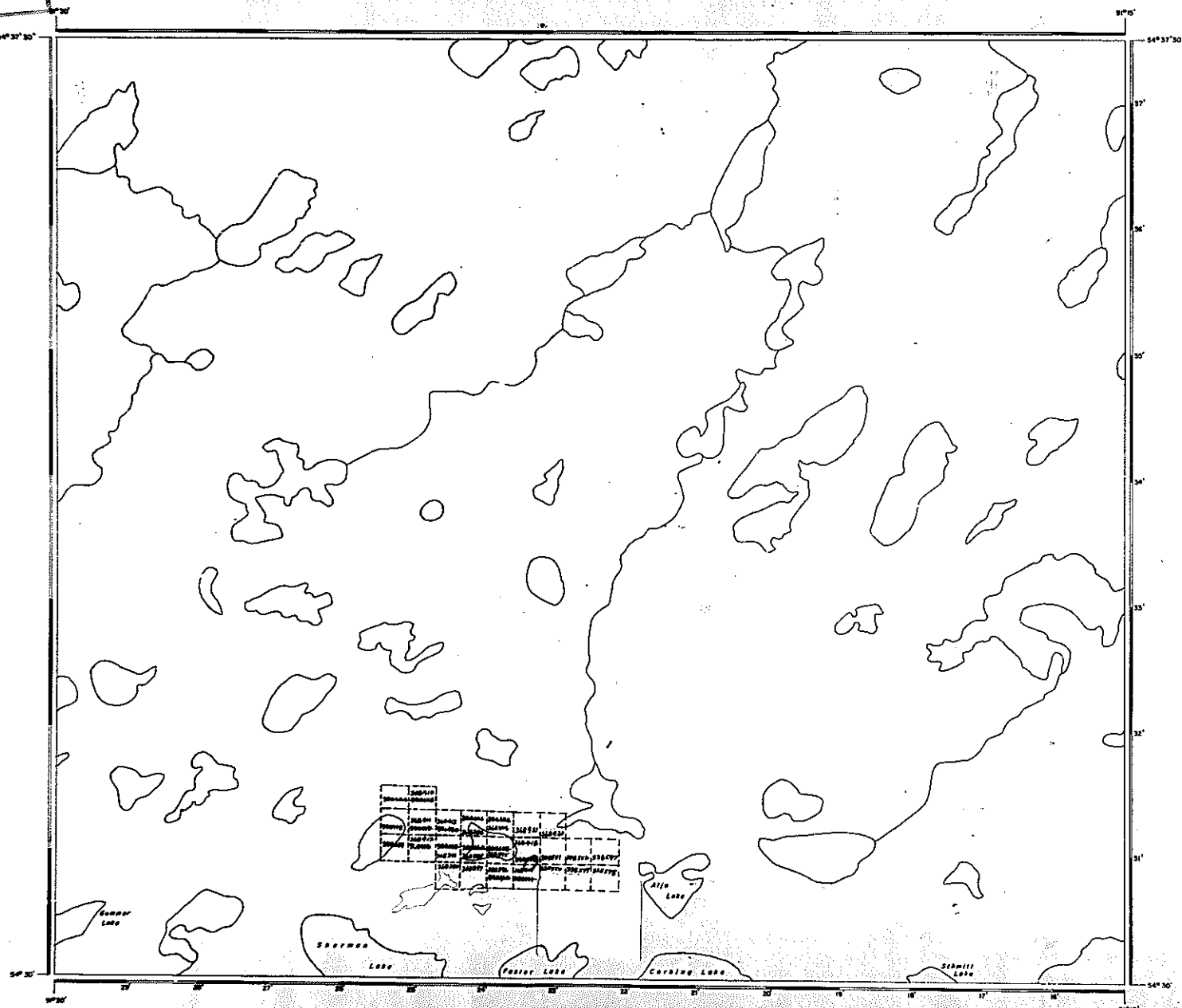
AREA

ALJO LAKE

M.B.A. ADMINISTRATIVE DISTRICT
 SIOUX LOOKOUT
 MINING DIVISION
 RED LAKE

LAND TITLES / REGISTRY DIVISION
 KENORA - PATRICIA PORTNOR





LEVITT LAKE AREA M-3324

AREA OF

ALJO LAKE

**DISTRICT OF
KENORA
PATRICIA PORTION**

**RED LAKE
MINING DIVISION**

SCALE: 1-INCH = 40 CHAINS

LEGEND

PATENTED LAND	⊗
PATENTED FOR SURFACE RIGHTS ONLY	⊙
LEASES	○
LICENSE OF OCCUPATION	○
CROFTY LAND SALE	L.D.
LOCATED LAND	C.A.
CANCELLED	L.C.
MINING RIGHTS ONLY	M.R.O.
SURFACE RIGHTS ONLY	S.R.O.
HIGHWAY & ROUTE No.	—
ROADS	—
TRAILS	—
RAILWAYS	—
POKER LEVES	—
MARSH OR MUSKEG	—
MINES	*

*used only with summer resort locations or when space is limited

NOTES

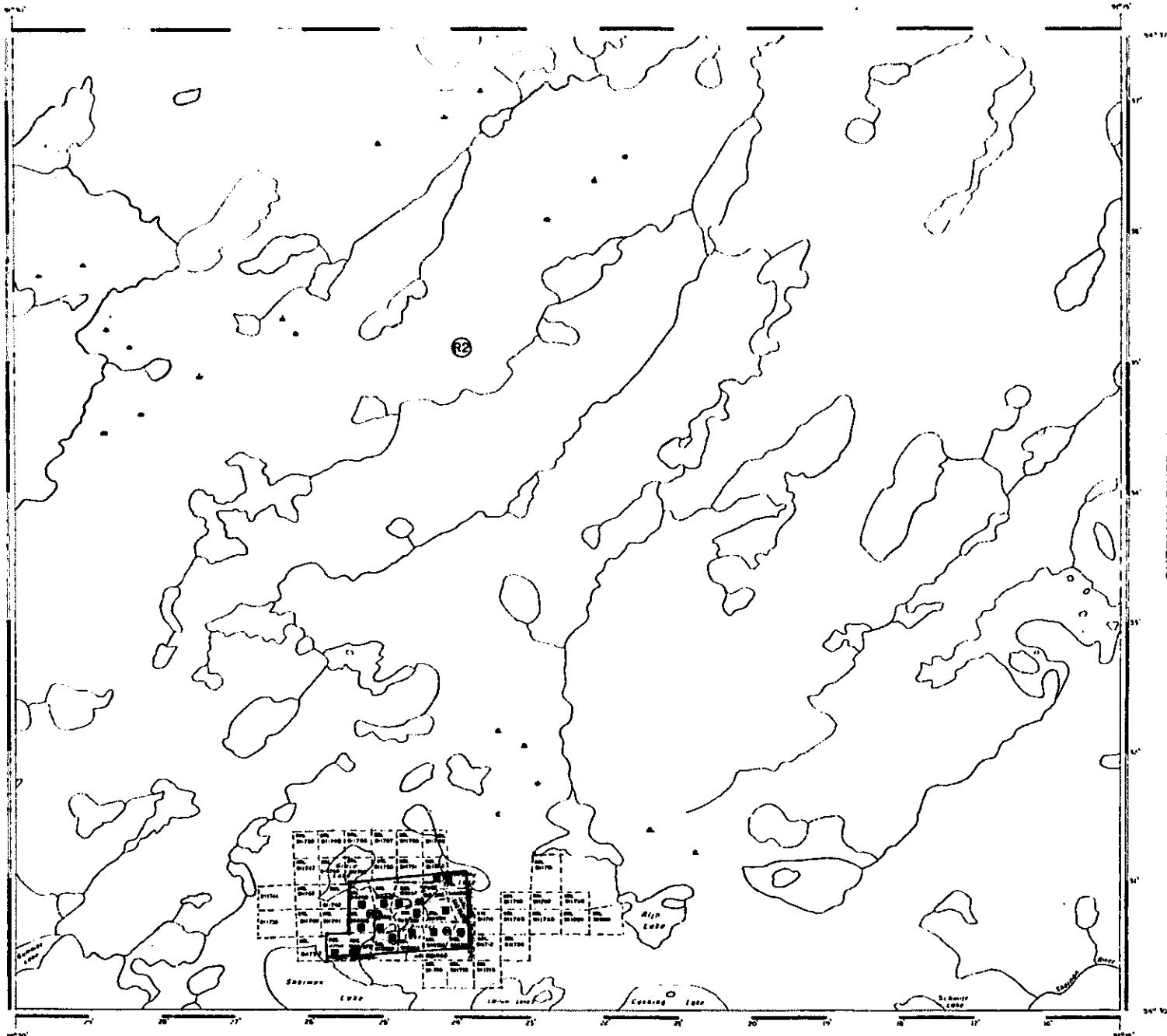
420 Surface Rights Noted Around the Shores of All Lakes and Rivers.



NATIONAL TOPOGRAPHIC SERIES 55JII

PLAN NO. **M-3323**

**MINISTRY OF
NATURAL RESOURCES
ONTARIO**



LEVITT LAKE AREA G-2103

SHERMAN RIVER G-2208

REFERENCES

AREAS WITHDRAWN FROM DISPOSITION

M.R.D. MINING RIGHTS ONLY
S.R.D. SURFACE RIGHTS ONLY
M.R.S. MINING AND SURFACE RIGHTS

Disposition: Area No. Date Description: No.

② M.F.C. 10 APR 1988 1048 1049 NOV 1988 1049A

③ FEDERAL OFF. FOR GEOLOGICAL SURVEY LITHOLOGICAL, STRATIGRAPHIC AND GEOLOGICAL MAPS

LEGEND

HIGHWAY AND ROUTE No.	
OTHER ROADS	
TRAILS	
SHORE VEGETATION	
TOWNSHIP, RANGE LINES ETC.	
LINES, MINING CLAIM PARCELS ETC.	
UNDEVELOPED LANDS	
LOT LINES	
PARCELS, BOUNDARY	
MINING CLAIMS ETC.	
RAILWAY AND RIGHT OF WAY	
UTILITY LINES	
NON-PERMANENT STRAITS	
FLOODING OR FLOODING RIGHTS	
SUBDIVISION OR COMPOSITE PLAN	
RESERVATIONS	
ORIGINAL SHORELINE	
BOUNDARY OF RESERVE	
MINES	
TRAVELER MONUMENT	

DISPOSITION OF CROWN LANDS

TYPE OF DOCUMENT	SYMBOL
PATENT SURFACE & MINING RIGHTS	
— SURFACE RIGHTS ONLY	
— MINING RIGHTS ONLY	
LEASE SURFACE & MINING RIGHTS	
— SURFACE RIGHTS ONLY	
— MINING RIGHTS ONLY	
LICENSE OF OCCUPATION	
ORDER IN COUNCIL	
RESERVATION	
CANCELLED	
SAND & GRAVEL	

NOTE: MINING RIGHTS IN PARCELS PATENTED PRIOR TO 1900 & NOT VESTED IN ORIGINAL PATENTEE BY THE MINING LANDS ACT R.S.O. 1970 CHAP. 286, SEC. 60 SUBSECTION 7

SCALE: 1 INCH = 40 CHAINS

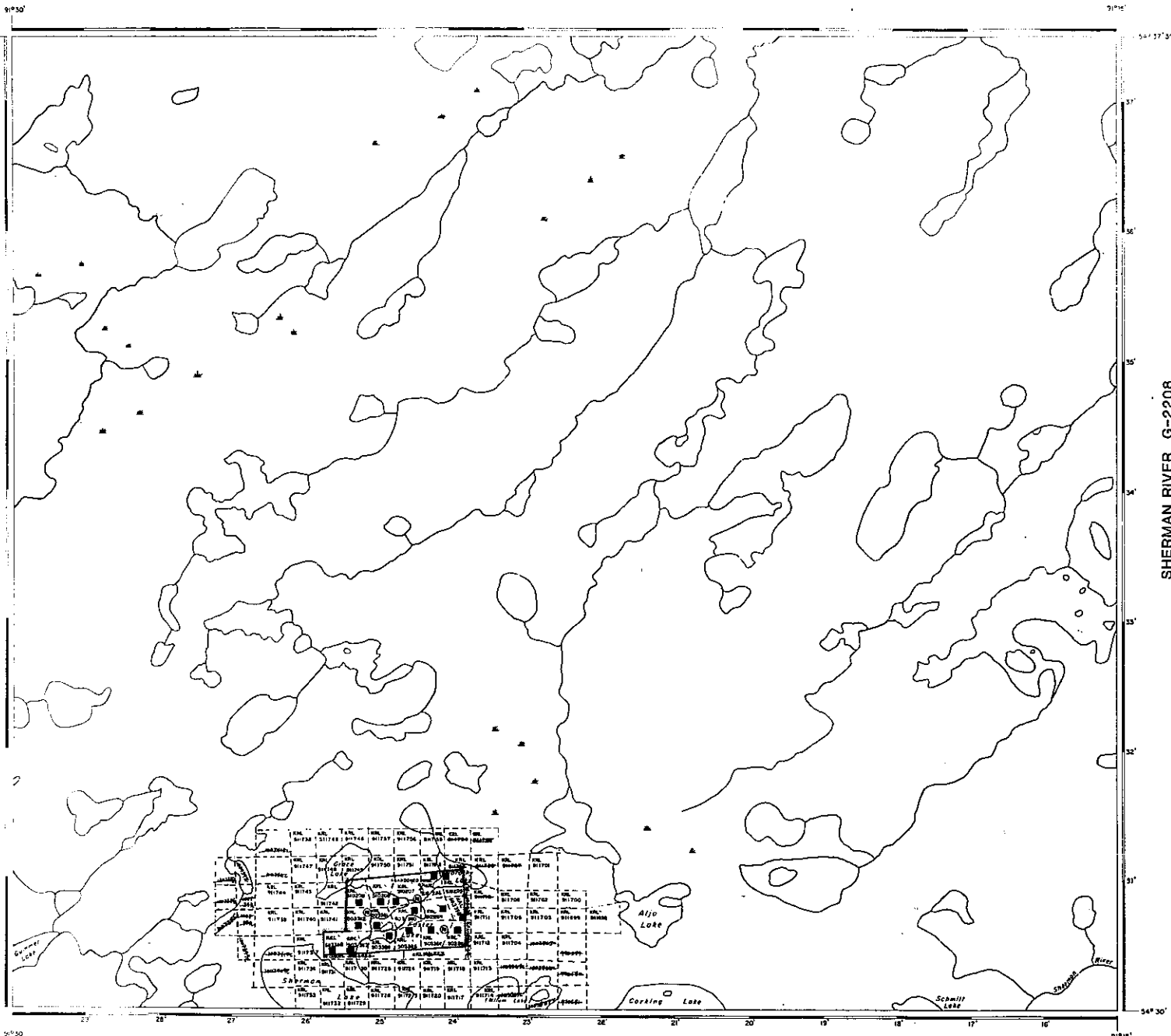


AREA 509 8 1000
ALJO LAKE
MINING DIVISION
M.R.B. ADMINISTRATIVE DISTRICT
SIoux LOOKOUT
MINING DIVISION
RED LAKE
LAND TITLES / REGISTRY DIVISION
KENORA - PATRICIA PORTION

Ministry of Natural Resources
Ministry of Northern Development and Mines

Date: MARCH, 1987
Sheet: G-1929

THE INFORMATION APPEARING ON THIS MAP HAS BEEN OBTAINED FROM AERIAL PHOTOGRAPHS AND ACCURACY IS NOT GUARANTEED. MINING TO THIS CLAIM IS SUBJECT TO THE RECORDS, MAPS AND INSTRUMENTS AND MINING RIGHTS ON THE STATE LANDS RECORD.



SHERMAN RIVER G-2208

LEVITT LAKE AREA G-2103

REFERENCES

AREAS WITHDRAWN FROM DISPOSITION

- M.R.O. MINING RIGHTS ONLY
- S.P.O. SURFACE RIGHTS ONLY
- M + S MINING AND SURFACE RIGHTS

© 2005 CANADIAN PATENT AND TRADE MARK OFFICE

DATE OF ISSUE

JAN 22 1999

PROVINCIAL RECORDS
OFFICE - WINNIPEG

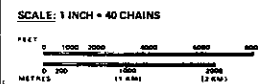
LEGEND

- HIGHWAY AND ROUTE No.
- OTHER ROADS
- TRAILS
- SURVEYED LINES
- TOWNSHIP, BASE LINES, ETC.
- LOTS, MINING CLAIMS, PARCELS, ETC.
- UNSURVEYED LINES
- LOT LINES
- PARCEL BOUNDARY
- MINING CLAIMS ETC.
- RAILWAY AND RIGHT OF WAY
- UTILITY LINES
- NON-PERENNIAL STREAM
- FLOODING OR FLOODING RIGHTS
- SUBDIVISION OR COMPOSITE PLAN
- RESERVATIONS
- ORIGINAL SHORELINE
- MARSH OR MUSKEG
- MINES
- TRAVERSE MONUMENT

DISPOSITION OF CROWN LANDS

TYPE OF DOCUMENT	SYMBOL
PATENT, SURFACE & MINING RIGHTS	○
- SURFACE RIGHTS ONLY	○
- MINING RIGHTS ONLY	○
LEASE, SURFACE & MINING RIGHTS	□
- SURFACE RIGHTS ONLY	□
- MINING RIGHTS ONLY	□
LICENCE OF OCCUPATION	▽
ORDER IN COUNCIL	◇
RESERVATION	◇
CANCELLED	◇
SAND & GRAVEL	◇

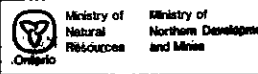
NOTE: MINING RIGHTS IN PARCELS PATENTED PRIOR TO MAY 8, 1915, VESTED IN ORIGINAL PATENTEE BY THE PUBLIC LANDS ACT, R.S.O. 1970, CHAP. 306, SEC. 62, SUBSEC. 1.



AREA

ALJO LAKE

M.N.R. ADMINISTRATIVE DISTRICT
SIoux LOOKOUT
MINING DIVISION
RED LAKE
LAND TITLES / REGISTRY DIVISION
KENORA - PATRICIA PORTION



Date: MARCH 1999
Sheet: **G-1929**

THE INFORMATION APPEARS ON THIS MAP FROM VARIOUS SOURCES AND ACCURACY IS NOT GUARANTEED. THE USER IS ADVISED TO VERIFY THE INFORMATION WITH THE RECORDS OF THE FEDERAL GOVERNMENT AND THE RECORDS OF THE PROVINCE OF ONTARIO ON THE STATUS OF THE LANDS SHOWN ON THIS MAP.