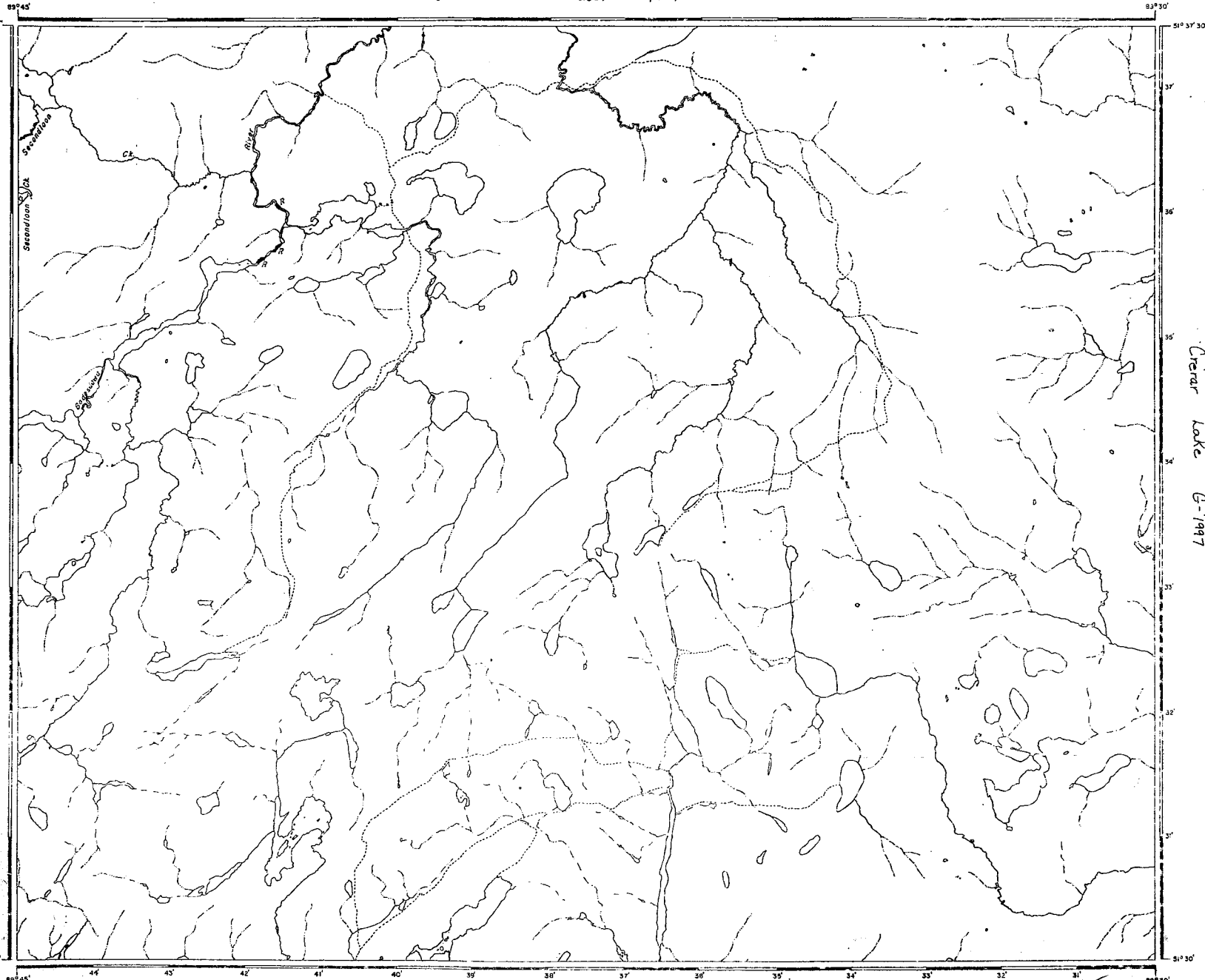


Collishaw Lake (East) G-1704



Etowamami River G-2030

LEGEND

- HIGHWAY AND ROUTE No.
- OTHER ROADS
- TRAILS
- SURVEYED LINES:
 - TOWNSHIP, RANGE LINES, ETC.
 - LOTS, MINING CLAIMS, -APCELS, ETC.
- UNSURVEYED LINES:
 - LOT LINES
 - PARCEL BOUNDARY
 - MINING CLAIMS, ETC.
- RAILWAY AND RIGHT OF WAY
- UTILITY LINES
- NON-PERENNIAL STREAM
- FLOODING OR FLOODING RIGHTS
- SUBDIVISION OR COMPOSITE PLAT
- RESERVATIONS
- ORIGINAL SHORELINE
- MARSH OR MUCK
- MINES
- TRAVERSE MONUMENT

DISPOSITION OF CROWN LANDS

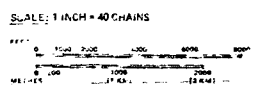
TYPE OF DOCUMENT	SYMBOL
PATENT, SURFACE & MINING RIGHTS	●
" SURFACE RIGHTS ONLY	○
" MINING RIGHTS ONLY	◐
LEASE, SURFACE & MINING RIGHTS	■
" SURFACE RIGHTS ONLY	◼
" MINING RIGHTS ONLY	◑
LICENSE OF OCCUPATION	▼
ORDER-IN-COUNCIL	OC
RESERVATION	○
CANCELLED	○
SAND & GRAVEL	○

NOTE: MINING RIGHTS IN PARCELS PATENTED PRIOR TO MAY 1, 1912, VESTED IN ORIGINAL PATENTERS BY THE MINING ACT, R.S.O. 1912, CHAP. 206, SEC. 65, SUBSEC. 1.

REFERENCES

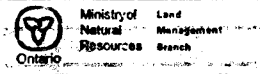
AREAS WITHDRAWN FROM DISPOSITION

" M.R. - MINING RIGHTS ONLY
 " S.R.O. - SURFACE RIGHTS ONLY
 " M. & S. - MINING AND SURFACE RIGHTS



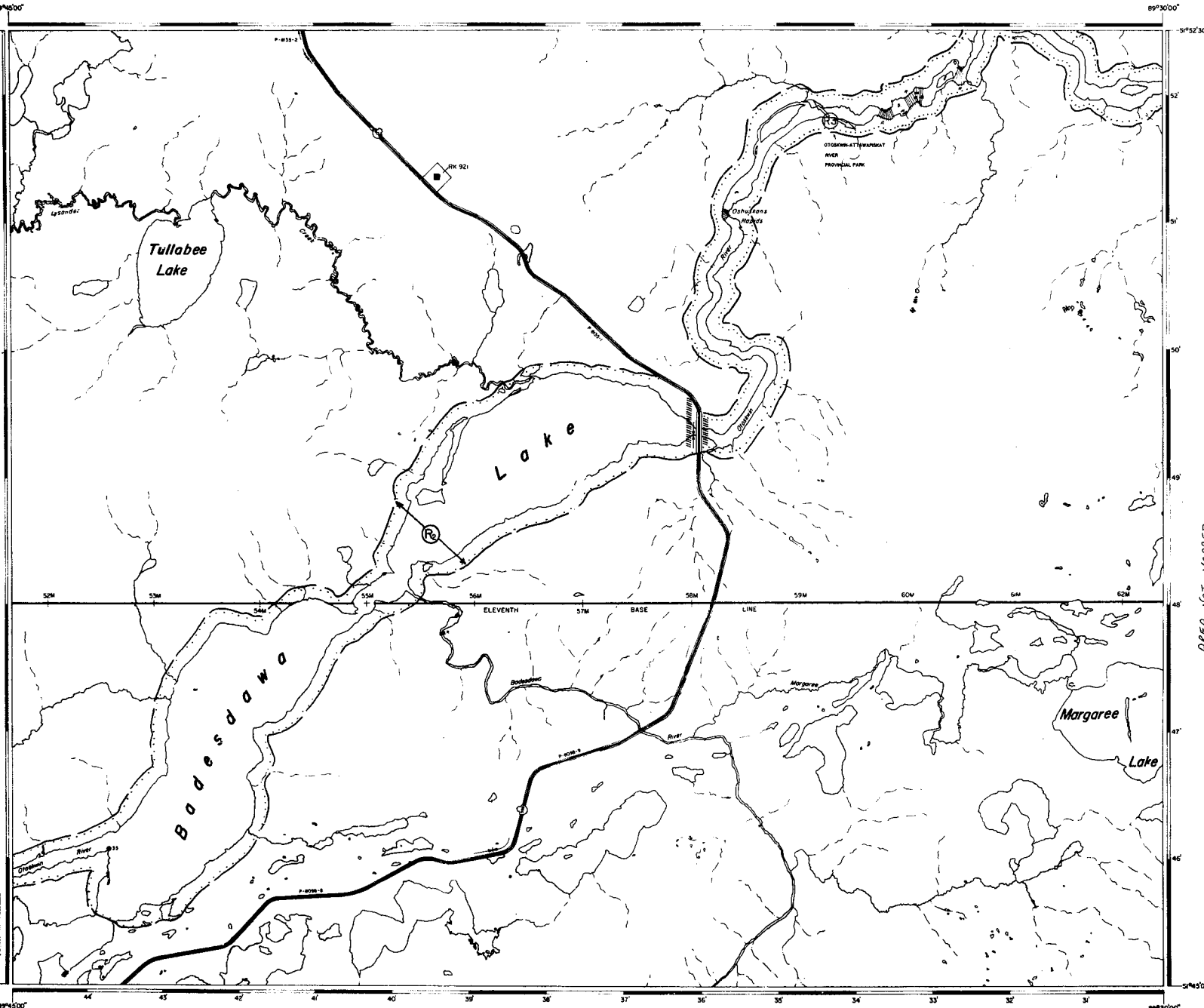
AREA **BADESOWA RIVER**

M.N.R. ADMINISTRATIVE DISTRICT
SIOUX LOOKOUT
 MINING DIVISION
PATRICIA
 LAND TITLED / REGISTRY DIVISION
KENORA (PATRICIA PORTION)



Date **FEBRUARY, 1904** Map No. **G-1942**

CAWSTON LAKES G-1987



COLLISHAW LAKE (EAST SECTION) G-1704

LEGEND

- HIGHWAY AND ROUTE No
- OTHER ROADS
- TRAILS
- SURVEYED LINES
- TOWNSHIP, BASE LINES, ETC
- LOTS, MINING CLAIMS, PARCELS, ETC
- UNSURVEYED LINES
- LOT LINES
- PARCEL BOUNDARY
- MINING CLAIMS ETC
- RAILWAY AND RIGHT OF WAY
- UTILITY LINES
- NON PERENNIAL STREAM
- FLOODING OR FLOODING RIGHTS
- SUBDIVISION OR COMPOSITE PLAN
- RESERVATIONS
- ORIGINAL SHORELINE
- MARSH OR MUSKEG
- MINES
- TRAVERSE MONUMENT

DISPOSITION OF CROWN LANDS

TYPE OF DOCUMENT	SYMBOL
PATENT, SURFACE & MINING RIGHTS	●
- SURFACE RIGHTS ONLY	○
- MINING RIGHTS ONLY	◉
LEASE, SURFACE & MINING RIGHTS	◻
- SURFACE RIGHTS ONLY	◻
- MINING RIGHTS ONLY	◻
LICENCE OF OCCUPATION	▽
ORDER IN COUNCIL	OC
RESERVATION	⊙
CANCELLED	⊖
SAND & GRAVEL	⊙

NOTE: MINING RIGHTS IN PARCELS PATENTED PRIOR TO MAY 6, 1912, VESTED IN ORIGINAL PATENTEES BY THE PUBLIC LANDS ACT R.S.O. 1979, CHAP. 306, SEC. 90, SUBSEC. 1.

AREA NOT MAPPED

SCALE: 1 INCH = 40 CHAINS



AREA **BADESDAWA LAKE**

N.W.B. ADMINISTRATIVE DISTRICT

SIOUX LOOKOUT

MINING DIVISION

PATRICIA

LAND TITLES / REGISTRY DIVISION

KENORA (PATRICIA PORTION)



Date JANUARY, 1964

Sheet

G-1943

57993

REFERENCES

AREAS WITHDRAWN FROM DISPOSITION

M.R.O. - MINING RIGHTS ONLY

S.R.O. - SURFACE RIGHTS ONLY

M.+S. - MINING AND SURFACE RIGHTS

Description	Order No.	Date	Disposition	File
① PARK RESERVE	W-00/00- W-03/01	07/00/00- 07/04/17	M.R.S.	100530
② PARK RESERVE	W70/00	07/00/00	M.R.S.	100000

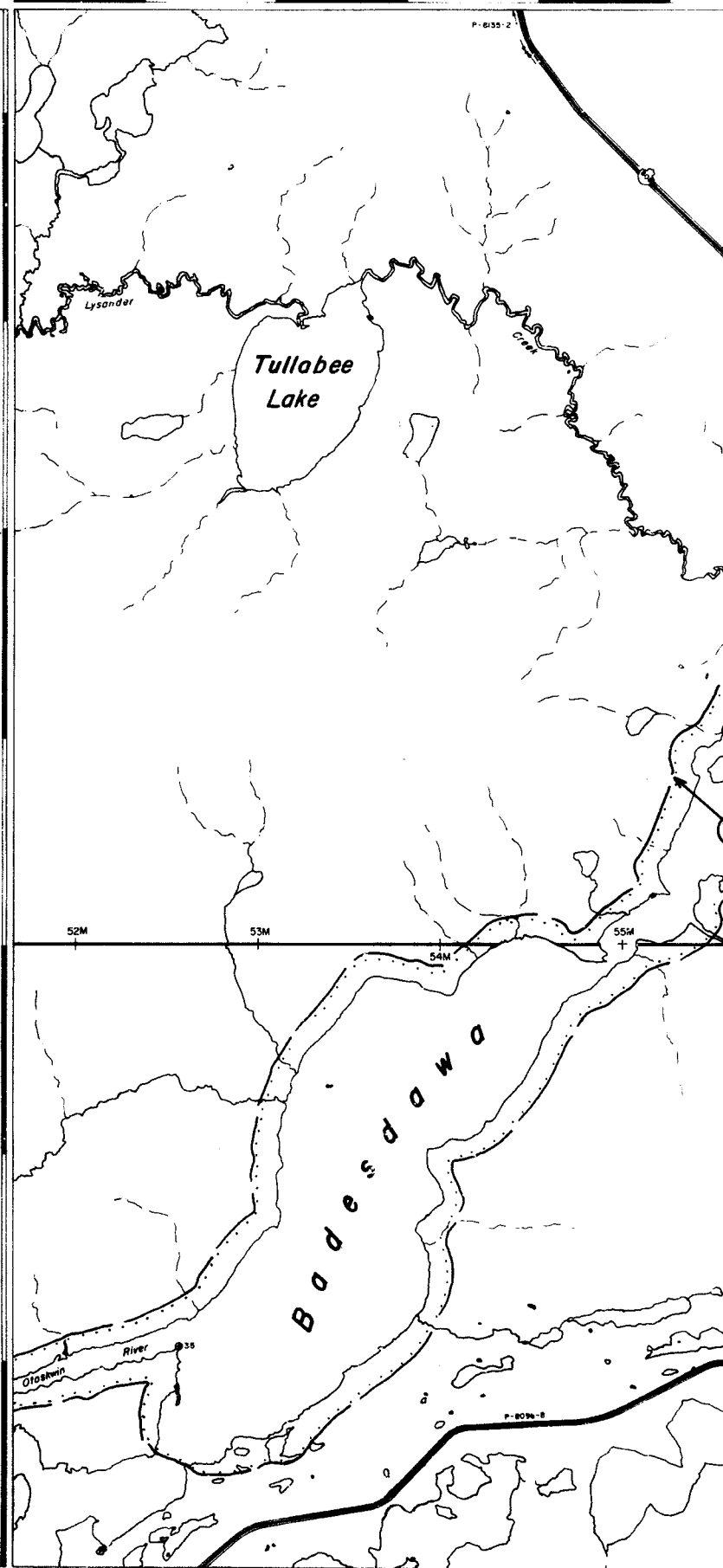
July 10/00

89°45'00"

51°52'30"

P-6355-2

SPRUCE RIVER G-2223



THE INFORMATION THAT APPEARS ON THIS MAP HAS BEEN COMPILED FROM VARIOUS SOURCES, AND ACCURACY IS NOT GUARANTEED. THOSE WISHING TO STAKE MINING CLAIMS SHOULD CONSULT WITH THE MINING RECORDER, MINISTRY OF NORTHERN DEVELOPMENT AND MINES, FOR ADDITIONAL INFORMATION ON THE STATUS OF THE LANDS SHOWN HEREON.

PATRICIA HINDSON
RECEIVED
 A.M. 07/10/00
 200-347-0-10000

51°45'00"

89°45'00"

44 43 42 41 40

COLL...

COLLISHAW LAKE (EAST PART) C-1704

AREA OF
BADESDAWA RIVER
DISTRICT OF
KENORA
PATRICIA PORTION
PATRICIA
MINING DIVISION
SCALE: 1-INCH = 40 CHAINS

LEGEND

- PATENTED LAND ⊙
- CROWN LAND SALE ⊙
- LEASES ⊙
- LOCATED LAND ⊙
- LICENSE OF OCCUPATION ⊙
- MINING RIGHTS ONLY ⊙
- SURFACE RIGHTS ONLY ⊙
- ROADS —
- IMPROVED ROADS —
- KING'S HIGHWAYS —
- RAILWAYS —
- POWER LINES —
- HAZEL OR MASKEG MINES A B
- CANCELLED C

NOTES

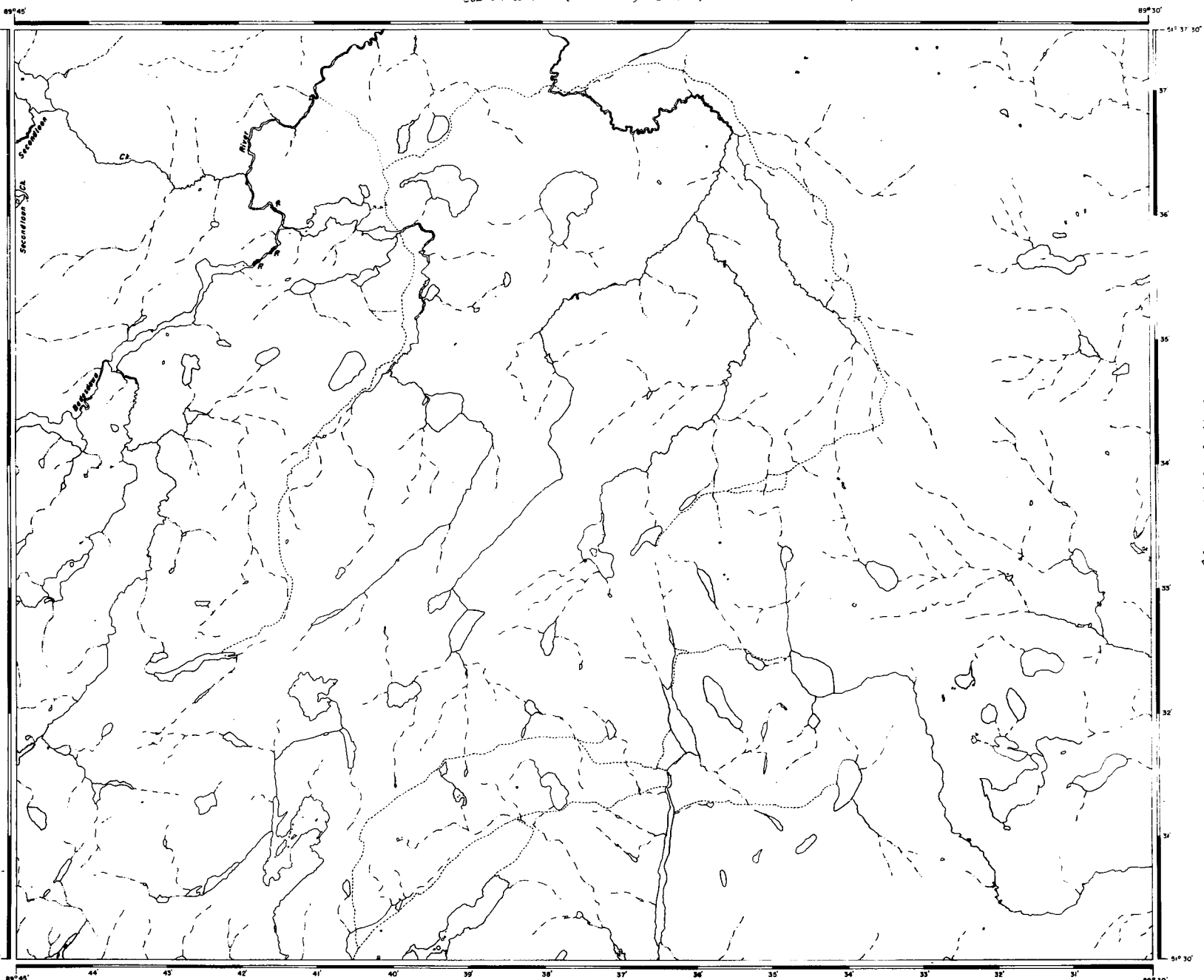
400' surface rights reservation along the shores of all lakes and rivers.

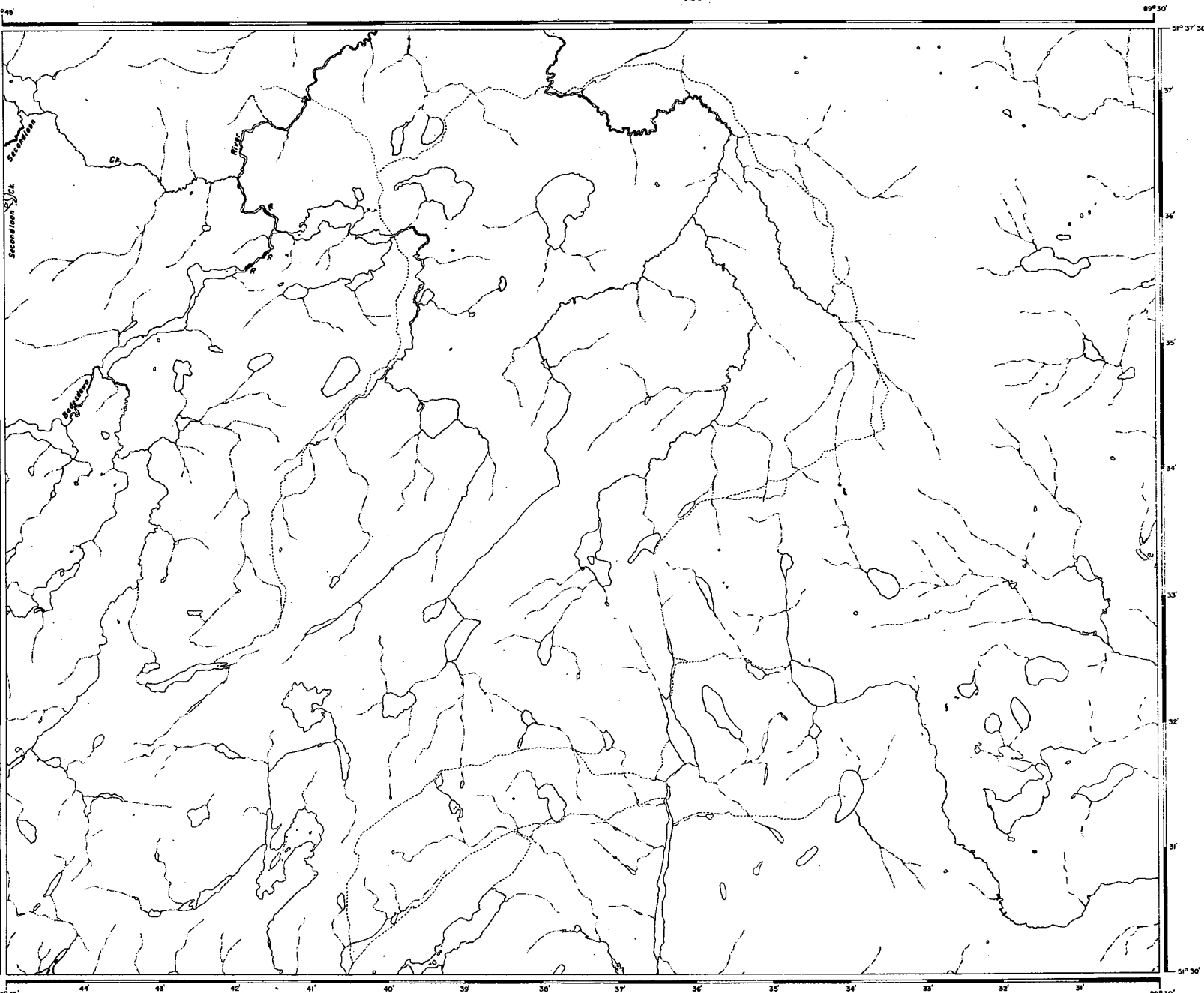
CREAR RIVER C-1997

NATIONAL TOPOGRAPHIC SERIES 52P
PLAN NO. M.2169
ONTARIO
MINISTRY OF NATURAL RESOURCES
SURVEYS AND MAPPING BRANCH

1987

ETOWAHAMI RIVER B-2030





AREA OF

BADESDAWA RIVER

DISTRICT OF
KENORA
PATRICIA PORTION

PATRICIA
MINING DIVISION

SCALE: 1-INCH = 40 CHAINS

LEGEND

PATENTED LAND	⊙
CROWN LAND SALE	⊙
LEASES	⊙
LOCATED LAND	⊙
LICENSE OF OCCUPATION	⊙
MINING RIGHTS ONLY	L.O.
SURFACE RIGHTS ONLY	M.R.O.
ROADS	—
IMPROVED ROADS	—
KING'S HIGHWAYS	—
RAILWAYS	—
POWER LINES	—
MARSH OR MUSKEG	—
MINES	—
CANCELLED	—

NOTES

400' surface rights reservation along the shores
of all lakes and rivers.

G 1942

DATE OF ISSUE
JUN 5 1952
Ministry of Natural Resources
TORONTO

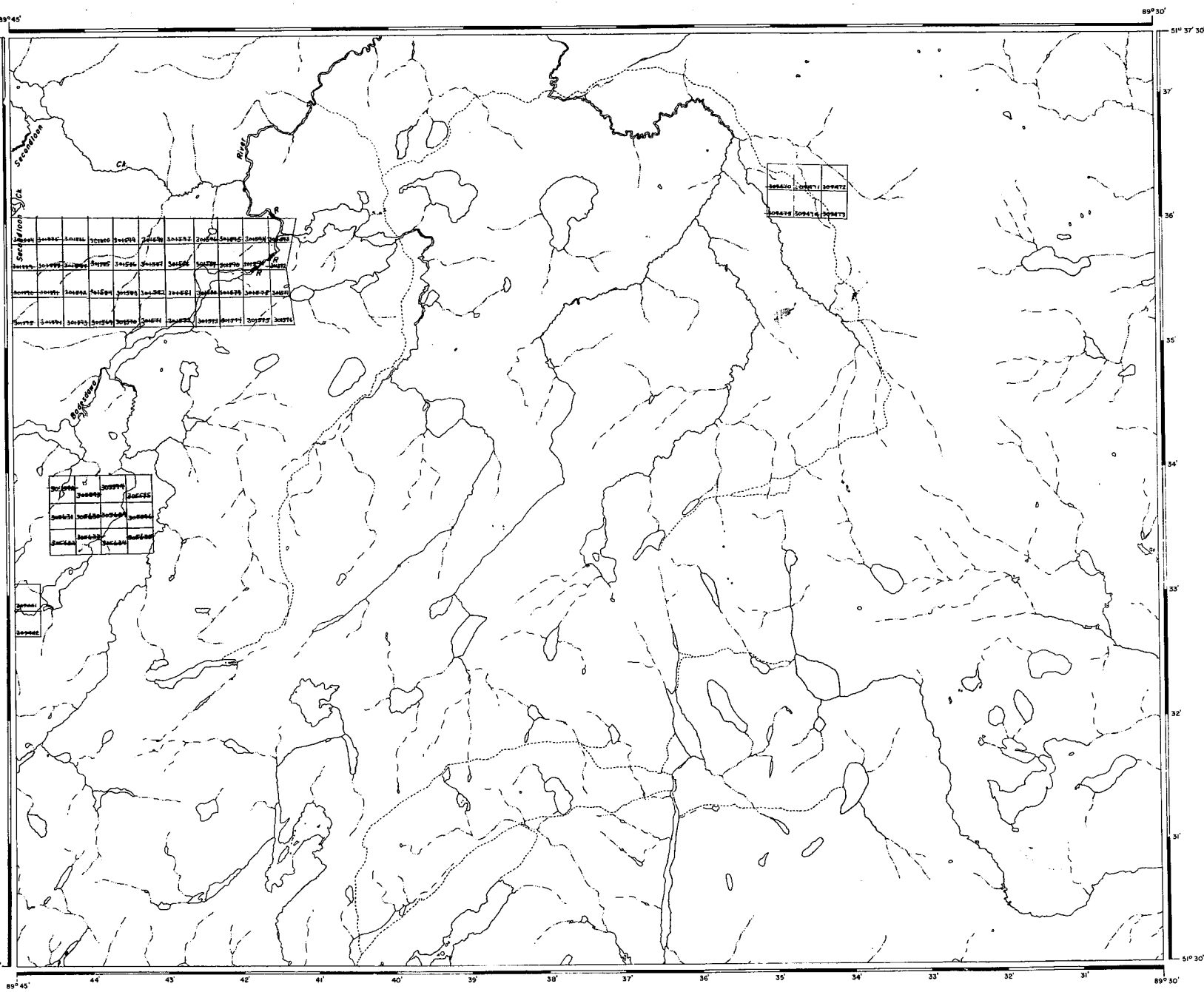
#3

NATIONAL TOPOGRAPHIC SERIES 52P

PLAN NO. M.2169

ONTARIO
MINISTRY OF NATURAL RESOURCES
SURVEYS AND MAPPING BRANCH





AREA OF
BADESDAWA RIVER
 DISTRICT OF KENORA
 PATRICIA PORTION
 PATRICIA MINING DIVISION
 SCALE: 1-INCH = 40 CHAINS

- LEGEND**
- PATENTED LAND ⊙
 - CROWN LAND SALE ⊖
 - LEASES ⊕
 - LOCATED LAND L.C.
 - LICENSE OF OCCUPATION L.O.
 - MINING RIGHTS ONLY M.R.O.
 - SURFACE RIGHTS ONLY S.R.O.
 - ROADS —
 - IMPROVED ROADS =
 - KING'S HIGHWAYS =
 - RAILWAYS =
 - POWER LINES —
 - MARSH OR MUSKEG [Symbol]
 - MINES [Symbol]
 - CANCELLED c.

NOTES

400' surface rights reservation along the shores of all lakes and rivers.

#1

G-1942

PATRICIA
 RECEIVED
 SEP - 5 1969
 10.10.11.12.13.14.15

PLAN NO. **M.2169**

DEPARTMENT OF MINES
 — ONTARIO —

