

WEST OF BANIPATAU CREEK

SOUTH OF BANIPATAU CREEK

LEGEND

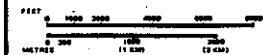
HIGHWAY AND ROUTE No.	
OTHER ROADS	
TRAILS	
SURVEYED LINES:	
TOWNSHIPS, BASE LINES, ETC.	
LOTS, MINING CLAIMS, PARCELS, ETC.	
UNSURVEYED LINES:	
LOT LINES	
PARCEL BOUNDARY	
MINING CLAIMS ETC.	
RAILWAY AND RIGHT OF WAY	
UTILITY LINES	
NON-PERENNIAL STREAM	
FLOODING OR FLOODING RIGHTS	
SUBDIVISION OR COMPOSITE PLAN	
RESERVATIONS	
ORIGINAL SHORELINE	
MARSH OR MUSKEG	
MINES	
TRAVERSE MONUMENT	

DISPOSITION OF CROWN LANDS

TYPE OF DOCUMENT	SYMBOL
PATENT, SURFACE & MINING RIGHTS	
- SURFACE RIGHTS ONLY	
- MINING RIGHTS ONLY	
LEASE, SURFACE & MINING RIGHTS	
- SURFACE RIGHTS ONLY	
- MINING RIGHTS ONLY	
LICENCE OF OCCUPATION	
ORDER-IN-COUNCIL	
RESERVATION	
CANCELLED	
SAND & GRAVEL	

NOTE: MINING RIGHTS IN PARCELS PATENTED PRIOR TO MAY 6, 1915, VESTED BY ORIGINAL PATENTEE BY THE PUBLIC LANDS ACT, R.S.A. 1914, CHAP. 264, SEC. 48, SUBSEC. 1.

SCALE: 1 INCH = 40 CHAINS



AREAS WITHDRAWN FROM DISPOSITION

M.R.O. - MINING RIGHTS ONLY
 S.R.O. - SURFACE RIGHTS ONLY
 M+S - MINING AND SURFACE RIGHTS

Description	Order No.	Date	Disposition	File
WINDY RIVER PROVINCIAL PARK (INTERMEDIATE) 122 METERS FROM HIGHWATER MARK D. REG. 52/810				

THE INFORMATION THAT APPEARS ON THIS MAP HAS BEEN COMPILED FROM VARIOUS SOURCES AND ACCURACY IS NOT GUARANTEED. THOSE WISHING TO STAKE MINING CLAIMS SHOULD CONSULT WITH THE MINING RECORDER, MINISTRY OF NORTHERN DEVELOPMENT AND MINES FOR ADDITIONAL INFORMATION ON THE STATUS OF THE LANDS SHOWN HEREON.

AREA

BANIPATAU CREEK

M.N.R. ADMINISTRATIVE DISTRICT

MOOSONEE

MINING DIVISION

PORCUPINE

LAND TITLES / REGISTRY DIVISION

KENORA PATRICIA/PORION

Ministry of Natural Resources
 Ministry of Northern Development and Mines

Date OCTOBER/1987

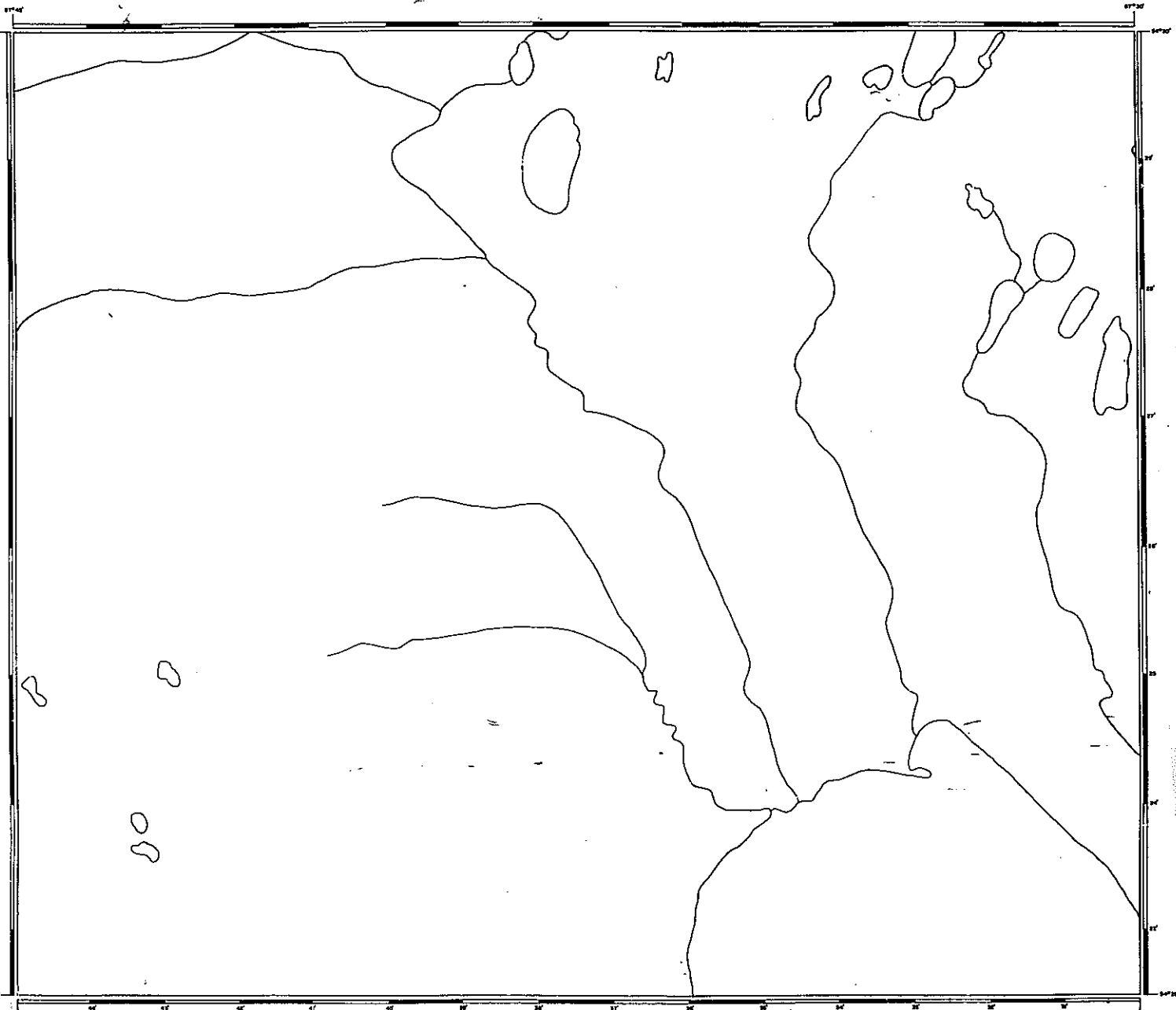
CLEANED OCT 21/87

Sheet

G-1233

545872

WEST OF BANIPATAU CREEK



SOUTH OF BANIPATAU CREEK

WEST OF WINISK INDIAN RESERVE

THE INFORMATION THAT APPEARS ON THIS MAP HAS BEEN COMPILED FROM VARIOUS SOURCES AND ACCURACY IS NOT GUARANTEED. THOSE DESIRING TO OBTAIN MORE DETAILED INFORMATION SHOULD CONSULT THE RECORDS OF THE LAND SURVEY DEPARTMENT AND MAKE PURCHASES ON THE BASIS OF THE LATEST RECORD INFORMATION.

LEGEND

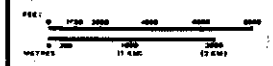
HIGHWAY AND ROUTE No.	
OTHER ROADS	
TRAILS	
SURVEYED LINES:	
TOWNSHIPS, RANGE LINES, ETC.	
LOVE, MINING CLAIM, PARCELS, ETC.	
UNSURVEYED LINES:	
LOT LINES	
PARCEL BOUNDARY	
MINING CLAIM, ETC.	
RAILWAY AND RIGHT OF WAY	
UTILITY LINES:	
NON-PERMANENT STREAM	
FLOODING OR FLOODING RIGHTS	
SUBDIVISION OR COMPOSITE PLAN	
RESERVATION	
ORIGINAL SHORELINE	
LOCATION MUSEUM	
MARKER	
TRAVERSE MONUMENT	

DISPOSITION OF CROWN LANDS

TYPE OF DOCUMENT	SYMBOL
PATENT, SURFACE & MINING RIGHTS	
- SURFACE RIGHTS ONLY	
- MINING RIGHTS ONLY	
LEASE, SURFACE & MINING RIGHTS	
- SURFACE RIGHTS ONLY	
- MINING RIGHTS ONLY	
LICENCE OF OCCUPATION	
ORDER-IN-COUNCIL	
RESERVATION	
CANCELLED	
SAND & GRAVEL	

NOTE: MINING RIGHTS IN PARCELS PATENTED PRIOR TO MAY 4, 1911, UNDER AN ORIGINAL PATENT OF THE PUBLIC LANDS ACT, R.S.A. 1906, CAP. 204, SEC. 20, SHOULD BE

SCALE: 1 INCH = 40 CHAINS

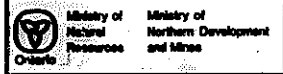


AREAS WITHDRAWN FROM DISPOSITION

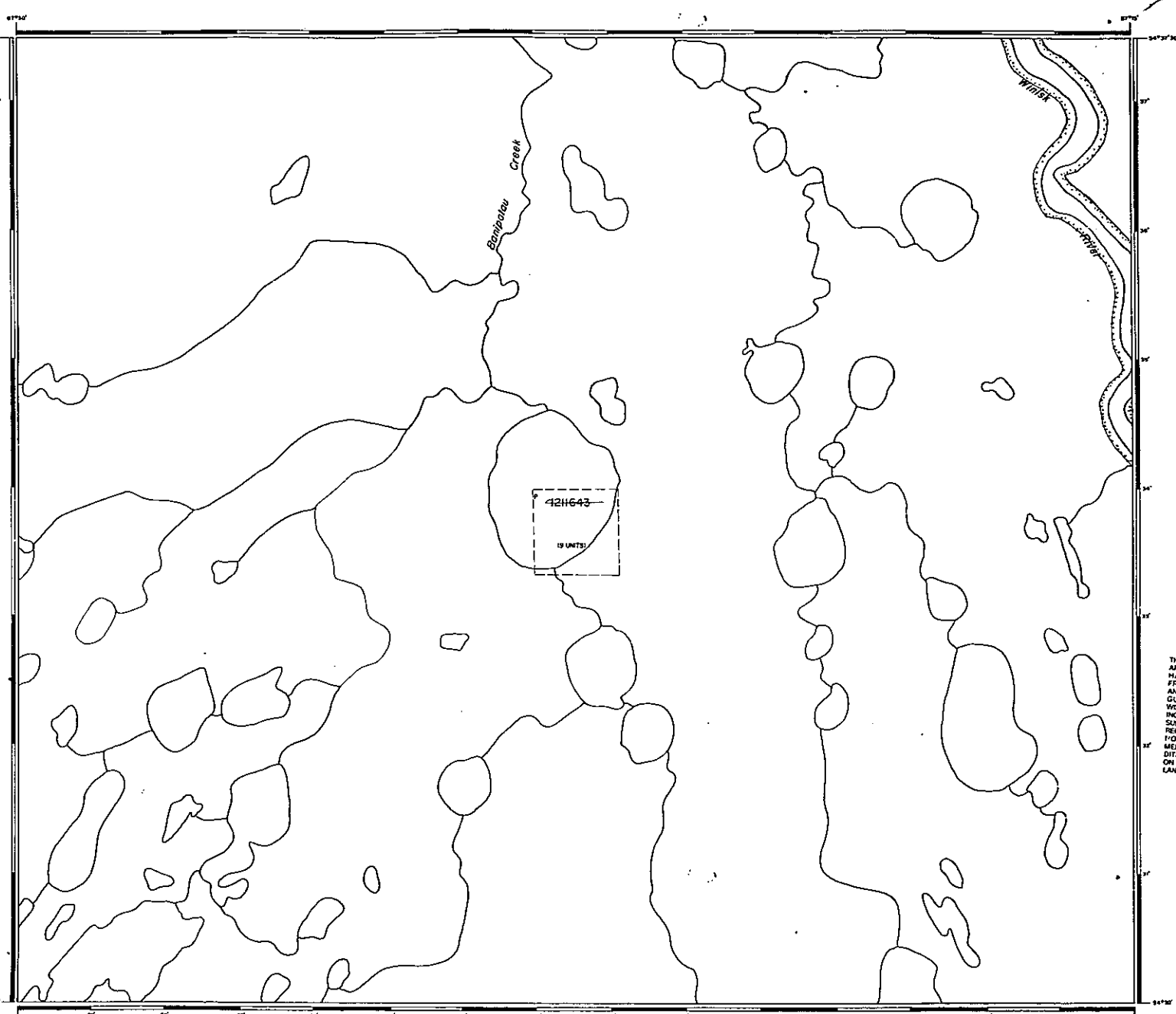
DESCRIPTION	DATE	BY WHOM	REASON
M.S.R. - MINING RIGHTS ONLY			
S.R.S. - SURFACE RIGHTS ONLY			
M.S. & S. - MINING AND SURFACE RIGHTS			

AREA SOUTH WEST OF BANIPATAU CREEK

M.S.R. ADMINISTRATIVE DISTRICT
MOOSENEE
 DIVISION 9/1910
PORCUPINE
 LAND TITLES / REGISTRY DIVISION
KENORA PATRICIA/PORTION



344 OCTOBER 1987
 G-1246



SOUTH OF BANIPATAU CREEK

THE INFORMATION THAT APPEARS ON THIS MAP HAS BEEN COMPILED FROM VARIOUS SOURCES AND ACCURACY IS NOT GUARANTEED. THOSE WISHING TO STAKE MINING CLAIMS SHOULD CONSULT WITH THE MINING SECTION, MINISTRY OF NORTHERN DEVELOPMENT AND MINES FOR ADDITIONAL INFORMATION ON THE STATUS OF THE LANDS SHOWN HEREON.

LEGEND

- HIGHWAY AND ROUTE No.
- OTHER ROADS
- TRAILS
- SURVEYED LINES:
 - TOWNSHIPS, BASE LINES, ETC.
 - LOTS, MINING CLAIMS, PARCELS, ETC.
- UNSURVEYED LINES:
 - LOT LINES
 - PARCEL BOUNDARY
 - MINING CLAIMS ETC.
- RAILWAY AND RIGHT OF WAY
- UTILITY LINES
- NON-PERMANENT STREAM
- FLOODING OR FLOODING RIGHTS
- SUBDIVISION OR COMPOSITE PLAN RESERVATIONS
- ORIGINAL SHORELINE
- MARSH OR MUSKEG
- MINES
- TRAVERSE MONUMENT

DISPOSITION OF CROWN LANDS

TYPE OF DOCUMENT	SYMBOL
PATENT, SURFACE & MINING RIGHTS	
" SURFACE RIGHTS ONLY	
" MINING RIGHTS ONLY	
LEASE, SURFACE & MINING RIGHTS	
" SURFACE RIGHTS ONLY	
" MINING RIGHTS ONLY	
LICENCE OF OCCUPATION	
ORDER-IN-COUNCIL	
RESERVATION	
CANCELLED	
SAND & GRAVEL	

NOTE: MINING RIGHTS IN PARCELS PATENTED PRIOR TO MAY 1, 1912, VESTED IN GENERAL PATENTS BY THE PUBLIC LANDS ACT, R.S.O. 1970, CHAP. 284, SEC. 61, SUBSEC. 1.

SCALE: 1 INCH = 40 CHAINS



AREAS WITHDRAWN FROM DISPOSITION

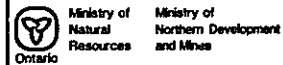
- M.R.O. - MINING RIGHTS ONLY
 - S.R.O. - SURFACE RIGHTS ONLY
 - M+S - MINING AND SURFACE RIGHTS
- Order No. Date Disposition File
- WITEK RIVER PROVINCIAL PARK (WATERWAY)
100 METERS FROM HIGHWATER MARK
S.O. REG. 52/194

DATE OF ISSUE

MAY 8 4 1989
PROVINCIAL RECORDING OFFICE - SUDBURY

AREA
BANIPATAU CREEK

M.N.R. ADMINISTRATIVE DISTRICT
MOOSONEE
MINING DIVISION
PORCUPINE
LAND TITLES / REGISTRY DIVISION
KENORA PATRICIA/PORTRON



Date OCTOBER/1987
ISSUED OCT 21/87
G-1233