

1947

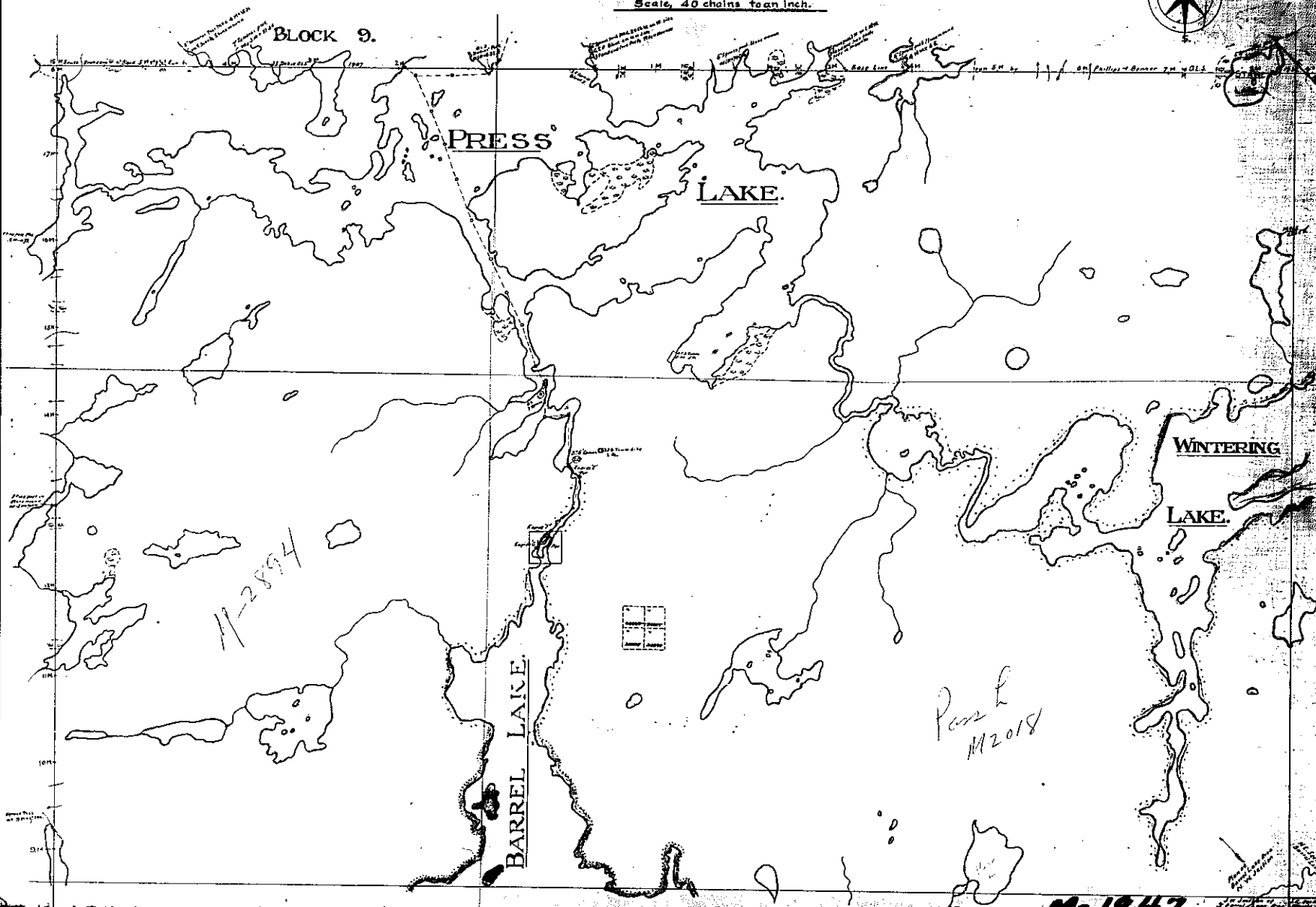
M-1947

# BARREL LAKE AREA.

DISTRICT OF KENORA.

Scale, 40 chains to an inch.

RECEIVED  
NOV 8 1952  
STANDARD TIME INC.  
Nov. 13/52



M-1947

NSPE. Surplus measurements & 00 miles by Dept. of L.A.

M-1947

# BARREL LAKE AREA.

DISTRICT OF KENORA.

Scale, 40 chains to an inch.

RECEIVED  
NOV 4 1922  
Nov 15/24



BLOCK 9.

PRESS

LAKE.

WINTERING

LAKE.

BARREL LAKE.

M-2894

Part L  
M2018

NOTE: Suppose measurements 100' wide by 200' deep for...

M-1947

1947

M-1947

# BARREL LAKE AREA.

DISTRICT OF KENORA.

Scale, 40 chains to an inch.

RECEIVED  
NOV 8 1962  
STANDARD BUREAU OF  
NOV 13/62



BLOCK 9.

PRESS

LAKE.

WINTERING

LAKE.

BARREL LAKE.

11-2894

Part L  
M2018

M-1947 BARREL LK

NOTE: Survey conducted in 1904

