

# DURBAN TWP.

## SUDBURY MINING DIVISION. DISTRICT OF ALGOMA.

Areas withdrawn from staking under Section 36 of the Mining Act (R.S.O. 1980).

Order No.	File	Date	Disposition
W. 1/83	136714	28/3/83	S.R.B.M.R.

Scale 40 chains to an inch.

ONTARIO

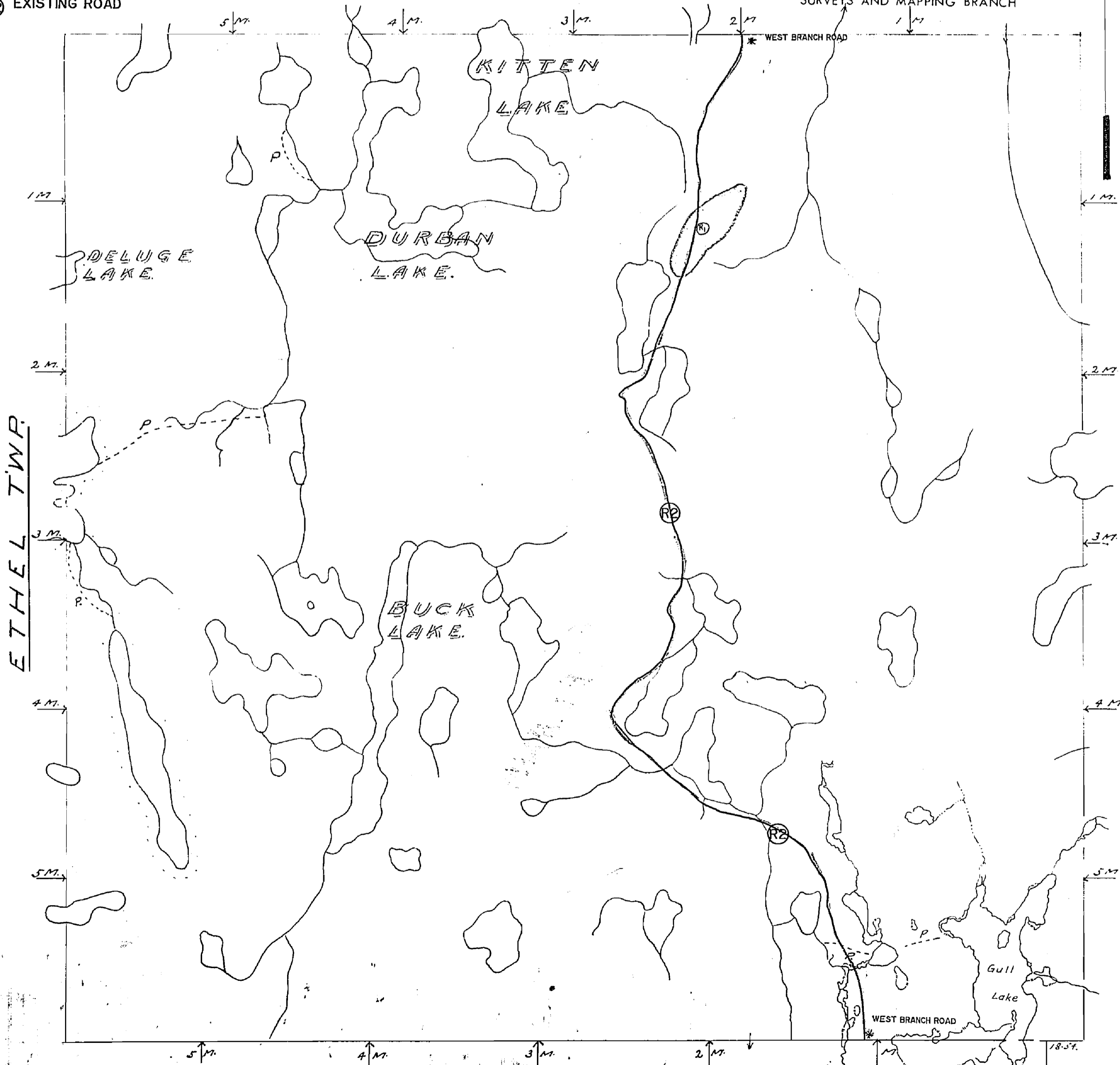
MINISTRY OF NATURAL RESOURCES

SURVEYS AND MAPPING BRANCH



R2 EXISTING ROAD

IVY TWP.



TWP. "L"

\* (SEE N.T.S. 410/SE BISCOTASING PROVINCIAL SERIES MAP SHEET FOR PROPER LOCATION OF WEST BRANCH ROAD)

FLOODING RIGHTS TO 110.0 K.V.P. Co. Ltd. File: 136714

DATE OF ISSUE  
JUN 18 1974

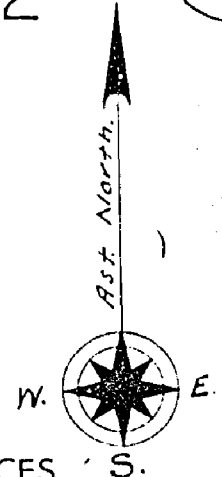
OFFICE USE ONLY PLAN OF

M.772

# DURBAN TWP.

SUDBURY MINING DIVISION.  
DISTRICT OF ALGOMA.

Scale 40 chains to an inch.



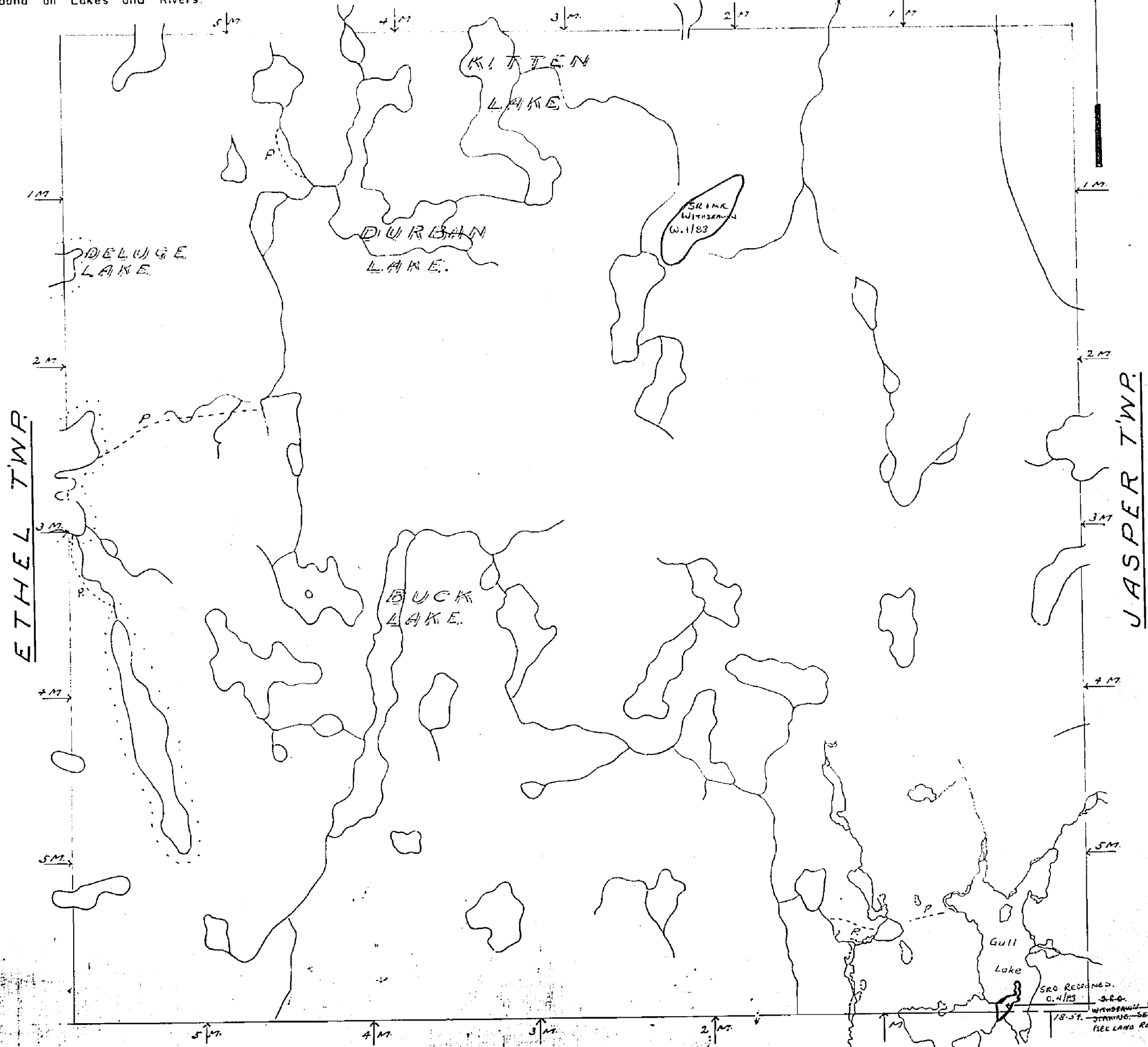
ONTARIO

MINISTRY OF NATURAL RESOURCES

SURVEYS AND MAPPING BRANCH

IVY TWP.

NOTE  
400' Surface Rights Reservation  
around all Lakes and Rivers.



SRMA RECORDED  
6.4183  
1/8-57  
WITHDRAWN FROM  
STANDARD - SEE 42  
(SEE LAND ROLL)

## DURBAN

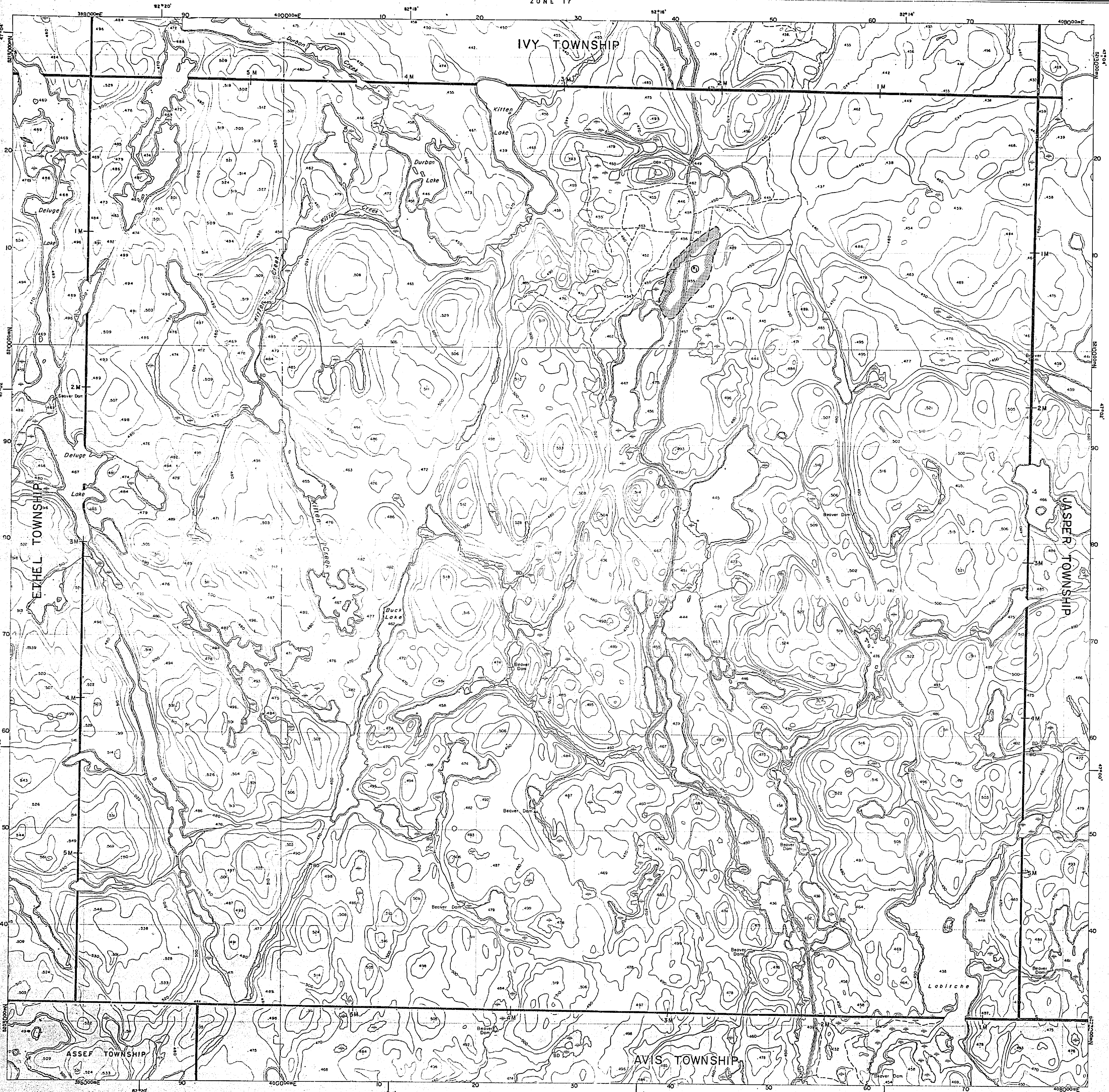
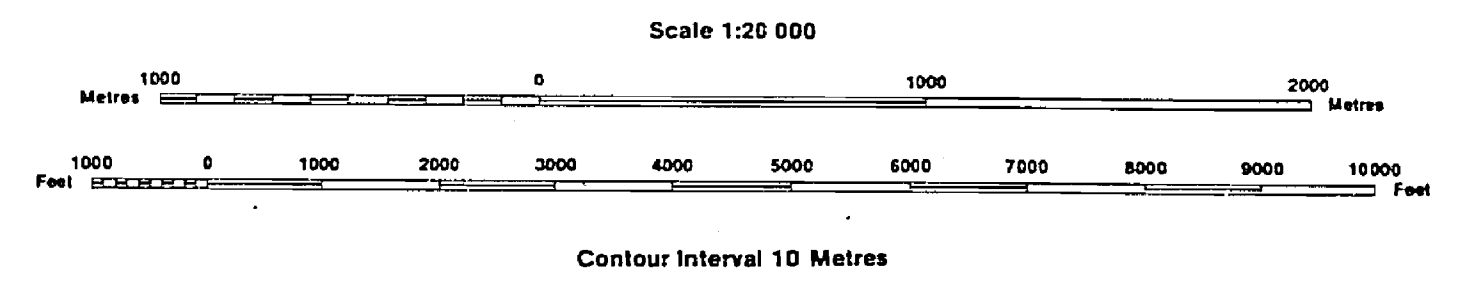
FLOODING RIGHTS TO 110'0  
M.V.P. Co. Ltd. File: 136714

**INDEX TO LAND DISPOSITION**

PLAN  
 G-2956  
 TOWNSHIP

M.N.R. ADMINISTRATIVE DISTRICT  
**ESPANOLA**  
 MINING DIVISION  
**SUDBURY**  
 LAND TITLES/REGISTRY DIVISION  
**SUDBURY**

**DURBAN**



**AREAS WITHDRAWN FROM DISPOSITION**

MRO - Mining Rights Only  
 SRO - Surface Rights Only  
 M + S - Mining and Surface Rights

Description	Order No.	Date	Disposition	File
SEC. 36/80	W1/83	28/3/83	M + S	136714

**SYMBOLS**

- Boundary
  - Township, Meridian, Baseline
- Road allowance; surveyed
- shoreline
- Lot/Concession; surveyed
- unsurveyed
- Parcel; surveyed
- unsurveyed
- Right-of-way; road
- railway
- utility
- Reservation
- Cliff, Pit, Pile
- Contour
- Interpolated
- Approximate
- Depression
- Control point (horizontal)
- Flooded land
- Mine head frame
- Pipeline (above ground)
- Railway; single track
- double track
- abandoned
- Road; highway, county, township
- access
- trail, bush
- Shoreline (original)
- Transmission line
- Wooded area

**DISPOSITION OF CROWN LANDS**

- Patent
  - Surface & Mining Rights
  - Surface Rights Only
  - Mining Rights Only
- Lease
  - Surface & Mining Rights
  - Surface Rights Only
  - Mining Rights Only
- Licence of Occupation
- Order-in-Council
- Cancelled
- Reservation
- Sand & Gravel

THE INFORMATION THAT APPEARS ON THIS MAP HAS BEEN COMPILED FROM VARIOUS SOURCES, AND ACCURACY IS NOT GUARANTEED. THOSE WISHING TO STAKE MINING CLAIMS SHOULD CONSULT WITH THE MINING RECORDER, MINISTRY OF NORTHERN DEVELOPMENT AND MINES, FOR ADDITIONAL INFORMATION ON THE STATUS OF THE LANDS SHOWN HEREON.

DATE OF ISSUE  
**JUL 3 1 1986**  
 SUDBURY  
 MINING RECORDER'S OFFICE