

AS11-9

AREAS WITHDRAWN FROM DISPOSITION

- M.R.O. - MINING RIGHTS ONLY
- S.R.O. - SURFACE RIGHTS ONLY
- M+S. - MINING AND SURFACE RIGHTS

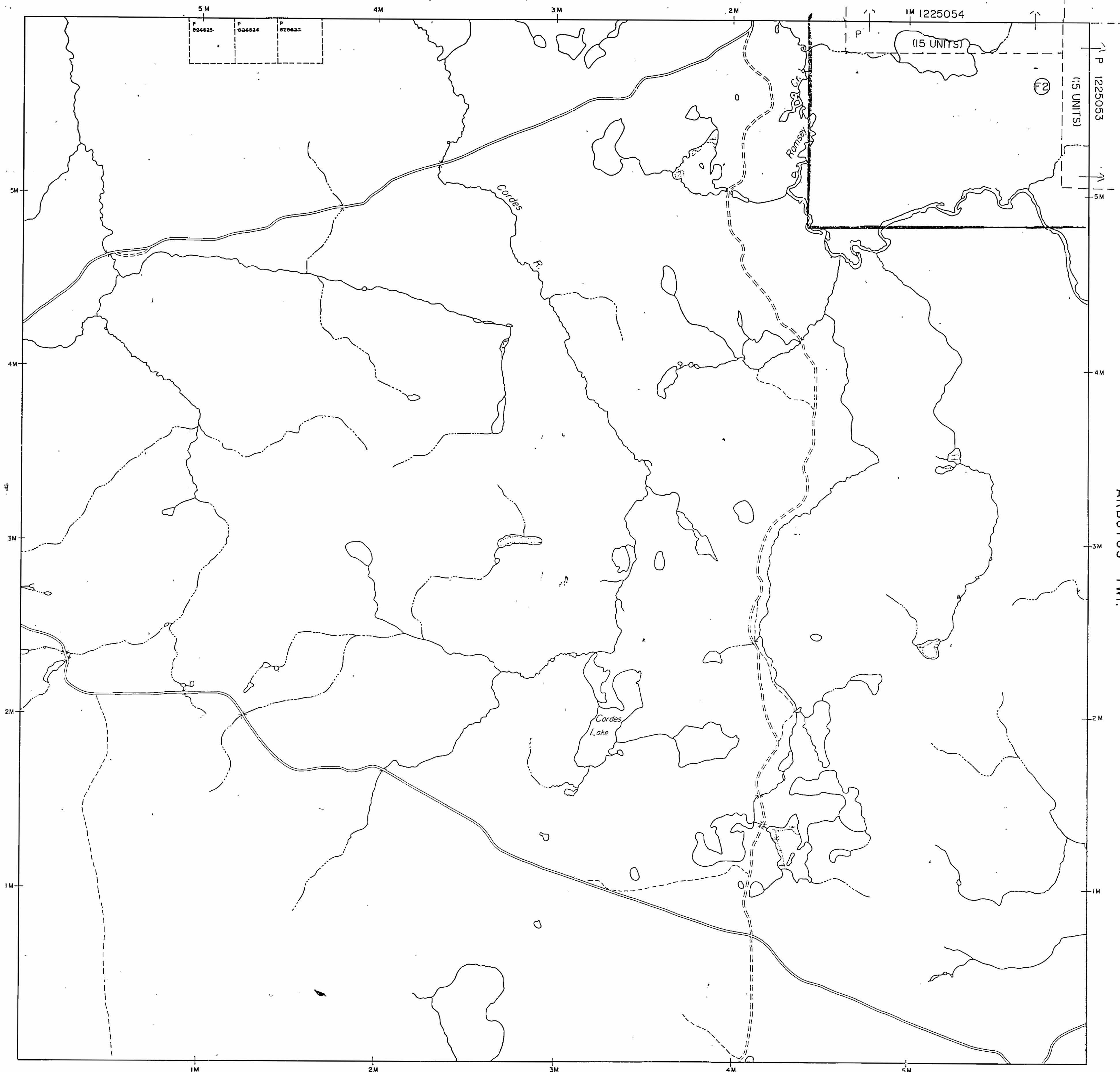
Description	Order No.	Date	Disposition	File

THIS TWP. IS SUBJECT TO FOREST ACTIVITY IN 1974/75
 FURTHER INFORMATION ON FILE. 1995/96

LINGAF TWP

EDITH TWP.

OSWAY TWP.



CAREW TWP.

ARBUTUS TWP.

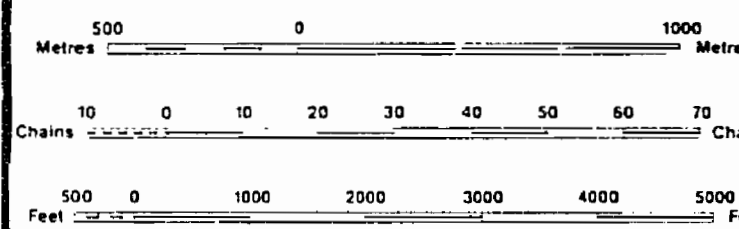
LEGEND

- HIGHWAY AND ROUTE No.
- OTHER ROADS
- TRAILS
- SURVEYED LINES:
 - TOWNSHIPS, BASE LINES, ETC.
 - LOTS, MINING CLAIMS, PARCELS, ETC.
- UNSURVEYED LINES:
 - LOT LINES
 - PARCEL BOUNDARY
 - MINING CLAIMS ETC.
- RAILWAY AND RIGHT OF WAY
- UTILITY LINES
- NON PERENNIAL STREAM
- FLOODING OR FLOODING RIGHTS
- SUBDIVISION OR COMPOSITE PLAN.
- RESERVATIONS
- ORIGINAL SHORELINE
- MARSH OR MUSKEG
- MINES
- TRAVERSE MONUMENT

DISPOSITION OF CROWN LANDS

TYPE OF DOCUMENT	SYMBOL
PATENT, SURFACE & MINING RIGHTS	
" SURFACE RIGHTS ONLY	
" MINING RIGHTS ONLY	
LEASE, SURFACE & MINING RIGHTS	
" SURFACE RIGHTS ONLY	
" MINING RIGHTS ONLY	
LICENCE OF OCCUPATION	
ORDER IN COUNCIL	
RESERVATION	
CANCELLED	
SAND & GRAVEL	

NOTE: MINING RIGHTS IN PARCELS PATENTED PRIOR TO MAY 6, 1912, VESTED IN ORIGINAL PATENTEE BY THE PUBLIC LANDS ACT, R.S.O. 1970, CHAP. 380, SEC. 63, SUBSEC. 1.



SCALE 1:20 000

TOWNSHIP
FINGAL
 M.N.R. ADMINISTRATIVE DISTRICT
CHAPLEAU
 MINING DIVISION
PORCUPINE
 LAND TITLES / REGISTRY DIVISION
SUDBURY Received Sept. 15/86

Ministry of Natural Resources Ontario
 Ministry of Northern Development and Mines

Date: AUGUST, 1986. Number: **G-1124**
 C.K. L.F.

DATE OF ISSUE

MAY 11 1986

PROVINCIAL RECORDING OFFICE - SUDBURY

THE INFORMATION THAT APPEARS ON THIS MAP HAS BEEN COMPILED FROM VARIOUS SOURCES, AND ACCURACY IS NOT GUARANTEED. THOSE WISHING TO STAKE MINING CLAIMS SHOULD CONSULT WITH THE MINING RECORDER, MINISTRY OF NORTHERN DEVELOPMENT AND MINES, FOR ADDITIONAL INFORMATION ON THE STATUS OF THE LANDS SHOWN HEREON.

AS11-9

AS11-9

PWT JAGM17

AS11-9

AS11-C

QWT JAGNIF

AS11-C

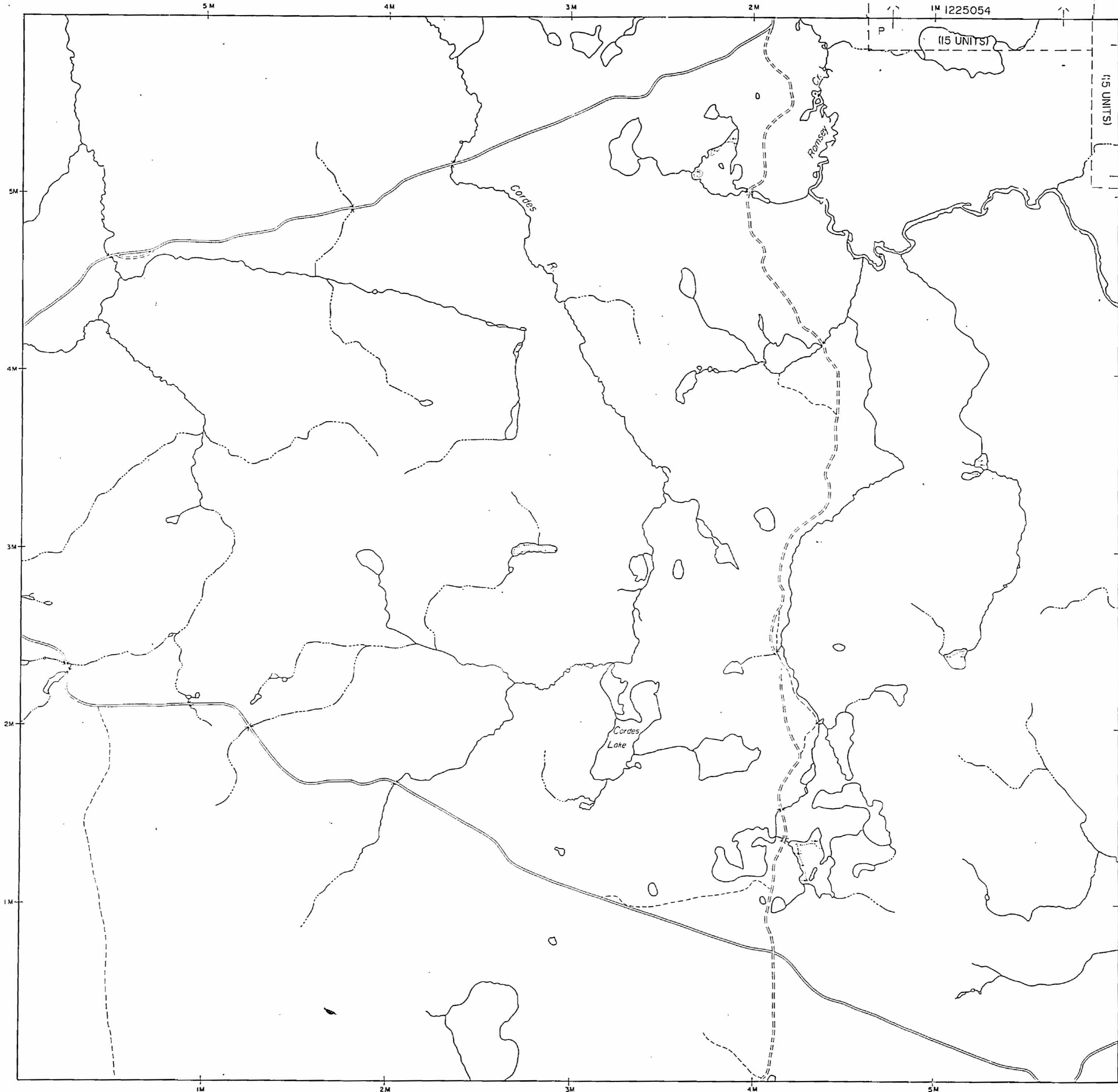
AREAS WITHDRAWN FROM DISPOSITION

- M.R.O. - MINING RIGHTS ONLY
- S.R.O. - SURFACE RIGHTS ONLY
- M.S. - MINING AND SURFACE RIGHTS

Description	Order No.	Date	Disposition	File

THIS TWP. IS SUBJECT TO FOREST ACTIVITY IN 1974/85
 FURTHER INFORMATION ON FILE 1995/96

THE INFORMATION THAT APPEARS ON THIS MAP HAS BEEN COMPILED FROM VARIOUS SOURCES, AND ACCURACY IS NOT GUARANTEED. THOSE WISHING TO STAKE MINING CLAIMS SHOULD CONSULT WITH THE MINING RECORDER, MINISTRY OF NORTHERN DEVELOPMENT AND MINES, FOR ADDITIONAL INFORMATION ON THE STATUS OF THE LANDS SHOWN HEREON.



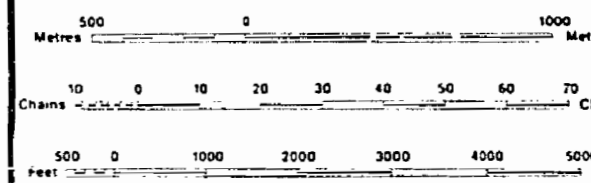
LEGEND

- HIGHWAY AND ROUTE No.
- OTHER ROADS
- TRAILS
- SURVEYED LINES
- TOWNSHIPS, BASE LINES, ETC.
- LOTS, MINING CLAIMS, PARCELS, ETC.
- UNSURVEYED LINES
- LOT LINES
- PARCEL BOUNDARY
- MINING CLAIMS ETC.
- RAILWAY AND RIGHT OF WAY
- UTILITY LINES
- NON PERENNIAL STREAM
- FLOODING OR FLOODING RIGHTS
- SUBDIVISION OR COMPOSITE PLAN
- RESERVATIONS
- ORIGINAL SHORELINE
- MARSH OR MUSKEG
- MINES
- TRAVERSE MONUMENT

DISPOSITION OF CROWN LANDS

TYPE OF DOCUMENT	SYMBOL
PATENT, SURFACE & MINING RIGHTS	○
" SURFACE RIGHTS ONLY	○
" MINING RIGHTS ONLY	○
LEASE, SURFACE & MINING RIGHTS	○
" SURFACE RIGHTS ONLY	○
" MINING RIGHTS ONLY	○
LICENCE OF OCCUPATION	○
ORDER IN COUNCIL	○
RESERVATION	○
CANCELLED	○
SAND & GRAVEL	○

NOTE: MINING RIGHTS IN PARCELS PATENTED PRIOR TO MAY 6, 1913, VESTED IN ORIGINAL PATENTEE BY THE PUBLIC LANDS ACT, R.S.O. 1970, CHAP. 380, SEC. 65, SUBSEC. 1.



SCALE 1:20 000

TOWNSHIP FINGAL

M.N.R. ADMINISTRATIVE DISTRICT
 CHAPLEAU
 MINING DIVISION
 PORCUPINE
 LAND TITLES / REGISTRY DIVISION

SUDBURY Received Sept. 15/86

Ministry of Natural Resources
 Ontario
 Ministry of Northern Development and Mines

DATE AUGUST, 1986
 CH. L.P.
 Number G-1124

AS11-C

QWT JAGNIF

AS11-C

FINGAL

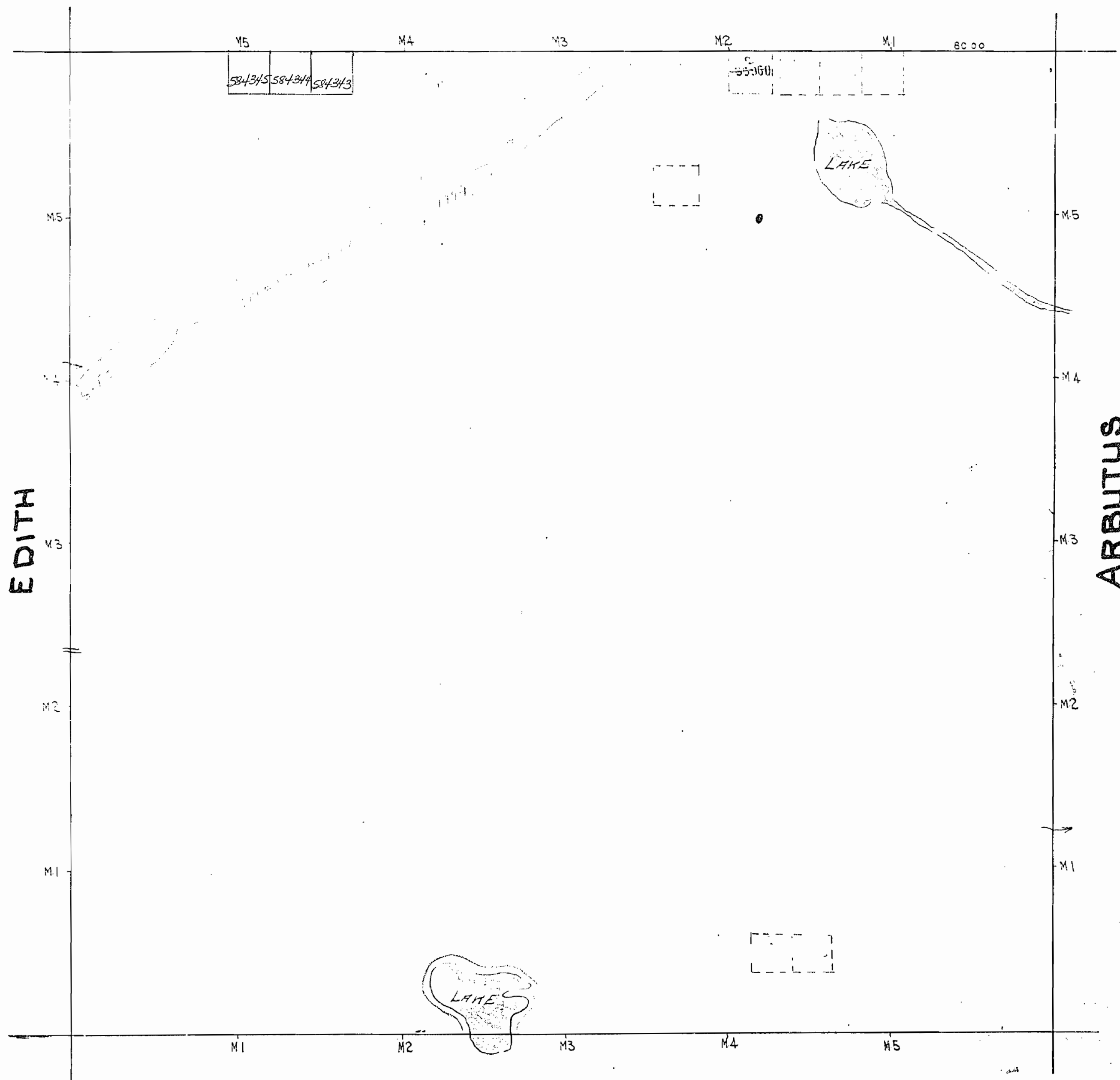
193

DISTRICT OF SUDBURY

Scale ~ 40 Chains ≈ 1 Inch

OSWAY

400' Res.



EDITH

ARBUTUS

CAREW

PORCUPINE MINING DIVISION

Scale ~ 40 Chains ~ 1 Inch

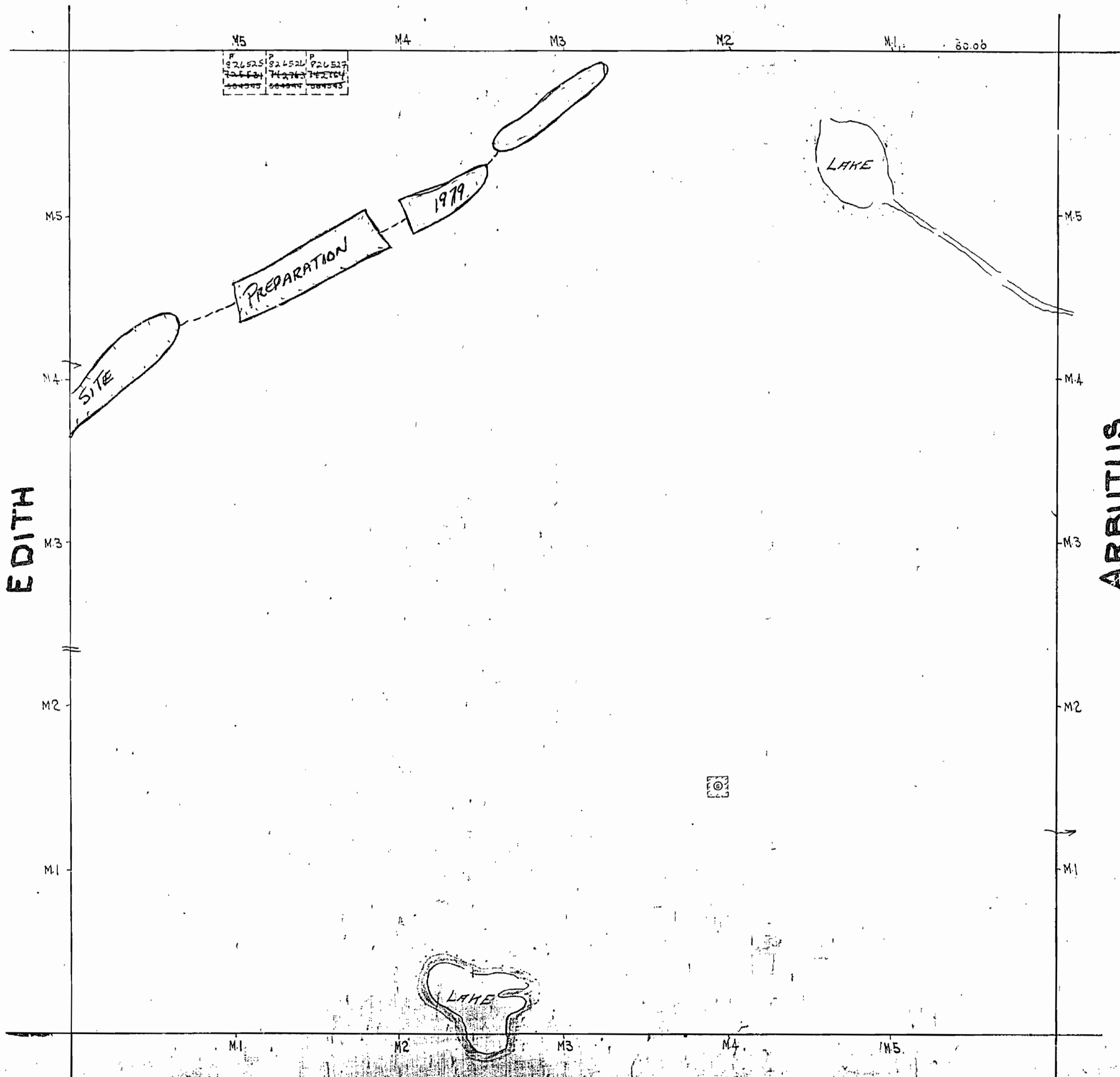
OSWAY

61

NOTE

400' Surface Rights Reservation
around all Lakes and Rivers.

© QUARRY PERMIT



EDITH

ARBUTUS

Notes
400' Reserve to the Dept. of Lands
House

CAREW