

ONTARIO
DEPARTMENT OF MINES
AND NORTHERN AFFAIRS

THACKERAY TWP M-394

ABITIBI INDIAN RESERVE No. 70

McCOOL TWP.
M-365

RAND TWP. M-383

GARRISON

DISTRICT OF
COCHRANE

LARDER LAKE
MINING DIVISION

SCALE: 1-INCH 40 CHAINS

DISPOSITION OF CROWN LANDS

- PATENT, SURFACE AND MINING RIGHTS
- " , SURFACE RIGHTS ONLY
- " , MINING RIGHTS ONLY
- LEASE, SURFACE AND MINING RIGHTS
- " , SURFACE RIGHTS ONLY
- " , MINING RIGHTS ONLY
- LICENCE OF OCCUPATION

- ROADS
- IMPROVED ROADS
- KING'S HIGHWAYS
- RAILWAYS
- POWER LINES
- MARSH OR MUSKEG
- MINES
- CANCELLED

NOTES

400' surface rights reservation along the shores of all lakes & rivers.

PLAN NO. **M-349**

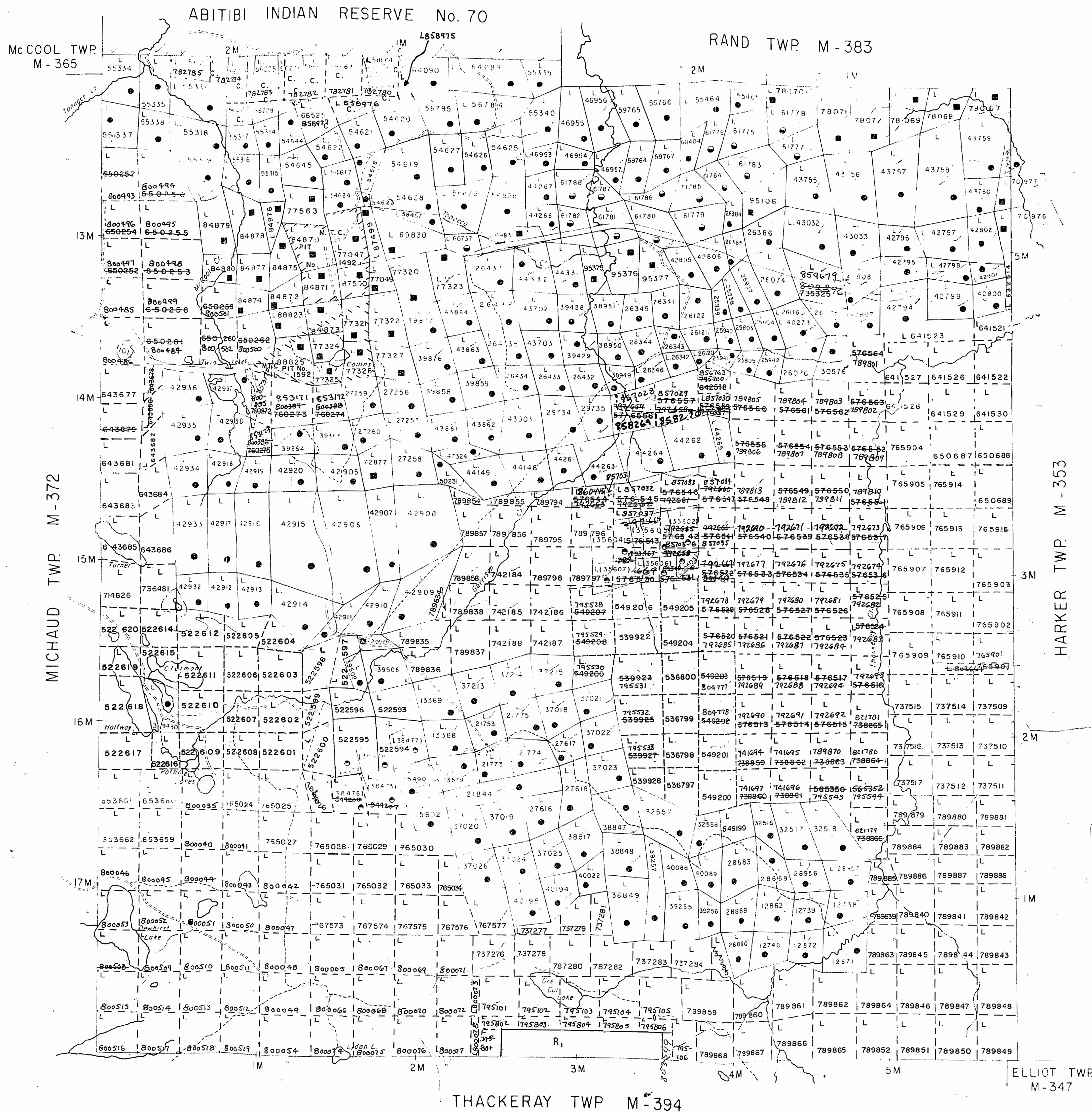
ONTARIO
MINISTRY OF NATURAL RESOURCES
SURVEYS AND MAPPING BRANCH

MICHAUD TWP. M-372

HARKER TWP. M-353

THACKERAY TWP. M-394

ELLIOT TWP.
M-347



THE TOWNSHIP
OF
GARRISON

DISTRICT OF
COCHRANE

LARDE LAKE
MINING DIVISION

SCALE: 1-INCH 40 CHAINS

DISPOSITION OF CROWN LANDS

- PATENT, SURFACE AND MINING RIGHTS
- " SURFACE RIGHTS ONLY
- " MINING RIGHTS ONLY
- LEASE, SURFACE AND MINING RIGHTS
- " SURFACE RIGHTS ONLY
- " MINING RIGHTS ONLY
- LICENCE OF OCCUPATION
- ROADS
- IMPROVED ROADS
- KING'S HIGHWAYS
- RAILWAYS
- POWER LINES
- MARSH OR MUSKEG
- MINES
- CANCELLED

NOTES

- 400' surface rights reservation along the shores of all lakes & rivers.
- (R) Mining and surface rights withdrawn from prospecting, staking out, sale or lease Sec 36, The Mining Act, R.S.O. 1980 Order, N.R.W. 63/83 Dec 2, 1983, 9:30 am

PLAN NO. **M-349**
ONTARIO
MINISTRY OF NATURAL RESOURCES
SURVEYS AND MAPPING BRANCH

Apple under Public Health Act - Proposed
hydro line.

N.R.W. G3/83 RESCUED MARCH 29/85, AS OF JANUARY 28, 1985
DECLARED A PROVINCIAL PARK

ABIT P. INDIAN RESERVE No 10

RAND TOWNSHIP

LEDE. IC

[illegible]

DISPOSITION : 100

[illegible]


SCALE 1:40 000

Application for 5 Rights

THE INFORMATION THAT APPEARS ON THIS MAP HAS BEEN COMPILED FROM VARIOUS SOURCES AND ACCURACY IS NOT GUARANTEED. THOSE WISHING TO STAKE MINING CLAIMS SHOULD CONSULT WITH THE MINING RECORDER, MINISTRY OF NORTHERN DEVELOPMENT AND MINES, FOR ADDITIONAL INFORMATION ON THE STATUS OF THE LANDS SHOWN HEREON.

TOWNSHIP
GARRISON

M.N.R. ADMINISTRATIVE DISTRICT
KIRKLAND LAKE
MINING DIVISION
LARDER LAKE
LAND TITLES / REGISTRY DIVISION
COCHRANE


 Ministry of Natural Resources Ministry of Northern Development and Mines

Date: OCTOBER 1966 Number: G-3638

COPY OF THIS G-PLAN WAS
ARCHIVED ON MAY 13/93

THACHERAY TOWNSHIP

GARRISON
G-3638
May 13/93

G-3638

AREA WITHIN
M.R.O. - MINING RIGHTS ONLY
S.R.O. - SURFACE RIGHTS ONLY
M.S. - MINING AND SURFACE RIGHTS

Applicant: Under Public Lands Act - Proposed
hydro dam
N.R.W. 63/83 RESOLVED MARCH 29/85, AS OF JANUARY 28, 1985
DECLARED A PROVINCIAL PARK

ANTHONY INDIAN RESERVE No. 70

RAND TOWNSHIP

MICHAUD TOWNSHIP

HACKETT TOWNSHIP

THACKERAY TOWNSHIP

LEGEND

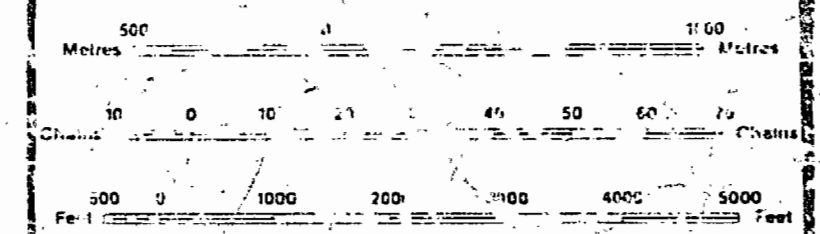
- HIGHWAY AND ROAD
- OTHER ROAD
- TRAILS
- SURVEYED LINES
- TOWNSHIP, BASE LINES, ETC.
- LOTS, MINING CLAIMS, PARCELS, ETC.
- UNSURVEYED LINES
- LOT LINES
- PARCELS BOY LANE
- MINING CLAIMS
- RAILWAY AND RIGHT OF WAY
- UTL LINES
- NON-THERMAL STREAM
- FLOODING OR FLOODING RIGHTS
- SUBDIVISION OR COMPOSITE PLAN
- RESERVATIONS
- ORIGINAL SHORELINE
- WATER OF MURDER
- MADE
- TRAIL
- MOBILE

DISPOSITION OF

TYPE OF DOCUMENT

- PATENT, SURFACE & MINING RIGHTS
- SURFACE RIGHTS ONLY
- MINING RIGHTS ONLY
- LEASE, SURFACE & MINING RIGHTS
- MINING RIGHTS
- LICENSE OF OCCUPANCY
- PROVINCIAL RESERVE
- CANCELLED
- SAND - G. FL.

NOTE: MINING RIGHTS IN PARCELS PATENTED PRIOR TO MAY 6, 1913, VESTED IN ORIGINAL PATENTEE BY THE PUBLIC LANDS ACT, R.S.C. 1912, CHAP. 22, SEC. 63, SUBSEC. 1.



SCALE 1:20 000

Application for S. Rights
under Public Lands Act

THE INFORMATION THAT
APPEARS ON THIS MAP
HAS BEEN COMPILED
FROM VARIOUS SOURCES,
AND ACCURACY IS NOT
GUARANTEED. THOSE
WISHING TO STAKE
MINING CLAIMS SHOULD
CONSULT WITH THE
RECORDS, MINISTRY OF
NORTHERN DEVELOPMENT
AND MINES, FOR ADDI-
TIONAL INFORMATION
ON THE STATUS OF THE
LANDS SHOWN HEREON.

TOWNSHIP
GARRISON

M.N.R. ADMINISTRATIVE DISTRICT
KIRKLAND LAKE
MINING DIVISION
LARDER LAKE
LAND TITLES / REGISTRY DIVISION
COCHRANE

Ministry of Natural Resources
Ontario
Ministry of Northern Development and Mines

DATE: SEPTEMBER, 1986
G-3638

COPY OF THIS MYLAR
ARCHIVED MAY 13/93
ARCHIVED MAY 17, 1995

349

GARRISON

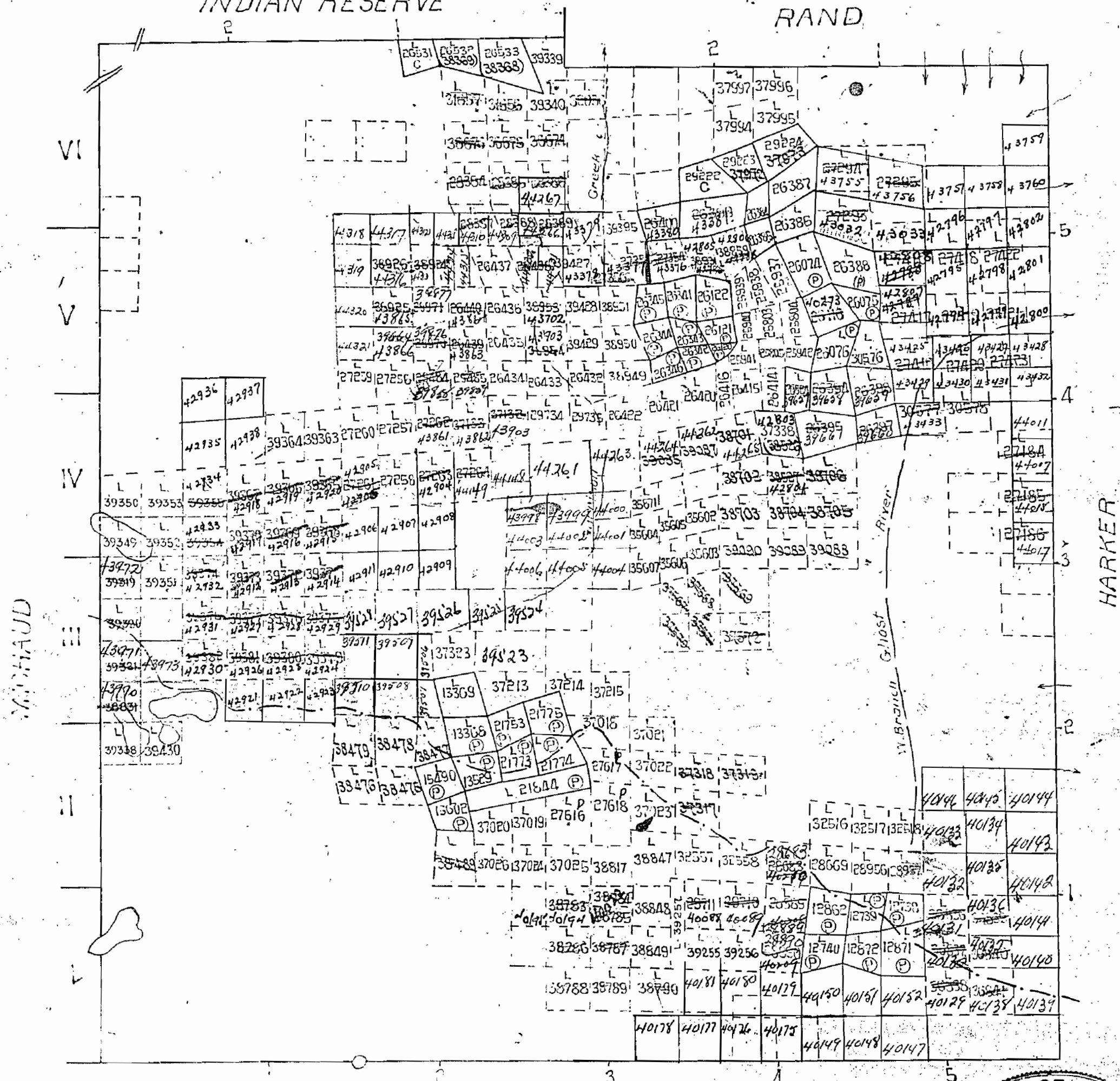
LARDER LAKE MINING DIVISION

M-349

scale. 40 chains = 1 in.

ABITIBI
INDIAN RESERVE

RAND



HARKER

TRACKERY

DATE OF ISSUE
JUL 25 1940

349

ABITIBI INDIAN RESERVE No. 70

McCOOL TWP.
M-365

RAND TWP. M-383

THE TOWNSHIP
OF
GARRISON

DISTRICT OF
COCHRANELARDER LAKE
MINING DIVISION

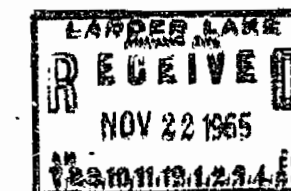
SCALE: 1-INCH 40 CHAINS

LEGEND

PATENTED LAND (P)
CROWN LAND SALE (C.S.)
LEASES (L)
LOCATED LAND (Loc.)
LICENSE OF OCCUPATION (L.O.)
MINING RIGHTS ONLY (M.R.O.)
SURFACE RIGHTS ONLY (S.R.O.)
ROADS
IMPROVED ROADS
KING'S HIGHWAYS
RAILWAYS
POWER LINES
MARSH OR MUSKEG
MINES
CANCELLED

NOTES

400' Surface Rigs Reservation around all lakes
& rivers.

PLAN NO. **M-349**

DEPARTMENT OF MINES

—ONTARIO—

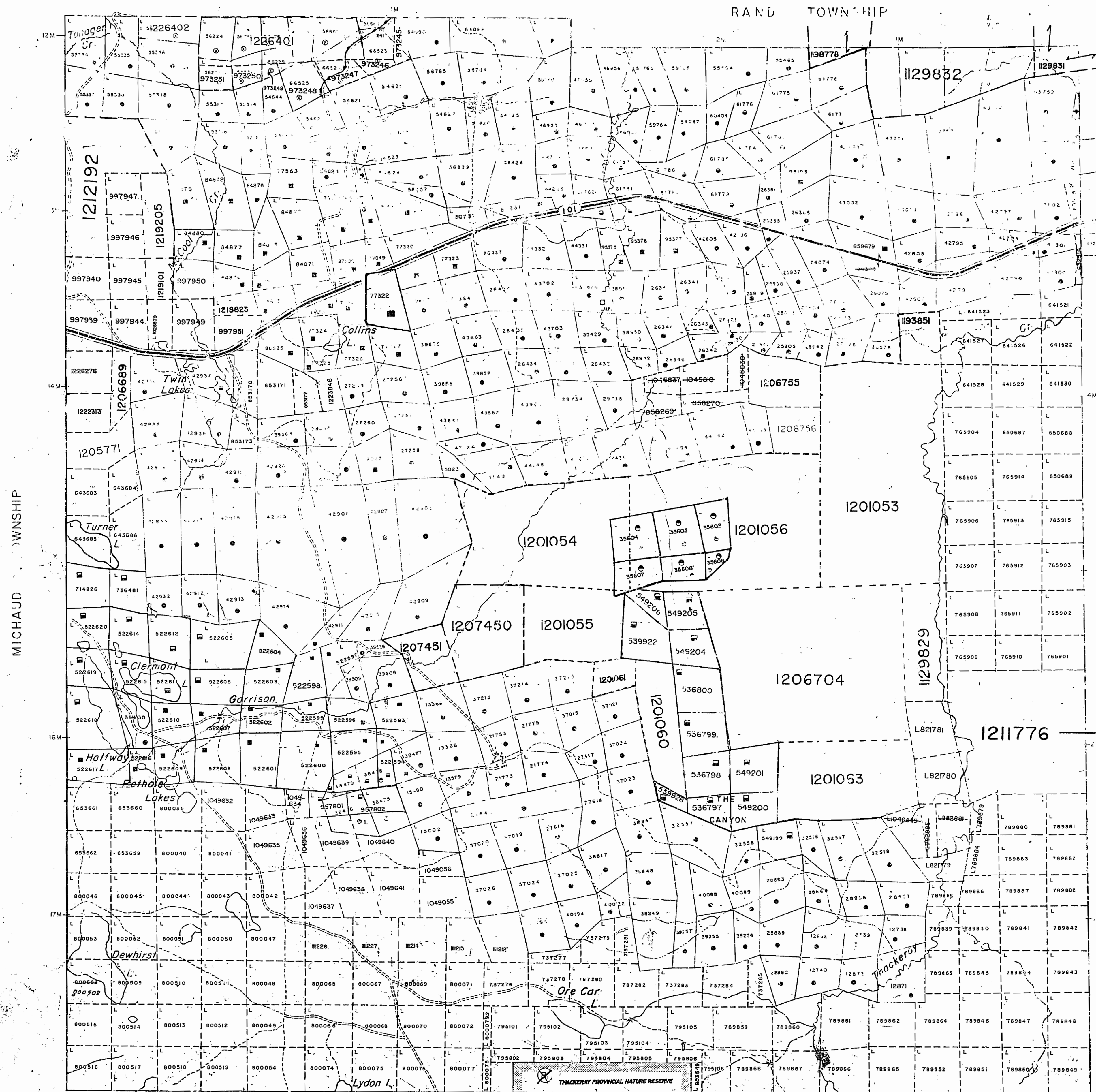
MICHAUD TWP. M-372

HARKER TWP. M-353

ELLIOT TWP.
M-347

THACKERAY TWP. M-394

NR.W. G3/83 RESCINDED MARCH 29/85, AS OF JANUARY 28, 1985
DECLARED A PROVINCIAL PARK



THACKERAY TOWNSHIP

~~COPY OF THIS MYLAR~~
~~ARCHIVED MAY 13/93~~
ARCHIVED MAY 17, 1995

LEADS

HIGHWAY, SOUTHERN, AND
OTHER LOCATIONS
TRUCKS
SURVEYED LINES
OWNERS, BUS, CARS, ETC.
LOTS, MINING, CEMENT, PARKING, ETC.
UNSURVEYED LINES
LINE LINES
CITY, BOULEVARD
MOUNTAIN, COUNTRY
CAMP, ROAD, RAILWAY
HILLS, RIVERS
RIVER, COUNTRY, AREA
COUNTRY, FLOODING, RIGHTS
SUBJECT, OR COMPOSITE PLAN
REDUCTIONS
ORIGINAL SHORELINE
HILLS, MOUNTAIN
MOUNTAIN
TRAIL, MOUNTAIN

DISPOSITION OF

TYPE OF DOCUMENT

0. TENT, SURFACE & MINING RIGHTS
 " SURFACE RIGHTS ONLY
 MINING RIGHTS ONLY
 LEASE
 " SURFACE & MINING RIGHTS
 " SURFACE RIGHTS ONLY
 " MINING RIGHTS ONLY

LICENSE OF _____
 ORDERING _____
 RESERVATION _____
 CANCELLED _____
 SAND FILL _____

NOTE: MINING RIGHTS IN PARCELS PATENTED PRIOR TO MAY 1913, VESTED IN ORIGINAL PATENTEE BY THE PUBLIC LANDS ACT, P.L. 61-617, CHAP. 361, SEC. 63, SUBSEC.

Figure 1 consists of two horizontal bar charts. The top chart is for Fe I and the bottom chart is for Fe II. Both charts have a horizontal axis with labels 0, 500, and 1000. The vertical axis for Fe I has labels 10, 100, and 500. The vertical axis for Fe II has labels 10, 50, and 100. The bars represent the distribution of lines, with the highest bar at 1000 and a secondary bar at 500.


SCALE 1:40 00

Application for S. Rights

THE INFORMATION THAT APPEARS ON THIS MAP HAS BEEN COMPILED FROM VARIOUS SOURCES AND ACCURACY IS NOT GUARANTEED. THOSE WISHING TO STAKE MINING CLAIMS SHOULD CONSULT WITH THE MINING RECORDER, MINISTRE OF NORTHERN DEVELOPMENT AND MINES, FOR ADDITIONAL INFORMATION ON THE STATUS OF THE LANDS SHOWN HEREON.

10 TOWNSHIP
GARRISON
M.N.R. ADMINISTRATIVE DISTRICT
KIRKLAND LAKE
MINING DIVISION
LARDER LAKE
LAND TITLES / REGISTRY DIVISION
COCHRANE

DATE OF ISS
APR 20 1998
PROVINCIAL RECORDING
OFFICE - SUDBURY


 Ministry of Natural Resources Ministry of Northern Development and Mines

G-3638

GARRISON

LARDER LAKE MINING DIVISION

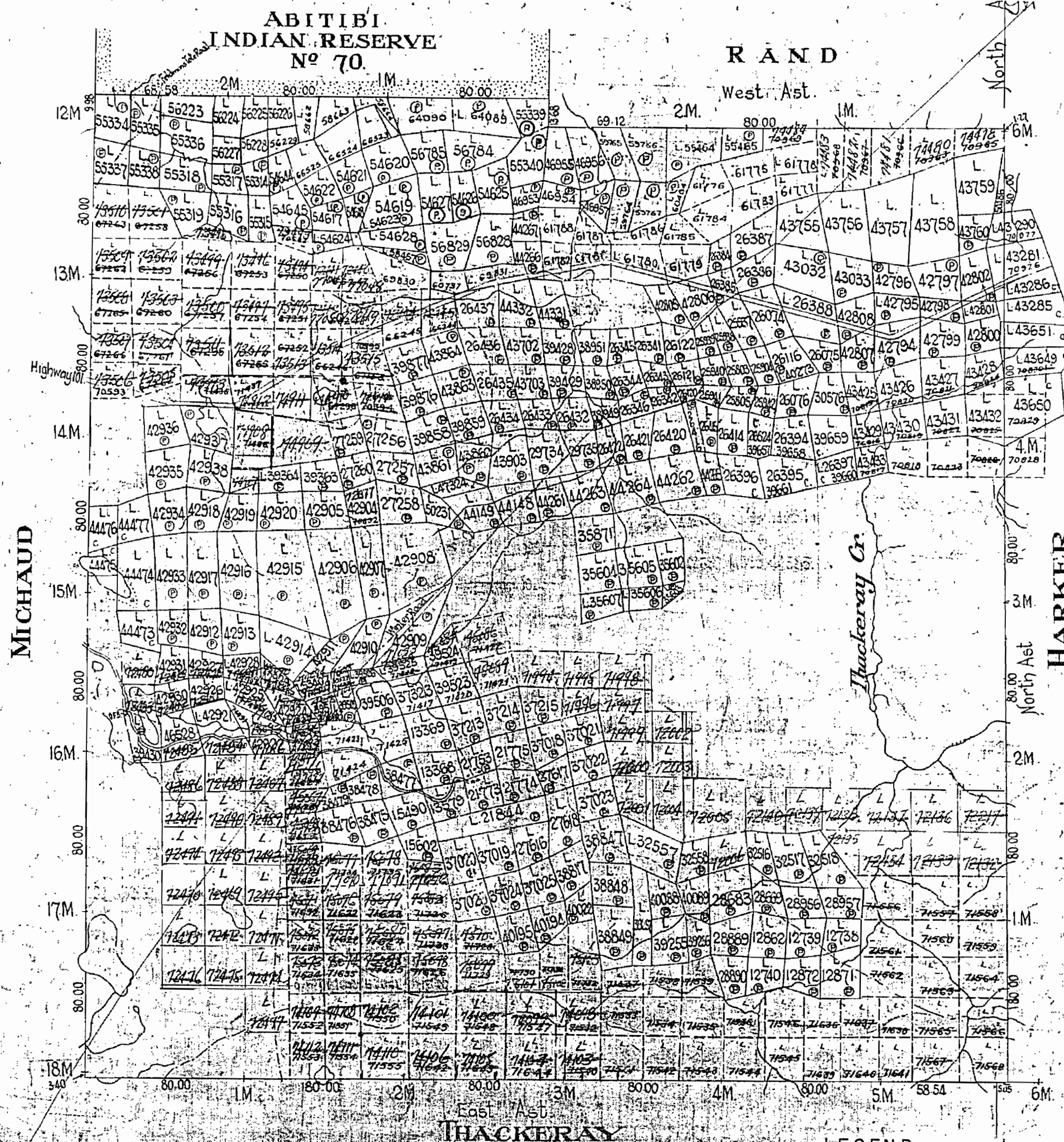
DISTRICT OF COCHRANE

Scale-40 Chains - 1 Inch

M-349

MINING RECORDER
RECEIVED
JAN 14 1960
KIRKLAND LAKE - ONT

Asst. District Eng 10/6/23.



LEGEND

CANCELLED PATENTED LAND CROWN LAND SALE LEASES LOCATED LAND LICENSE OF OCCUPATION MINING RIGHTS ONLY SURFACE RIGHTS ONLY

GARRISON

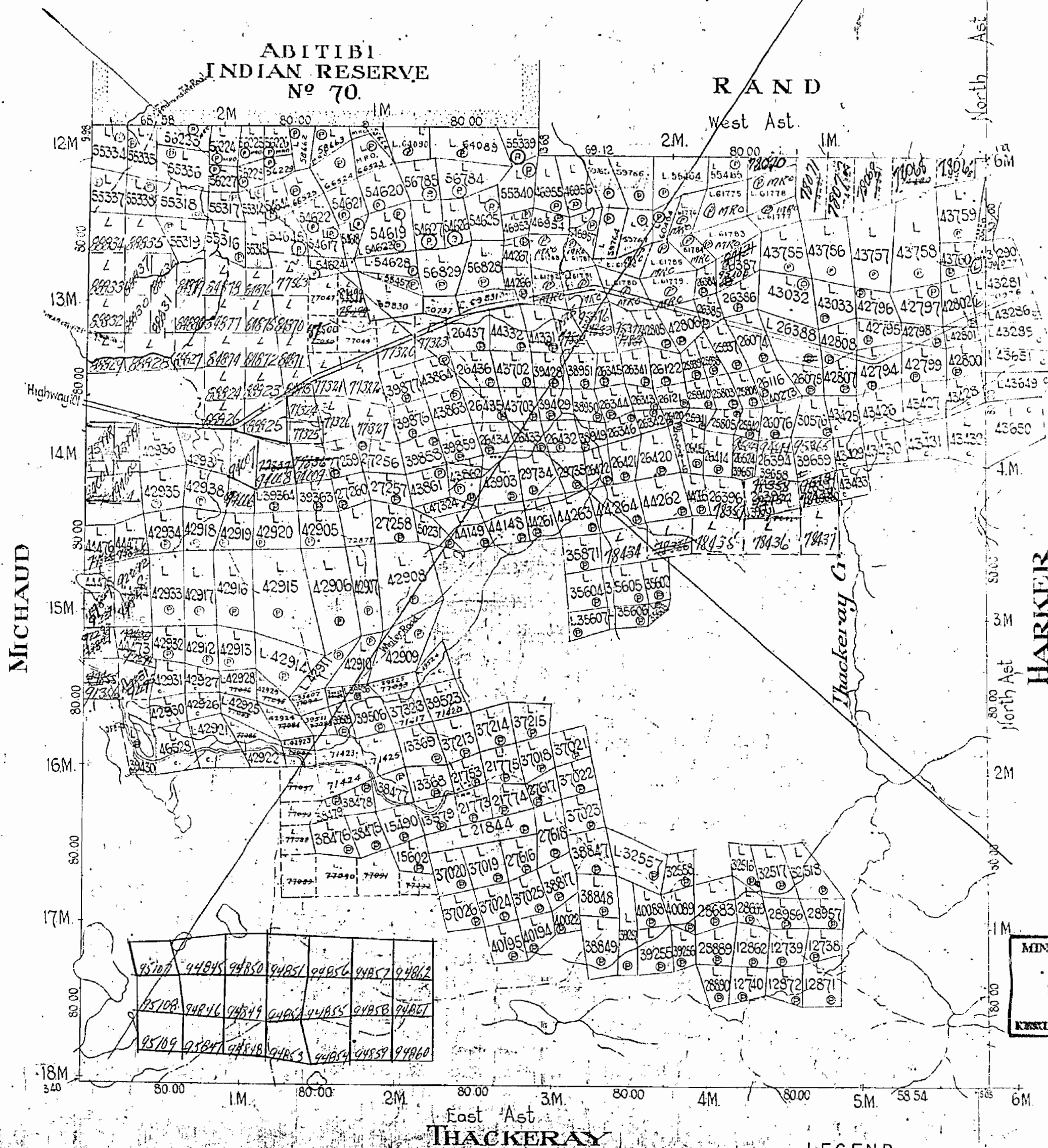
LARDER LAKE MINING DIVISION

DISTRICT OF COCHRANE

Scale: 40 Chains - 1 Inch

Replaced as of
Nov. 27/65

41-547



MINING RECORDS
RECEIVED
DEC 10 1962
NORSTLAND LAKES - C-42

400' Surface rights reservation around all lakes and rivers

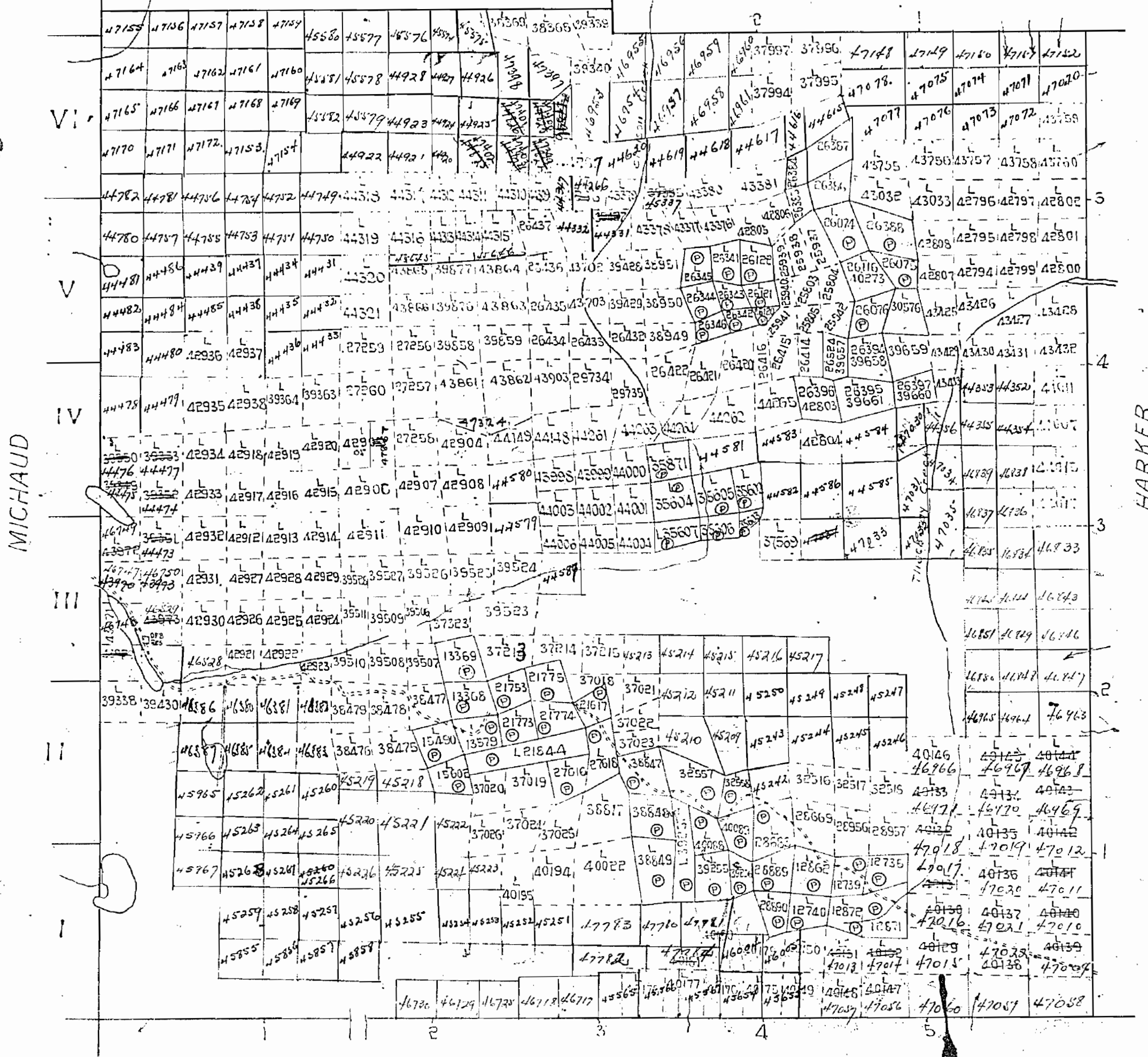
LEGEND

CANCELLED
PATENTED LAND
CROWN LAND SALE
LEASES
LOCATED LAND
LICENSES OF OCCUP
MINING RIGHTS ONLY
SURFACE RIGHTS ONLY

M-349

scale 40 chains = 1 inch

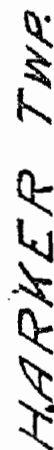
RAND



WAGNER

M-349

R AND TWA.



THACKERY TWP.

Scale: 40 Chains - 1 Inch

M-349

ABITIBI
INDIAN RESERVE
No 70.

RAND

West Ast.

North Ast:

MICHAUD

HARKER

17M
REPLACED
80.00

East Ast
THACKERAY

349

GARRISON

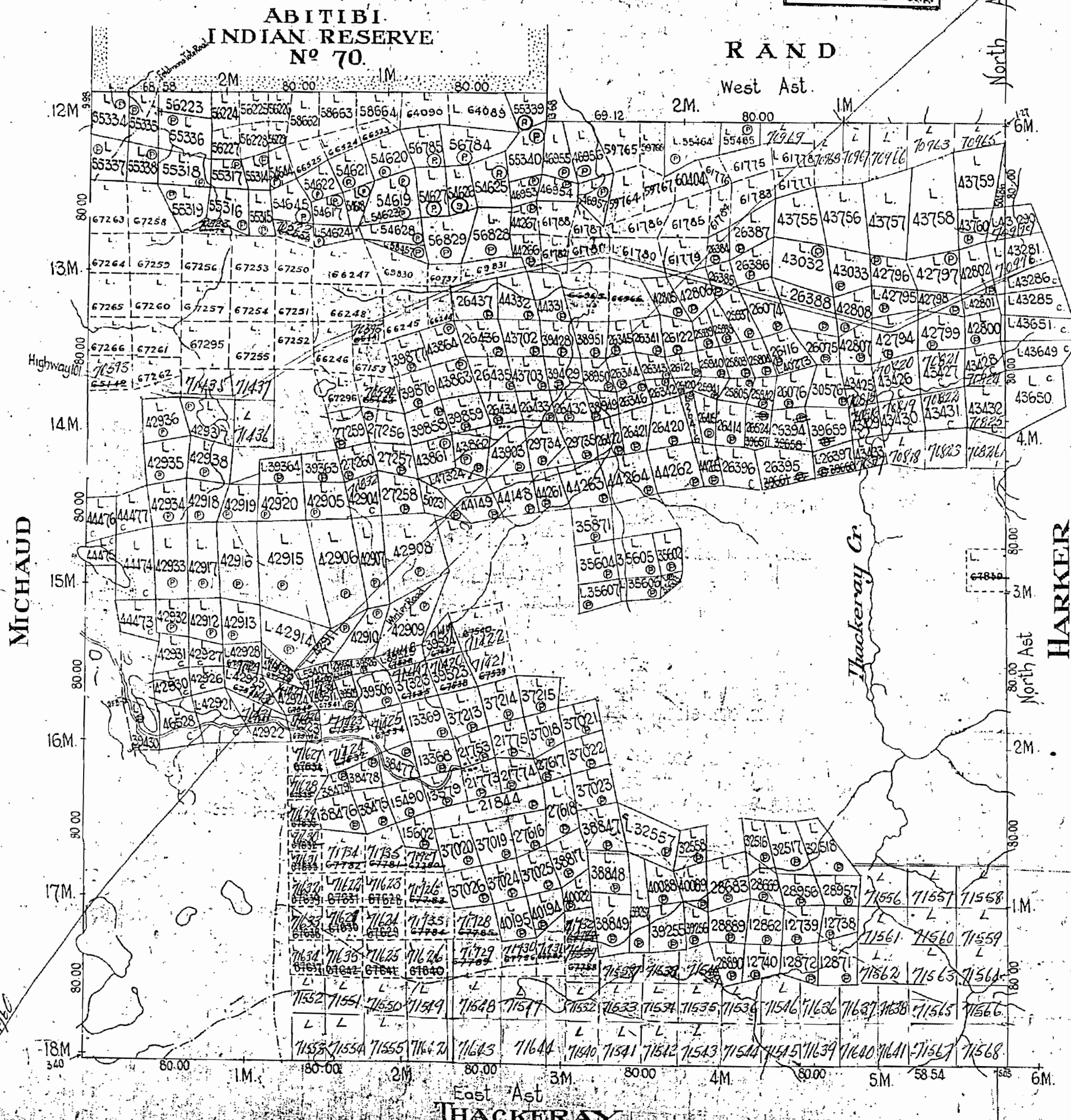
LARDER LAKE MINING DIVISION

DISTRICT OF COCHRANE

Scale: 40 Chains - 1 inch

M-349

MINING RECORDER
RECEIVED
APR 13 1959
KIRKLAND LAKE - ONT.



LEGEND

CANCELLED
PATENTED LAND
CROWN LAND SALE
LEASES
LOCATED LAND
LICENSE OF OCCUPATION
MINING RIGHTS ONLY
SURFACE RIGHTS ONLY

C.
C.S.
C.O.
L.O.
M.R.O.
S.R.O.

GARRISON

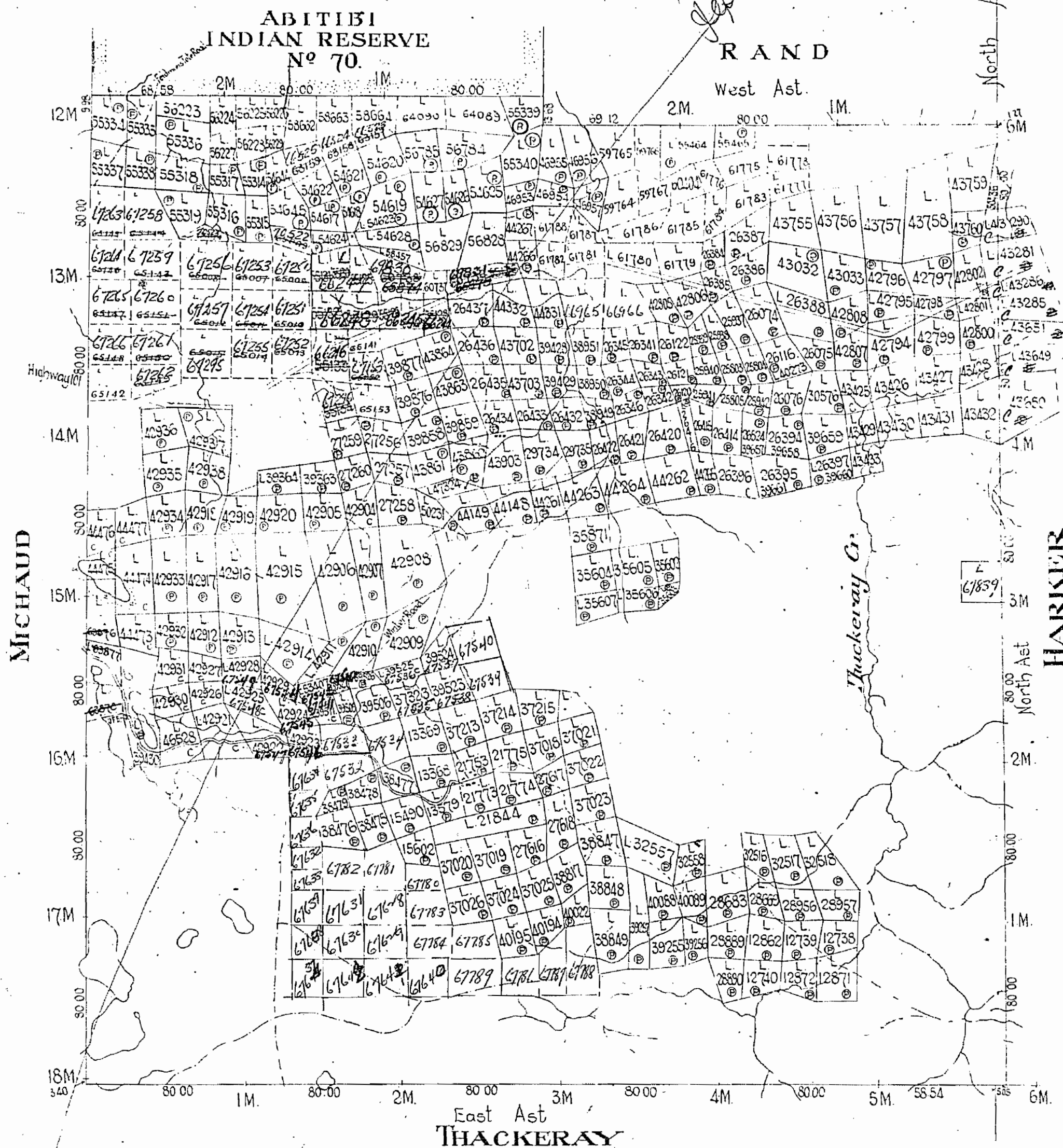
LARDER LAKE MINING DIVISION

DISTRICT OF COCHRANE

Scale: 40 Chains = 1 Inch

M-349

Replaced April 13/59



MINING RECORDER
RECEIVED
APR 26 1957
SWASTIKA - ONT.