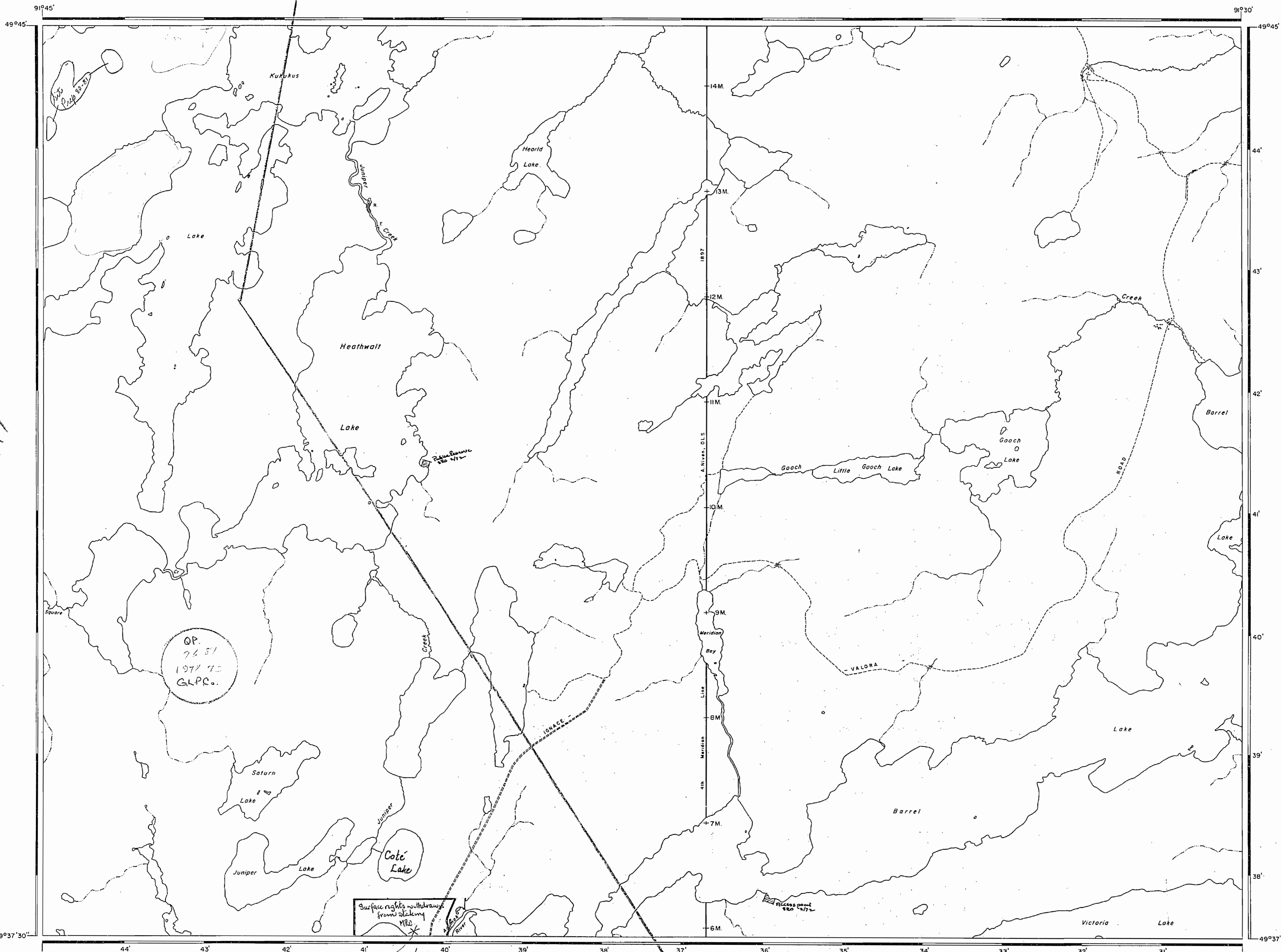


M-3198



M-1997

Resurveyed for
Heathwalt
Site 43 on 10/76

Paguchi Lake Area - M.2893

HEATHWALT 2894

AREA OF
HEATHWALT LAKE

DISTRICT OF
KENORA

KENORA
MINING DIVISION

SCALE: 1-INCH = 40 CHAINS

LEGEND

PATENTED LAND	Ⓟ
CROWN LAND SALE	C.S.
LEASES	Ⓛ
LOCATED LAND	Loc.
LICENSE OF OCCUPATION	L.O.
MINING RIGHTS ONLY	M.R.O.
SURFACE RIGHTS ONLY	S.R.O.
ROADS	—
IMPROVED ROADS	—
KING'S HIGHWAYS	—
RAILWAYS	—
POWER LINES	—
MARSH OR MUSKEG	—
MINES	Ⓜ
CANCELLED	C.

NOTES

400' Surface Rights Reservation around all lakes and rivers.

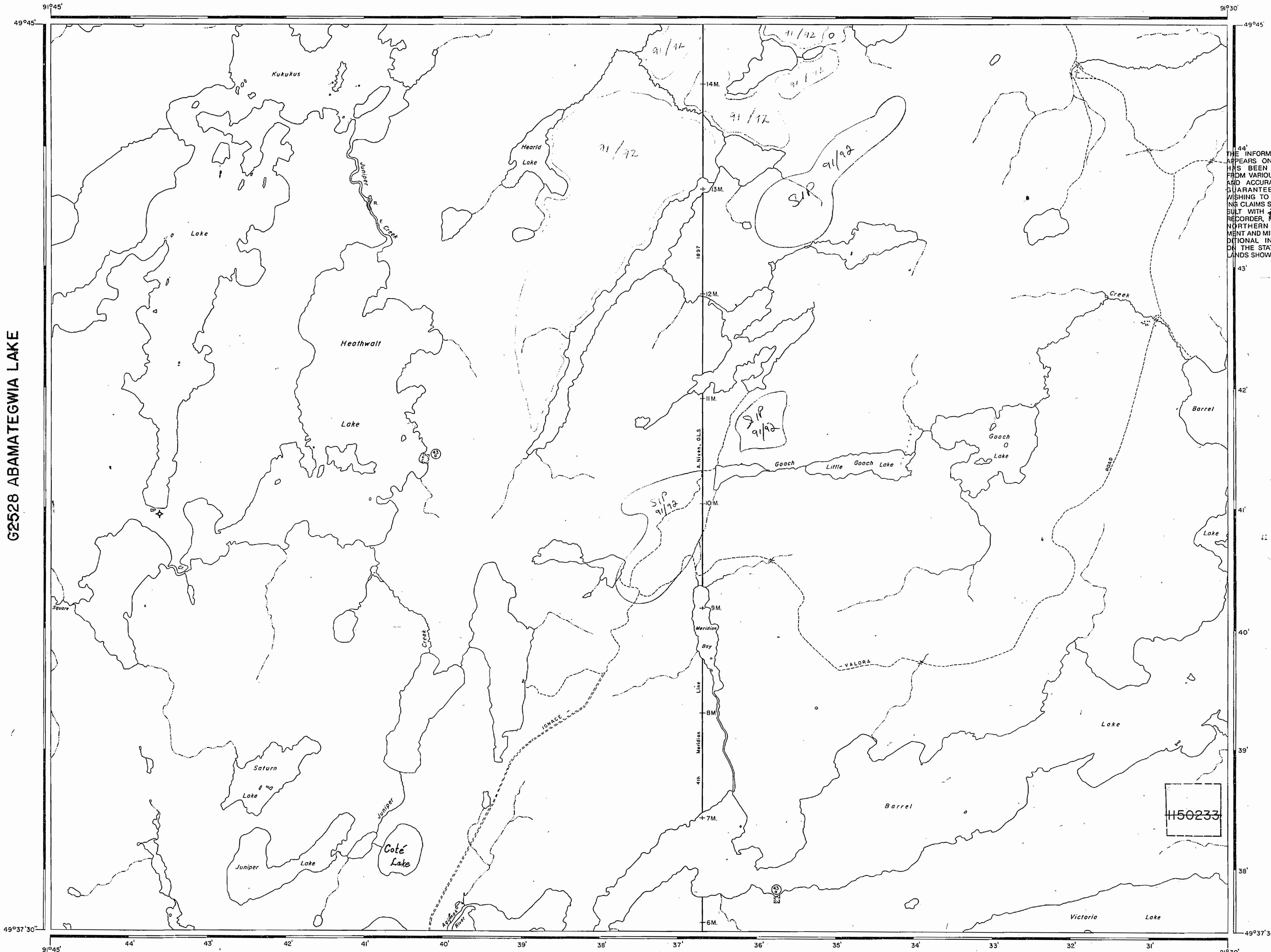


Absolute May 10/84

PLAN NO. **M.2894**

DEPARTMENT OF MINES
— ONTARIO —

G2042 FLYINGLOON LAKE



G2528 ABAMATEGWIA LAKE

Pass Lake Area - G-2555

Paguchi Lake Area - G-2553

LEGEND

- HIGHWAY AND ROUTE No.
- OTHER ROADS
- TRAILS
- SURVEYED LINES:
 - TOWNSHIPS, BASE LINES, ETC.
 - LOTS, MINING CLAIMS, PARCELS, ETC.
- UNSURVEYED LINES:
 - LOT LINES
 - PARCEL BOUNDARY
 - MINING CLAIMS ETC.
- RAILWAY AND RIGHT OF WAY
- UTILITY LINES
- NON-PERENNIAL STREAM
- FLOODING OR FLOODING RIGHTS
- SUBDIVISION OR COMPOSITE PLAN
- RESERVATIONS
- ORIGINAL SHORELINE
- MARSH OR MUSKEG
- MINES
- TRAVERSE MONUMENT
- TOURIST CAMPS (OP - OUTPOST)

THE INFORMATION THAT APPEARS ON THIS MAP HAS BEEN COMPILED FROM VARIOUS SOURCES, AND ACCURACY IS NOT GUARANTEED. THOSE WISHING TO STAKE MINING CLAIMS SHOULD CONSULT WITH THE MINING RECORDER, MINISTRY OF NORTHERN DEVELOPMENT AND MINES, FOR ADDITIONAL INFORMATION ON THE STATUS OF THE LANDS SHOWN HEREON.

DISPOSITION OF CROWN LANDS

TYPE OF DOCUMENT	SYMBOL
PATENT, SURFACE & MINING RIGHTS	
" SURFACE RIGHTS ONLY	
" MINING RIGHTS ONLY	
LEASE, SURFACE & MINING RIGHTS	
" SURFACE RIGHTS ONLY	
" MINING RIGHTS ONLY	
LICENCE OF OCCUPATION	
ORDER-IN-COUNCIL	
RESERVATION	
CANCELLED	
SAND & GRAVEL	

NOTE: MINING RIGHTS IN PARCELS PATENTED PRIOR TO MAY 6, 1913, VESTED IN ORIGINAL PATENTEE BY THE PUBLIC LANDS ACT, R.S.O. 1970, CHAP. 380, SEC. 63, SUBSEC. 1.

REFERENCES

AREAS WITHDRAWN FROM DISPOSITION

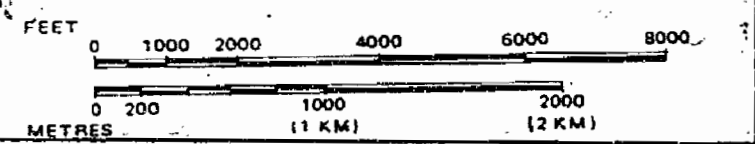
M.R.O. - MINING RIGHTS ONLY
 S.R.O. - SURFACE RIGHTS ONLY
 M.+S. - MINING AND SURFACE RIGHTS

Description	Order No.	Date	Disposition	File
Sect. 43 a		Feb. 17/72	S. R. O.	163474

DATE OF ISSUE

JAN 29 1984
 MINING DIV.
 FEDERAL RECORDS
 OFFICE - OTTAWA
 MAY 10 1984
 28910412.123455

SCALE: 1 INCH = 40 CHAINS

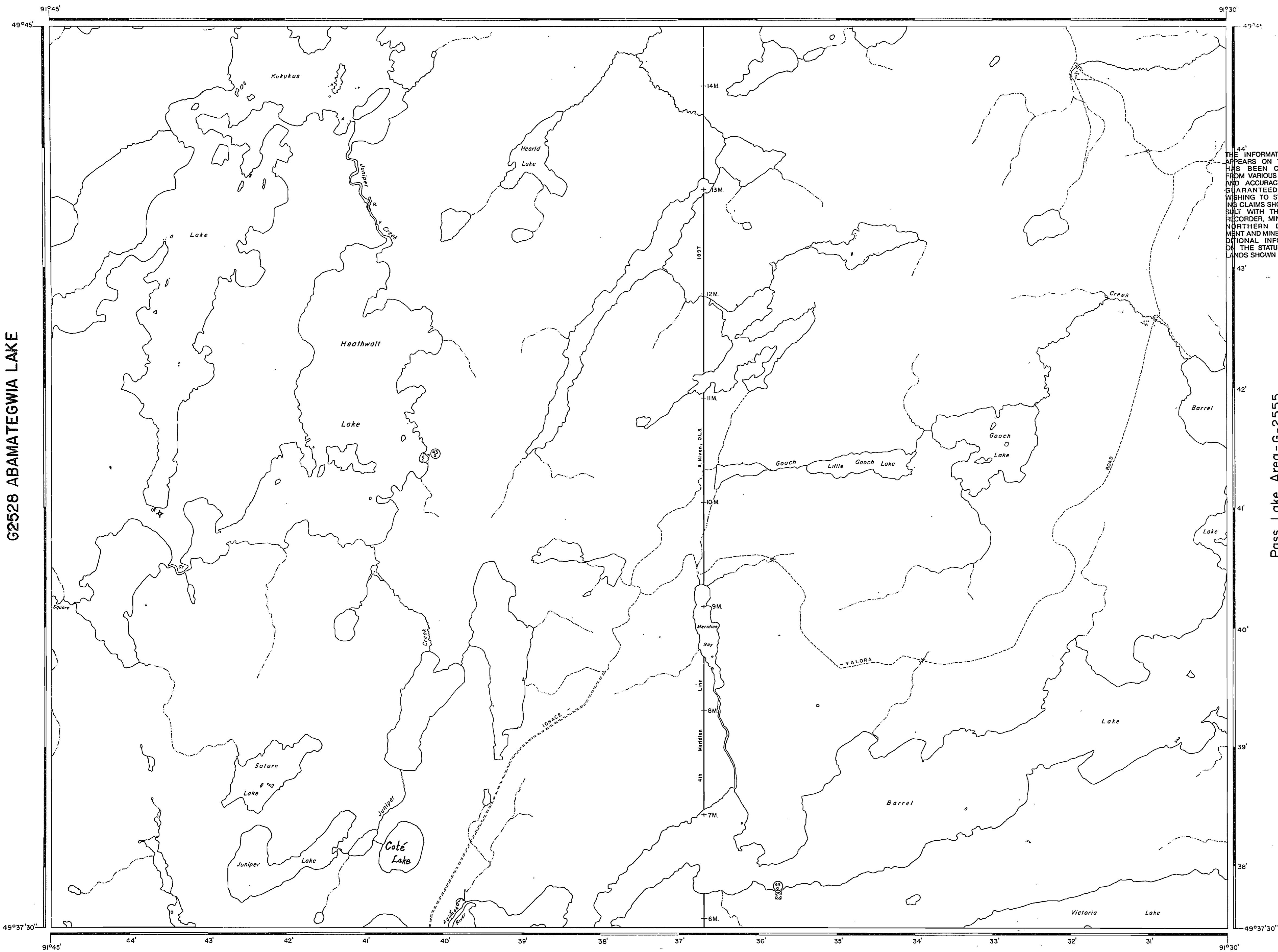


AREA
HEATHWALT LAKE
 M.N.R. ADMINISTRATIVE DISTRICT
IGNACE
 MINING DIVISION
KENORA
 LAND TITLES / REGISTRY DIVISION
KENORA

Ministry of Natural Resources
 Land Management Branch
 Ontario

Date JANUARY, 1984
 Number
 M-2894
G-2527

G2042 FLYINGLOON LAKE



G2528 ABAMATEGWIA LAKE

Pass Lake Area - G-2555

Paguchi Lake Area - G-2553

LEGEND

- HIGHWAY AND ROUTE No.
- OTHER ROADS
- TRAILS
- SURVEYED LINES:
 - TOWNSHIPS, BASE LINES, ETC.
 - LOTS, MINING CLAIMS, PARCELS, ETC.
- UNSURVEYED LINES:
 - LOT LINES
 - PARCEL BOUNDARY
 - MINING CLAIMS ETC.
- RAILWAY AND RIGHT OF WAY
- UTILITY LINES
- NON-PERENNIAL STREAM
- FLOODING OR FLOODING RIGHTS
- SUBDIVISION OR COMPOSITE PLAN
- RESERVATIONS
- ORIGINAL SHORELINE
- MARSH OR MUSKOG
- MINES
- TRAVERSE MONUMENT
- TOURIST CAMPS (OP - OUTPOST)

THE INFORMATION THAT APPEARS ON THIS MAP HAS BEEN COMPILED FROM VARIOUS SOURCES, AND ACCURACY IS NOT GUARANTEED. THOSE WISHING TO STAKE MINING CLAIMS SHOULD CONSULT WITH THE MINING RECORDER, MINISTRY OF NORTHERN DEVELOPMENT AND MINES, FOR ADDITIONAL INFORMATION ON THE STATUS OF THE LANDS SHOWN HEREON.

DISPOSITION OF CROWN LANDS

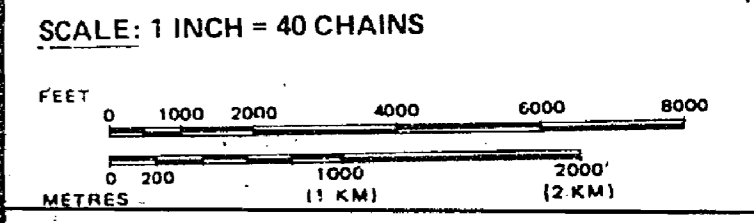
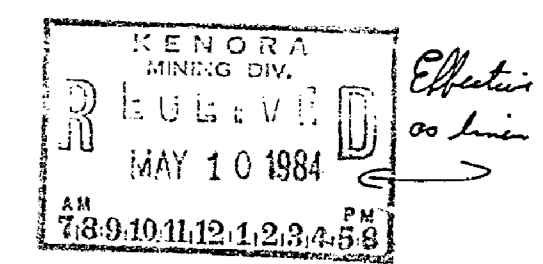
TYPE OF DOCUMENT	SYMBOL
PATENT, SURFACE & MINING RIGHTS	
" SURFACE RIGHTS ONLY	
" MINING RIGHTS ONLY	
LEASE, SURFACE & MINING RIGHTS	
" SURFACE RIGHTS ONLY	
" MINING RIGHTS ONLY	
LICENCE OF OCCUPATION	
ORDER-IN-COUNCIL	
RESERVATION	
CANCELLED	
SAND & GRAVEL	

NOTE: MINING RIGHTS IN PARCELS PATENTED PRIOR TO MAY 6, 1913, VESTED IN ORIGINAL PATENTEE BY THE PUBLIC LANDS ACT, R.S.O. 1970, CHAP. 380, SEC. 63, SUBSEC. 1.

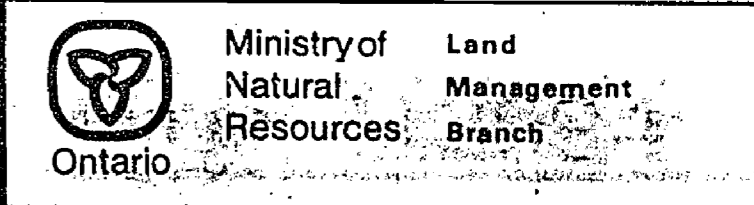
REFERENCES

AREAS WITHDRAWN FROM DISPOSITION

Description	Order No.	Date	Disposition	File
Sect. 43 a		Feb. 17/72	S. R. O.	163474



AREA
HEATHWALT LAKE
 M.N.R. ADMINISTRATIVE DISTRICT
IGNACE
 MINING DIVISION
KENORA
 LAND TITLES / REGISTRY DIVISION
KENORA



Date: JANUARY, 1984
 Number: **M-2894** **G-2527**

HEATHWALT LAKE AREA G 2527