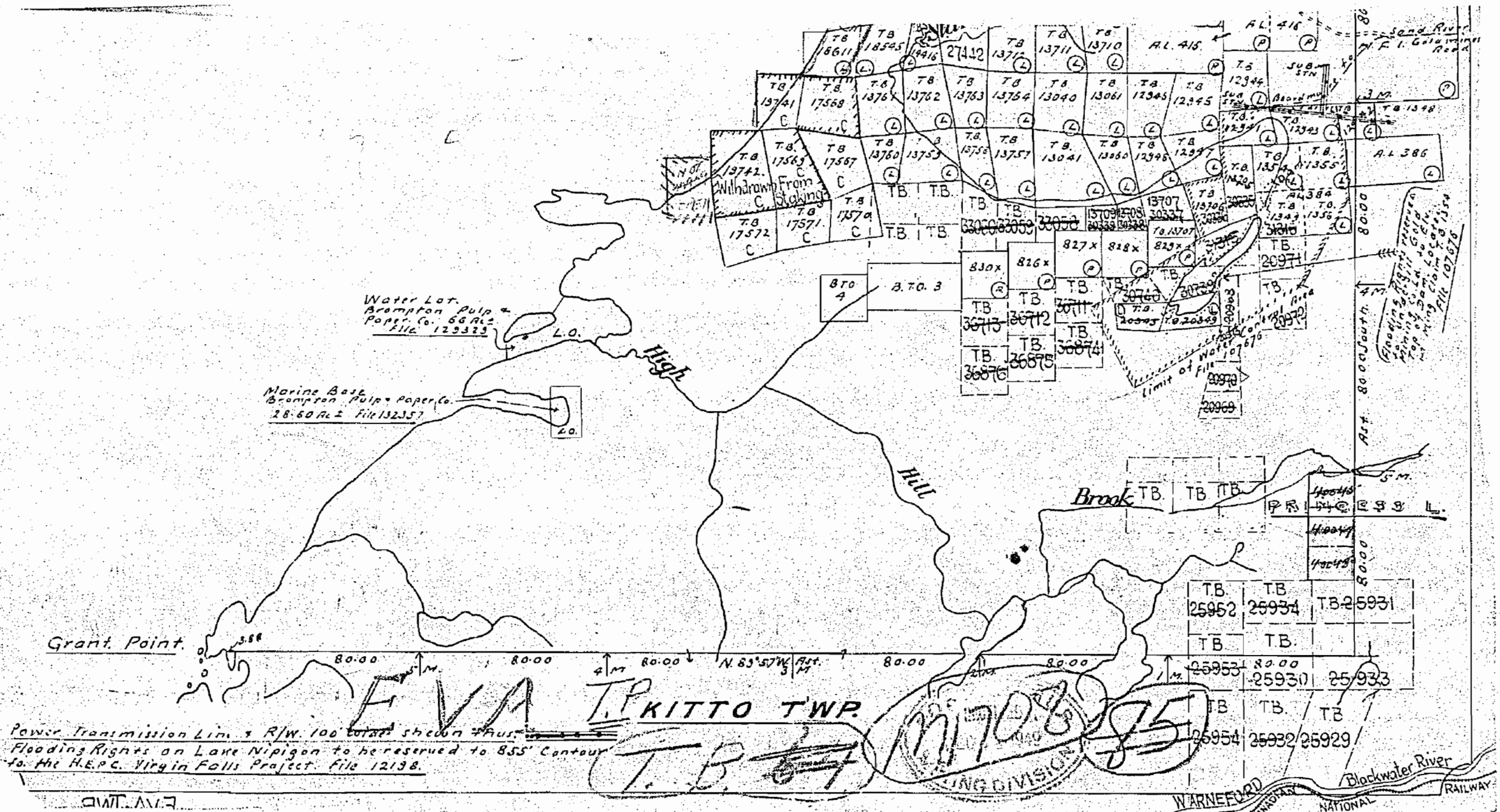
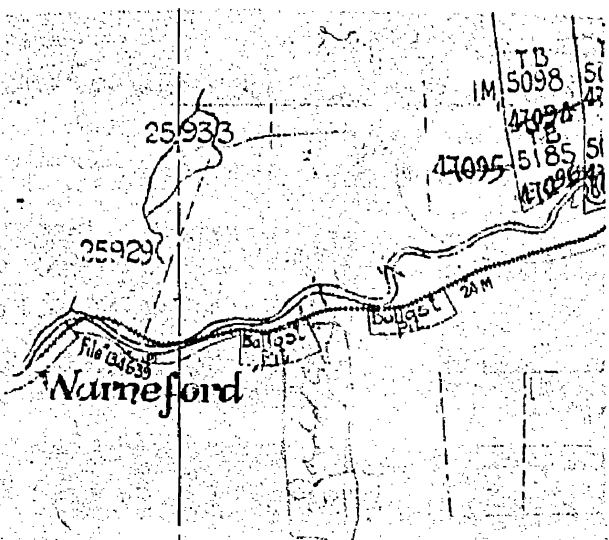


1784



1784

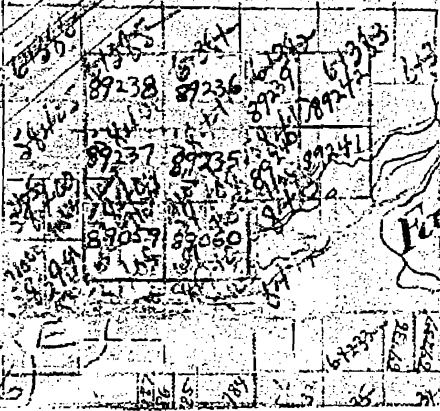


KITTO

NA

Paper

AREA
OF
BEADMO
(m1646)



1784

1961

OPEN
APR 6/62

Water Lot
Brompton Pulp &
Paper Co. 66 A.L.
File 129323

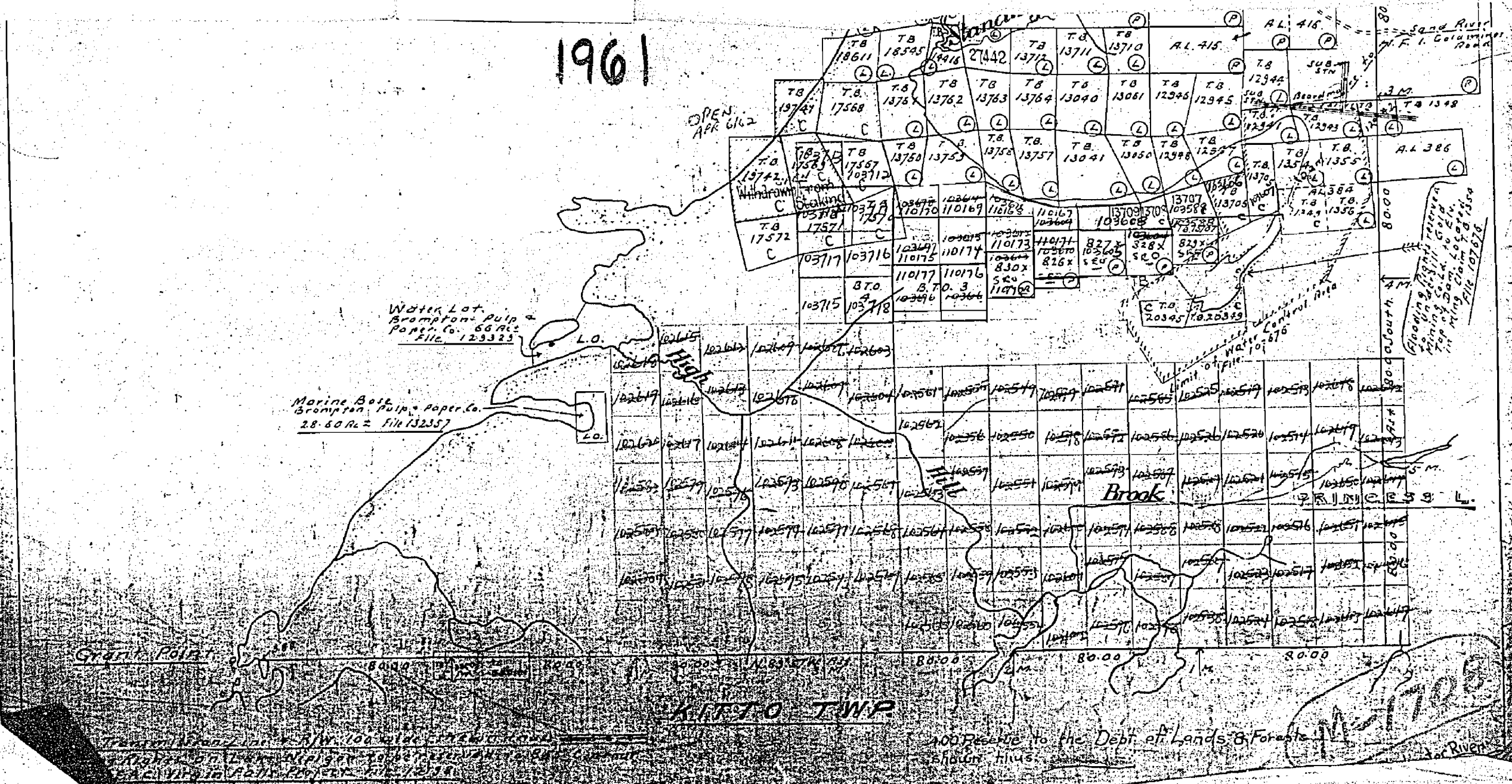
Marine Base
Brompton Pulp & Paper Co.
28-60 A.L. File 132357

Gravel Point

KITTO TWP

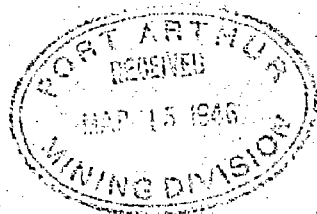
100 Reserve to the Dept. of Lands & Forests
shown here

1784
for River



1784

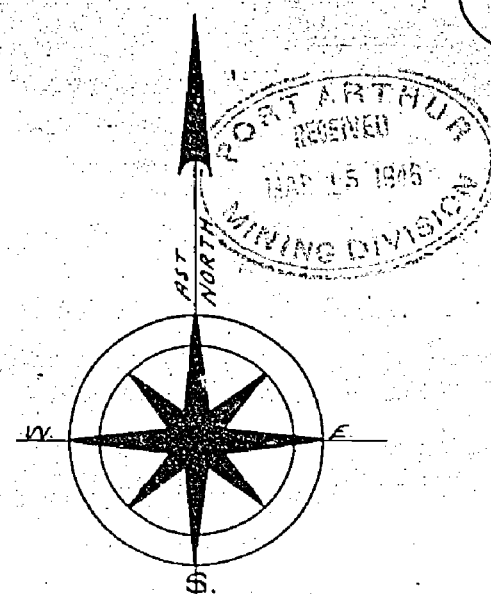
TOWNSHIP OF KITTO



DISTRICT OF THUNDER BAY.

PORT ARTHUR MINING DIVISION.

SCALE, 40 CHAINS TO AN INCH.



EVA TWP.

GRANT POINT

1946

T.B.	T.B.	T.B.
25953	25930	25933
T.B.	T.B.	T.B.
25954	25932	25929
25934	25933	25934

32188	32187	32186
32189	32190	32191
32192	32193	32194

WARNEFORD

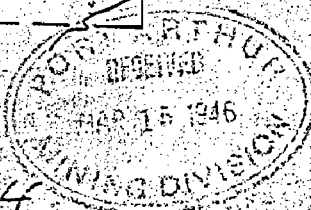
LAKE NIPIGON

SPEKE PT.

BLACKWATER NATIONAL

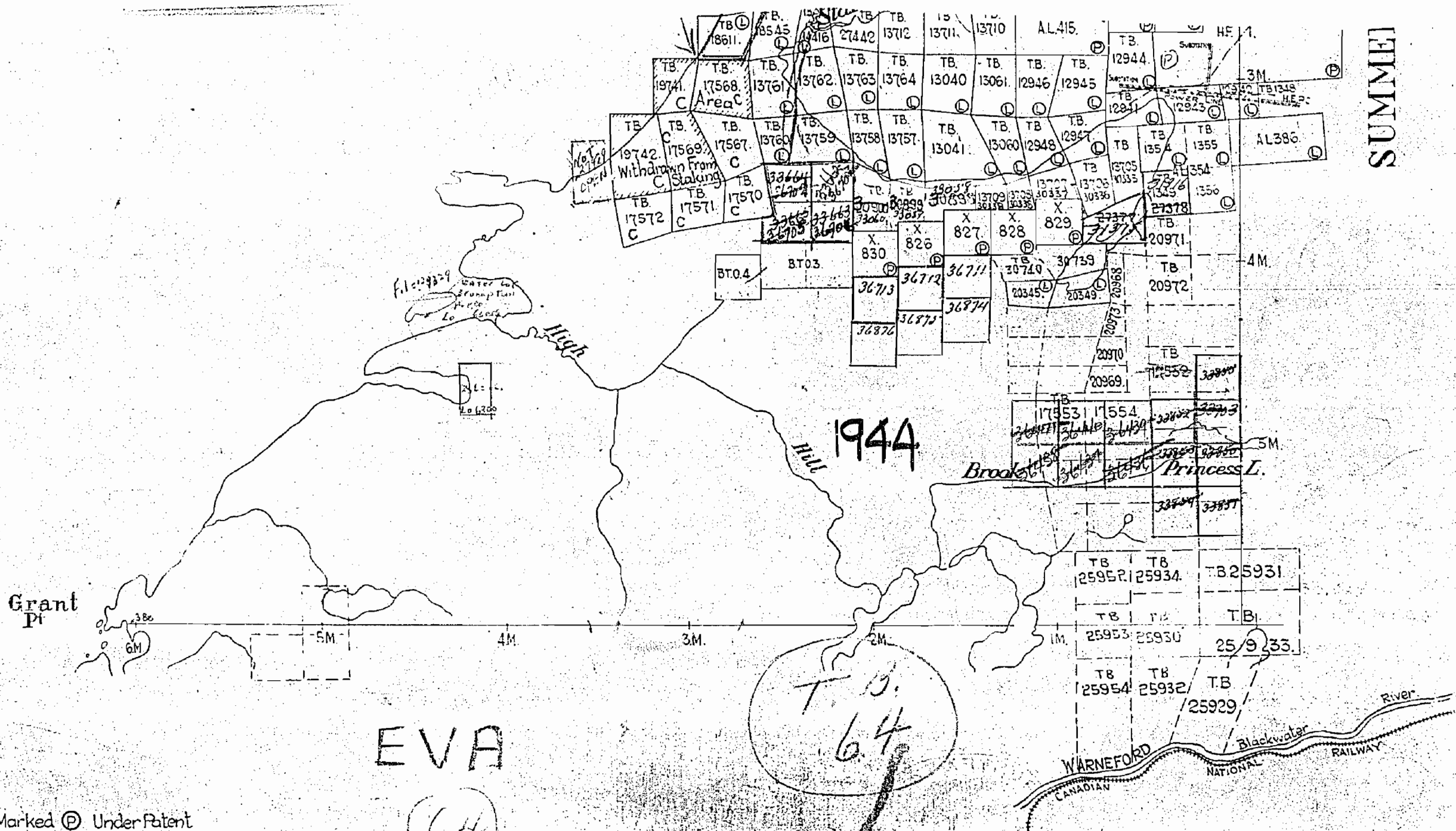
KILKENNY TWP.

MAP T.B. 114



1784

SUMMIT



Parcels Marked P Under Patent
 Parcels Marked L Under Patent
 Parcels Marked L.O. License of Occupation
 Parcels Marked C Surveyed Claims - Cancelled

DEPARTMENT OF
 PROVISIONAL
 26 NOVEMBER 1934

1784

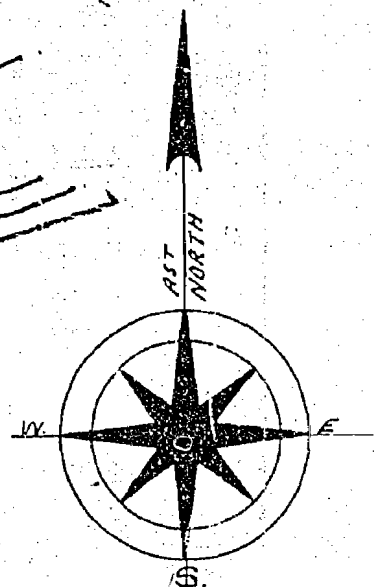
TOWNSHIP OF KITTO

No P.O.F.

DISTRICT OF THUNDER BAY.

PORT ARTHUR MINING DIVISION.

SCALE, 40 CHAINS TO AN INCH.



EVA TWP.

GRANT
POINT

1951

WARNEFORD

SPEKE PT.

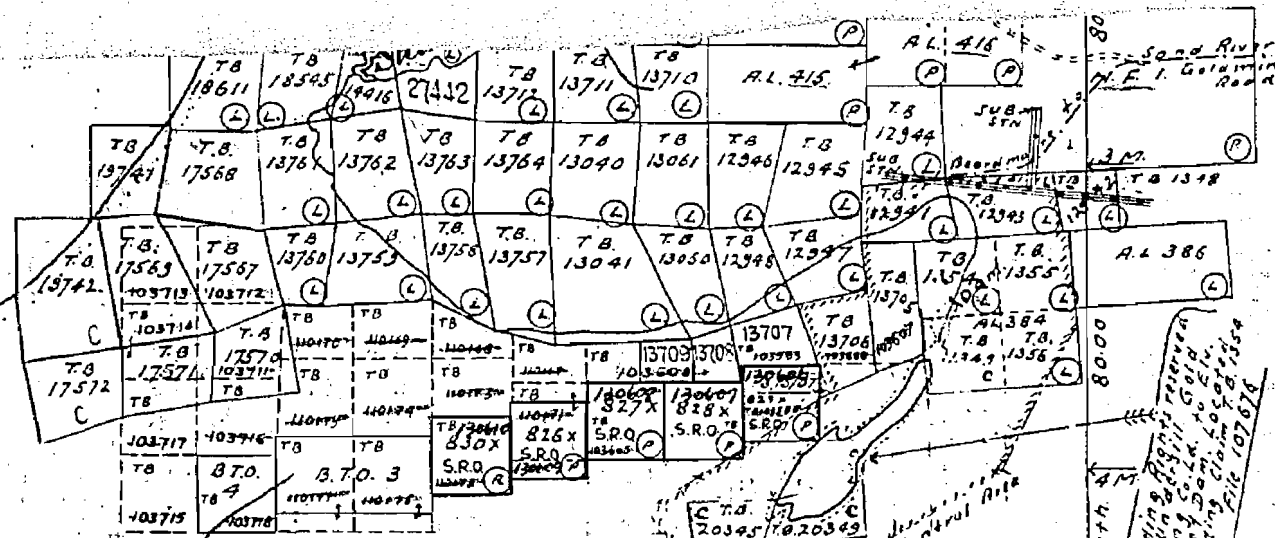
LAKE NIPIGON

All claims staked adjacent Lake Nipigon are subject to a reservation of the surface rights 66 ft in perpendicular width from the present water level approx. contour 855'.

400' SURFACE RIGHTS RESERVATION.
FLOODING RIGHTS RESERVED TO DATE 1951.

KILKENNY TWP.

1784



1964

Grant Point

KITTO TWP.

M1708

400 Reserve to the Dept. of Lands & Forests
shown thus:

WARNEFORD

Blackwater River

1784

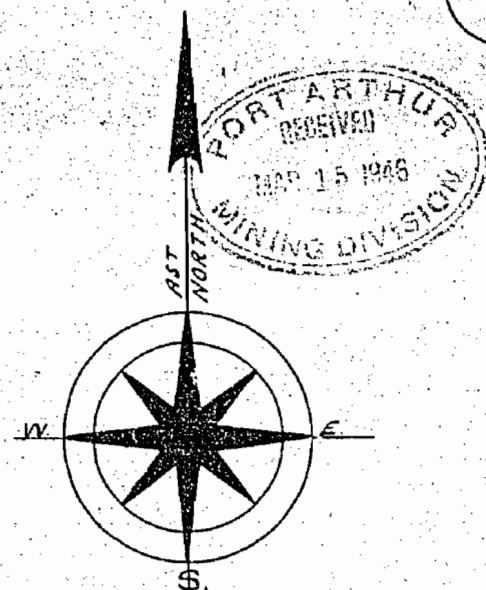


TOWNSHIP OF KITTO

DISTRICT OF THUNDER BAY.

PORT ARTHUR MINING DIVISION.

SCALE, 40 CHAINS TO AN INCH.



GRANT
POINT

EVA TWP.

1946

T.B.	T.B.	T.B.
25953	25930	25933
T.B.	T.B.	T.B.
25954	25932	25929
33033	33034	

WARNEFORD

32188	32187	32186
32187	32186	32185
32186	32185	32184

LAKE NIPIGON

SPEKE PT

BLACKWATER
NATIONAL RAILWAY

30M.
31M.

KINGS HIGHWAY
R. 1544-22

KILKENNY TWP.

MAP T.B.



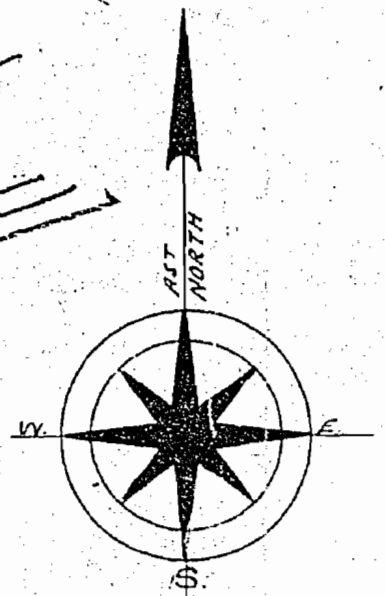
1784

TOWNSHIP OF KITTO

No P.O.F.

DISTRICT OF THUNDER BAY.
PORT ARTHUR MINING DIVISION.

SCALE, 40 CHAINS TO AN INCH.



EVA TWP.

GRANT
POINT

1951

WARNEFORD

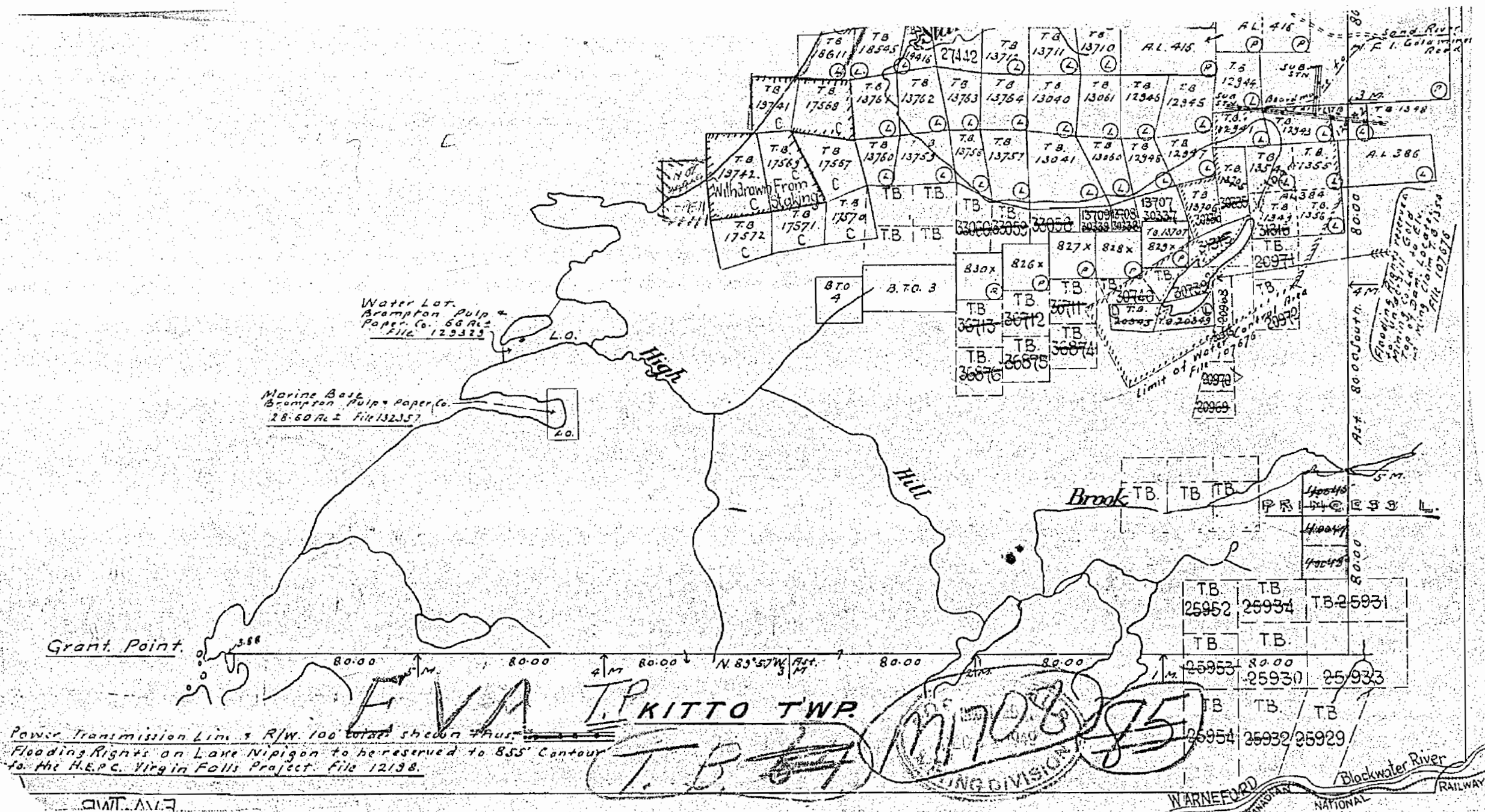
SPEKE PT.

LAKE NIPIGON

All claims staked adjacent to Lake Nipigon are subject to a reservation of the surface rights 66.11 in perpendicular width from the present water-level approx. contour 855'.
400' SURFACE RIGHTS RESERVATION.
FLOODING RIGHTS RESERVED TO NATYIN 855'.

KILKENNY TWP.

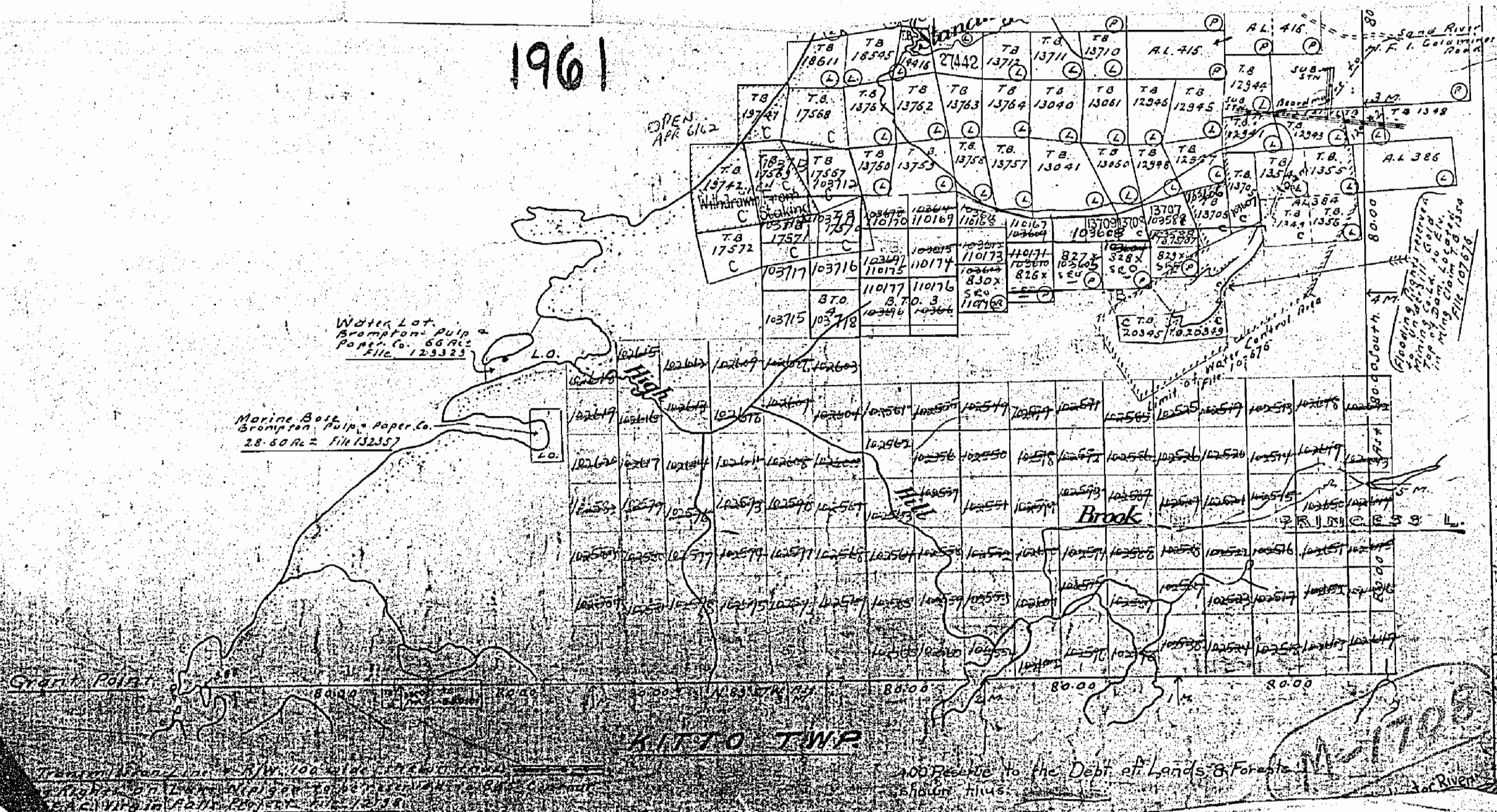
M1784



KITLO

AREA OF
BEADMO.
(m1646)

1961



1784



TOWNSHIP OF KITTO

DISTRICT OF THUNDER BAY.

PORT ARTHUR MINING DIVISION.

SCALE, 40 CHAINS TO AN INCH.



GRANT
POINT

EVA TWP.

1946

T.B.	T.B.	T.B.
25953	25930	25933
T.B.	T.B.	T.B.
25954	25932	25929
		25934

32188	32187	32186
32189	32190	32191
32192	32193	32194

WARNEFORD

SPEKE PT.

BLACKWATER
NATIONAL

CANADIAN

KINGS HIGHWAY
A 2544-22

KILKENNY TWP.

MAP T.B. 114



LAKE NIPIGON

1784

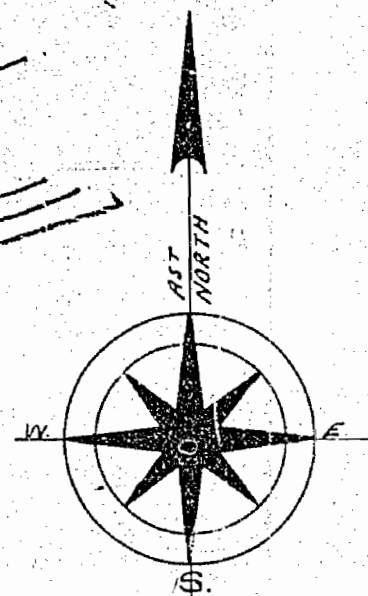
TOWNSHIP OF KITTO

No P.O.F.

DISTRICT OF THUNDER BAY.

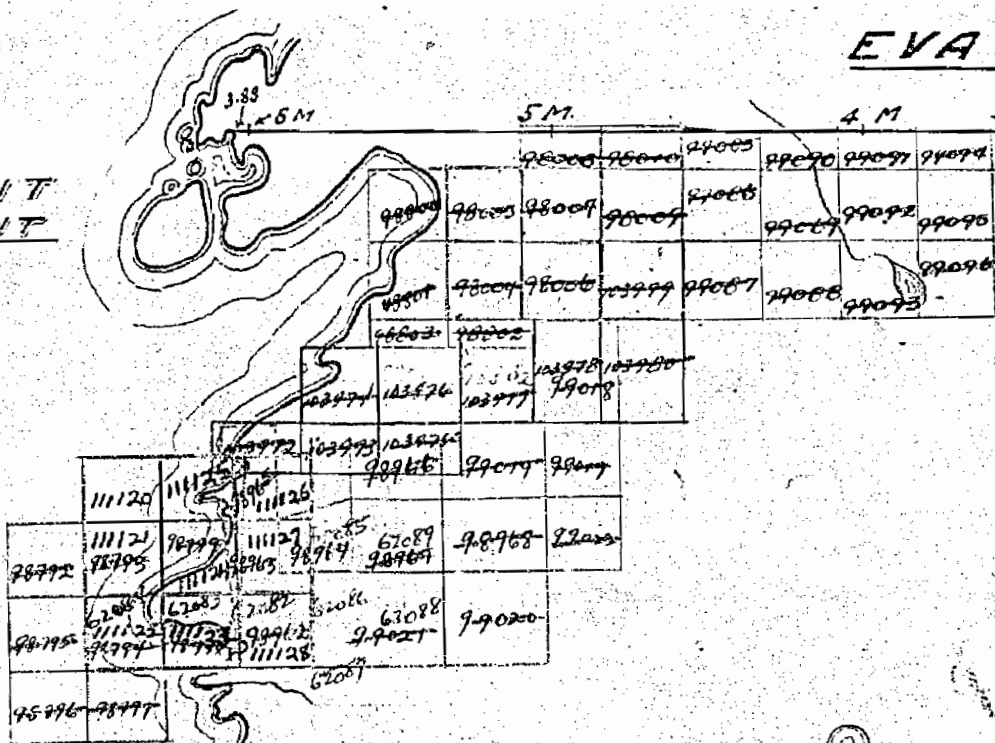
PORT ARTHUR MINING DIVISION.

SCALE, 40 CHAINS TO AN INCH.



EVA TWP.

GRANT
POINT



1951

T.B.	T.B.	T.B.
25953	25930	25973
T.B.	T.B.	T.B.
25354	25932	25929
		30334

WARNEFORD

T.B.	T.B.	T.B.
T.B.	T.B.	T.B.
T.B.	T.B.	T.B.

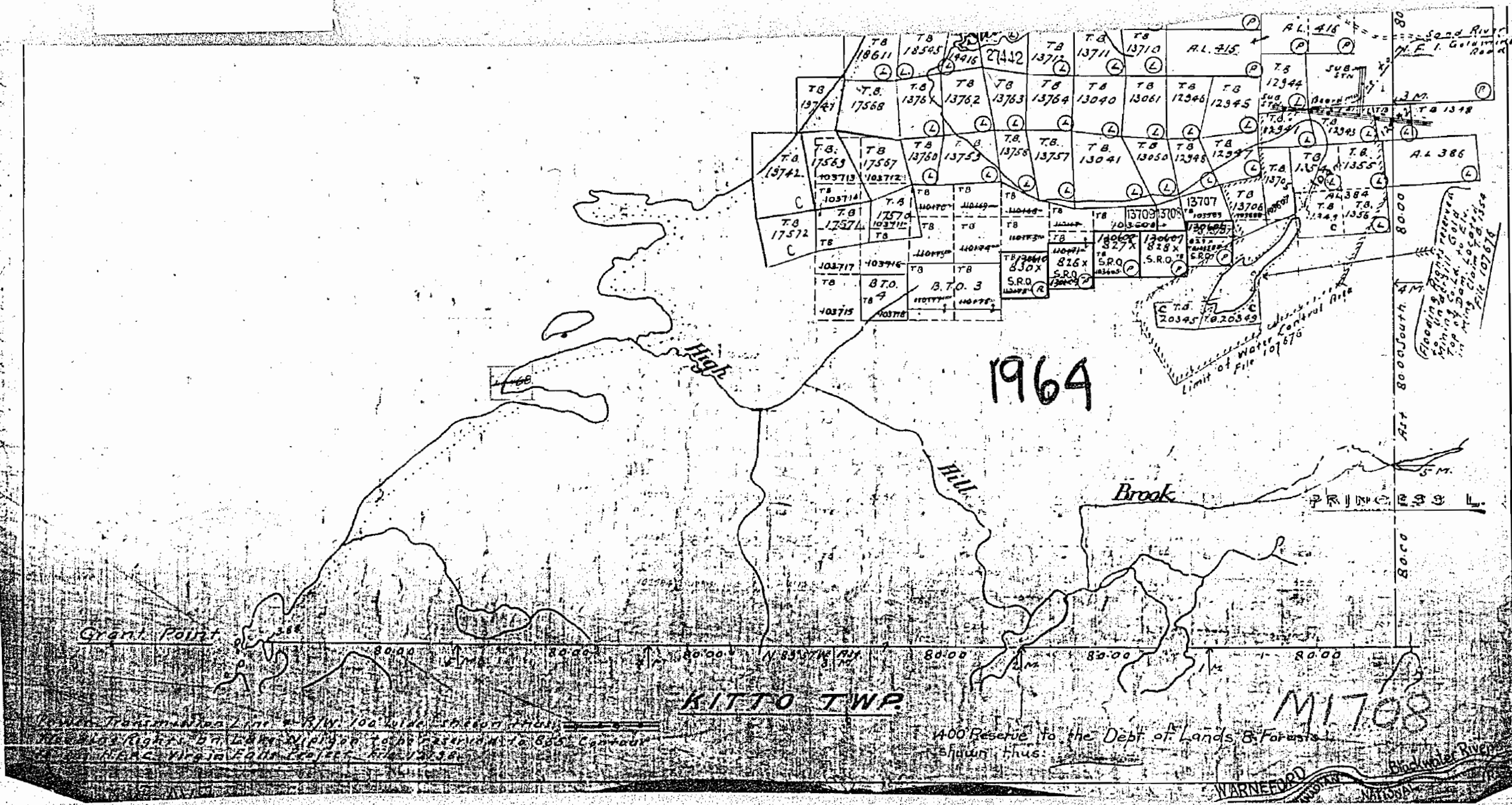
LAKE NIPIGON

SPEKE PT

BLACKWATER
NATIONAL RAILWAY

58346	58344	58342	58340	58338	58336	58334	58332	58330	58328	58326	58324	58322	58320	58318	58316	58314	58312	58310	58308	58306	58304	58302	58300	58298	58296	58294	58292	58290	58288	58286	58284	58282	58280	58278	58276	58274	58272	58270	58268	58266	58264	58262	58260	58258	58256	58254	58252	58250	58248	58246	58244	58242	58240	58238	58236	58234	58232	58230	58228	58226	58224	58222	58220	58218	58216	58214	58212	58210	58208	58206	58204	58202	58200	58198	58196	58194	58192	58190	58188	58186	58184	58182	58180	58178	58176	58174	58172	58170	58168	58166	58164	58162	58160	58158	58156	58154	58152	58150	58148	58146	58144	58142	58140	58138	58136	58134	58132	58130	58128	58126	58124	58122	58120	58118	58116	58114	58112	58110	58108	58106	58104	58102	58100	58098	58096	58094	58092	58090	58088	58086	58084	58082	58080	58078	58076	58074	58072	58070	58068	58066	58064	58062	58060	58058	58056	58054	58052	58050	58048	58046	58044	58042	58040	58038	58036	58034	58032	58030	58028	58026	58024	58022	58020	58018	58016	58014	58012	58010	58008	58006	58004	58002	58000
-------	-------	-------	-------	-------	-------	-------	-------	-------	-------	-------	-------	-------	-------	-------	-------	-------	-------	-------	-------	-------	-------	-------	-------	-------	-------	-------	-------	-------	-------	-------	-------	-------	-------	-------	-------	-------	-------	-------	-------	-------	-------	-------	-------	-------	-------	-------	-------	-------	-------	-------	-------	-------	-------	-------	-------	-------	-------	-------	-------	-------	-------	-------	-------	-------	-------	-------	-------	-------	-------	-------	-------	-------	-------	-------	-------	-------	-------	-------	-------	-------	-------	-------	-------	-------	-------	-------	-------	-------	-------	-------	-------	-------	-------	-------	-------	-------	-------	-------	-------	-------	-------	-------	-------	-------	-------	-------	-------	-------	-------	-------	-------	-------	-------	-------	-------	-------	-------	-------	-------	-------	-------	-------	-------	-------	-------	-------	-------	-------	-------	-------	-------	-------	-------	-------	-------	-------	-------	-------	-------	-------	-------	-------	-------	-------	-------	-------	-------	-------	-------	-------	-------	-------	-------	-------	-------	-------	-------	-------	-------	-------	-------	-------	-------	-------	-------	-------	-------	-------	-------	-------	-------	-------	-------

1784



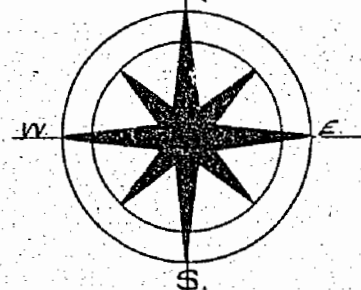
1784

TOWNSHIP OF KITTO

DISTRICT OF THUNDER BAY.

PORT ARTHUR MINING DIVISION.

SCALE, 40 CHAINS TO AN INCH.



GRANT
POINT

EVA TWP.

1946

T.B.	T.B.	T.B.
25953	25930	25933
T.B.	T.B.	T.B.
25954	25932	25929
		234334

WARNEFORD

37188	37187	37186
37185	37184	37183
37182	37181	37180

LAKE NIPIGON

SPEKE PT

BLACKWATER
NATIONAL

CANADIAN

KINGS HIGHWAY

KILKENNY TWP.

MAP T.B.



1784

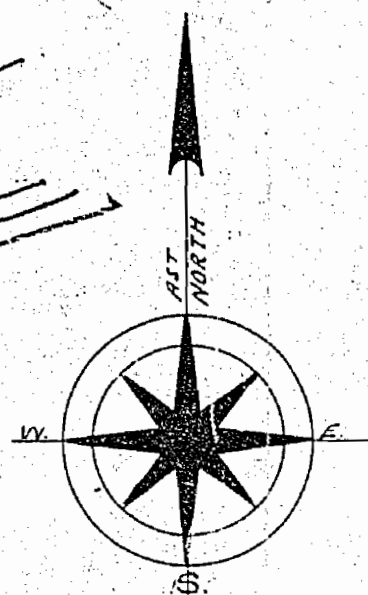
TOWNSHIP OF KITTO

No P.O.F.

DISTRICT OF THUNDER BAY.

PORT ARTHUR MINING DIVISION.

SCALE, 40 CHAINS TO AN INCH.



EVA TWP.

GRANT
POINT

1951

WARNEFORD

LAKE NIPIGON

SPEKE PT

BLACKWATER
NATIONAL

KILKENNY TWP.

All claims staked adjacent Lake Nipigon are subject to a reservation of the surface rights, 66 ft in perpendicular width from the present water level approx. contour 855'.
400' SURFACE RIGHTS RESERVATION.
FLOODING RIGHTS RESERVED TO NATM 815.

m1784