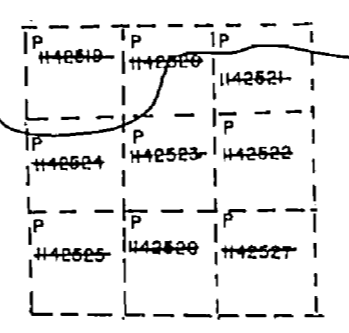
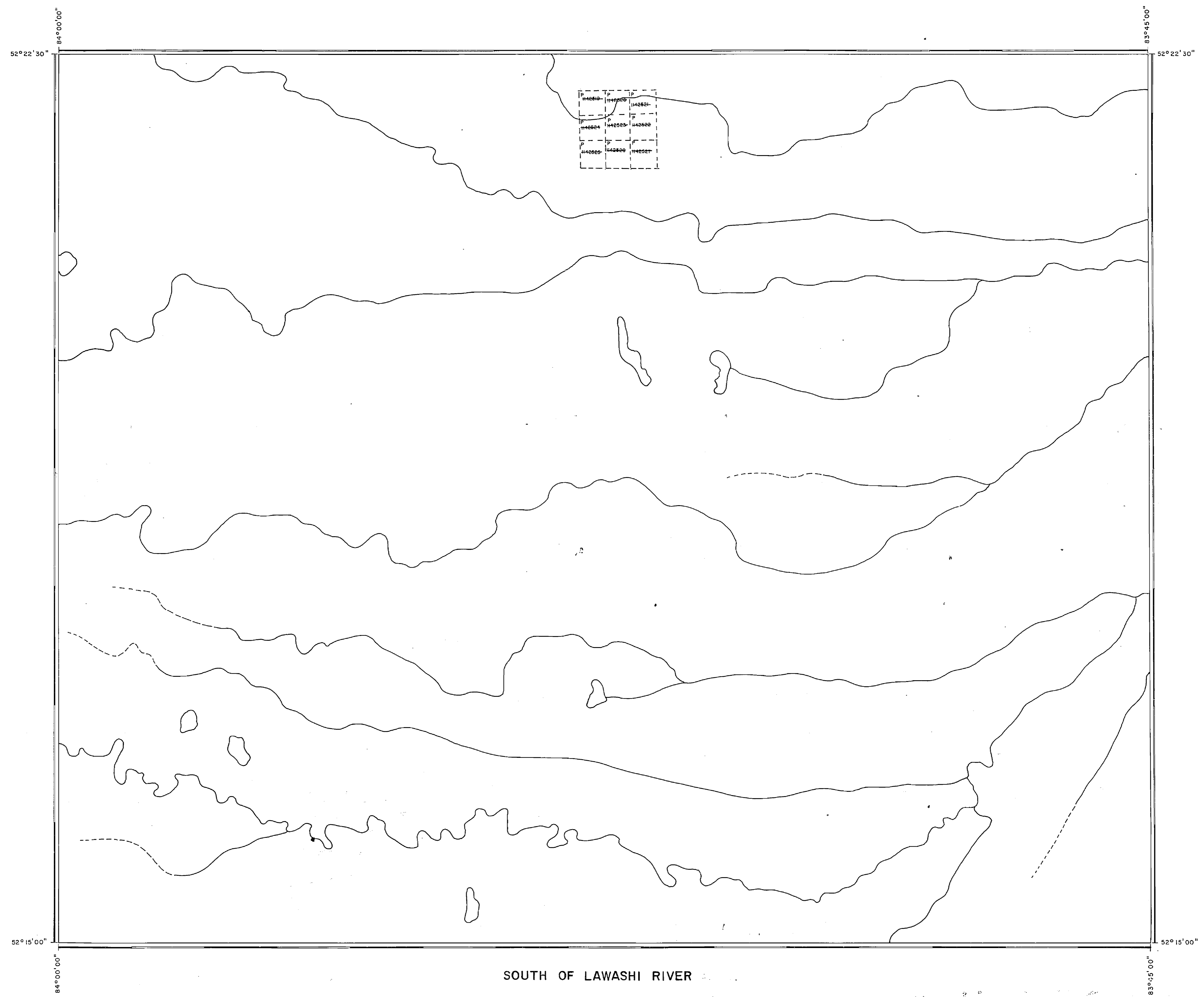


REFERENCES

AREAS WITHDRAWN FROM DISPOSITION

- M.R.O. - MINING RIGHTS ONLY
- S.R.O. - SURFACE RIGHTS ONLY
- M.+S. - MINING AND SURFACE RIGHTS

Description	Order No.	Date	Disposition	File



THE INFORMATION THAT APPEARS ON THIS MAP HAS BEEN COMPILED FROM VARIOUS SOURCES, AND ACCURACY IS NOT GUARANTEED. THOSE WISHING TO STAKE MINING CLAIMS SHOULD CONSULT WITH THE MINING RECORDER, MINISTRY OF NORTHERN DEVELOPMENT AND MINES, FOR ADDITIONAL INFORMATION ON THE STATUS OF THE LANDS SHOWN HEREON.

SOUTH OF LAWASHI RIVER

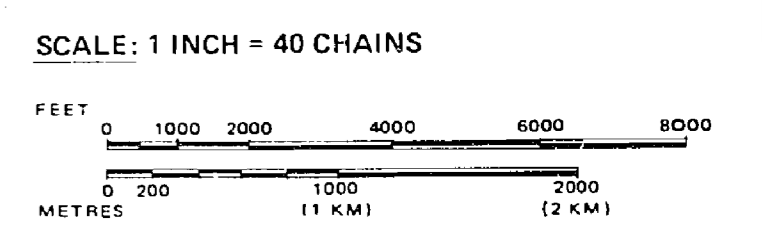
LEGEND

- HIGHWAY AND ROUTE No.
- OTHER ROADS
- TRAILS
- SURVEYED LINES:
  - TOWNSHIPS, BASE LINES, ETC.
  - LOTS, MINING CLAIMS, PARCELS, ETC.
- UNSURVEYED LINES:
  - LOT LINES
  - PARCEL BOUNDARY
  - MINING CLAIMS ETC.
- RAILWAY AND RIGHT OF WAY
- UTILITY LINES
- NON-PERENNIAL STREAM
- FLOODING OR FLOODING RIGHTS
- SUBDIVISION OR COMPOSITE PLAN
- RESERVATIONS
- ORIGINAL SHORELINE
- MARSH OR MUSKEG
- MINES
- TRAVERSE MONUMENT

DISPOSITION OF CROWN LANDS

TYPE OF DOCUMENT	SYMBOL
PATENT, SURFACE & MINING RIGHTS	
" SURFACE RIGHTS ONLY	
" MINING RIGHTS ONLY	
LEASE, SURFACE & MINING RIGHTS	
" SURFACE RIGHTS ONLY	
" MINING RIGHTS ONLY	
LICENCE OF OCCUPATION	
ORDER-IN-COUNCIL	
RESERVATION	
CANCELLED	
SAND & GRAVEL	

NOTE: MINING RIGHTS IN PARCELS PATENTED PRIOR TO MAY 6, 1913, VESTED IN ORIGINAL PATENTEES BY THE PUBLIC LANDS ACT, R.S.O. 1970, CHAP. 380, SEC. 63, SUBSEC. 1.



AREA  
**LAWASHI RIVER**  
 M.N.R. ADMINISTRATIVE DISTRICT  
**MOOSONEE**  
 MINING DIVISION  
**PORCUPINE**  
 LAND TITLES / REGISTRY DIVISION  
**KENORA**

DATE OF ISSUE  
**MAY 15 1988**  
 PROVINCIAL RECORDS  
 OFFICE - SUDBURY

Ministry of Natural Resources Ontario  
 Ministry of Northern Development and Mines

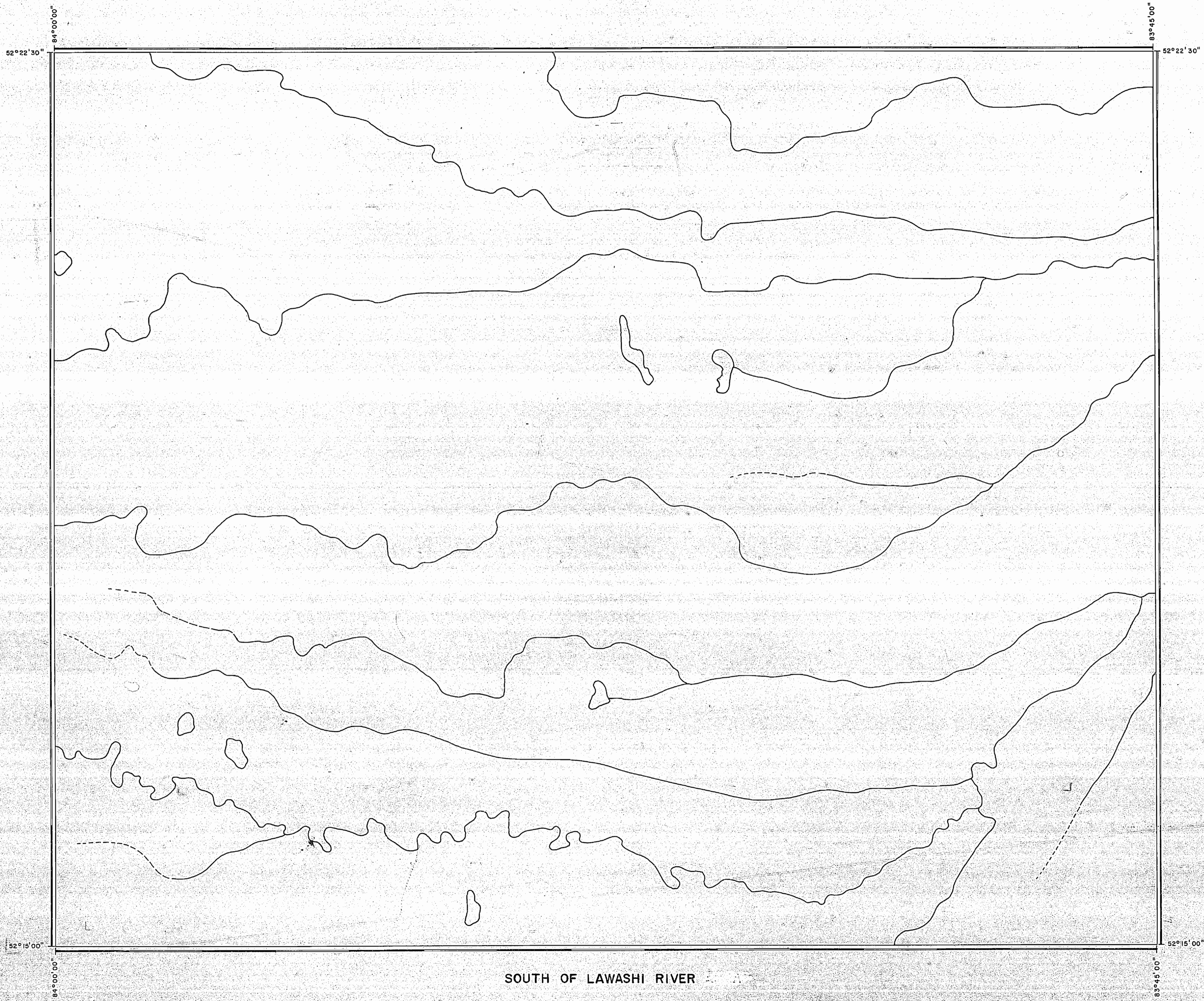
Date OCTOBER 1990 Number **G-3876**

REFERENCES

AREAS WITHDRAWN FROM DISPOSITION

M.R.O. - MINING RIGHTS ONLY				
S.R.O. - SURFACE RIGHTS ONLY				
M. & S. - MINING AND SURFACE RIGHTS				
Description	Order No.	Date	Disposition	File

THE INFORMATION THAT APPEARS ON THIS MAP HAS BEEN COMPILED FROM VARIOUS SOURCES AND ACCURACY IS NOT GUARANTEED. THOSE WISHING TO STAKE MINING CLAIMS SHOULD CONSULT WITH THE MINING RECORDER, MINISTRY OF NORTHERN DEVELOPMENT AND MINES, FOR ADDITIONAL INFORMATION ON THE STATUS OF THE LANDS SHOWN HEREON.



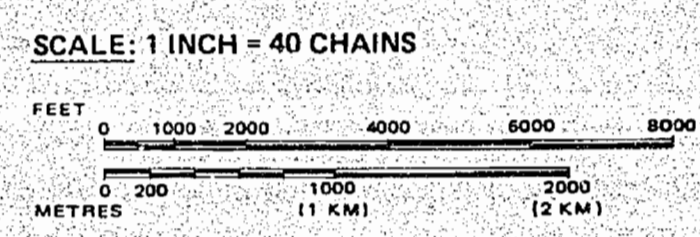
LEGEND

HIGHWAY AND ROUTE No.	
OTHER ROADS	
TRAILS	
SURVEYED LINES:	
TOWNSHIPS, BASE LINES, ETC.	
LOTS, MINING CLAIMS, PARCELS, ETC.	
UNSURVEYED LINES:	
LOT LINES	
PARCEL BOUNDARY	
MINING CLAIMS ETC.	
RAILWAY AND RIGHT OF WAY	
UTILITY LINES	
NON-PERENNIAL STREAM	
FLOODING OR FLOODING RIGHTS	
SUBDIVISION OR COMPOSITE PLAN	
RESERVATIONS	
ORIGINAL SHORELINE	
MARSH OR MUSKEG	
MINES	
TRAVERSE MONUMENT	

DISPOSITION OF CROWN LANDS

TYPE OF DOCUMENT	SYMBOL
PATENT, SURFACE & MINING RIGHTS	
" SURFACE RIGHTS ONLY	
" MINING RIGHTS ONLY	
LEASE, SURFACE & MINING RIGHTS	
" SURFACE RIGHTS ONLY	
" MINING RIGHTS ONLY	
LICENCE OF OCCUPATION	
ORDER-IN-COUNCIL	
RESERVATION	
CANCELLED	
SAND & GRAVEL	

NOTE: MINING RIGHTS IN PARCELS PATENTED PRIOR TO MAY 6, 1915, VESTED IN ORIGINAL PATENTEE BY THE PUBLIC LANDS ACT, R.S.O. 1970, CHAP. 389, SEC. 63, SUBSEC. 1.



AREA  
**LAWASHI RIVER**  
 M.N.R. ADMINISTRATIVE DISTRICT  
**MOOSONEE**  
 MINING DIVISION  
**PORCUPINE**  
 LAND TITLES / REGISTRY DIVISION  
**KENORA**

Ministry of Natural Resources Ontario  
 Ministry of Northern Development and Mines

Date: OCTOBER 1990  
 Number: **G-3876**

SOUTH OF LAWASHI RIVER