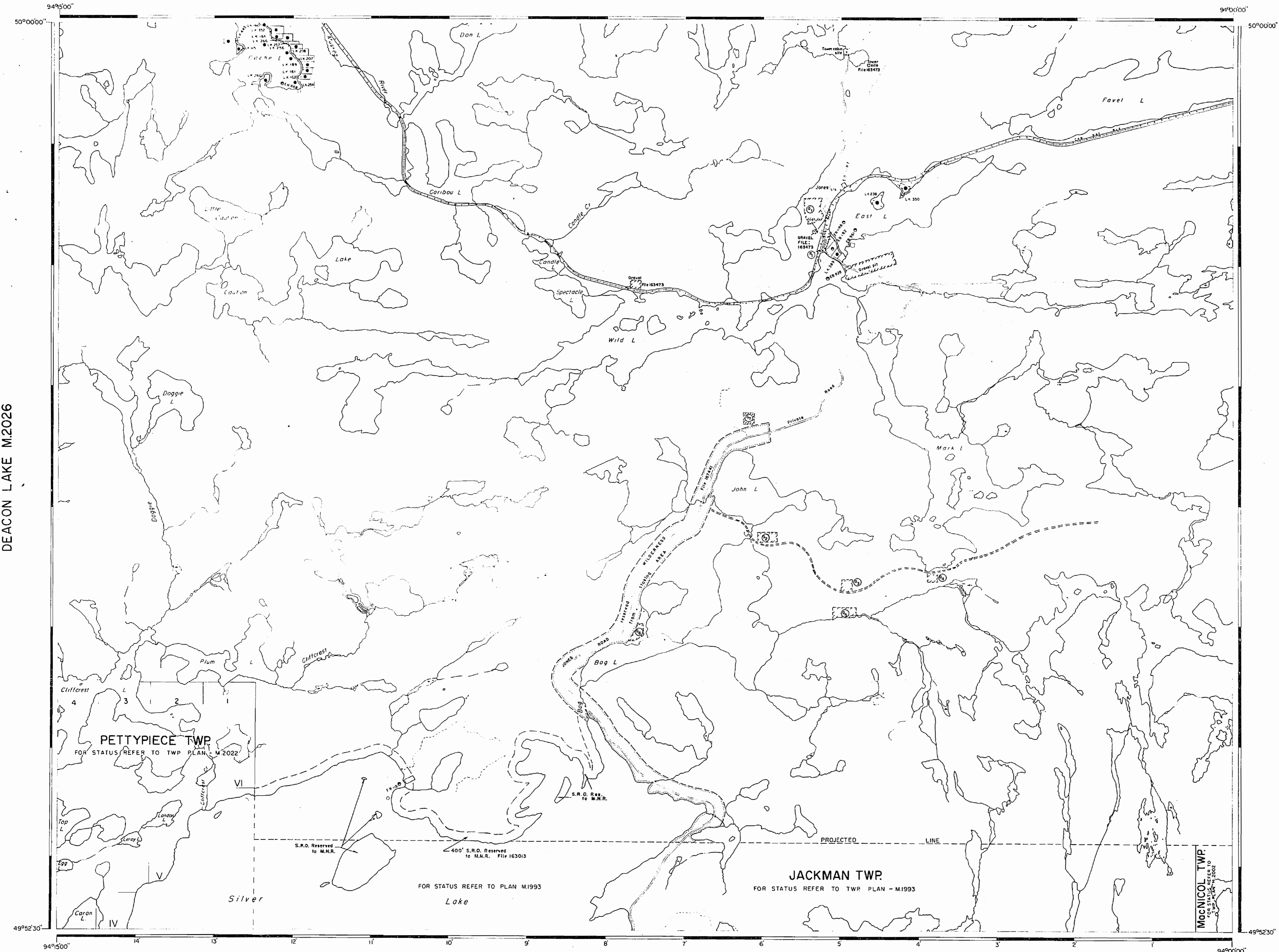


WONDERLAND LAKE M.1977



AREA OF

MARK LAKE

DISTRICT OF
KENORA

KENORA
MINING DIVISION

SCALE: 1-INCH = 40 CHAINS

LEGEND

- PATENTED LAND
PATENTED FOR SURFACE RIGHTS ONLY
LEASES
LICENSE OF OCCUPATION
CROWN LAND SALE
LOCATED LAND
CANCELLED
MINING RIGHTS ONLY
SURFACE RIGHTS ONLY
HIGHWAY & ROUTE No.
ROADS
TRAILS
RAILWAYS
POWER LINES
MARSH OR MUSKEG
MINES
- P or
L
C.S.
Loc.
C.
M.R.O.
S.R.O.
17
X

*used only with summer resort locations or when space is limited

NOTES

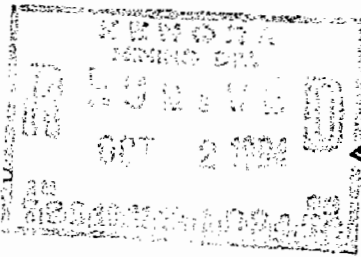
400' Surface Rights Reservation Around the Shores of All Lakes and Rivers

Areas withdrawn from staking under Section 43 of the Mining Act (R.S.A. 1970).

Order No.	File	Date	Disposition
①	W.65/76	198521	19/11/76 S.R.O.

SAND AND GRAVEL

MNR	GRAVEL	RESERVE	ID-2	JAN. 30, 1980.
①	"	"	ID-9	"
②	"	"	ID-10	"
③	"	"	ID-11	"
④	"	"	ID-12	"
⑤	"	"	ID-13	"
⑥	"	"	ID-14	"
⑦	"	"	ID-15	FILE 188521



Effective as
from
Oct. 2/84

Obsolete Oct. 17/84

NATIONAL TOPOGRAPHIC SERIES 52-F-16

PLAN NO. M.2065

ONTARIO
MINISTRY OF NATURAL RESOURCES
SURVEYS AND MAPPING BRANCH

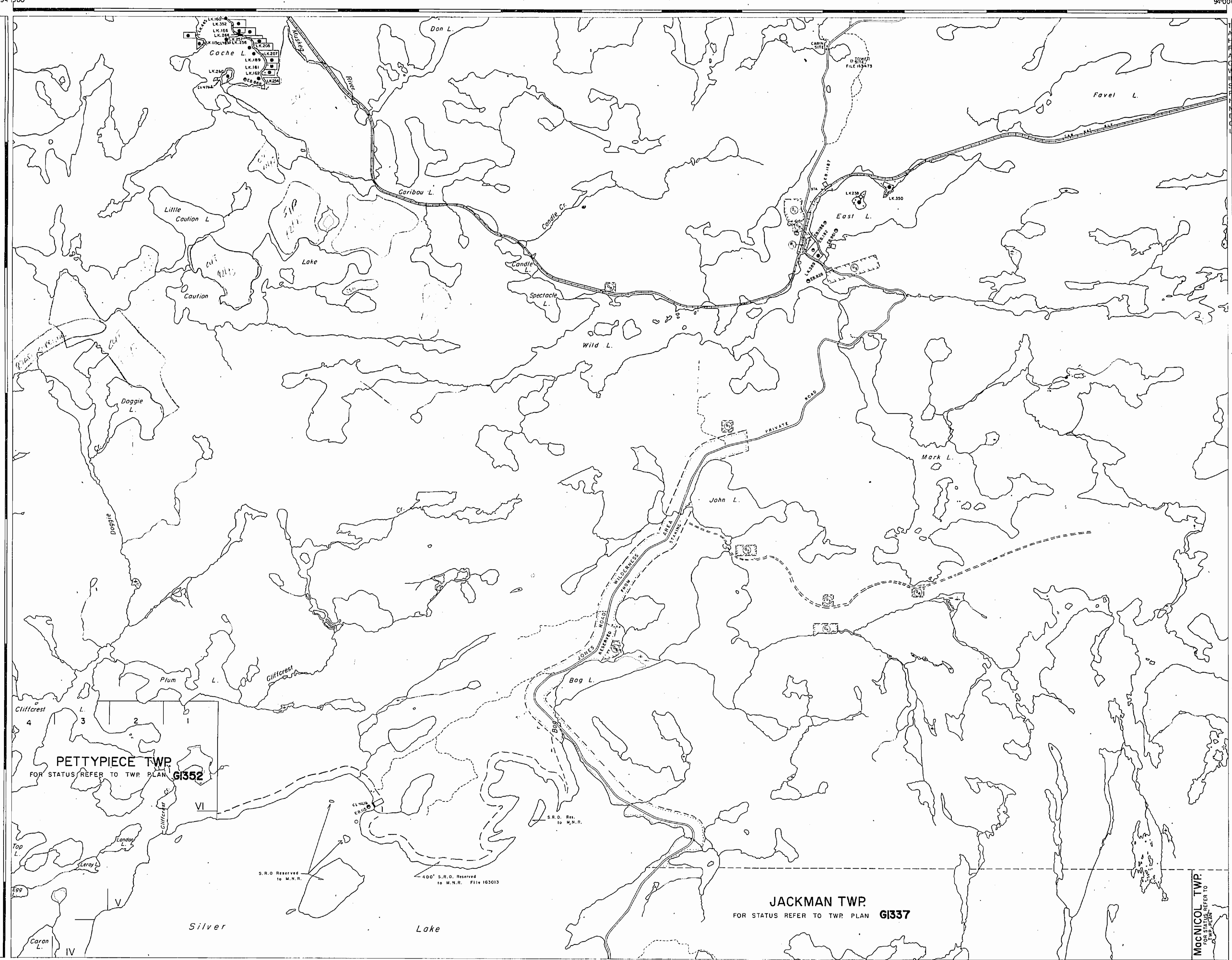
DANIELS LAKE M.1958

DEACON LAKE M.2026

WONDERLAND LAKE G-2658

DEACON LAKE G-2611

DANIELS LAKE G-2610



THE INFORMATION THAT APPEARS ON THIS MAP HAS BEEN COMPILED FROM VARIOUS SOURCES, AND ACCURACY IS NOT GUARANTEED. THOSE WISHING TO STAKE MINING CLAIMS SHOULD CONSULT WITH THE MINING RECORDER, MINISTRY OF NORTHERN DEVELOPMENT AND MINES, FOR ADDITIONAL INFORMATION ON THE STATUS OF THE LANDS SHOWN HEREON.

LEGEND

- HIGHWAY AND ROUTE No.
- OTHER ROADS
- TRAILS
- SURVEYED LINES:
 - TOWNSHIPS, BASE LINES, ETC.
 - LOTS, MINING CLAIMS, PARCELS, ETC.
- UNSURVEYED LINES:
 - LOT LINES
 - PARCEL BOUNDARY
 - MINING CLAIMS ETC.
- RAILWAY AND RIGHT OF WAY
- UTILITY LINES
- NON-PERENNIAL STREAM
- FLOODING OR FLOODING RIGHTS
- SUBDIVISION OR COMPOSITE PLAN
- RESERVATIONS
- ORIGINAL SHORELINE
- MARSH OR MUSKEG
- MINES
- TRAVERSE MONUMENT
- TOURIST CAMPS

DISPOSITION OF CROWN LANDS

TYPE OF DOCUMENT	SYMBOL
PATENT, SURFACE & MINING RIGHTS	●
" SURFACE RIGHTS ONLY	○
" MINING RIGHTS ONLY	○
LEASE, SURFACE & MINING RIGHTS	■
" SURFACE RIGHTS ONLY	■
" MINING RIGHTS ONLY	■
LICENCE OF OCCUPATION	○
ORDER-IN-COUNCIL	○
RESERVATION	○
CANCELLED	○
SAND & GRAVEL	○

NOTE: MINING RIGHTS IN PARCELS PATENTED PRIOR TO MAY 6, 1913, VESTED IN ORIGINAL PATENTEE BY THE PUBLIC LANDS ACT, R.S.O. 1970, CHAP. 380, SEC. 63, SUBSEC. 1.

REFERENCES

AREAS WITHDRAWN FROM DISPOSITION

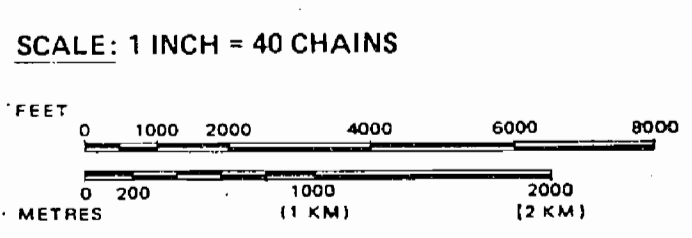
- M.R.O. - MINING RIGHTS ONLY
- S.R.O. - SURFACE RIGHTS ONLY
- M.+S. - MINING AND SURFACE RIGHTS

Description	Order No.	Date	Disposition	File
SEC 43/70	W 65/76	19/11/76	S.R.O.	189521

SAND and GRAVEL

M.R. GRAVEL RESERVE	10-2
"	10-9
"	10-10
"	10-12
"	10-11
"	10-13
"	10-16
GRAVEL FILE	163473
GRAVEL PIT	

EFFECTIVE DATE



AREA
MARK LAKE
M.N.R. ADMINISTRATIVE DISTRICT
KENORA
MINING DIVISION
KENORA
LAND TITLES / REGISTRY DIVISION
KENORA

Ministry of Natural Resources
Land Management Branch
Ontario

Date FEBRUARY, 1984
Number
M-2065
G-2629

DATE OF ISSUE
FEB 09 1988
PROVINCIAL RECORDING
OFFICE - SUDBURY

G2629

KENORA
MINING DIVISION

SCALE: 1-INCH = 40 CHAINS

LEGEND

PATENTED LAND
PATENTED FOR SURFACE RIGHTS ONLY
LEASES
LICENSE OF OCCUPATION
CROWN LAND SALE
LOCATED LAND
CANCELLED
MINING RIGHTS ONLY
SURFACE RIGHTS ONLY
HIGHWAY & ROUTE No.
ROADS
TRAILS
RAILWAYS
POWER LINES
MARSH OR MUSKEG
MINES

*used only with summer resort locations or when space is limited

NOTES

400' Surface Rights Reservation Around the Shores of All Lakes and Rivers

KENORA
 FILED:
 REC'D. MAR - 8 1971
 RECEIPT No.
 MINING DIVISION

* SURFACE RIGHTS ONLY WITHDRAWN FROM
PROSPECTING, STAKING OUT, SALE OR
LEASE - ORDER NO. W.65/76

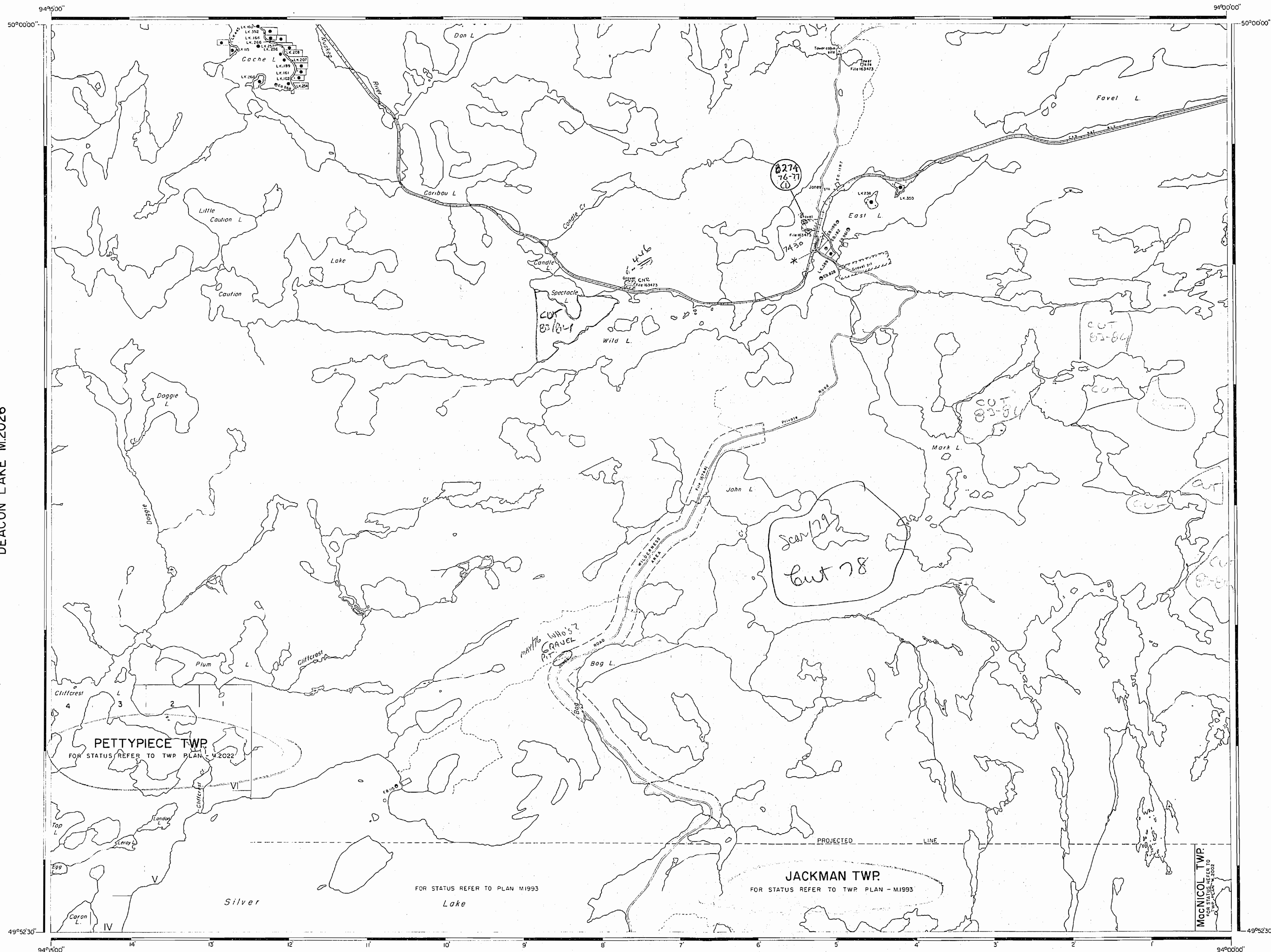
Obsolete Oct. 2/84

NATIONAL TOPOGRAPHIC SERIES 52-E-16

PLAN NO. M.2065

**ONTARIO
DEPARTMENT OF MINES
AND NORTHERN AFFAIRS**

WONDERLAND LAKE M.1977



DEACON LAKE M.2026

DANIELS LAKE M.1958