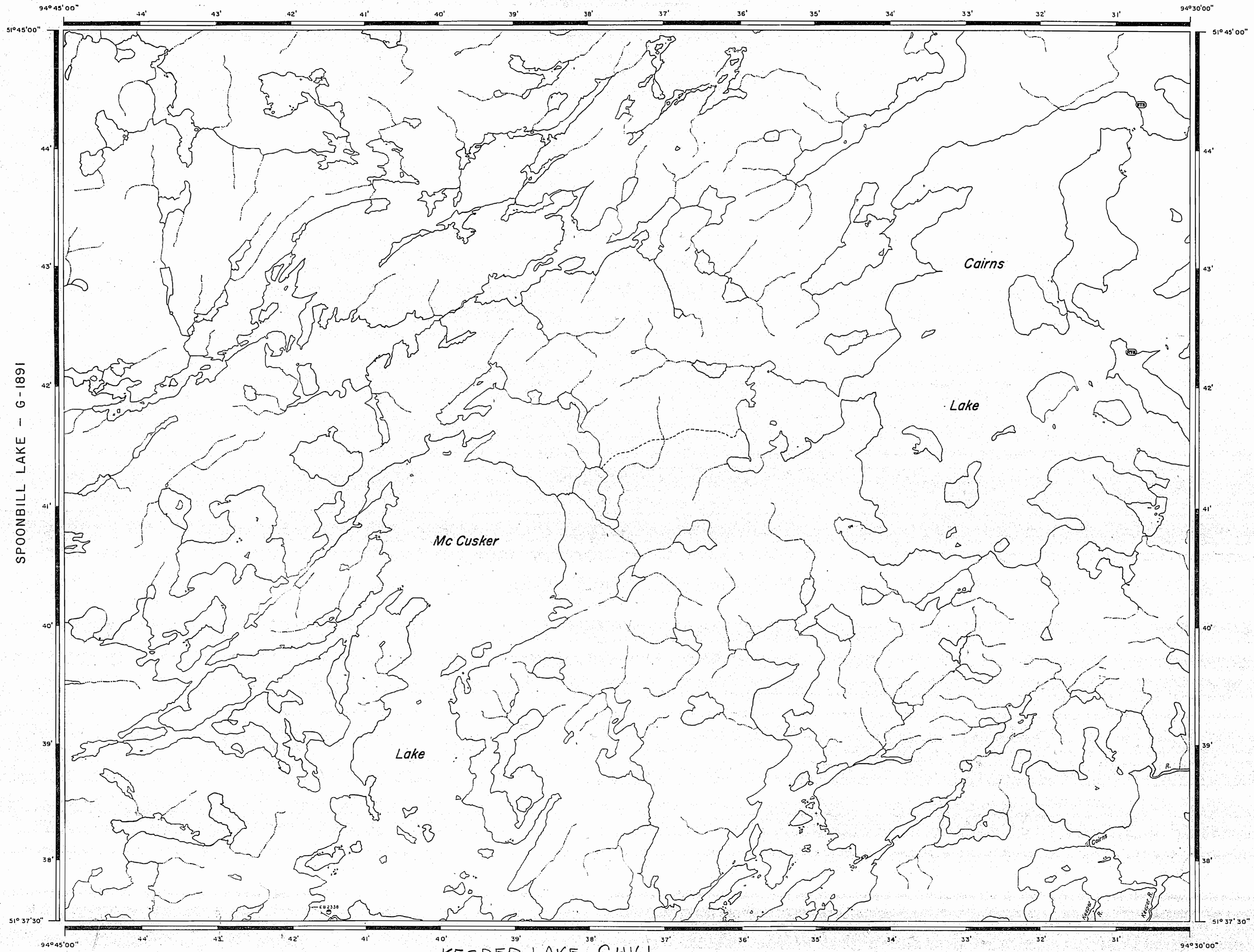


REFERENCES

AREAS WITHDRAWN FROM DISPOSITION

M.R.O. - MINING RIGHTS ONLY
 S.R.O. - SURFACE RIGHTS ONLY
 M.+S. - MINING AND SURFACE RIGHTS

Description	Order No.	Date	Disposition	File



SPOONBILL LAKE - G-1891

KEEPER LAKE G4161

REFERENCES

TOPOGRAPHY

LAKES, RIVERS, ETC. FROM FOREST RESOURCES INVENTORY SHEET NO 516 943.



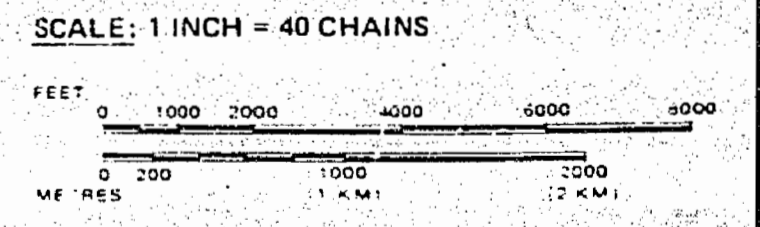
THE INFORMATION THAT APPEARS ON THIS MAP HAS BEEN COMPILED FROM VARIOUS SOURCES, AND ACCURACY IS NOT GUARANTEED. THOSE WISHING TO STAKE MINING CLAIMS SHOULD CONSULT WITH THE MINING RECORDER, MINISTRY OF NORTHERN DEVELOPMENT AND MINES, FOR ADDITIONAL INFORMATION ON THE STATUS OF THE LANDS SHOWN HEREON.

LEGEND

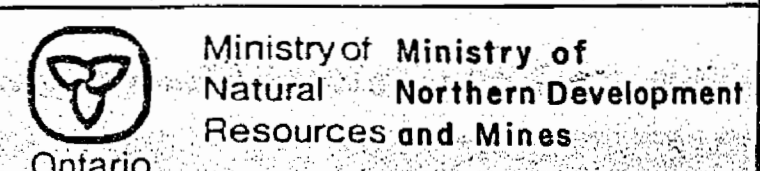
- HIGHWAY AND ROUTE No.
- OTHER ROADS
- TRAILS
- SURVEYED LINES:
 - TOWNSHIPS, BASE LINES, ETC.
 - LOTS, MINING CLAIMS, PARCELS, ETC.
- UNSURVEYED LINES:
 - LOT LINES
 - PARCEL BOUNDARY
 - MINING CLAIMS ETC.
- RAILWAY AND RIGHT OF WAY
- UTILITY LINES
- NON-PERENNIAL STREAM
- FLOODING OR FLOODING RIGHTS
- SUBDIVISION OR COMPOSITE PLAN RESERVATIONS
- ORIGINAL SHORELINE
- MARSH OR MUSKEG
- MINES
- TRAVERSE MONUMENT
- REMOTE TOURISM SITE

DISPOSITION OF CROWN LANDS

TYPE OF DOCUMENT	SYMBOL
PATENT, SURFACE & MINING RIGHTS	
" SURFACE RIGHTS ONLY	
" MINING RIGHTS ONLY	
LEASE, SURFACE & MINING RIGHTS	
" SURFACE RIGHTS ONLY	
" MINING RIGHTS ONLY	
LICENCE OF OCCUPATION	
ORDER-IN-COUNCIL	
RESERVATION	
CANCELLED	
SAND & GRAVEL	



AREA
Mc CUSKER LAKE
 M.N.R. ADMINISTRATIVE DISTRICT
RED LAKE
 MINING DIVISION
RED LAKE
 LAND TITLES / REGISTRY DIVISION
KENORA / PATRICIA

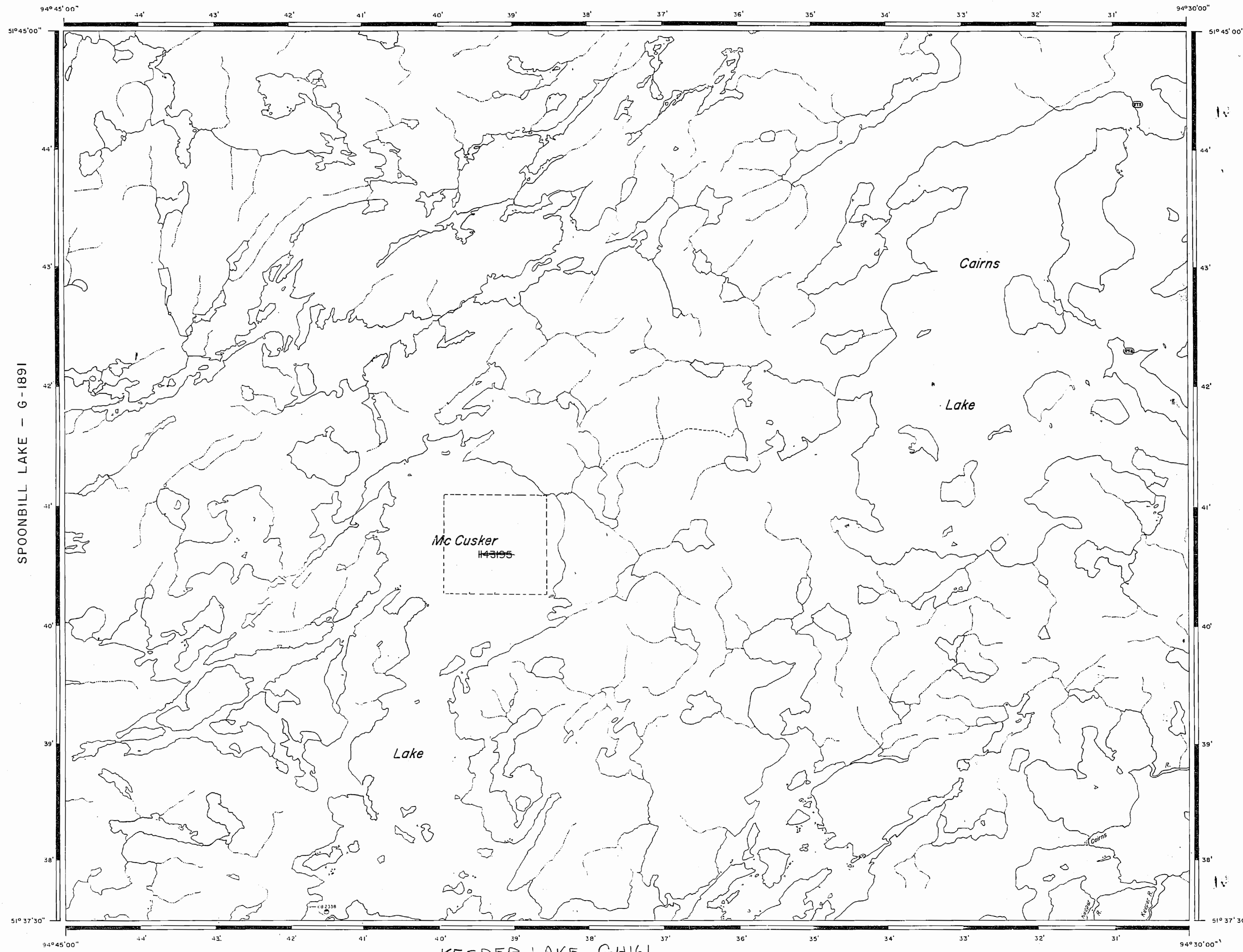


Date: AUGUST 1986
 Number: **G-1923**

REFERENCES

AREAS WITHDRAWN FROM DISPOSITION

Description	Order No.	Date	Disposition	File
M.R.O. MINING RIGHTS ONLY				
S.R.O. SURFACE RIGHTS ONLY				
M.S. MINING AND SURFACE RIGHTS				



SPOONBILL LAKE - G-1891

KEEPER LAKE G4161

REFERENCES

TOPOGRAPHY

LAKES, RIVERS, ETC. FROM FOREST RESOURCES INVENTORY SHEET N° 516 943.

DATE OF ISSUE

JAN 23 1938

PROVINCIAL RECORDING OFFICE - SUDBURY

THE INFORMATION THAT APPEARS ON THIS MAP HAS BEEN COMPILED FROM VARIOUS SOURCES, AND ACCURACY IS NOT GUARANTEED. THOSE WISHING TO STAKE MINING CLAIMS SHOULD CONSULT WITH THE MINING RECORDER, MINISTRY OF NORTHERN DEVELOPMENT AND MINES, FOR ADDITIONAL INFORMATION ON THE STATUS OF THE LANDS SHOWN HEREON.

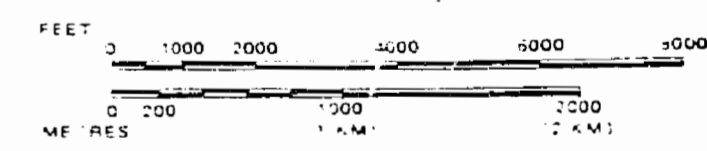
LEGEND

HIGHWAY AND ROUTE NO	
OTHER ROADS	
TRAILS	
SURVEYED LINES:	
TOWNSHIPS, BASE LINES, ETC.	
LOTS, MINING CLAIMS, PARCELS, ETC.	
UNSURVEYED LINES:	
LOT LINES	
PARCEL BOUNDARY	
MINING CLAIMS ETC.	
RAILWAY AND RIGHT OF WAY	
UTILITY LINES	
NON-PERENNIAL STREAM	
FLOODING OR FLOODING RIGHTS	
SUBDIVISION OR COMPOSITE PLAN	
RESERVATIONS	
ORIGINAL SHORELINE	
MARSH OR MUSKEG	
MINES	
TRAVERSE MONUMENT	
REMOTE TOURISM SITE	

DISPOSITION OF CROWN LANDS

TYPE OF DOCUMENT	SYMBOL
PATENT, SURFACE & MINING RIGHTS	
" SURFACE RIGHTS ONLY	
" MINING RIGHTS ONLY	
LEASE, SURFACE & MINING RIGHTS	
" SURFACE RIGHTS ONLY	
" MINING RIGHTS ONLY	
LICENCE OF OCCUPATION	
ORDER-IN-COUNCIL	
RESERVATION	
CANCELLED	
SAND & GRAVEL	

SCALE: 1 INCH = 40 CHAINS



AREA
Mc CUSKER LAKE
 M.N.R. ADMINISTRATIVE DISTRICT
RED LAKE
 MINING DIVISION
RED LAKE
 LAND TITLES / REGISTRY DIVISION
KENORA / PATRICIA

Ministry of Natural Resources and Mines
 Ontario

Date AUGUST 1938
 Number **G-1923**