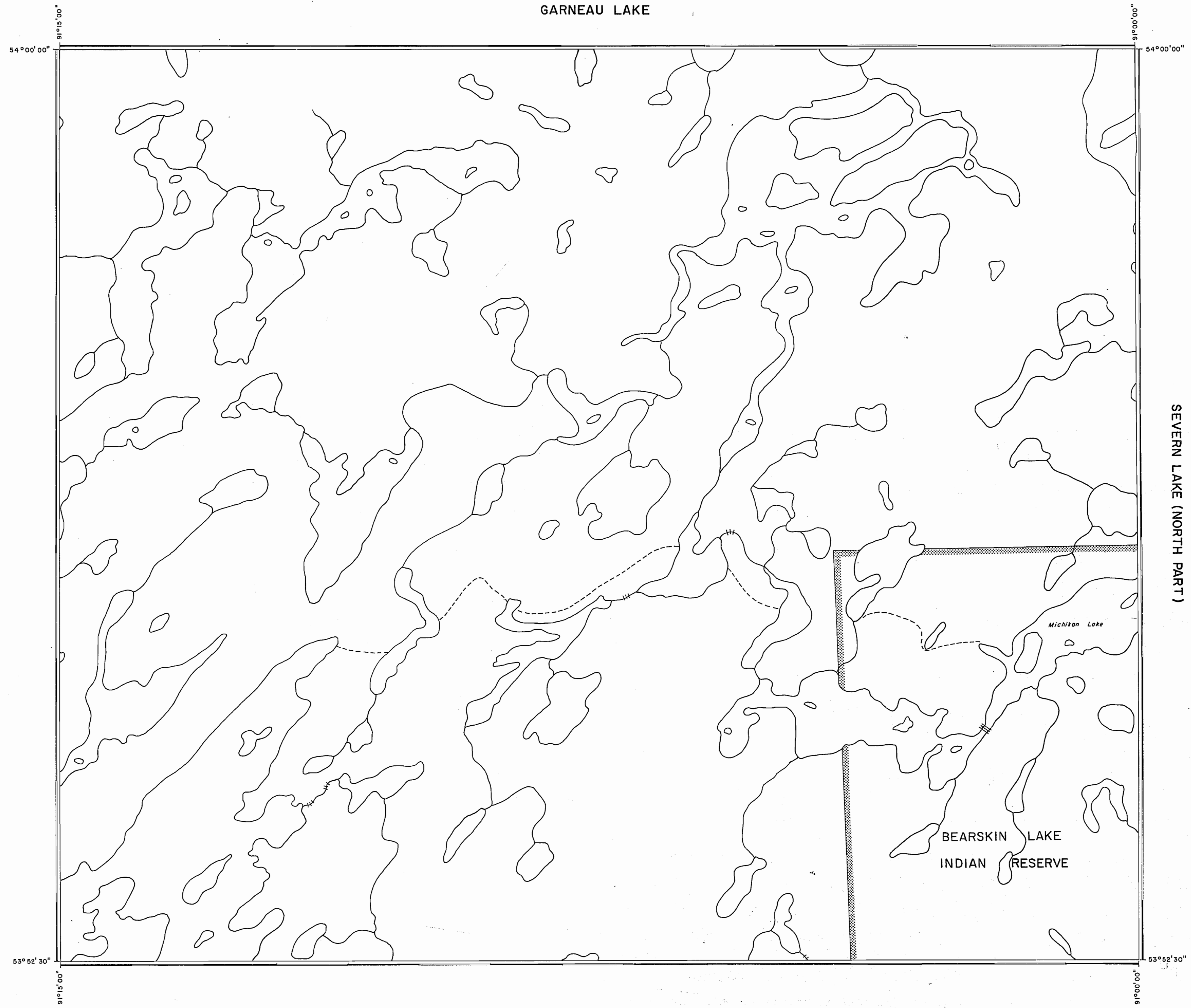


AREAS WITHDRAWN FROM DISPOSITION

M.R.O. - MINING RIGHTS ONLY
 S.R.O. - SURFACE RIGHTS ONLY
 M.+S. - MINING AND SURFACE RIGHTS

Description	Order No.	Date	Disposition	File

GARNEAU LAKE

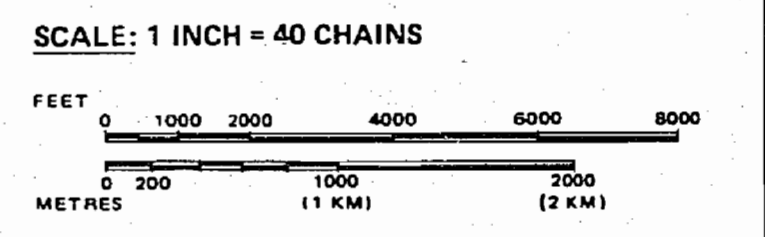


LEGEND

- HIGHWAY AND ROUTE No.
- OTHER ROADS
- TRAILS
- SURVEYED LINES:
 - TOWNSHIPS, BASE LINES, ETC.
 - LOTS, MINING CLAIMS, PARCELS, ETC.
- UNSURVEYED LINES:
 - LOT LINES
 - PARCEL BOUNDARY
 - MINING CLAIMS ETC.
- RAILWAY AND RIGHT OF WAY
- UTILITY LINES
- NON-PERENNIAL STREAM
- FLOODING OR FLOODING RIGHTS
- SUBDIVISION OR COMPOSITE PLAN
- RESERVATIONS
- ORIGINAL SHORELINE
- MARSH OR MUSKEG
- MINES
- TRAVERSE MONUMENT

DISPOSITION OF CROWN LANDS

TYPE OF DOCUMENT	SYMBOL
PATENT, SURFACE & MINING RIGHTS	
" SURFACE RIGHTS ONLY	
" MINING RIGHTS ONLY	
LEASE, SURFACE & MINING RIGHTS	
" SURFACE RIGHTS ONLY	
" MINING RIGHTS ONLY	
LICENCE OF OCCUPATION	
ORDER-IN-COUNCIL	
RESERVATION	
CANCELLED	
SAND & GRAVEL	



RECEIVED
 RED LAKE MINING DIV.
 SEP 20 1993
 AM 10:00 PM 10:00

AREA
MICHIKAN LAKE
 M.N.R. ADMINISTRATIVE DISTRICT
 SIOUX LOOKOUT
 MINING DIVISION
 RED LAKE
 LAND TITLES / REGISTRY DIVISION
 KENORA

Ministry of Natural Resources Ontario
 Ministry of Northern Development and Mines

Date: OCTOBER 1990
 Number: **G-1946**

SEVERN LAKE (NORTH PART)