

Notes

HIGHWAYS

HIGHWAY No 11 FROM D.H.O PLANS No. P-2544-1
P-2443-4 & P-2544-77.

RAILWAYS

CANADIAN NATIONAL RAILWAYS 100' R/W BY
R. GOURLAY OLS, 1912,
PLAN No. S-2-9.

TRANSMISSION LINES

H.E.P.C TRANSMISSION LINE 100' R/W BY
R.S. KIRKUP OLS, 1948,
PLAN No. M-26-10.

PIPE LINES

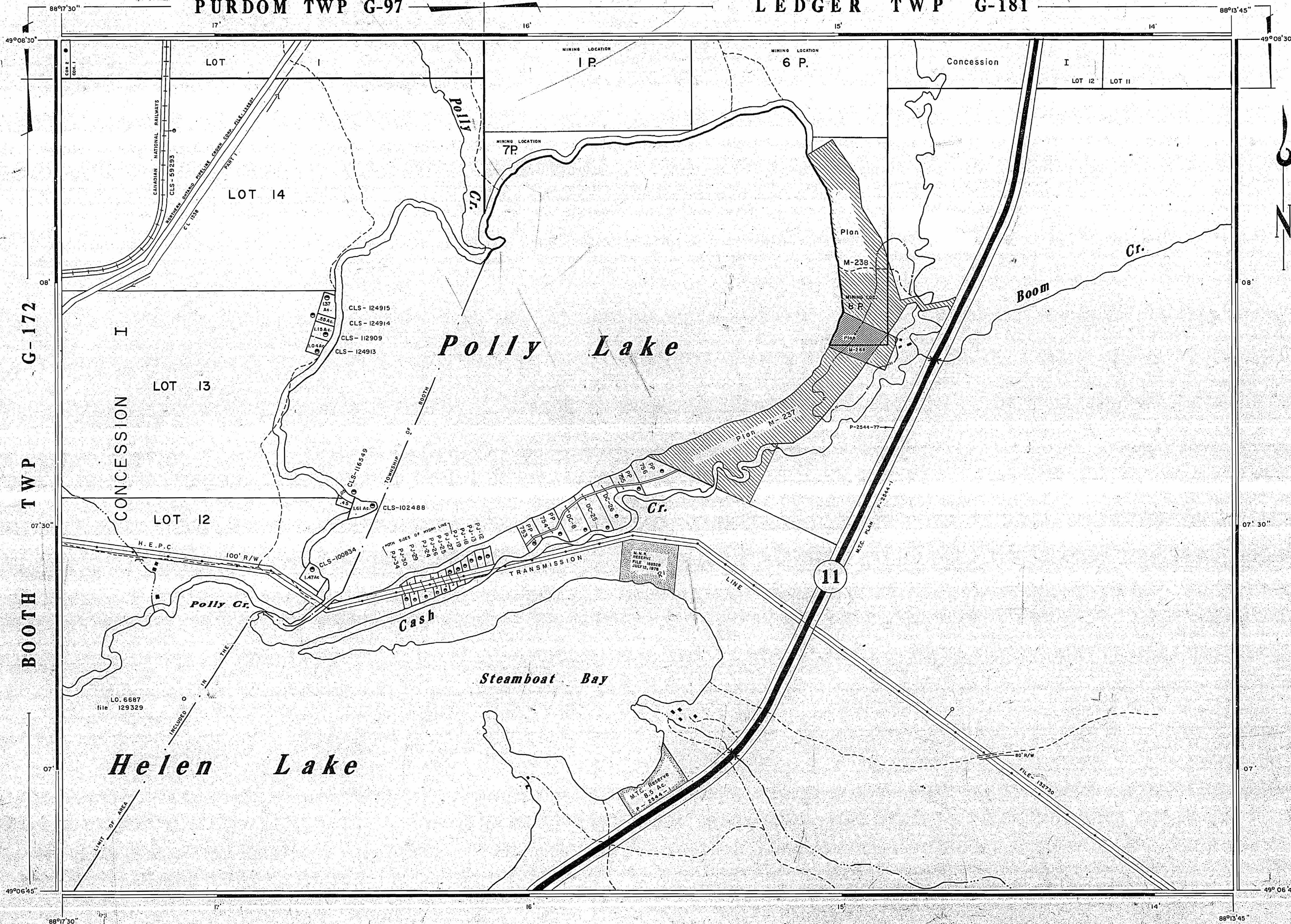
NORTHERN ONTARIO PIPELINE CROWN CORP.
65' R/W BY J. PRYSTANSKI OLS, 1958
PLAN No. W-2-44.

THE INFORMATION THAT APPEARS ON THIS MAP HAS BEEN COMPILED FROM VARIOUS SOURCES, AND ACCURACY IS NOT GUARANTEED. THOSE WISHING TO STAKE MINING CLAIMS SHOULD CONSULT WITH THE MINING RECORDER, MINISTRY OF NORTHERN DEVELOPMENT AND MINES, FOR ADDITIONAL INFORMATION ON THE STATUS OF THE LANDS SHOWN HEREON.

FOR STATUS OF CROWN LANDS
SEE

PURDOM TWP G-97

LEDGER TWP G-181



Notes

TOPOGRAPHY

LAKES, RIVERS ETC. FROM FOREST RESOURCES
INVENTORY SHEETS 492-881,882, & 491-881,882

SURVEYS

SOUTH LIMIT OF LEDGER TWP. BY T.B. SPEIGHT
O.L.S., 1894,
FIELD NOTE BOOK No. 1394,
PURDOM AND BOOTH TWP. BY B.J. SAUNDERS
O.L.S., 1892 & 93,
FIELD NOTE BOOKS 1665 & 968,
MINING LOCATIONS IP, 6P, 7P, & 8P, BY Wm. PEARCE
P.L.S. 1873, file 117/74,
FIELD NOTES (in envelope No. 18534 under Ledger Twp)
R.I. - S.T.A.R. WITHDRAWN - SEE NIPIGON TWP 185.

LEGEND

- HIGHWAY AND ROUTE No.
- OTHER ROADS
- TRAILS
- SURVEYED LINES:
- TOWNSHIPS, BASE LINES, ETC.
- LOTS, MINING CLAIMS, PARCELS, ETC.
- UNSURVEYED LINES:
- LOT LINES
- PARCEL BOUNDARY
- MINING CLAIMS ETC.
- RAILWAY AND RIGHT OF WAY
- UTILITY LINES
- NON-PERENNIAL STREAM
- FLOODING OR FLOODING RIGHTS
- SUBDIVISION OR COMPOSITE PLAN
- RESERVATIONS
- ORIGINAL SHORELINE
- MARSH OR MUSKEG
- MINES
- TRAVERSE MONUMENT
- LAND USE PERMITS FOR COMMERCIAL TOURISM, OUTPOST CAMPS

DISPOSITION OF CROWN LANDS

TYPE OF DOCUMENT	SYMBOL
PATENT, SURFACE & MINING RIGHTS	
" SURFACE RIGHTS ONLY	
" MINING RIGHTS ONLY	
LEASE, SURFACE & MINING RIGHTS	
" SURFACE RIGHTS ONLY	
" MINING RIGHTS ONLY	
LICENCE OF OCCUPATION	
ORDER-IN-COUNCIL	
RESERVATION	
CANCELLED	
SAND & GRAVEL	

NOTE: MINING RIGHTS IN PARCELS PATENTED PRIOR TO MAY 6, 1913, VESTED IN ORIGINAL PATENTEE BY THE PUBLIC LANDS ACT, R.S.O. 1970, CHAP. 380, SEC. 63, SUBSEC. 1.

Scale: 1 in.: 10 ch.

AREA
POLLY LAKE
M.N.R. ADMINISTRATIVE DISTRICT
NIPIGON
MINING DIVISION
THUNDER BAY
LAND TITLES / REGISTRY DIVISION
THUNDER BAY

Ministry of Natural Resources
Land Management Branch
Ontario
Date: MARCH 1981
AIR 24/18/81
G-115