

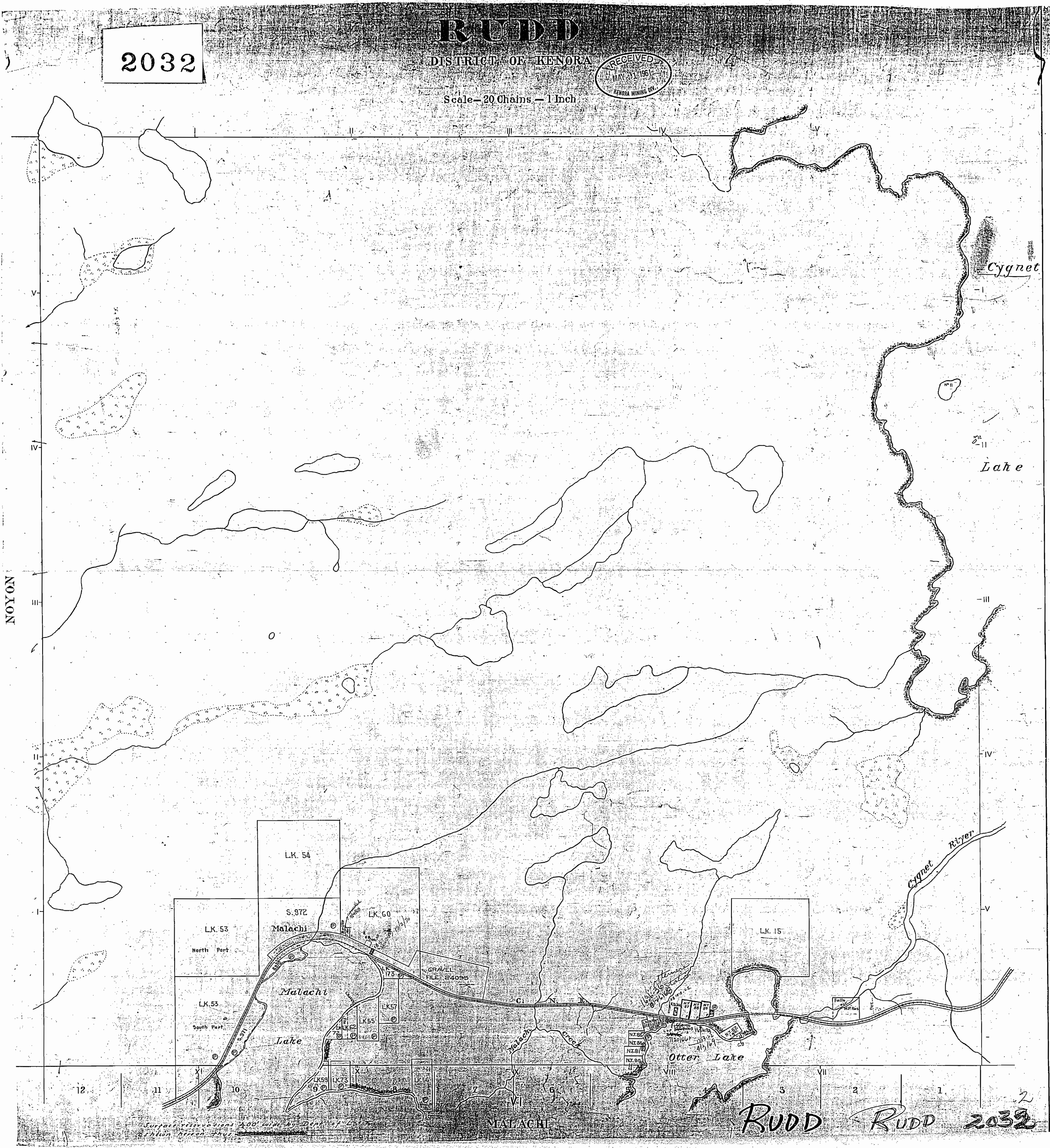
2032

# RUDD

DISTRICT OF KENORA

RECEIVED  
MAY 11 1951  
KENORA MINING DIV.

Scale - 20 Chains - 1 Inch



NOYON

Cygnet

Lake

Cygnet River

Otter Lake

MALACHI

RUDD RUDD 2032

# NOTES

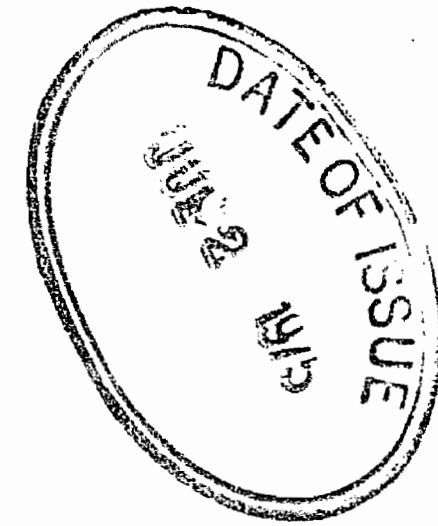
400' surface rights reservation along the shores of all lakes and rivers.

## SAND and GRAVEL

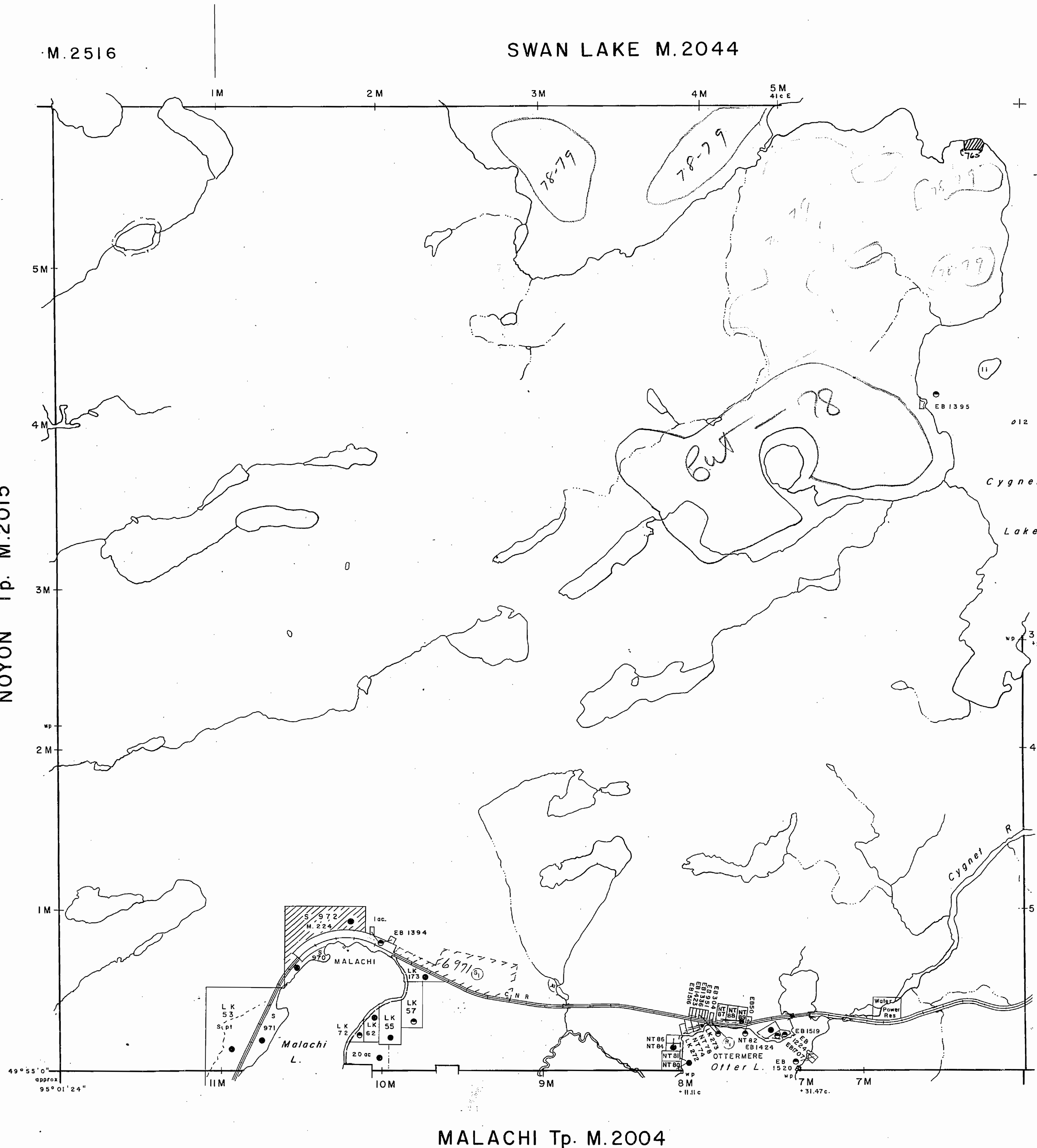
⑥ Gravel File. 24095

## RESERVES

⑦ Crown Reserve File. 50650



NOYON Tp. M.2015



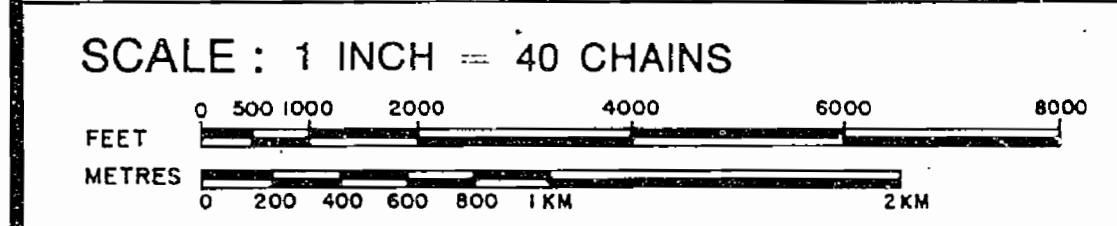
MALACHI Tp. M.2004

# LEGEND

HIGHWAY AND ROUTE No.	
OTHER ROADS	
TRAILS	
SURVEYED LINES:	
TOWNSHIPS, BASE LINES, ETC.	
LOTS, MINING CLAIMS, PARCELS, ETC.	
UNSURVEYED LINES:	
LOT LINES	
PARCEL BOUNDARY	
MINING CLAIMS ETC.	
RAILWAY AND RIGHT OF WAY	
UTILITY LINES	
NON-PERENNIAL STREAM	
FLOODING OR FLOODING RIGHTS	
SUBDIVISION	
ORIGINAL SHORELINE	
MARSH OR MUSKEG	
MINES	

## DISPOSITION OF CROWN LANDS

TYPE OF DOCUMENT	SYMBOL
PATENT, SURFACE & MINING RIGHTS	
" SURFACE RIGHTS ONLY	
" MINING RIGHTS ONLY	
LEASE, SURFACE & MINING RIGHTS	
" SURFACE RIGHTS ONLY	
" MINING RIGHTS ONLY	
LICENCE OF OCCUPATION	
CROWN LAND SALE	C.S.
ORDER-IN-COUNCIL	O.C.
RESERVATION	
CANCELLED	
SAND & GRAVEL	



ACRES	HECTARES
40	16

TOWNSHIP  
**RUDD**  
DISTRICT  
KENORA  
MINING DIVISION  
KENORA

Ministry of Natural Resources  
Ontario Surveys and Mapping Branch  
Date 4-75 Plan No. M.2032  
Whitney Block Queen's Park, Toronto

# NOTES

400' surface rights reservation along the shores of all lakes and rivers.

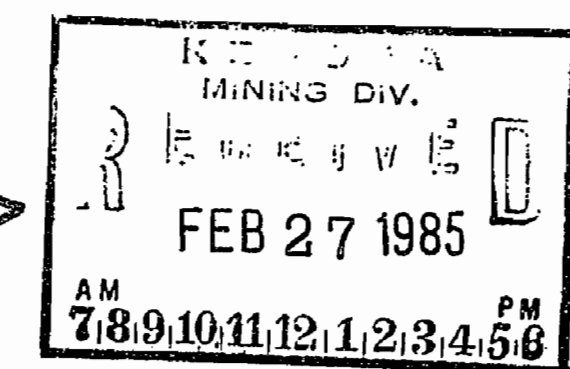
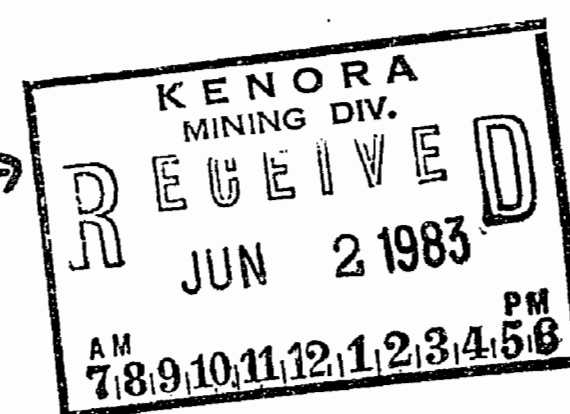
## SAND and GRAVEL

(4) Gravel File: 132396

## RESERVES

(R) Crown Reserve File: 50650

Linen effective →



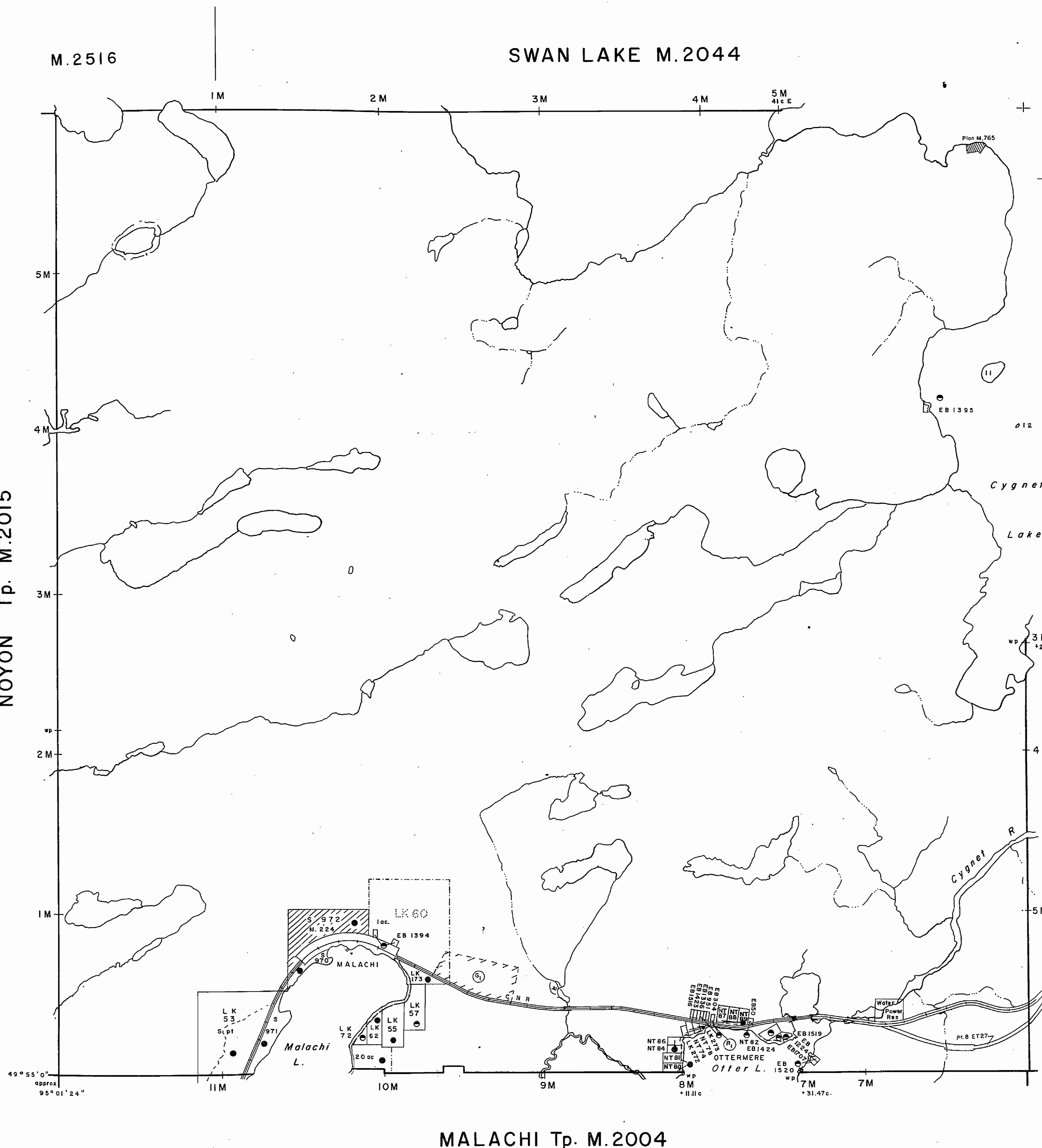
Obso/ete

M.2516

SWAN LAKE M.2044

NOYON Tp. M.2015

FOX LAKE M.2034



MALACHI Tp. M.2004

# LEGEND

HIGHWAY AND ROUTE No.	
OTHER ROADS	
TRAILS	
SURVEYED LINES:	
TOWNSHIPS, BASE LINES, ETC.	
LOTS, MINING CLAIMS, PARCELS, ETC.	
UNSURVEYED LINES:	
LOT LINES	
PARCEL BOUNDARY	
MINING CLAIMS ETC.	
RAILWAY AND RIGHT OF WAY	
UTILITY LINES	
NON-PERENNIAL STREAM	
FLOODING OR FLOODING RIGHTS	
SUBDIVISION	
ORIGINAL SHORELINE	
MARSH OR MUSKEG	
MINES	

## DISPOSITION OF CROWN LANDS

TYPE OF DOCUMENT	SYMBOL
PATENT, SURFACE & MINING RIGHTS	
" SURFACE RIGHTS ONLY	
" MINING RIGHTS ONLY	
LEASE, SURFACE & MINING RIGHTS	
" SURFACE RIGHTS ONLY	
" MINING RIGHTS ONLY	
LICENCE OF OCCUPATION	
CROWN LAND SALE	
ORDER-IN-COUNCIL	
RESERVATION	
CANCELLED	
SAND & GRAVEL	

SCALE : 1 INCH = 40 CHAINS

ACRES	HECTARES
40	16

TOWNSHIP  
**RUDD**  
DISTRICT  
KENORA  
MINING DIVISION  
KENORA

Ministry of Natural Resources  
Ontario Surveys and Mapping Branch  
Date 4.7.5  
Whitney Block  
Queen's Park, Toronto  
Plan No.  
**M.2032**

# NOTES

400' surface rights reservation along the shores of all lakes and rivers.

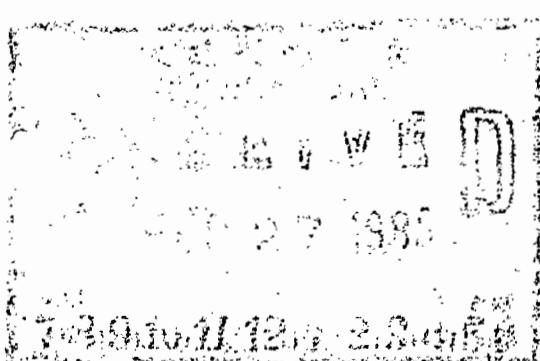
## SAND and GRAVEL

④ Gravel File: 132396

## RESERVES

⑤ Crown Reserve File: 50650

THE INFORMATION THAT APPEARS ON THIS MAP HAS BEEN COMPILED FROM VARIOUS SOURCES, AND ACCURACY IS NOT GUARANTEED. THOSE WISHING TO STAKE MINING CLAIMS SHOULD CONSULT WITH THE MINING RECORDER, MINISTRY OF NORTHERN DEVELOPMENT AND MINES, FOR ADDITIONAL INFORMATION ON THE STATUS OF THE LANDS SHOWN HEREON.



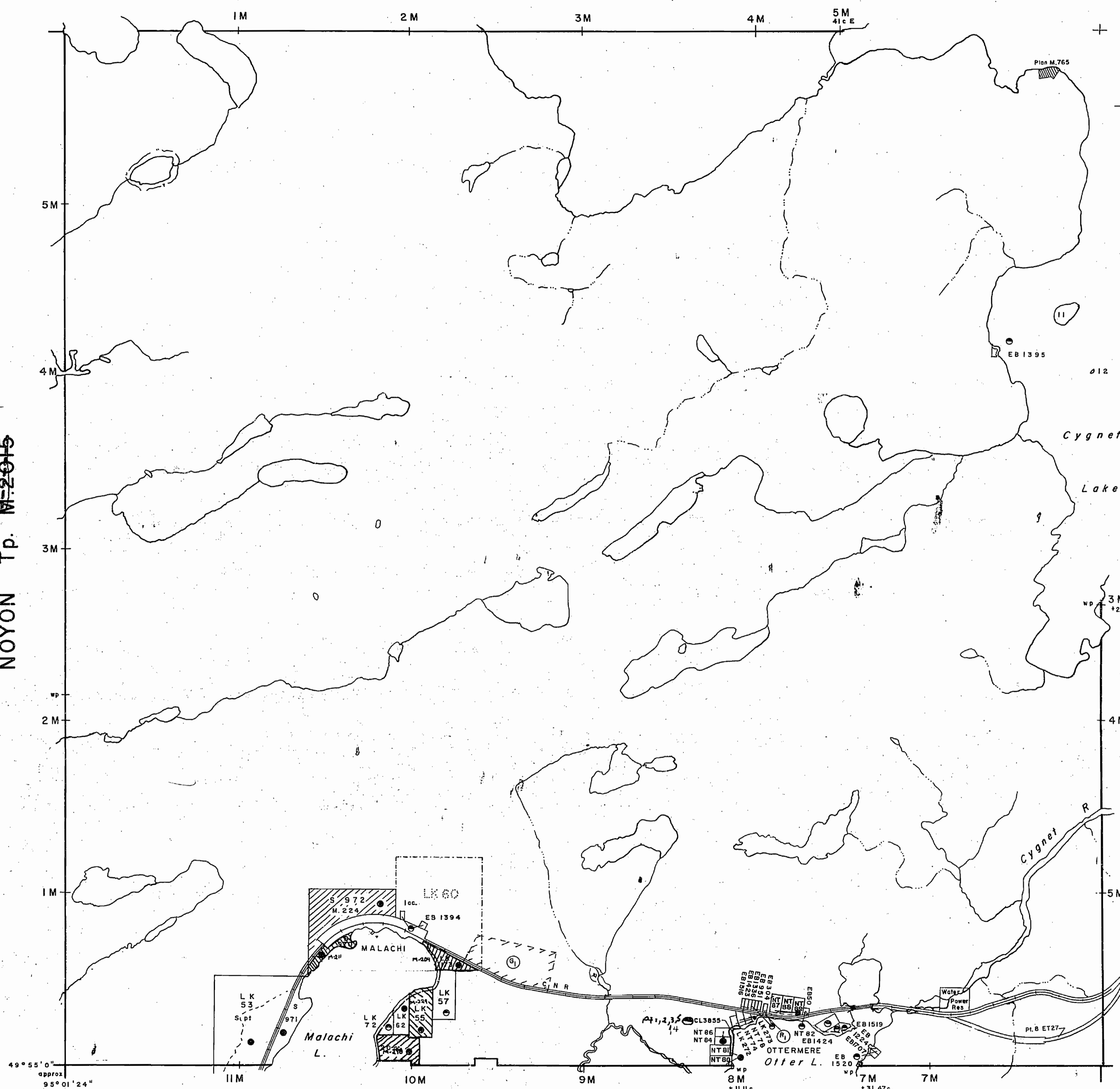
Effective as shown  
Feb 27/85

G2624  
M-2516

G2647  
SWAN LAKE M-2044

G1349  
NOYON Tp. M-2015

G2619  
FOX LAKE M-2034



G3185  
MALACHI Tp. M-2004

DATE OF ISSUE

SEP 30 1998

PROVINCIAL RECORDING  
OFFICE - SUDBURY

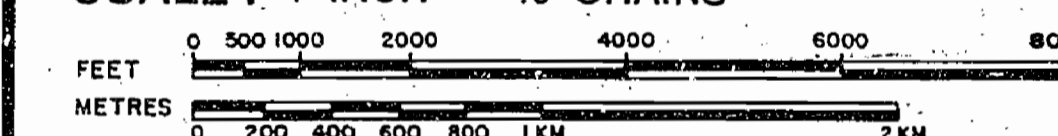
# LEGEND

HIGHWAY AND ROUTE No.	
OTHER ROADS	
TRAILS	
SURVEYED LINES:	
TOWNSHIPS, BASE LINES, ETC.	
LOTS, MINING CLAIMS, PARCELS, ETC.	
UNSURVEYED LINES:	
LOT LINES	
PARCEL BOUNDARY	
MINING CLAIMS ETC.	
RAILWAY AND RIGHT OF WAY	
UTILITY LINES	
NON-PERENNIAL STREAM	
FLOODING OR FLOODING RIGHTS	
SUBDIVISION	
ORIGINAL SHORELINE	
MARSH OR MUSKEG	
MINES	

# DISPOSITION OF CROWN LANDS

TYPE OF DOCUMENT	SYMBOL
PATENT, SURFACE & MINING RIGHTS	
" SURFACE RIGHTS ONLY	
" MINING RIGHTS ONLY	
LEASE, SURFACE & MINING RIGHTS	
" SURFACE RIGHTS ONLY	
" MINING RIGHTS ONLY	
LICENCE OF OCCUPATION	
CROWN LAND SALE	
ORDER-IN-COUNCIL	
RESERVATION	
CANCELLED	
SAND & GRAVEL	

SCALE: 1 INCH = 40 CHAINS



ACRES HECTARES

40 16

TOWNSHIP

**RUDD**

DISTRICT

**KENORA**

MINING DIVISION

**KENORA**



Ministry of Natural  
Resources

Ontario Surveys and Mapping Branch

Date

4-75

Plan No.

Whitney Block  
Queen's Park, Toronto

**M.2032**

**G-1356**

8027

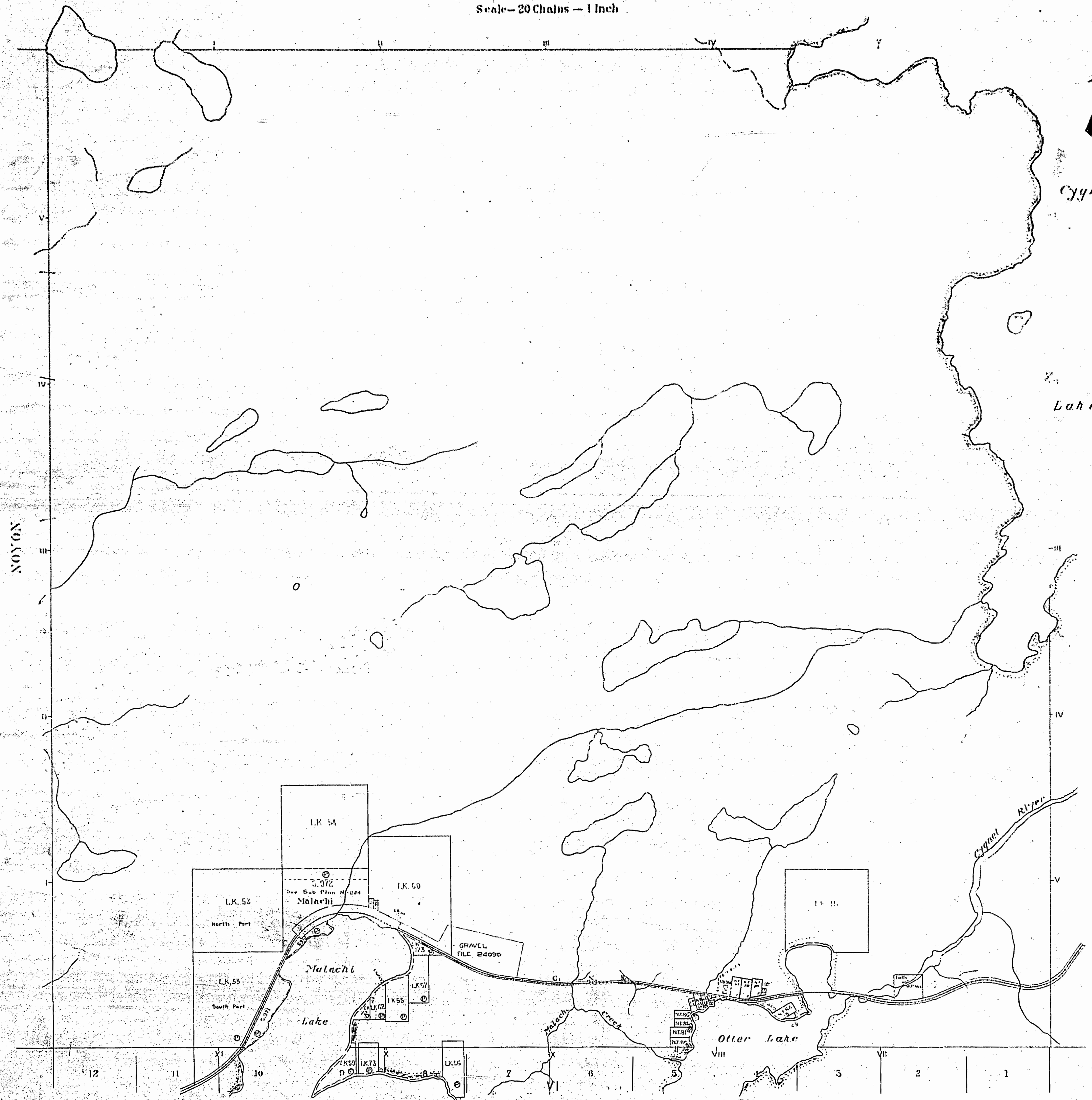
SCHEMATIC

M2032

# RUDD

DISTRICT OF KENORA

Scale - 20 Chains - 1 Inch



Surface reservations 400' wide by Dept. of L. & R.  
shown herein thus

MALACHI

RUDD 2032

# NOTES

400' surface rights reservation along the shores of all lakes and rivers.

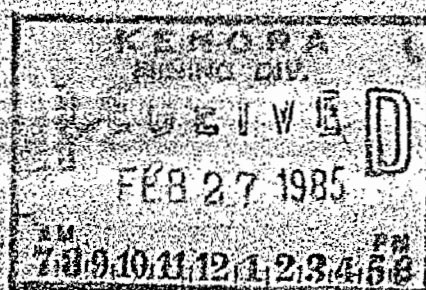
## SAND and GRAVEL

① Gravel File: 132396

## RESERVES

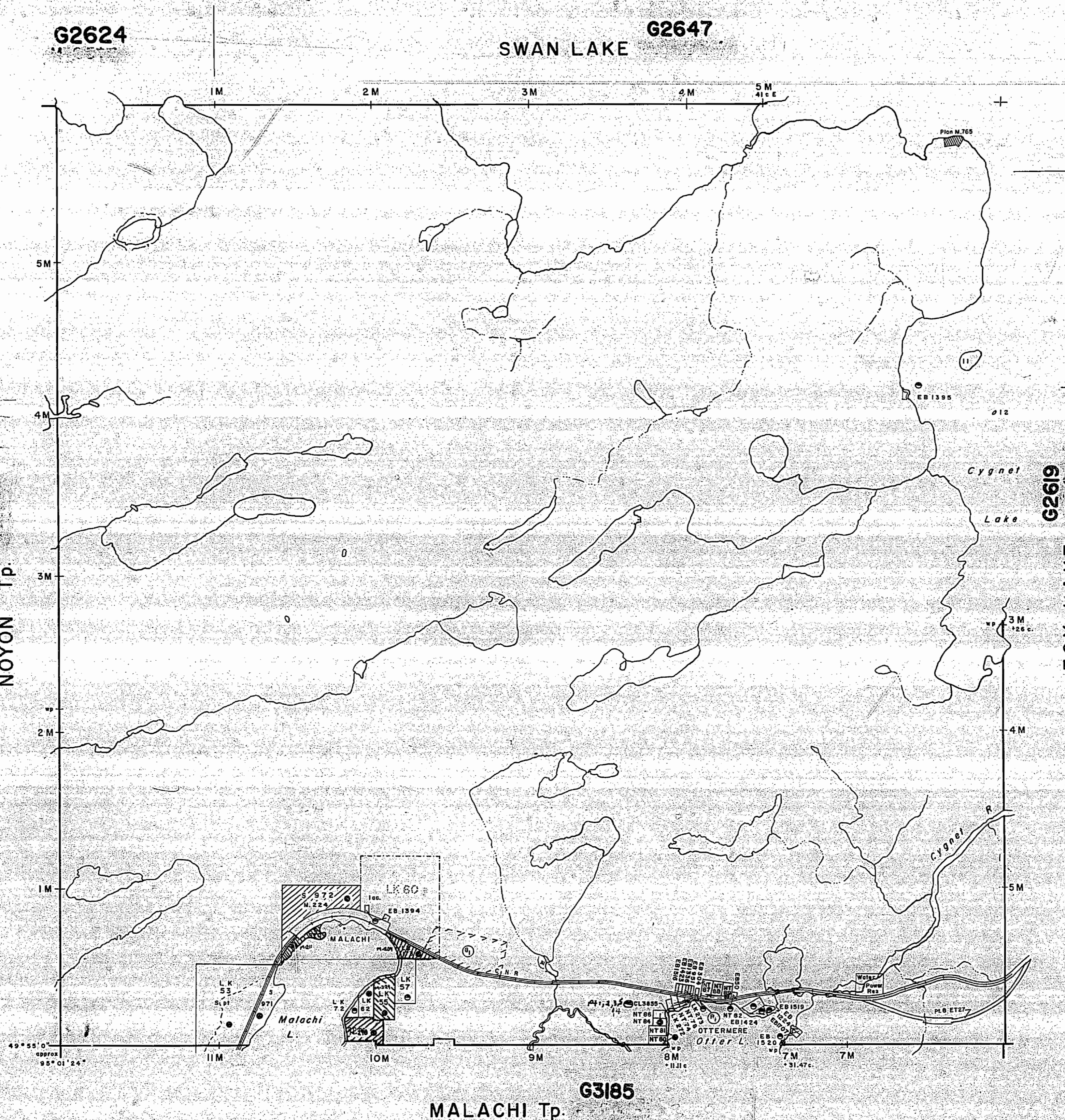
② Crown Reserve File: 50650

THE INFORMATION THAT APPEARS ON THIS MAP HAS BEEN COMPILED FROM VARIOUS SOURCES, AND ACCURACY IS NOT GUARANTEED. THOSE WISHING TO STAKE MINING CLAIMS SHOULD CONSULT WITH THE MINING RECORDER, MINISTRY OF NORTHERN DEVELOPMENT AND MINES, FOR ADDITIONAL INFORMATION ON THE STATUS OF THE LANDS SHOWN HEREON.



Effective as linen Feb 27/85

NOYON Tp.



MALACHI Tp.

# LEGEND

HIGHWAY AND ROUTE No.	
OTHER ROADS	
TRAILS	
SURVEYED LINES:	
TOWNSHIPS, BASE LINES, ETC.	
LOTS, MINING CLAIMS, PARCELS, ETC.	
UNSURVEYED LINES:	
LOT LINES	
PARCEL BOUNDARY	
MINING CLAIMS ETC.	
RAILWAY AND RIGHT OF WAY	
UTILITY LINES	
NON-PERENNIAL STREAM	
FLOODING OR FLOODING RIGHTS	
SUBDIVISION	
ORIGINAL SHORELINE	
MARSH OR MUSKEG	
MINES	

## DISPOSITION OF CROWN LANDS

TYPE OF DOCUMENT	SYMBOL
PATENT, SURFACE & MINING RIGHTS	
" SURFACE RIGHTS ONLY	
" MINING RIGHTS ONLY	
LEASE, SURFACE & MINING RIGHTS	
" SURFACE RIGHTS ONLY	
" MINING RIGHTS ONLY	
LICENCE OF OCCUPATION	
CROWN LAND SALE	
ORDER-IN-COUNCIL	
RESERVATION	
CANCELLED	
SAND & GRAVEL	

SCALE: 1 INCH = 40 CHAINS

ACRES	HECTARES
40	16

TOWNSHIP  
**RUDD**  
DISTRICT  
KENORA  
MINING DIVISION  
KENORA

Ministry of Natural Resources  
Ontario Surveys and Mapping Branch

Date: 4.75 Plan No. M-2032

Whitney Block, Queen's Park, Toronto

G-1356

2032

KENORA MC DIV

M.2032

ONTARIO  
DEPARTMENT OF MINES  
AND NORTHERN AFFAIRS

# RUMBLE

DISTRICT OF KENORA

Scale—20 Chains.—1 Inch

*Cygnets*

*L a h e*

# NOYON

Cygnets River

Otter Lake

# MALACHI

Rudd 2032

Surface reservations 400' wide by Dept of L & F  
shown hereon thus ~~with reservation~~

2032

KENORA M.C. DIV.

M.2032

**RUDD**

DISTRICT OF KENORA

ONTARIO  
DEPARTMENT OF MINES  
AND NORTHERN AFFAIRS

Scale—20 Chains—1 Inch



Surface reservations 400 wide by Dept. of L.A.R.  
shown hereon this map

MALACHI

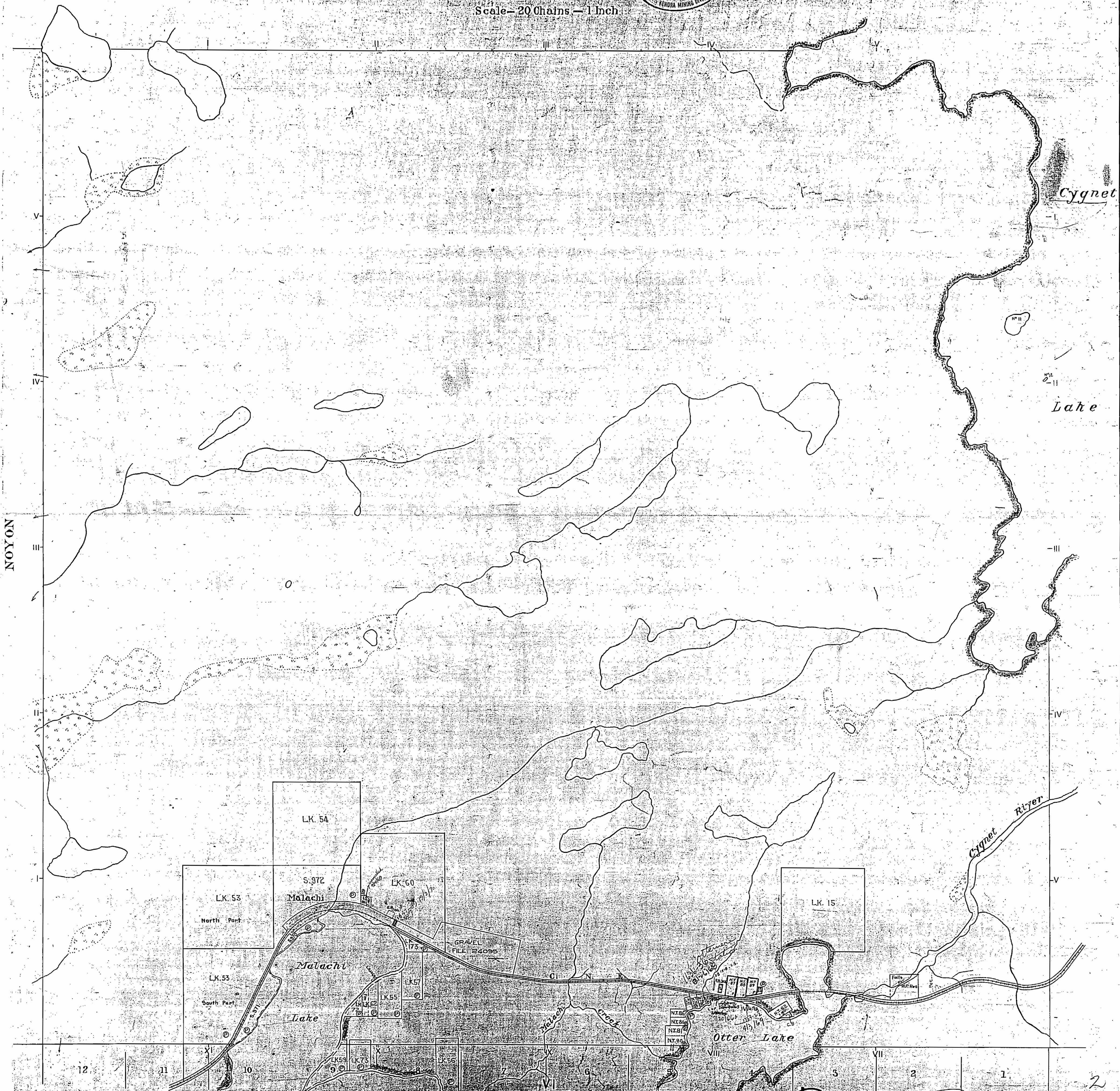
RUDD 2032

2032

RUDD

DISTRICT OF KENORA

Scale - 20 Chains - 1 Inch



RUDD RUDD 2032