

AREA OF
**STIRLAND
LAKE**

DISTRICT OF
KENORA
PATRICIA PORTION
RED LAKE
MINING DIVISION

SCALE: 1-INCH = 40 CHAINS

LEGEND

- PATENTED LAND Ⓟ or ●
- PATENTED FOR SURFACE RIGHTS ONLY Ⓞ
- LEASES Ⓛ
- LICENSE OF OCCUPATION Ⓛ.O.
- CROWN LAND SALE C.S.
- LOCATED LAND Loc.
- CANCELLED C.
- MINING RIGHTS ONLY M.R.O.
- SURFACE RIGHTS ONLY S.R.O.
- HIGHWAY & ROUTE No. Ⓜ
- ROADS —
- TRAILS - - -
- RAILWAYS =
- POWER LINES —
- MARSH OR MUSKEG Ⓜ
- MINES *

*used only with summer resort locations or when space is limited

NOTES

400' Surface Rights Reservation Around the Shores of All Lakes and Rivers

Areas withdrawn from staking under Section 43 of the Mining Act. (R.S.O. '70)

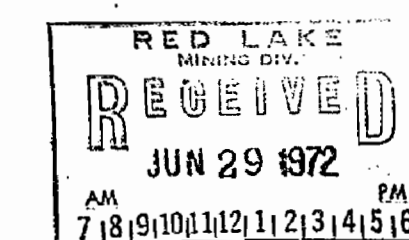
File	Date	Disposition
123032 Vol.16	FEB. 8/71	S.R.O.

ABOVE ORDER RECINDED MAY 18/73
ORDER NO. O. 10/73

SURFACE RIGHTS WITHDRAWN SECTION 43
ORDER NO. W. 38/74 JULY 12, 1974

SURFACE RIGHTS WITHDRAWN SECTION 43
ORDER NO. W. 15/78 MARCH 22, 1978

C-2226



NATIONAL TOPOGRAPHIC SERIES 53B6

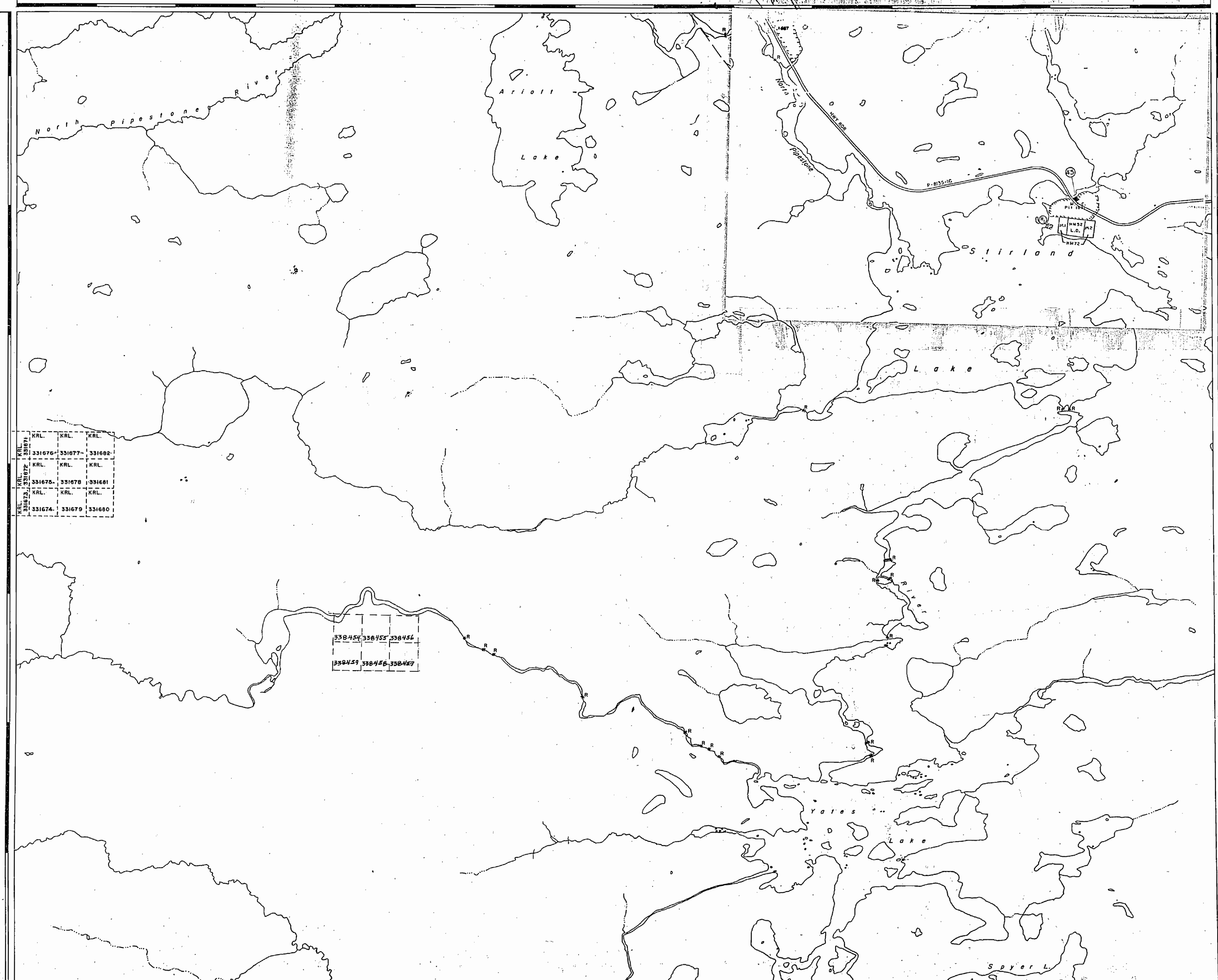
PLAN NO. **M.3319**

MINISTRY OF
NATURAL RESOURCES
ONTARIO

523911

VOLLETT LAKE M.3318

OUTLET BAY M.2717



KRL.	KRL.	KRL.
331676	331677	331682
KRL.	KRL.	KRL.
331675	331678	331681
KRL.	KRL.	KRL.
331674	331679	331680

338454	338455	338456
338457	338458	338459

FARMER LAKE G-2032

LEGEND

- HIGHWAY AND ROUTE No.
- OTHER ROADS
- TRAILS
- SURVEYED LINES:
 - TOWNSHIPS, BASE LINES, ETC.
 - LOTS, MINING CLAIMS, PARCELS, ETC.
- UNSURVEYED LINES:
 - LOT LINES
 - PARCEL BOUNDARY
 - MINING CLAIMS ETC.
- RAILWAY AND RIGHT OF WAY
- UTILITY LINES
- NON-PERENNIAL STREAM
- FLOODING OR FLOODING RIGHTS
- SUBDIVISION OR COMPOSITE PLAN RESERVATIONS
- ORIGINAL SHORELINE
- MARSH OR MUSKEG
- MINES
- TRAVERSE MONUMENT

DISPOSITION OF CROWN LANDS

TYPE OF DOCUMENT	SYMBOL
PATENT, SURFACE & MINING RIGHTS	
SURFACE RIGHTS ONLY	
MINING RIGHTS ONLY	
LEASE, SURFACE & MINING RIGHTS	
SURFACE RIGHTS ONLY	
MINING RIGHTS ONLY	
LICENCE OF OCCUPATION	
ORDER-IN-COUNCIL	
RESERVATION	
CANCELLED	
SAND & GRAVEL	

NOTE: MINING RIGHTS IN PARCELS PATENTED PRIOR TO MAY 6, 1913, VESTED IN ORIGINAL PATENTEE BY THE PUBLIC LANDS ACT, R.S.O. 1910, CHAP. 300, SEC. 53, SUBSEC. 1.

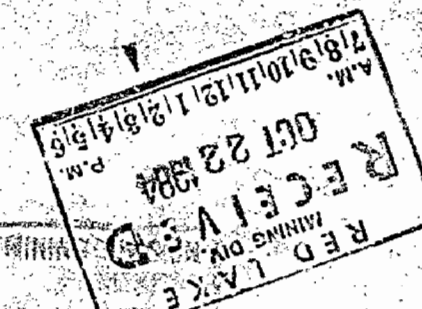
REFERENCES

AREAS WITHDRAWN FROM DISPOSITION

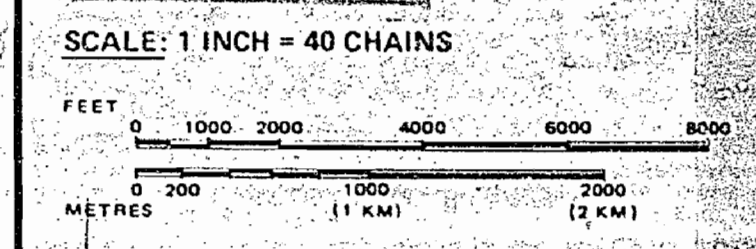
M.R.O. - MINING RIGHTS ONLY
 S.R.O. - SURFACE RIGHTS ONLY
 M + S. - MINING AND SURFACE RIGHTS

Description	Order No.	Date	Disposition	File
① W. 30/76	188539	12/7/76	S.R.O.	
②	40538-40	06/2/78	S.R.O.	
③ Public Lands Act		20/12/84	SRO	

LD 9479 @ 23 Oct 93



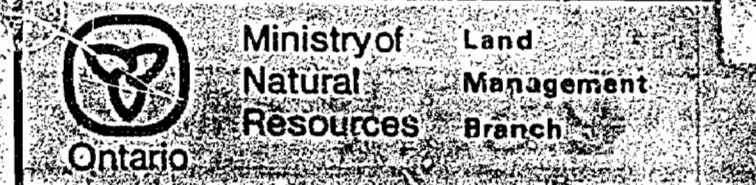
AREA IN WINDIGO TRIBAL COUNCIL PLANNING BOARD FOR DETAILS CALL 737-1585



THE INFORMATION THAT APPEARS ON THIS MAP HAS BEEN COMPILED FROM VARIOUS SOURCES AND ACCURACY IS NOT GUARANTEED. THOSE WISHING TO STAKE MINING CLAIMS SHOULD CONSULT WITH THE MINING RECORDER, MINISTRY OF NORTHERN DEVELOPMENT AND MINES FOR ADDITIONAL INFORMATION ON THE STATUS OF THE LANDS SHOWN HEREON.

AREA STIRLAND LAKE

M.N.R. ADMINISTRATIVE DISTRICT
 SIOUX LOOKOUT
 MINING DIVISION
 PATRICIA
 LAND TITLES / REGISTRY DIVISION
 KENORA (PATRICIA PORTION)



Date: JANUARY 1984 Number: **G-2226**

VOLLETT LAKE G-2242

HULSE LAKE G-2071

Area Not Mapped

G-2226