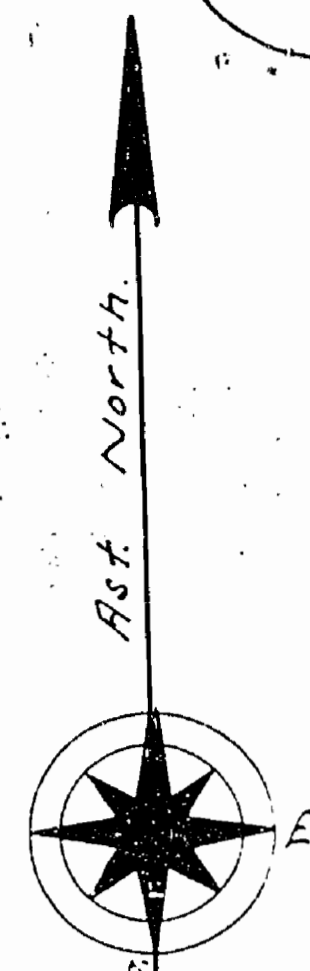


PLAN OF M.1380
G.3337 TWP. 2 A. (TWEEDLE)

SAULT STE. MARIE MINING DIVISION.
 DISTRICT OF ALGOMA.

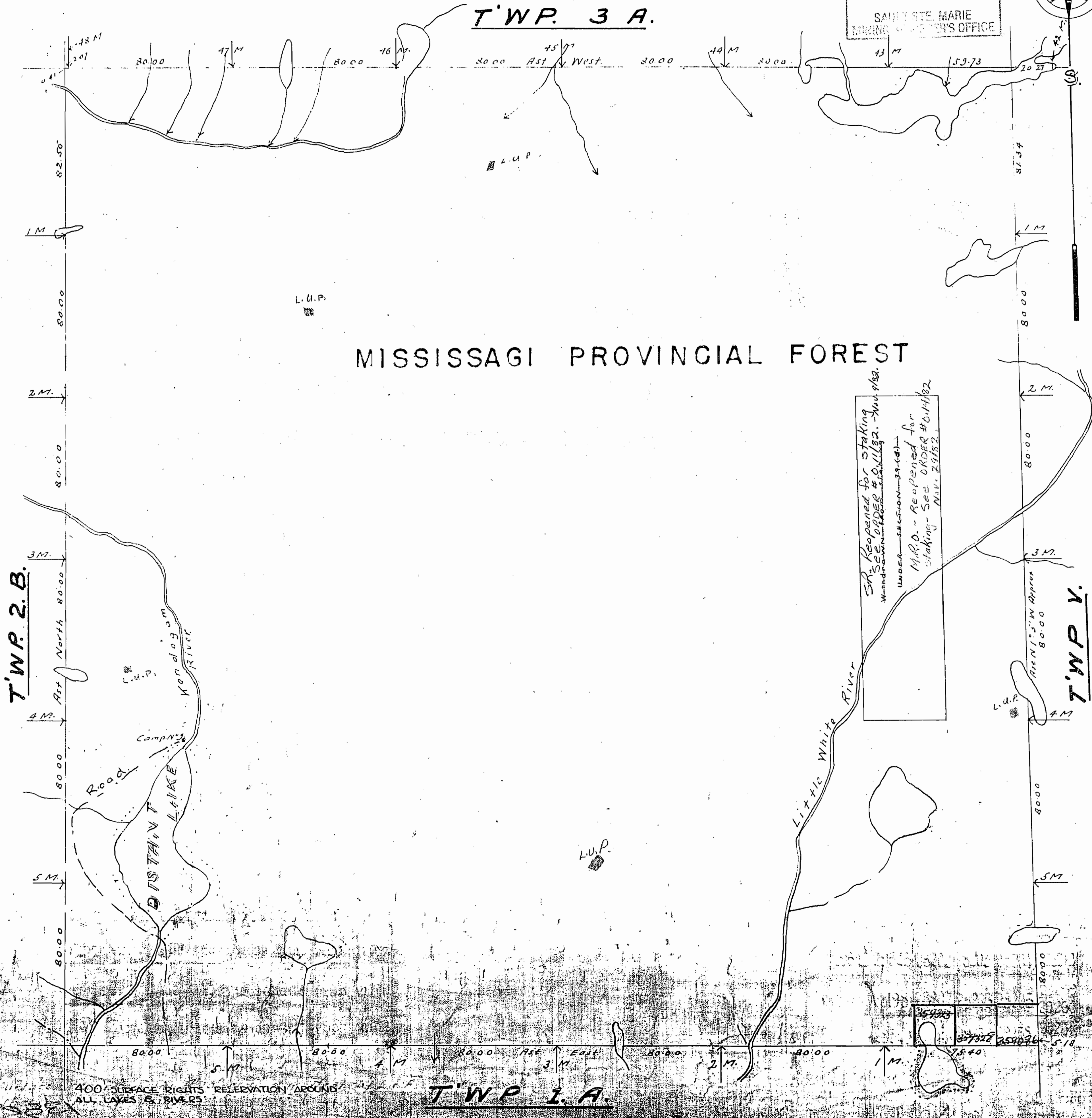
Scale, 40 chains to an inch.

DATE OF ISSUE
 SEP 24 1971
 SAULT STE. MARIE
 MINING DIVISION'S OFFICE



TWP. 3 A.

MISSISSAGI PROVINCIAL FOREST



SR Reopened for staking
 See ORDER # 01112. - Nov 182.
 Withdrawn from staking
 UNDER SECTION 39 (48)
 M.R.O. - Reopened for
 staking - See ORDER # 01112
 Nov. 29/52.

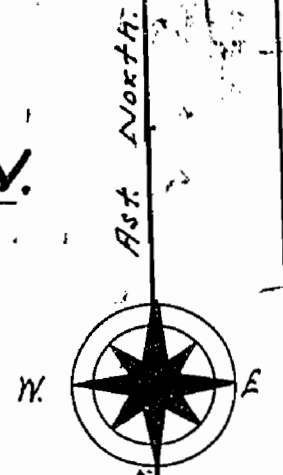
Replanned by Muller - 30/8/84

TWEEDLE TP. M.1380
G.3337 (Tp. 2A)

RECEIVED
SAULT STE. MARIE
1937 OCT 10
A.S. 11919 11920 11921 11922 11923

SAULT STE. MARIE MINING DIVISION.
DISTRICT OF ALGOMA.

—Scale, 40 chains to an inch.—

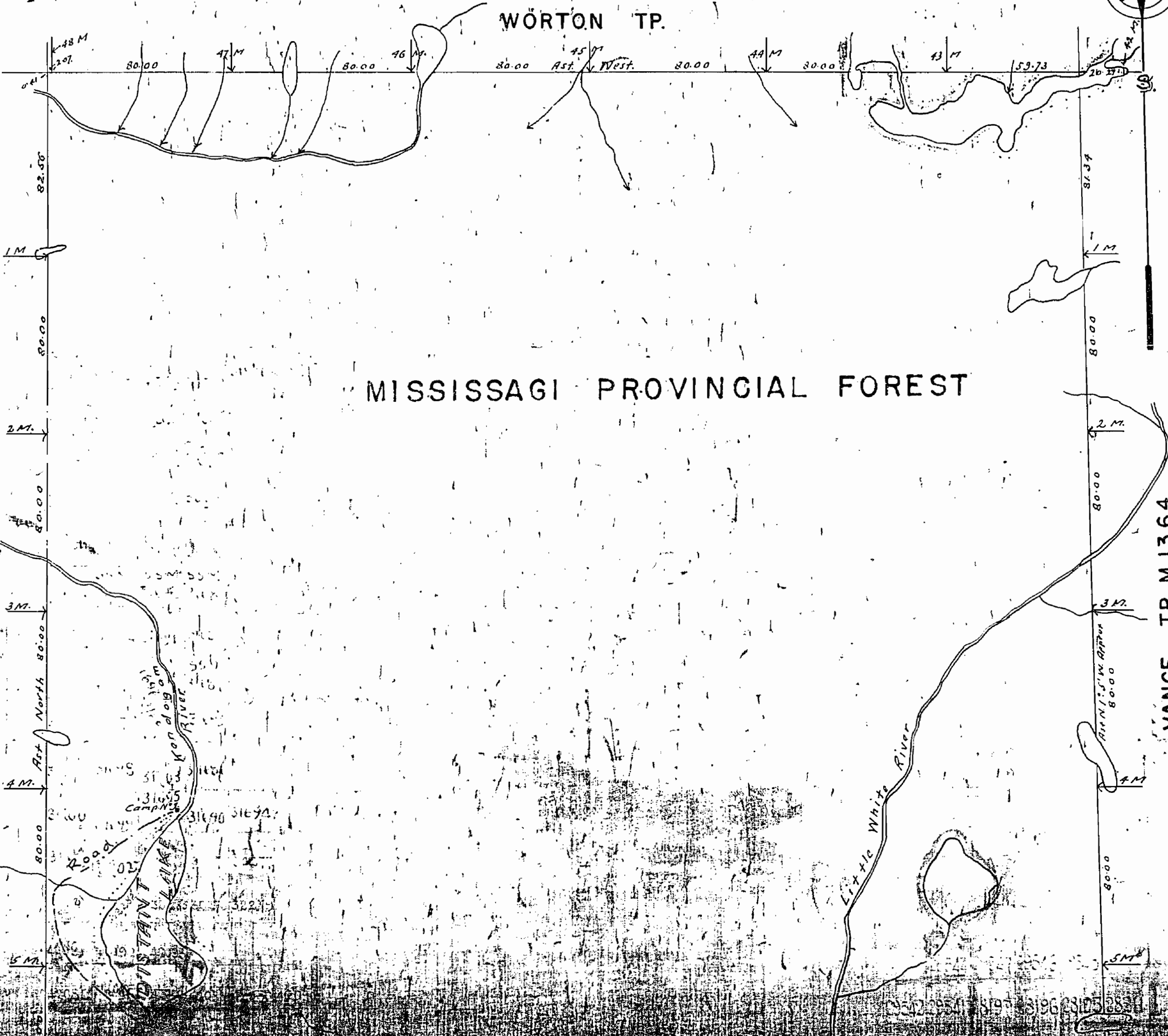


WORTON TP.

MISSISSAGI PROVINCIAL FOREST

THORP TP. M.1381

VANCE TP. M.1364

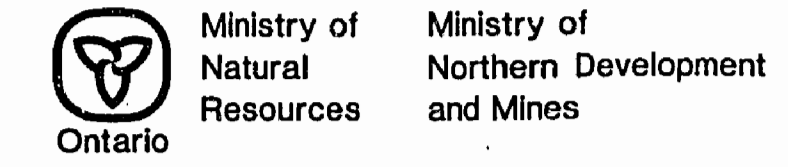
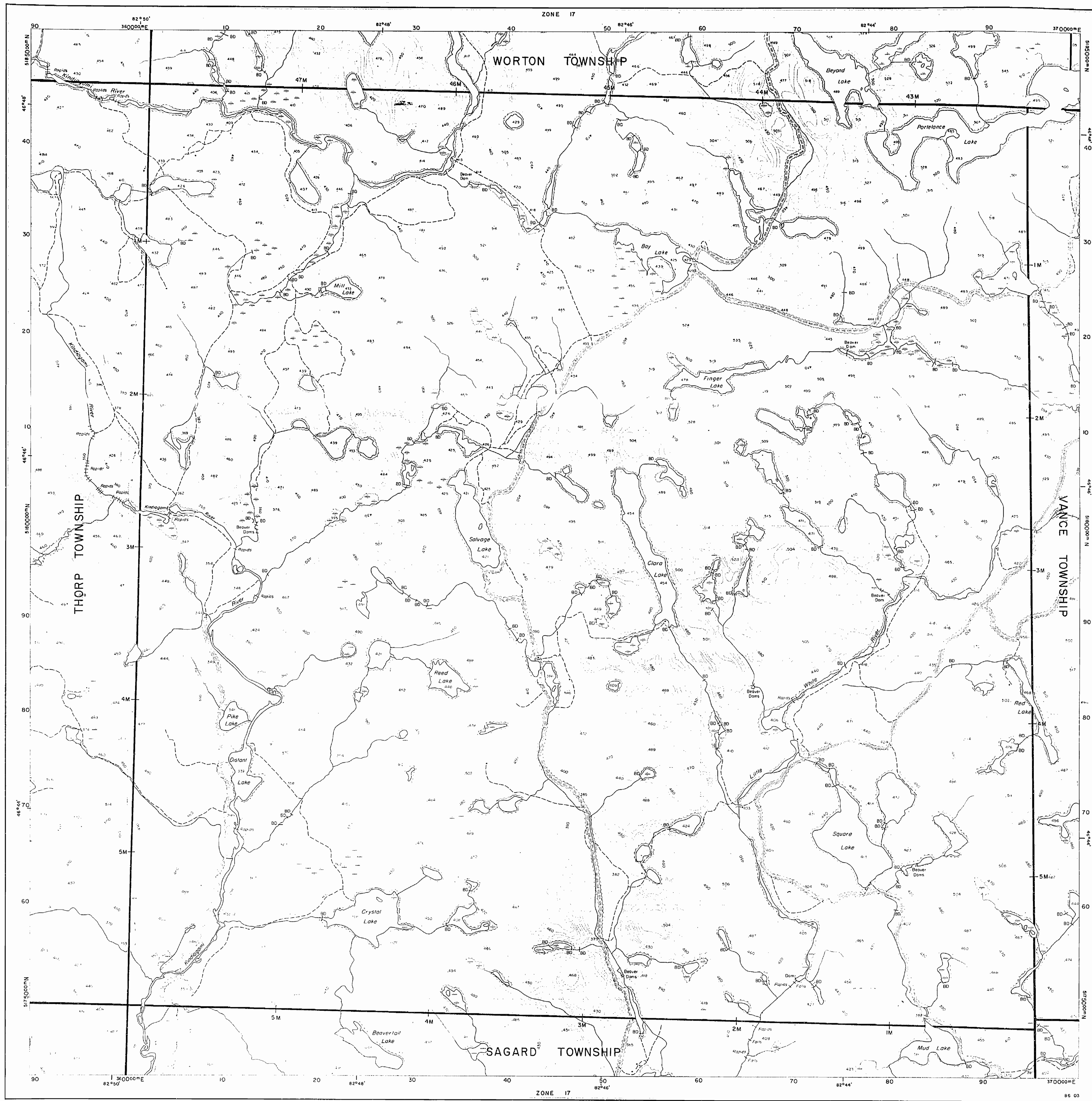


Refer to G.3337 for details

G-3331

TWEEDLE I.M.B.

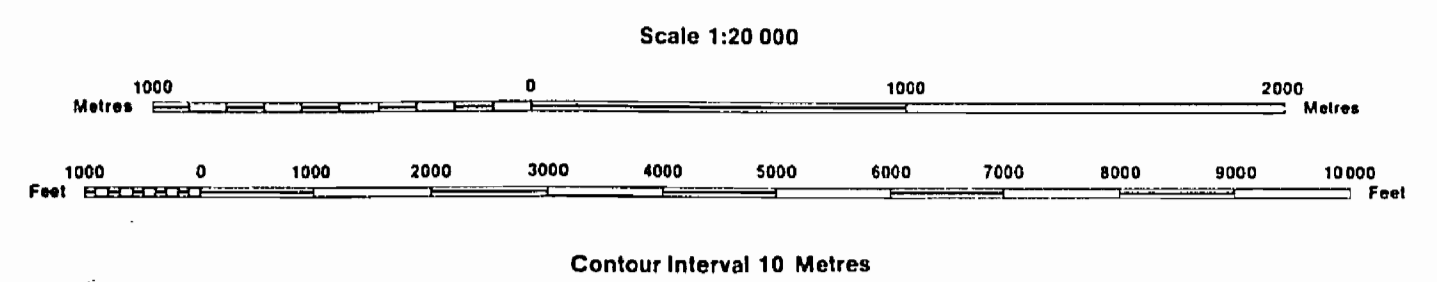
G-3331



INDEX TO LAND DISPOSITION

PLAN
G-3337
TOWNSHIP
TWEEDLE

M.N.R. ADMINISTRATIVE DISTRICT
BLIND RIVER
MINING DIVISION
SAULT STE. MARIE
LAND TITLES/REGISTRY DIVISION
ALGOMA



AREAS WITHDRAWN FROM DISPOSITION
MRO - Mining Rights Only
SRO - Surface Rights Only
M - S - Mining and Surface Rights

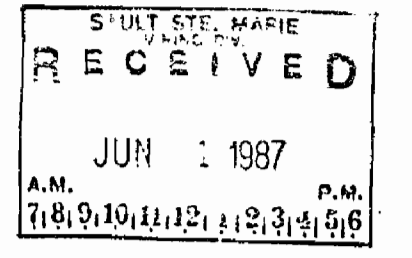
SYMBOLS

Description	Order No.	Date	Disposition	File
Boundary				
Township, Meridian, Baseline				
Road allowance; surveyed				
shoreline				
Lot/Concession; surveyed				
unsurveyed				
Parcel; surveyed				
unsurveyed				
Right-of-way; road				
railway				
utility				
Reservation				
Cliff, Pit, Pile				
Contour				
Interpolated				
Approximate				
Depression				
Control point (horizontal)				
Flooded land				
Mine head frame				
Pipeline (above ground)				
Railway; single track				
double track				
abandoned				
Road; highway, county, township				
access				
trail, bush				
Shoreline (original)				
Transmission line				
Wooded area				

DISPOSITION OF CROWN LANDS

Patent	
Surface & Mining Rights	●
Surface Rights Only	○
Mining Rights Only	○
Lease	
Surface & Mining Rights	■
Surface Rights Only	■
Mining Rights Only	■
Licence of Occupation	▼
Order-in-Council	OC
Cancelled	⊙
Reservation	⊙
Sand & Gravel	⊙

THE INFORMATION THAT APPEARS ON THIS MAP HAS BEEN COMPILED FROM VARIOUS SOURCES, AND ACCURACY IS NOT GUARANTEED. THOSE WISHING TO STAKE MINING CLAIMS SHOULD CONSULT WITH THE MINING RECORDER, MINISTRY OF NORTHERN DEVELOPMENT AND MINES, FOR ADDITIONAL INFORMATION ON THE STATUS OF THE LANDS SHOWN HEREON.



The 1980 Magnetic Bearing
Approx. 8.2W Annual Change
on crossing 3330W.

Replaced by new mylar on June 2nd/95 W.P.

G-3331

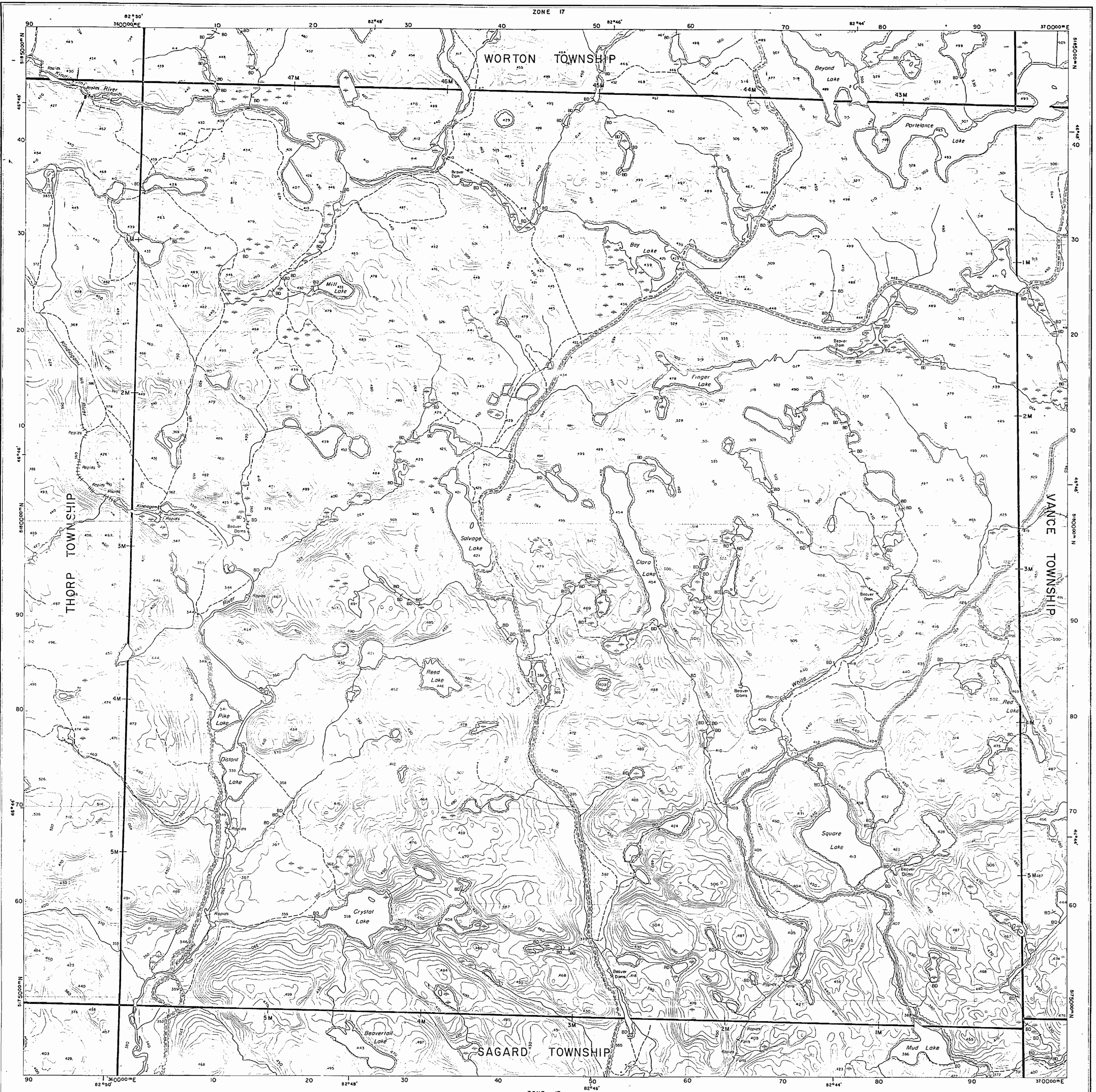
TWEEDLE I.M.B.

G-3331

G-3331

TWEEDLE TMB

G-3331

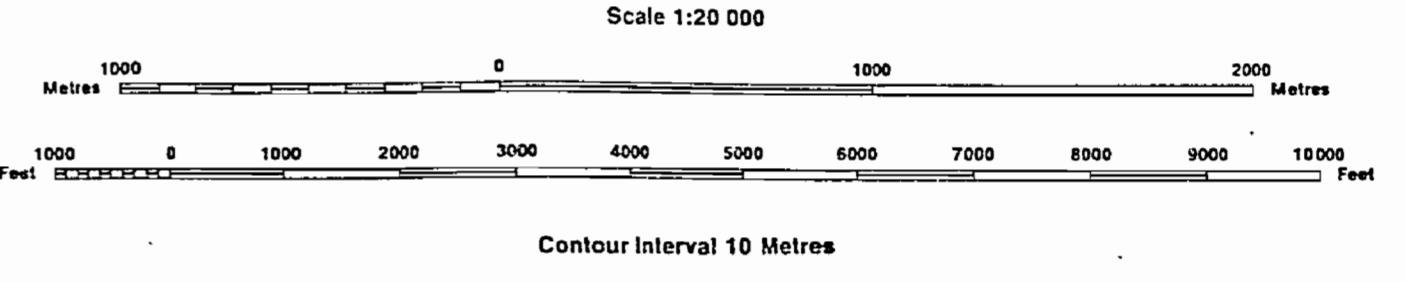


INDEX TO LAND DISPOSITION

PLAN
 G-3337
 TOWNSHIP

M.N.R. ADMINISTRATIVE DISTRICT
 BLIND RIVER
 MINING DIVISION
 SAULT STE. MARIE
 LAND TITLES/REGISTRY DIVISION
 ALGOMA

TWEEDLE



AREAS WITHDRAWN FROM DISPOSITION

MRO - Mining Rights Only
 SRO - Surface Rights Only
 M+S - Mining and Surface Rights

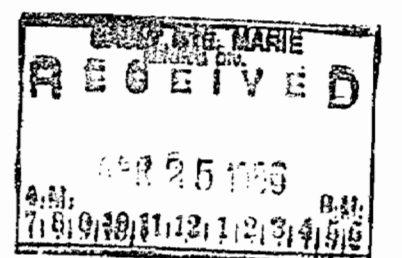
SYMBOLS

Description	Order No.	Date	Disposition	File
Boundary				
Township, Meridian, Baseline				
Road allowance; surveyed				
shoreline				
Lot/Concession; surveyed				
unsurveyed				
Parcel; surveyed				
unsurveyed				
Right-of-way; road				
railway				
utility				
Reservation				
Cliff, Pit, File				
Contour				
Interpolated				
Approximate				
Depression				
Control point (horizontal)				
Flooded land				
Mine head frame				
Pipeline (above ground)				
Railway; single track				
double track				
abandoned				
Road; highway, county, township				
access				
trail, bush				
Shoreline (original)				
Transmission line				
Wooded area				

DISPOSITION OF CROWN LANDS

Patent	
Surface & Mining Rights	○
Surface Rights Only	○
Mining Rights Only	○
Lease	
Surface & Mining Rights	■
Surface Rights Only	■
Mining Rights Only	■
Licence of Occupation	▽
Order-in-Council	OC
Cancelled	○
Reservation	○
Sand & Gravel	○

REPLACED BY G3337
 01/04/87 MVS



G-3331

TWEEDLE TMB

G-3331

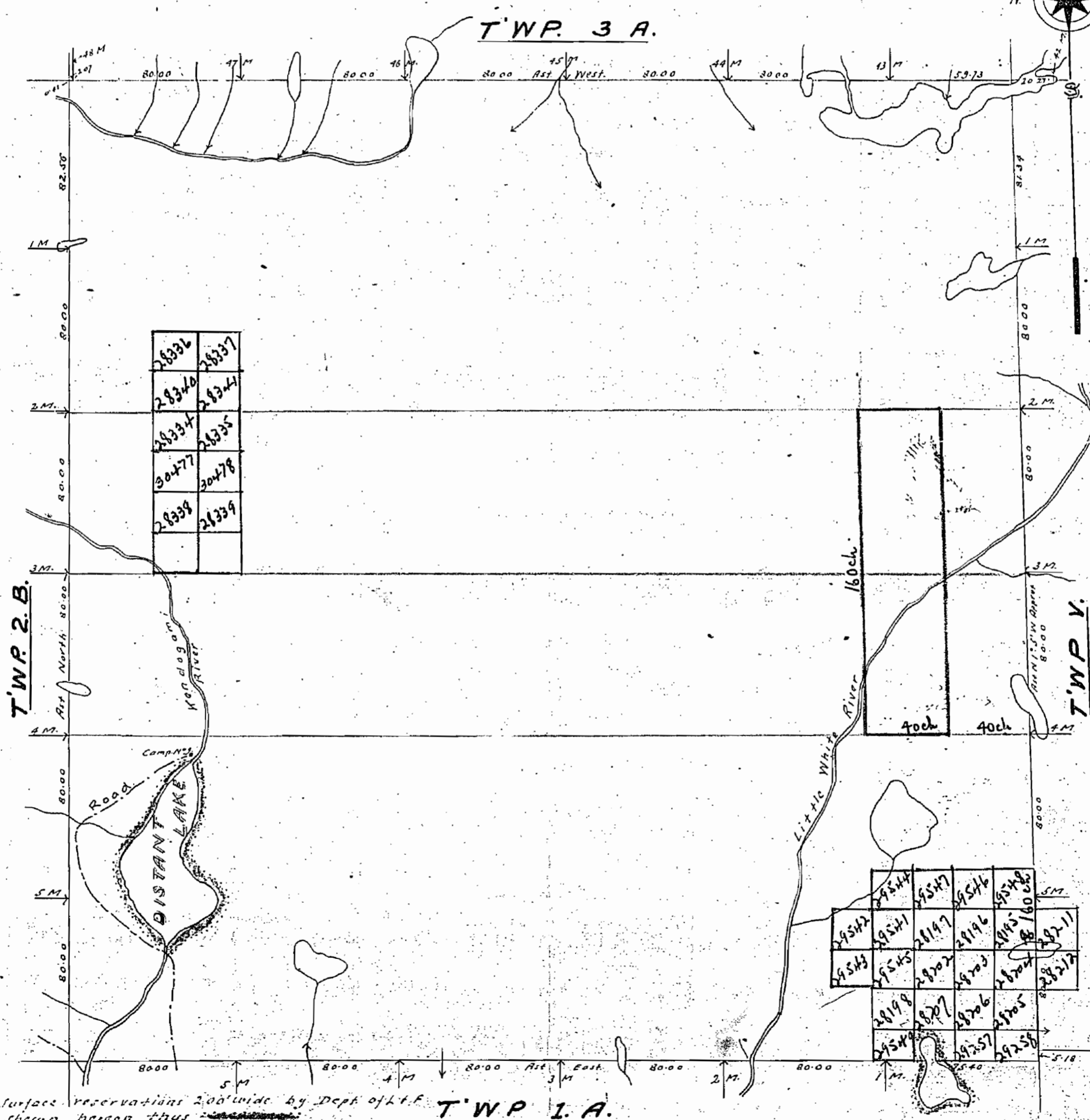
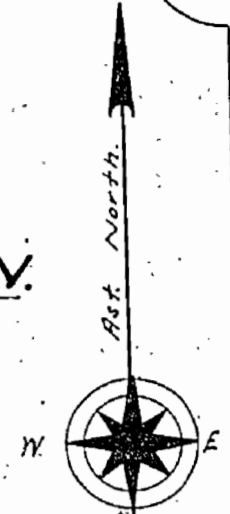
1380-

OFFICE MAP

PLAN OF (TWEEDLE) TWP 2 A. M. 1380

SAULT STE. MARIE MINING DIVISION. DISTRICT OF ALGOMA.

Scale 40 chains to an inch.



28336	28337
28340	28341
28334	28335
30477	30478
28338	28339

29542	29543	29544	29545	29546	29547	29548
29549	29550	29551	29552	29553	29554	29555
29556	29557	29558	29559	29560	29561	29562
29563	29564	29565	29566	29567	29568	29569
29570	29571	29572	29573	29574	29575	29576
29577	29578	29579	29580	29581	29582	29583
29584	29585	29586	29587	29588	29589	29590

Surface reservations 200' wide by Dept of L.F. shown hereon thus

TWP 2.A. S.A. 22M122

1380

OFFICE MAP

M.1380

PLAN OF

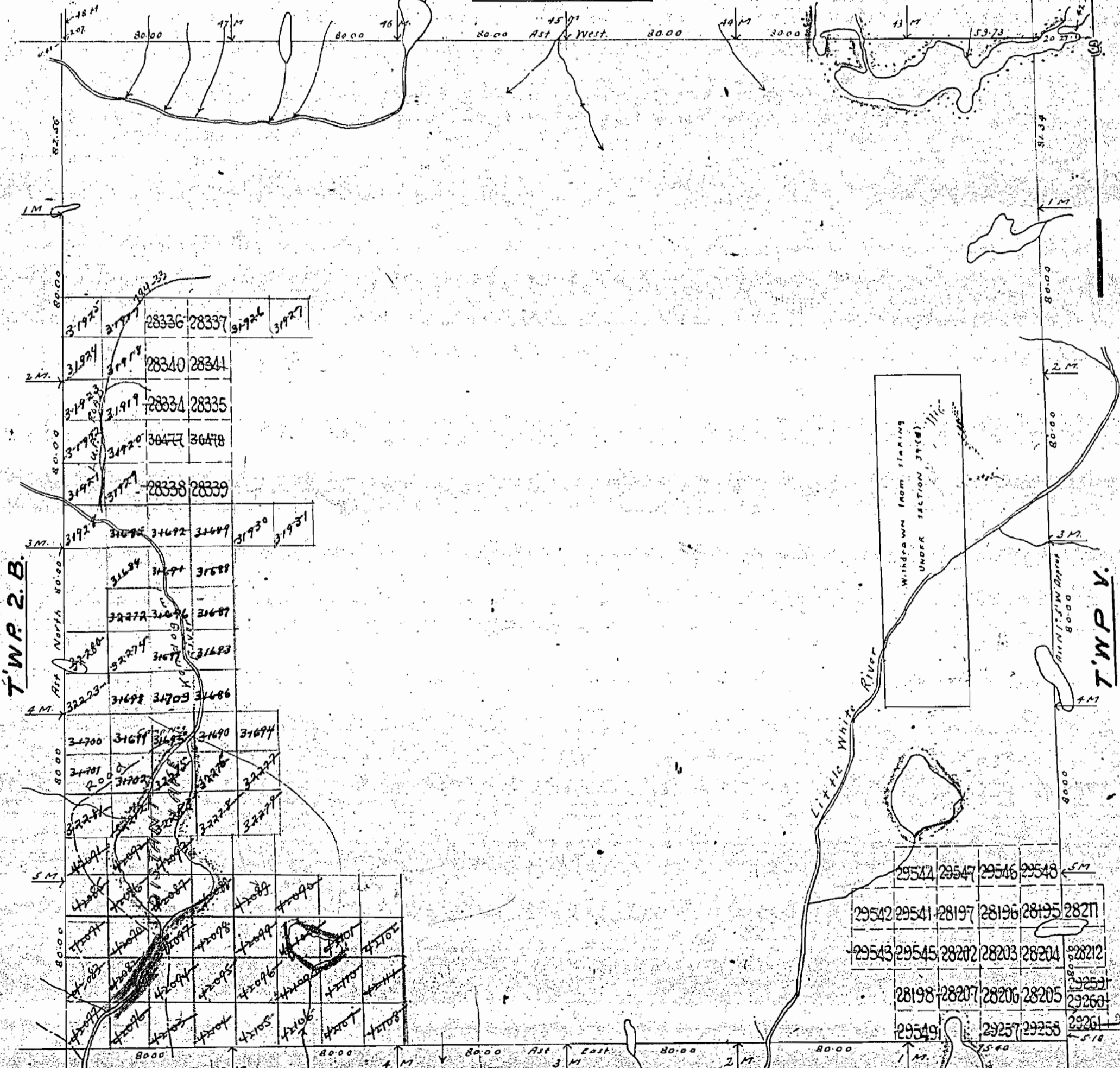
TWP. 2 A. (TWEEDLE)

SAULT STE. MARIE MINING DIVISION.
DISTRICT OF ALGOMA.

Scale, 40 chains to an inch.



TWP. 3 A.



TWP. 2 B.

TWP. 1 A.

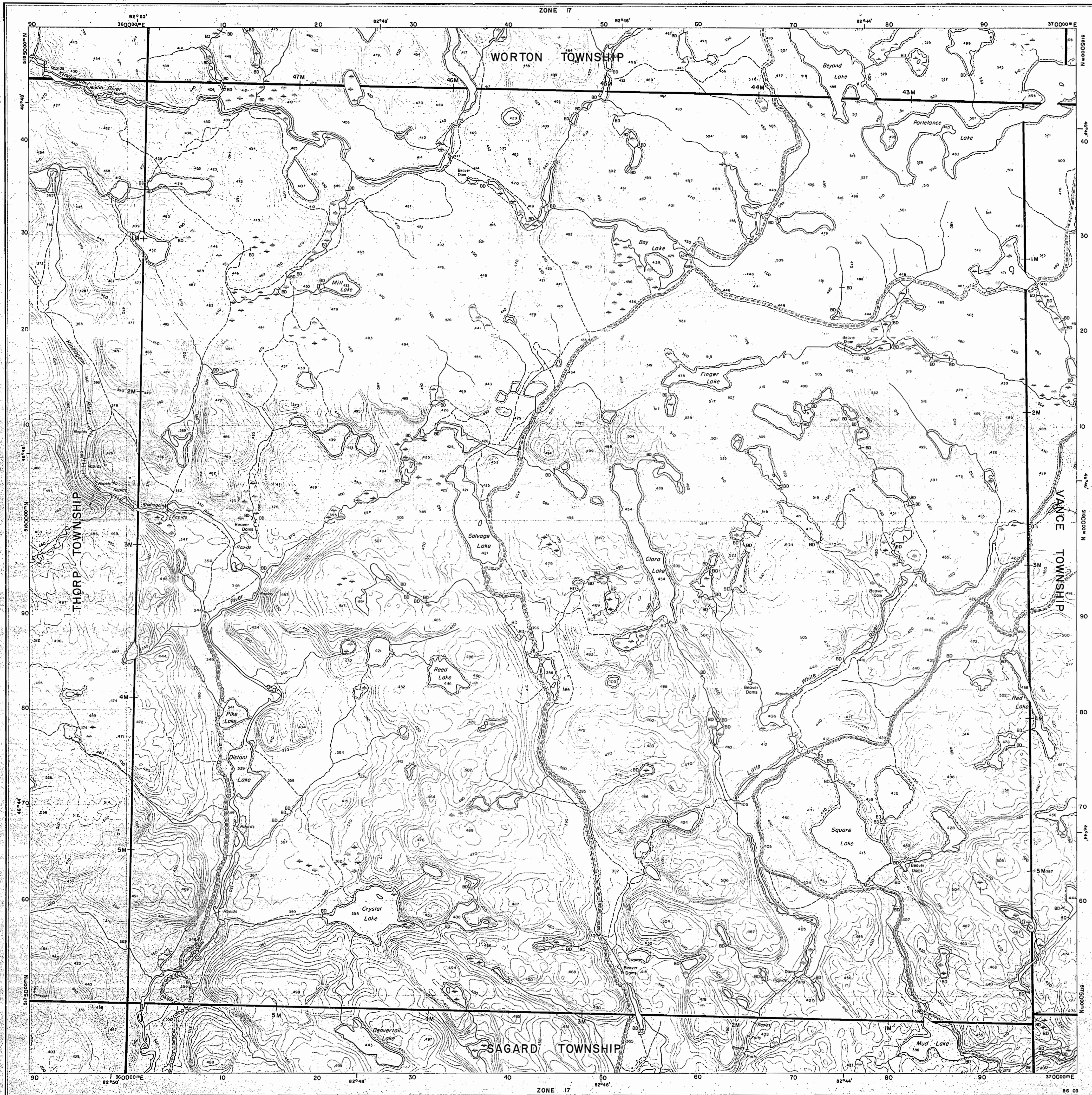
Surface Reservations 800' wide by Dept. of L.C. shown hereon thus

TWP. 1 A.

G-3337

TWEEDLE TWP

G-3337

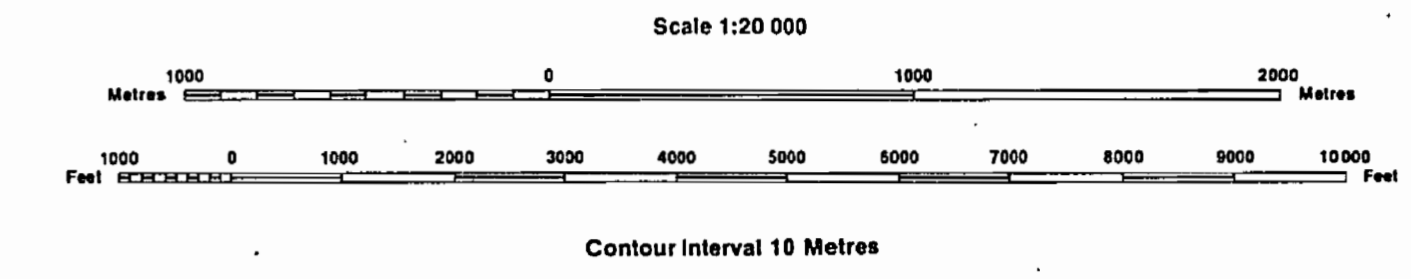


INDEX TO LAND DISPOSITION

PLAN
 G-3337
 TOWNSHIP

M.N.R. ADMINISTRATIVE DISTRICT
 BLIND RIVER
 MINING DIVISION
 SAULT STE. MARIE
 LAND TITLES/REGISTRY DIVISION
 ALGOMA

TWEEDLE



AREAS WITHDRAWN FROM DISPOSITION

MRO - Mining Rights Only
 SRO - Surface Rights Only
 M+S - Mining and Surface Rights

SYMBOLS

Description	Order No.	Date	Disposition	File
Boundary				
Township, Meridian, Baseline				
Road allowance; surveyed				
shoreline				
Lot/Concession; surveyed				
unsurveyed				
Parcel; surveyed				
unsurveyed				
Right-of-way; road				
railway				
utility				
Reservation				
Cliff, Pit, Pile				
Contour				
Interpolated				
Approximate				
Depression				
Control point (horizontal)				
Flooded land				
Mine head frame				
Pipeline (above ground)				
Railway; single track				
double track				
abandoned				
Road; highway, county, township				
access				
trail, bush				
Shoreline (original)				
Transmission line				
Wooded area				

DISPOSITION OF CROWN LANDS

Patent	
Surface & Mining Rights	●
Surface Rights Only	○
Mining Rights Only	◐
Lease	
Surface & Mining Rights	■
Surface Rights Only	□
Mining Rights Only	◻
Licence of Occupation	▼
Order-in-Council	OC
Cancelled	⊙
Reservation	⊖
Sand & Gravel	⊗

DATE OF ISSUE
 JUN 2 1995
 SAULT STE. MARIE
 MINING RECORDER'S OFFICE

THE 1920 MAGNETIC BEARING APPROX. 2° W
 ANNUAL CHANGE DECREASING 5" 30 W

THE INFORMATION THAT APPEARS ON THIS MAP HAS BEEN COMPILED FROM VARIOUS SOURCES, AND ACCURACY IS NOT GUARANTEED. THOSE WISHING TO STAKE MINING CLAIMS SHOULD CONSULT WITH THE MINING RECORDER, MINISTRY OF NORTHERN DEVELOPMENT AND MINES, FOR ADDITIONAL INFORMATION ON THE STATUS OF THE LANDS SHOWN HEREON.

G-3337

TWEEDLE TWP

G-3337

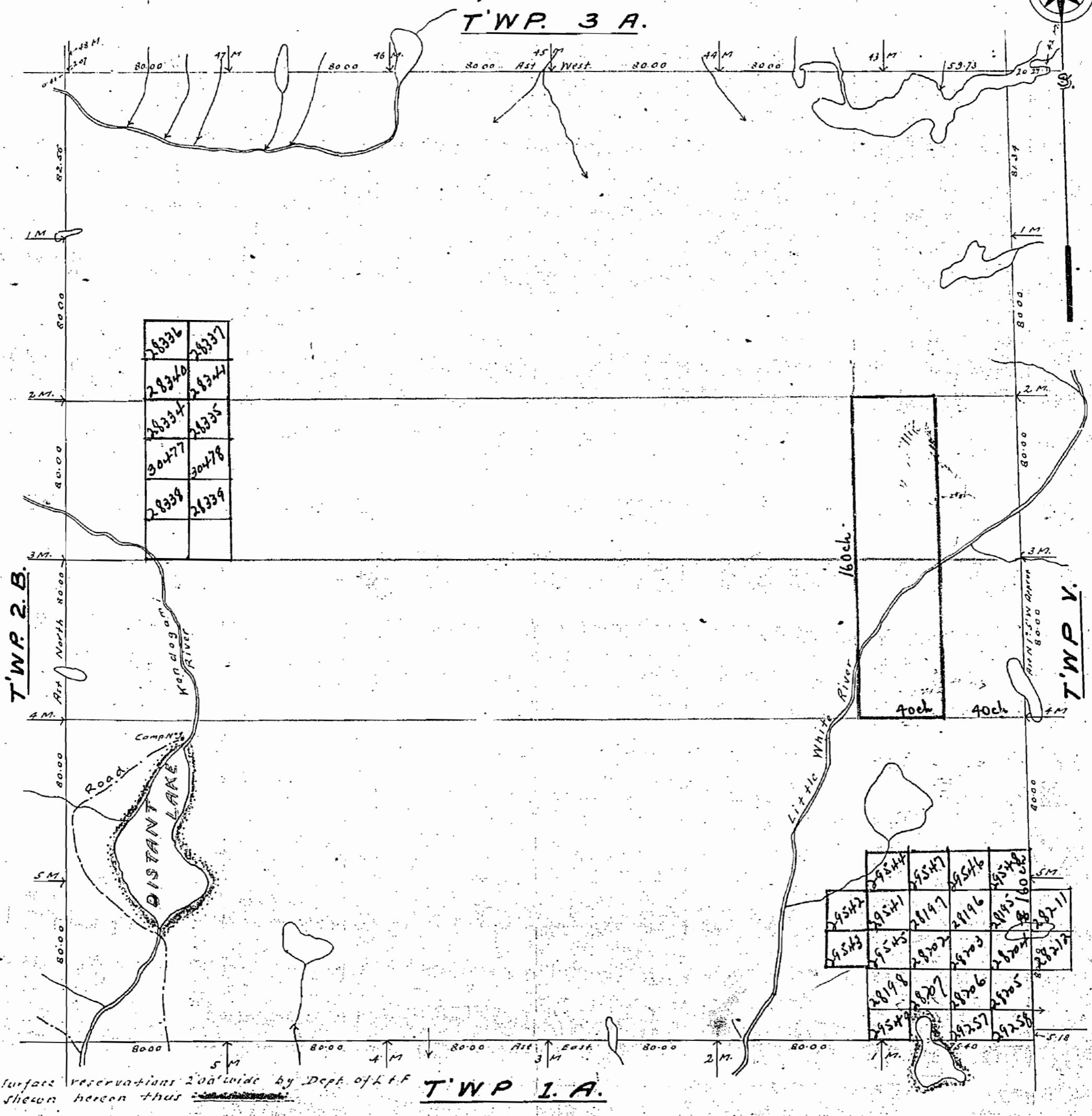
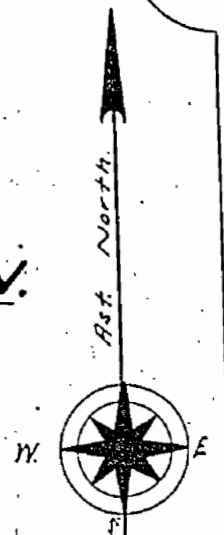
1380-

OFFICE MAP

PLAN OF (TWEEDLE)
TWP 2 A. M. 1380

SAULT STE. MARIE MINING DIVISION.
DISTRICT OF ALGOMA.

Scale 40 chains to an inch.



28336	28337
28340	28341
28354	28355
30477	30478
28338	28339

29542	29543	29544	29547	29546	29548
29545	29546	29547	29548	29549	29550
29551	29552	29553	29554	29555	29556
29557	29558	29559	29560	29561	29562
29563	29564	29565	29566	29567	29568
29569	29570	29571	29572	29573	29574

Surface reservations 200' wide by Dept. of L. & F. shown hereon thus ~~-----~~

TWP 1 A.

TWP 2 B.
TWP 3 A.
TWP V.

22M122

1380-

OFFICE MAP

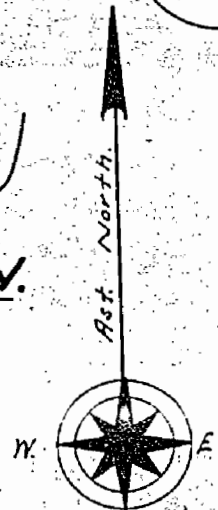
M.1386

PLAN OF

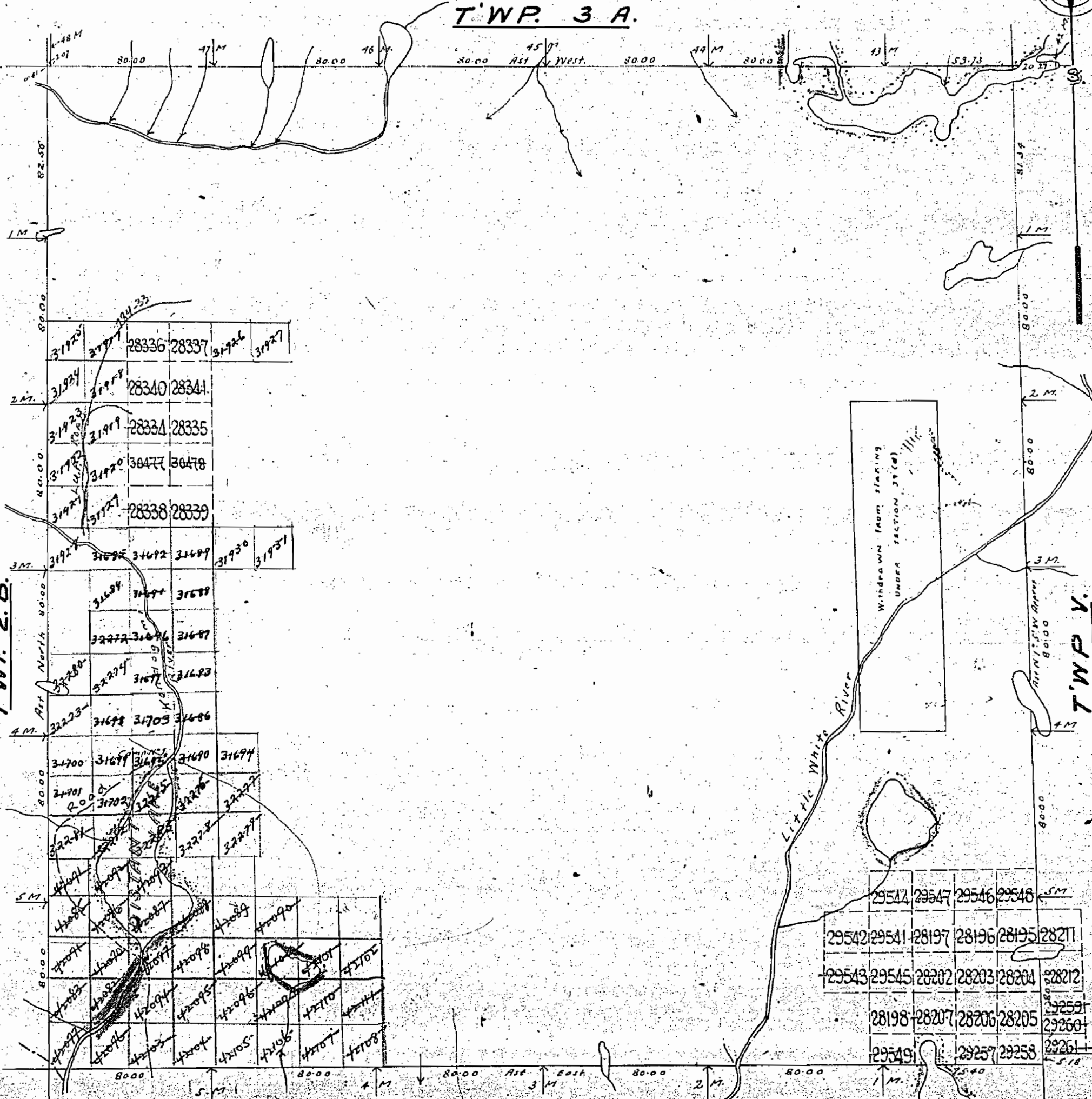
TWP. 2 A. (TWEEDLE)

SAULT STE. MARIE MINING DIVISION.
DISTRICT OF ALGOMA.

Scale, 40 chains to an inch.



TWP. 3 A.



TWP. 2 B.

TWP. 1 A.

Surface reservations 800' wide by Dept. of L.F. shown hereon thus

TWP. 1 A.

29547	29546	29548
29542	29541	28197
28196	28195	28211
29543	29545	28202
28203	28204	28212
28198	28207	28206
28205	29259	29260
29549	29257	29258
29261		

Windra wn. from staking UNDER SECTION 31 (a)

Little White River