

**ORDER**

**SECTION 35, THE MINING ACT, R.S.O. 1990**

**ORDER NO. O-K-114/24**

The SURFACE RIGHTS and MINING RIGHTS of the area outlined in red on the attached sketch, situated in the Boyer Lake Area, Kenora Mining Division, containing 21 hectares more or less, were withdrawn from prospecting, mining claim registration, sale and lease by Order W-K-36/20 while the Ministry determined the status of the lands.

Withdrawal Order W-K-36/20 is hereby revoked and the lands are REOPENED for prospecting, mining claim registration, sale and lease, unless the lands are otherwise not open for these activities under any other provision of the Mining Act.

This order comes into effect upon signing.

Date: September 5, 2024

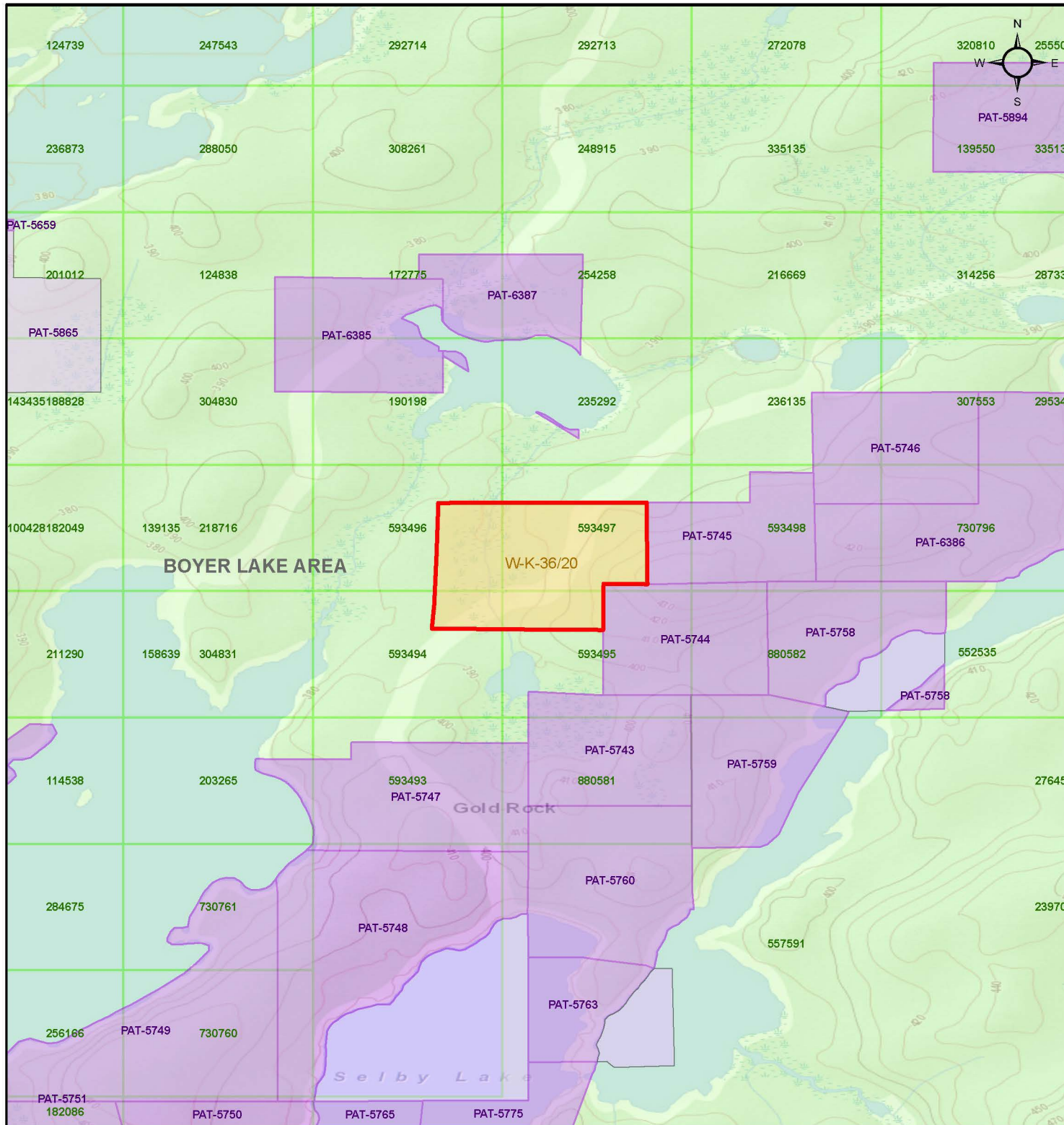
*James Schwyer*

James Schwyer, Provincial Mining Recorder  
Mining Lands Section  
Mines and Minerals Division

Time: 1:10pm

**Copies:**



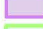
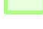
Senior Manager, Mining Lands Section, MINES, Sudbury  
Provincial Mining Recorder, MINES, Sudbury  
Provincial Lands Specialist – CLR






# O-K-114/24

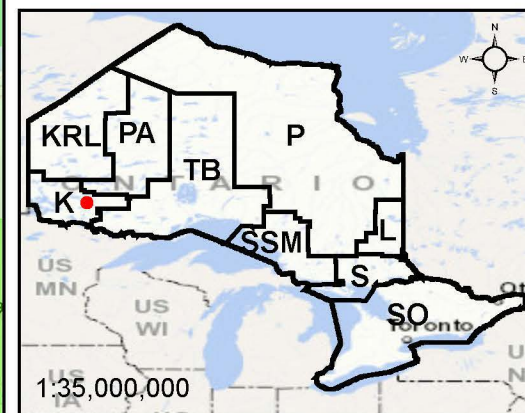
Boyer Lake Area  
Kenora Mining Division

 Re-Opening Area

-  Withdrawal
-  Notice
-  Order-in-Council
-  Cell Claims

## Land Tenure

-  Surface Rights
-  Mining Rights
-  Mining and Surface Rights



Scale: 1:20,000  
Projection: CGS NAD 1983 (CSRS)