

**ORDER**

**SECTION 35, THE MINING ACT, R.S.O. 1990**

**ORDER NO. O-KRL-29/17**

The SURFACE and MINING RIGHTS of the area outlined in red on the attached sketch, in the Gerry Lake Area (G-1782) , Red Lake Mining Division, containing 224 hectares, more or less, are hereby REOPENED to prospecting, staking out, sale or lease.

This area was originally withdrawn by Order W-KRL-24/17, while the Ministry determined the status of the land.

This order comes into effect upon signing.

Date: May 30, 2017

Time: 2:21 pm E.S.T.

ORIGINAL SIGNED BY SCOTT COUSINEAU

Scott Cousineau, Mining Recorder

Mining Lands Section

Mines and Minerals Division

Copies:

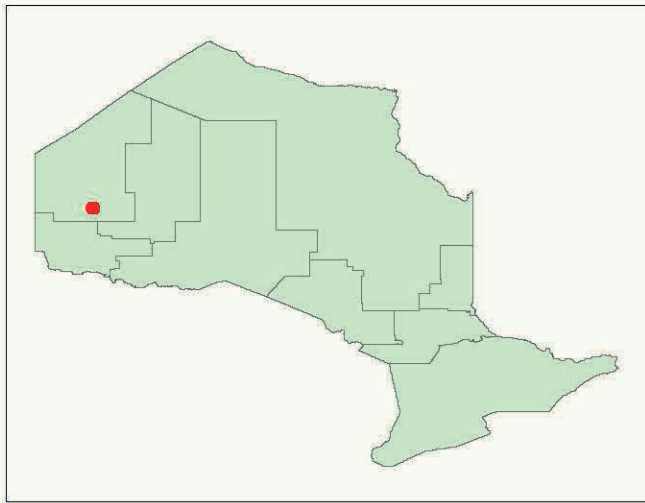
Senior Manager, Mining Lands Section, MNDM, Sudbury

Provincial Mining Recorder, MNDM, Sudbury

Provincial Lands Specialist - CLR



O-KRL-29/17  
Gerry Lake Area (G-1782)  
Red Lake Mining Division

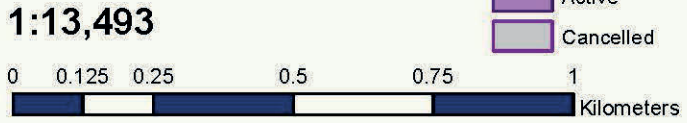
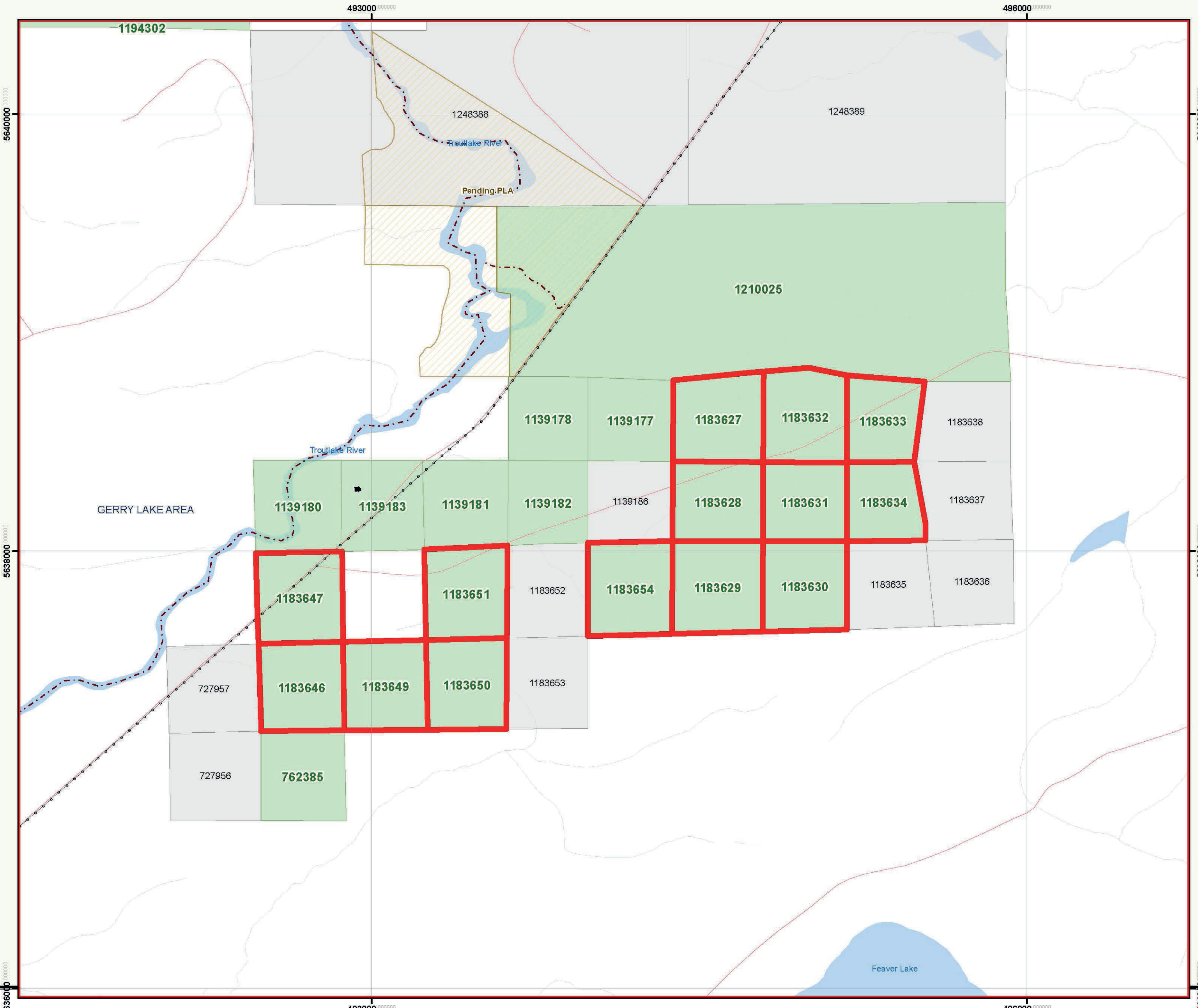


**Base Features**

- Tower
- Work Camp
- Utility Site
- MNDM Administrative Boundaries
- Lot Fabric Improved
- Utility Line - Hydro Line**
  - Transmission Line  
Ligne de transmission
  - Pipeline  
Pipeline
- Road Segment**
  - Other Existing Roads  
Autres routes actuelles
  - Primary Route principale
  - Highway Autoroute
  - Trail Segment
  - Railway Segment
- Airports**
  - Airports
  - Airport Airstrip
  - Airport Official
- Federal Protected Area**
  - Federal Protected Area
  - Federal Land Other
  - Indian Reserve
- Waterbodies**
  - River / Stream
  - Waterbody
- Provincial Park Regulated**
  - Provincial Park Regulated
  - Conservation Reserve Regulated

**Mining Lands Features**

- Withdrawal Area
- Dispositions Symbols**
  - Freehold Patent, S+M
  - Freehold Patent, SRO
  - Freehold Patent, MRO
  - Leasehold Patent, S+M
  - Leasehold Patent, SRO
  - Leasehold Patent, MRO
  - Licence of Occupation, S+M
  - Licence of Occupation, SRO
  - Licence of Occupation, MRO
  - Licence of Occupation, not specified
  - Tower
  - Camp
  - Unknown
  - Order in Council
  - Land Use Permit
  - WPLA
- MNDM Alienations**
  - Active, Withdrawal
  - Active, Notice
  - Cancelled, Withdrawal
  - Cancelled, Notice
- MNDM Mining Claims**
  - Active
  - Cancelled
  - Pending
- MNDM Dispositions**
  - Active
  - Cancelled



This map should not be relied on as a precise indicator of routes or locations, nor as a guide to navigation. The Ontario Ministry of Natural Resources (OMNR) shall not be liable in any way for the use of, or reliance upon, this map or any information on this map.

Il ne faut pas présumer que cette carte indique précisément les voies et les lieux, ni s'en servir comme guide à la navigation. Le ministère des Richesses naturelles de l'Ontario (MRN) n'assume aucune responsabilité quelle qu'elle soit relativement à l'utilisation de cette carte ou de la confiance qui serait mise en celle-ci.