

ORDER**SECTION 35, THE MINING ACT, R.S.O. 1990****ORDER NO. O-L-27/16**

The SURFACE and MINING RIGHTS of the area outlined in red on the attached sketch, in Flavelle Township (M-0220), Larder Lake Mining Division, containing 32 hectares, more or less, are hereby REOPENED to prospecting, staking out, sale or lease.

This area was originally withdrawn by Order W-L-19/16, while the Ministry determined the status of the land.

This order comes into effect upon signing.

Date: May 24, 2016

Time: 1:35pm

C. D. Stephenson

Clive Stephenson, A/ Senior Manager

Mining Lands Section

Mines and Minerals Division

Copies:

Senior Manager, Mining Lands Section, MNDM, Sudbury

Provincial Mining Recorder, MNDM, Sudbury

Provincial Lands Specialist - CLR



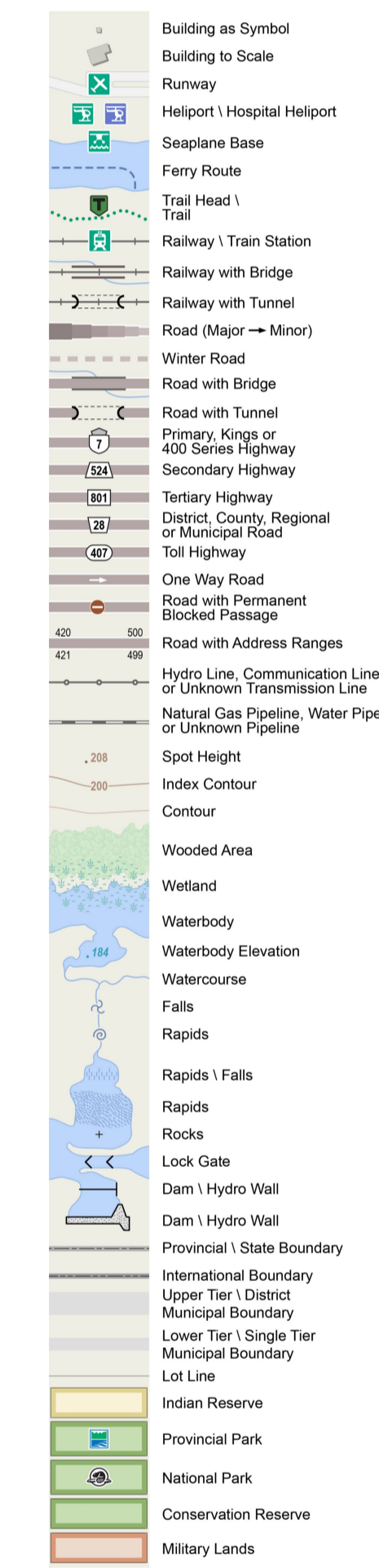
Map Notes:

O-L-27/16
Flavelle Township (M-0220)
Larder Lake Mining Division

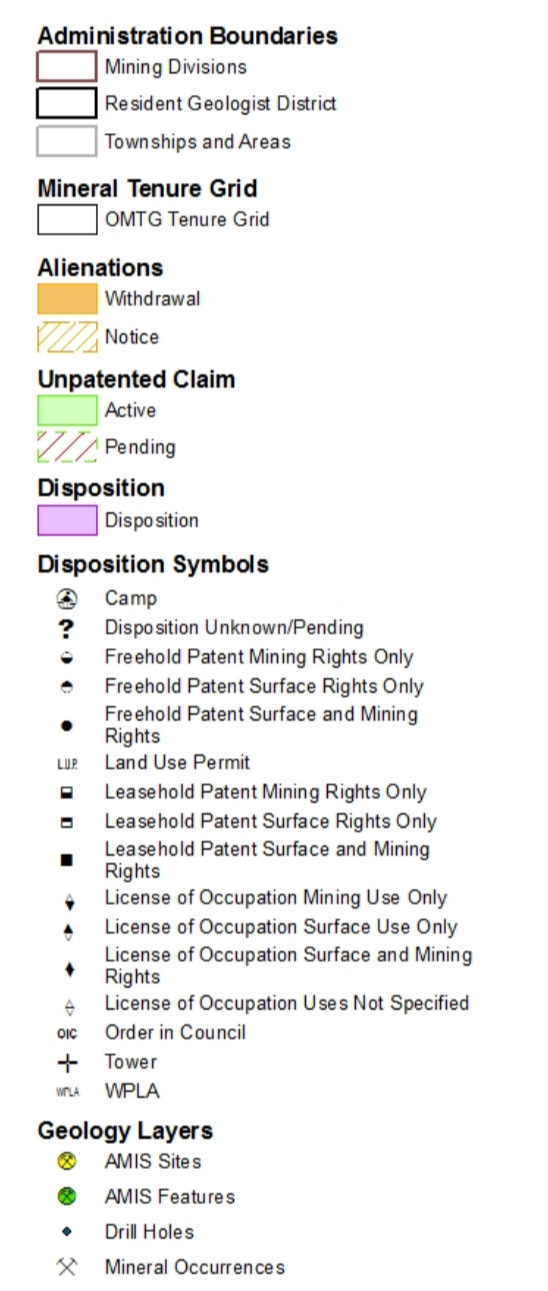
Administrative Districts

Township
FLAVELLE
Mining Division
Larder Lake
Land Registry
TIMISKAMING
MNRF District Office
KIRKLAND LAKE

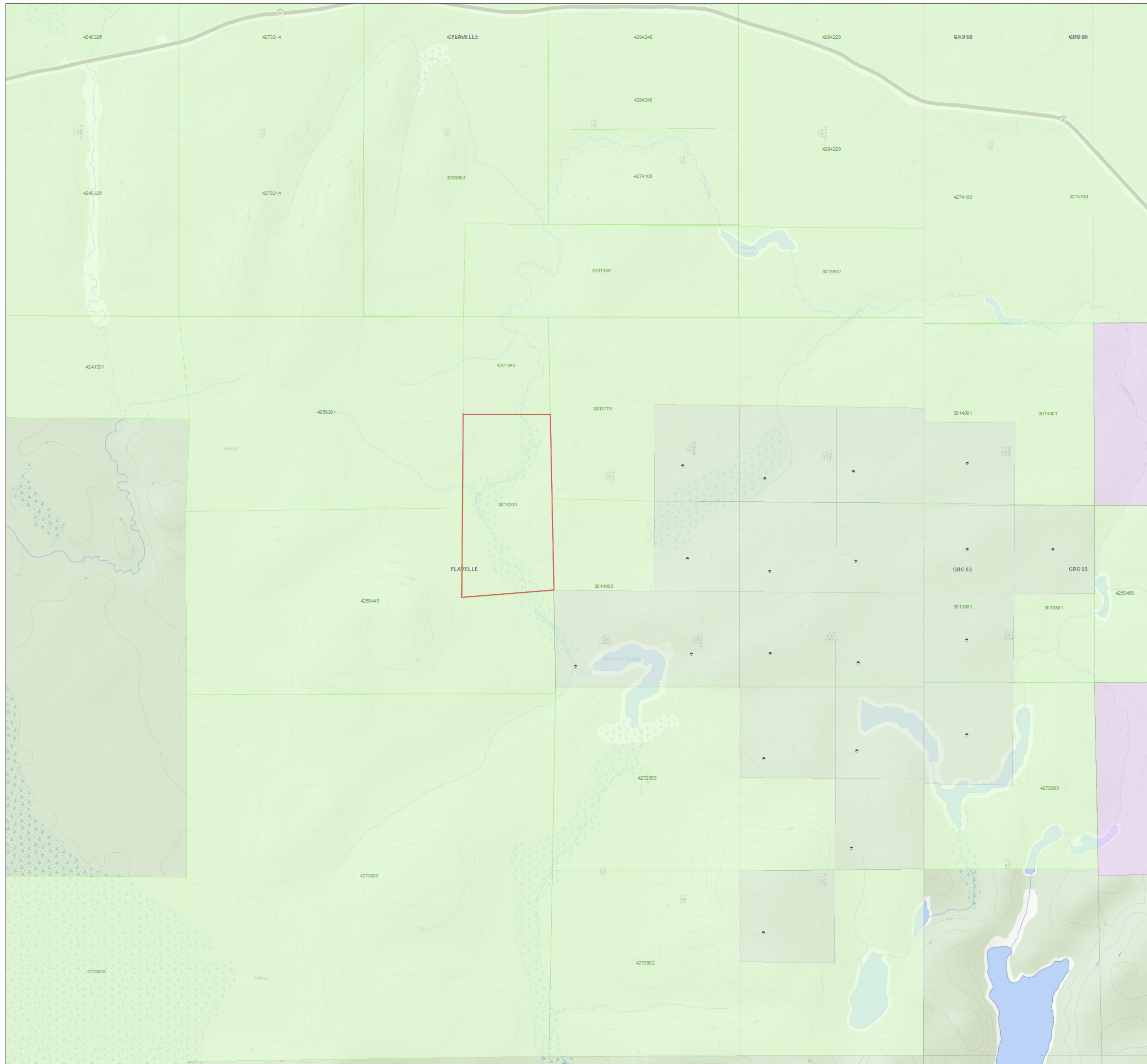
Topographic



Mining Lands



Map Datum: NAD 83
Projection: Web Mercator



Those wishing to stake mining claims should consult with the Provincial Mining Recorders' Office of the Ministry of Northern Development and Mines for additional information on the status of the lands shown hereon. This map is not intended for navigational, survey, or land title determination purposes as the information shown on this map is compiled from various sources.

Completeness and accuracy are not guaranteed.

Additional information may also be obtained through the local Land Titles or Registry Office, or the Ministry of Natural Resources and Forestry.

The information shown is derived from digital data available in the Provincial Mining Recorders' Office at the time of downloading from the Ministry of Northern Development and Mines web site.

© Queen's Printer for Ontario, 2016